



# RESTAURANT EQUIPMENT HAWAII



## CABINET CONSTRUCTION

HEAVY-DUTY BLACK COATED STEEL EXTERIOR WITH A 304 TYPE STAINLESS STEEL INTERIOR FEATURES COVED CORNERS FOR EASY CLEAN-UP. SELF-CLOSING, GLASS DOORS COME STANDARD WITH LOCKS TO PROTECT CONTENTS INSIDE. DURABLE, 11/2" THICK STAINLESS STEEL TOP FOR PREP AND DRINK SERVICE.

FOAMED-IN-PLACE CFC- AND HCFC-FREE POLYURETHANE INSULATION ENHANCES THE STRUCTURAL STRENGTH OF THE CABINET AND HELPS INCREASE ENERGY EFFICIENCY.

## REFRIGERATION SYSTEM

ENVIRONMENTALLY SAFE R290 REFRIGERANT. SIDE-MOUNTED CONDENSING UNIT POSITIONED FOR EASY MAINTENANCE.

## SHELVING

4 EPOXY-COATED STEEL SHELVES INCLUDED. EACH ACCOMMODATES UP TO 90 LB.

## MODEL FEATURES

PREPROGRAMMED DIGITAL CONTROLLER FEATURES AUTO-DEFROST FUNCTION. LED LIGHTING ENSURES OPTIMAL PRODUCT VISIBILITY. ACCOMMODATES TWO 1/2 SIZE KEGS. NARROW DEPTH DESIGN MAKES THIS UNIT IDEAL FOR TIGHT BAR SPACES.

## SPECIAL FEATURES

- ECO-FRIENDLY R290 HYDROCARBON REFRIGERANT
- SLEEK, BLACK COATED STEEL EXTERIOR WITH GLASS DOORS
- 304 TYPE STAINLESS STEEL INTERIOR WITH COVED CORNERS
- MAINTAINS TEMPERATURES FROM 33-40 F
- FOUR EPOXY-COATED STEEL SHELVES ACCOMMODATE UP TO 90 LB. EACH
- ACCOMMODATES UP TO (2) 1/2 KEGS
- FOAMED-IN-PLACE POLYURETHANE INSULATION
- BUILT-IN 11/2" STAINLESS STEEL TOP
- 115V; 1/5 HP
- STAINLESS STEEL INTERIOR IS FOOD RATED AND MARKED WITH THE ETL SANITATION MARK



PARTS & LABOR



COMPRESSOR

WARRANTY  
RESIDENTIAL: REH ASSUMES NO LIABILITY FOR PARTS OR LABOR COVERAGE FOR COMPONENT FAILURE, FACTORY DEFECT OR ANY OTHER DAMAGES FOR UNITS INSTALLED IN NON-COMMERCIAL FOODSERVICE OR RESIDENTIAL APPLICATIONS.



# RESTAURANT EQUIPMENT HAWAII

QUALITY COMMERCIAL EQUIPMENT FOR  
RESTAURANTS & BARS

VISIT OUR ONLINE STORE FOR PRICING & INFORMATION ON  
EQUIPMENT, FOOD TRUCKS & OUR COMMISARY KITCHEN

808-845-5052

## TECHNICAL DATA

### DIMENSIONS

EXTERIOR DIMENSIONS	48 <sup>3</sup> / <sub>4</sub> "W x 25 <sup>3</sup> / <sub>4</sub> "D x 35 <sup>5</sup> / <sub>8</sub> "H
INTERIOR DIMENSIONS	36 <sup>1</sup> / <sub>4</sub> "W x 18 <sup>1</sup> / <sub>2</sub> "D x 28 <sup>7</sup> / <sub>8</sub> "H
NET VOLUME	13 CU. FT.
PRODUCT CAPACITY	(2) 1/2 KEGS
NET WEIGHT	231 LB.
GROSS WEIGHT	282 LB.

### COOLING

TEMPERATURE RANGE	33°F-40°F
REFRIGERANT	R290
MAX. AMBIENT TEMPERATURE	90°F
DEFROSTING	AUTOMATIC
TEMPERATURE CONTROLLER	DIGITAL
HORSEPOWER	1/5

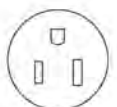
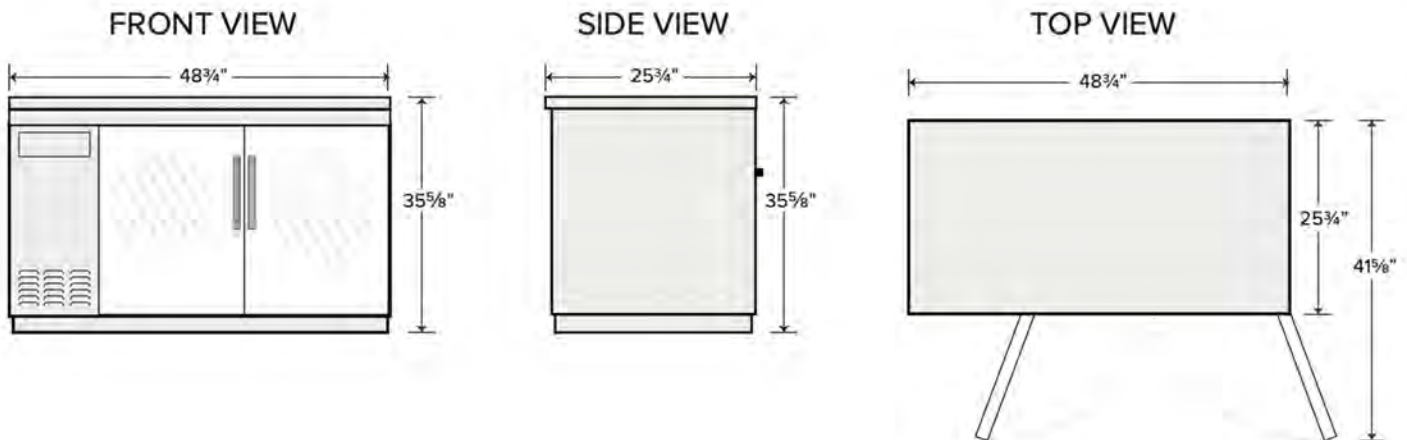
### CONSTRUCTION

EXTERIOR MATERIAL	BLACK COATED STEEL
INTERIOR MATERIAL	TYPE 304 STAINLESS STEEL
COUNTERTOP TYPE	TYPE 304 STAINLESS STEEL
DOOR TYPE	GLASS
SHELF SIZE	(4) 17 <sup>5</sup> / <sub>8</sub> " x 18 <sup>1</sup> / <sub>8</sub> "
SHELF LOAD CAPACITY	90 LB.

### ELECTRICAL

VOLTAGE	115
AMPS	2.88
HZ	60
PHASE	1
PLUG TYPE	NEMA 5-15P
ELECTRICAL CORD LENGTH	106"

## PLAN VIEW



NEMA 5-15P