

3D BRACING

The Gensingen Brace is a 3D Chêneau-style TLSO from Germany. This innovative brace aims for curve overcorrection, when possible, with the goal of curve reduction at the conclusion of treatment. CAD/CAM is used for the creation of each curve-pattern specific brace.

KEY FEATURES

- Asymmetric
- Fast-turnaround
- 3D - addressing all 3 planes of scoliosis
- Front-closing design
- Curve-pattern specific
- Voids make it Schroth method compatible
- Less material, especially at hip and chest
- Effective in improving postural appearance
- A viable option for 40°+ curves (not always considered for bracing)
- Patients report easier wear than other braces.

EXAMPLE

9-year-old female (premenarcheal) with severe scoliosis fit with the Gensingen brace.



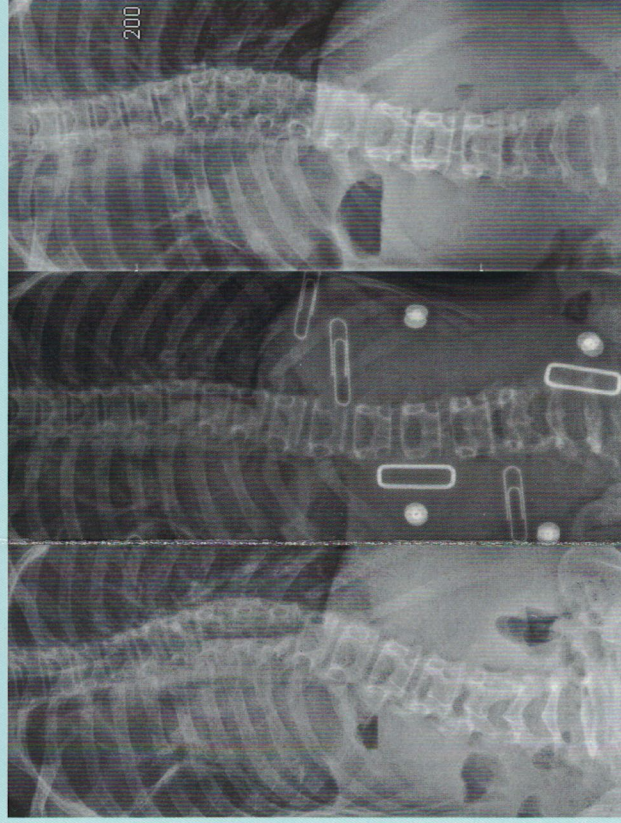
COBB ANGLES

Left (Before)
46°/28°

Center (In-brace)
14°/23°

Right (Current*)
30°/20°

* Still under treatment



RESOURCES

Weiss HR, Tournavitis N, Seibel S, Kleban A. A Prospective Cohort Study of AIS Patients with 40° and More Treated with a Gensingen Brace (GBW): Preliminary Results. *The Open Orthopaedics Journal*. 2017;11:1558-1567.

Weiss HR, Seibel S, Moramarco M, Kleban A. Bracing Scoliosis—the Evolution to CAD/CAM. *Hard Tissue*. 2013;2(5):43.

Weiss HR, Moramarco M. Remodelling of trunk and backshape deformities in patients with scoliosis using standardized asymmetric CAD / CAM braces. *Hard Tissue*. 2013;2(2):14.

Weiss HR. "Brace technology" thematic series – the Gensingen brace™ in the treatment of scoliosis. *Scoliosis*. 2010;5:22.

OVERCORRECTION

An underlying principle of the Chêneau-Gensingen® brace is to attempt overcorrection, whenever possible. Overcorrection brings the scoliosis curve past the midline of the back into the opposite direction.

The goal is to halt progression and increase the likelihood of curve reduction. Results vary, but generally, this is most easily achieved with immature, flexible spines. That's why bracing earlier, rather than later, is recommended.

The Gensingen brace is fully compatible with Schroth exercise protocols and may be used alone or in conjunction with Schroth therapy. Effective 3D bracing requires room for corrective movement. To achieve this, each brace is designed with strategically placed voids and pressure zones in accordance with Augmented-Lehnert-Schroth Classifications.

TESTIMONIALS

"So HAPPY & relieved with the result. [My daughter] is out of the woods, no surgery needed!"

"We just went for an out-of-brace x-ray and the curve is now 13°!!"

"She is tolerating the Gensingen brace much better than she ever tolerated the Boston brace."

"Needless to say, [the surgeon] was very pleasantly surprised to see a true reduction in her curves. He said, 'You can't argue with those results.'"

"The brace helps tremendously for support and makes me more comfortable when I am tired."
- Adult Patient

GENSINGEN BRACE®



*The gold standard in
Chêneau scoliosis bracing!*

scoliosisbracinginnovations.com