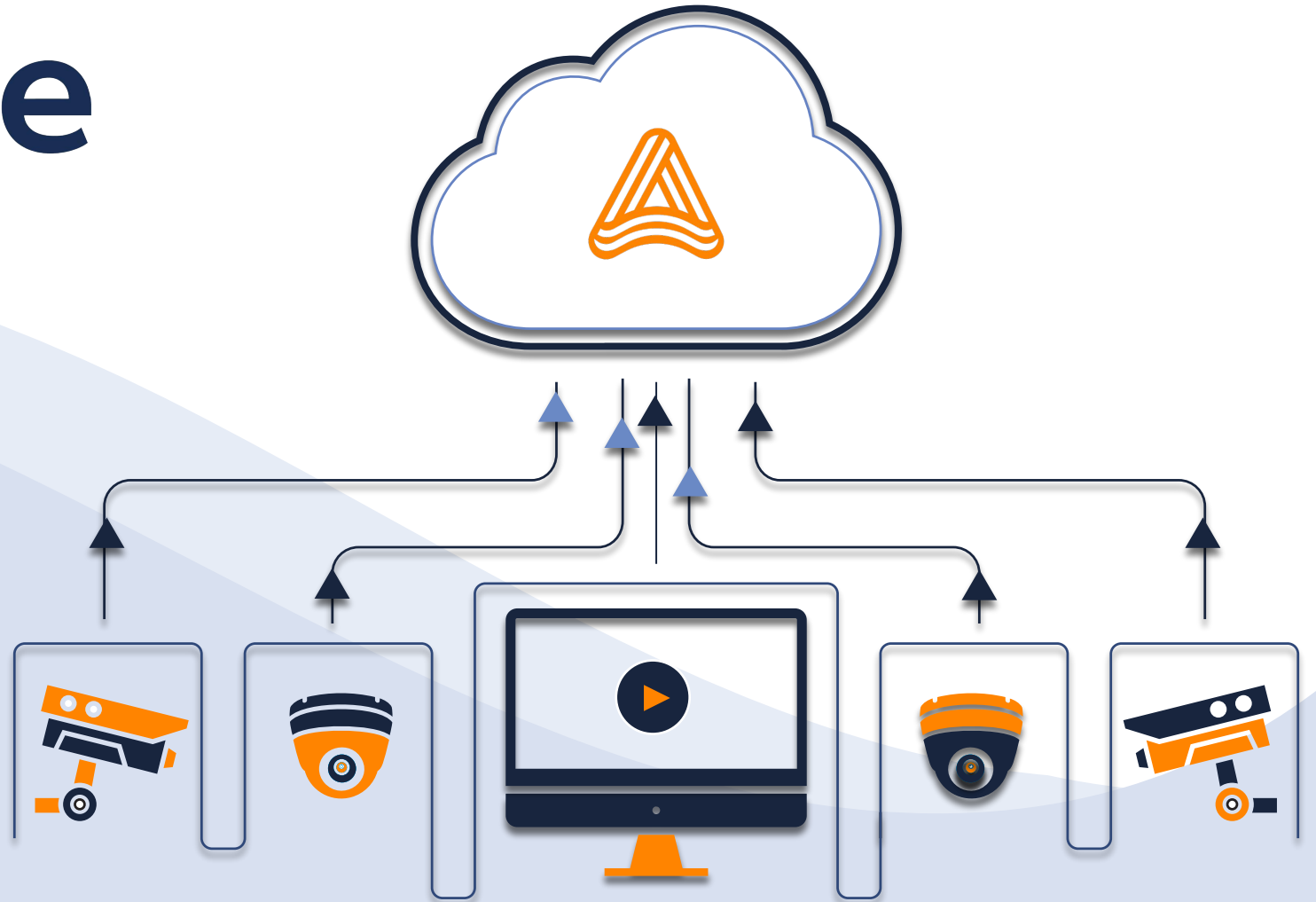




Keeping Communities Safe with AI

OVERVIEW

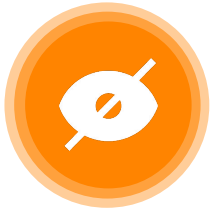


Current Situation

Video data is unused, hindering effective building management



90%+ of Organizations Have Cameras¹



Most Cameras are **Unmonitored**



Slow and Difficult to Retrieve Information

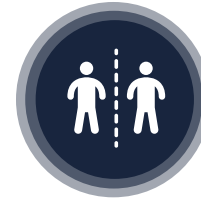
UN
US
ED
DA
TA



Slow Response to Gun Threats



Intruders and Loiterers,



Crowd and People Counting



Inefficient Building Management

How does Actuate work?

01

Existing Surveillance Infrastructure

Motion / Event detected on video

Improve Model

04

Notify Police & Building Occupants

Real-time intelligence enables faster and more precise response



02

Computer Vision Model Detection

Threats identified, tracked, and tagged in real-time

<0.5 secs to Mobile Alert

03

Alert Building Security or Operation Center

Threats identified, tracked, and tagged in real-time

Actuate's AI Identifies Key Events in Real-Time



THREAT DETECTION



Gun Detection

Identifies brandished or held firearms



Intruder Detection

Identifies a person or vehicle where/when they are not permitted



Loitering Detection

Identifies when a person remains in-frame for a given amount of time

FACILITIES MANAGEMENT



People Flow & Anomalies

Counts people and identifies traffic patterns via heat maps



Crowd Detection

Identifies the formation of large groups of people



Vehicle Gate Automation

Automates vehicle gates for delivery vehicles and school buses



Hard Hat Detection (beta)

Detects the absence of proper hard hat usage



Proximity Detection

Identifies when people are in close proximity



Mask Detection

Identifies when people have their faces covered



Slip & Fall (beta)

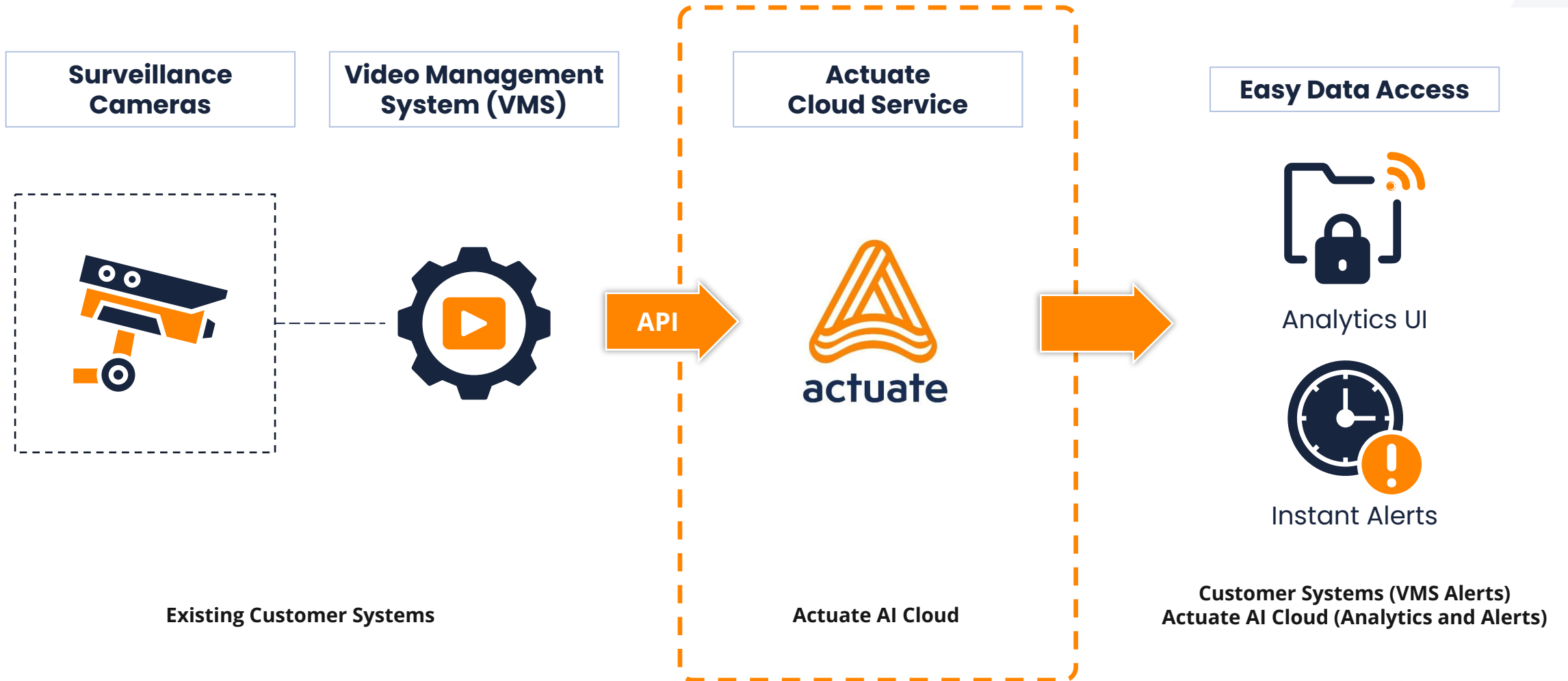
Identifies when person falls to render aid



Fire Detection (beta)

Detects the presence of a fire, both indoors and outdoors

Easy Integration: No Hardware Required



* Actuate can integrate with any VMS based on customer demand, except Ubiquiti, and is currently a certified partner for most top VMS providers.

Instant Alerts: Stop Guns, Loitering, Intruders, Crowds



One-time link sent instantly via SMS or email enables secure access and data sharing

VMS Alerts (not shown) provide alert info in existing VMS

Easily browse detections to identify and react to a situation



Livestream included for ease of access

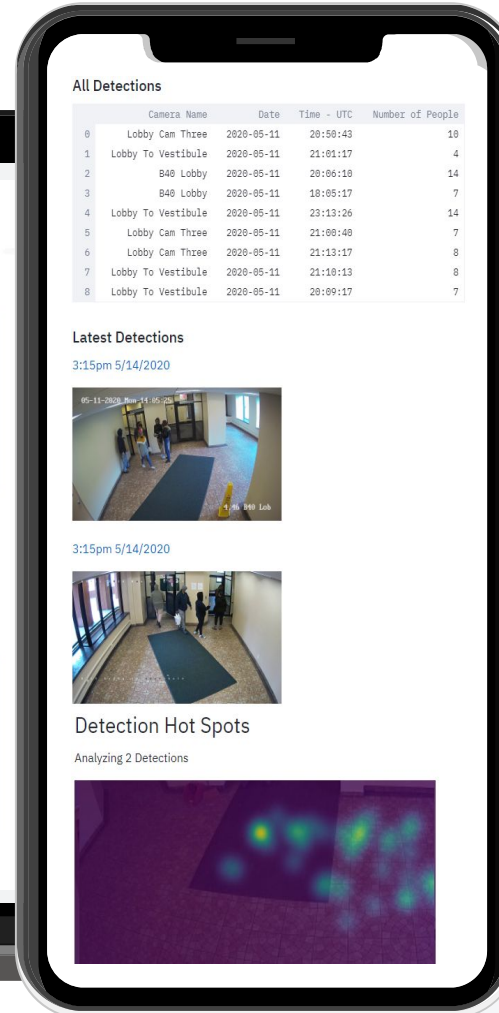
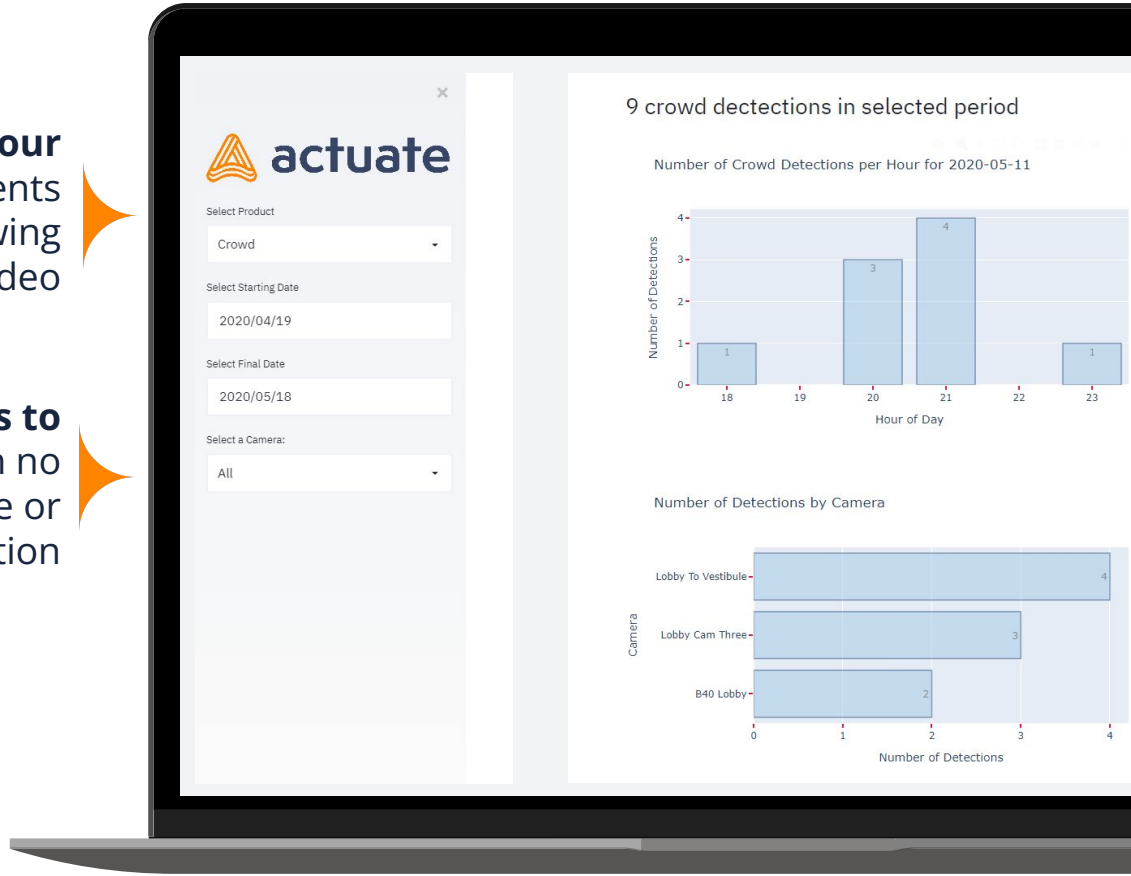
Highlights threats for easy identification and validation

Analytics UI: Identify and Leverage Patterns

Secure web (below) and mobile (right) UI available from anywhere

Search your buildings for events without reviewing raw video

Add AI analytics to cameras with no new hardware or software installation

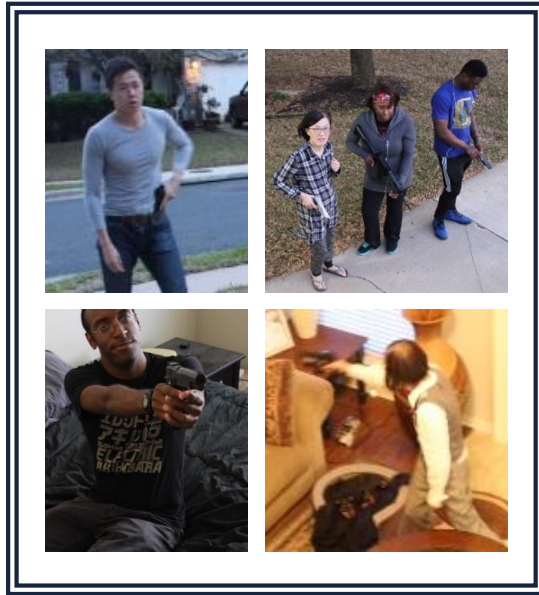


Identify patterns over time, enabling better management

Find hotspots and address recurring problems

How Does It Work?

Actuate's proprietary dataset and AI algorithms enable industry-leading real-time threat detection



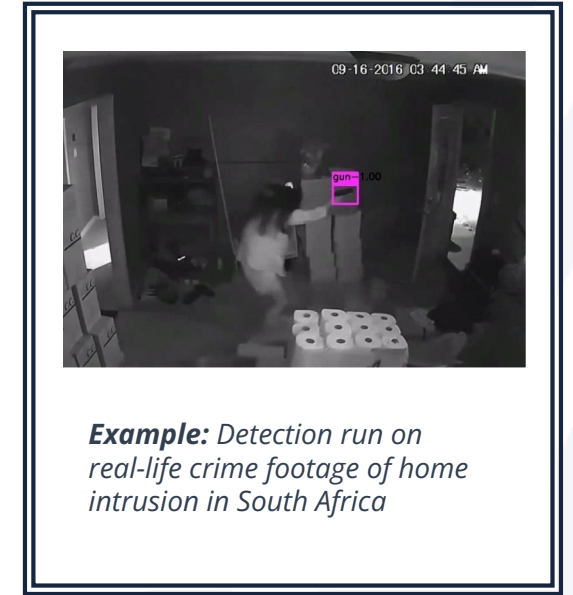
Proprietary Dataset

1M+ unique images gives us 99%+ accuracy



Custom AI Algorithms

In-house AI system running on high-end cloud servers



Example: Detection run on real-life crime footage of home intrusion in South Africa

Industry-Leading AI

Best-in-class performance, accurate up to 100 ft

Current Customers



Actuate helps a diverse set of customers drive improved security, facilities management, and cost savings

Featured Customers



Deployed on
50,000+
Cameras



genesis
SOLAR · TECH · SECURITY

Remote Monitoring Company
Intruder / Vehicle Detection



EYEFORCE
REMOTE GUARDING SOLUTIONS

Remote Monitoring Company
Intruder / Vehicle Detection



Army Futures Command
Gun Detection (Munitions)

Other References Available Upon Request

**Public K-12 School District
in Greater Seattle**

Gun Detection

**Private K-12 School in
Greater Chicago**

Gun Detection

**Private K-8 School in
Greater Chicago**

Gun Detection

**Retail Development
in NYC**

Retail Analytics
Gun Detection

**Corporate
Headquarters in
SF Bay Area**

Gun Detection
Social Distancing
Intruder and Loitering