

Model code

Series

F+P - 16 - 20SR - 6112 - 12X - A - ...

Nominal size

Connection type

To DIN 2353

Material code (MC)

••••

Housing material

6 = carbon steel

Material of ball and spindle

1 = carbon steel

Material of sealing cups (ball seal)

1 = POM

Material of seals

2 = NBR

Switching handle

02X= enclosed unassembled  
12X= mounted

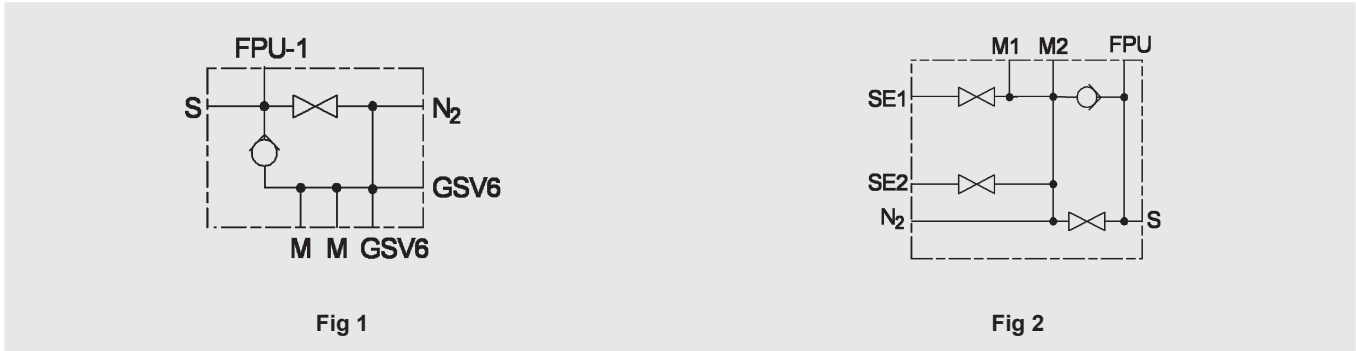
Protective coating

No details = no protective coating  
A = zinc-plated / phosphatized

Additional details

e.g. GSV-MV = with redundant protection against excessive pressure increase. For further technical details, see product information No. 10000794442

4.1.4 Standard item



Carbon steel, NBR

Designation	Max. operating pressure [bar]	Weight [kg]	Part no.	Seal kit <sup>1)</sup>	Fig.
F+P-16-20SR-6112-12X	400	4.3	850233	2115776	1
F+P-32-38SR-6112-12X	350	14	552193	2112088	1
F+P-32-38SR-6112-12X-A-GSV-MV	350	21.4	4241832	2112088	2

<sup>1)</sup> Recommended spare parts

Pressure gauge connection (optional)

20

G1/4 ISO1179-1

26

50

5

27

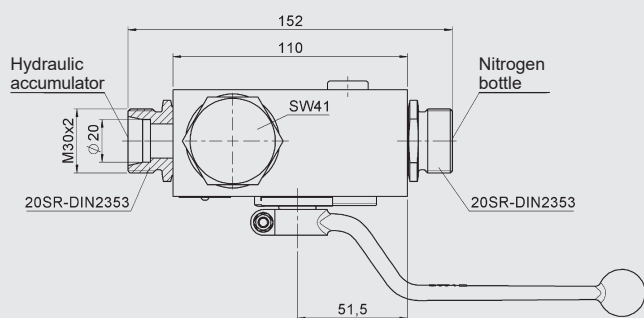
61

100

137

1/2 O1179-1

Pressure gauge connection (optional)



As per Customer

120

108

15

4 Mounting bores

$\varnothing 11$

115.5

7.5

G1/2 ISO1179-1

30

65.5

69.5

20

G1/2 ISO1179-1

Gas safety valve

GSV6 (optional)

184

