



ONRG

Onkar Nath Rajeev Gupta

Since 1997



“Your Safety is Our Priority”

Edition 2023



Our Warehouse





ONRG is a renowned name that spells and pronounces Safety with a wide range of Transmission Tools and all kinds of Ropes in a unique way. Founders of ONRG, Onkar Nath and Rajeev Gupta decided to build a company AND having completed 25 years of commitment showed sustained growth year over year. It is a matter of great pride to see the trust we have built upon for our associated distributor companies –

- ☐ **Garware Technical Fibres**
- ☐ **Karam Safety Pvt Ltd**
- ☐ **Bedmutha Wire Ropes**
- ☐ **Hillson Footwear**
- ☐ **Tata Agrico**

Keeping in pace with changing business culture during COVID lockdown, ONRG is proud to partner with Rachit Raj Gupta for business outreach and continue to support him in his entrepreneur journey.

- Listings in all e-commerce platform
- Life essential supplies during lockdown in all hospitals and nursing homes
- Safety Training Sessions – Civil Defense Prayagraj, ITD Cementation, SP Singla, etc

Today, we look to the future and with full confidence and enthusiasm we are ready for the next 25.

“Your Safety is Our Priority”



Onkar Nath



Rajeev Gupta

Global Outreach



*Exporting to more than
25 countries*

Our Achievements





Index

<input type="checkbox"/> ROPES & SAFETY NET	01
<input type="checkbox"/> WIRE ROPE & CLAMPS	03
<input type="checkbox"/> SAFETY HELMET	05
<input type="checkbox"/> SAFETY SPECTACLES	06
<input type="checkbox"/> SAFETY SHOES	07
<input type="checkbox"/> FALL PROTECTION HARNESS	09
<input type="checkbox"/> HAND GLOVES & MASK	11
<input type="checkbox"/> COMPRESSOER & WINCH MACHINE	18
<input type="checkbox"/> HAND TOOLS	20
<input type="checkbox"/> FIRE SAFETY	21
<input type="checkbox"/> ROAD SAFETY	22
<input type="checkbox"/> TENTS & PLASTIC	25

Ropes & Safety Net



GARWARE
TECHNICAL FIBRES



PP Rope

- Brand-Garware Technical Fibres
- 3strand Industrial Polypropylene Rope Confirming to IS5175:1992 P.P Rope 220 meter coil
- High Breaking Strength & Shock absorption capacity
- Available in sizes 4mm to 48mm with standard coil length 220meter
- Useful for Tower Erection & Cable Pulling

Maxima Rope

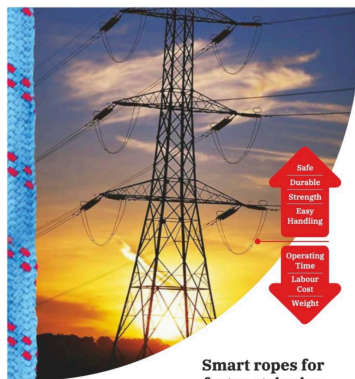
- Brand-Garware Technical Fibres
- Diameter 4mm to 48mm & standard coil length of 220/500 meter.
- Greater economy due to higher runnage & higher breaking strength.
- Light in weight
- Unaffected by chemicals & saline water.
- Better dimensional stability
- UV resistant.



GARWARE
PLATEENA NEO

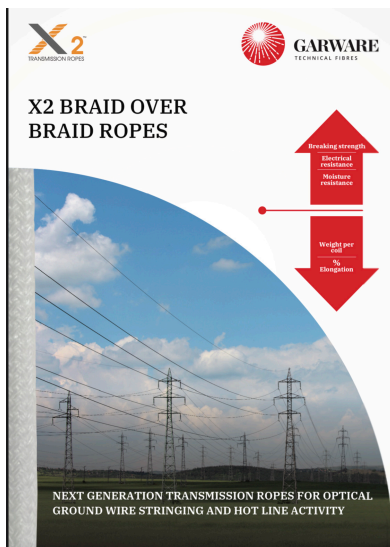


GARWARE
TECHNICAL FIBRES



Plateena Neo Rope

- Brand-Garware Technical Fibres
- 1/7th times lighter than Steel Wire Rope
- Breaking Strength equivalent to anti twist Steel Wire Rope
- Swift Operations in Hilly Areas
- Cost saving on Manpower.
- No lubricants required.



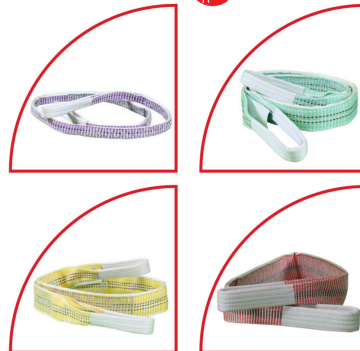
X2 Rope

- Brand-Garware Technical Fibres
- Made of Specialty Polyolefin Fibre
- Does not absorb moisture
- Special coating
- Braided Construction
- Non-conductor of electricity, hence effective in OPGW/Hotline stringing.
- Weight does not increase due to water retention
- Balanced rope geometry ensures non-hocking, hence efficient in handling.

Lifting Web Sling

- Brand-Garware Technical Fibres
- Garware Pro Slings are CE marked
- Comes with 100% Guaranteed Breaking Strength
- Better abrasion resistance
- Better cut resistance
- Better gripping

OUR SLINGS



Safety Net

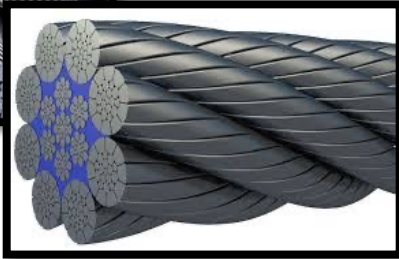
- 2.5mm Braided Safety Net, 25mm SQ with or without knotless containment net.
- Dimension- 10x3 & 10x5



Shading Green Net

- Width: 3 Mtr, Length: 50 mtr
- 75% Transparency

Wire Ropes & Clamps



Bedmutha Wire Rope

Design parameters are tested with comprehensive testing in quality laboratory, which supports the ultimate rope performance parameters like breaking force, rotation resistance, fatigue, MOE, etc.

Wire Rope Slings

We manufacture and can provide customised wire rope slings as per the customer requirement.



Anti Twist Pilot Wire

Pilot wire rope available in 800 mtr & 1000 mtr coils

Dee Shackle

- Dee shackle , Alloy Steel Dee shackle- Quenched & Tempered.
- Average Working Load limit to ultimate breaking load is 6 to 1 upto 50 tonnes.5 to 1 from 62 tonnes and over.



U Clamps

Available in 2mm, 4mm, 6mm, 8mm, 10mm, 12mm.



Pulling and Lifting Machine

- Brand- V-Tal
- SM Model
- Overload Protection
- Portable & Lightweight
- Telescopic Handle allows the operator to optimize pull and stroke.
- Long service life.

Ratchet Lever Hoists

- Brand- V-Tal
- Locked Chain release mechanism
- Knobbed hook
- Automatic switching to free pulley mode.



Chain Pulley Block

- Capacity- 0.5, 1.0, 1.5, 2.0, 3.0, 5.0, 10, 20, 30 Tons.

Hydraulic Conductor Cutter

The cutter is suitable for cutting ACSR conductors up to 40 mm diameter.

Make: ONRG

Model- CPC-40BL

Weight- 8KG

Cutting Capacity- <ACSR720



Digital Dynamometer 10 Ton

Digital Dynamometer

- Capacity: 10 Ton
- Digital Display
- Remote Access

Helmets



- **PN 501**
- Made of specially formulated Polymer
- Triple Corrugation for enhanced strength.
- Provided with Side Slots for fitting face and hearing protection accessories.
- Adjustable Chin Strap
- Comes with Manual Adjustment to suit most head sizes.
- Conforms to IS 2925:1984

- **PN 521**
- Made of specially formulated Polymer
- Triple Corrugation for enhanced strength.
- Provided with Side Slots for fitting face and hearing protection accessories.
- Adjustable Chin Strap
- Comes with **Ratchet type adjustment** to suit most head sizes.



- **PN 542**
- Comes with a Protective Peak
- Made of High density Polyethylene
- Reinforced Ribs profile for better impact resistance
- Provided with side slots for fitting face and hearing accessories
- Unique Rain Management System which effectively manages the rain to reduce the flow of water down the neck.

- **Guard Helmet**
- Conforms to IS 2925:1984
- Adjustable Chin Strap
- Suitable for Site Workers





Eye Protection



ES 001

- Construction sites; areas where sand and large dust particles are blowing at high speed.
- Metal - processing shops.

ES 005

- Made with Nylon frame and Polycarbonate lens which offers lighter, exceptional impact and splash protection with excellent vision when it comes to fashion and styling,



ES 004

- Electric- Arc Welder's Choice
- Best suited for electric arc welding, mig, tig and other electrical welding operations

ES 009

- Chemical Environment User's Choice
- Providing fail-proof protection against liquid and chemical splashes, the ES 009 comes with a unique wrap-around design and a specialized anti- fog lens.



Ear Protection



EP 01 (Uncorded) and EP 02 (Corded) Disposable Foam Ear Plugs

EP 22

Ear Muff Foldable Deluxe





Safety Shoes



FS 210

- Ultra-light weight and flexible
- Extremely comfortable
- Provides protection against electrical hazards
- 100% metal-free shoe
- Highly breathable
- Equipped with strongest sole bonding

FS 05

- Worker's Safety Shoe providing safety with comfort.
- Single density PU sole.
- Cleated Outsole with wider cleats for higher grip and self cleaning effect.
- Antistatic, Oil/Acid Resistant, Anti Slip and Heat Resistant with shock absorbing property, Anti Fatigue.



Hillson Swag

- Hillson SWAG 1904 holds a great color combination with its dual color tone. It is a trendy safety shoe that works on the statement style bhi safety bhi. The USP of the shoe is its breathable fabric and the TFP sole which provides anti-penetration properties to the shoe. It also has D-type anti-rust eyelets which helps in holding the feet and keeps the user's feet stable.



ONRG 010

- Worker's Safety Shoe providing safety with comfort
- Single density PU sole.
- Upper full chrome split leather
- Black lining with foam for extra comfort



ONRG 100

- Workers Safety shoes providing safety with comfort.
- PVC Sole

Hillson Torpedo Gum Boot

- With Steel toe
- 14 inch height
- Skin friendly
- Resistance against chemical, oil and fire
- Puncture-resistant sole



Hillson Gum Boot Welsafe

- 12 inch height
- Skin friendly
- Slip-in design
- Upper: Soft and Flexible PVC .Sole : Hard PVC



ONRG Gum Boot

- Regular Model
- 11 inch height



Karam Safety Harness



• KI 01 Harness

- Dorsal D-Ring
- Sit Strap
- Chest Strap
- Thigh Strap

• PN 206 Double Lanyard

- Rope ends sliced and covered with polyethylene protective sleeve.
- Abrasion resistant thimbles provided within loops
- One side loop and other equipped with Steel Scaffold Hook PN-131
- Twisted Rope is complying to ISO 1140

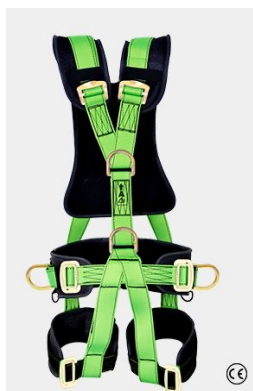
• KI 02 Harness

- Chest attachment Sternal D-Rings for fall arrest

- Dorsal D-Ring for fall arrest
- Sit Strap
- Chest Strap
- Thigh Strap

• PN 351 Lanyard

- 12 mm dia 3 Strands Twisted Polymide Rope
- Steel Screw-Locking Karabiner PN 112
- 2 nos. of steel scaffold hooks PN 131
- 1.5m, 1.8m, & 2.0m



• PN-56

- Attachment Elements - 1 Dorsal and 1 Sternal D-Ring for Fall Arrest. 1 Ventral D-Ring at waist level for Rope Access work and 2 Lateral D-Rings for Work Positioning
- Adaptability - Adjustable shoulder, thigh-straps and waist belt.





Fall Arrester & Rope



- **PN 2000A**
- The Rope Grab moves freely on the polyamide twisted rope anchorage line 14mm-16mm attached at its eye with the user while he moves up & down.



- **Twisted Polyamide Rope**
- Made up of Polyamide.
- Available in various lengths on request.
- Maximum Roll Size : 200mts
- Available in Dia of : 12mm, 14mm, 16mm

Retractable Blocks



- **PCGS05, PCGS06, PCGS07**
- Casing made up of high impact strength Polymer, to prevent breakage and is nearly indestructible.

Rescue Kit

Ref : PN 652

- Immediate Rescue equipment contained in the Kit enables immediate rescue of a personnel when suspended at height after suffering a fall.
- Comes with Easy Back Packable Carrying bag.





Garware Safety Harness



GARWARE
TECHNICAL FIBRES



Forked Restraint

GIS-05 Harness (CLASS A)

- A Dorsal attachment D-Ring for Fall Arrest. Adjustable Chest Strap and thigh straps for easy adjustment. Ideally positioned sit-strap for extended comfort.

Forked Double Lanyard

- Made of Polyester Rope (Dia 12mm)
- Length 2.0 mtr
- Equipped with 2 steel scaffold hooks
- Conforms to EN 354:2010

GIS-14 Harness (CLASS L)

- 2 Chest attachment Powder Coated D-Ring for Ladder-Climbing and a Dorsal attachment D-Ring for Fall Arrest. Adjustable Chest Strap and thigh straps for easy adjustment. Ideally positioned sit-strap for extended comfort.



Forked Restraint

Forked Double Lanyard

- Made of Polyester Rope (Dia 12mm)
- Length 2.0 mtr
- Equipped with 2 steel scaffold hooks
- Conforms to EN 354:2010



Comes with
Waist Pad

GIS-26 (CLASS L&P)

- 2 Chest attachment Powder Coated D-Ring for Ladder-Climbing and a Dorsal attachment D-Ring for Fall Arrest. 2 Lateral D-Rings at the waist level for work positioning.
- Adjustable Chest Strap and thigh straps for easy adjustment. Ideally positioned sit-strap for extended comfort.

Forked Double Lanyard with Energy Absorber

- Made of Polyester Rope (Dia 12mm)
- Length 2.0 mtr
- Equipped with 2 steel scaffold hooks, 1 karabiner and Energy Absorber.
- Conforms to EN 355:2002

Hand Protection



HS 01



HS 11



Natural Rubber
HS 121



Neoprene
HS 131



Liner Gloves



Nitrile Coated



Dotted Gloves



Leather Gloves



Face Shields

- Visor ES 51
- Welding Shield ES 71

Disposable Mask

- RF01 Grey
- RF02 + White
- 3 Ply Mask



Transmission Tools



Single Sheave Pulley 3ton Open Type & Close Type

- MS Steel body and frame
- Bearing Used: 6305-ZZ
- Center Pin : EN8
- Suitable for Rope 10mm to 24mm
- tested Load 3MT and safe working load 2.0MT

Single Sheave Pulley 5ton Open & Close Type

- MS Steel body and frame
- Bearing Used: 6305-ZZ
- Center Pin : EN8
- 22mm Eye Bolt
- Suitable for Rope 10mm to 24mm
- tested Load 5.0MT and safe working load 3.0MT



Single Sheave Split Pulley 8 Ton

- Hot roller MS Split Pulley ,lighter & Stronger than CI Pulley.
- Pulley coated with Black Powder to reduce corrosion.
- Centre Pin material is EN-8 of 25mm Dia.
- The Oval hook specification is IS8610.
- Safe Working Limit-8 tons,Breaking-16 Tons.
- Total Weight-7.1Kg Approx.

Equalizer Pulley

- Equalizer Pulley 10 Tons.
- The Frame Constructed of Steel.
- Pulley is made of cast iron on nickel plated MS Bush.
- The Eye specification is IS8610.
- WLL-10Tons and Test Load-13tons.





Double Sheave

- MS Steel body and frame
- Shank Hook type confirming to IS8610 pattern 25
- Center Pin : EN8
- Double wheel with groove dia Suitable for
- Rope 10mm to 24mm
- Tested Load 6.5MT and safe working load 5.0MT

Four Sheave Pulley

- MS Steel body and frame
- Swivel Type Eye Hook
- Bearing Used: 6305-ZZ
- Center Pin : EN8
- tested Load 13MT and safe working load 10.0MT



Six Sheave Pulley Oval Hook Type

- MS Steel pulley with Single bearing in each wheel
- Bearing used 6305zz
- Number of bearing used 6
- Center Pin: EN-8 dia 25mm
- Hook: 28mm Oval Hook

Derrick Pole

Dia of Pole	Thickness	Length of Pole	Suitable For
4 inch	5.4 mm	9 mtr (6+3)	132 Kva
5 inch	5.4 mm	9 mtr (6+3)	400 Kva
6 inch	7.1 mm	12 mtr (6+6)	765 Kva





Spacer Cycle

Used for inspection of conductors after construction. Has a foot operated brake and is made for either twin or quad conductors. Made out of mild steel sections and has nylon rollers.

Turn Table

Designed for winding/pay-out of earth wire or conductor when the drum is damaged or manual stringing is required in difficult terrain. Fabricated from mild steel sections with its shaft on tapered roller bearings in a cast iron shield. Foot-operated brake lever is also provided to stop rotation.



Turn Buckle

- Capacity 5Ton, 10Ton
- MS Steel body Cylinder
- MS Eye Bolt at both end

Patta Clamp

- 6 Bolts Patta Clamp & 10 Bolt Patta Clamp
- Material - MS
- Paint - Silver



Comalong Clamp

3 Bolt & 7 Bolt Clamps





Sag Plate

- Two MS Plate of 12 mm Thickness
- Four Nos. 1" Nut BSW thread
- Eight Nos. Washers as per drawing

Kitto Clamp

- Hot forged MS Body.
- Coated with Powder for reduce corrosion.
- Centre Pin material is MS of 25 mm Dia.
- Working Load limit 5 Tons



Pilot Wire Connector

Swivel Joint Made Of High Tensile Steel Mounted On Thrust Bearings. The Pulling Rope To The Sock Joint Mounted On The Conductor In Order To Avoid Twist Accumulating Available In 3t , 5t 10t , 20t,30t Capacity

Swivel Joints

Capacity- 3Ton, 5Ton, 10Ton, 20Tons Cap.

- Swivel Joint body made of MS Cold drawn bright bar
- Dual bearing in side - one thrust and one ball bearing
- MS Bobbin and MS Bobbin Pin



Temporary Mesh Sock Joints for ACSR and AAAC conductors.

Head-type temporary socks

Both end open type socks

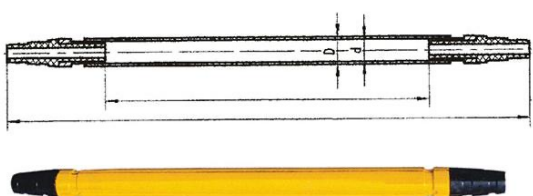


Five Sheaves Running Out Block

FIVE SHEAVES FIX FRAME, gravity die casted aluminium alloy sheaves fit For stringing 4 bundled conductors, mounted on sealed ball bearings ,groove lined with neoprene flaps (Shore hardness 68-78 shore A with minimum thickness at bottom of 6.5mm & tensile strength of 150-200 kgs/cmZ) For conductor protection, mounted on a steel Frame with standard plate attachment.

Self Gripping Automatic Clamp

The Self Gripping clamps are made up of high tensile special alloy steel, hot Forged, heat treated, precision machined and zinc plated, having balanced ratio between weight and working load as per international standards. The complete range of interchangeable liners suitable For ACSR, AAAC, HTLS, Antitwisting Rope, steel earth wire, copper conductors and special applications, anchoring and stringing. The liners are available in aluminum / aluminum steel conductors and bronze For copper conductors From Q10mm-41 mm



Cover Joint Protector

The cover joints are specifically designed to protect the mid span joint, made at the "Tensioner Station", during conductor stringing operations.

The cover joints consists of two shells made of Special seamless pipe drawn as per Conductor Requirement with shaped ends to house the rubber hoses, Center Free space as per conductor Hexagonal Crimp and Mid Span Joint Lengths (after compression).

Hanging Pulley

Cradle block specially designed For replacing the existing ground wire(GW) with optical grounding wire (OPGW)cables.

It is made of two galvanized steel half-Frames linked by a ring with swivel plate.





Motorised Hydraulic Compressor Machine

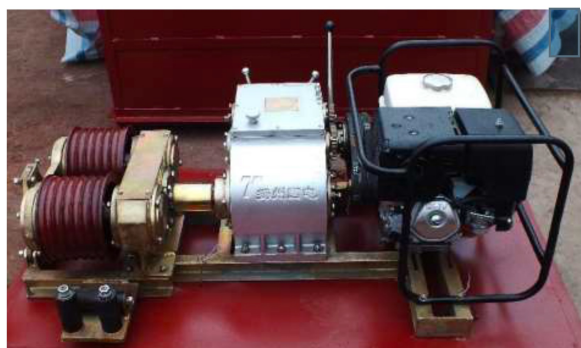
2.2. POWER UNIT (Ultra-High Pressure Hydraulic Pump Station with dual speed and direct coupling)

Model No.	Engine (gasoline)	Power (HP)	W.P. (Mpa)	Max.P. (Mpa)	Liquid Delivery		Tank (L)	Mass (kg)
					H.P. L/min	L.P. L/min		
HPP-65	Honda Gx160	6.5	63 - 80	94	1.8	8	10	60

Model No.	Max.Cap. (T)	W.Press (Mpa)	Max. P. (Mpa)	Max. Applicable Joint Dia. (mm)	Max Stroke (mm)	Mass (kg)
PHS-06	70	63 - 70	75	50	30	19
PHS-10	100	63 - 80	94	64	30	32
PHS-12	125	63 - 80	94	65	30	53
PHS-15	150	63 - 80	94	80	30	76
PHS-20	200	63 - 80	94	80	30	85

Manual Hydraulic Compressor Machine 100 Ton & 150 Ton

- Max Pressing Force- 100 Ton
- Max Oil Pressure- 700 bar
- Oil delivery volume per pumping-1st Stage:6.25 cm³
2nd Stage: 1 cm³
- Oil Tank Capacity- 2.2 Lt
- Die Weight: 6Kg
- Max Stroke: 20mm

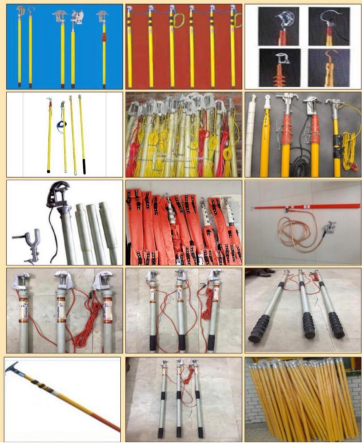


Double Capstan Engine Winch Machine

SPECIFICATIONS:

DOUBLE CAPSTAN ENGINE WINCH (belt-pulley power transmission type)			
MODEL	DWG-53B(petrol engine) / DWD-53B(diesel engine)		
SPEED STEPS	III	II	I
RATED PULLING (KN)	10	25	50
MAX.PULLING (KN) at which engine gets stalled	16	35	72
PULLING SPEED (m/min)	30 / 28 (+/-10%)	16 / 15 (+/-10%)	6 / 5.5 (+/-10%)
ENGINE	HONDA GX390,13PS/3600rpm / Diesel R180, 5.67kw/2600rpm		
CAPSTAN	7 Nos. of Grooves of 204mm /243mm/285mm bottom diameter		
MAX.SUITABLE ROPE(mm)	18		
MASS (kg)	270 / 300		

DISCHARGE ROD / OPERATING ROD



Discharge Rod

- 400kva Discharge Rod telescopic Type In 3 Section FRP Base Copper flexible cable with brass "C" clamp. Size 35 Sq mm X 1 Core X 8Mtrs length
- 11/33 KV Discharging Rod Telescopic type, In 4 Section, FRP Base, With Cable, Clip and Canvas Cover. Rod Extendable Up to 18feet. Copper Flexible Cable Size: 16sqmm X 1core X 8 mtr with Allu C Clamp

Sagging Scope for Transmission

Suitable for accurate conductor sag measurements and equipped with a special anchor support for steel tower

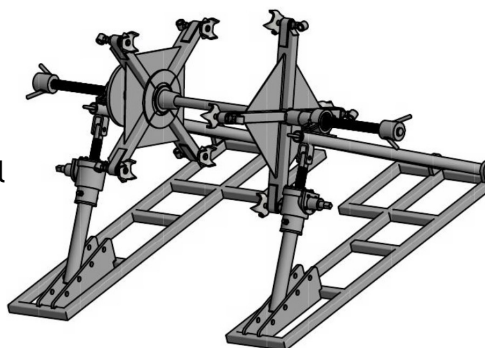


Hydraulic Drum Lifting Jack

- All Steel Construction
- Easy to assemble
- Disc Braking System
- Capacity 7 Tons
- Can be use with all type of conductor Drum
- Normal Pull force on conductor

Drum Lifting Jack Manual

- 1- Center Shaft of EN-8 Material
- 2- Main crank half round bushes are of Gun Metal
- 3- Jack Shaft screw of EN-8 Material
- 4- Jack bevel gear are of Hardend Steel
- 5- Jack Housing box of Cast Iron
- 6- All material are MS and MIG welded
- 7- Effective movement of jack screw 300mm
- 8- Effective jack height adjustment from bottom stand 1500mm





Hand Tools

TATA
AGRICO

Crowbar

Crow Bar – 32mm (32X1650)

Weight : 10.5kg

Tata Socket-Set

24 Piece Set

Tem Dimension: 25 x 7.5 x 35 cm

Item Weight: 4100 Grams



Tata Spanner Set

Combination Spanner Sets (Box Pana Set) consist of Double ended spanners with an open end & a ring end. It is multipurpose with a range of sizes to suit all purposes.

Tata Double Sided Wrench

- Set of 8
- Colour: Silver



Fire Safety



ABC STORED PRESSURE TYPE FIRE EXTINGUISHER

- UFS dry powder type extinguishers are designed for protection of light and ordinary hazards.
- Suitable for A,B,C & E fire classes such as wood, paper, plastic, rubber, flammable liquids, gases and electric fire.



CARBON DIOXIDE FIRE EXTINGUISHER - PORTABLE TYPE

- CAPACITY: 2 & 4.5 KGS
- Carbon dioxide fire extinguishers are designed to protect area where class B & C (flammable liquids and gases) or class C (energized electrical equipment) fires could occur.



ABC STORED PRESSURE TYPE FIRE EXTINGUISHER & CO2 FIRE EXTINGUISHER

ABC: 1KG, 2KG, 4KG, 6KG, 9KG
CO2: 4.5 KG

Safety Fire Bucket With Stand

- Stand with four buckets or more
- 9 Litres capacity bucket as per IS standard





Road Safety



Speed Breaker

- Dimension: 250mm x 350mm x 50mm / Reflector both sides
- Speed humps are raised devices, parabolic in shape, placed across the road to slow traffic.

Safety Road Cone

- Dimension (mm) : 760, 390X390 (Height, Bottom Square)
- Weight : 1.200 kg
For Reflections : Reflective Sleeve 4"



Traffic Road Barrier

- Dimension (mm) : L2100 X W580 X H1020 (mm) Water Filling Capacity 100 Ltr.

Spring post

PU Flexible Post - H2FPPU2
H-710(mm), Diameter : 75 mm.
Reflective Tape : 3 Inch x 2 Pcs



Solar Delinator / Blinker

Size: 85 mm (D) x 150
Material: Polycarbonate & ABS
Solar Panel: Mono Crystalline 4V, 300ma
Battery: 2X1.2 Volts, 1600 mAh
Backup: 36 hours after full charge
Water Proof: IP67



Loto Kit



Loto Kit

- Electrical Loto Kit
- Metal Box

First Aid Box

- Available in 2 sizes
- With Medicine



Walkie Talkie

- Make: Talk Pro
- Model: LF446
- Range: 4-6 Kms
- License Free

Binocular

- Make: Bushnell
- 20x50
- Colour: Black
- Weight: 851 g
- Range: 700 mtr



Long Range Search Light

- Rechargeable Battery
- 2 Mode Flashlight
- Battery capacity: 2800 maH



Life Jacket

- Make: Anchor
- Suitable for up to 90 Kg



Life Jacket

- Make: Sea Master
- CERTIFICATION: ISO / CE (EUROPEAN CERTIFICATION) / EC TYPE APPROVAL CERTIFICATE / TESTED FROM INDIAN GOVERNMENT APPROVED LABORATORY.



Life Buoy Ring

Convex Mirror

Convex mirrors are used at blind curves, parking lots, basements to give visibility of the approaching vehicle from the other side



ONRG Caution Tape & 3M Radium Tape



Reflective Jackets

- Different Designs available for different purposes.
- Sizes - Free Size





Tents & Plastics



EP Tent
Size- 18*18ft

Swiss Cottage
Size- 12*12ft



Labour Tents
Size- 14*14ft

Techpaulin Plastics

Techpaulin is a Multi layer multi axis Oriented X cross laminated film (MOX) product. Techpaulin is available in all popular standard formats & sizes, ready to use carpet / sheet & roll form also available for customization.





Scan to open in your device



Registered Office:
154 KL Kydganj,
Triveni Road,
Prayagraj- 211003
Uttar Pradesh
India

Branch Office
663, K. N. Kydganj,
Prayagraj-211003
Uttar Pradesh
India

Branch Office
29/18 Hasting Road,
Ashok Nagar,
Prayagraj-211003
Uttar Pradesh
India



Contact: +91 9415239464
+91 9555007935

E-mail: info@onrg.co.in
Website: www.onrg.co.in

