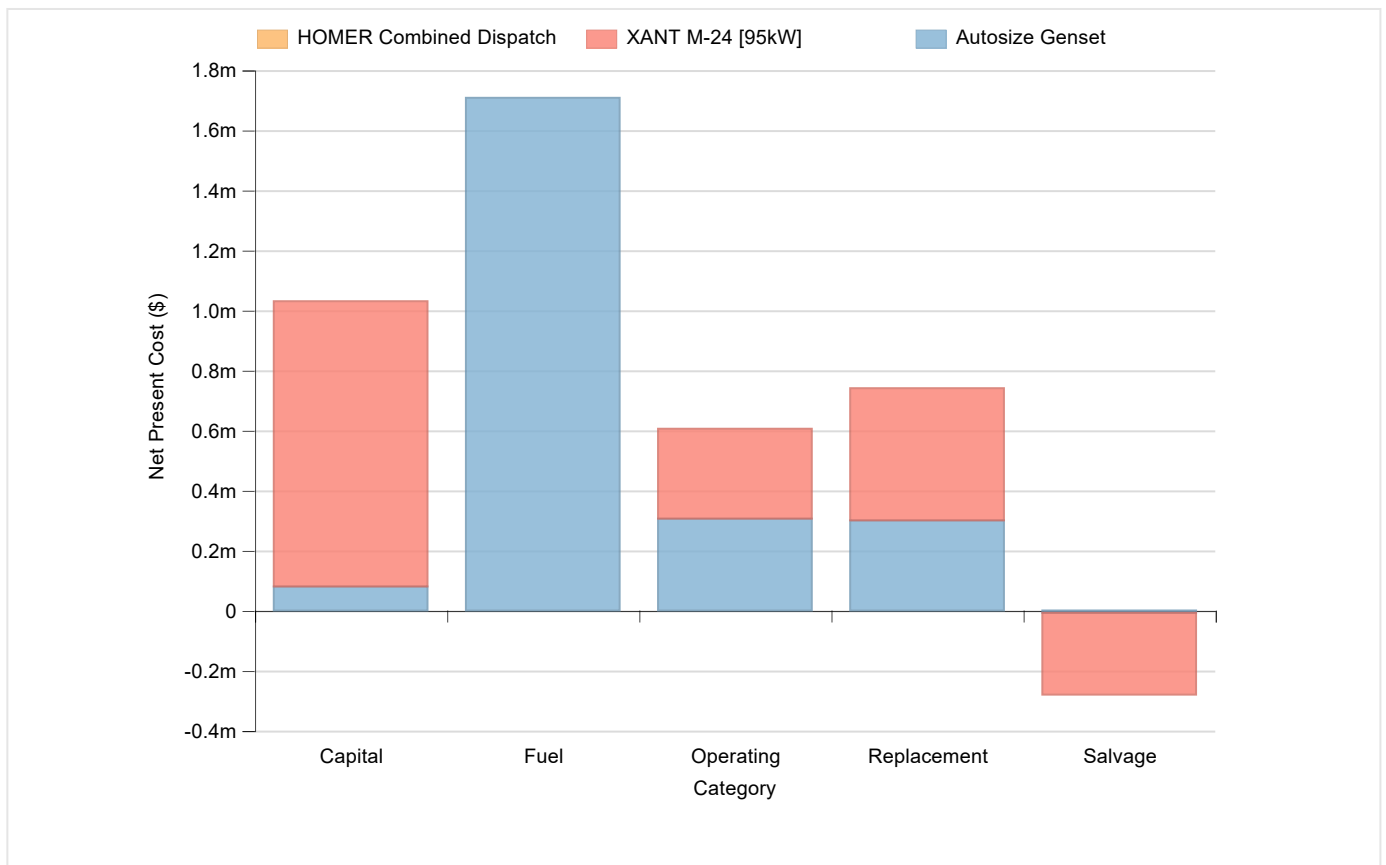


System Report

System architecture

Wind Turbine	XANT M-24 [95kW]	2	
Generator	Autosize Genset	160	kW
Dispatch Strategy	HOMER Combined Dispatch		

Cost summary



Cost Summary

Total net present cost	3802908	\$
Levelized cost of energy	0.567	\$/kWh

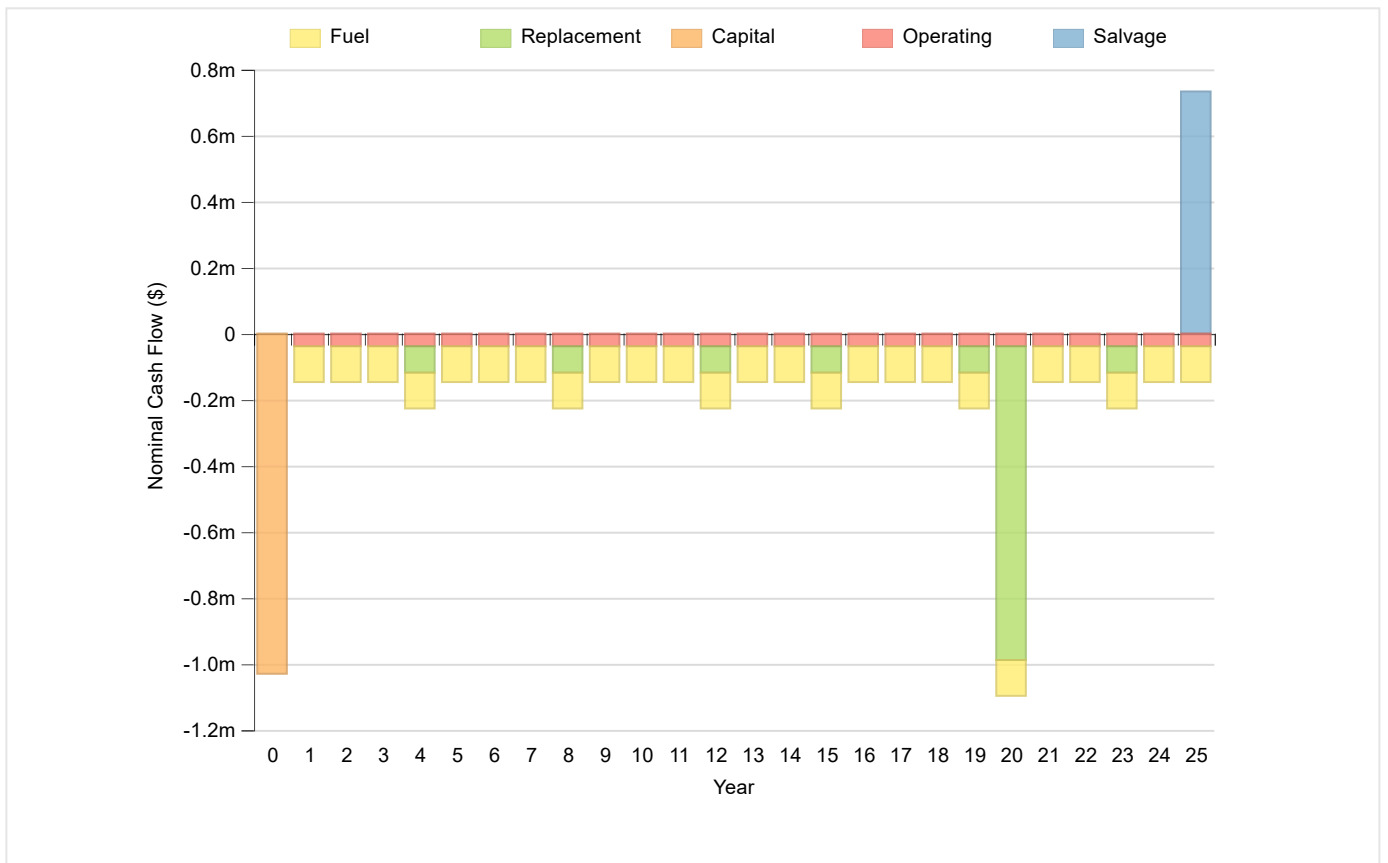
Net Present Costs

Component	Capital	Replacement	O&M	Fuel	Salvage	Total
-----------	---------	-------------	-----	------	---------	-------

Component	Capital	Replacement	O&M	Fuel	Salvage	Total
XANT M-24 [95kW]	950,000	440,159	299,296	0	-272,360	1,417,095
Autosize Genset	80,000	300,137	306,000	1,707,474	-7,798	2,385,813
HOMER Combined Dispatch	0	0	0	0	0	0
System	1,030,000	740,296	605,295	1,707,474	-280,158	3,802,908

Annualized Costs

Component	Capital	Replacement	O&M	Fuel	Salvage	Total
XANT M-24 [95kW]	60,308	27,942	19,000	0	-17,290	89,961
Autosize Genset	5,079	19,053	19,426	108,395	-495	151,457
HOMER Combined Dispatch	0	0	0	0	0	0
System	65,387	46,996	38,426	108,395	-17,785	241,418

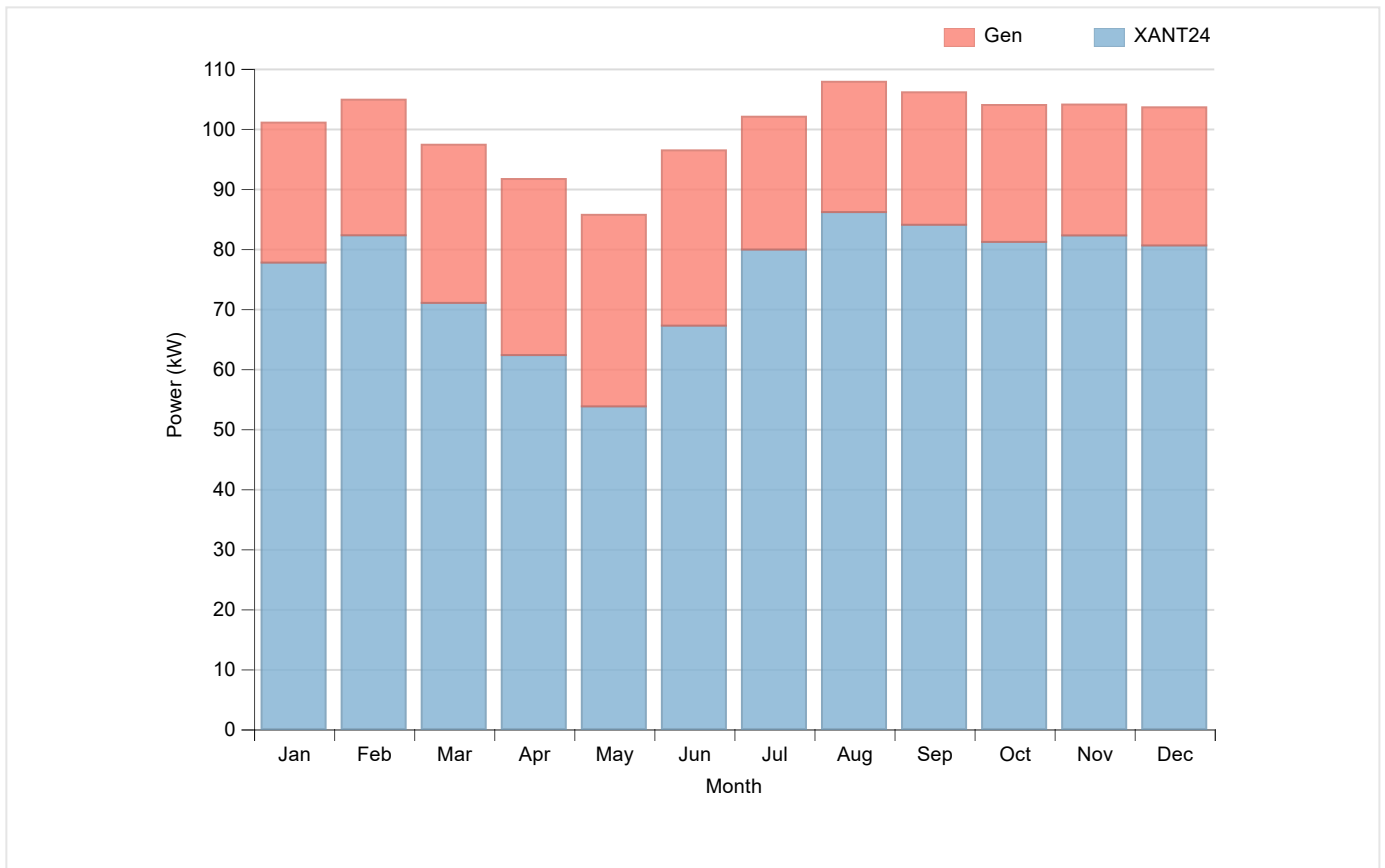


Electrical

Quantity	Value	Units
Excess electricity	452922	kWh/yr
Unmet load	0	kWh/yr
Capacity shortage	0	kWh/yr
Renewable percent	49	%

Component	Production(kWh/yr)	Percent (%)
Generator	216,204	25
Wind Turbine	662,307	75
Total	878,512	100

Load	Consumption(kWh/yr)	Percent (%)
AC primary load	425,590	100
DC primary load	0	0
Total	425,590	100

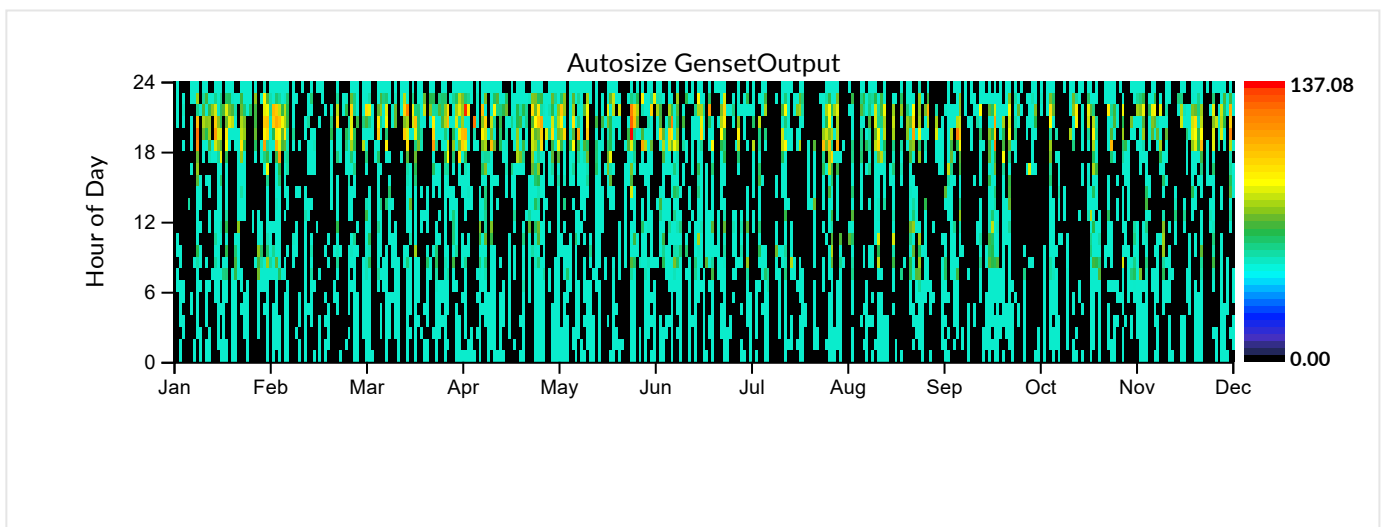


Wind Turbine:XANT M-24 [95kW]

Quantity	Value	Units
Total rated capacity	190	kW
Mean output	76	kW
Capacity factor	39.79	%
Total production	662307	kWh/yr
Minimum output	0.00	kW
Maximum output	190.00	kW
Wind penetration	155.62	%
Hours of operation	7432	hrs/yr
Levelized cost	0.136	\$/kWh

Generator:Autosize Genset

Quantity	Value	Units
Hours of operation	4047	hrs/yr
Number of starts	772	starts/yr
Operational life	4	yr
Fixed generation cost	17.38	\$/hr
Marginal generation cost	0.37	\$/kWh
Electrical production	216204	kWh/yr
Mean electrical output	53	kW
Min. electrical output	48	kW
Max. electrical output	137	kW
Fuel consumption	69932	L/yr
Specific fuel consumption	0.32	L/kWh
Fuel energy input	688130	kWh/yr
Mean electrical efficiency	31	%



Emissions

Pollutant	Emissions	Units
-----------	-----------	-------

Pollutant	Emissions	Units
Carbon dioxide	183055	kg/yr
Carbon monoxide	1154	kg/yr
Unburned hydrocarbons	50	kg/yr
Particulate matter	7	kg/yr
Sulfur dioxide	448	kg/yr
Nitrogen oxides	1084	kg/yr