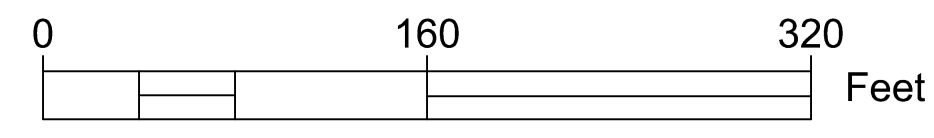
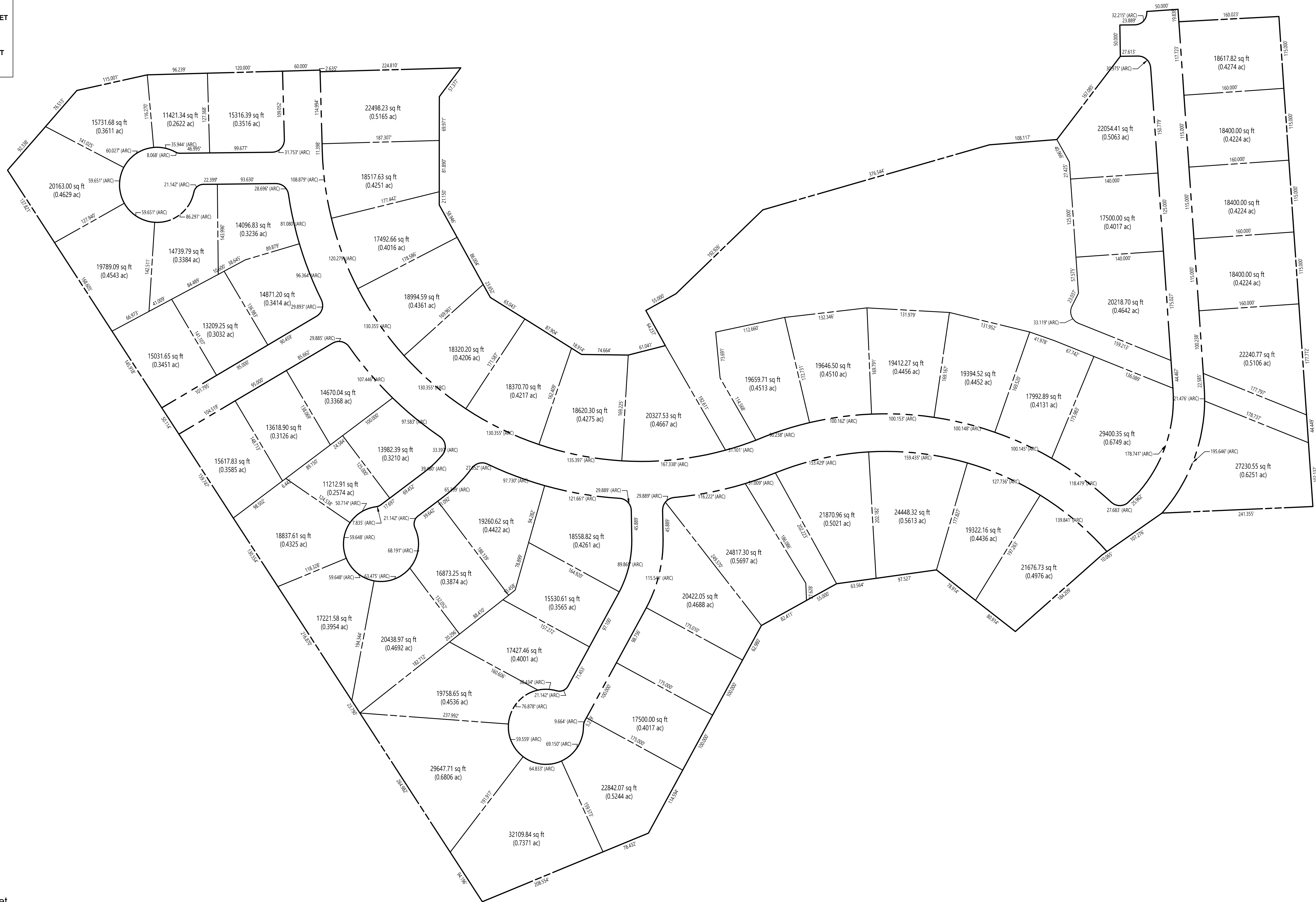


BENCHMARKS	
TBM #1	COTTON SPINDLE SET IN POWER POLE APPROX. 50 FEET NORTH OF THE INTERSECTION OF VAL VERDE AND FOSSIL RIM RD. (10516899.26, 3233279.11) ELEV: 598.18'
TBM #2	COTTON SPINDLE SET IN POWER POLE APPROX. 1470 FEET SOUTH OF TBM 1 ON EAST SIDE OF VAL VERDE RD. (10515678.97, 3234084.64) ELEV: 574.00'
TBM #3	COTTON SPINDLE SET IN POWER POLE APPROX. 3150 FEET SOUTH OF TBM 1 ON EAST SIDE OF VAL VERDE RD. (10514279.12, 3235008.77) ELEV: 563.88'
TBM #4	COTTON SPINDLE SET IN POWER POLE APPROX. 185 FEET SOUTH OF TBM 3 ON WEST SIDE OF VAL VERDE RD. (10514092.39, 3235059.41) ELEV: 563.82'



V:\210849 - West End Phase II\Engineering\Plan\Working\210849-01-001.dwg, 2/10/2024 3:05:00 PM, frcz.jpl

Bowman
 © 2023 Bowman Consulting Group, Ltd.
 T&E Firm Registration No. F-14309
 1230 W. Magnolia Ave
 Fort Worth, Texas 76104
 Phone: (214) 484-8586
 www.bowman.com

REVISION	DATE	DESCRIPTION

WEST END SUBDIVISION AT VAL VERDE - PHASE II
 LOTS 22-58, BLOCK 1, LOTS 32-37, BLOCK 2 & LOTS 2-23, BLOCK 3
 CITY OF WACO, MCLENNAN COUNTY, TX



THE LOCATION OF EXISTING UNDERGROUND UTILITIES ARE SHOWN IN AN APPROXIMATE WAY ONLY. THE CONTRACTOR SHALL DETERMINE THE EXACT LOCATION OF ALL EXISTING UTILITIES BEFORE COMMENCING WORK. CONTRACTOR AGREES TO BE FULLY RESPONSIBLE FOR ANY AND ALL DAMAGES WHICH MIGHT BE OCCASIONED BY THE CONTRACTOR'S FAILURE TO EXACTLY LOCATE AND PRESERVE ANY AND ALL UNDERGROUND UTILITIES.

DESIGN	DRAWN	CHKD
SG	NP, RP	SG
JOB No. 210849-01-001		
SHEET		
OF 81		

PRELIMINARY NOT FOR CONSTRUCTION