

DPHI Awarded \$1.1 Million for Delta Initiatives

Supporting Health Advances for Rural Employees (SHARE)

Worksite Wellness Initiative

DPHI, in partnership with Winrock International, will develop training curriculum for community health workers and clinic systems using the Total Worker Health model and provide workplace initiatives for policy and system change to support a healthy workforce in rural communities of Mississippi, Chicot, Phillips, and St. Francis counties.

Community Leaders Empowered with Adaptation and Response (CLEAR)

Community Technical Assistance

DPHI, in partnership with Winrock International, will provide technical assistance to leaders in Hamburg, Lewisville, Camden, Norphlet, and Stephens to address the outcomes of their needs assessment. DPHI will support strategies to improve health, economic development and public spaces such as parks, community centers, and to build a culture of health.

DPHI Community Resiliency Toolkit

DPHI, in partnership with the Arkansas Community Foundation, is providing technical assistance for community preparedness and resiliency to rural mayors in an effort to prepare for public health emergencies and the overall wellness of their communities. DPHI will provide training on best practices during a public health emergency and preparedness strategies for future resurgence.

DPHI delivers more than 5,700 COVID-19 Vaccines to Delta Communities



DELTA COMMUNITY CHAMPIONS OF HEALTH INITIATIVE

In partnership with the Arkansas Department of Health, DPHI will provide technical assistance to the communities of Marked Tree, West Memphis, Blytheville, Marvell and Jonesboro by establishing a community-based program with a primary goal to empower and provide leadership training to Delta Community members on prevention measures against COVID-19 and capacity building to address upstream factors that contribute to health disparities.

CONGRESSIONAL HEALTH POLICY FELLOWSHIP PROGRAM

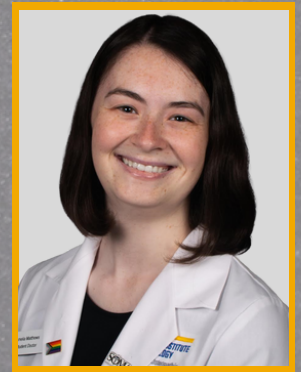
Fellows collaborate with the Congressional office of the First District of Arkansas to serve as health policy liaisons and provide evidence-based policy recommendations for positive health impact in Delta Communities.



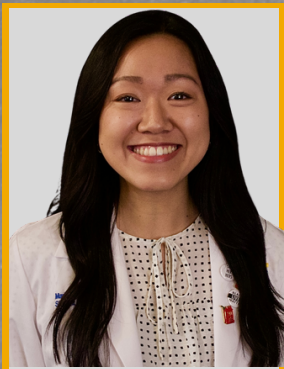
Joshua Deusing
Class of 2025



Jasmine Stewart
Class of 2025



Amelia Matthews
Class of 2024



Marie Fong
Class of 2025



Erika Levy
Class of 2023



Connor Gibbs
Class of 2023

If you are interested in building a culture of health in your community please contact:

Yoshara Barber
Regional Program Director
ybarber@nyit.edu

DELTA NYIT CARE-A-VAN

Inspiring Healthy Communities



**DELTA
POPULATION
HEALTH
INSTITUTE**

SERVICES:



Preventive Care



Health Screenings



Mental Health Screenings



Health Education



Telehealth Services



Children and Women Health



Referral to local healthcare providers and social services

The Delta Care-A-Van is a mobile medical unit used to improve the quality of health through health services and education in rural communities in the Mississippi Delta Region.

The Delta Care-A-Van makes regular stops in communities throughout Arkansas and the Delta to provide preventive health services free of cost.

WWW.DELTA-PHI.ORG
DELTAPHI@NYIT.EDU

YOUR DPHI COMMUNITY TEAM



Brookshield Laurent, DO

Founding Executive Director



Tiffny Calloway

Director of Operations



**Rajendram Rajnarayanan,
PhD**

**Assistant Dean, Research
and Publications**



**Jenn Conner, DrPH, MPH,
MAP**

**Director of Research and
Grants**



Jacqueline Doss, MS, CHES

**Assistant Director for
Mobile Health Services**



Yoshara Barber, MPA

Regional Program Director



Lorenda Lockhart

Program Coordinator



Christine Hartford, MD

Medical Lead of Clinical Outreach



Whitney Holmes

Administrative Assistant

**NEW YORK INSTITUTE
OF TECHNOLOGY**

College of Osteopathic
Medicine
at Arkansas State University



**DELTA
POPULATION
HEALTH
INSTITUTE**

**For more information use the QR code above or
visit delta-phi.org**