



Basic Dance Beats

**"Punk" Blast Beats**

♩ = 250+

Musical notation for "Punk" Blast Beats. It consists of a single staff in common time (C) with a key signature of one sharp (F#). The notation shows four measures of music, each containing a half note followed by a quarter note. There are 'x' marks above the first and third notes of each measure, and 'x' marks below the bass line for the first and third notes of each measure.

**"Polka" Variant**

Musical notation for "Polka" Variant. It consists of a single staff in common time (C) with a key signature of one sharp (F#). The notation shows four measures of music. The first three measures each contain a half note followed by a quarter note. The fourth measure contains a half note followed by two eighth notes. There are 'x' marks above the first and third notes of each measure, and 'x' marks below the bass line for the first and third notes of each measure.

**Country "Train" Beat**

Brushes

Musical notation for Country "Train" Beat. It consists of a single staff in common time (C) with a key signature of one sharp (F#). The notation shows four measures of music. Each measure contains a half note followed by a quarter note, with a greater-than sign (>) above the half note. There are 'x' marks above the first and third notes of each measure, and 'x' marks below the bass line for the first and third notes of each measure.

**Country "Swing" Two Step**

Brushes

Musical notation for Country "Swing" Two Step. It consists of a single staff in common time (C) with a key signature of one sharp (F#). The notation shows four measures of music. Each measure contains a half note followed by a quarter note, with a greater-than sign (>) above the half note. There are 'x' marks above the first and third notes of each measure, and 'x' marks below the bass line for the first and third notes of each measure.

**Country "Swing" Shuffle** - Brushes optional

Musical notation for Country "Swing" Shuffle. It consists of a single staff in common time (C) with a key signature of one sharp (F#). The notation shows four measures of music. Each measure contains a half note followed by a quarter note, with a greater-than sign (>) above the half note. There are '3' above the half note and a '7' below the quarter note in each measure. There are 'x' marks above the first and third notes of each measure, and 'x' marks below the bass line for the first and third notes of each measure.

**12/8 Blues**

Musical notation for 12/8 Blues. It consists of a single staff in 12/8 time with a key signature of one sharp (F#). The notation shows four measures of music. Each measure contains a half note followed by a quarter note, with a greater-than sign (>) above the half note. There are 'x' marks above the first and third notes of each measure, and 'x' marks below the bass line for the first and third notes of each measure.

Basic Dance Beats

**Blues /Jazz Shuffle**

Musical notation for Blues/Jazz Shuffle. The staff is in 12/8 time, indicated by the time signature. The notation shows a sequence of eighth notes with beams, each marked with an 'x' above it, suggesting a specific drum pattern. There are four groups of eighth notes, each with an accent (>) above the first note. The notes are on the second line of the staff.

**Jazz Swing** (Bass drum is "feathered")

Musical notation for Jazz Swing. The staff is in 12/8 time. The notation shows a sequence of eighth notes with beams, each marked with an 'x' above it. There are four groups of eighth notes, each with an accent (>) above the first note. The notes are on the second line of the staff. The dynamic marking *mf* is written above the first note. Below the staff, the text "Bass = *pp*" is written.

**Jazz Waltz**

Musical notation for Jazz Waltz. The staff is in 3/4 time, indicated by the time signature. The notation shows a sequence of eighth notes with beams, each marked with an 'x' above it. There are four groups of eighth notes, each with an accent (>) above the first note. The notes are on the second line of the staff. A triplet of eighth notes is indicated by a '3' above the notes.

**Bossa Nova**

Musical notation for Bossa Nova. The staff is in common time (C), indicated by the time signature. The notation shows a sequence of eighth notes with beams, each marked with an 'x' above it. There are eight groups of eighth notes, each with an accent (>) above the first note. The notes are on the second line of the staff.

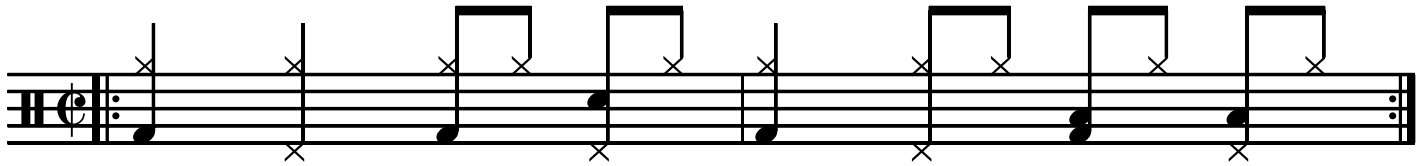
**Cha-Cha**

Musical notation for Cha-Cha. The staff is in common time (C), indicated by the time signature. The notation shows a sequence of eighth notes with beams, each marked with an 'x' above it. There are eight groups of eighth notes. The notes are on the second line of the staff.

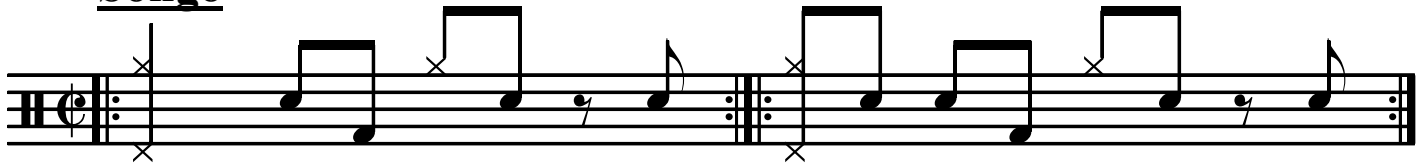
**Montuno**

Musical notation for Montuno. The staff is in common time (C), indicated by the time signature. The notation shows a sequence of eighth notes with beams, each marked with an 'x' above it. There are eight groups of eighth notes. The notes are on the second line of the staff.

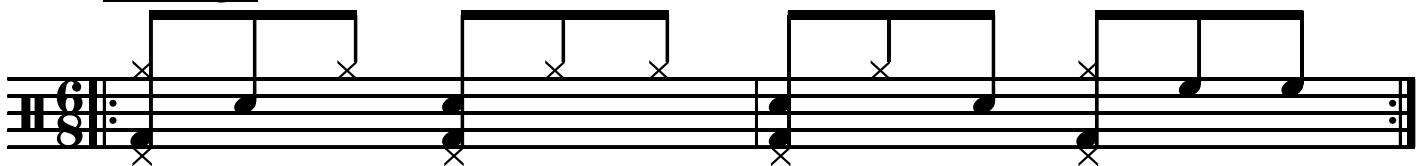
**Mambo**



**Songo**



**Nanego**



**Waltz**

28

Vienese Waltz

