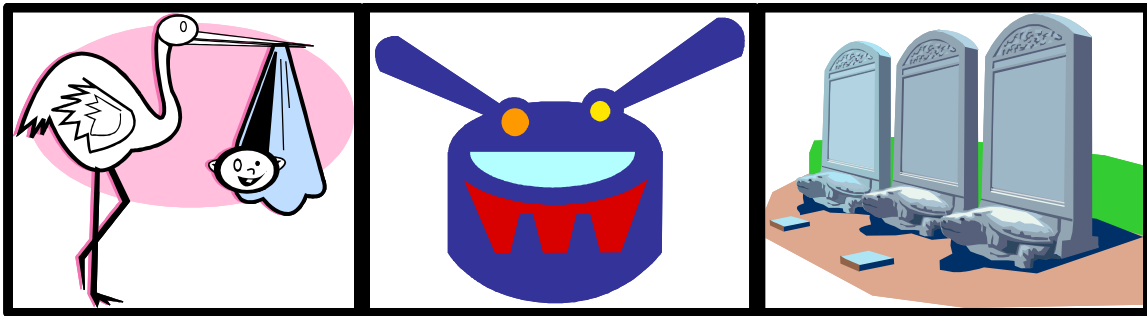


# JOHN LESTER'S LITTLE BOOK OF SNARE DRUM RUDIMENTS FOR THE BEGINNER TO INTERMEDIATE MUSICIAN

---



RUDIMENT	PAGE
Single Stroke Roll	1
Double Stroke Roll	2
Tripple Stroke Roll	3
Single Paradiddle	4
Five Stroke Double Roll	5
Flam	6
Flam Tap	7
Flam Accent	8
Double Paradiddle	9
Triple Paradiddle	10
Flamacue	11
Nine Stroke Double Roll	12
Drag	13
Seven Stroke Single Roll	14
Four Stroke Single Roll	15
Single Drag Tap	16
Paradiddle-diddle	17
Lesson Number 25	18
Single Dragadiddle	19
Six Stroke Roll	20
Seven Stroke Double Roll	21
Multiple Bounce "Buzz" Roll	22
Drag Paradiddle # 1	23
Flam Paradiddle	24
Swiss Army Triplet (Swiss Flam Accent)	25
Double Drag Tap	26
Eleven Stroke Double Roll	27
Drag Paradiddle # 2	28
Ten Stroke Double Roll	29
Thirteen Stroke Double Roll	30
Single Ratamacue	31
Single Flammed Mill	32
Double Ratamacue	33
Flam Drag	34
Triple Ratamacue	35
Fifteen Stroke Double Roll	36
Flam Paradiddle-diddle	37
Pataflafla	38
Seventeen Stroke Double Roll	39
Inverted Flam Tap	40

RUDIMENT	PAGE
Double Drag Tap	26
Double Paradiddle	9
Double Ratamacue	33
Double Styroke Roll	2
Drag	13
Drag Paradiddle # 1	23
Drag Paradiddle # 2	28
Eleven Stroke Double Roll	27
Fifteen Stroke Double Roll	36
Five Stroke Double Roll	5
Flam	6
Flam Accent	8
Flam Drag	34
Flam Paradiddle	24
Flam Paradiddle-diddle	37
Flam Tap	7
Flamacue	11
Four Stroke Single Roll	15
Inverted Flam Tap	40
Lesson Number 25	18
Multiple Bounce "Buzz" Roll	22
Nine Stroke Double Roll	12
Paradiddle-diddle	17
Pataflafla	38
Seven Stroke Double Roll	21
Seven Stroke Single Roll	14
Seventeen Stroke Double Roll	39
Single Drag Tap	16
Single Dragadiddle	19
Single Flammed Mill	32
Single Paradiddle	4
Single Ratamacue	31
Single Stroke Roll	1
Six Stroke Roll	20
Swiss Army Triplet (Swiss Flam Accent)	25
Ten Stroke Double Roll	29
Thirteen Stroke Double Roll	30
Triple Paradiddle	10
Triple Ratamacue	35
Tripple Stroke Roll	3

# The Rudiments

## Drum Lessons Workbook

John Lester

### Single Stroke Roll

The image displays six staves of musical notation for a 'Single Stroke Roll' exercise in 4/4 time. Each staff begins with a double bar line and a 4/4 time signature. The notation consists of quarter notes on a single line, with 'R' and 'L' labels below them. The exercises progress from simple alternating strokes to more complex patterns involving triplets and sixteenth notes.

Staff 1: R L R L

Staff 2: R L R L R L R L

Staff 3: R L R L R L R L R L R L R L

Staff 4: R L R L R L R L R L R L R L R L R L

Staff 5: R L R L R L R L R L R L R L

Staff 6: R L R L R L R L R L R L R L R L

- 1 Start with both sticks up.
- 2 Each stroke returns to the up position.
- 3 The height of the stroke is determined by the speed.

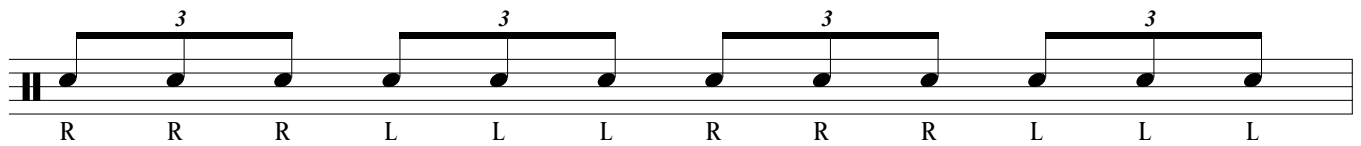
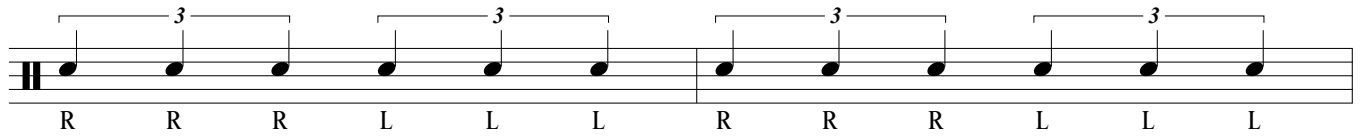
## Double Stroke Roll

The musical notation for the Double Stroke Roll consists of seven staves, each starting with a double bar line and a key signature of one flat (Bb). The notes are quarter notes, and the patterns are as follows:

- Staff 1:** Four quarter notes. The first two are marked 'R' and the last two are marked 'L'.
- Staff 2:** Eight quarter notes. The first four are marked 'R R L L' and the last four are marked 'R R L L'. There are horizontal lines above the first and fifth notes, indicating a double stroke.
- Staff 3:** Sixteen quarter notes. The first four are marked 'R R L L', the next four 'R R L L', the next four 'R R L L', and the last four 'R R L L'. There are horizontal lines above the first, fifth, ninth, and thirteenth notes, indicating a double stroke.
- Staff 4:** Sixteen quarter notes. The first four are marked 'R R L L', the next four 'R R L L', the next four 'R R L L', and the last four 'R R L L'. There are horizontal lines above the first, fifth, ninth, and thirteenth notes, indicating a double stroke.
- Staff 5:** Twelve quarter notes. The first three are marked 'R R L' and the last three 'L R R'. There are horizontal lines above the first and fifth notes, indicating a double stroke. A '3' is written above the first three notes, indicating a triplet.
- Staff 6:** Twelve quarter notes. The first three are marked 'R R L' and the last three 'L R R'. There are horizontal lines above the first and fifth notes, indicating a double stroke. A '3' is written above the first three notes, indicating a triplet.
- Staff 7:** Sixteen quarter notes. The first four are marked 'R R L L', the next four 'L L R R', the next four 'R R L L', and the last four 'L L R R'. There are horizontal lines above the first, fifth, ninth, and thirteenth notes, indicating a double stroke. A '3' is written above the first three notes of each of the four groups, indicating a triplet.

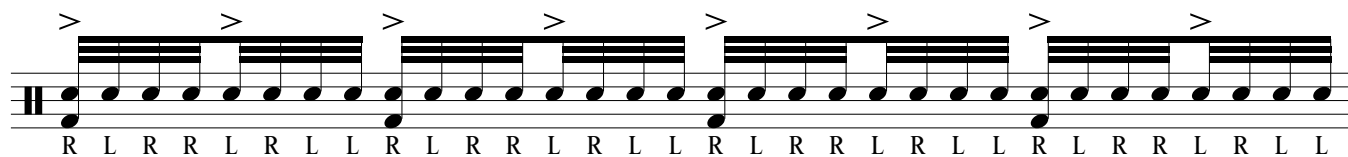
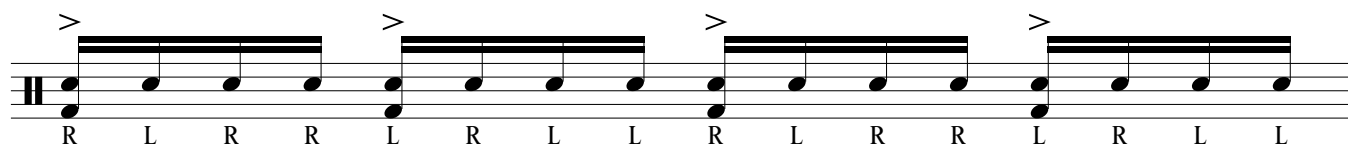
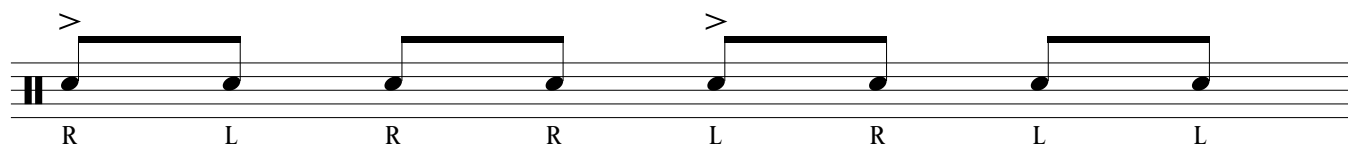
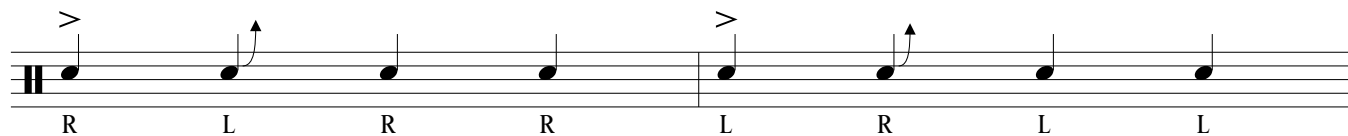
- 1 Start with both sticks up.
- 2 Each stroke returns to the up position.
- 3 The height of the stroke is determined by the speed

## Triple Stroke Roll



- 1 Start with both sticks up.
- 2 Each stroke returns to the up position.
- 3 The height of the stroke is determined by the speed

## Single Paradiddle



- 1 Start with Right stick up, Left down.
- 2 The first stroke is a "control" stroke (stays down after striking)
- 3 The second stroke is an "up" stroke (goes up after striking)
- 4 The third and fourth strokes stay down after striking.

The mnemonic is "1 down, 2 and up, 3, 4."

5 Stroke Double Roll

The musical notation for '5 Stroke Double Roll' is as follows:

- Staff 1 (3/4 time):**
  - Measure 1: R R L L R (with accent on R)
  - Measure 2: L L R R L (with accent on L)
- Staff 2 (4/4 time):**
  - Measure 1: R R L L R (with accent on R), followed by a rest.
  - Measure 2: L L R L R (with accent on R), followed by a rest.
- Staff 3 (4/4 time):**
  - Measure 1: R R L L R (with accent on R)
  - Measure 2: L L R R L (with accent on R)
  - Measure 3: R R L L R (with accent on R)
  - Measure 4: L L R R L (with accent on R)
- Staff 4 (4/4 time):**
  - Measure 1: R L L R R L (with accent on R)
  - Measure 2: R R L L R (with accent on R)
  - Measure 3: L L R R L (with accent on R)
  - Measure 4: R R L L (with accent on R)

- 1 Start with both sticks up.
- 2 Each stroke returns to the up position.
- 3 The height of the stroke is determined by the speed



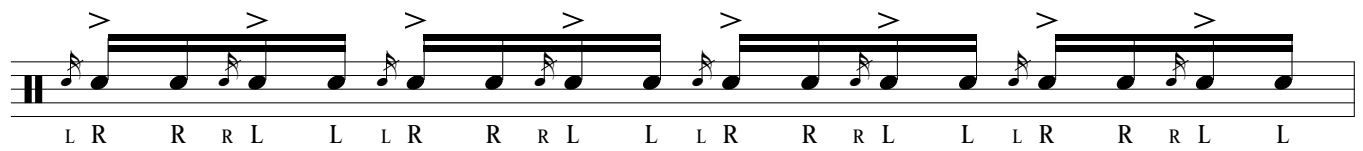
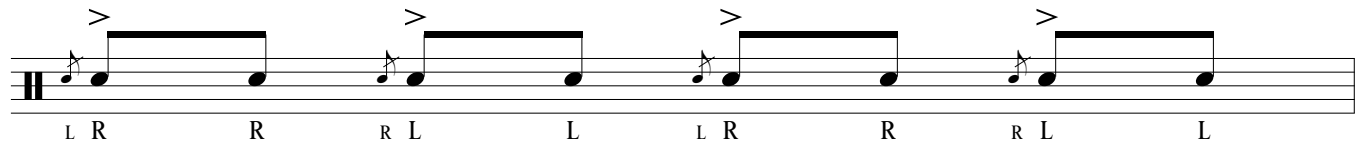
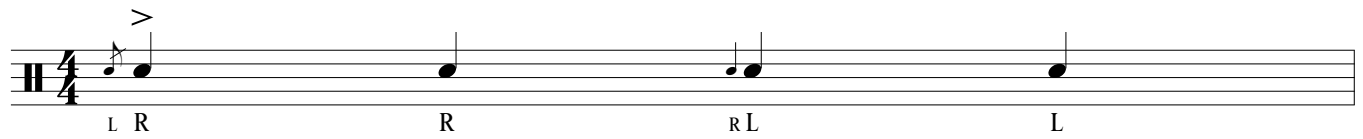
## Flam



- 1 Start with grace note 1-2 inches above surface, main note up.
- 2 After striking a light grace note tap the stick goes up.
- 3 The "up" stick moves down simultaneously with the grace note stroke.

This rudiment, when executed correctly sounds exactly like its name.

## Flam Tap



- 1 Start with L stick 1-2 inches above surface, Right stick up
- 2 Strike a Right Flam. leaving Right stick down, Left up
- 3 Strike a light Right tap, leaving stick 1-2 inches above surface.

## Flam Accent

L R L R R L R L L R L R R L R L

L R L R R L R L L R L R R L R L

L R L R R L R L L R L R R L R L L R L R R L R L

- 1 Start with Left stick 1-2 inches above surface, Right stick up.
- 2 Execute a Right flam, leaving both sticks down.
- 3 Strike a light Left "up" stroke.
- 4 Strike a light Right down stroke, leaving the stick 1-2 in above surface.

## Double Paradiddle

6/4

R L R L R R L R L R L L

8/8

R L R L R R L R L R L L

2/4

R L R L R R L R L R L L R L R L R R L R L R L L

- 1 Start with Right stick up, Left down
- 2 Strike an accented Right "down" stroke.
- 3 The second and 3rd strokes stay down.
- 4 The 4th stroke is an "up" stroke.
- 5 The 5th and 6th strokes stay down.

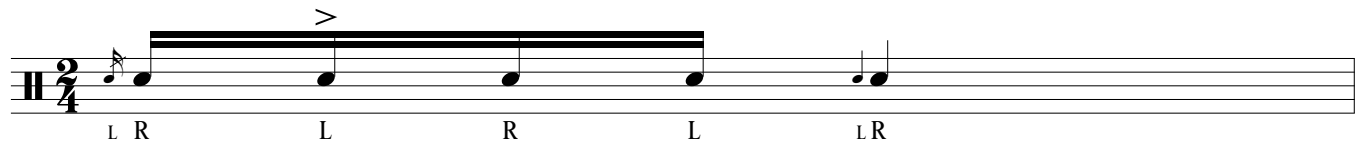
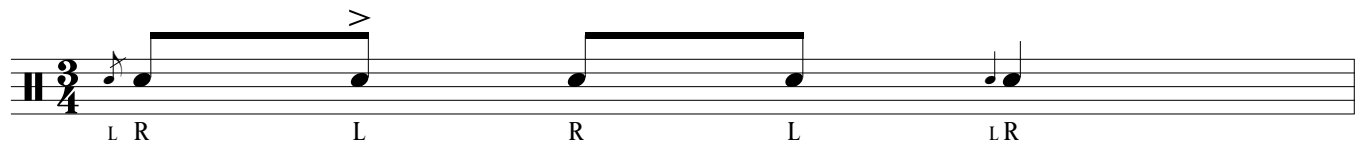
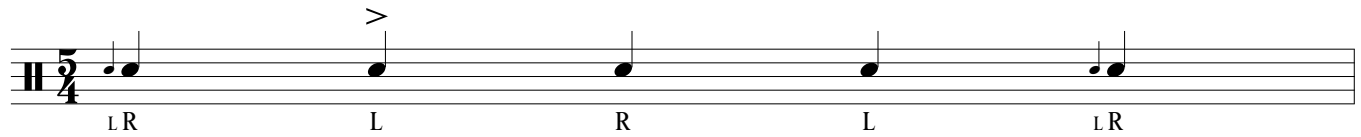
## Triple Paradiddle

R L R L R L R R L R L R L R L L

R L R L R L R R L R L R L R L L

- 1 Start with Right stick up, Left down
- 2 Strike an accented Right "down" stroke.
- 3 The 2nd, 3rd, 4th and 5th strokes stay down.
- 4 The 6th stroke is an "up" stroke.
- 5 The 7th and 8th strokes stay down.

## Flamacue



- 1 Start with Right stuck up, Left 1-2 inches from surface.
- 2 Strike a light Right flam bringing Left up and leaving Right stick down.
- 3 Strike a Left accent leaving the Left stick down.
- 4 Strike a light Right "Up" stroke. (bring Right stick up).
- 5 Strike a light Right flam bringing Left up and leaving Right stick down.

## Nine Stroke Roll

R R L L R R L L R L L R R L L R R L

R R L L R R L L R L L R R L L R R L

- 1 Start with both sticks in the up position.
- 2 Strike full strokes, returning each stroke to the up position.

## Fives and Nines Exercise

R R L L R L L R R L R R L L R R L L R R L

The Drag (ruff)

LLR RRL LLR RRL

This musical notation shows four measures on a single staff. Each measure contains a pair of eighth notes. The first measure is labeled 'LLR', the second 'RRL', the third 'LLR', and the fourth 'RRL'. The notes are beamed together, and there are repeat signs at the beginning and end of the staff.

LLR RRL LLR RRL LLR RRL LLR RRL

This musical notation shows eight measures on a single staff. The first two measures are labeled 'LLR' and 'RRL', the next two are 'LLR' and 'RRL', and the final two are 'LLR' and 'RRL'. Each measure contains a pair of eighth notes, with a horizontal bar above the notes in each measure. There are repeat signs at the beginning and end of the staff.

- 1 Start with Left stick down, Right stick up.
- 2 strike two light grace note left taps going up after second left.
- 3 strike one Right accented stroke staying down.
- 4 Reverse

R R B R L L R R B R

This musical notation shows four measures on a single staff. The first measure has two eighth notes labeled 'R' and 'R'. The second measure has a bass drum symbol 'B' followed by two eighth notes labeled 'R' and 'L', with a grace note symbol '>' above the first 'R'. The third measure has two eighth notes labeled 'R' and 'R'. The fourth measure has a bass drum symbol 'B' followed by an eighth note labeled 'R', with a grace note symbol '>' above the 'B'. There are repeat signs at the beginning and end of the staff.



## Seven Stroke Single Roll

The first two measures of the exercise are shown on a single staff. The first measure contains two triplets of eighth notes: the first triplet starts with a right-hand stroke (R) and the second with a left-hand stroke (L). The final eighth note of the first measure is a right-hand stroke (R) with an accent (>). The second measure contains two triplets of eighth notes: the first triplet starts with a left-hand stroke (L) and the second with a right-hand stroke (R). The final eighth note of the second measure is a left-hand stroke (L) with an accent (>). The notes are on a single line, and the staff begins with a treble clef and a key signature of one flat.

The last two measures of the exercise are shown on a single staff. The third measure contains two triplets of eighth notes: the first triplet starts with a right-hand stroke (R) and the second with a left-hand stroke (L). The final eighth note of the third measure is a right-hand stroke (R) with an accent (>). The fourth measure contains two triplets of eighth notes: the first triplet starts with a left-hand stroke (L) and the second with a right-hand stroke (R). The final eighth note of the fourth measure is a left-hand stroke (L) with an accent (>). The notes are on a single line, and the staff begins with a treble clef and a key signature of one flat.

- 1 Start with both sticks up
- 2 Each stroke returns to the up position, a full stroke.

## Four Stroke Single Roll

R L R L  
 L R L R

R L R L  
 L R L R

R L R L  
 L R L R

R L R L  
 L R L R

R L R L  
 L R L R

R L R L  
 L R L R

- 1 Start with both sticks up
- 2 Each stroke returns to the up position, a full stroke.

## Single Drag Tap

LLR                      L                      RRL                      R

LLR L      RRL R      LLR L      RRL R

R L L R      L R R L      R L L R      L R R L

- 1 Start with both sticks down
- 2 Two light Left taps going up after 2nd tap
- 3 Light Right tap, staying down.
- 4 Left accent stays down.
- 5 Reverse

Paradiddle-diddle

Down D D Up D D

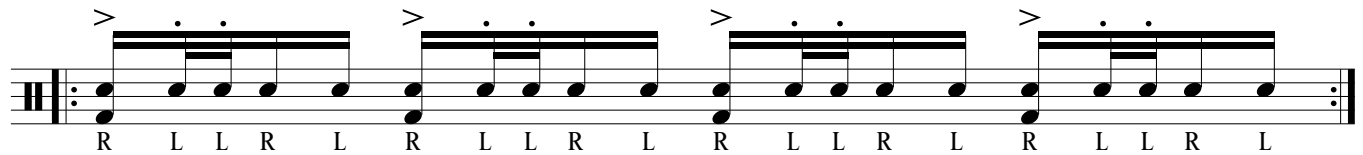
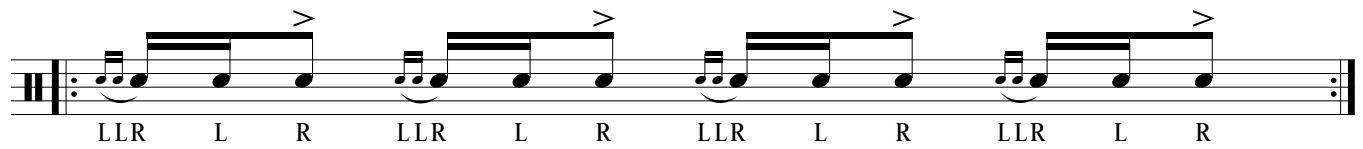
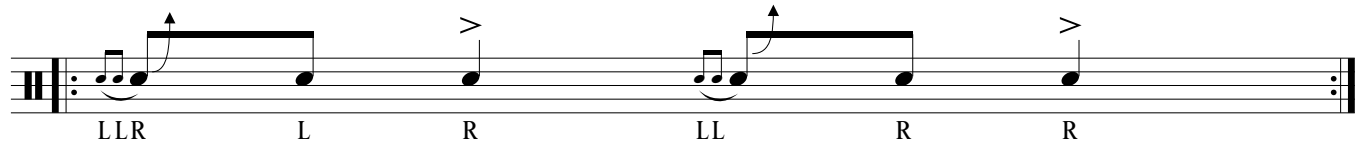
R L L R L R L R L R L R

> 3 3 > 3 3 > 3 3 > 3 3

R L R R L L R L R R L L R L R R L L R L R R L L R L R R L L R R

- 1 Start with Right stick up, Left stick down
- 2 Keep sticks down until 2nd Right goes up.
- 3 Double lefts stay down.

## Lesson # 25



- 1 Start with both sticks down
- 2 Strike two light Left taps, leaving sticks down.
- 3 Strike one light Right tap, going up.
- 4 Strike one light left tap, leaving stick down
- 5 Strike one Right accent, staying down (Control Stroke)

Single Dragadiddle

R R L R R R R L R R

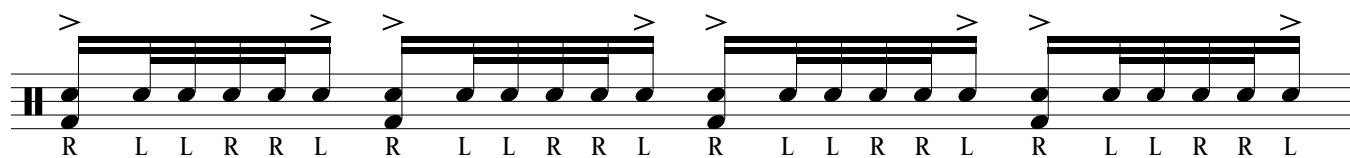
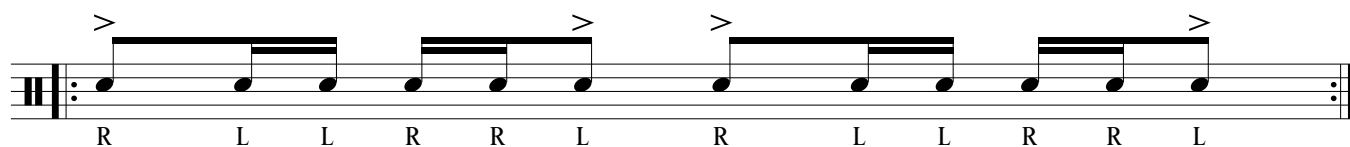
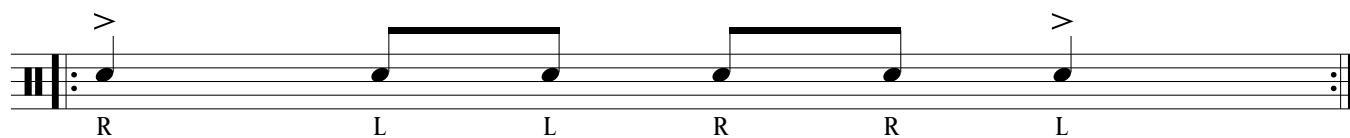
L L R L L L L L R L L

R R L R R R R L R R R R R L R R R R R L R R

L L R L L L L L R L L L L L R L L L L L R L L

- 1 Start with Right stick up, Left stick Down.
- 2 Strike two accented Right strokes, leaving stick Down.
- 3 Strike one light Left Tap, bringing stick Up.
- 4 Strike 2 light unaccented Right strokes, leaving sticks down

## The Six Stroke Roll



- 1 Start with both sticks up 10-12 inches above drum.
- 2 Strike full strokes, returning each stick to the up position.

## The Seven Stroke Double Roll

The first line of musical notation consists of four measures. Each measure contains a double roll of seven strokes. The first stroke of each measure is marked with an accent (>). The rhythmic pattern for each measure is R R L L R R L. The notes are quarter notes on a single staff.

R R L L R R L R R L L R R L R R L

The second line of musical notation consists of four measures. Each measure contains a double roll of seven strokes. The first stroke of each measure is marked with an accent (>). The rhythmic pattern for each measure is R R L L R R L. The notes are quarter notes on a single staff.

R R L L R R L R R L L R R L R R L L R R L R R L

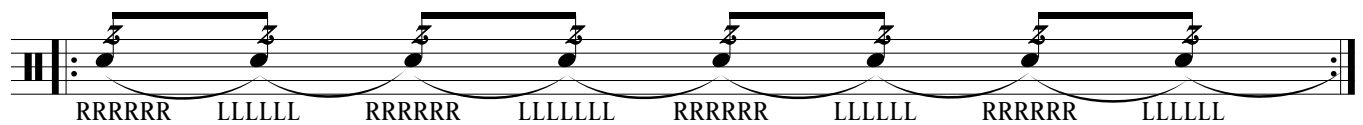
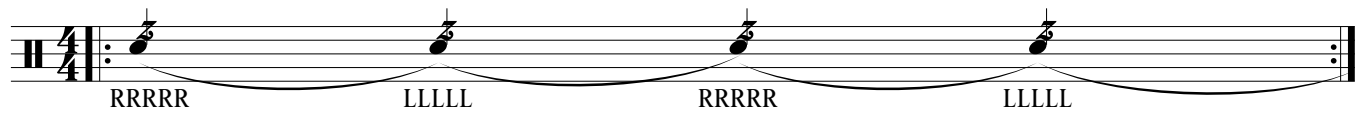
The third line of musical notation consists of four measures. Each measure contains a double roll of seven strokes. The first stroke of each measure is marked with an accent (>). The rhythmic pattern for each measure is R L L R R L L R. The notes are quarter notes on a single staff.

R L L R R L L R L L R R L L R L L R R L L R L L R R L L

- 1 Start with both sticks up 10-12 inches above drum.
- 2 Strike full strokes, returning each stick to the up position.



## Multiple Bounce "Buzz" Roll



- 1 Start with both sticks close to the drum surface
- 2 Lightly holding the "fulcrum" between thumb and 1st finger strike the drum letting the stick bounce rapidly 6-8 times. Allow the stick to bounce freely and rapidly until the next note.
- 3 There are no accents.

## Drag Paradiddle Number 1

R LLR L R R L RL R L L

R LLR L R R L RRL R L L

- 1 Start with the Right stick up, Left stick down.
  - 2 Strike one Right accented control stroke, leaving the stick down.
  - 3 Strike 2 grace note strokes on the Left, leaving the stick down.
  - 4 Strike a Right tap leaving the stick down
  - 5 Strike a Left tap bringing the stick up.
  - 6 Strike 2 right taps, leaving the stick down.
- REVERSE

## Flam Paradiddle

L R L R R R L R L L

L R L R R R L R L R L R R R L R L L L

- 1 Start with Right stick up, Left stick Down.
  - 2 Strike an accented Right Flam, leaving both sticks Down.
  - 3 Strike a left tap, bringing the Left stick Up.
  - 4 Strike 2 Right taps. leaving the stick down.
- REVERSE

Swiss Flam Accent  
(Swiss Army Triplet)

L R R L L R R L

R L L R R L L R

L R R L L R R L L R R L

R L L R R L L R R L L R R L

- 1 Start with Left Down, Right Up.
  - 2 Strike a Right accented Flam leaving both sticks Down
  - 3 Strike a Right tap, bringing the stick Up.
  - 4 Strike a Left Tap, leaving the stick down.
- Does not reverse. Practice both Right and Left stickings.

## Double Drag Tap

LLR LLR L RRL RRL R

LLR LLR L RRL RRL R

- 1 Start with both sticks Low
  - 2 Strike two light Left Taps, stick stays Down
  - 3 Strike one light Right tap, sticks stays Down
  - 4 Strike two light Left taps, Left stick going Up.
  - 5 Strike one light Right tap, stick stays down
  - 6 Strike one Accented Left tap, Left stays Down
- REVERSE

## Eleven Stroke Double Roll

The first staff of music is in 2/4 time, indicated by a treble clef and a 2/4 time signature. It contains eleven eighth notes. The first eight notes are grouped into two sets of four, each with a thick horizontal line above them. The last three notes are also grouped with a thick horizontal line above them. The final note is a dotted eighth note with an accent (>) above it. Below the staff, the letters R, R, L, L, R, R, L, L, R, R, L are aligned under each note.

The second staff of music is in 2/4 time, indicated by a treble clef and a 2/4 time signature. It contains eleven eighth notes. The first eight notes are grouped into two sets of four, each with a thick horizontal line above them. The last three notes are also grouped with a thick horizontal line above them. The final note is a dotted eighth note with an accent (>) above it. Below the staff, the letters L, L, R, R, L, L, R, R, L, L, R are aligned under each note.

- 1 Start with both sticks Up
- 2 Strike Consecutive Full strokes.

## Drag Paradiddle Number 2

R LLR LLR L R R L RRL RRL R L L

R LLR LLR L R R L RRL RRL R L L

- 1 Start with Left stick Down, Right stick up.
  - 2 Strike one Accented Right Stroke, leaving stick Down.
  - 3 Strike two light Left Taps, leaving stick Down.
  - 4 Strike one light Right tap, leaving stick Down.
  - 5 Strike two light Left Taps, leaving stick Down.
  - 6 Strike one light Right tap, leaving stick Down.
  - 7 Strike one light Left tap, bringing stick Up.
  - 8 Strike two light Right taps, leaving stick Down.
- REVERSE

The Ten Stroke Roll

R R L L R R L L R L

1 3 E AN > >  
R R L L R R L L R L R R L L R R L L R L

- 1 Start with both sticks UP
- 2 Play full strokes, returning each stick to the Up position following each stroke.



## The Thirteen Stroke Double Roll

R R L L R R L L R      L L R R L L R R L L R R L

R R L L R R L L R R L L R      L L R R L L R R L L R R L

- 1 Start with both sticks UP
- 2 Play full strokes, returning each stick to the Up position following each stroke.

The Single Ratamacue

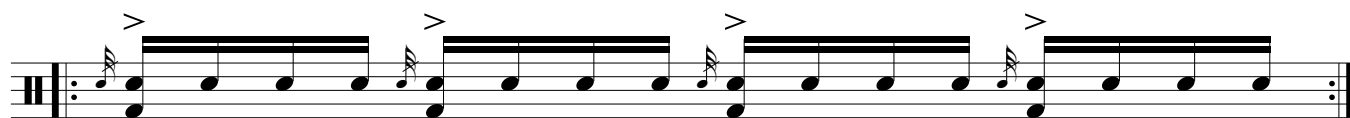
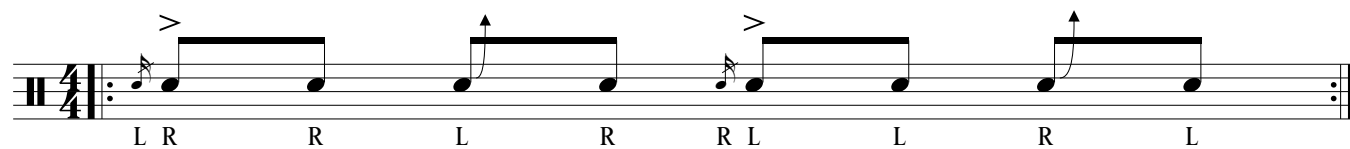
LLR L R L RRL R L R

LLR L R L RRL R L R

R LLR L R L RRL R L

- 1 Start with Both sticks Down.
  - 2 Strike 2 light Left taps, leaving stick Down.
  - 3 Strike 1 light Right tap, leaving stick Down.
  - 4 Strike 1 light Left tap. bringing stick Up.
  - 5 Strike 1 light Right tap, leaving stick Down.
  - 6 Strike 1 accented Left stroke, leaving stick Down.
- REVERSE

## Single Flammed Mill



- 1 Start with Right stick Up, Left down
  - 2 Execute a Right flam, leaving both sticks Down.
  - 3 Strike one light Right tap, leaving sticke Down
  - 4 Strike one light Left tap, bringing stick UP.
  - 5 Strike one light Right tap, leaving stick Down.
- REVERSE

## Double Ratamacue

LLR LLR L R L RRL RRL R L R

LLR LLR L R L RRL RRL R L R

- 1 Start with Both sticks Low
  - 2 Strike two light Left taps, leaving stick Down.
  - 3 Strike one light Right tap, leaving stick Down.
  - 4 Strike 1 light Right tap, leaving stick Down.
  - 5 Strike 1 light Left tap. bringing stick Up.
  - 6 Strike 1 light Righe tap, leaving stick Down.
  - 7 Strike 1 accented Left stroke, leaving stick Down.
- REVERSE

## Flam Drag

3/4

L R            L    L    R            R L            R    R    L

6/8

- 1 Start with Left stick Down, Right stick Up.
  - 2 Execute a Right Flam leaving both sticks Down.
  - 3 Strike two light Left taps, stick going Up after 2nd Left tap.
  - 4 Strike 1 light Left Tap, leaving stick Down.
- REVERSE

## Triple Ratamacue

LLR LLR LLR L R L RRL RRL RRL R L R

LLR LLR LLR L R L RRL RRL RRL R L R

- 1 Start with Both sticks Low
  - 2 Strike two light Left taps, leaving stick Down.
  - 3 Strike one light Right tap, leaving stick Down.
  - 4 Strike two light Left taps, leaving stick Down.
  - 5 Strike one light Right tap, leaving stick Down.
  - 6 Strike 1 light Right tap, leaving stick Down.
  - 7 Strike 1 light Left tap. bringing stick Up.
  - 8 Strike 1 light Righe tap, leaving stick Down.
  - 9 Strike 1 accented Left stroke, leaving stick Down.
- REVERSE

## Fifteen Stroke Roll

The exercise consists of four staves of music, each with a rhythmic pattern and stick indicators (R for Right, L for Left) below the notes. The first two staves are in 4/4 time, and the last two are in 2/4 time. The patterns are as follows:

Staff 1 (4/4): R R L L R R L L R R L L R R L

Staff 2 (4/4): L L R R L L R R L L R R L L R

Staff 3 (2/4): R R L L R R L L R R L L R R L

Staff 4 (2/4): L L R R L L R R L L R R L L R

Each staff begins with a double bar line and a repeat sign. The first two staves have a 4/4 time signature, and the last two have a 2/4 time signature. The notes are quarter notes, and the patterns are repeated four times. The final note of each pattern is marked with an accent (>).

- 1 Start with both sticks Up.
- 2 Play full strokes, returning each stick to the Up position after striking.

## Flam Paradiddle-diddle

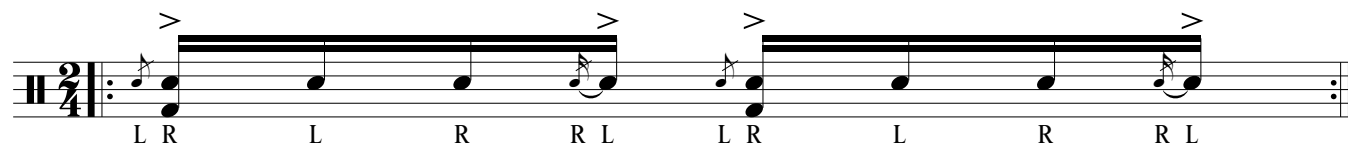
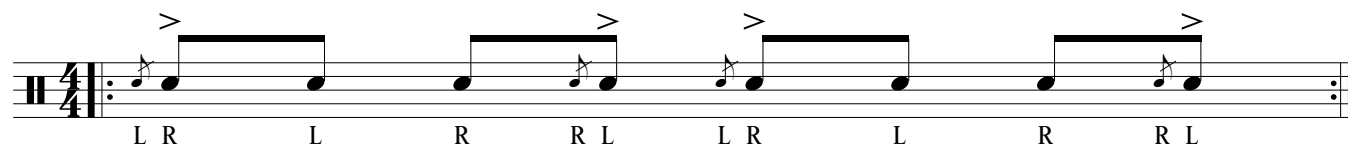
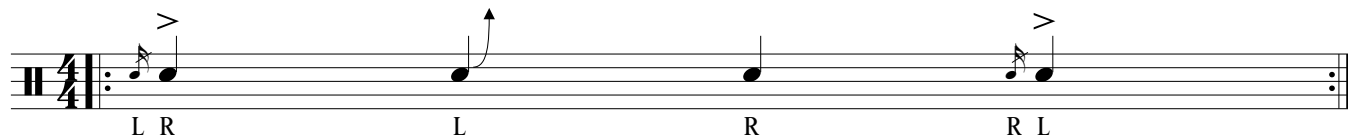
L R L R R L L R L R L L R R

3 3 3 3

- 1 Start with Left stick Down., Right stick Up.
  - 2 Execute a Right Flam, leaving both sticks Down.
  - 3 Strike a light Left tap,leaving stick Down
  - 4 Strike a light Right tap, leaving stick Down
  - 5 Strike a light Right tap, leaving stick Down
  - 6 Strike a light Left tap,leaving stick Down
  - 7 Strike a light Left tap, bringing stickc Up.
- REVERSE



## Pataflafla



- 1 Start with left stick Down, Right Up
- 2 Execute a Right Flam , leaving Both sticks Down
- 3 Strike a light Left tap, bringing stick Up
- 4 Strike a Light Right tap, leaving stick Down
- 5 Execute an accented Left flam, Bringing Right stick up, leaving Left stick Down.

## Seventeen Stroke Roll

R R L L R R L L R R L L R R L L R      L L R R L L R R L L R R L L R R L

- 1 Start with both sticks Up.
- 2 Play full strokes, returning each stick to the Up position after striking.

## Inverted Flam Tap

L R L R L R R L R L R L R L R

L R L R L R R L R L R L R L R

- 1 Start with Left stick Down, Right stick Up.
- 2 Execute an accented Right Flam, leaving bothh sticks Down.
- 3 Strike a light Left tap, Bringing the Left stick Up.
- 4 Execute an accented Left Flam, leaving bothe sticks Down
- 5 Strike a light Right tap, bringing the Right stick Up