

# BATTERY ENERGY STORAGE SYSTEMS (BESS)

And The Battle for Safety in our Community

7/25/2023 &  
updates 11/5/2023  
Taryn Pfeifer

# GOAL: TO EDUCATE OUR COMMUNITY ABOUT THE SITUATION AND RISKS



## WHAT

What is a BESS and what is being proposed near our homes?  
What are the dangers?



## WHO/ WHY

Who is building this and why in this location?  
Who benefits?



## WHEN

Discuss the timeline of the permit/ application to date and what is predicted to come.



## ACTION?!

What can YOU do to oppose in ways that impact King County leaders?  
How can you add your voice?

An aerial photograph of a large construction site. The site is filled with numerous rectangular concrete blocks, organized into many neat rows. A yellow rectangular box is superimposed over the center of the image, containing the text 'HOW WE FOUND OUT ABOUT THE PERMIT'. In the background, there is a green field with a red running track and a baseball field. To the left, there are some trees and a parking lot with several cars. The overall scene is a busy construction site in a suburban or rural setting.

**HOW WE  
FOUND OUT  
ABOUT THE  
PERMIT**

## NEIGHBOR DIGS INTO RESEARCH



### CORE SAMPLES?

James Delay & his wife Desiree saw core samples being drilled next to their home in Dec 2022. He was curious what they were looking for...

### THE STORY DEEPENS

Found CDUP23-0003 permit application for **14 acres** of battery storage units (lithium) – called Kingfisher Energy Project (**200 MW** of battery storage!!)

### OWNER OF LAND IS 83 & CHILDREN WISH TO SELL (NONE LOCAL)

The current plans are to build asap around her home until she dies, then they can level the house.

### DANGERS & SCALE SHOCKING!

His research soon showed:

- Little regulations exist around this new tech
- There ARE dangers & catastrophic side effects
- The size is MASSIVE on the world scale
- No one even KNEW about this!



### FACEBOOK PAGE FORMED 3/2023

His Facebook page is a database for research/info; articles of fires from around the world, King County info, upcoming meetings, & community engagement

An aerial photograph of a school campus. In the center is a large, multi-tiered stadium with grey seating. To the right of the stadium is a red running track and a green baseball field. In the background, there are several school buildings and a parking lot. The foreground shows a grassy field and a road. A semi-transparent green box is overlaid on the stadium area, containing the text "WHAT IS A BESS?".

**WHAT IS A  
BESS?**

# WHAT IS A BESS?

- A type of battery-based energy storage system that can be used to store excess energy from renewable sources.
- Energy comes from solar, wind, hydro, etc.
- This stored energy can then be drawn upon when needed to meet various demands for power



Pacific Northwest NATIONAL LABORATORY

## Types of Energy Storage



Hydro



Mechanical

& Gravity



Thermal



Electrochemical  
(Lithium-ion)

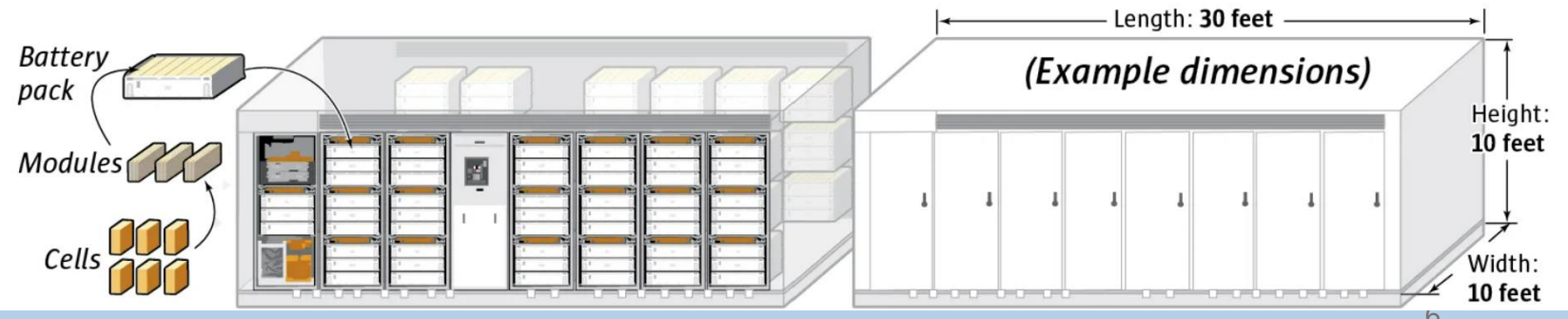
## LITHIUM-ION VS LFP

- Lithium ion is most unstable
- Lithium Iron Phosphate (LFP) is considered “less fire prone” but explosions are far more damaging! (less data as well)
  - BESS builders switched to LFP in 2021 (Tesla, etc)
- Both have lifespan (10-20 yrs) and maintenance issues

### Battery energy storage system

Battery packs with multiple modules made up of individual power cells are stacked in banks or racks inside a high-voltage battery energy container.

Multiple energy containers are lined up in rows, to make a storage complex that can be connected to the electrical grid through a nearby substation.



## ARE ANY IN WASHINGTON STATE?

- Most in the US are packed into states with high demand for energy w/o enough production: California, Texas, Florida, Arizona, New York.
- **Washington has only 2 operating BESS sites** (test sites)
- Both are near Boeing (industrial zones) and **2MW** (*very small*)
- Many more (10+) industrial sized sites are being proposed in Washington RIGHT NOW with less thoughtful siting – LIKE OUR COVINGTON COMMUNITY!

## US & WORLDWIDE BESS SITING

**\* MANY ARE PLACED NEXT TO WIND/SOLAR FARMS**



**\* LARGER BESS SITES STARTED ONLY AROUND 5 YEARS AGO (2018)**

**\* ZONING STANDARDS DO NOT EXIST IN WASHINGTON STATE**

**\* “PACIFIC NORTHWEST NATL LAB” HAS BEEN GATHERING DATA AROUND STATE ORDINANCES/ CODES OTHER STATES ARE DRAFTING**

**\* THEY TRY TO BUILD NEAR SUBSTATIONS TO MAXIMIZE EFFICIENCY OF TRANSFER**



Nursling, Southampton (UK) 50MW BESS - unveiled 2021

An aerial photograph of a large stadium with numerous rows of grey seats. The stadium is situated on a grassy field. In the background, there is a green field with a red track and a baseball field. A large, multi-story building is visible in the upper right corner. The text "SIZE UNDERSTANDING" is overlaid in a large, bold, green font, enclosed in a green rectangular box.

**SIZE  
UNDERSTANDING**



## SIZE UNDERSTANDING

- Residential scale battery storage is in kilowatts, but utility-scale battery storage is in megawatts (1 megawatt = 1000 kilowatts)
- WA has only two, 2 MW sites currently, Tenaska proposes **200+** MW to be behind Mattson Middle School!
- Largest in the world is Moss Landing, CA – 400MW

### EXAMPLE OF 1 “CABINET” (2MW)

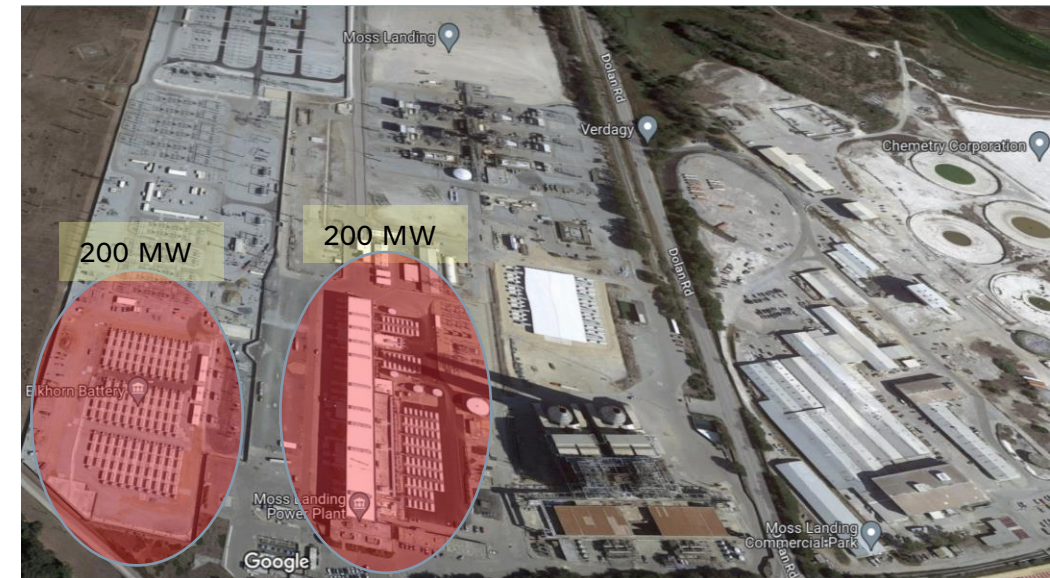


### EXAMPLE OF 11 ENCLOSURES (20MW)

(shipping container sized)



### MOSS LANDING, CA (400MW)



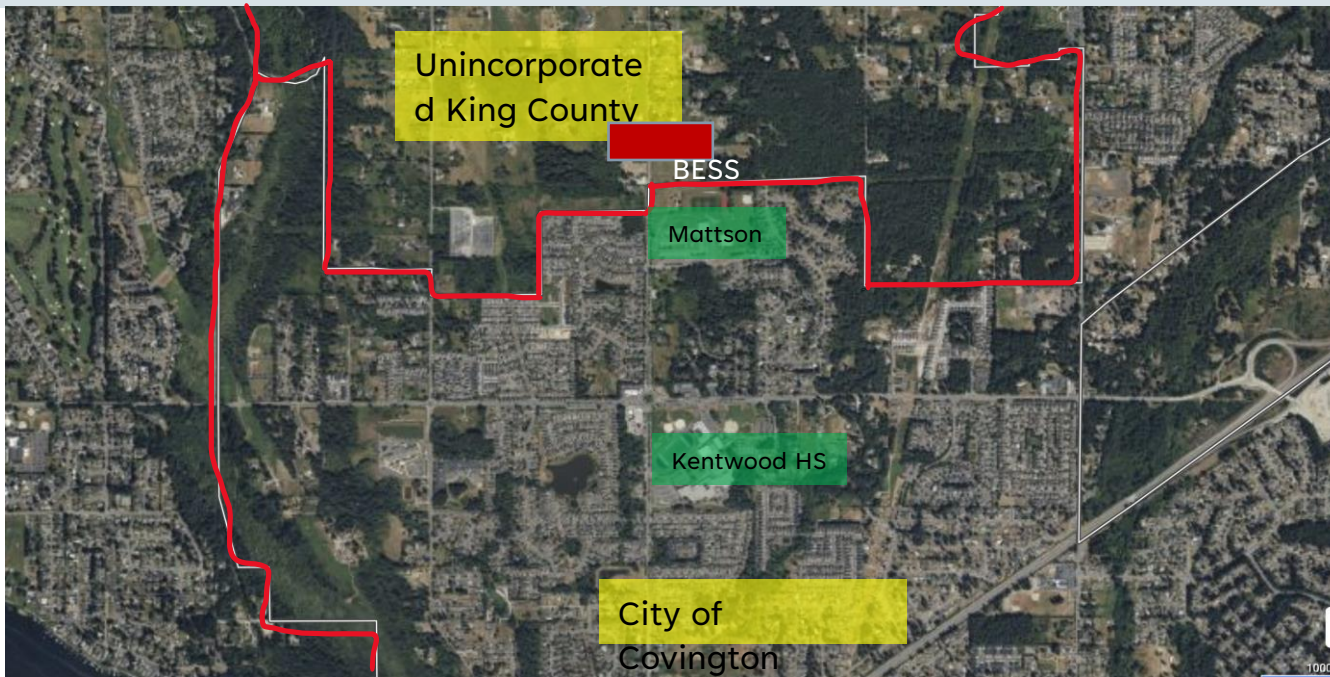
An aerial rendering of a residential development. The scene shows a large, organized housing complex with numerous rectangular units arranged in neat rows. In the background, there is a school building, a baseball field, and a running track. The area is surrounded by greenery and trees. A yellow text box is overlaid on the center of the image.

**“TENASKA” SITE RIGHT  
NEXT TO COVINGTON  
SCHOOL & HOMES**



# KINGFISHER BATTERY ENERGY STORAGE PROJECT

“Clever” Site Choice to Minimize Public Awareness  
& Rush Permit Approval Without Opposition



**\*\* Tenaska has been working on this permit “over a year”**

- Whatcom County voted in 2022 to limit BESS sites more than 5 MW to industrial zones and rural sites near substations
- Tenaska tried to build 9 acre site in Renton in 2022
  - In April 2022 the Renton City Council placed 6-month moratorium on battery storage proposals while they determine how to be “safe”
- **No restrictions currently in King County!**
  - Unincorporated King County has no City Council representative to speak up for the residents (& Covington has no jurisdiction to regulate this site)
  - Tenaska hoped for less awareness when it mattered; **TOO LATE** to speak up once permitted (as proven in Grand Terrace, CA – rare industrial zoned site next to a school that never knew until it was built)

An aerial photograph of a large stadium with a green field and bleachers. The stadium is surrounded by trees and a parking lot. In the background, there is a baseball field and a building. The text "DANGERS & IMPACTS" is overlaid in a yellow box in the center of the image.

# DANGERS & IMPACTS

# BATTERY FIRES/EXPLOSIONS

- These fires can't be extinguished with chemicals or water – they must “burn out” while firefighters in Hazmat suits monitor.
- In the past they have been caused by extreme heat, lightning strikes, or malfunctions.
- Surprise, AZ fire in 2020 burned for 11 days & residents for miles around were forced to evacuate...

Pacific Northwest NATIONAL LABORATORY

## Failure Modes/Hazards

Thermal Abuse    Electrical Abuse

Mechanical Abuse

Environmental Impacts    Internal Faults

Thermal Runaway  
↓  
Flammable Gases  
↓  
Stranded Energy



**NOT “IF”, BUT “WHEN” A BATTERY FIRE/EXPLOSION OCCURS!**

Pacific Northwest NATIONAL LABORATORY

## Reducing Explosion Risks is Key Gap

An energy storage system fire and explosion at a solar power facility in Hongseong, South Chungcheong Province, on April 6.

Credit: Business Korea.

Pacific Northwest NATIONAL LABORATORY

### No Warning Prior to Explosion

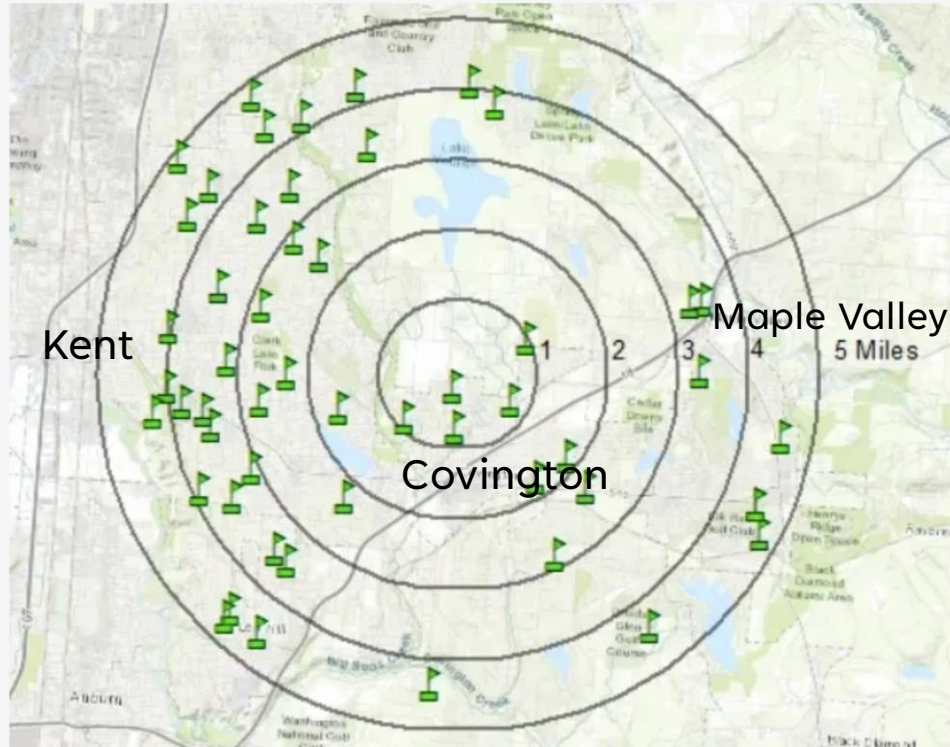
- Extension of fire contained to single enclosure.
- Firefighting operations focused on exposure protect
- Merseyside Fire Dept responding agency
- Fire cause investigation ongoing



slides taken from Nov 2022 Workshop by Washington State Dept of Commerce re BESS siting and safety – Matthew Paiss (PNNL technical fire advisor) slides

# FIRES LEAD TO DEADLY TOXIC SMOKE & IMMEDIATE EVACUATIONS

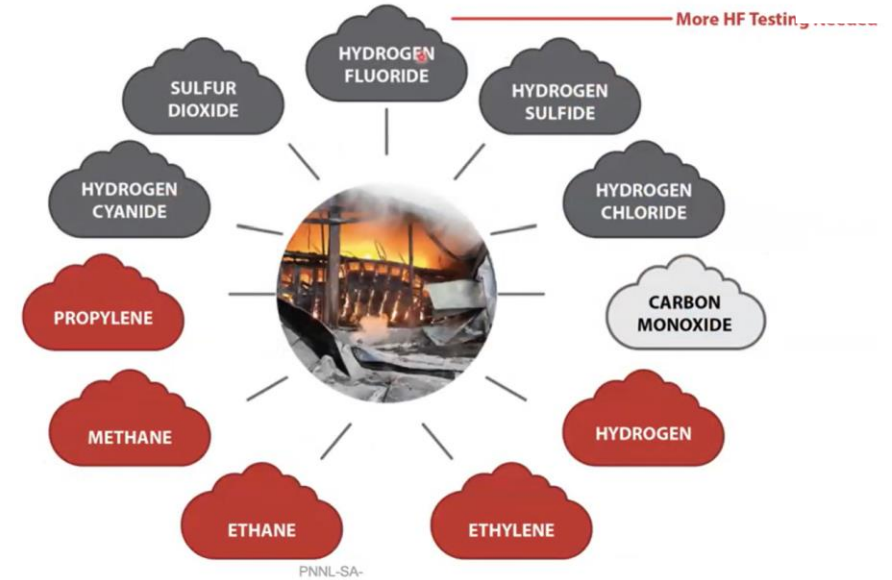
## THE 5 MILE TOXIC PLUME RADIUS



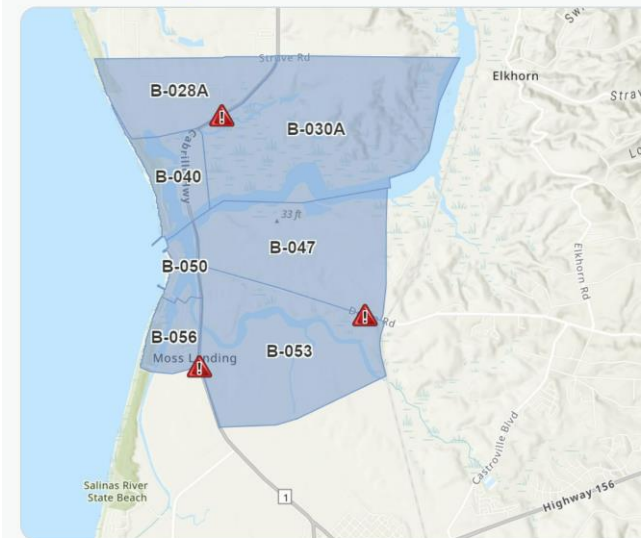
## 50+ SCHOOLS WILL BE AFFECTED BY THE TOXIC PLUME

Based on previous fires at these facilities, the toxic plume may reach a 5-mile radius requiring evacuation of schools, residents and businesses.

## Hazards – Flammable/Toxic Gases



#MossLandingIncident



\* 1 of the many Moss Landing fires which resulted in freeway shutdown and shelter-in-place d/t toxic fumes!

# BESS FIRES IN THE NEWS (A VERY SMALL SAMPLING)

## Report: Four Firefighters Injured In Lithium-Ion Battery Energy Storage System Explosion - Arizona

July 29, 2020

**FSRI releases new report investigating near-miss lithium-ion battery energy storage system explosion.**

Funded by the U.S. Department of Homeland Security (DHS) and Federal Emergency Management Agency (FEMA) Assistance to Firefighters Grant Program, *Four Firefighters Injured In Lithium-Ion Battery Energy Storage System Explosion - Arizona* is the first report issued as part of the Study of

## Morris fire: Lithium batteries a concern as blaze burns for 2nd day, evacuation order extended

Evacuation order for 1,000 homes continues until 9 p.m. Thursday

By [Diane Pathieu](#), [John Garcia](#), [Liz Nagy](#), and ABC7 Chicago Digital Team 

Wednesday, June 30, 2021



CTIF International Association of Fire Services works to collect Lessons Learned and to promote learning from fires, accidents and natural disasters. Please contact us with your Lessons Learned paper or story to share here on CTIF.org.

READ MORE LESSONS LEARNED ON CTIF.ORG

Related content

25 May 2021

Accident analysis of the Beijing lithium battery explosion which killed two firefighters

The cause of the fire in the large storage facility in Neuhardenberg remains unclear

JULY 22, 2021 [SANDRA ENKHARDT](#) The extent of the damage is also still open, as the site has been cordoned off by the police since the fire. The fire brigade reports that highly toxic hydrofluoric acid was present in the extinguishing water during the fire, which th... [See more](#)

"Tesla Megapack battery ignites at substation after less than 6 months

[219](#) comment bubble on white

IT'S BETTER TO BURN OUT THAN TO FADE AWAY

icon [Brandon Vigliarolo](#)

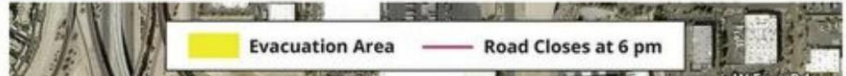
Wed 21 Sep 2022 // 16:30 UTC

## Fire crews tend to massive, smoldering battery in Chandler facility

[Ryan Randazzo](#) and [Perry Vandell](#) Arizona Republic

Published 8:45 p.m. MT April 21, 2022

[View Comments](#)





# lithium-ion battery fire site in Warwick considered within 'normal' range

Jun 30, 2023, 9:23am • Updated on Jun 30, 2023

By: News 12 Staff



## As 2 lithium-ion battery site fires smolder in Warwick, more questions raised over Staten Island facilities

Published: Jul. 09, 2023, 5:50 a.m.



A battery energy storage site at Littlefield Avenue and Hylan Boulevard in Eltingville is pictured here. Fires at two battery energy storage sites in Warwick, N.Y., have been smoldering for more than a week, after officials say a storm-related issue caused the newly installed units to ignite and burn in two separate incidents last month. (Staten Island Advance/Jan Somma-Hammel)

LONG ISLAND / POLITICS

ONLY IN NEWSDAY

## East Hampton storage battery could be out for months after fire



The 5-megawatt battery storage unit, located in East Hampton, has been out of service since a fire in May. Credit: Veronique Louis

By Mark Harrington

mark.harrington@newsday.com @MHarringtonNews

Updated June 27, 2023 7:42 pm

SHARE

A \$55 million storage battery in East Hampton that was damaged in a fire in late May could be out of commission for months this summer, just when it's needed most.

Here's drone footage of the burned Warwick NY Lithium Iron Phosphate ( LFP ) BESS fire on the school's campus:

<https://fb.watch/UcgAGRI6R/>



LOCAL NEWS >

# Tesla Moss Landing power storage facility fire shuts down Highway 1; Residents told to shelter in place

CBS NEWS BAY AREA

UPDATED ON: SEPTEMBER 20, 2022 / 12:37 PM / CBS/BAY CITY NEWS SERVICE





26 Jul 2023

## Lithium-Ion battery bank started offgassing in hospital: 80 people evacuated due to toxic fumes

EN

Hazmat, Lithium battery fires

A children's hospital in Tampa, Florida had to be evacuated because of toxic and potentially explosive gas, being released from about 30 lithium-ion batteries in the building.

BayNews9.com reported on July 20 on the Hillsborough County Fire Rescue being called out Thursday to a hazmat incident at Johns Hopkins All Children's Outpatient Center.

## Not so fast... the Bouldercombe Battery is not yet back into service after the fire

On September 26, the Bouldercombe battery in Queensland caught fire during its commissioning process. Now, it is being reported the battery facility is already back up and running – which isn't quite the case, WattClarity's Paul McArdle explains.

OCTOBER 18, 2023 PAUL MCARDLE

ENERGY STORAGE ENERGY STORAGE GRIDS & INTEGRATION OPINION & ANALYSIS UTILITY SCALE STORAGE AUSTRALIA QUEENSLAND



Genex had previously expected the commissioning process of its Bouldercombe complete by October.

Image: Genex Power

Share [Facebook] [Twitter] [LinkedIn] [WhatsApp] [Email]

From WattClarity

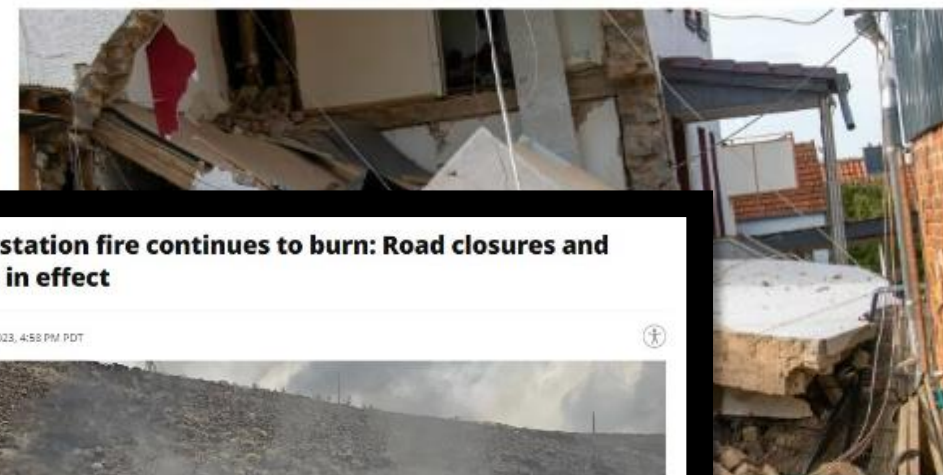
On Wednesday 27th September 2023 we wrote about 'Another (Tesla) battery fire' *NEM this one at Bouldercombe BESS in QLD*

## Investigators still uncertain about cause of 30 kWh battery explosion in Germany

A lithium iron phosphate (LFP) battery system recently exploded in a home in central Germany, preventing police and insurance investigators from entering due to the high risk of collapse. The explosion may have been preceded by off-gassing, but it remains unclear whether an external ignition source was the cause. Some scientists say thermal runaway may have triggered the blast.

OCTOBER 30, 2023 SANDRA ENKHARDT

DISTRIBUTED STORAGE ENERGY STORAGE GERMANY



## Idaho power substation fire continues to burn: Road closures and safety measures in effect

by CBS2 News Staff | Wuo, October 4th 2023, 4:58 PM PDT



Idaho Power substation battery fire (courtesy Canyon County Sheriff's Office)

Melba, ID (CBS2) — Canyon County Sheriff's Office has issued an update to a battery fire that started at the Idaho Power substation in Melba on Monday.

As of publication, the fire continues to burn, and the barrier set up around the site on Monday remains in place, according to CCSO. Battery fires can burn extensively due to their chemical makeup and contents.

# SOUND POLLUTION (NON-STOP NOISE!)

- Noise levels expected to reach **106dB** on site from the cooling fans that will operate 24/7.
- Without these fans, thermal runaway and explosions/fires occur
- Tenaska says they will build a wall to dampen the noise to 50dB in neighboring areas (equivalent to the sound of a dishwasher).
- How will they dampen the noise to address 2story homes?

## JACKHAMMER IS 102DB



## TRAIN HORN IS 90DB 500FT AWAY



(we can hear a train horn over a mile away! Imagine that non-stop)

Ex: 200 MW BESS under permit in Benton County

**Table 8. Modeled Octave Band Sound Power Level for Major Pieces of Project Equipment**

Sound Source	Sound Power Level (L <sub>w</sub> ) by Octave Band Frequency dBL									Broadband Level
	31.5	63	125	250	500	1k	2k	4k	8k	dBA
Step-up Transformer	77	77	73	73	73	67	62	56	49	73
Inverter	71	79	86	87	86	83	78	71	64	92
BESS	85	93	100	101	100	97	92	85	78	106
Substation Transformer	100	104	99	100	99	93	89	83	75	100

## NO SAFE EVAC PLAN FOR 800+ STUDENTS & RESIDENTS

- This is a residential-zoned area without proper infrastructure for major emergencies.
- How will students & residents evacuate safely when the transportation infrastructure is limited to 2-lane streets that all exit onto 164th street SE?!
- How will fire & police GET IN?

## MATTSON MIDDLES SCHOOL TEST SCORES MAY PLUMMET

A study from a [NY school](#) near a subway showed low test scores (constant noise interferes with learning), then after sound barriers & building updates, scores improved.



## HEALTH RISK TO MATTSON MIDDLE SCHOOL STUDENTS

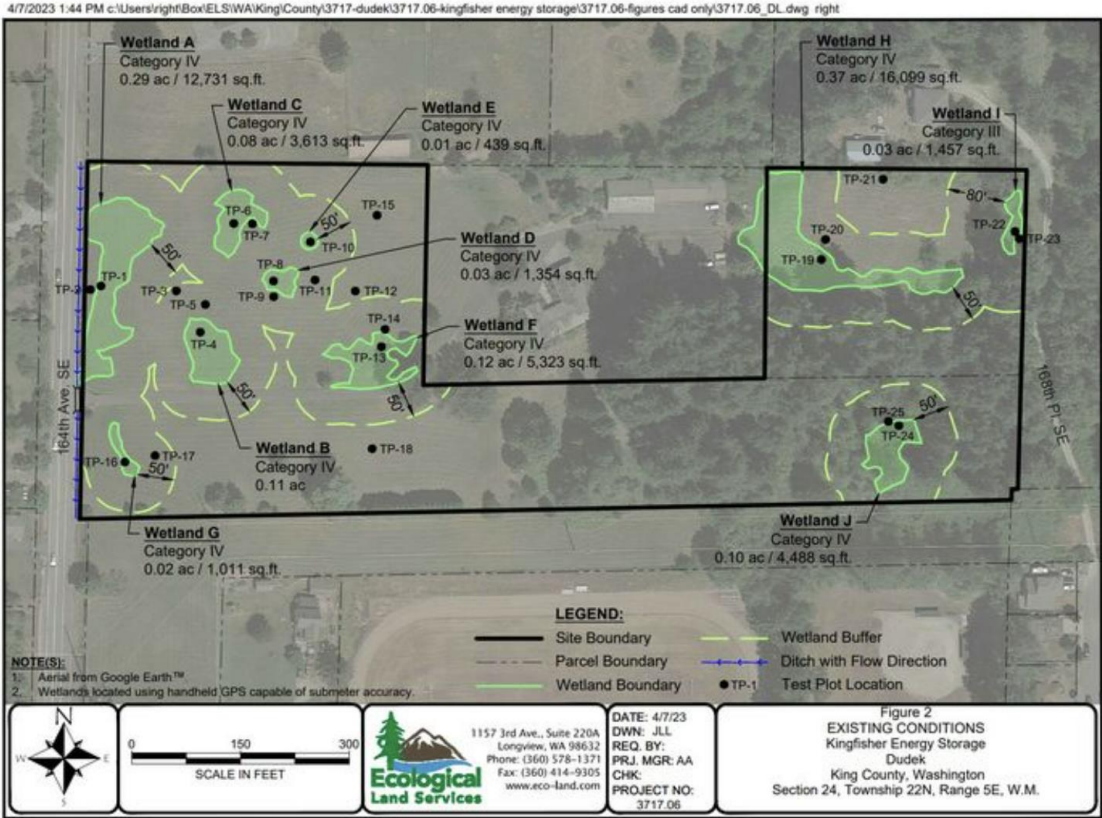
The middle school was constructed in 1981. It has an outdoor courtyard and hallway design with old HVAC and windows. “Shelter in place” is not a safe option when a fire or explosion occurs.

# WETLAND IMPACTS

- Per Wetlands Delineation Report, 10 wetlands present
- Approx 50 percent of the 14.1 acre project site is **unbuildable** as it contains Class III and IV wetlands which require a 150 foot setback

## WILL \$ WIN OVER ECOLOGY?

The county can permit destruction of the wetlands by a requesting that the developer provide compensation to a mitigation bank



The ecologist assigned by King County to perform the “eco review” replied to Lead Permitter Tracy Cui’s request with:



From: Pursley, Joseph <jpursley@kingcounty.gov>  
 Sent: Wednesday, May 17, 2023 1:57 PM  
 To: Cui, Tracy <Tracy.Cui@kingcounty.gov>  
 Subject: RE: Routing: CDUP23-0003 Battery Storage - eco review

Tracy,  
 Is this a test?

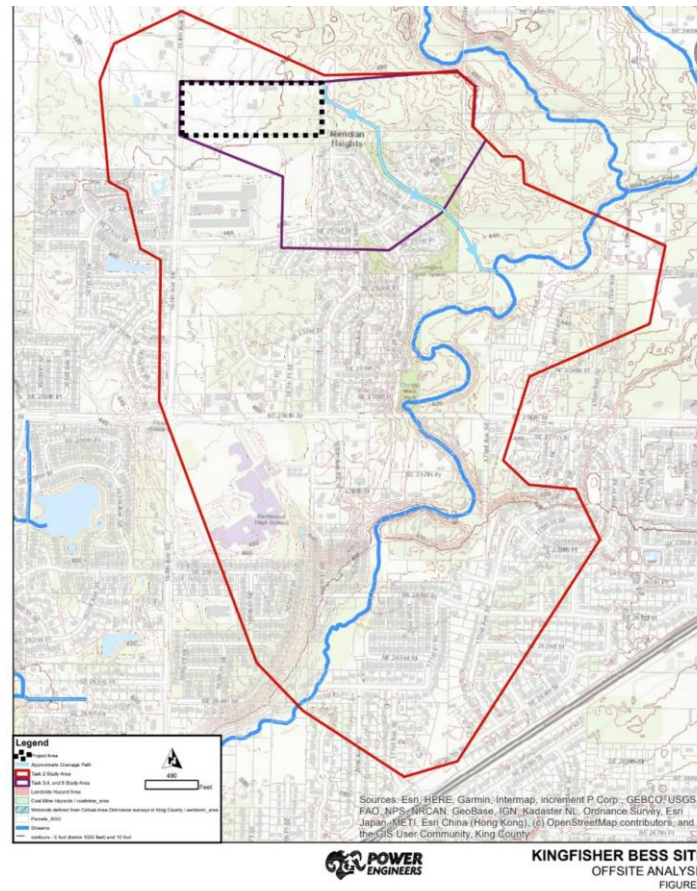
This proposed project fully impacts 10 wetlands and their buffers. I am not sure what is proposed can even be allowed through a Alteration Exception.

Maybe we can talk and figure out how to respond to the applicant.

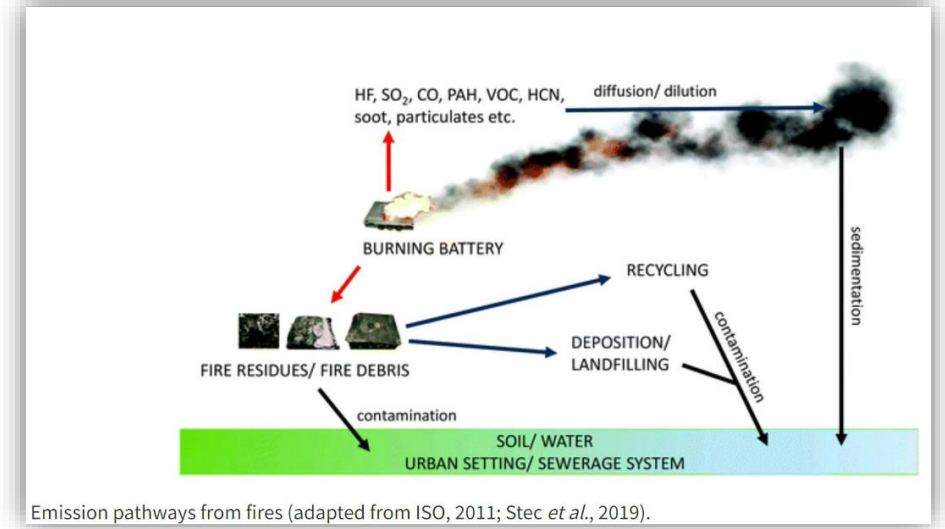
Joe

## CONTAMINATES WATER

- Runoff from water treatment to cool exploded/burning battery units will contaminate well-water/aquifer/water table
- Millions of gallons of defensive runoff spray puts area at risk



Drainage maps prepared for the Project shows the run-off will drain to the east polluting Little Soos Creek, a salmon bearing stream, and all its tributaries on the way to the Green River.



## WILDLIFE CORRIDOR IMPACTS

- The PGE transmission corridor where the High Voltage line will be sited is an active wildlife corridor.
- Deer, elk, coyotes, owls, raptors, all frequent this area and cross through the Project site, heading to Little Soos Creek for water.

## PROPERTY VALUE DECREASE

- For those homes around this industrial site, property values will assuredly decrease!
- This reduces school funding – as they depend on property taxes

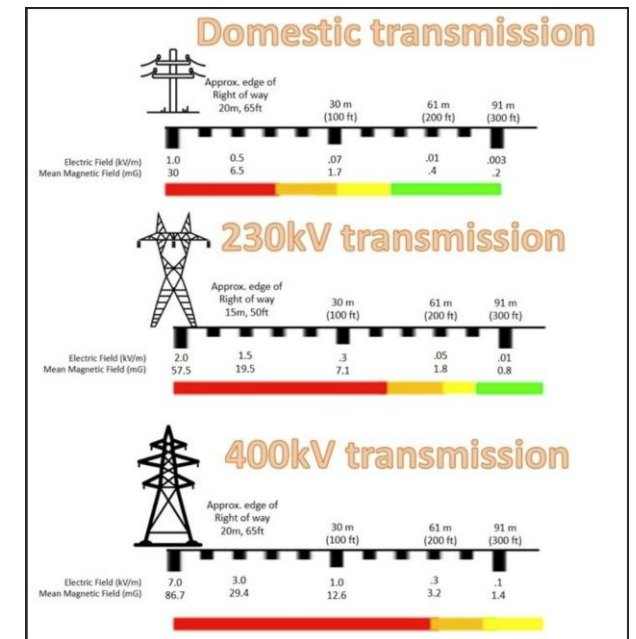


## ELECTROMAGNETIC RADIATION



- Cumulative radiation from the three lines can damage DNA and cells.
- Symptom include headaches, insomnia, depression, anxiety, etc.
- Several states have residential setbacks in place for these utilities that range from 300ft to 700ft. Washington State has no setbacks.

- High voltage power lines will be installed in a 150ft wide corridor behind the Tamarack Ridge Community.
- Two lower voltage lines are currently sited in that corridor.





\* & THE STATE

WHY IS KING COUNTY  
MOTIVATED TO  
PROCEED?



Clean Energy needs to be a **PRIORITY** focus with our future in mind!

# INCENTIVES FOR FASTER CLEAN ENERGY CONVERSION

But **HOW** it is handled needs to be **THOUGHTFUL** vs **RUSHED** (Or we risk exchanging 1 danger for another)

## WASHINGTON CLEAN ENERGY TRANSFORMATION ACT (CETA) - 2019

- Requires WA's electric supply be free of greenhouse gas(GHG) emissions by 2045
- By 2025 – NO COAL
- By 2030 – GHG neutral standard
- By 2045 100% clean standard

## KING COUNTY'S 2020 STRATEGIC CLIMATE ACTION PLAN (SCAP)

2020 SCAP Guiding Principles:

- Act with urgency and intention.
- Lead with racial justice and equity.
- Respond to community needs and priorities.
- Use and develop best available science.
- Seek systemic solutions.
- Build partnerships.
- Lead through local action.
- Prioritize health and co-benefits.
- Be transparent and accountable.



## PRESSURE FROM PRIVATE ENERGY COMPANIES

- Private energy companies are highly incentivized to get projects approved before regulations are in place.
- They have powerful lobbyists, PR firms employed, and billions of dollars motivating them.



## TENASKA WILL SELL TO CA, TX, ETC FOR 4X (MIN) THE PROFIT

- WA energy is the cheapest in the US – we currently overproduce & export 30% of our energy to other states (hydro power esp).
- Will continue to overproduce for projected 10+ years (but will need plan in place for...)



An aerial photograph of a large stadium, likely a high school or college arena, with a green field and surrounding campus buildings. The stadium seating is visible in the foreground and middle ground. A yellow rectangular box is overlaid on the center of the image, containing the text "KINGFISHER BESS RESPONSE TIMELINE".

**KINGFISHER BESS  
RESPONSE  
TIMELINE**

# TIMELINE

Tenaska proposed Renton BESS frozen d/t 6 month moratorium voted by Renton City Council (safety concerns!)

4/?/2022

Tenaska's Kingfisher Energy Project initial permit application titled "PREA22-0125"

(August 2022 a PR firm "Strategies360" was hired to help sway public opinion – esp after Renton "failure")

6/1/2022

Tenaska upgraded application for Conditional Use Permit titled "CDUP23-0003"

2/15/2023

James DeLay created Facebook group for awareness and research



3/2/2023



King County Councilman Reagan Dunn opposes BESS to permitting execs

3/23/2023

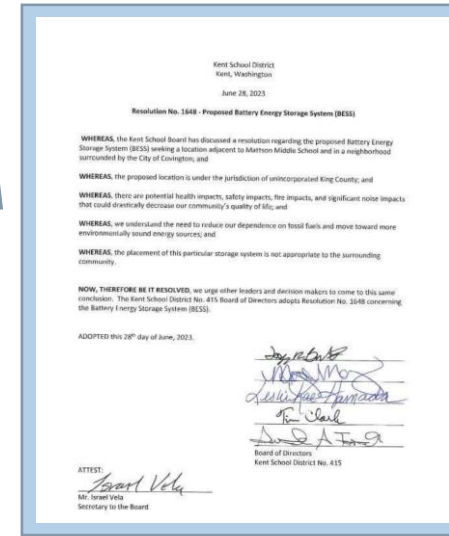


Volunteers go Door-to-Door in 2 closest housing developments by Mattson to inform of BESS & City Hall Presentation (call for Presence & Opposition!)

Volunteers go Door-to-Door to give new flyers re info on proposal & public comment period ending 6/26/23 per newspaper listing. (call for emails/comments!) (1,740 flyers distributed!)



Kent School District Board voted to oppose the Kingfisher BESS Project



Tenaska presentation to Covington City Hall (per their request).  
Huge turnout (most in over 10 yrs) at around 200 people



Volunteers became aware (via permit status website) that King County Permitter, Tracy Cui, noted the Conditional Use Permit "CDUP23-0003" was paused d/t "concerns on the procedural aspect of the CUP approach" & "ecological related issues"



Seattle Times article released entitled: "Big Batteries by a school? Project stirs concerns as WA seeks clean energy" by Daniel Beekman



Covington City Council sent very strongly worded opposition letter to King County:

“we have unequivocally concluded that the siting of this BESS in a residential neighborhood and near Mattson Middle School is a **grave neglect of the life and safety duty you owe King County residents.**”

At King County’s “Local Services & Land Use Committee”, Sarah Perry discussed BESS proposed ordinance (#2023-0263) to add regs to K.C.C. 21A around additional insurance requirements for over 2MW, setbacks from vegetation, & basic fire safety systems. IT IS NOT STRONG ENOUGH AS SITING NOT WELL ADDRESSED (was shelved for more talks)

It was officially announced that **Tenaska let K.C. permit expire.** This was presented as a “win” by Reagan Dunn etc – but in his letter also stated “However, this doesn’t mean they couldn’t reapply for a new permit” – via applying as a utility or via State permit route...



Covington Days Parade & Festival:

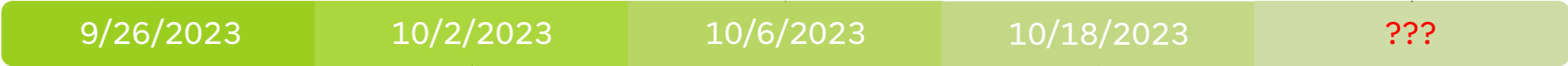
Volunteers educated public & advertised newly created central hub website of [www.movethebattery.com](http://www.movethebattery.com)

Director of King County Permitting (Jim Chan) commented at the Fairwood Town Hall meeting that Tenaska was not responding to them anymore re our BESS and is **“waiting for opposition to die down” before moving forward in next steps**

At this “Local Services and Land Use Committee”, Sarah Perry gave disappointing speech diminishing risks of fire, injuries, & constant sound decibels to locals – then admitted needed more education & shelved Proposed Ordinance for later.

\*\* Per Tukwila’s City Council, Tenaska withdrew permit through their city and are pursuing ALL permits via the Washington State Energy Facility Site Evaluation Council (EFSEC). (Gov Jay Inslee to be final vote once review is ready)

\*\* When will EFSEC permit be announced?? Emails will not be recorded until Public Comment Period... but you can educate everyone you know & keep the topic fresh! Prime the pumps! Watch for Updates & be ready to ACT



Melba, Idaho BESS fire in new (not even turned on yet) 24MW site – burned 4 days w/7 miles of roads blocked d/t toxic smoke and hotels offered to residents to evacuate (1 of many recent/worldwide fires – but examples getting closer and more frequent as more BESS are approved & built!)

Via website and FB group, the push was made for citizens to write Permitting Division BEFORE deadline of 10/18 re comments to improve BESS Proposed Ordinance – namely asking for “a minimum distance of 1/2 a mile from schools and hospitals for BESS installations larger than 2mW.” (would eliminate this site d/t Mattson Middle School)

An aerial photograph of a school campus. In the foreground, there are rows of grey bleachers. To the right, a green athletic field is visible, surrounded by a red running track. In the background, there are several school buildings and a parking lot. The scene is set in a green, wooded area.

**CALL TO  
ACTION!!**



# CALL TO ACTION!!

What YOU Can Do To Make An Impact



## STAY INFORMED VIA LOCAL CRAFTED WEBSITE

- Built by neighbors as more concise central hub for key info & links related to this BESS site.
- Join email list – action items & FYIs to be sent (some emergent as Permit situation evolves)
- “Send us a message” if you have ideas, skills to assist, or questions

[WWW.MOVETHEBATTERY.COM](http://WWW.MOVETHEBATTERY.COM)

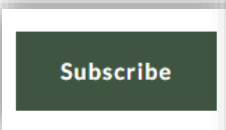
SEND US A MESSAGE

Name

Email\*

Message

This site is protected by reCAPTCHA and the Google Privacy Policy and Terms of Service apply.



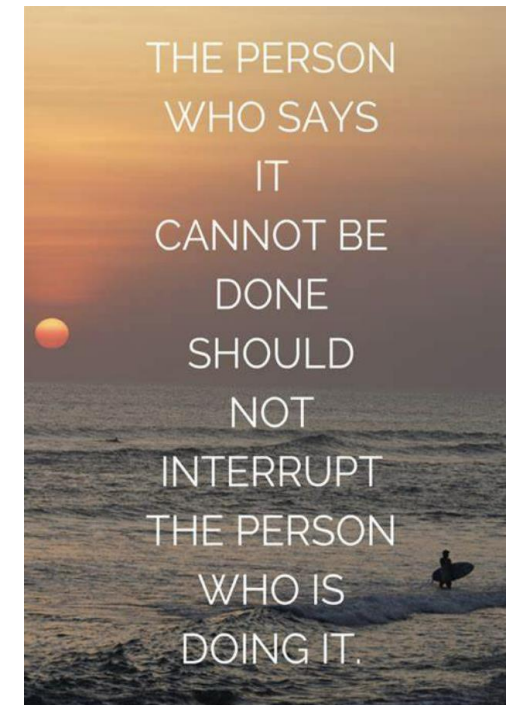
## YOUR VOICE MATTERS & EMAILS MULTIPLY INTO A MOVEMENT

- Refer to [www.movethebattery.com](http://www.movethebattery.com) for a list of King County officials (& beyond) to email
- opposition/concerns & rally support
- Emails (esp during critical public comment periods) are more impactful than petitions – even if short and copy & pasted to multiple recipients - Public Officials read & DO respond!

## BE READY TO ACT

Be ready to act during the Appeal Process once/if the County approves the application for a Critical Area Alterations Exception!! This CAEX would eliminate many studies meant to protect the public & environment!

## EDUCATE FRIENDS & FAMILY – AWARENESS IS KEY TO TAKING ACTION





# REFERENCES

## [BIG BATTERIES BY A SCHOOL? PROJECT STIRS CONCERNS AS WA SEEKS CLEAN ENERGY | THE SEATTLE TIMES](#)

7/8/2023 – Wonderfully in-depth piece about BESS's, Washington current state, and proposed site by Covington's Mattson Middle School

## [COVINGTON CITY COUNCIL MEETING - JUNE 13, 2023 - YOUTUBE](#)

Tenaska/ Kingfisher presentation to Covington City Hall Recording.

## [STOP THE PROPOSED COVINGTON BATTERY ENERGY STORAGE SYSTEM \(BESS\) | FACEBOOK](#)

FB opposition site filled with news articles, city public records, and information related to dangers related to this BES and it's proposed location

## [FAQ | MOVE THE BATTERY](#)

Built by neighbors & designed as more concise central hub for key information and links related to this BESS site. Find current updates, Action items, and facts for easy reference.

## [KINGFISHER WETLANDS DELINEATION REPORT.PDF](#)

This report describes the ten wetlands and their buffers within the site according to the applicable sections of the King County Code (KCC) Chapter 21A.24, Critical Areas.

## [SITING ENERGY STORAGE - NOV 16 2022 - YOUTUBE](#)

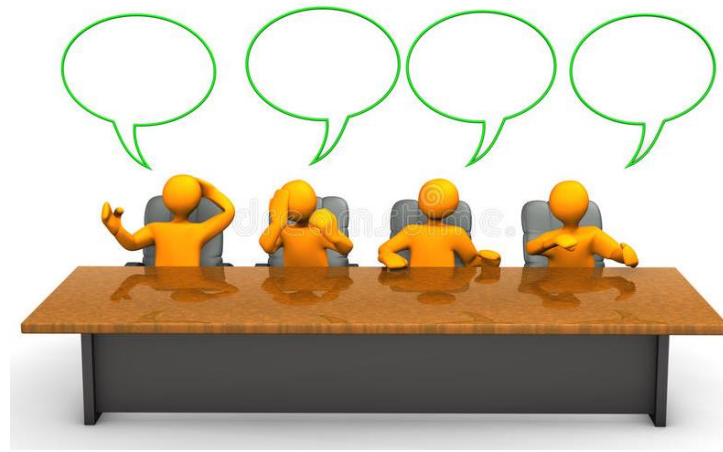
Workshop from Washington State Dept of Commerce re BESS siting and safety. (Research analyst Jeremy Twitchell from Pacific Northwest National Laboratory included speech)

## [ACCELA CITIZEN ACCESS](#)

King County's permit page which allows us to follow the publicly avail timeline & details around this (and any) active or paused permit.

## [BESS FAILURE EVENT DATABASE - EPRI STORAGE WIKI](#)

A public resource for documenting publicly-available data on battery energy storage failure events from around the world. All information included is available in the linked public documents.



# PANEL DISCUSSION

\*\* This section was for in-person presentation for local HOA residents meeting. We had Fire Marshal rep come to answer questions as well as individuals well-versed in permit procedures.  
(Any group can ask us to come present this PPT & topic in person if desired)

# PERMITTING DEFINITIONS (FOR REFERENCE)

## Permitting Avenues for Renewable Energy Projects

**EFSEC** The State of Washington Energy Facility Site Evaluation Council (EFSEC or Council) provides a "one-stop" siting process for major energy facilities in the State of Washington. EFSEC coordinates all evaluation and licensing steps for siting certain energy facilities in Washington. EFSEC specifies the conditions of construction and operation. If approved, a Site Certification Agreement is issued in lieu of any other individual state or local agency permits. EFSEC also manages an environmental and safety oversight program of facility and site operations.

**Conditional Use Permit** (CUP) allows the county to consider a use of a property that is not routinely allowed, but can potentially be made compatible through the application of project and site-specific conditions. The CUP process also requires public notification and an opportunity for the public to comment on whether the proposal meets the criteria for approval.

**Critical Area Alteration Exception.** This application process allows adjustments in the application of zoning code standards related to critical area buffers to a particular property.

### What is the timeline for processing a critical area alteration exception?

- Permitting staff will schedule a pre-application meeting within 30 days from the date of the request. (June 1, 2023)
- Permitting staff has 28 days from the date the application is filed to determine whether the application is complete. (TBD)
- After Permitting staff determines that the application is complete, a Notice of Application is issued. **The minimum public comment period is 21 days.**
- The process to make a final decision on a critical area alteration exception generally takes 120 days provided no appeals are filed or substantial additional information is required.

**There is a 14-day appeal period whereby an aggrieved person can file an appeal together with an appeal filing fee to the [King County Hearing Examiner](#).**

## PERMITTING DEFINITIONS (FOR REFERENCE)

**State Environmental Protection Act (SEPA)** is a State of Washington policy that requires state and local agencies to consider the likely environmental consequences of a proposal before approving or denying the proposal.

**Categorical Exemptions.** Certain types of proposals are automatically exempt from the threshold determination and EIS preparation because they are a size or type unlikely to cause a significant adverse environmental impact.

**When do categorical exemptions not apply?** proposals involving lands covered by water; projects requiring a license to discharge to the air or water; or projects requiring a rezone. A city or county may also eliminate some exemptions if the project is located within a designated critical area.

NOTE: Representative Sean Penwell cannot comment on safety record of BESS sites... can only speak to emergency response process

## PUGET SOUND REGIONAL FIRE AUTHORITY



## FINAL Q&A

### REMINDER: CLEAN ENERGY IS VITAL FOR OUR FUTURE.

But this massive industrial battery sites near a school and dense communities is a disregard for public safety!



KNOWLEDGE IS POWER, &  
UNITY IS STRENGTH

