

BATTERY ENERGY STORAGE SYSTEMS (BESS)

And The Battle for Safety in our Community



7/25/2023
Taryn Pfeifer

GOAL: TO EDUCATE OUR COMMUNITY ABOUT THE SITUATION AND RISKS



WHAT

What is a BESS and what is being proposed near our homes?
What are the dangers?



WHO/ WHY

Who is building this and why in this location?
Who benefits?



WHEN

Discuss the timeline of the permit/ application to date and what is predicted to come.



ACTION?!

What can YOU do to oppose in ways that impact King County leaders?
How can you add your voice?

An aerial photograph of a large construction site. The site is filled with numerous rows of grey concrete blocks, likely for a stadium or arena, arranged in a curved pattern. In the background, there is a green field with a red running track and a baseball field. A yellow text box is overlaid on the center of the image, containing the text "HOW WE FOUND OUT ABOUT THE PERMIT".

**HOW WE
FOUND OUT
ABOUT THE
PERMIT**

NEIGHBOR DIGS INTO RESEARCH



CORE SAMPLES?

James Delay & his wife Desiree saw core samples being drilled next to their home in Dec 2022. He was curious what they were looking for...

THE STORY DEEPENS

Found CDUP23-0003 permit application for **14 acres** of battery storage units (lithium) – called Kingfisher Energy Project

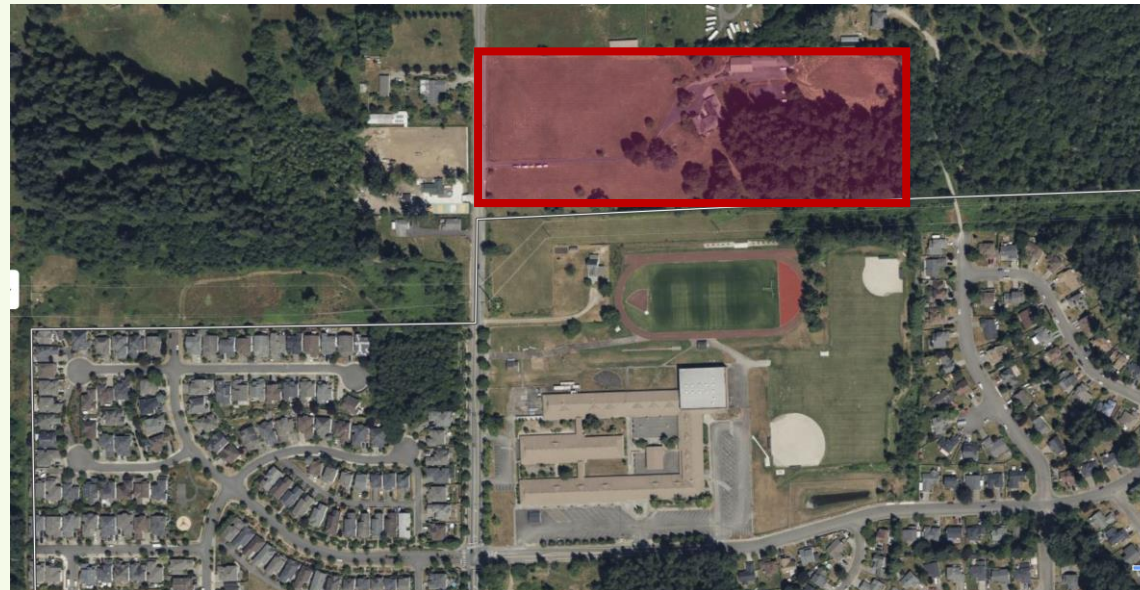
OWNER OF LAND IS 83 & CHILDREN WISH TO SELL (NONE LOCAL)

The current plans are to build asap around her home until she dies, then they can level the house.

DANGERS & SCALE SHOCKING!

His research soon showed:

- Little regulations exist around this new tech
- There ARE dangers & catastrophic side effects
- The size is MASSIVE on the world scale
- No one even KNEW about this!



FACEBOOK PAGE FORMED 3/2023

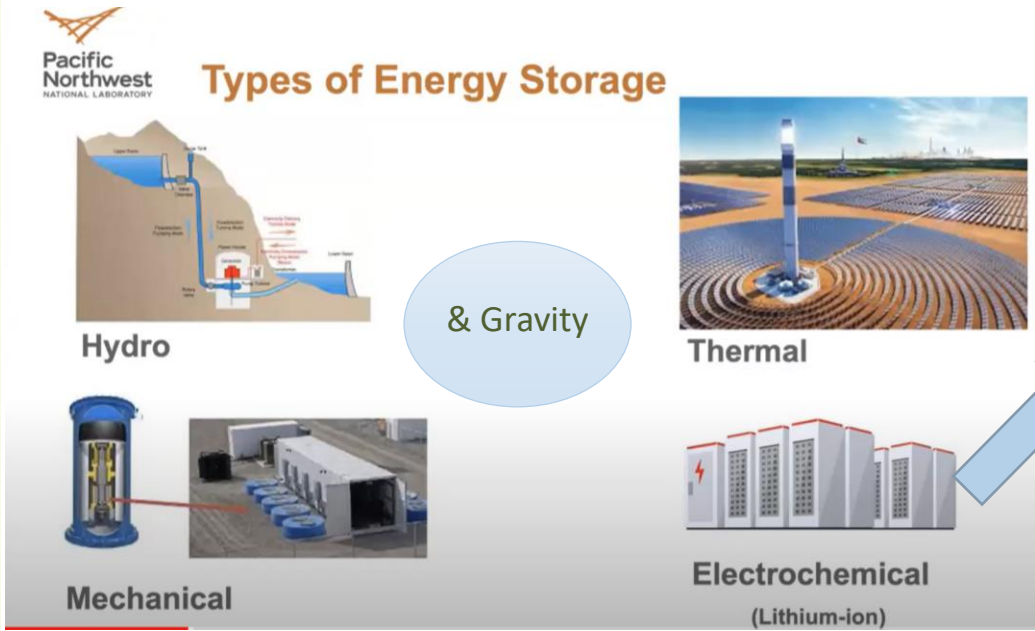
His Facebook page is a database for research/info; articles of fires from around the world, King County info, upcoming meetings, & community engagement

An aerial photograph of a school campus. In the foreground, there is a large, modern stadium with many rows of grey bleachers. To the right of the stadium, there are several athletic fields, including a baseball field and a soccer field. In the background, there are more school buildings and a parking lot. The text "WHAT IS A BESS?" is overlaid in the center of the image, enclosed in a yellow rectangular box.

**WHAT IS A
BESS?**

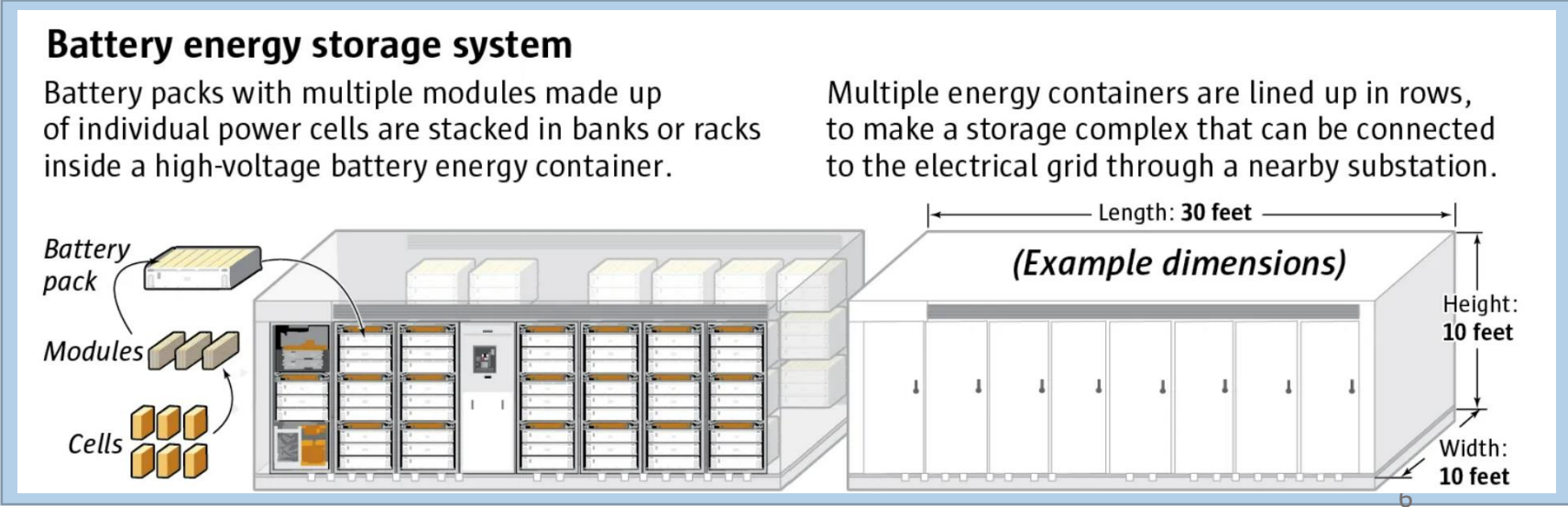
WHAT IS A BESS?

- A type of battery-based energy storage system that can be used to store excess energy from renewable sources.
- Energy comes from solar, wind, hydro, etc.
- This stored energy can then be drawn upon when needed to meet various demands for power



LITHIUM-ION VS LFP

- Lithium ion is most unstable
- Lithium Iron Phosphate (LFP) is considered “less fire prone” but explosions are far more damaging! (less data as well)
 - BESS builders switched to LFP in 2021 (Tesla, etc)
- Both have lifespan (10-20 yrs) and maintenance issues



ARE ANY IN WASHINGTON STATE?

- Most in the US are packed into states with high demand for energy w/o enough production: California, Texas, Florida, Arizona, New York.
- **Washington has only 2 operating BESS sites** (test sites)
- Both are near Boeing (industrial zones) and **2MW** (*very small*)
- Many more are being proposed in Washington RIGHT NOW with less thoughtful siting – LIKE OUR COVINGTON COMMUNITY!

US & WORLDWIDE BESS SITING

* MANY ARE PLACED NEXT TO WIND/SOLAR FARMS



* LARGER BESS SITES STARTED ONLY AROUND 5 YEARS AGO (2018)

* ZONING STANDARDS DO NOT EXIST IN WASHINGTON STATE

* “PACIFIC NORTHWEST NATL LAB” HAS BEEN GATHERING DATA AROUND STATE ORDINANCES/ CODES OTHER STATES ARE DRAFTING

* THEY TRY TO BUILD NEAR SUBSTATIONS TO MAXIMIZE EFFICIENCY OF TRANSFER



Nursling, Southampton (UK) 50MW BESS - unveiled 2021

An aerial photograph of a large stadium with numerous rows of grey seats. The stadium is situated on a grassy field. In the background, there is a green field with a red track and a baseball field. A large, rectangular building is visible to the right of the stadium. The text "SIZE UNDERSTANDING" is overlaid in a green box in the center of the image.

**SIZE
UNDERSTANDING**

SIZE UNDERSTANDING

- Residential scale battery storage is in kilowatts, but utility-scale battery storage is in megawatts (1 megawatt = 1000 kilowatts)
- WA has only two, 2 MW sites currently, Tenaska proposes 200+ MW to be behind Mattson Middle School!**
- Largest in the world is Moss Landing, CA – 400MW**

EXAMPLE OF 1 "CABINET" (2MW)



MOSS LANDING, CA (400MW)



EXAMPLE OF 11 ENCLOSURES (20MW) (shipping container sized)



An aerial photograph of a school campus. In the foreground, there are rows of grey bleachers. To the right, a green football field is visible with a red running track around it. In the background, there are several school buildings and more greenery. A yellow rectangular box is overlaid on the image, containing text.

**“TENASKA” SITE RIGHT
NEXT TO COVINGTON
SCHOOL & HOMES**

7.7 Billion dollar
Private Energy
Company

KINGFISHER BATTERY ENERGY STORAGE PROJECT

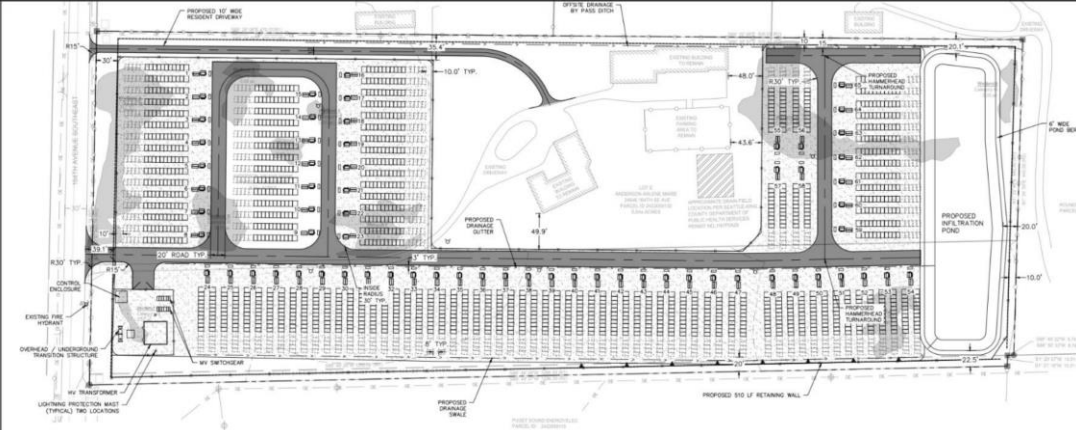
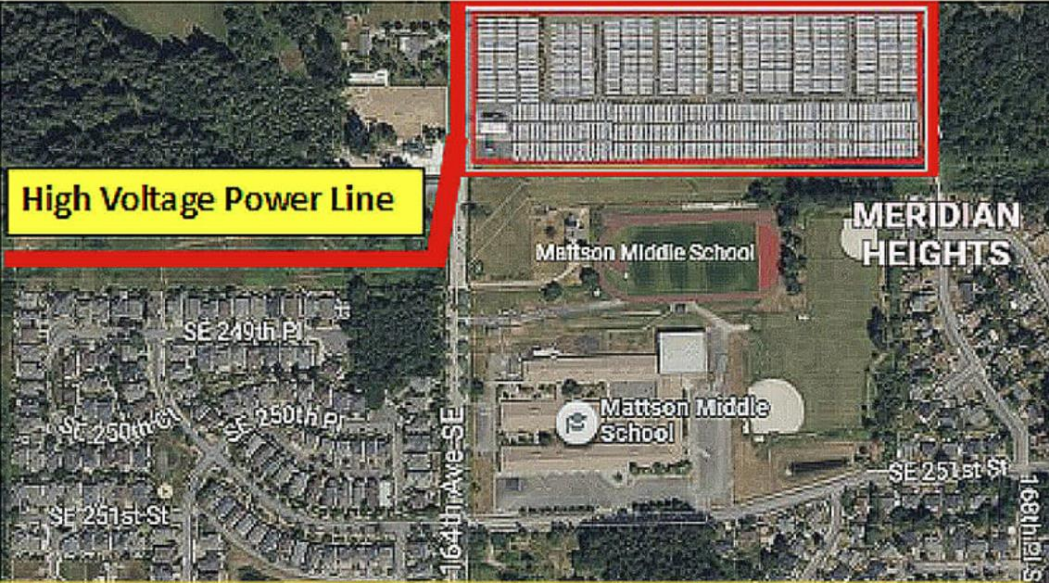
250 Million dollar
complex with >100
shipping container
sized battery units

Tenaska (Nebraska energy company) wants to build
INDUSTRIAL SITE on 14 ACRES

- Would be located in unincorporated King County, next to Mattson Middle School.
- Would therefore be permitted by King County – NOT City of Covington

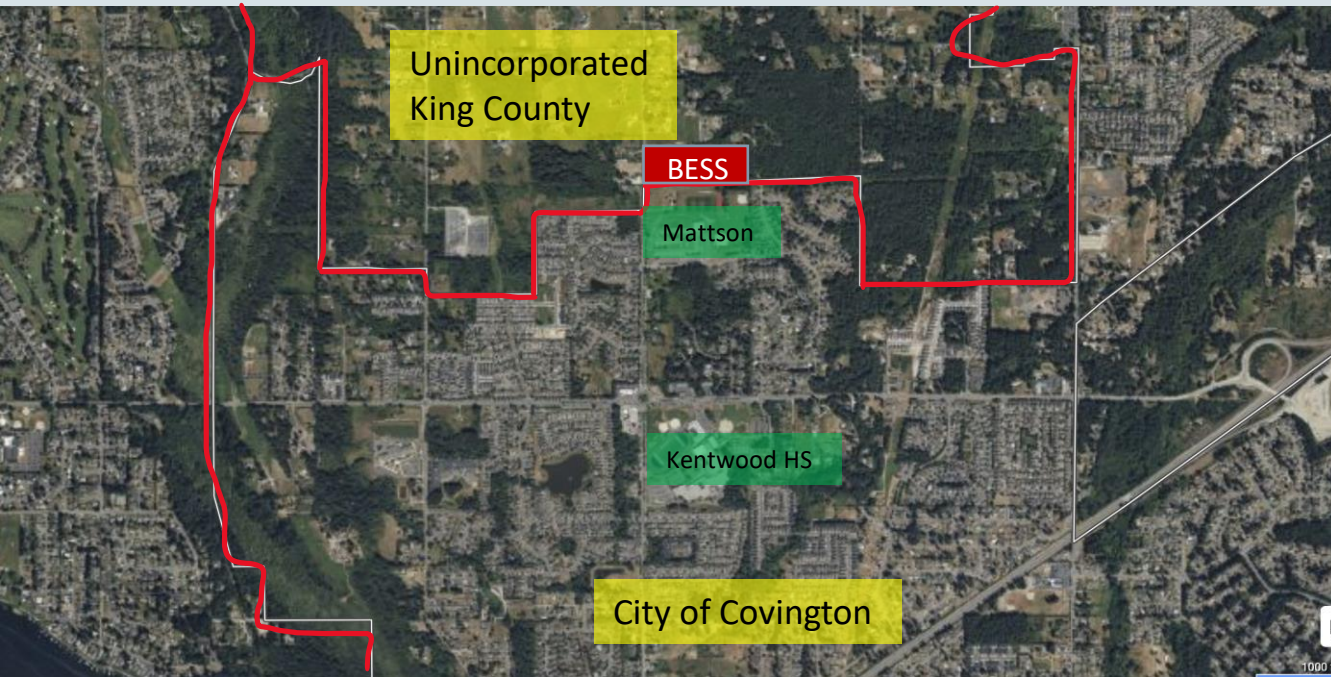


- 200+ MW plan
- Interconnection voltage: 230 kV
- Point of Interconnection: Berrydale Substation
- Schedule: Construction of 8-12 months
- Start of Operations planned for 2025
- Sample layout shown – original + adjusted versions (visual sim in development)



KINGFISHER BATTERY ENERGY STORAGE PROJECT

“Clever” Site Choice to Minimize Public Awareness & Rush Permit Approval Without Opposition



- Whatcom County voted in 2022 to limit BESS sites more than 5 MW to industrial zones and rural sites near substations
- Tenaska tried to build 9 acre site in Renton in 2022
 - In April 2022 the Renton City Council placed 6-month moratorium on battery storage proposals while they determine how to be “safe”
- **No restrictions currently in King County!**
 - Unincorporated King County has no City Council representative to speak up for the residents (& Covington has no jurisdiction to regulate this site)
 - Tenaska hoped for less awareness when it mattered; TOO LATE to speak up once permitted (as proven in Grand Terrace, CA – rare industrial zoned site next to a school that never knew until it was built)

** Tenaska has been working on this permit “over a year”

An aerial photograph of a large stadium with a green field and surrounding buildings. The stadium is the central focus, with a large green field in the foreground and a track and field area in the background. The stadium seating is visible, and there are several buildings and parking lots around it. The text "DANGERS & IMPACTS" is overlaid in a yellow box in the center of the image.

DANGERS & IMPACTS

BATTERY FIRES/EXPLOSIONS

- These fires can't be extinguished with chemicals or water – they must “burn out” while firefighters in Hazmat suits monitor.
- In the past they have been caused by extreme heat, lightning strikes, or malfunctions.
- Surprise, AZ fire in 2020 burned for 11 days & residents for miles around were forced to evacuate...

Pacific Northwest NATIONAL LABORATORY

Failure Modes/Hazards

Thermal Abuse Electrical Abuse

Mechanical Abuse

Environmental Impacts Internal Faults

Thermal Runaway
↓
Flammable Gases
↓
Stranded Energy

Mat



NOT “IF”, BUT “WHEN” A BATTERY FIRE/EXPLOSION OCCURS!

Pacific Northwest NATIONAL LABORATORY

Reducing Explosion Risks is Key Gap

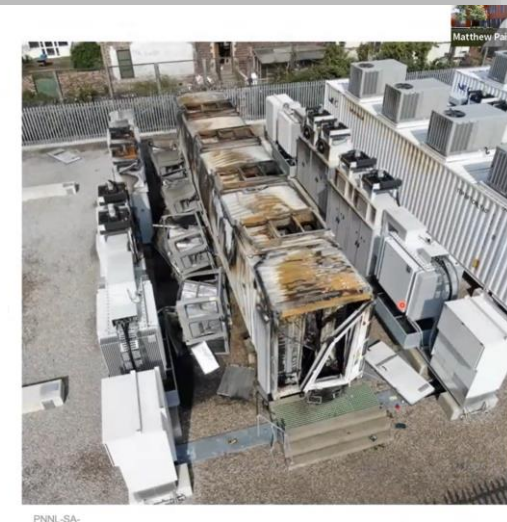
An energy storage system fire and explosion at a solar power facility in Hongseong, South Chungcheong Province, on April 6.

Credit: Business Korea.

Pacific Northwest NATIONAL LABORATORY

No Warning Prior to Explosion

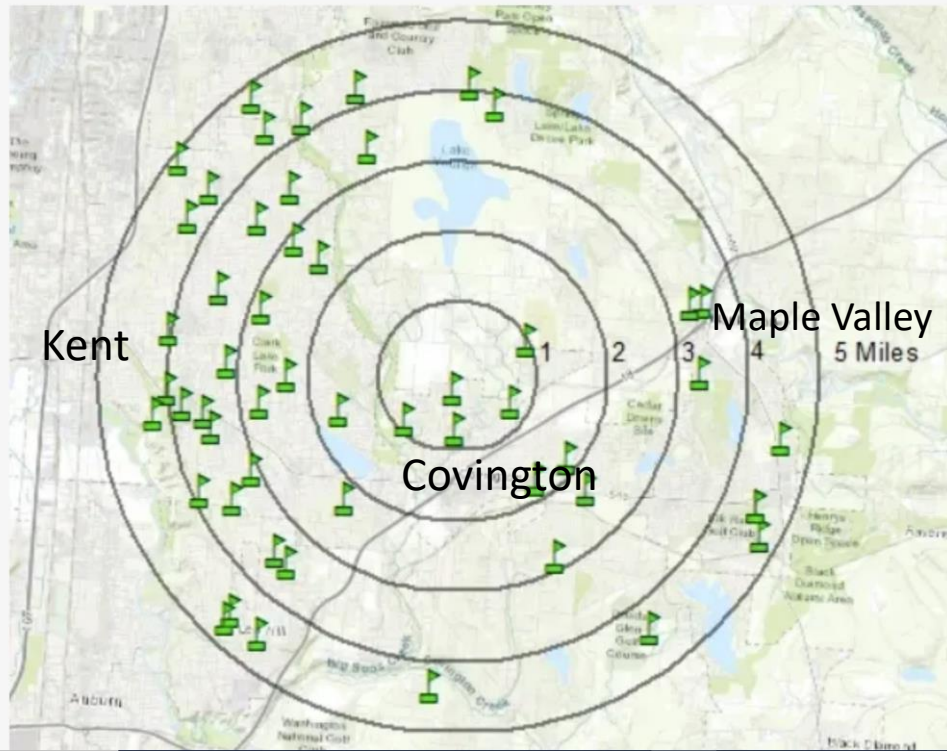
- Extension of fire contained to single enclosure.
- Firefighting operations focused on exposure protect
- Merseyside Fire Dept responding agency
- Fire cause investigation ongoing



slides taken from Nov 2022 Workshop by Washington State Dept of Commerce re BESS siting and safety – Matthew Paiss (PNNL technical fire advisor) slides

FIRES LEAD TO DEADLY TOXIC SMOKE & IMMEDIATE EVACUATIONS

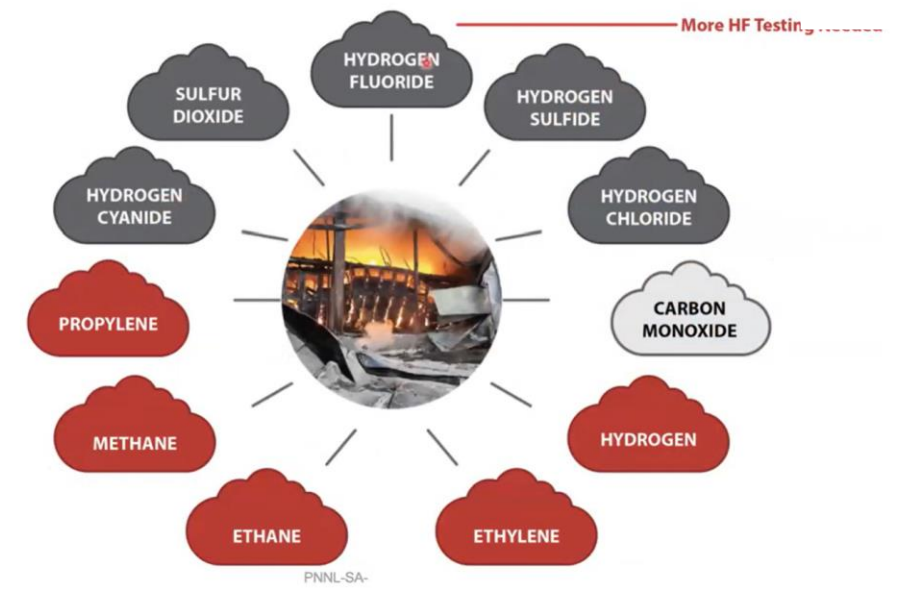
THE 5 MILE TOXIC PLUME RADIUS



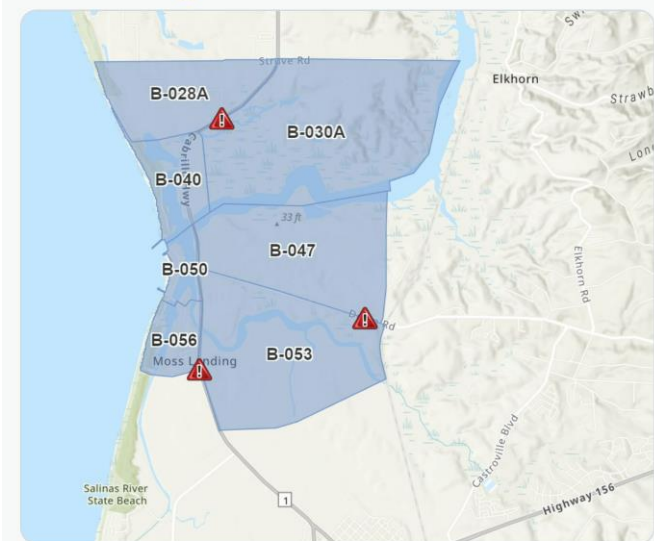
50+ SCHOOLS WILL BE AFFECTED BY THE TOXIC PLUME

Based on previous fires at these facilities, the toxic plume may reach a 5-mile radius requiring evacuation of schools, residents and businesses.

Hazards – Flammable/Toxic Gases



#MossLandingIncident



* 1 of the many Moss Landing fires which resulted in freeway shutdown and shelter-in-place d/t toxic fumes!

BESS FIRES IN THE NEWS

(A VERY SMALL SAMPLING)

Report: Four Firefighters Injured In Lithium-Ion Battery Energy Storage System Explosion - Arizona

July 29, 2020

FSRI releases new report investigating near-miss lithium-ion battery energy storage system explosion.

Funded by the U.S. Department of Homeland Security (DHS) and Federal Emergency Management Agency (FEMA) Assistance to Firefighters Grant Program, *Four Firefighters Injured In Lithium-Ion Battery Energy Storage System Explosion - Arizona* is the first report issued as part of the Study of

Morris fire: Lithium batteries a concern as blaze burns for 2nd day, evacuation order extended

Evacuation order for 1,000 homes continues until 9 p.m. Thursday

By [Diane Pathieu](#), [John Garcia](#), [Liz Nagy](#), and ABC7 Chicago Digital Team 

Wednesday, June 30, 2021



CTIF International Association of Fire Services works to collect Lessons Learned and to promote learning from fires, accidents and natural disasters. Please contact us with your Lessons Learned paper or story to share here on CTIF.org.

[READ MORE LESSONS LEARNED ON CTIF.ORG](#)

Related content

25 May 2021

Accident analysis of the Beijing lithium battery explosion which killed two firefighters

The cause of the fire in the large storage facility in Neuhardenberg remains unclear

JULY 22, 2021 [SANDRA ENKHARDT](#) The extent of the damage is also still open, as the site has been cordoned off by the police since the fire. The fire brigade reports that highly toxic hydrofluoric acid was present in the extinguishing water during the fire, which th... [See more](#)

"Tesla Megapack battery ignites at substation after less than 6 months

[219](#) comment bubble on white

IT'S BETTER TO BURN OUT THAN TO FADE AWAY

icon [Brandon Vigliarolo](#)

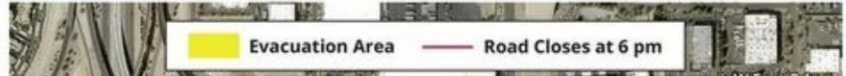
Wed 21 Sep 2022 // 16:30 UTC

Fire crews tend to massive, smoldering battery in Chandler facility

[Ryan Randazzo](#) and [Perry Vandell](#) Arizona Republic

Published 8:45 p.m. MT April 21, 2022

[View Comments](#)



lithium-ion battery fire site in Warwick considered within 'normal' range

Jun 30, 2023, 9:23am • Updated on Jun 30, 2023

By: News 12 Staff



Here's drone footage of the burned Warwick NY Lithium Iron Phosphate (LFP) BESS fire on the school's campus:

<https://fb.watch/UcgAGRI6R/>



As 2 lithium-ion battery site fires smolder in Warwick, more questions raised over Staten Island facilities

Published: Jul. 09, 2023, 5:50 a.m.



Very energy storage site at Littlefield Avenue and Hylan Boulevard in Littlefield is pictured here. Fires at two battery energy storage sites in Warwick, N.Y., have been smoldering for more than a week, after officials say a common-related issue caused the newly installed units to ignite and burn in two separate incidents last month. (Staten Island Advance/Jan Somma-Hammel)

LONG ISLAND / POLITICS

ONLY IN NEWSDAY

East Hampton storage battery could be out for months after fire



The 5-megawatt battery storage unit, located in East Hampton, has been out of service since a fire in May. Credit: Veronique Louis

By Mark Harrington

mark.harrington@newsday.com [MHarringtonNews](https://twitter.com/MHarringtonNews)

Updated June 27, 2023 7:42 pm

SHARE

A \$55 million storage battery in East Hampton that was damaged in a fire in late May could be out of commission for months this summer, just when it's needed most.

LOCAL NEWS >

Tesla Moss Landing power storage facility fire shuts down Highway 1; Residents told to shelter in place

CBS NEWS BAY AREA

UPDATED ON: SEPTEMBER 20, 2022 / 12:37 PM / CBS/BAY CITY NEWS SERVICE



SOUND POLLUTION (NON-STOP NOISE!)

- Noise levels expected to reach **106dB** on site from the cooling fans that will operate 24/7.
- Without these fans, thermal runaway and explosions/fires occur
- Tenaska says they will build a wall to dampen the noise to 50dB in neighboring areas (equivalent to the sound of a dishwasher).
- How will they dampen the noise to address 2story homes?

JACKHAMMER IS 102DB



TRAIN HORN IS 90DB 500FT AWAY



(we can hear a train horn over a mile away! Imagine that non-stop)

Ex: 200 MW BESS under permit in Benton County

Table 8. Modeled Octave Band Sound Power Level for Major Pieces of Project Equipment

Sound Source	Sound Power Level (L _w) by Octave Band Frequency dBL									Broadband Level
	31.5	63	125	250	500	1k	2k	4k	8k	dBA
Step-up Transformer	77	77	73	73	73	67	62	56	49	73
Inverter	71	79	86	87	86	83	78	71	64	92
BESS	85	93	100	101	100	97	92	85	78	106
Substation Transformer	100	104	99	100	99	93	89	83	75	100

NO SAFE EVAC PLAN FOR 800+ STUDENTS & RESIDENTS

- This is a residential-zoned area without proper infrastructure for major emergencies.
- How will students & residents evacuate safely when the transportation infrastructure is limited to 2-lane streets that all exit onto 164th street SE?!
- How will fire & police GET IN?

MATTSON MIDDLES SCHOOL TEST SCORES MAY PLUMMET

A study from a [NY school](#) near a subway showed low test scores (constant noise interferes with learning), then after sound barriers & building updates, scores improved.



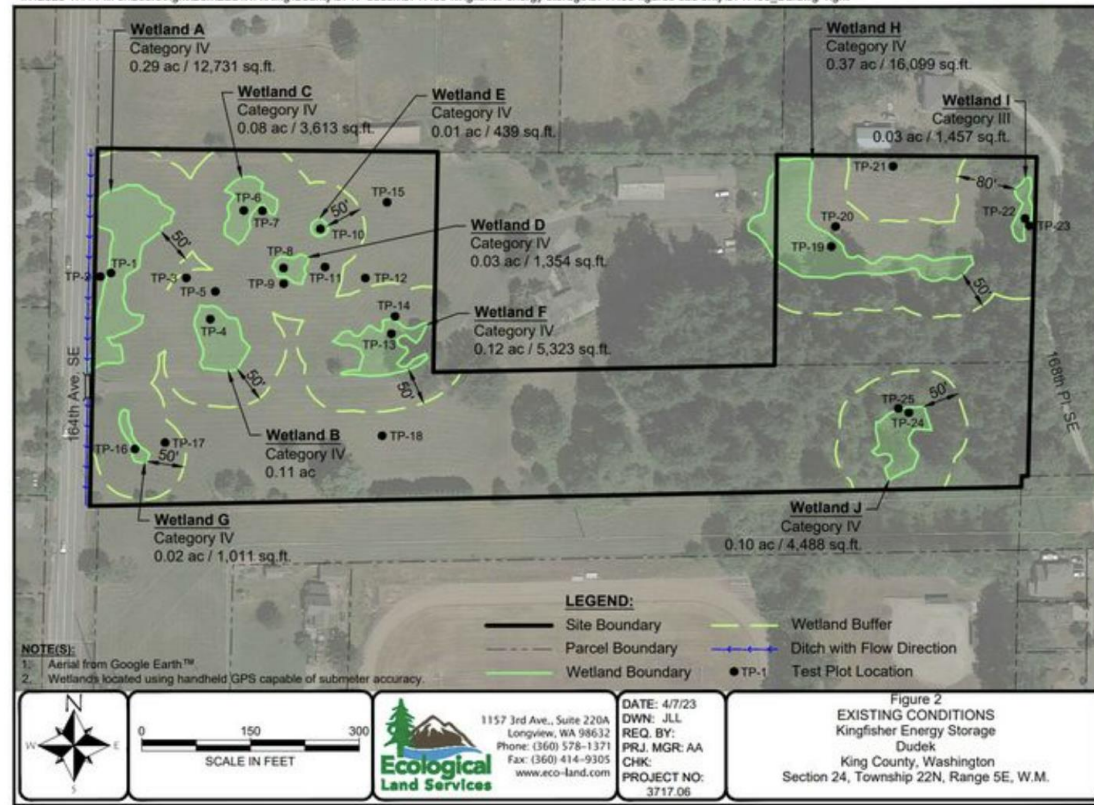
HEALTH RISK TO MATTSON MIDDLE SCHOOL STUDENTS

The middle school was constructed in 1981. It has an outdoor courtyard and hallway design with old HVAC and windows. “Shelter in place” is not a safe option when a fire or explosion occurs.

WETLAND IMPACTS

- Per Wetlands Delineation Report, 10 wetlands present
- Approx 50 percent of the 14.1 acre project site is **unbuildable** as it contains Class III and IV wetlands which require a 150 foot setback

4/7/2023 1:44 PM c:\Users\righth\Box\ELSIWA\King\County\3717-dudek\3717.06-kingfisher energy storage\3717.06-figures cad only\3717.06_DL.dwg right



The ecologist assigned by King County to perform the “eco review” replied to Lead Permitter Tracy Cui’s request with:



WILL \$ WIN OVER ECOLOGY?

The county can permit destruction of the wetlands by a requesting that the developer provide compensation to a mitigation bank

From: Pursley, Joseph <jpursley@kingcounty.gov>
 Sent: Wednesday, May 17, 2023 1:57 PM
 To: Cui, Tracy <Tracy.Cui@kingcounty.gov>
 Subject: RE: Routing: CDUP23-0003 Battery Storage - eco review

Tracy,
 Is this a test?

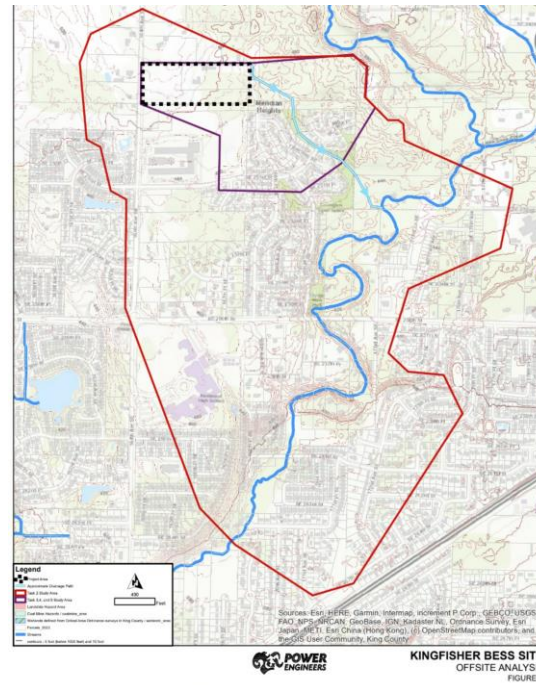
This proposed project fully impacts 10 wetlands and their buffers. I am not sure what is proposed can even be allowed through a Alteration Exception.

Maybe we can talk and figure out how to respond to the applicant.

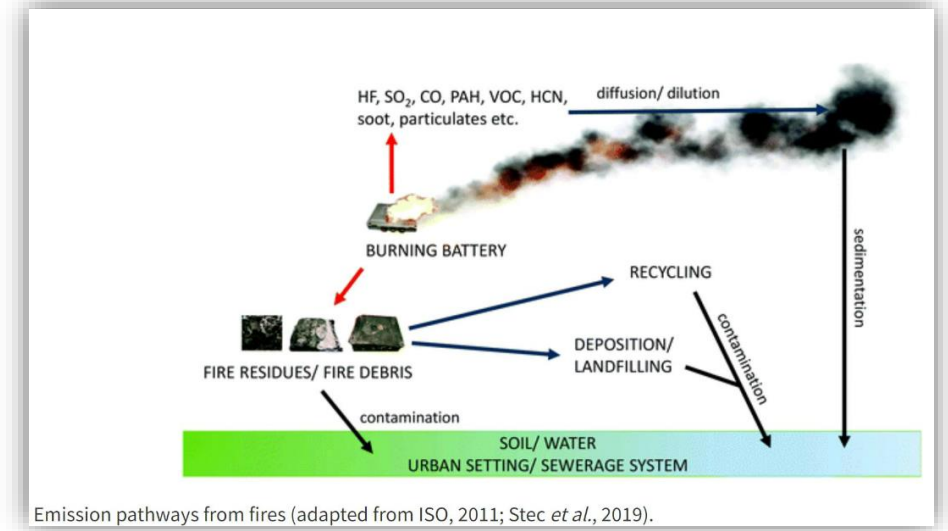
Joe

CONTAMINATES WATER

- Runoff from water treatment to cool exploded/burning battery units will contaminate well-water/aquifer/water table
- Millions of gallons of defensive runoff spray puts area at risk



Drainage maps prepared for the Project shows the run-off will drain to the east polluting Little Soos Creek, a salmon bearing stream, and all its tributaries on the way to the Green River.



WILDLIFE CORRIDOR IMPACTS

- The PGE transmission corridor where the High Voltage line will be sited is an active wildlife corridor.
- Deer, elk, coyotes, owls, raptors, all frequent this area and cross through the Project site, heading to Little Soos Creek for water.

PROPERTY VALUE DECREASE

- For those homes around this industrial site, property values will assuredly decrease!
- This reduces school funding – as they depend on property taxes

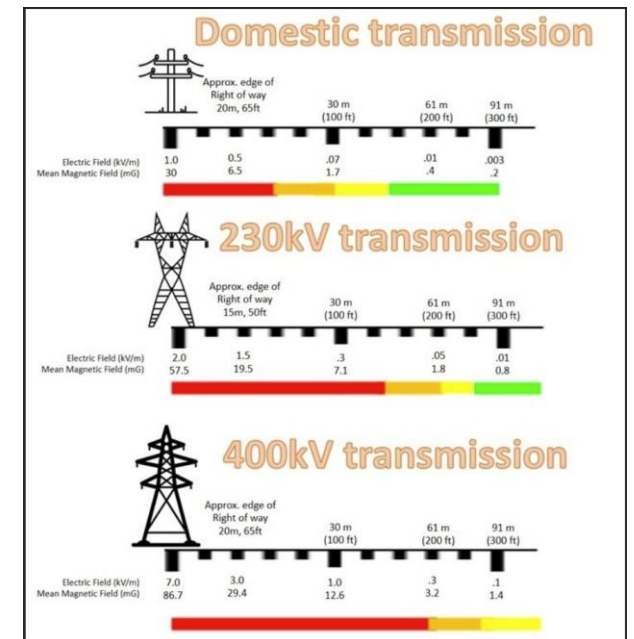


ELECTROMAGNETIC RADIATION



- Cumulative radiation from the three lines can damage DNA and cells.
- Symptom include headaches, insomnia, depression, anxiety, etc.
- Several states have residential setbacks in place for these utilities that range from 300ft to 700ft. Washington State has no setbacks.

- High voltage power lines will be installed in a 150ft wide corridor behind the Tamarack Ridge Community.
- Two lower voltage lines are currently sited in that corridor.



An aerial photograph of a large stadium with numerous rows of grey seats. The stadium is situated in a green area with trees and a track in the background. A semi-transparent green box is overlaid on the center of the image, containing white text.

**WHY IS KING COUNTY
MOTIVATED TO
PROCEED?**

Clean Energy needs to be a **PRIORITY** focus with our future in mind!

INCENTIVES FOR FASTER CLEAN ENERGY CONVERSION

But **HOW** it is handled needs to be **THOUGHTFUL** vs **RUSHED** (Or we risk exchanging 1 danger for another)

WASHINGTON CLEAN ENERGY TRANSFORMATION ACT (CETA) - 2019

- Requires WA's electric supply be free of greenhouse gas(GHG) emissions by 2045
- By 2025 – NO COAL
- By 2030 – GHG neutral standard
- By 2045 100% clean standard



2025
NO COAL
STANDARD



2030
GHG NEUTRAL
STANDARD



2045
100% CLEAN
STANDARD

KING COUNTY'S 2020 STRATEGIC CLIMATE ACTION PLAN (SCAP)

2020 SCAP Guiding Principles:

- Act with urgency and intention.
- Lead with racial justice and equity.
- Respond to community needs and priorities.
- Use and develop best available science.
- Seek systemic solutions.
- Build partnerships.
- Lead through local action.
- Prioritize health and co-benefits.
- Be transparent and accountable.



PRESSURE FROM PRIVATE ENERGY COMPANIES

- Private energy companies are highly incentivized to get projects approved before regulations are in place.
- They have powerful lobbyists, PR firms employed, and billions of dollars motivating them.



TENASKA WILL SELL TO CA, TX, ETC FOR **4X (MIN)** THE PROFIT

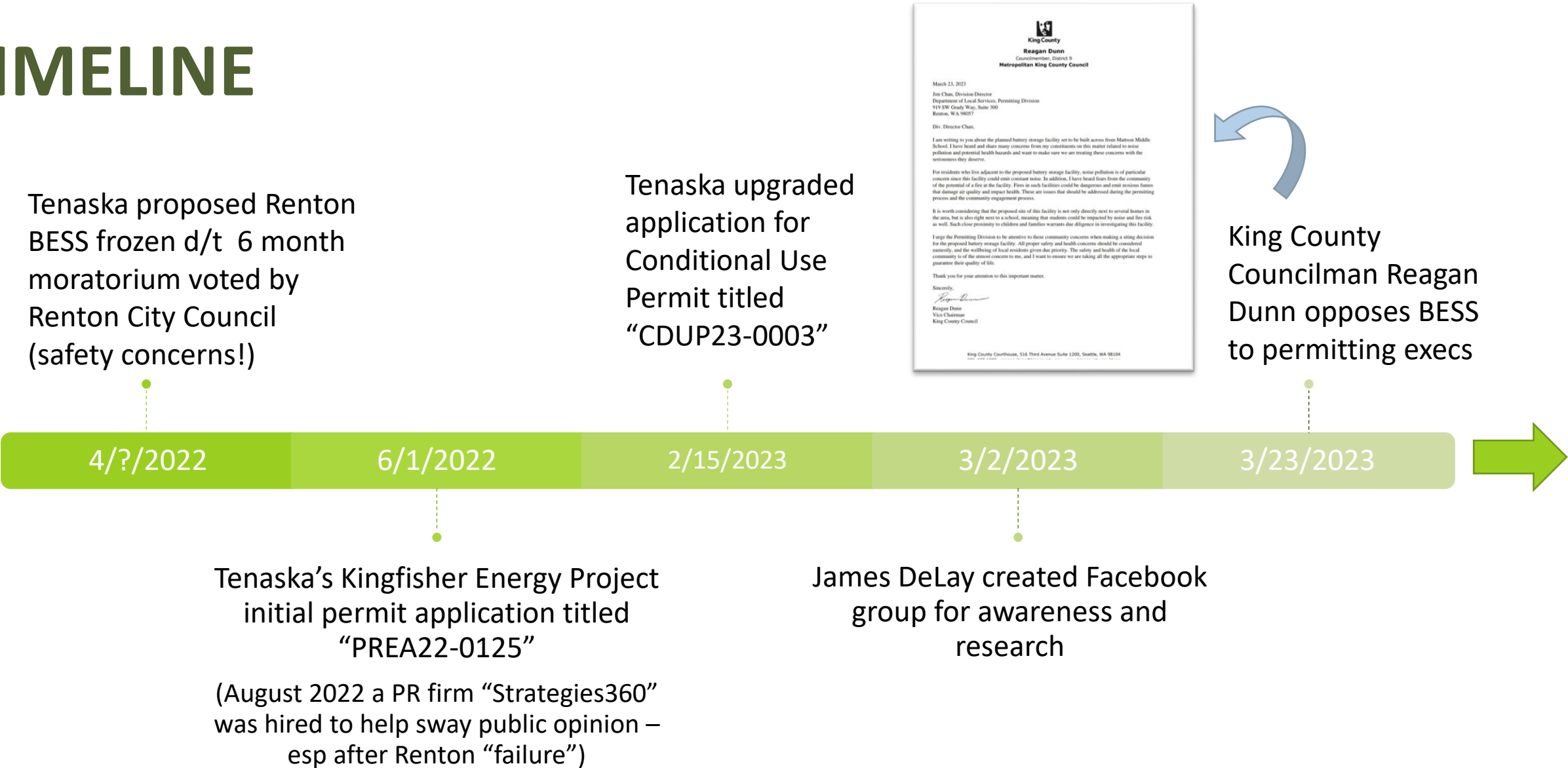
- WA energy is the cheapest in the US – we currently overproduce & export 30% of our energy to other states (hydro power esp).
- Will continue to overproduce for projected 10+ years (but will need plan in place for future)



An aerial photograph of a large stadium, likely a high school or college arena. The stadium features a large green field in the center, surrounded by a red running track. The seating area is filled with rows of grey bleachers. In the background, there are trees and other buildings, possibly part of a school campus. The text "KINGFISHER BESS RESPONSE TIMELINE" is overlaid in a bright green box in the center of the image.

**KINGFISHER BESS
RESPONSE
TIMELINE**

TIMELINE

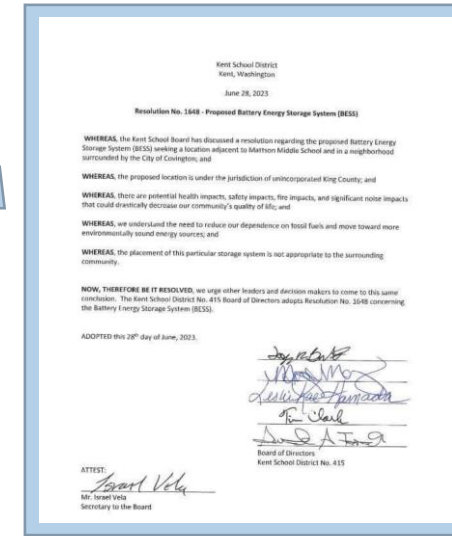


Volunteers go Door-to-Door in 2 closest housing developments by Mattson to inform of BESS & City Hall Presentation (call for Presence & Opposition!)

Volunteers go Door-to-Door to give new flyers re info on proposal & public comment period ending 6/26/23 per newspaper listing. (call for emails/comments!)
(1,740 flyers distributed!)



Kent School District Board voted to oppose the Kingfisher BESS Project



6/8-11/2023

6/13/2023

6/22-25/2023

6/26/2023

6/28/2023

7/9/2023

Tenaska presentation to Covington City Hall (per their request).

Huge turnout (most in over 10 yrs) at around 200 people



Volunteers became aware (via permit status website) that King County Permitter, Tracy Cui, noted the Conditional Use Permit "CDUP23-0003" was paused d/t "concerns on the procedural aspect of the CUP approach" & "ecological related issues"



Seattle Times article released entitled: "Big Batteries by a school? Project stirs concerns as WA seeks clean energy" by Daniel Beekman



Covington City Council sent very strongly worded opposition letter to King County:

“we have unequivocally concluded that the siting of this BESS in a residential neighborhood and near Mattson Middle School is a **grave neglect of the life and safety duty you owe** King County residents.”

???? - Need to stay vigilant re updates on permit process and possible loopholes to be attempted (Tenaska trying for “utility” exemption – FAR WORSE as less requirements). Be ready to show up at County meetings, email reps, & educate others!

New WA state law to take effect October 2023 re fire safety requirements, limits on indoor systems, construction standards, and more.

Will this protect us from this site?
Will the standards be enough??



7/13/2023

7/15-16/2023

TBD

8/22/2023

10/1/2023

Covington Days Parade & Festival:

Volunteers educated public & advertised newly created central hub website of www.movethebattery.com



August 22, 2023 Local Services & Land Use Committee hearing of King County Councilmember Sarah Perry's proposal to establish regulations around zoning, safety, and insurance requirements for BESS

Will they be stringent enough??

An aerial photograph of a school campus. In the foreground, there are rows of grey bleachers. To the right, a green athletic field with a red running track is visible. In the background, there are several school buildings and more greenery. A semi-transparent green box is overlaid on the bleachers, containing the text "CALL TO ACTION!!" in bright yellow, bold, sans-serif font.

**CALL TO
ACTION!!**



CALL TO ACTION!!

What YOU Can Do To Make An Impact



STAY INFORMED VIA LOCAL CRAFTED WEBSITE

- Built by neighbors as more concise central hub for key info & links related to this BESS site.
- Join email list – action items & FYIs to be sent (some emergent as Permit situation evolves)
- “Send us a message” if you have ideas, skills to assist, or questions

WWW.MOVETHEBATTERY.COM

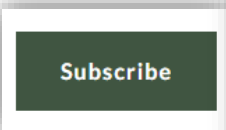
SEND US A MESSAGE

Name

Email*

Message

This site is protected by reCAPTCHA and the Google Privacy Policy and Terms of Service apply.



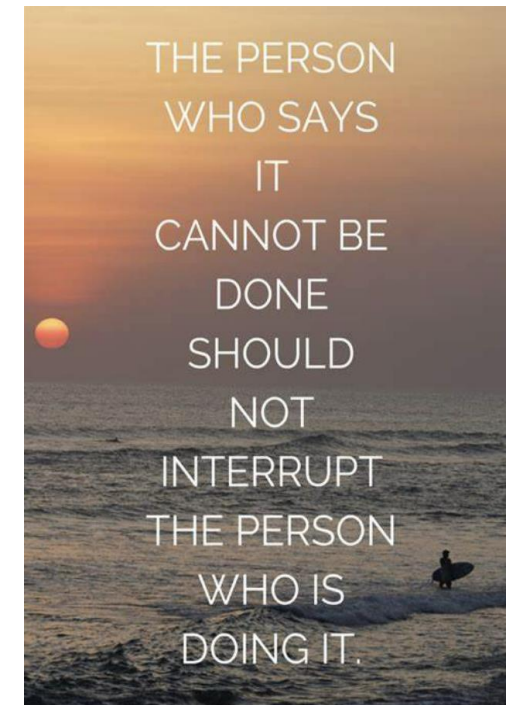
YOUR VOICE MATTERS & EMAILS MULTIPLY INTO A MOVEMENT

- Refer to www.movethebattery.com for a list of King County officials (& beyond) to email opposition/concerns
- Emails (esp during critical public comment periods) are more impactful than petitions – even if short and copy & pasted to multiple recipients
- Public Officials read & DO respond!

BE READY TO ACT

Be ready to act during the Appeal Process once/if the County approves the application for a Critical Area Alterations Exception!! This CAEX would eliminate many studies meant to protect the public & environment!

EDUCATE FRIENDS & FAMILY – AWARENESS IS KEY TO TAKING ACTION



REFERENCES

[BIG BATTERIES BY A SCHOOL? PROJECT STIRS CONCERNS AS WA SEEKS CLEAN ENERGY | THE SEATTLE TIMES](#)

7/8/2023 – Wonderfully in-depth piece about BESS's, Washington current state, and proposed site by Covington's Mattson Middle School

[COVINGTON CITY COUNCIL MEETING - JUNE 13, 2023 - YOUTUBE](#)

Tenaska/ Kingfisher presentation to Covington City Hall Recording.

[STOP THE PROPOSED COVINGTON BATTERY ENERGY STORAGE SYSTEM \(BESS\) | FACEBOOK](#)

FB opposition site filled with news articles, city public records, and information related to dangers related to this BES and it's proposed location

[FAQ | MOVE THE BATTERY](#)

Built by neighbors & designed as more concise central hub for key information and links related to this BESS site. Find current updates, Action items, and facts for easy reference.

[KINGFISHER WETLANDS DELINEATION REPORT.PDF](#)

This report describes the ten wetlands and their buffers within the site according to the applicable sections of the King County Code (KCC) Chapter 21A.24, Critical Areas.

[SITING ENERGY STORAGE - NOV 16 2022 - YOUTUBE](#)

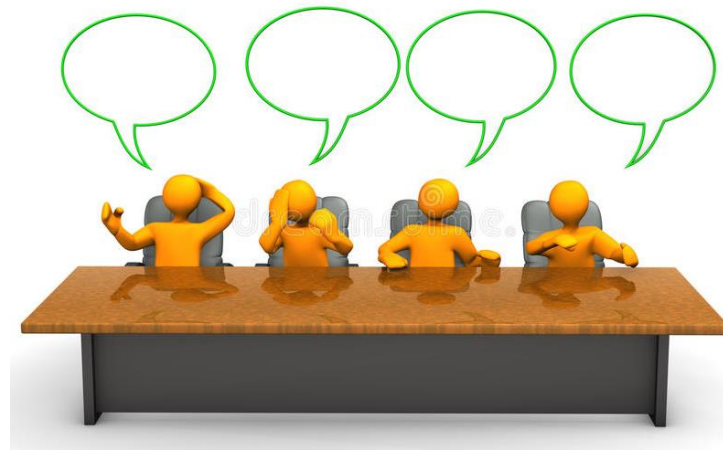
Workshop from Washington State Dept of Commerce re BESS siting and safety. (Research analyst Jeremy Twitchell from Pacific Northwest National Laboratory included speech)

[ACCELA CITIZEN ACCESS](#)

King County's permit page which allows us to follow the publicly avail timeline & details around this (and any) active or paused permit.

[BESS FAILURE EVENT DATABASE - EPRI STORAGE WIKI](#)

A public resource for documenting publicly-available data on battery energy storage failure events from around the world. All information included is available in the linked public documents.



PANEL DISCUSSION

PERMITTING DEFINITIONS (FOR REFERENCE)

Permitting Avenues for Renewable Energy Projects

EFSEC The State of Washington Energy Facility Site Evaluation Council (EFSEC or Council) provides a "one-stop" siting process for major energy facilities in the State of Washington. EFSEC coordinates all evaluation and licensing steps for siting certain energy facilities in Washington. EFSEC specifies the conditions of construction and operation. If approved, a Site Certification Agreement is issued in lieu of any other individual state or local agency permits. EFSEC also manages an environmental and safety oversight program of facility and site operations.

Conditional Use Permit (CUP) allows the county to consider a use of a property that is not routinely allowed, but can potentially be made compatible through the application of project and site-specific conditions. The CUP process also requires public notification and an opportunity for the public to comment on whether the proposal meets the criteria for approval.

Critical Area Alteration Exception. This application process allows adjustments in the application of zoning code standards related to critical area buffers to a particular property.

What is the timeline for processing a critical area alteration exception?

- Permitting staff will schedule a pre-application meeting within 30 days from the date of the request. (June 1, 2023)
- Permitting staff has 28 days from the date the application is filed to determine whether the application is complete. (TBD)
- After Permitting staff determines that the application is complete, a Notice of Application is issued. **The minimum public comment period is 21 days.**
- The process to make a final decision on a critical area alteration exception generally takes 120 days provided no appeals are filed or substantial additional information is required.

There is a 14-day appeal period whereby an aggrieved person can file an appeal together with an appeal filing fee to the [King County Hearing Examiner](#).

PERMITTING DEFINITIONS (FOR REFERENCE)

State Environmental Protection Act (SEPA) is a State of Washington policy that requires state and local agencies to consider the likely environmental consequences of a proposal before approving or denying the proposal.

Categorical Exemptions. Certain types of proposals are automatically exempt from the threshold determination and EIS preparation because they are a size or type unlikely to cause a significant adverse environmental impact.

When do categorical exemptions not apply? proposals involving lands covered by water; projects requiring a license to discharge to the air or water; or projects requiring a rezone. A city or county may also eliminate some exemptions if the project is located within a designated critical area.

NOTE: Representative Sean Penwell cannot comment on safety record of BESS sites... can only speak to emergency response process

PUGET SOUND REGIONAL FIRE AUTHORITY



China 2018
BESS fire

E2NEWS .COM



FINAL Q&A

REMINDER: CLEAN ENERGY IS VITAL FOR OUR FUTURE.

But this massive industrial battery sites near a school and dense communities is a disregard for public safety!



KNOWLEDGE IS POWER, & UNITY
IS STRENGTH

