

FOR LEASE

5085 Peachtree Road, Suite B

CHAMBLEE, GA 30341



Building Size

1,320 Square Feet

Rental Rate:

**\$2,000.00 per month
\$18.00 per Sq. Ft.**

Contact

Howard A. Perling

PERLING AND ASSOCIATES, INC.

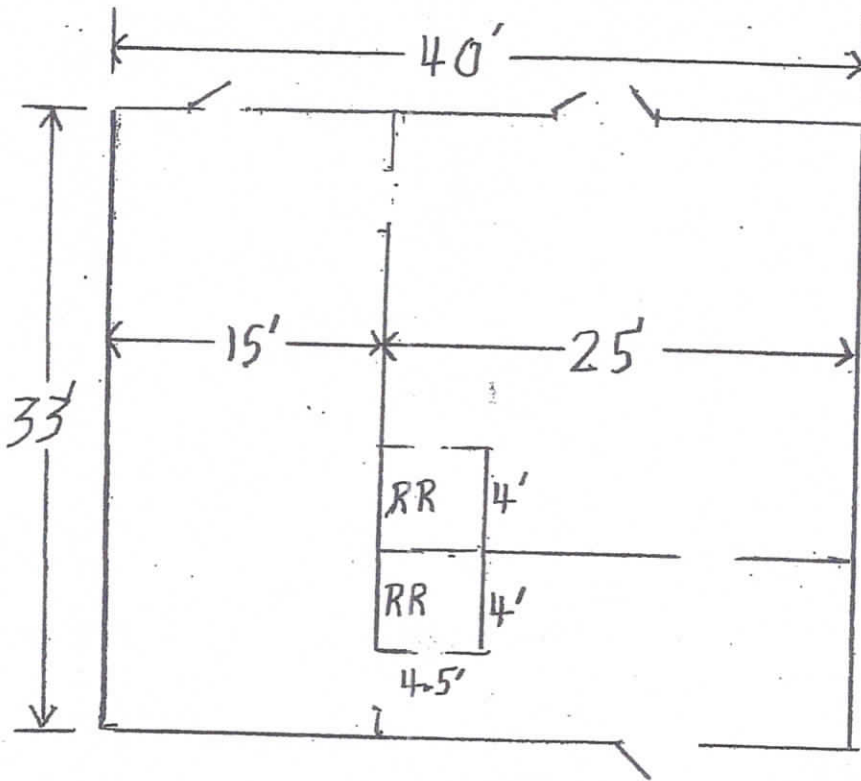
**333 Sandy Springs Cir., NE, Suite 106
Atlanta, Georgia 30328-3833**

Phone (404) 873-3251

Fax (404) 873-0400

Hperling@perlingassoc.com

The information contained herein has been obtained from reliable sources and we have no reason to doubt the accuracy of such information, however, no warranty or guarantee, either expressed or implied, is made with respect to the accuracy thereof. All such information is submitted subject to errors, omissions, changes in conditions, prior sale, lease or withdrawal from market without notice. All information contained herein should be verified to the satisfaction of the person relying thereon. Unless noted to the contrary, the broker represents the seller in the transaction.



5085 B PEACHTREE RD.

Street Map Plus Report

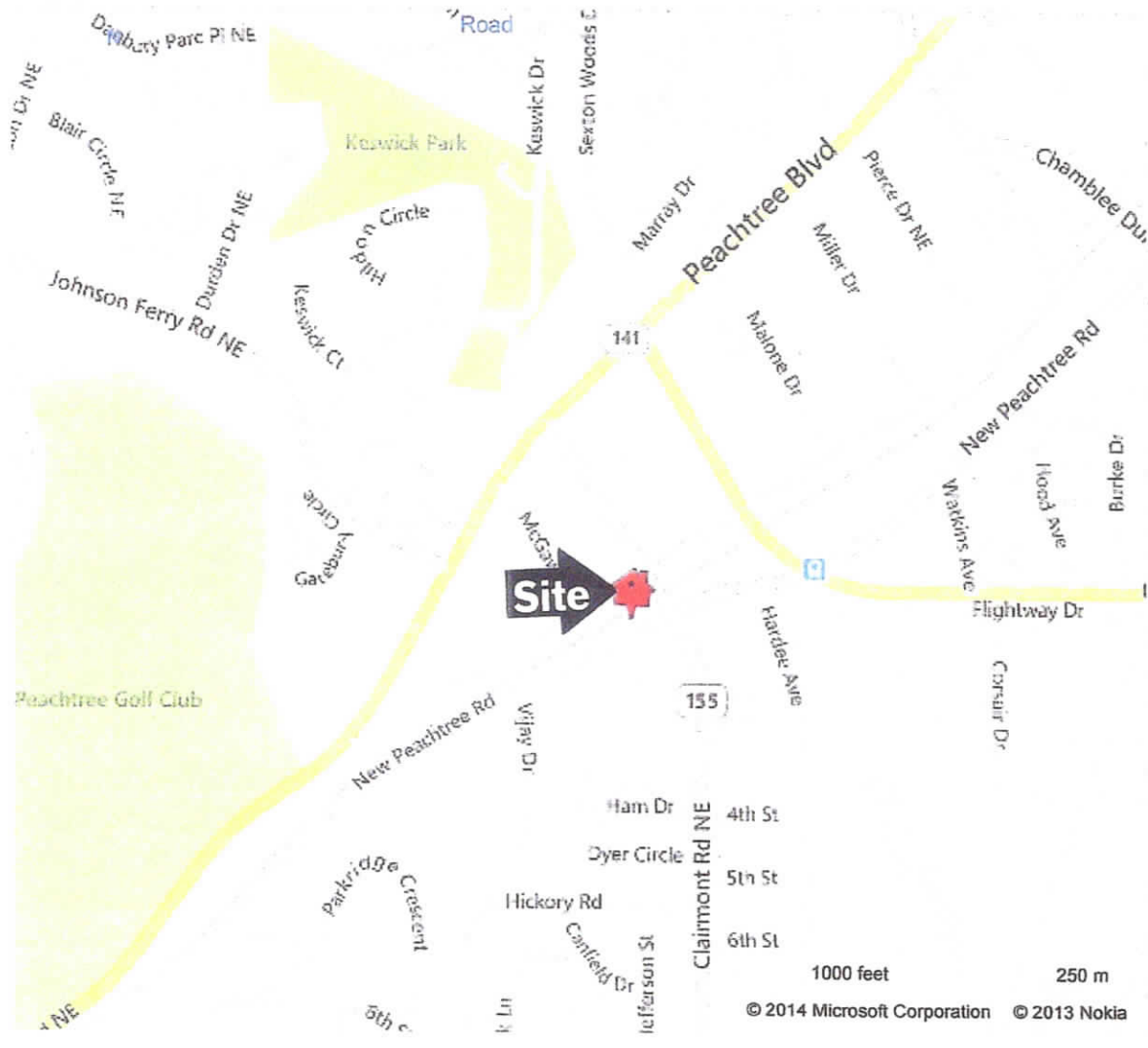
For Property Located At

5077 PEACHTREE RD, CHAMBLEE, GA 30341-3126



CoreLogic

RealQuest Professional



 = Exact location of subject may vary by up to 300 feet