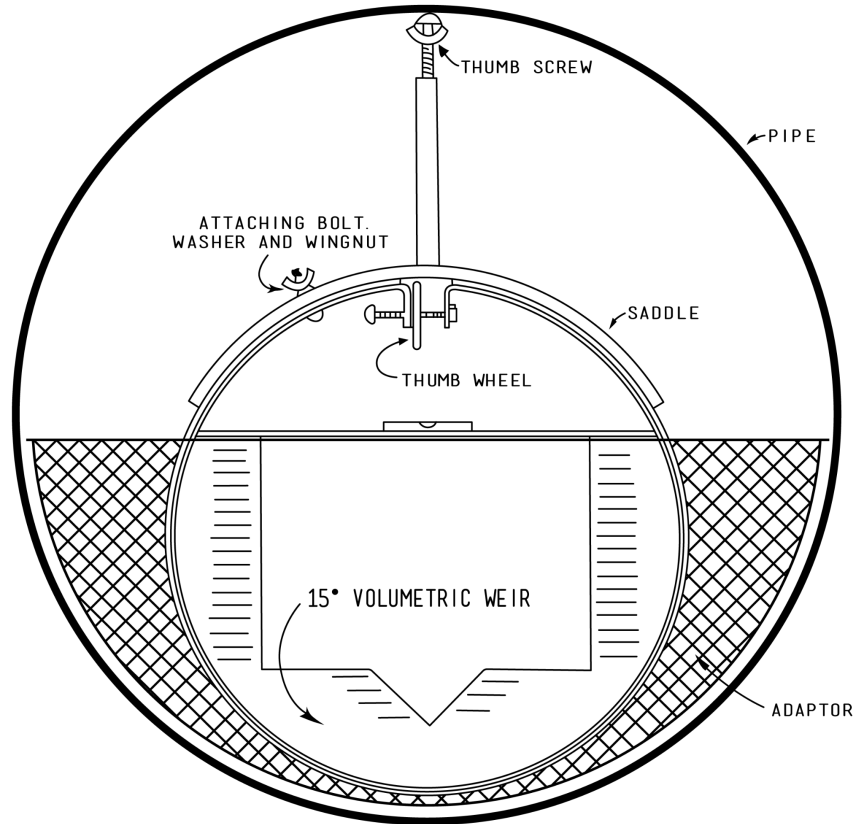


# The-Mar Company



## INSTALLATION OF 15" VOLUMETRIC WEIR WITH FIBERGLASS or ALUMINUM ADAPTOR

Prior to installation, interior edge of incoming pipe should be cleaned of sediment and foreign matter to assure seal of gasket.

Attach saddle assembly to weir by inserting 1" bolt up through tapped hole in weir.

Tighten, then place saddle assembly on top of weir with bolt extending through hole in saddle. Place washer and wingnut on bolt and tighten moderately until saddle assembly does not wobble. **Do NOT fully tighten. Doing so will flatten neoprene gasket and is not required.**

Insert weir assembly into adaptor. Secure by turning thumbwheel to left and finger tighten.

Insert entire assembly into incoming pipe about 1". Adjust for leveling, press down and turn thumb screw to right, until secure.