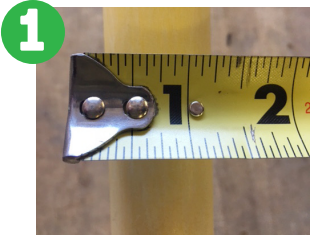


INSTALLATION INSTRUCTIONS

How to install a R.E.A.C.H. on your existing pike pole

Included in retrofit kit: (1) Aluminum sleeve (3) Roll pins (1) Barrel nut



Measure your pole. The handle and sleeve are specifically engineered for use on a standard non-tapered 1.25" pole. (a fire industry standard)

A



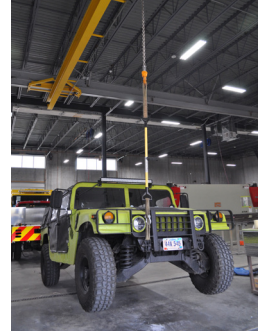
Remove the pike head or the D-ring handle by removing the roll pins.

B



OR

Choose the desired location for the R.E.A.C.H. and cut the pike pole at that spot.



Don't worry about any loss of strength. When installed with the aluminum sleeve, our poles can lift a Hummer!

2



Slide the sleeve into place

3



Decide the orientation of the handle (the position you would like to use it when perpendicular to the pole) before drilling

4



Use a 1/4 inch drill bit to drill completely drill through the pole through the 4 holes in the sleeve.

5



Insert the 3 supplied roll pins, leaving the corresponding hole open so the R.E.A.C.H. can wrap around the sleeve when in the stored position.

6



Install the R.E.A.C.H. with the supplied barrel nut and stainless screw.

7



To customize the fit of the R.E.A.C.H. between the sleeve and the handle when wrapped around the shaft, a small amount of filing may be required. The R.E.A.C.H. will snap when fully engaged open and closed.