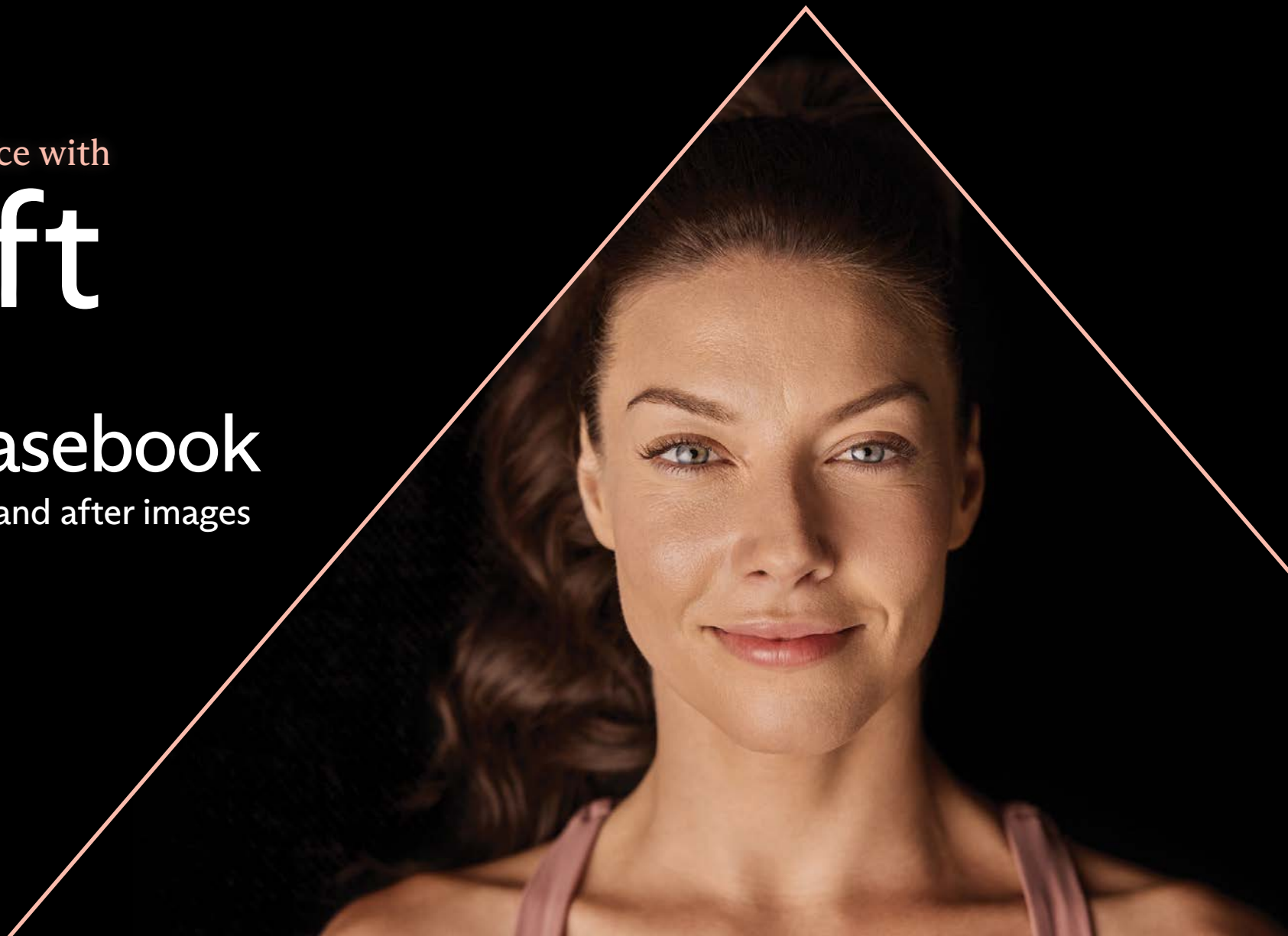


Elevate your practice with

triLift

## Clinical Casebook

Collection of before and after images



[LUMENIS.COM/TRILIFT](https://lumenis.com/trilift)

**LUMENIS**

BeautyTech For Life

# Give your face a triLift

There's much more to aging than what we see on the surface.

Our facial muscles weaken, and sag and the loss of that structure makes us look old.

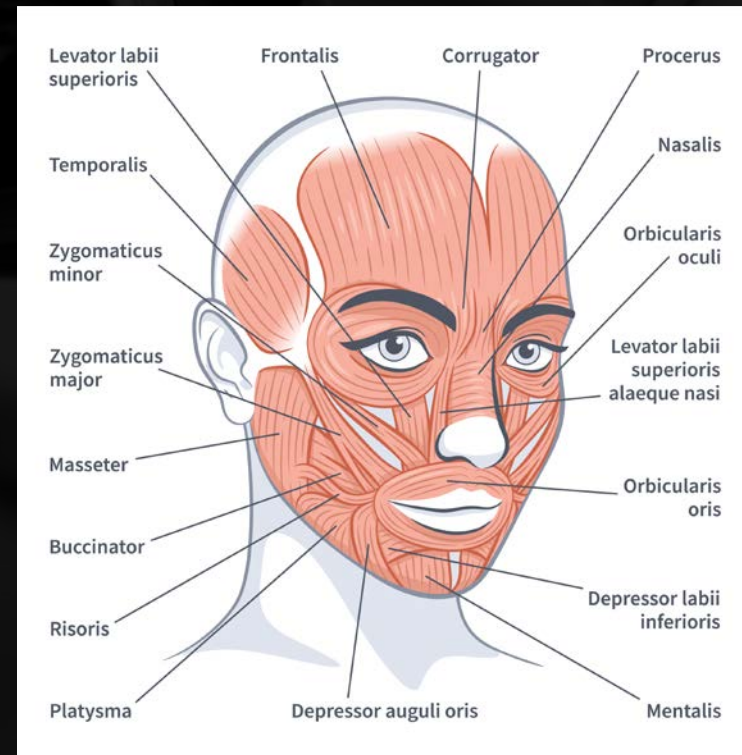
Now, thanks to triLift, you're able to contour your face to a youthful and lifted appearance, achieving an effect similar to a face lift, by targeting the muscles in the face.

It is an invitation to love what you see in the mirror by rejuvenating and enhancing your facial features to their best. With a combination of effective technologies, triLift activates the natural regeneration processes of the facial features.

triLift tones the muscles for a lifted and rejuvenated look, resurfaces the skin for a smoothed texture, and plumps the underlying cell structure by regenerating collagen and elastin(\*). The result is an immediately\*\* visible face lift like effect that is safe, pleasant, quick, and improves over time with every additional treatment session.

\*Haim Kaplan, Andrea Gat, Clinical and histopathological results following TriPollar™ radiofrequency skin treatments Journal of Cosmetic and Laser Therapy 2009; 11: 78-84 DOI: 10.1080/14764170902846227

\*\*A course of 4-6 weekly treatments is recommended





In house collection



Baseline



After 1 treatment

triLift treatment protocol

[LUMENIS.COM/TRILIFT](https://lumenis.com/trilift)

**triLift**  
BY LUMENIS



Courtesy of Travis J. Laverne, PA-C



Baseline



After 1 treatment

triLift treatment protocol

[LUMENIS.COM/TRILIFT](https://lumenis.com/trilift)

**triLift**  
BY LUMENIS





Courtesy of Travis J. Laverne, PA-C



Baseline



After 1 treatment

triLift treatment protocol

[LUMENIS.COM/TRILIFT](https://lumenis.com/trilift)

**triLift**  
BY LUMENIS



In house collection



Baseline



After 1 treatment

Lift Mode treatment

[LUMENIS.COM/TRILIFT](https://lumenis.com/trilift)

**triLift**  
BY LUMENIS



Courtesy of Rescu Wellness



Baseline



3 weeks after first treatment

Lift Mode treatment

[LUMENIS.COM/TRILIFT](https://lumenis.com/trilift)

**triLift**  
BY LUMENIS



Courtesy of Travis J. Laverne, PA-C



Baseline



After 2 treatments

triLift treatment protocol

[LUMENIS.COM/TRILIFT](https://lumenis.com/trilift)

**triLift**  
BY LUMENIS





Baseline



After 2 treatments

triLift treatment protocol

In house collection

[LUMENIS.COM/TRILIFT](https://lumenis.com/trilift)

**triLift**  
BY LUMENIS



Courtesy of Rescu Wellness



Baseline



2 weeks after 2 treatments

triLift treatment protocol

[LUMENIS.COM/TRILIFT](https://lumenis.com/trilift)

**triLift**  
BY LUMENIS



In house collection



Baseline



After 3 treatments

triLift treatment protocol

[LUMENIS.COM/TRILIFT](https://lumenis.com/trilift)

triLift  
BY LUMENIS



In house collection



Baseline



After 3 treatments

triLift treatment protocol

[LUMENIS.COM/TRILIFT](https://lumenis.com/trilift)

**triLift**  
BY LUMENIS





In house collection



Baseline



After 3 treatments

triLift treatment protocol

[LUMENIS.COM/TRILIFT](https://lumenis.com/trilift)

**triLift**  
BY LUMENIS



In house collection



Baseline



After 3 treatments

triLift treatment protocol

[LUMENIS.COM/TRILIFT](https://lumenis.com/trilift)

**triLift**  
BY LUMENIS



Courtesy of Travis J. Laverne, PA-C



Baseline



After 3 treatments

triLift treatment protocol

[LUMENIS.COM/TRILIFT](https://lumenis.com/trilift)

**triLift**  
BY LUMENIS



In house collection



Baseline



After 3 treatments

triLift treatment protocol

[LUMENIS.COM/TRILIFT](https://lumenis.com/trilift)

triLift  
BY LUMENIS





Courtesy of Manhattan Face and Eye



Baseline



3 weeks after 3 treatments

triLift treatment protocol

[LUMENIS.COM/TRILIFT](https://lumenis.com/trilift)

**triLift**  
BY LUMENIS



Courtesy of Travis J. Laverne, PA-C



Baseline



After 4 treatments

triLift treatment protocol

[LUMENIS.COM/TRILIFT](https://lumenis.com/trilift)

**triLift**  
BY LUMENIS



Courtesy of Hamilton Dermatology



Baseline



After 5 treatments

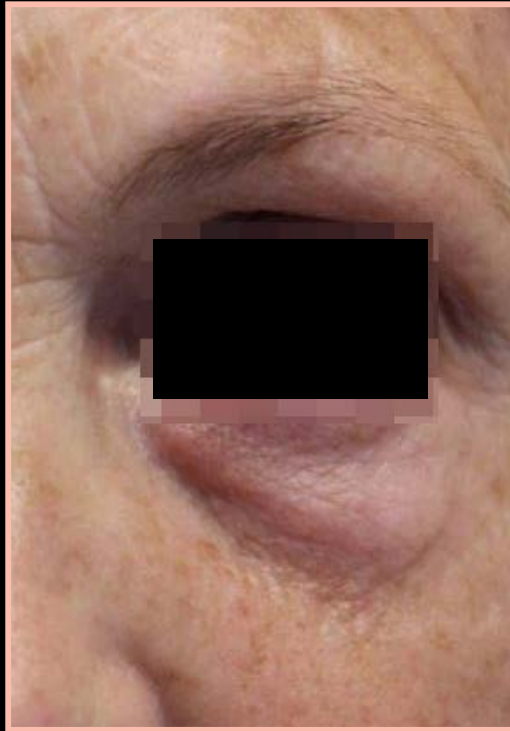
Lift Mode treatment

[LUMENIS.COM/TRILIFT](https://lumenis.com/trilift)

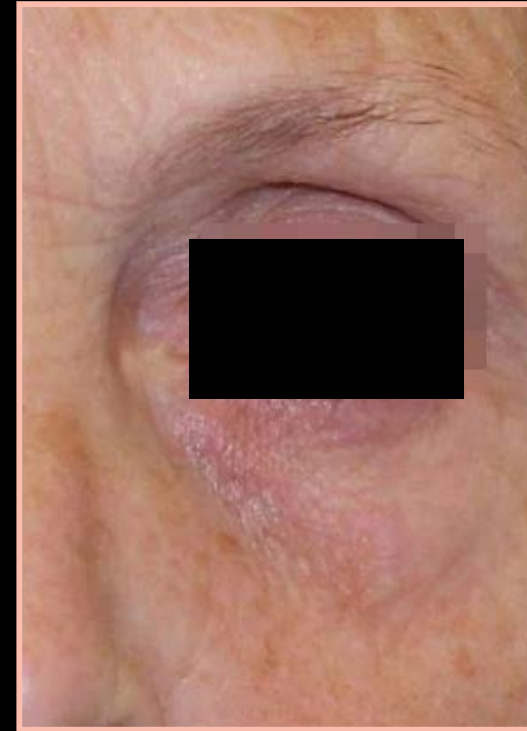
**triLift**  
BY LUMENIS



In house collection



Baseline



After 6 treatments

triLift treatment protocol

[LUMENIS.COM/TRILIFT](https://lumenis.com/trilift)

**triLift**  
BY LUMENIS





Baseline



After 6 treatments

Lift Mode treatment

In house collection

[LUMENIS.COM/TRILIFT](https://lumenis.com/trilift)

**triLift**  
BY LUMENIS



In house collection



Baseline



After 6 treatments

triLift treatment protocol

[LUMENIS.COM/TRILIFT](https://lumenis.com/trilift)

**triLift**  
BY LUMENIS



Courtesy of Travis J. Laverne, PA-C



Baseline



5 months after 4 treatments

triLift treatment protocol

[LUMENIS.COM/TRILIFT](https://lumenis.com/trilift)

**triLift**  
BY LUMENIS



Courtesy of Travis J. Laverne, PA-C



Baseline



5 Sessions – 3 months after  
last treatment

triLift treatment protocol

[LUMENIS.COM/TRILIFT](https://lumenis.com/trilift)

**triLift**  
BY LUMENIS





Courtesy of Travis J. Laverne, PA-C



Baseline



5 months after 4 treatments

triLift treatment protocol

[LUMENIS.COM/TRILIFT](https://lumenis.com/trilift)

**triLift**  
BY LUMENIS



Courtesy of Travis J. Laverne, PA-C.



Baseline



5 months after 4 treatments

triLift treatment protocol

[LUMENIS.COM/TRILIFT](https://lumenis.com/trilift)

**triLift**  
BY LUMENIS



Courtesy of Travis J. Laverne, PA-C.



Baseline



5 Sessions – 3 months after  
last treatment

triLift treatment protocol

[LUMENIS.COM/TRILIFT](https://lumenis.com/trilift)

**triLift**  
BY LUMENIS



Courtesy of Travis J. Laverne, PA-C.



Baseline



3 months after 5 treatments

triLift treatment protocol

[LUMENIS.COM/TRILIFT](https://lumenis.com/trilift)

**triLift**  
BY LUMENIS

# Now At MerLeaux Aesthetic Solutions and Refresh Wellness & Aesthetics

Elysian Spa  
116 W. Scenic Drive  
Pass Christian, MS

For information on Lumenis' products, please contact us at:  
<http://www.lumenis.com/Contact>  
or at our direct offices.



#### Lumenis Be Ltd.

Yokneam Industrial Park,  
Hakidma Street 9,  
P.O.B. #426  
Yokneam 2069236, ISRAEL  
T: +972 4 959 9000

#### AMERICAS

San Jose, CA, USA  
T: +1 408 764 3000, +1 877 586 3647  
F: +1 408 764 3999



#### Pollogen Ltd.,

6 Kaufman St., P.O.Box #50320  
Tel Aviv 6801298, Israel

The triLift™ system is intended for dermatological procedures requiring ablation and resurfacing of the skin when using triFX™ Energy (Applicator VO), as well as intended for use in dermatologic and general surgical procedures for the non-invasive treatment of mild to moderate facial wrinkles and rhytides when using TriPollar® RF Energy (Applicators 1-3). The triLift with the DMSt™ mode is intended for muscle conditioning to stimulate healthy muscles. triLift with the DMSt™ mode is not intended to be used in conjunction with therapy or treatment of medical diseases or medical conditions of any kind. triLift is intended to be operated by a trained professional who is present to monitor treatment

triLift is contraindicated for patients with pacemaker, defibrillator, or any implanted electronic device, metal implants in the treatment area. Side effects may appear either at the time of treatment or shortly after. Side effects may include any of the following: prolonged or significant pain damage to natural skin texture (blister, burn), excessive skin redness (erythema), excessive swelling (edema), fragile skin bruising, excessive itching, change of pigmentation (hyper-pigmentation or hypopigmentation), scarring, transient skin break-out such as acne and pimples. For complete list of contraindications, please refer to the User Manual.

[LUMENIS.COM/TRILIFT](http://LUMENIS.COM/TRILIFT)

© 2022 All Rights Reserved. The Lumenis Be Group of Companies PB-00043550 Rev C

**triLift**  
BY LUMENIS