

InKorr

This product is represented in Australia, New Zealand, and PNG by:

InKorr Pty Ltd

Address: Unit 8, 1470 Ferntree Gully Road,
Knoxfield VIC 3180, Australia
Email: inkorr.service@inkorr.com.au
General: +61 (0) 413 996 890 (Makarios Wong)
Service: +61 (0) 478 800 003 (Shane Halliwell)

Contact InKorr Pty Ltd for:



Heat Exchangers

- Shell & Tube Heat Exchangers
- Gasketed Plate Heat Exchangers
- Brazed Plate Heat Exchangers
- Crossflow Welded Plate Heat Exchangers
- Plate & Shell Heat Exchangers
- Non Metallic Heat Exchangers
- Corrugated Tube Heat Exchangers
- Spiral Heat Exchangers
- Air-Cooled Heat Exchangers



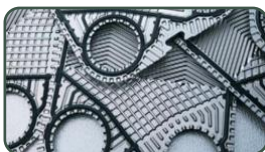
Vessels, Columns, and Equipment manufactured from:

- Exotic Alloys (Ta, Zr, Ti)
- Graphite and Silicon Carbide
- PTFE Lining



Plastic Lined Valves and Piping

- PTFE
- PVDF
- PP
- and many more!



Servicing and reburishment of heat exchangers!

- Plate cleaning
- NDE for crack testing
- Spare parts, both OEM and aftermarket



BrazePak™ Brazed Plate Heat Exchangers

EFFICIENT HEAT TRANSFER. COMPACT DESIGN.

Standard **Xchange**
a xylem brand

BRAZEPAK™ HIGH PERFORMANCE BRAZED PLATE HEAT EXCHANGERS



High performance.

BrazePak™ brazed plate heat exchangers offer the highest level of thermal efficiency and durability in a compact, low-cost unit.

Compact design.

The corrugated plate design provides very high heat transfer coefficients, resulting in a smaller surface area. This makes the BrazePak™ an excellent choice; especially where space is a consideration.

Solid self-contained unit.

Thin corrugated stainless steel plates are vacuum brazed together to form a very durable, integral piece that can withstand both high pressure and high temperature.

Numerous applications.

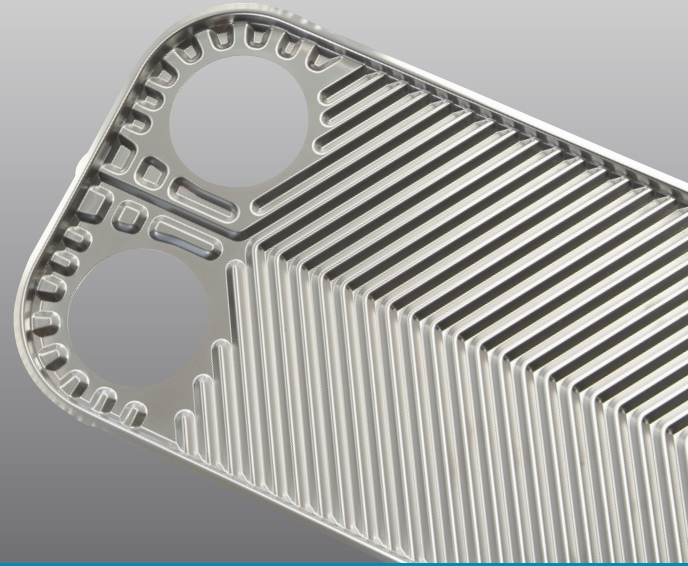
BrazePak™ units are ideal as refrigerant condensers and evaporators, as oil coolers for engines and machinery, and in many other industrial applications.

THERMAL PERFORMANCE

Standard Xchange unique heat transfer plate designs provide high rates of heat transfer requiring less surface area than conventional shell and tube heat exchangers.

Compare BrazePak™ with conventional shell and tube units:

- One-sixth the size
- One-fifth the weight
- Uses only one-eighth the liquid
- Requires one-third to one-fifth the surface area



DESIGN PERFORMANCE

MECHANICAL DESIGN:

Standard design pressures up to 435 psig at maximum design temperature of 450°F
 Custom designs to pressures of 1000 psig.
 Minimum design temperature to -310°F

CONSTRUCTION CODES:

Available codes include; UL, CRN, ASME Sec.VIII Div.1 "U" stamp, ASME Sec.III "N" stamp, Pressure Equipment Directive (97/23EC), China ML, Korean KGS, Brazilian NR-13.

MATERIALS:

Stainless Steel 316L plates.
 Copper or Nickel braze material.

PERFORMANCE:

Single Wall and
 Double Wall Options

CONNECTIONS:

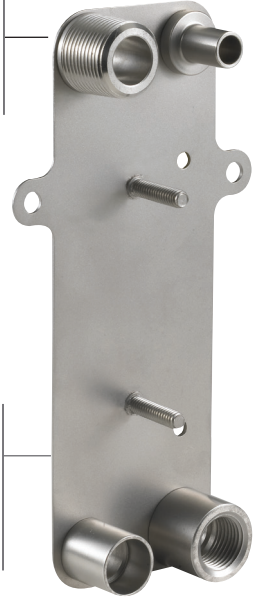
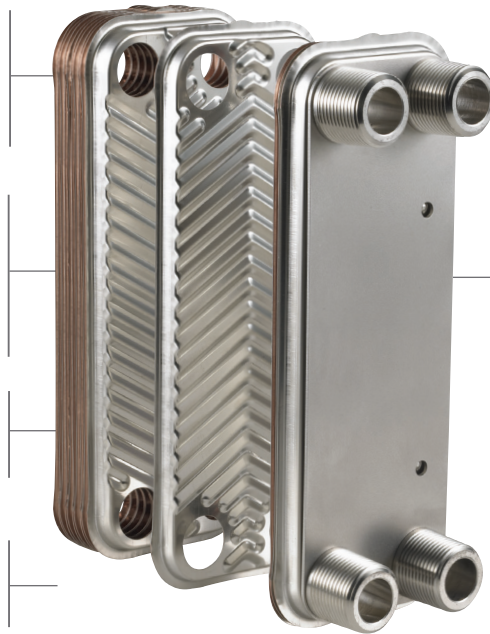
From 1/4 inch to 4 inch. Standard connection options include NPT, SAE, Flanged and Sweat.
 Custom connections available.

CAPACITY:

Up to 800 GPM and
 1100 Sq.ft. of surface area.

MOUNTING:

Reduce mounting costs with optional threaded studs or integral mounting bracket.
 Custom mounting options available.

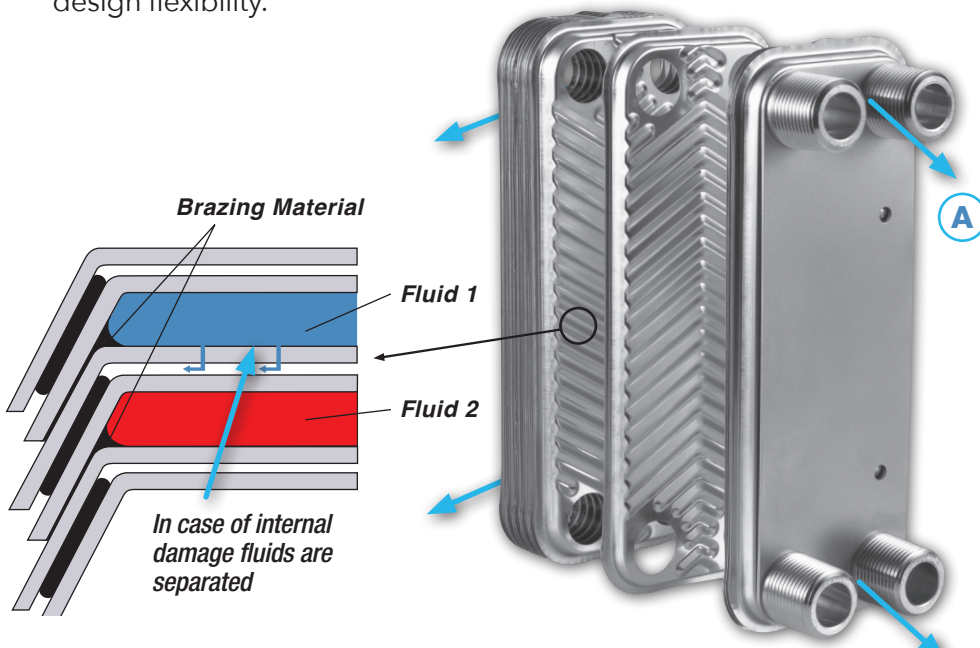


BRAZEPAK™ BPDW DOUBLE-WALL

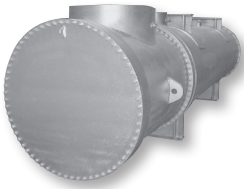
BrazePak™ BPDW Double-Wall brazed plate heat exchangers offer the highest level of leak protection, safety, thermal efficiency and durability in a compact, low cost unit. Standard Xchange advanced lean manufacturing process provides fast deliveries with maximum design flexibility.

BRAZEPAK™ BPDW DOUBLE-WALL PROVIDES:

- True double-wall construction, including port regions
- Double-wall plate design with unique air vent leak paths
- Complete peripheral braze for additional strength
- Four dedicated leak ports for quick and easy leak detection (A)
- Excellent performance for domestic water applications
- Dependable protection of fresh water streams for cooling of oils and refrigerants



MODELS OF EFFICIENCY.



CENTURY SERIES®

Engineered/
customized heat
exchangers for
process and other
heating/cooling
applications.



BRAZEPAK™

Brazed plate
heat exchanger.



PLATEFLOW®

Gasketed plate
& frame heat
exchanger.



AIREX® AND FANEX®

Air/oil, air/air,
or air/water
heat exchangers.



PRE-ENGINEERED SERIES

BCF®/SSCF®/
SX2000®/B300®
Pre-engineered
shell and tube
heat exchanger.

Standard Xchange
a xylem brand

FOR MORE INFORMATION, PLEASE CONTACT:

Standard Xchange
175 Standard Parkway • Cheektowaga, NY 14227
Tel +1.800.281.4111 • Fax +1.716.897.1777
www.standard-xchange.com