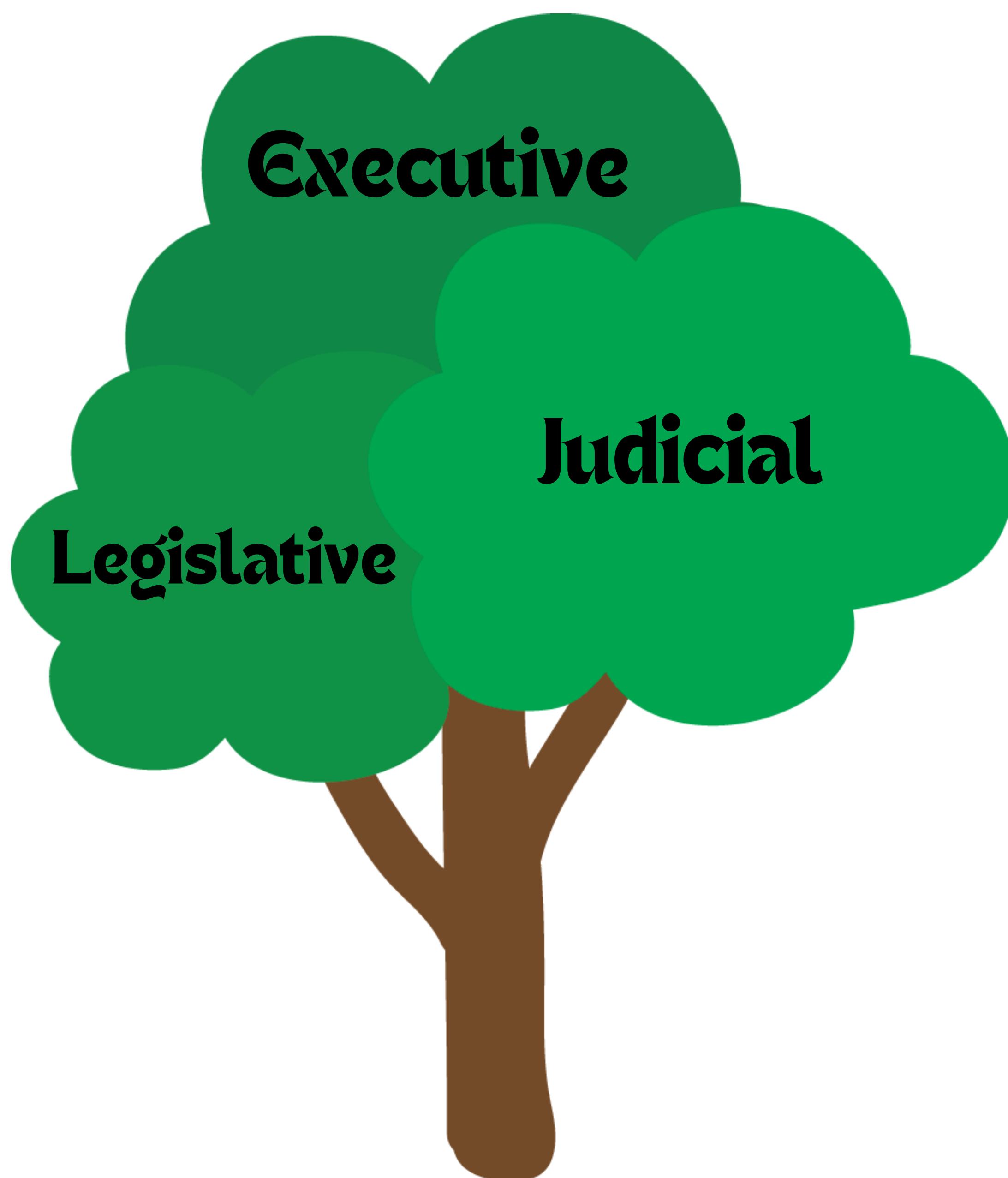


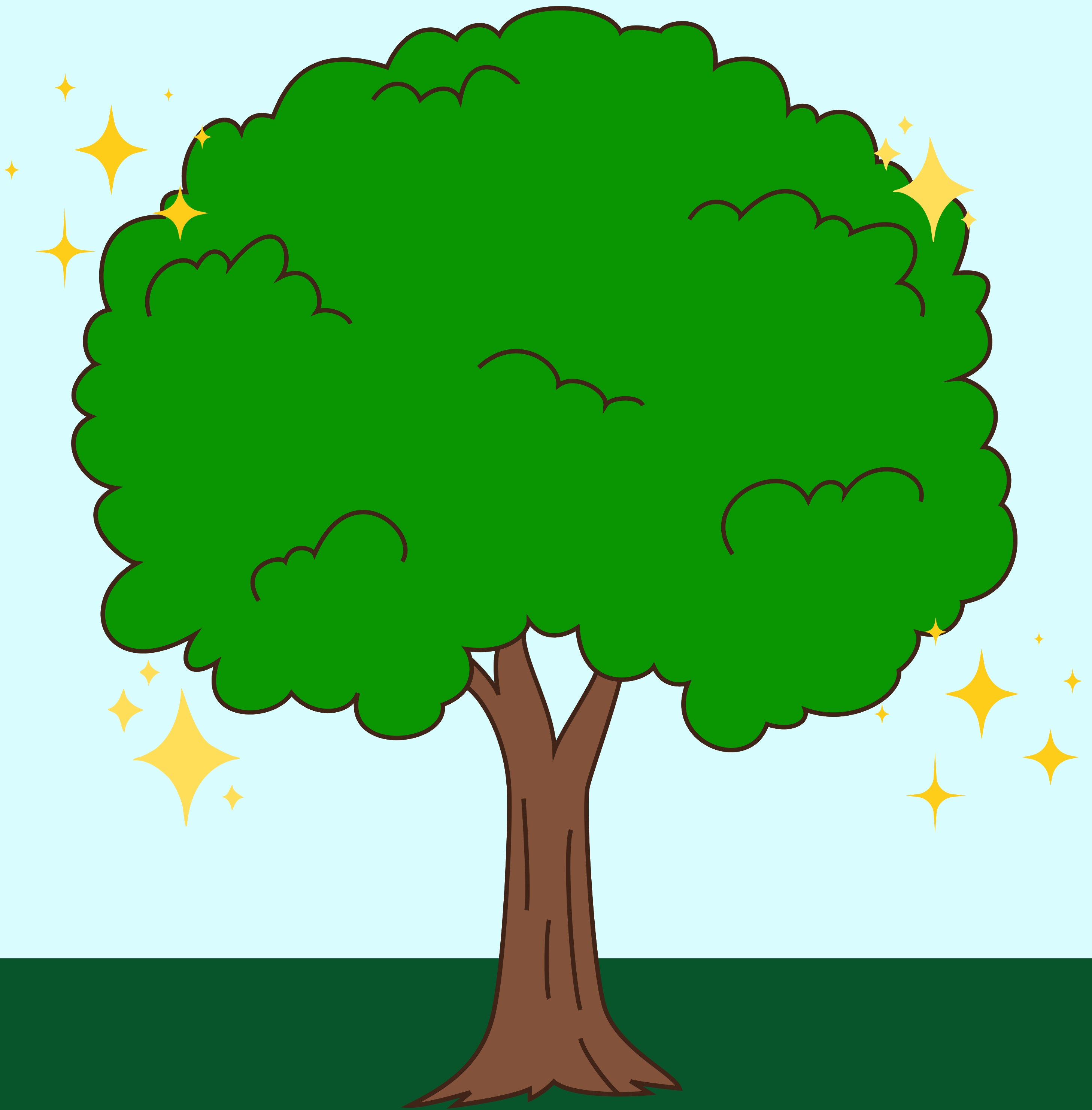
# The 3 Branches of Government

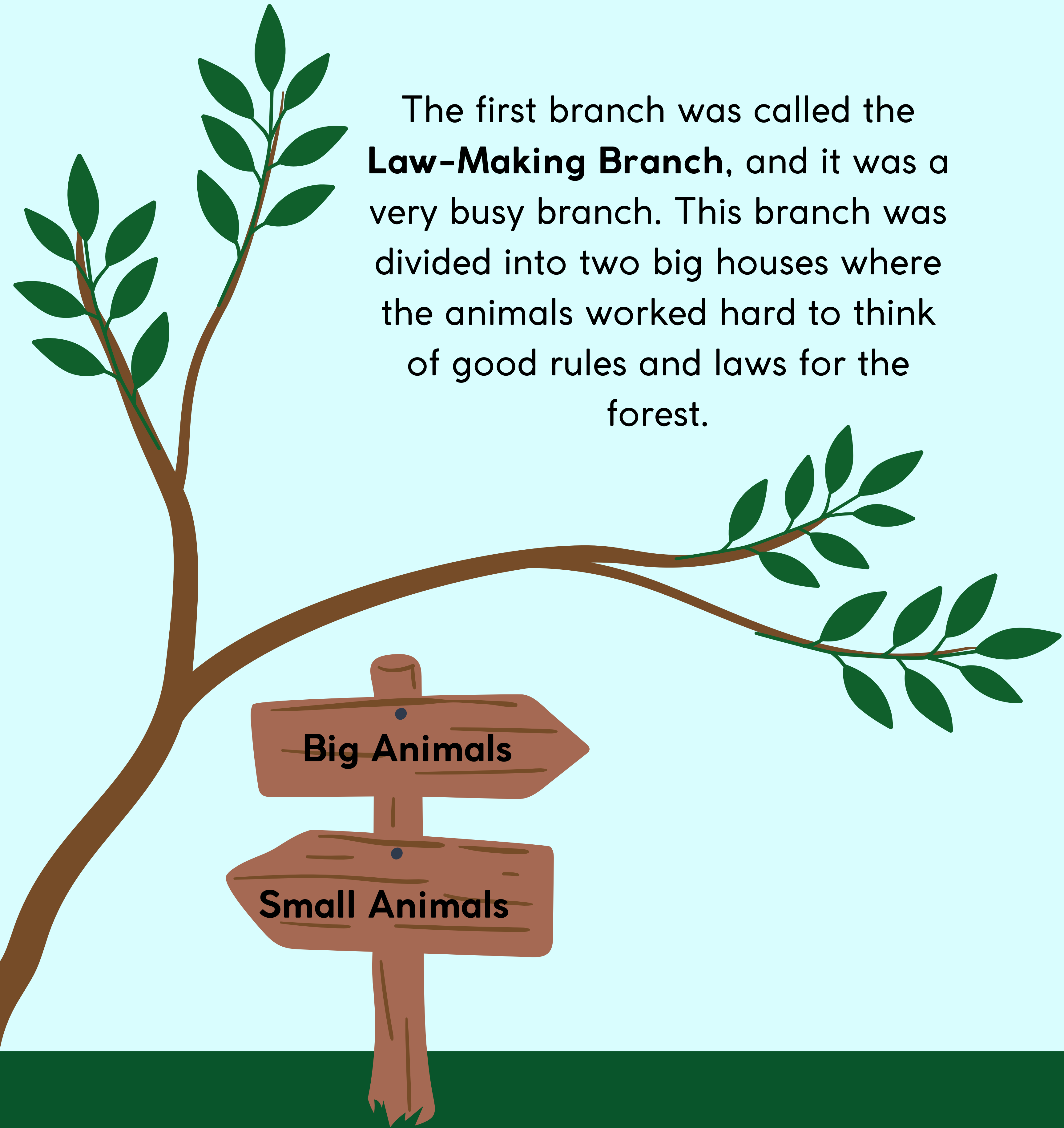
THE STORY OF THE BIG TREE WITH  
THREE STRONG BRANCHES



**Civic Scholars Club**

Once upon a time in a magical forest, there stood a Big Tree that was very special. This Big Tree wasn't just any tree—it had three strong branches that helped keep the entire forest *peaceful, safe, and happy*. Each branch had its own job, and inside each branch lived different groups of animals who worked together to make the forest a wonderful place to live.





The first branch was called the **Law-Making Branch**, and it was a very busy branch. This branch was divided into two big houses where the animals worked hard to think of good rules and laws for the forest.

Big Animals

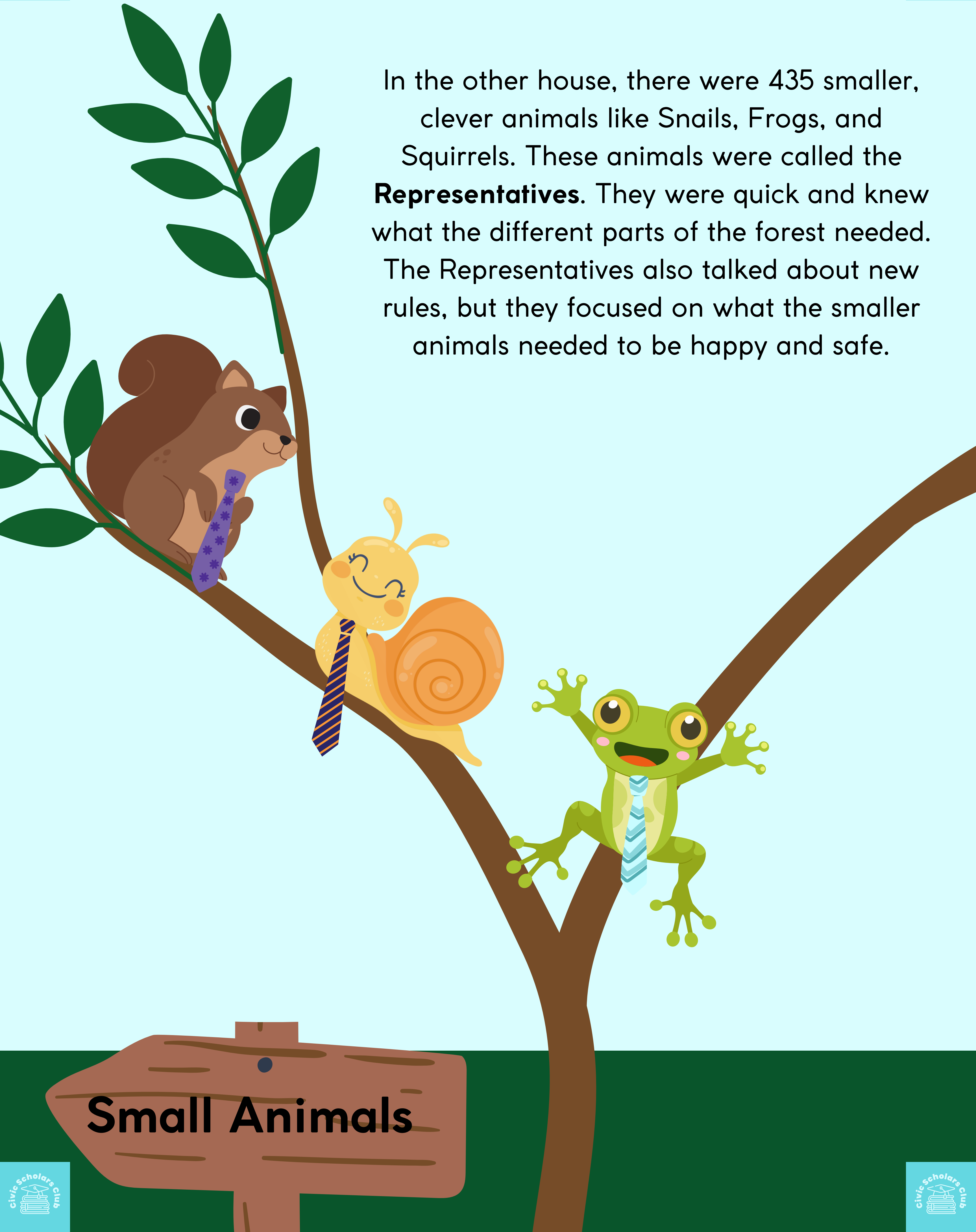
Small Animals

In this house, there were 100 big, wise animals like Elephants, Bears, and Giraffes. There are 2 animals per each community in the forest. These animals were called the **Senators**. Because they were strong and tall, they could see far and think about what was best for everyone in the forest. They talked about new ideas for rules and made sure these rules were fair for all the animals, both big and small.



**Big Animals**

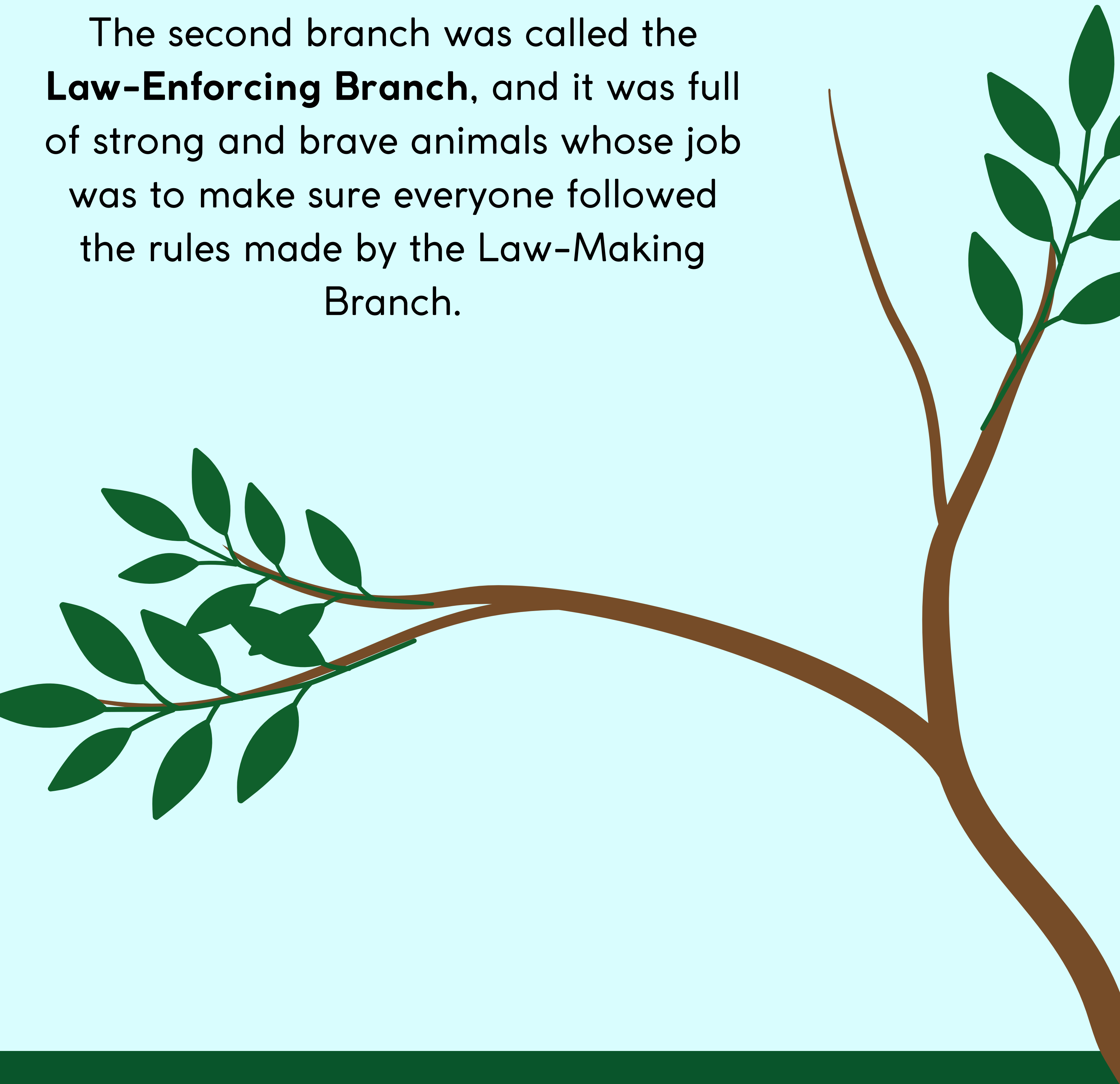
In the other house, there were 435 smaller, clever animals like Snails, Frogs, and Squirrels. These animals were called the **Representatives**. They were quick and knew what the different parts of the forest needed. The Representatives also talked about new rules, but they focused on what the smaller animals needed to be happy and safe.







The second branch was called the **Law-Enforcing Branch**, and it was full of strong and brave animals whose job was to make sure everyone followed the rules made by the Law-Making Branch.



At the top of this branch was the Lion, who was the **President of the Forest**. The Lion was wise, fair, and cared deeply about every animal.

The President had helpers called **Officers**, which included animals like Wolves, Owls, and Hawks. These officers patrolled the forest, making sure everyone knew the rules and was following them.





The Lion had a team called the **Cabinet**, which included the Beavers, Monkeys, and Parrot. Each of these animals had a special job. The Beavers were in charge of building things like dams and homes, the Monkeys helped with food and supplies, and the Parrot watched over the forest from above, keeping everyone safe.

Together, the President and the Cabinet made sure the rules were followed and the forest stayed peaceful. If anyone forgot or broke a rule, the Lion and the officers would remind them of the right thing to do and help them fix any problems.





The third branch was called the **Law-Explaining Branch**. This branch was home to the smartest animals in the forest, and their job was to explain the rules so everyone could understand them. They also made sure the rules were fair and good for all the animals.



The top of this branch were the Wise Owls, who were called the **Judges**. The oldest and wisest of them all was called the Chief Judge. The Judges were very careful and listened to everyone's problems. They sat in a big, tall tree called the Court Tree and decided if a rule was fair or if it needed to be changed.



Sometimes, the animals in the forest didn't agree about what a rule meant. When that happened, they would go to the **Court Tree**, where the Judges would listen to both sides and then explain what the rule really meant. If the rule wasn't fair, the Judges could ask the Law-Making Branch to change it.



Even though each branch had its own special job, they all needed each other to make sure the forest was a happy place. The Law-Making Branch made the rules, the Law-Enforcing Branch made sure everyone followed them, and the Law-Explaining Branch helped everyone understand them and made sure they were fair.





The Big Tree's three branches worked together, and because of that, the magical forest was always peaceful and full of joy. All the animals knew what to do, felt safe, and lived happily ever after.

