



Mower's Ark cic

Prospectus

2019/2020



Mower's Ark CIC – Registered Number 12127764

Mower's Ark is incorporated under the Companies Act 2006 as a Community Interest, Not-for-Profit Company; a private Company and the Company is limited by guarantee, with its registered office being 50 Broadway, Kettering NN15 6DD. Mower's Ark was registered with Companies House on the 29th July 2019.

Mower's Ark is a Christian Ministry created to love and serve those with learning disabilities, and to transform the community by sharing the practical love of Jesus.



Mower's Ark is a family based, Christian Organisation created to provide meaningful activities and work experiences for adults with mild to profound learning disabilities

We provide highly specialised and personalised day services to individuals with learning disabilities in Northamptonshire. Mower's Ark provide Person Centred Planning and can support individuals with complex care and support needs

We offer a wide range of enriching activities with a focus on serving the community of Northamptonshire. Service users who attend Mower's Ark will spend part of their week in tailored work placements which benefit others. Mower's Ark has a focus on outdoor activities that develop health & wellbeing.

We understand how a healthy and active outdoor lifestyle increases health and wellbeing. Our services gives service users real life, meaningful work opportunities that develops their vocational skills and builds self-esteem.

Here at Mower's Ark we understand that everybody needs a little help at some point.

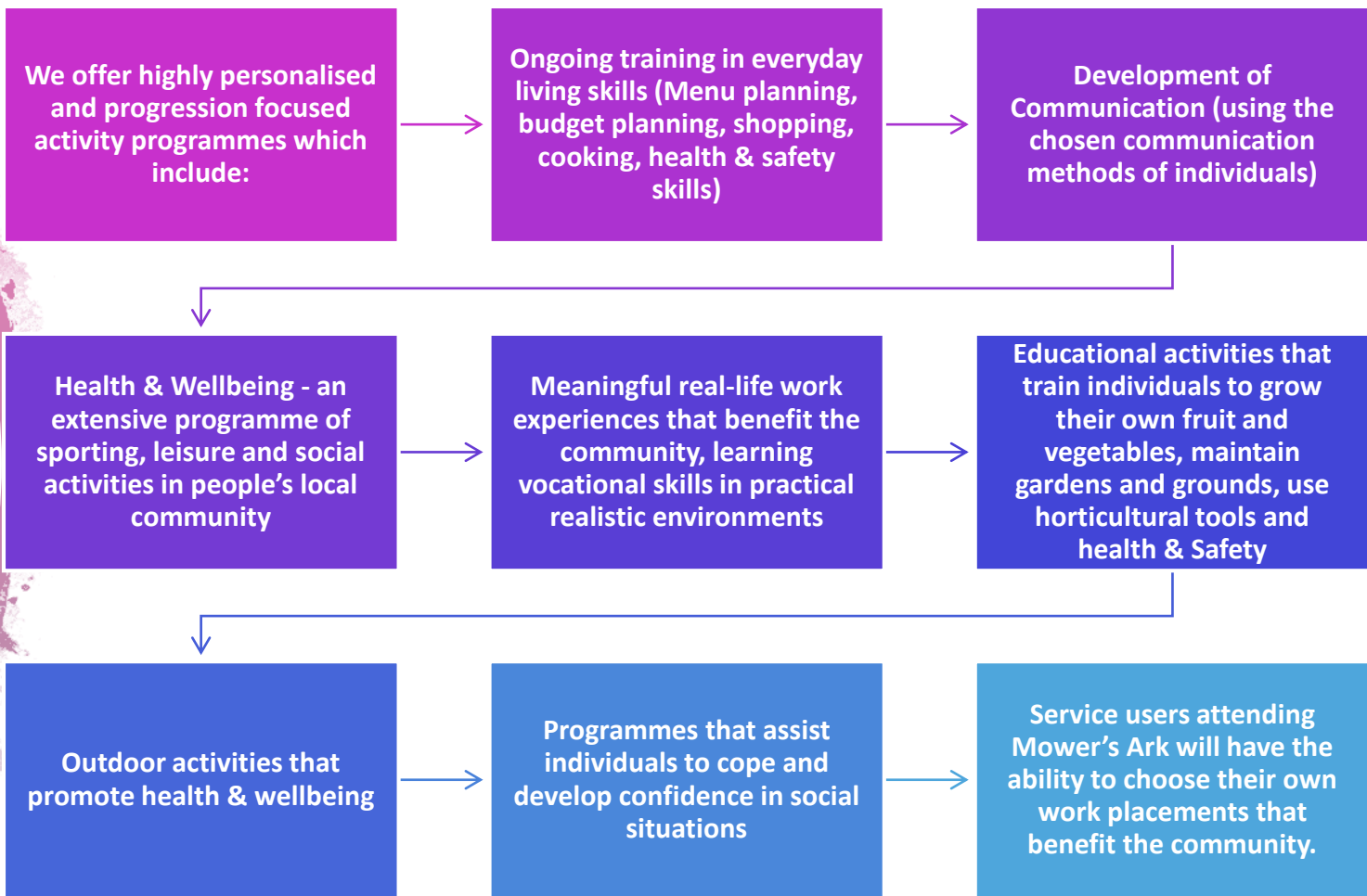
We want to offer the people we support the opportunity to find meaningfulness in serving others.



Mower's Ark provide highly specialised and personalised day services to individuals with learning disabilities in Northamptonshire. Mower's Ark provide skilled Person Centred Plans and support individuals to develop their own personal care and support plans that truly reflect their choices and interests. We will use these to create personalised activity timetables for people which will offer a broad balance of activities that include social community action in outdoor areas.



Individuals attending Mower's Ark will be supported to develop their communication skills, express themselves, make friends and support their community. Most importantly it will be a fun and challenging environment, which will support individuals to strive to meet their potential. All of this will be supported by skilled specialist support staff.



What are the benefits of horticulture and outdoor activities?



PHYSIOLOGICAL:
IMPROVED FINE AND GROSS MOTOR SKILLS;
PHYSICAL FITNESS THROUGH MOVEMENT;
BALANCES SENSES.



PSYCHOLOGICAL:
INCREASED SELF-ESTEEM; INCREASED SENSE OF SELF;
DECREASE IN DEPRESSION & ANXIETY;
INCREASES FOCUS, ATTENTION AND PERSEVERANCE.



COGNITIVE:
STIMULATES CURIOSITY IN LIFE, SCIENCE AND VOCABULARY;
COUNTING; MATHS; SEQUENCES; SEASONAL CHANGES AND PROBLEM SOLVING.



EMOTIONAL: SHARING POSITIVE EXPERIENCES;
OPPORTUNITIES FOR INTERACTION AND RELATIONSHIPS;
CHANNELING OF EXCESS ENERGY; INCREASED CO-OPERATION AND EMPATHY; GREATER SENSE OF RESPONSIBILITY;
SERVING OTHERS LEADING TO INCREASED SELF ESTEEM AND SENSE OF VALUE.



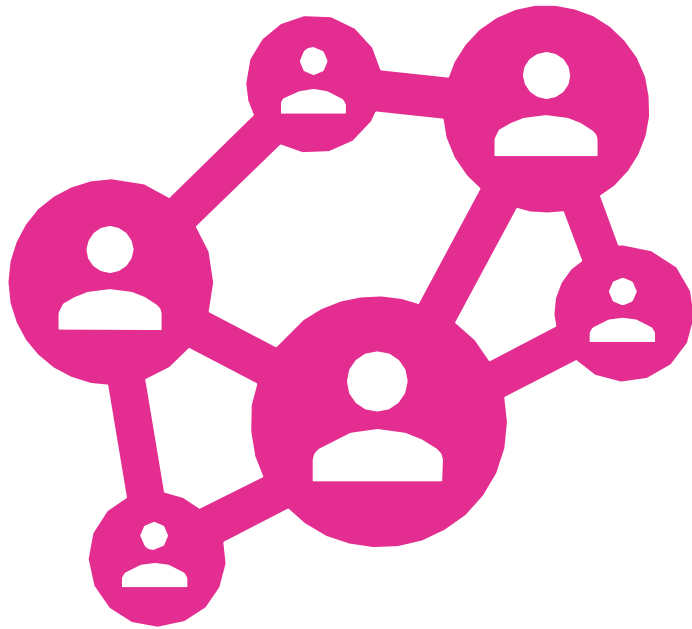
VOCATIONAL:
TRANSFERRABLE EMPLOYMENT SKILLS;
FOLLOWING DIRECTIONS; SHARING ACCOMPLISHMENT;
COMMUNITY & SOCIAL INCLUSION

Community Relationship Building

Mower's Ark will develop relationships to create work experiences that serve the community and support the disabled service users to positively impact society and give them an intrinsic sense of self-confidence and wellbeing.

Mower's Ark intend for strong relationships to be built between the disabled service users and the community services they are serving, will provide companionship and fellowship for lonely and vulnerable groups, and help with tasks that many elderly people may struggle with. The Directors of Mower's Ark intend to partner with local churches, children's groups, schools, nurseries and elderly people's homes.

Mower's Ark will focus on outdoor horticulture, garden & grounds maintenance, growing organic fruit and vegetables (for distribution to the community), cooking and serving healthy meals to others, offering companionship & friendship to those in need.



Mower's Ark CIC Board of Directors





Angelica Phillips

Director, Registered Manager & Designated Safeguarding Lead

Angelica Phillips has supported individuals with learning disabilities for twenty-five years. Angelica has vast experience in working with individuals with mild to profound learning disabilities, complex health needs, emotional and behavioural difficulties and those with behavior that can challenge.

Angelica has managed registered specialist service for people with disabilities for the past five years and is highly experienced in implementing personalised support services as well as quality improvement and compliance.

Outstanding service delivery is Angelica's passion, and she aims to ensure that Mower's Ark has a reputation for the best possible care and support for the people who attend.



Marie Phillips

Director with Educational Oversight

Marie has educational oversight of Mower's Ark. Marie has been a SEN teacher for 30 years, working predominantly with individuals with mild to moderate learning disability. Marie is a PHSE specialist at a local Wellingborough Special School and is skilled at providing educational activities that are tailored to individual strengths.

Marie will provide guidance in the operational running of Mower's Ark and will advise on educational strategies for specific learners based on their initial assessments.

Marie will complete regular quality assurance audits on the service.

Damian Carr

Director

Damian is married with two teenage children and is the Pastor of Hope Church in Corby. His hometown is Corby, but he lived for a number of years in Birmingham where he gained a BA(Hons) in Geography and Theology before working in Economic Development for Birmingham City Council. In his spare time he loves to write songs and do outdoor activities with his family.

Damian will provide pastoral support to people attending mower's ark and will complete regular quality monitoring audits on the service.





Paul Bower

Financial Director

Paul is a retired Oil Industry Manager.

Paul is an Elder at hope Church in Corby, and has a real heart for encouragement and advocacy for those unable to advocate for themselves.

Paul will have financial oversight of Mower's Ark and will regularly complete quality audits on the service.



Benjamin Phillips

Activity Co-Ordinator

Benjamin has worked in care and support for disabled individuals for the last six years. Ben is passionate about supporting individuals to reach their full potential and has developed excellent skills in care and support for those with more profound learning disabilities and complex health needs. Benjamin is a passionate activity planner who is able to make life skills activities meaningful and engaging for those with more complex needs by an ability to differentiate tasks to individual needs.

Ben is skilled in communication support and has a particular gifting in supporting people to develop their individual communication style. This includes PEC's, Widget Symbols, TOBIs, Objects of Reference, Intensive Interaction and BSL.

Ben has an enthusiastic and 'can do' attitude which is infectious. Ben has experience of training and mentoring staff, as well as providing complex health related tasks including; tube feeding; diabetes management; bowel massage and catheter management to name a few.

Mower's Ark Location

Mower's Ark day service is conveniently located in a large community centre in the centre of Corby. There is ramped access and ample car parking available. The location is gated and has a large green space for individual use. The community centre is a short five minute walk to the local shops, café's, cinema complex, swimming pool and bus/train stations.

Within the community centre, Mower's Ark have access to a large professional kitchen area, a café, gym and sports hall. The service is bright, welcoming, accessible for wheelchair users and has an accessible bathroom.

Mower's Ark have educational and therapeutic spaces within the service for work preparation, or to simply relax and enjoy the surroundings. There will be opportunity to enjoy time on site using the kitchen for life skills training, meeting others in the café and gym as well as plenty of outdoor horticultural and social action activities.

Mower's Ark have communication equipment for individual use such as i-pads, assistive technology software, switches and switch boxes.

Transport is provided, as well as Protective Clothing and equipment, and all tools and equipment required for horticultural activities, access and community work.

Mower's Ark are able to collect individuals from home and can provide a transport and escort service, if required.





Mower's Ark Service runs from: -

Living Faith International Ministries (Previously the Connaught Centre)

Cottingham Road

Corby

NN17 1SY

Our opening times are: -

Monday 9am – 4.30pm

Tuesday 9am – 4.30pm

Wednesday 9am – 4.30pm

Thursday 9am – 4.30pm

Friday 9am – 4.30pm

Saturday Closed

Sunday Closed

We are open for 47 weeks of the year (and closed for 5 weeks per year – please see our calendar for more info)

We can be contacted via our website www.mowersarkcic.co.uk; via email at directors@mowersarkcic.co.uk; via telephone on 07447 101015 or in person at the Connaught Centre in Corby. We would love to hear from you.



How can I choose to attend mower's ark?

Health and social care professionals can make a referral, including social workers, transition workers and GPs, referrals will also be taken through the NASS Brokerage System. Alternatively, individuals, their families and friends can make a direct referral by contacting us via the website, telephone or email.

We would meet with service users to assess their needs and would offer a place based upon that assessment. Mower's Ark can be funded by Continuing Health (NHS) funding, social care or personal care budgets and direct payments.

Mower's Ark CIC

Sharing the love of God.
Transforming Lives. Serving Communities.

Our vision is a society where people with learning disabilities are valuable members of the community. We aim to make this happen by providing person-centered, enriching and motivating work experience that serve the local community and share the love of God.





Mower's Ark CIC