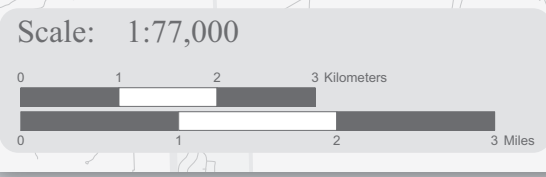
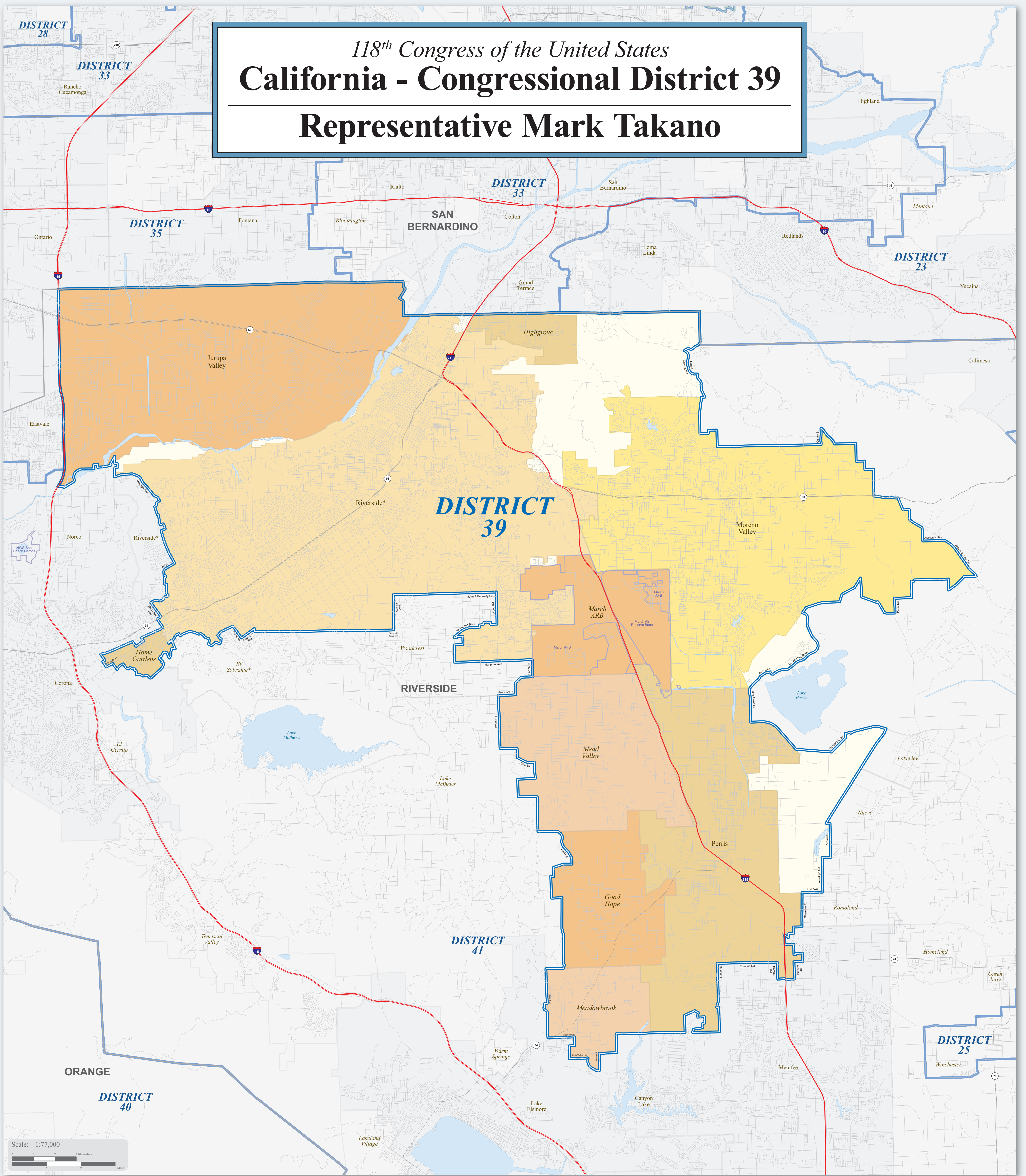


# 118<sup>th</sup> Congress of the United States

## California - Congressional District 39

### Representative Mark Takano



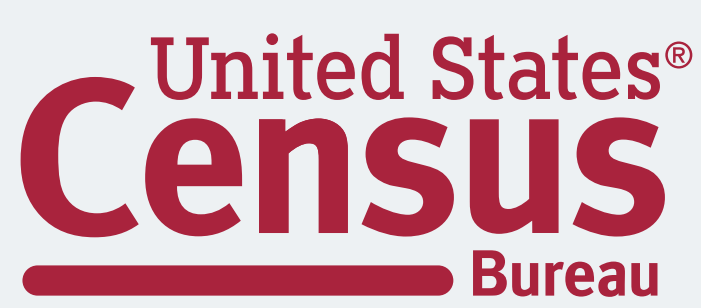
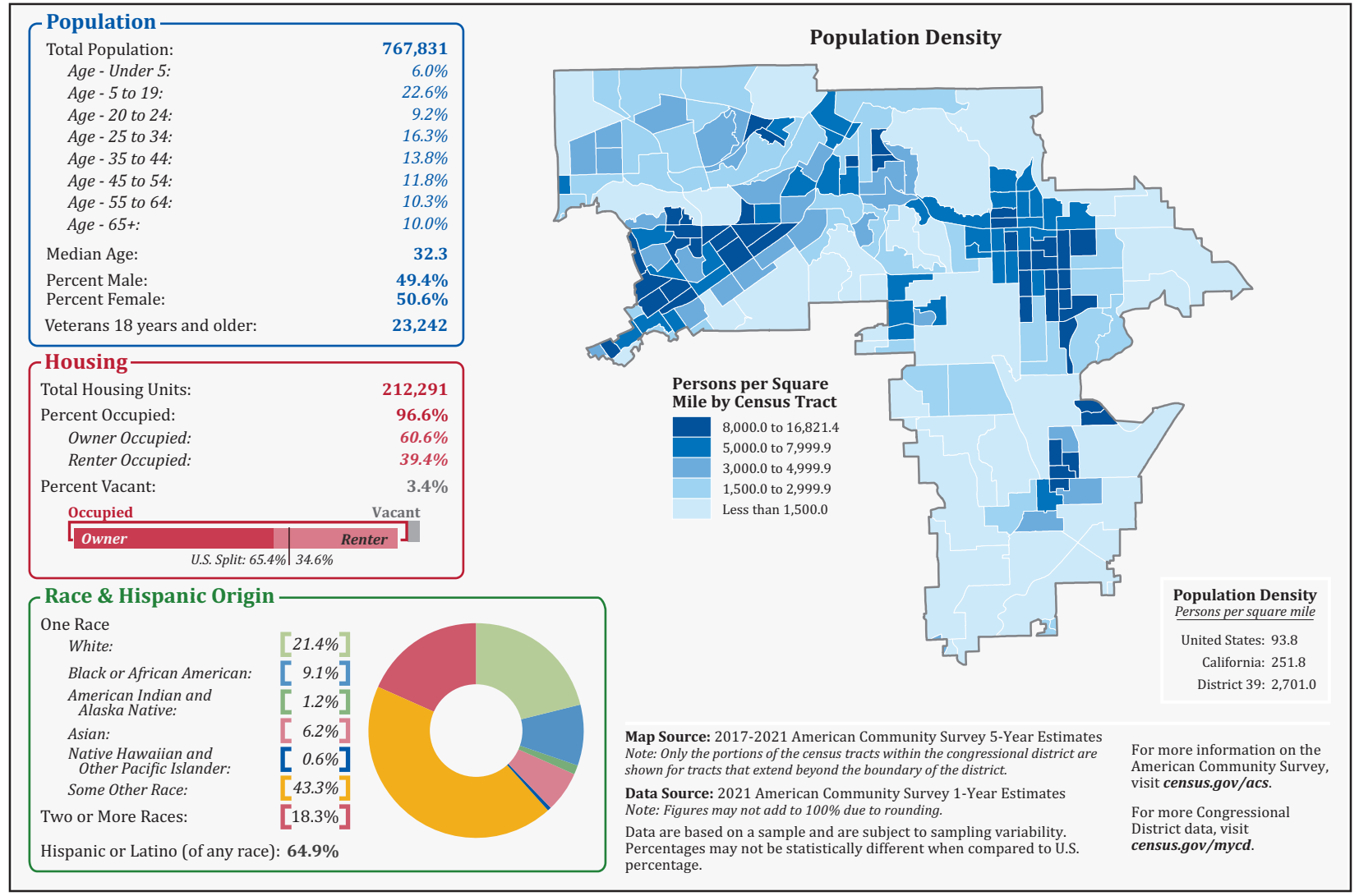
#### Map Legend

- DISTRICT 39 California Congressional District 39
- DISTRICT 2 Other California Congressional District
- Poarch Creek American Indian Reservation / Off-Reservation Trust Land (Federal)†
- Pamunkey American Indian Reservation (State)†
- KANSAS OKLAHOMA State or Statistically Equivalent Entity
- ERIE County or Statistically Equivalent Entity
- Collinsville Incorporated Place (Inside of Congressional District 39)†
- Turley Census Designated Place (CDP) (Inside of Congressional District 39)†
- Chelsea Incorporated Place (Outside of Congressional District 39)†
- Justice Census Designated Place (Outside of Congressional District 39)†
- Fort Belvoir Military Installation
- Bristol Water Body
- Interstate
- U.S. Highway
- State Highway or State Recognized Road
- Other Road or Ferry

†Labels for entities located both inside and outside of Congressional District 39 include a "\*".

Congressional districts are those in effect for the 118th Congress of the United States (January 2023–2025); all other legal boundaries and names are as of January 1, 2020. The boundaries shown on this map are for Census Bureau statistical data collection and tabulation purposes only; their depiction and designation for statistical purposes does not constitute a determination of jurisdictional authority or rights of ownership or entitlement. Source: U.S. Census Bureau's MAF/TIGER database (TAB20) Projection: State-based Albers's Equal Area

#### Congressional District 39 Profile



For general information, contact the Congressional Affairs Office at (301) 763-6100. For more information regarding congressional district plans as a result of the 2020 Census, redistricting, and voting rights data, contact the Census Redistricting and Voting Rights Data Office at (301) 763-4039 or www.census.gov/ds. For information regarding other U.S. Census Bureau products, visit www.census.gov.

#### Location of California's 39<sup>th</sup> Congressional District - 52 Districts Total

