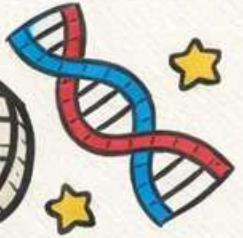




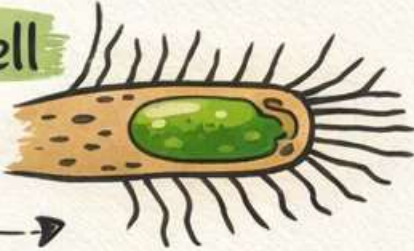
Specialised Cells



Plant Cells

Root Hair Cell

- Absorbs water & minerals
- Large surface area



Palisade Cell

- Lots of chloroplasts
- For photosynthesis



Xylem Cell

- Transports water
- Thick walls



Guard Cell

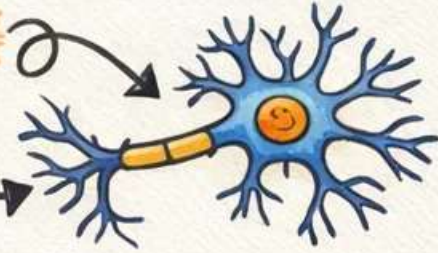
- Controls stomata
- Opens & closes



Animal Cells

Nerve Cell

- Carries nerve impulses
- Long axon



Red Blood Cell

- Carries oxygen
- Flexible shape



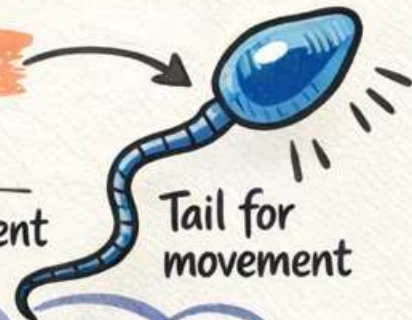
Muscle Cell

- Contracts to cause movement



Sperm Cell

- Swims to egg
- Tail for movement



Adapted for their **Function!**

