



MIGHTY LINE PRODUCTS



MIGHTY LINE
The Only Durable Stripe

Patent No. 8,088,480
Patent No. 8,343,292

THE MIGHTY LINE DIFFERENCE



The Strongest, Most Durable Industrial Floor Marking Products Out There

The Mighty Line difference is the patented technology in our floor tape. Our floor tapes, floor signs and floor markings are made to hold up to the rigors of warehouse activity. In addition to the unsurpassed durability, they are easy to install and have minimal residue upon removal.

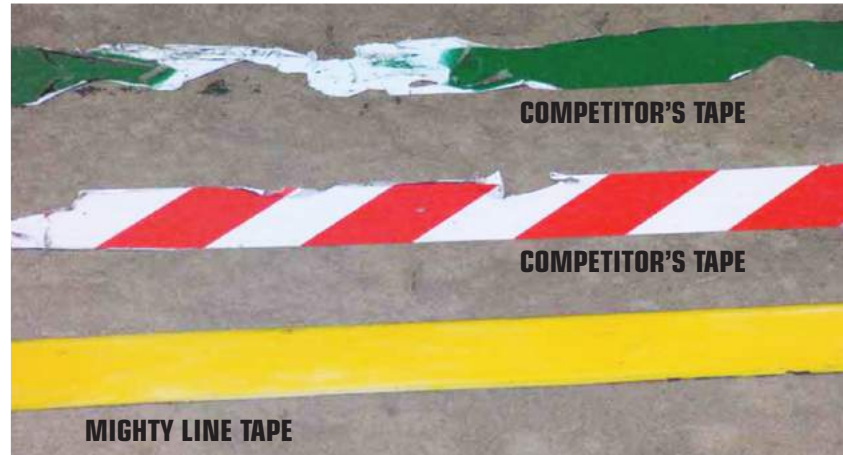
We know how important safety is to every organization. The breadth of the Mighty Line product line covers everything you need to implement a 5S system for the increased productivity of your facility and the safety of your employees.



THE MIGHTY LINE DIFFERENCE

Whose Tape is Toughest?

We installed our Mighty Line tape and a major competitor's tape side by side in an aggressive test area that is frequently traversed by forklifts carrying heavy loads. Nine months later, we visited this site to compare the results. You can see the competitors' tape has significant damage and disintegration, while Mighty Line Tape holds up to the test.



We've Got the Edge on Durability.

- 7 times thicker than average floor tape
- Patented technology makes it more durable than other floor tapes
- Beveled edge increases durability for forklift traffic
- Peel & stick adhesive, removes easily



Color, Size, Shape, You Name It, We Have It.

We have everything you need to organize and safe-guard your facility. Use the many colors and shapes of Mighty Line floor tapes and floor markers to indicate work flow, delineate work areas, and mark proper placement of equipment, tools, inventories, and machinery.



MIGHTY LINE PRODUCTS
ARE MADE IN THE USA



TAPES & SHAPES

Floor Tape Solid

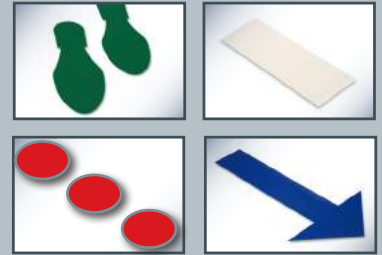
10 COLORS / 4 WIDTHS

- 2"
- 3"
- 4"
- 6"

YELLOW	RED	WHITE	GREEN	BLUE
BLACK	GRAY	ORANGE	PURPLE	BROWN

Floor Tape Shape

16 COLORS / 6 SHAPES



MARK

ORGANIZE



Arrow Shapes in Convenient Rolls

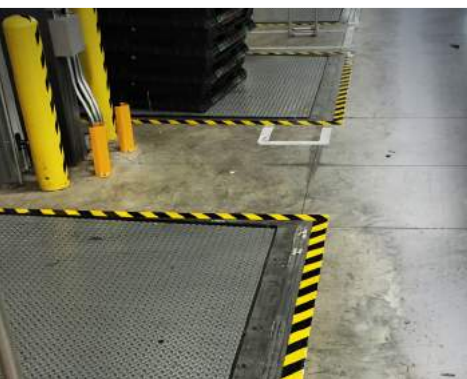
Use a lot of arrows in your facility? The shape you love now comes in an easy-to-peel off roll. Easy handling, easy storage.



Floor Tape Diagonal

6 COLORS / 4 WIDTHS

- 2"
- 3"
- 4"
- 6"



DIRECT



INDICATE

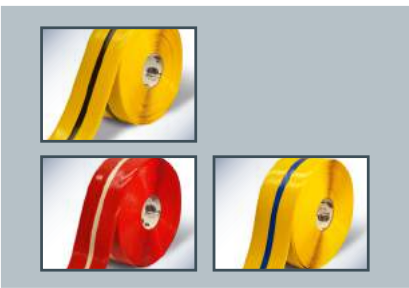
Floor Tape Glow
2 COLORS / 2 WIDTHS



It Glows!
Mighty Glow™ features a 1/2-inch luminescent center line on a 2-inch or 4-inch wide tape that glows-in-the-dark in the event of a power outage.



Floor Tape Stripe
4 COLORS / 2 WIDTHS



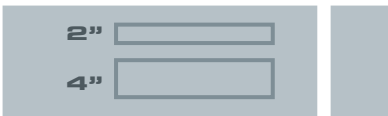
GUIDE



Floor Tape Reflective
1 COLOR / 1 WIDTH



Floor Tape Freezer
1 COLOR / 2 WIDTHS



Reflective Tape Lights the Way
Mighty Line Reflective Floor Tape is a great safety solution for areas of the warehouse that are dark, or have lost power and need emergency paths illuminated. Another great use is in helping semi-trucks back into loading docks at night.

More than a Freezer Tape
The new Mighty Line Frigid Freezer Floor Tape is designed to be applied in cold temperatures as low as -10°F. It's extra-adhesive qualities also makes it a great choice for other challenging surfaces, such as vertical surfaces, or brick or stucco surfaces.

CUSTOM PRODUCTS

Customize it!
Your Text.
Your Logo.
Your Design.

Create your own customized floor tapes and floor signs, using our online Custom Tape & Sign Design Tool. Include your message, your company logo, and choose from our library of graphics, colors, fonts and shapes.



CUSTOMIZE IT!

1 Choose width and color for your custom floor tape



OR Choose shape, size and color for your custom floor sign



2 Design your custom product!

T Type your message here
Place your message anywhere within the shape. Choose font, size and color of type

Place your choice of graphic from our library or upload your own

CHOOSE FILE
UPLOAD
Upload your company logo or graphics



CREATE

CAUTION
Floor Tape

4 WIDTHS / 100' ROLL



COLOR-CODE



Ideas For Enhancing Your 5S System with Customization

It's all about safety and organization. Implement a color-coding system, organize your recycling area, designate loading dock areas, prioritize areas of inventory, and create numerous other organizational or logistical systems. Our online custom design tool gives you the freedom to create the materials you need.

FOOTPRINT Floor Tape

4 WIDTHS / 100' ROLL

RECEIVING AREA

PICKUP AREA

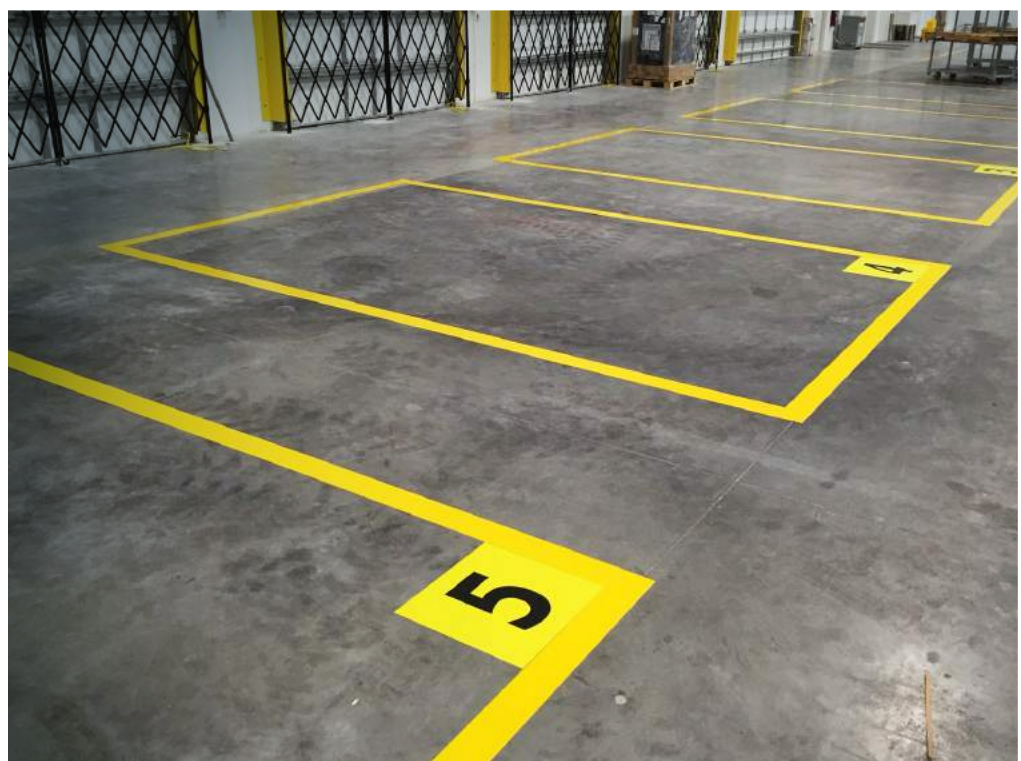


DESIGN



AUTHORIZED PERSONNEL Floor Tape

4 WIDTHS / 100' ROLL



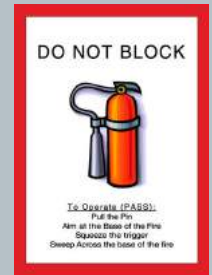
CUSTOMIZE

FLOOR SIGNS

Floor Signs

Mighty Line industrial floor signs are great for marking safety areas. Our floor signs come in a variety of standard options for you to choose from or you can customize your own signs. Our Mighty Line floor signs are extremely durable and can handle the rough industrial environment. Mighty Line floor signs have a peel and stick adhesive.

ALERT



Customize it!
You can customize any of these signs or create your own sign design using our online tool.



DESIGNATE



NEW PRODUCTS

NEW! Label Protectors

Mighty Line Floor Marking Label Protectors are a valuable and versatile 5S floor marking tool, great for designating inventory. Place our clear label over your own custom label or barcode label. Mighty Line Label Protectors are easy to apply, with a peel-and-stick adhesive, and remove easily, with no residue.



PROTECT

Floor Marking Label Protectors

2 SIZES
6"x10" / 10"x13"



NEW! MightyLine Mats

This innovative peel and stick product is great for entry ways and high-traffic areas, absorbing tracked-in water and oils so the area remains safe. When the mat needs to be replaced, easily pull up and replace with a new one. MightyLine Mats are great for warehouses, food and grocery stores, retail stores, oil and gas, and tire centers.

- Leak-proof, industrial strength, adhesive backing can be lifted with no residue upon removal
- 34" x 100' rolls—Roll and cut to fit any space
- Easy application and removal
- Replaces expensive mat rental service

PREVENT



MightyLine Mats

34" x 100' ROLL



SPECIALTY ITEMS



Floor Tape Brick

2 COLORS / 2 WIDTHS

- 2"
- 4"



RAMGUARD™ COLUMN PROTECTION by Ridg-U-Rak

Superior Column Protection

Protect your rack columns with RAM Guard™ with its patent-pending Rubber Armored Metal design. Molded of energy absorbing rubber with a "U-shaped" steel insert and force distributing rubber voids, RAM Guard™ absorbs significantly more energy during impact than most column protection devices offered today.



SAFETY FIRST

STAND OUT

Floor Tape Anti-Slip

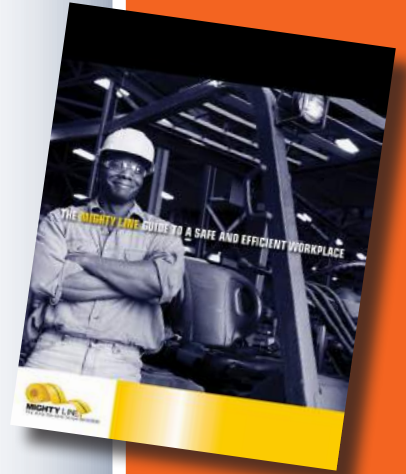
4 COLORS / 4 WIDTHS

- 2"
- 3"
- 4"
- 6"



Stay Safe. Stay Efficient. Stay OSHA Compliant.

OSHA mandates that employee walkways and work areas be clearly marked -- and the penalties are hefty. But even without OSHA, you have plenty of incentive to use Mighty Line Floor Tapes and Floor Signs: safety, efficiency, productivity, and ultimately, profitability. To help you out, we've pulled together *The Mighty Line Guide to a Safe and Efficient Workplace*.



Floor Tape & Floor Sign Installation Tips:

- Ensure installation area is clean and dry, and floor temperature is above 50°F.
- Adhere an edge of floor tape/sign to floor and remove the adhesive backing as the tape/sign is stuck to the floor.
- As you go, work out air bubbles from under the sign.

Application Made Easy.

Try our convenient Mighty Line Floor Tape Applicator. This easy to use applicator comes with a side laser guidance system and comes in two sizes: 2", 3" and 4" tape applicator (shown) or 6" tape applicator.



Clean your surface.

Our cleaner is a green cleaning product that simplifies industrial cleaning and saves time by penetrating, dissolving, and safely cleaning any washable surface.

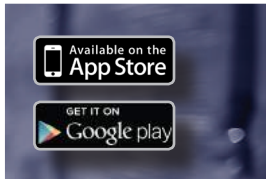


INTRODUCING THE **MIGHTY LINE 5S** APP



Everything You Need to Know About 5S in Your Back Pocket

- Design and implement your 5S system on your phone or device with the ML5S app tools, including the Mighty Line Floor Marking Calculator
- Keep up to date on 5S news with articles from expert sources around the world
- Be the first to learn about new products from our extensive product selection
- Access 5S educational and application videos on everything from tape application to setting up a factory wide system
- Meet and share tips with our community of over 2,500 5S managers



MIGHTY LINE. THE ONLY DURABLE STRIPE.



ShieldMark, Inc.

19147 Eastlook Road, PO Box 16618, Rocky River, Ohio 44116

800-714-9980

FAX 440-220-4381

info@mightylinetape.com

www.mightylinetape.com

©2018 Shieldmark, Inc. Mighty Line Tape is a brand of Shieldmark, Inc.