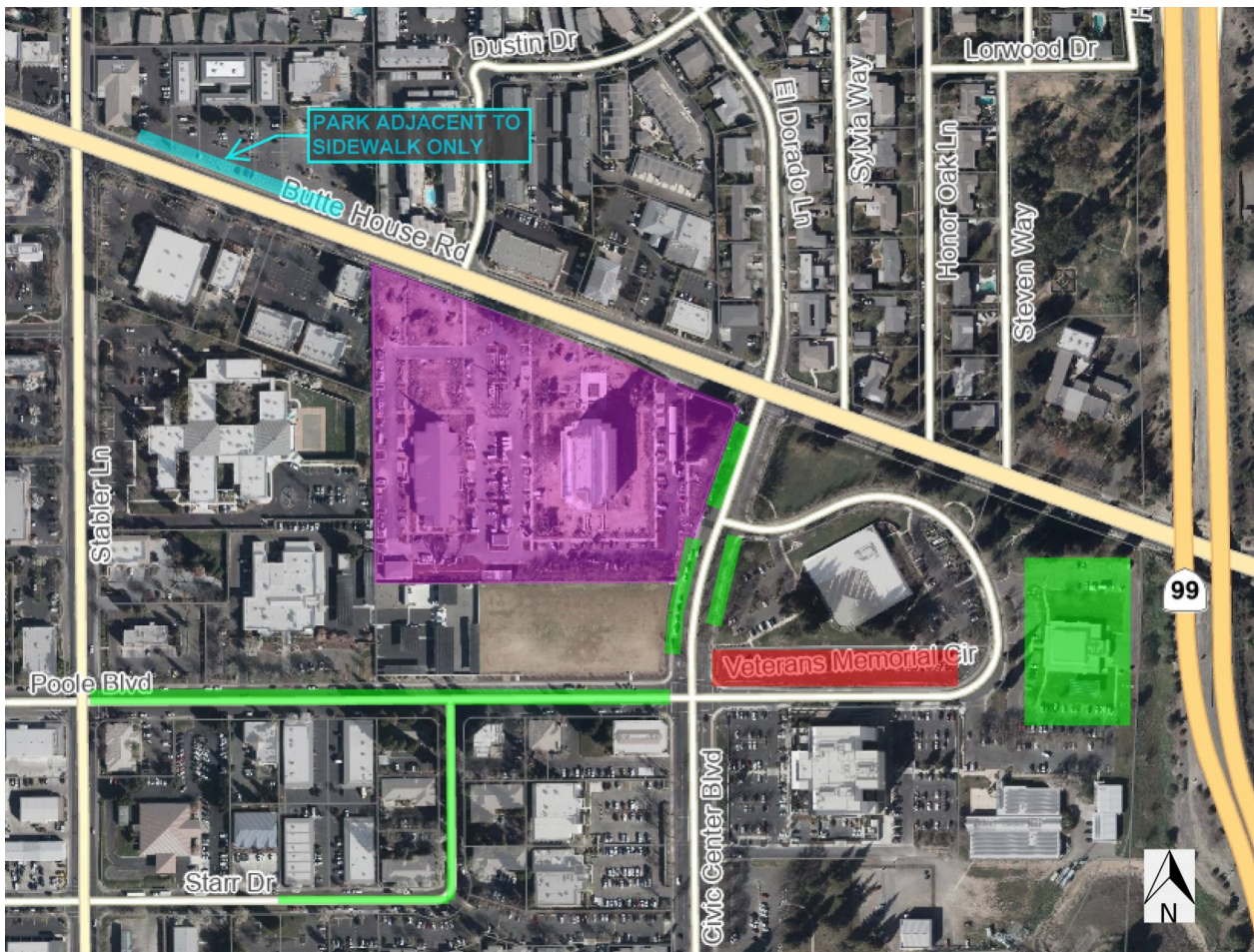


## FEATHER RIVER TEMPLE OPEN HOUSE

# Parking Locations

In addition to on-site parking, visitors may park off-site at the locations shown below. Please help us be good neighbors and do not park in adjacent business parking lots.



- PURPLE ZONE (ON-SITE PARKING)**
- GREEN ZONE (PARKING ALONG STREET AND VETERANS HALL PARKING LOT)**
- BLUE ZONE (SOUTH END OF LOT, ADJACENT TO SIDEWALK ONLY)**
- RED ZONE (WEEKDAYS AFTER 6 PM, AND ALL DAY SATURDAYS ONLY)**

### FEATHER RIVER TEMPLE OPEN HOUSE

Hours:  
August 19th: 3 pm - 9 pm  
August 21st thru September 9th:  
9 am - 9 pm (except Sundays)  
Last tour begins at 8 pm daily