

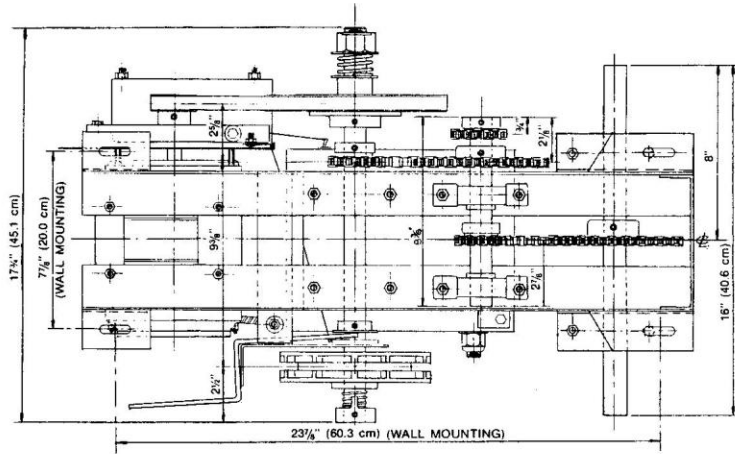
# Technical Information

EHJ

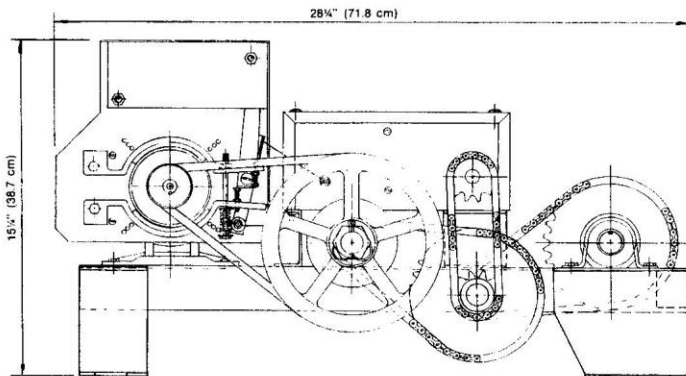
---



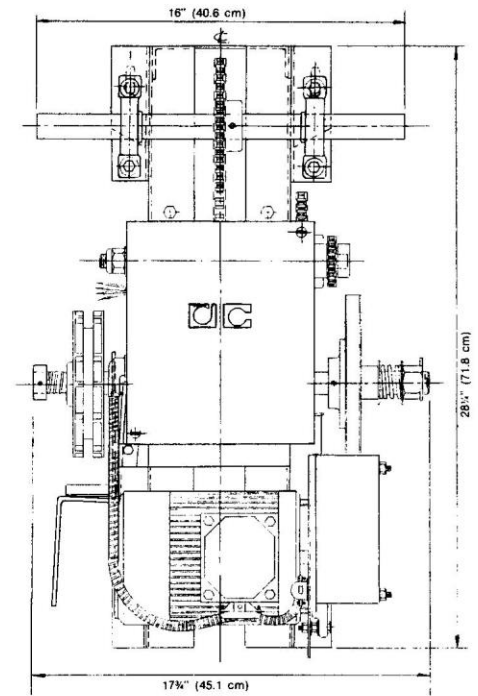
235 AVE LABROSSE, POINTE-CLAIRE,  
MONTREAL, (QUEBEC) CANADA, H9R 1A3  
TEL.: (514) 695-0772 - 800-667-0772  
FAX: (514) 695-0248 - 800-667-0248  
[www.doorlec.com](http://www.doorlec.com)



**PLAN VIEW  
(LOOKING FROM THE BOTTOM)**



**ELEVATION VIEW**



**PLAN VIEW  
(LOOKING FROM THE TOP)**

FOR EXPLODED VIEW  
SEE DRAWING NO. 1057A

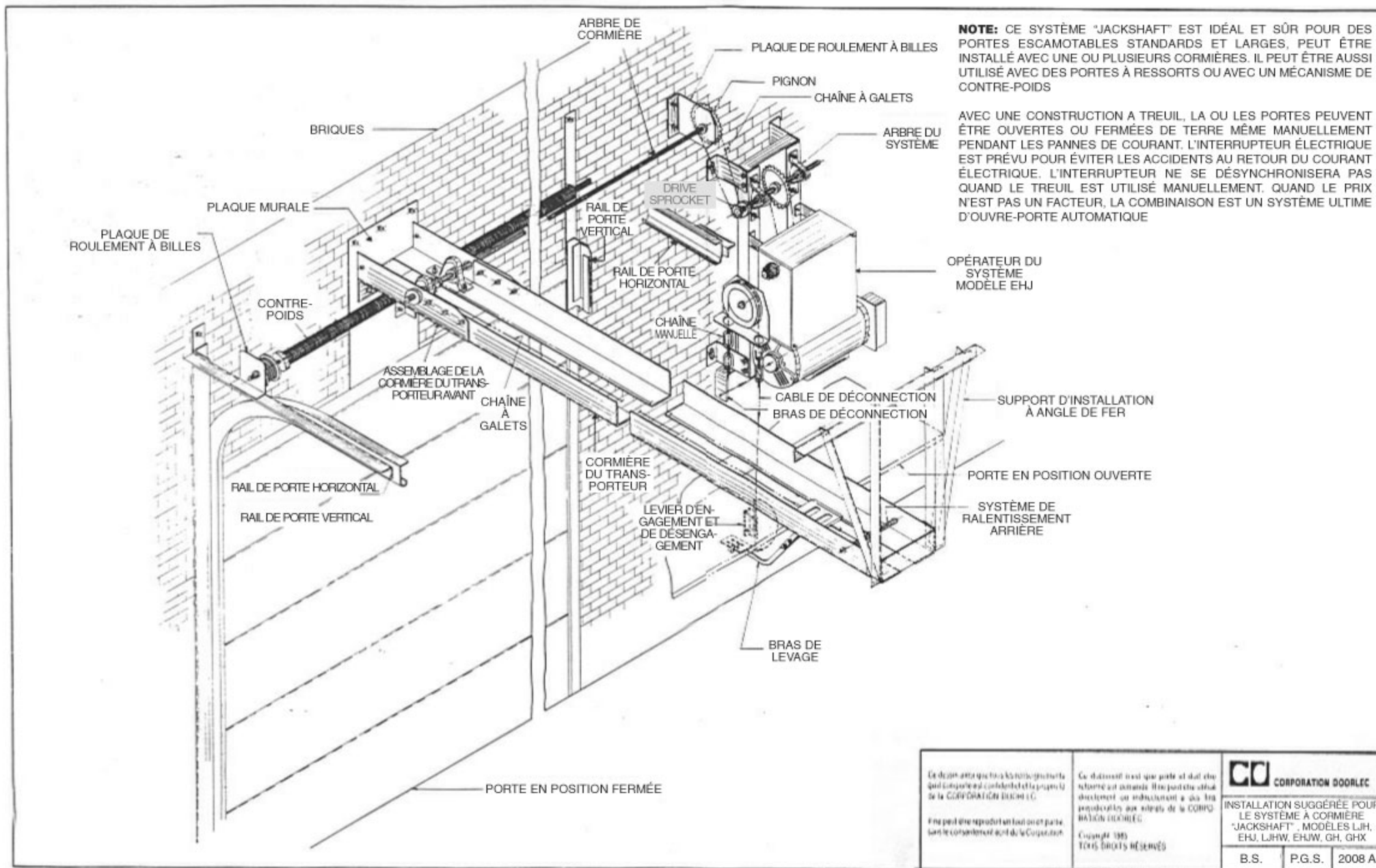
This drawing and all information contained  
thereon is confidential and the property of  
DOORLEC CORPORATION

It may not be reproduced in whole or in part  
without express written consent

This document is loaned subject to be returned  
upon demand. It may not be used directly or  
indirectly for purposes detrimental to the  
interests of DOORLEC CORPORATION

Copyright 1986  
ALL RIGHTS RESERVED

<b>CD</b> DOORLEC CORPORATION		
<b>MODEL EHJ ASSEMBLY</b>		
Date: April 1987	Approved P.G.S.	Drawg. No. <b>3008</b>

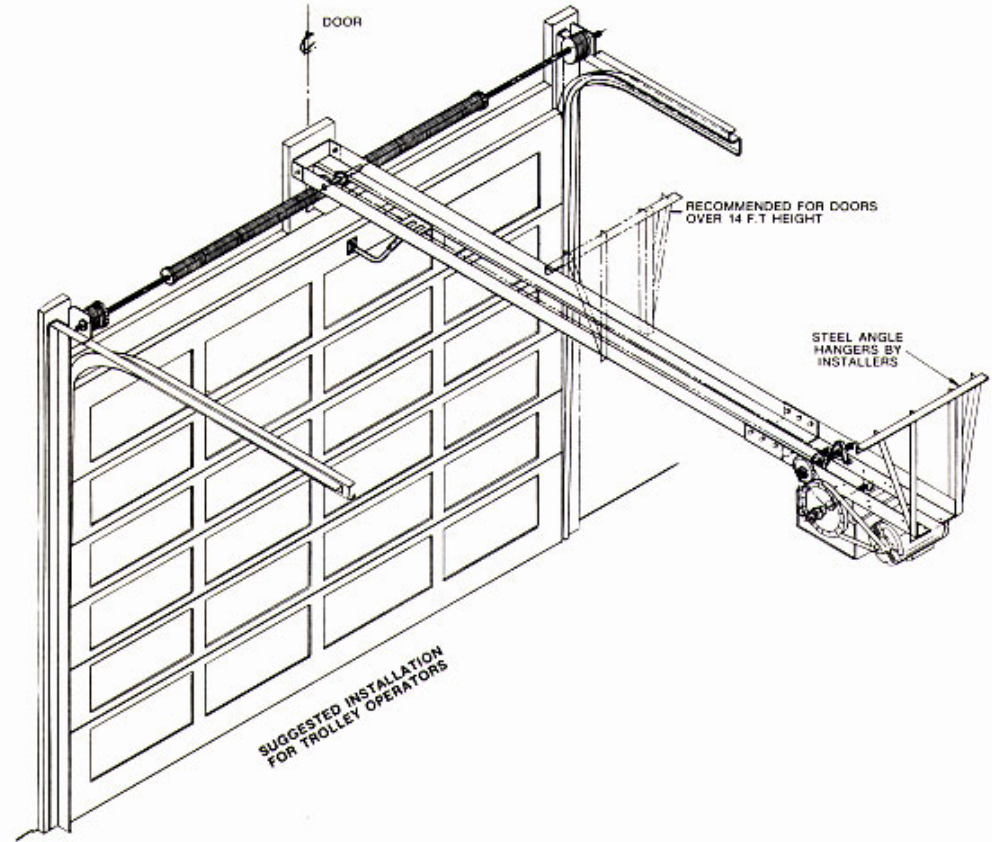
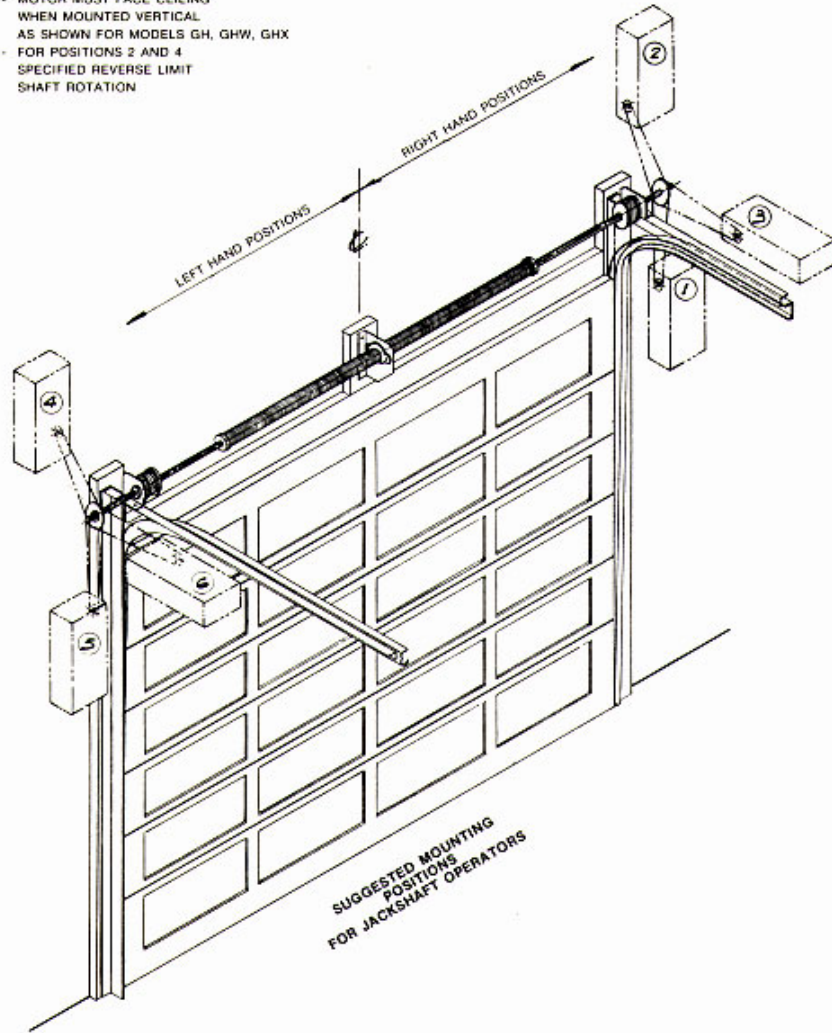


<p>Le dessin est la propriété exclusive de la CORPORATION DOORLEC.</p>	<p>Ce dessin est une copie et doit être utilisé tel quel. Il ne peut être utilisé directement ou indirectement à des fins autres que celles de la CORPORATION DOORLEC.</p>	<p><b>CD</b> CORPORATION DOORLEC</p> <p>INSTALLATION SUGGÉRÉE POUR LE SYSTÈME À CORMIÈRE "JACKSHAFT", MODÈLES L.J.H., E.H.J., L.J.H.W., E.H.J.W., G.H., G.H.X.</p>
<p>Ne peut être reproduit sans la permission écrite de la Corporation.</p>	<p>Copyright 1985 Tous droits réservés</p>	
		<p>B.S.   P.G.S.   2008 A</p>

- POSITIONS**
- 1- BELOW DRIVEN SHAFT R.H.
  - 2- ABOVE DRIVEN SHAFT R.H.
  - 3- SHELF MOUNT R.H.
  - 4- ABOVE DRIVEN SHAFT L.H.
  - 5- BELOW DRIVEN SHAFT L.H.
  - 6- SHELF MOUNT L.H.

**NOTE**

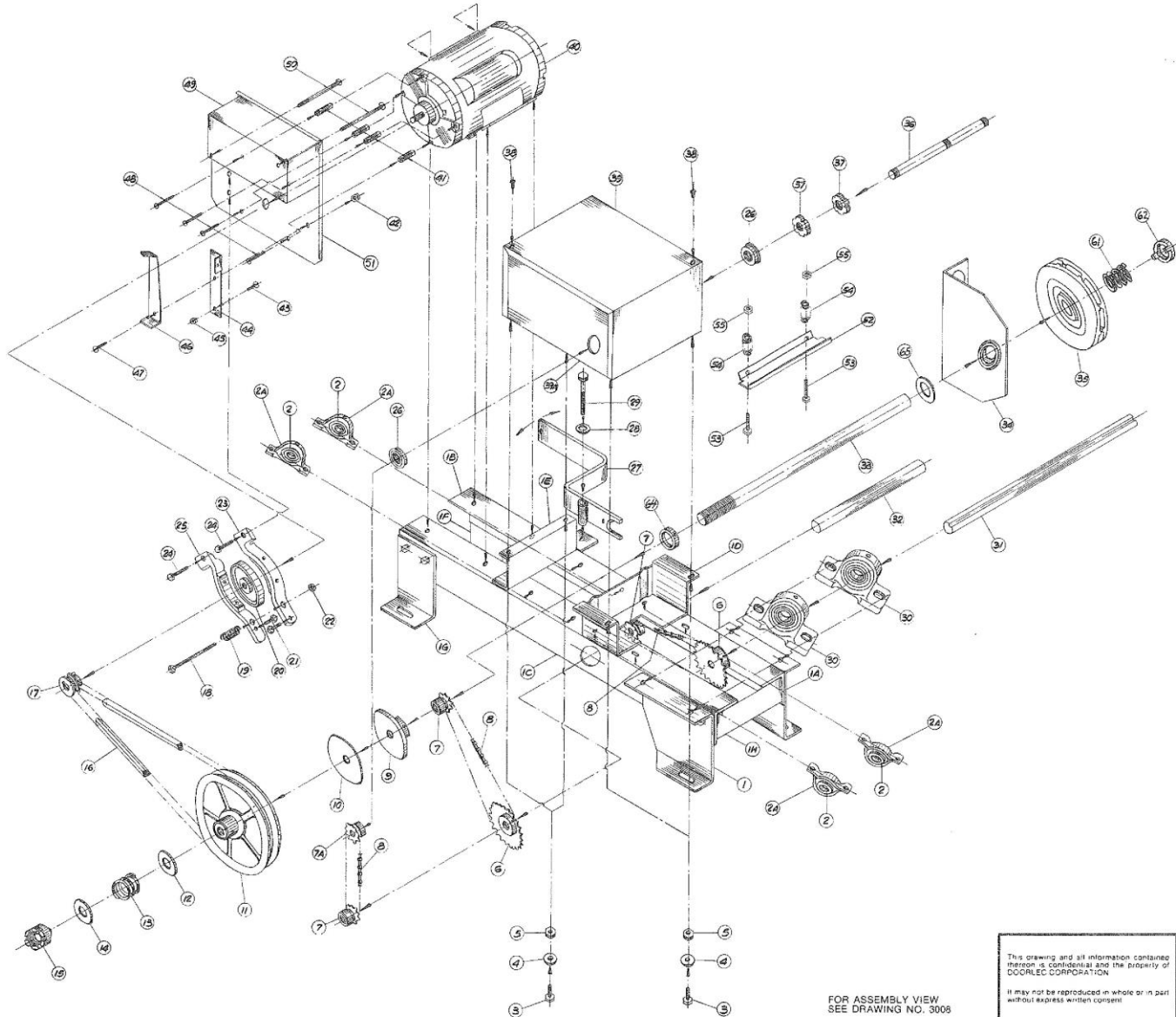
- MOTOR MUST FACE CEILING WHEN MOUNTED VERTICAL AS SHOWN FOR MODELS GH, GHW, GHX
- FOR POSITIONS 2 AND 4 SPECIFIED REVERSE LIMIT SHAFT ROTATION



<p>This drawing and all information contained therein is confidential and the property of DOORLEC CORPORATION</p> <p>It may not be reproduced in whole or in part without express written consent</p>	<p>This document is loaned subject to be returned upon demand. It may not be used directly or indirectly for purposes detrimental to the interests of DOORLEC CORPORATION</p> <p>Copyright 1985 ALL RIGHTS RESERVED</p>	<p><b>CC DOORLEC CORPORATION</b></p>		
		<p><b>ELECTRIC OPERATORS JACKSHAFT &amp; TROLLEY INSTALLATION</b></p>		
		Date: April 1987	Approved P.G.S.	Draw. No. 3027

# EXPLODED VIEW

# EHJ



**PARTS LIST**  
**MODEL EHJ**  
**Drawing no 1057 A**  
**MECHANICAL**

PART NO.	DRAWING CODE	DESCRIPTION
1	1057 A 14437	Leg, front right
1A	1057 A 14404	Leg, front left
1B	1057 A 23104	Frame angle 27" (68.5 cm), left
1C	1057 A 23106	Frame angle 27" (68.5 cm), right
1D	1057 A 42208	"Z" Bracket, control cabinet support - front
1E	1057 A 23105	"U" Bracket, control cabinet support - rear
1F	1057 A 14408	Leg, rear left
1G	1057 A 14403	Leg, rear right
1H	1057 A 14216	Frame Front Brace EHJ
2	1057 A 28301	Bearing insert, pillow block ASPP 205 1" (2.5 cm) bore
2A	1057 A 42413	Pillow block bearing housing GF-3 set
3	1057 A 11296	Cap screw, hex 1/2" x 1/2"
4	1057 A 11376	Washer, flat 1/2" (1.63 cm)
5	1057 A 11811	Nut 1/2" (1.63 cm) - 20
6	1057 A 31103	Sprocket 41836 - 1" (2.5 cm) bore KW/SS
7	1057 A 31117	Sprocket 41812 - 1" (2.5 cm) bore KW/SS
7A	1057 A 31118	Sprocket 41812 - 3/4" (1.58 cm) bore KW/SS
8	1057 A 24241	Roller chain RC41
8A	1057 A 24611	Connecting link #41 (not shown)
9	1057 A 12501	Clutch plate, aluminum 4" (10 cm) dia. x 1" (2.5 cm) bore
10	1057 A 12576	Clutch disc, asbestos 4" (10 cm) dia. x 1" (2.5 cm) bore
11	1057 A 34103	"V" Belt pulley 805 8" (20 cm) x 1" (2.5 cm) bore
12	1057 A 11251	Washer SAE 1" (2.5 cm) hole
13	1057 A 20138	Clutch spring - 1"
14	1057 A 11251	Washer SAE 1" (2.5 cm) hole
15	1057 A 11296	Nut, 1" (2.5 cm) - 8 castellated
16	1057 A 80052	"V" Belt 5L350
17	1057 A 34201	"V" Belt pulley MA200 1/2" (1.58 cm) bore
18	1057 A 11292	Cap screw 1/2" (1.63 cm)-20 x 4" (10 cm) long
19	1057 A 20001	Brake spring
20	1057 A 12561	Brake 5/8" x 4" (10 cm) dia.
21	1057 A 11774	Cap screw 1" (1.63 cm) - 20 x 1" (2.5 cm) (not shown)
22	1057 A 11289	Nut, 1/2" (1.63 cm) - 20 nylon insert
23	1057 A 12582	Brake shoe, lower
24	1057 A 11281	Cap screw, hex 1/2" x 1 1/2" (1.63 cm x 3.8 cm)
25	1057 A 12563	Brake shoe, upper
26	1057 A 28052	Flange bearing F-205-13 1/2" (1.58 cm) hole
27	1057 A 14122	Holst Disconnect Arm
28	1057 A 11252	Washer, flat 3/4" (1.94 cm)
29	1057 A 11264	Cap screw, hex 3/4" x 2 1/2" (1.94 x 6.35 cm)
30	1057 A 28153	Pillow block bearing, cast iron 1" (2.5 cm) hole
31	1057 A 26110	Shaft, steel 1/2" (12.7 cm) x 1" (2.5 cm) dia
32	1057 A 26156	Shaft 3/8" x 1" (20.25 x 2.5 cm)
33	1057 A 26125	Shaft, threaded 17/8" x 1" (44.38 x 2.5 cm)
34	1057 A 28204	Chain guard 1"
35	1057 A 12513	Pocket wheel 1" O.D.
36	1057 A 26140	Cam shaft, threaded 3/4" (1.58 cm) - 24 x 1" (25.88 cm) long
37	1057 A 11801	Oilite cam, grooved 3/4" (1.58 cm) - 24 x 1/4" (9.5 mm) wide
38	1057 A 11099	Truss head Bolt 10-32 x 1/2"
39	1057 A 42402	Cover, control cabinet
39A	1057 A 42401	Base, control cabinet
40	1057 A	Electric motor (see name plate for H.P. and voltage)
41	1057 A 11832	Spacers, hex (when used)
42	1057 A 11281	Nut, 1/2" (1.63 cm) - 20 nylon insert
43	1057 A 11195	Truss head bolt 1/2" - 20 x 1/2" (1.63 cm - 20 x 1.9 cm)
44	1057 A 14212	Solenoid-brake lever, lower
45	1057 A 11289	Nut, 1/2" (1.63 cm) - 20 nylon insert
46	1057 A 14211	Solenoid-brake lever, upper
47	1057 A 11196	Truss head bolt 1/2" - 20 x 3/4" (1.63 cm - 20 x 1.9 cm)
48	1057 A 11290	Nut, hex 8 - 32
49	1057 A 30010	Cover, relayed switch
50	1057 A 11281	Stove bolts 1/2" (1.63 cm)-20 x 3/8" (8.75 cm)
51	1057 A 14213	Brake plate
52	1057 A 26117	Cam retainer plate
53	1057 A 11261	Cap screw, hex 1/2" x 1 1/2" (1.63 cm x 3.8 cm)
54	1057 A 20111	Cam retainer plate springs
55	1057 A 11289	Nut, 1/2" (1.63 cm) - 20 nylon insert
56	1057 A 11282	Nut, nylon insert No. 8 (not shown)
57	1057 A 11283	Nut No. 5 (not shown)
58	1057 A 11261	Lock washer #6 (not shown)
59	1057 A 11189	No. 6 Limit Switch Spacer (not shown)
60	1057 A 11201	Machine Bolt No. 6 x 2" (15 cm) (not shown)
61	1057 A 20109	Holst spring EHJ
62	1057 A 12132	Pocket wheel coupling
63	1057 A 11091	Nut, fine 1/4"-24 for cam shaft (1.56 cm) (not shown)
64	1057 A 20650	Shaft collar - 1" (2.5 cm) hole
65	1057 A 11251	Washer SAE 1" (2.5 cm) hole

FOR ASSEMBLY VIEW  
SEE DRAWING NO. 3008

This drawing and all information contained hereon is confidential and the property of DOORLEC CORPORATION.  
It may not be reproduced in whole or in part without express written consent.

This document is loaned subject to be returned upon demand; it may not be used directly or indirectly for purposes extraneous to the interests of DOORLEC CORPORATION.  
Copyright 1985  
ALL RIGHTS RESERVED

<b>DOORLEC CORPORATION</b>		
<b>MODEL EHJ</b>		
<b>EXPLODED VIEW</b>		
Date: April 1987	Approved P.G.S.	Draw. No. 1057 A

HORSEPOWER SELECTION GUIDE (no height limitation)					
Motor	Door of wood or aluminium	Fiberglass	Steel door 20 ga.	Rolling steel	Unballanced door wt.
1/3 H.P. 249W	320 sq.ft. 30m <sup>2</sup>	576 sq.ft. 54m <sup>2</sup>	288 sq.ft. 27m <sup>2</sup>	288 sq.ft. 27m <sup>2</sup>	1200 lbs. 544 kg.
1/2 H.P. 373W	400 sq.ft. 37m <sup>2</sup>	624 sq.ft. 58m <sup>2</sup>	320 sq.ft. 30m <sup>2</sup>	320 sq.ft. 30m <sup>2</sup>	1500 lbs. 680 kg.
3/4 H.P. 560W	576 sq.ft. 54m <sup>2</sup>	672 sq.ft. 62m <sup>2</sup>	400 sq.ft. 37m <sup>2</sup>	400 sq.ft. 37m <sup>2</sup>	2000 lbs. 907 kg.
1 H.P. 746W	625 sq.ft. 58m <sup>2</sup>	720 sq.ft. 67m <sup>2</sup>	576 sq.ft. 54m <sup>2</sup>	576 sq.ft. 54m <sup>2</sup>	2800 lbs. 1270 kg.

## IMPORTANT NOTICE

Electrical wiring shown are for all our electric door, gate, traffic control barrier operators built with the Logic Controller DC2000 since 1994.

For electric operator prior of 1994 please fax or email the serial number and model of operator, we will fax you the appropriate electrical drawing for that unit for per usual.

You will find the serial number on the control cabinet cover sticker. The first two digits represent the year of fabrication and the 4 or 5 next digits are the serial number.

**40a**  
(115v.)

**41a**  
(230v.)

**42a**  
(208v./460v./575v.)