



Innovative door products

SDI COMMERCIAL - MODEL C300



COMMERCIAL SECTIONAL INSULATED STEEL DOOR

- Manufactured, engineered, stocked and assembled in Canada
- Long-lasting door system that is suitable for warehousing, fire halls, refrigerated buildings & more
- Manufactured on a continuous polyurethane production line utilizing the latest in rigid foam technology
- A wide range of door operators and controls available to suit your application
- High strength to weight ratio to ensure a strong and long-lasting door system



SDI COMMERCIAL - MODEL C300

Flexible Top Weather Seal
(Optional)

Glazing
Type: CPL, E, D (Optional)

Polyurethane Core
(R 24.52)

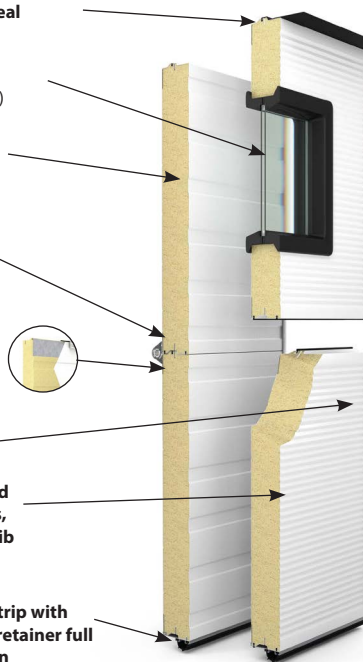
Face Hardware

Continuous, top and bottom internal steel reinforcement for hardware mounting

0.063" (1.6mm)
Galvanized End Caps

Pre-painted, hot dipped galvanized steel sheets, stucco embossed and rib reinforced

Bulb shaped weather strip with continuous aluminum retainer full width of bottom section



FEATURES

Insulated sections fabricated from pre-painted, hot dip galvanized, steel sheet; with rigid polyurethane insulation core, CFC-1 1 free, face sheet stucco embossed and rib reinforced

Sections thermally broken, steel-polyurethane-steel sandwich formed by continuous process

Sections: Formed with ship lap joint and 1.6mm (16ga) galvanized steel endcaps

Reinforcement: Continuous internal reinforcement for hardware mounting

Finish: Two coat, baked-on paint system, primer and polyester finish coat, white

Hardware: 3" Adjustable continuous angle (ADCA)

Design: Designed to meet industry standard windload requirements

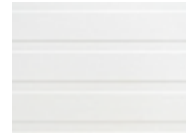
Weatherstripping: Neoprene bulb weatherstrip with retainer. Two dual finned seals between sections (Optional track mount available)

Materials and Construction

C300 Sections	3" (76mm) Thick
R-Value	R-24.52
Face Sheet Thickness	0.016" (0.41mm)
Maximum Opening Width	24'-2" (8941mm)
Maximum opening Height	22' (6706mm)
Warranty	10 years against delamination of the panels 1 year on materials and workmanship

Colour and Profiles

Panel Finishes - Ribbed profile



White

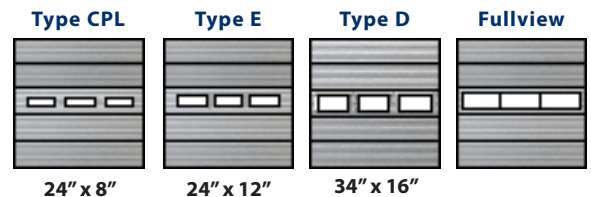
Glazing



CPL

E

D



24" x 8"

24" x 12"

34" x 16"

HEAVY-DUTY HARDWARE OPTIONS

DOUBLE-END HINGE



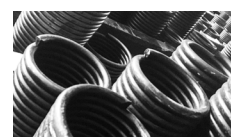
NYLON ROLLERS



EXHAUST PORT



HIGH CYCLE SPRINGS



Can be cut into any type of sectional door

