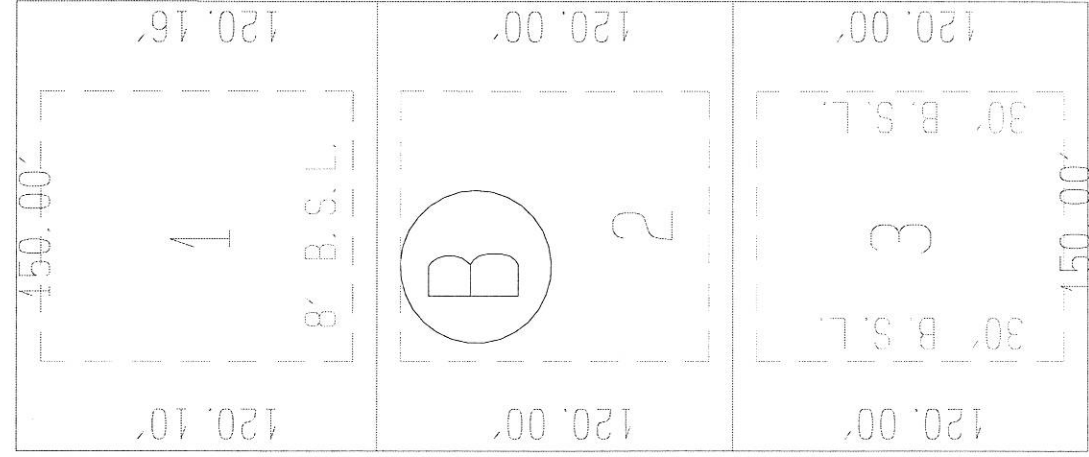
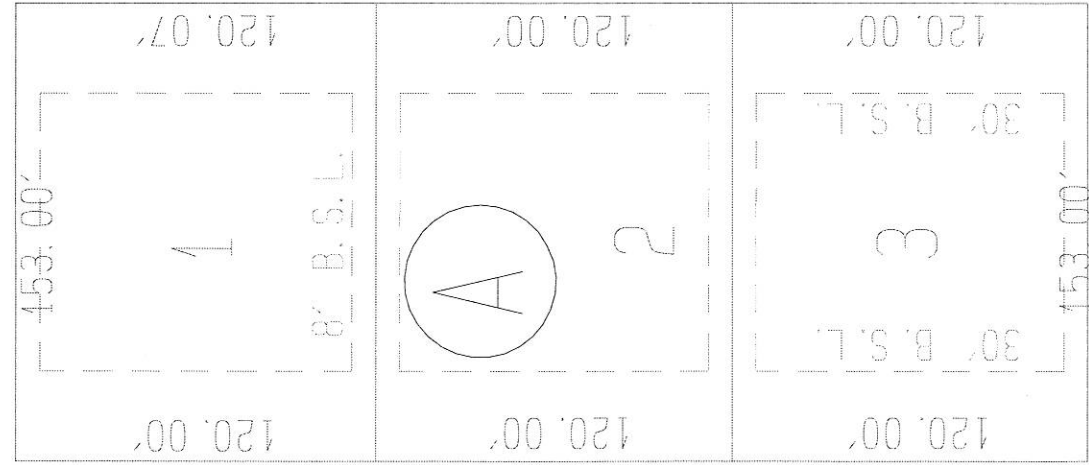


# PLANTATION HILL - UNIT 1

PLAT# 00585, SUB# 3212

P. B. "D", PG. 80

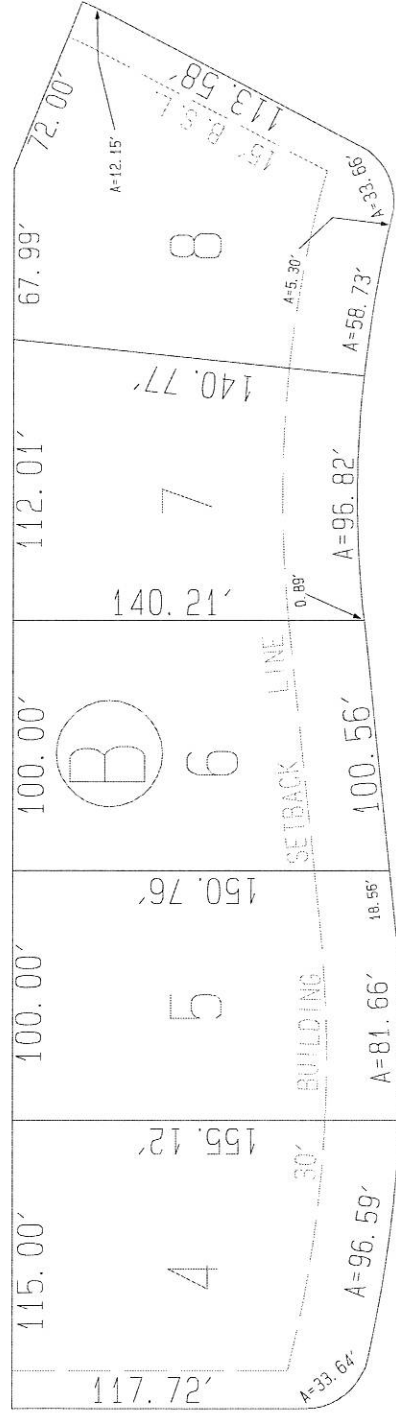
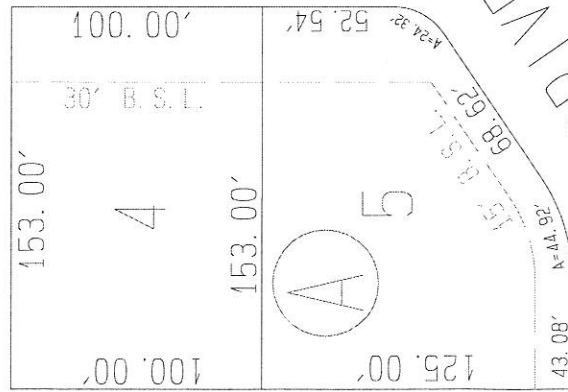


PLANTATION HILL ROAD

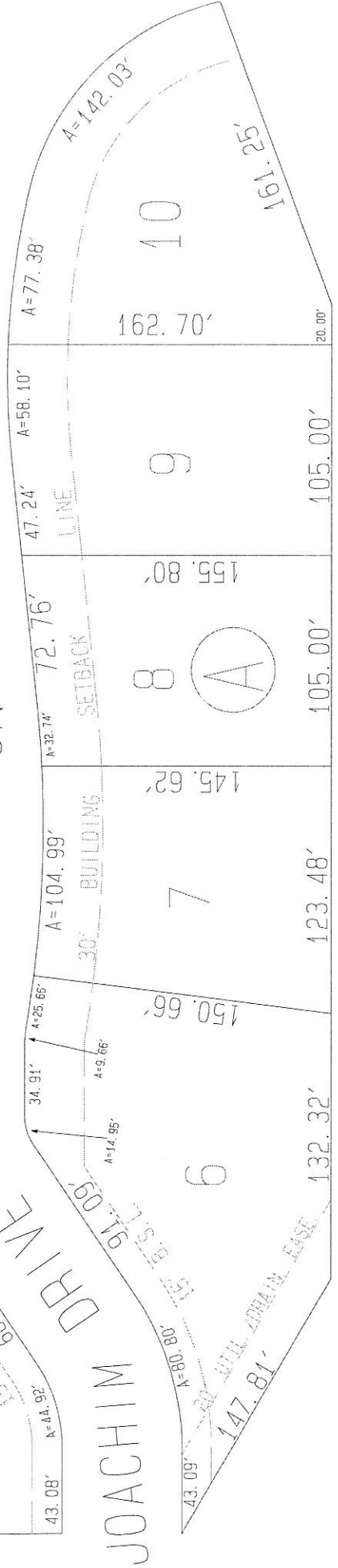
PLANTATION HILL - UNIT 2

PLAT #630, SUB. #3212

P.B. "E", PG. 24



PLANTATION HILL ROAD



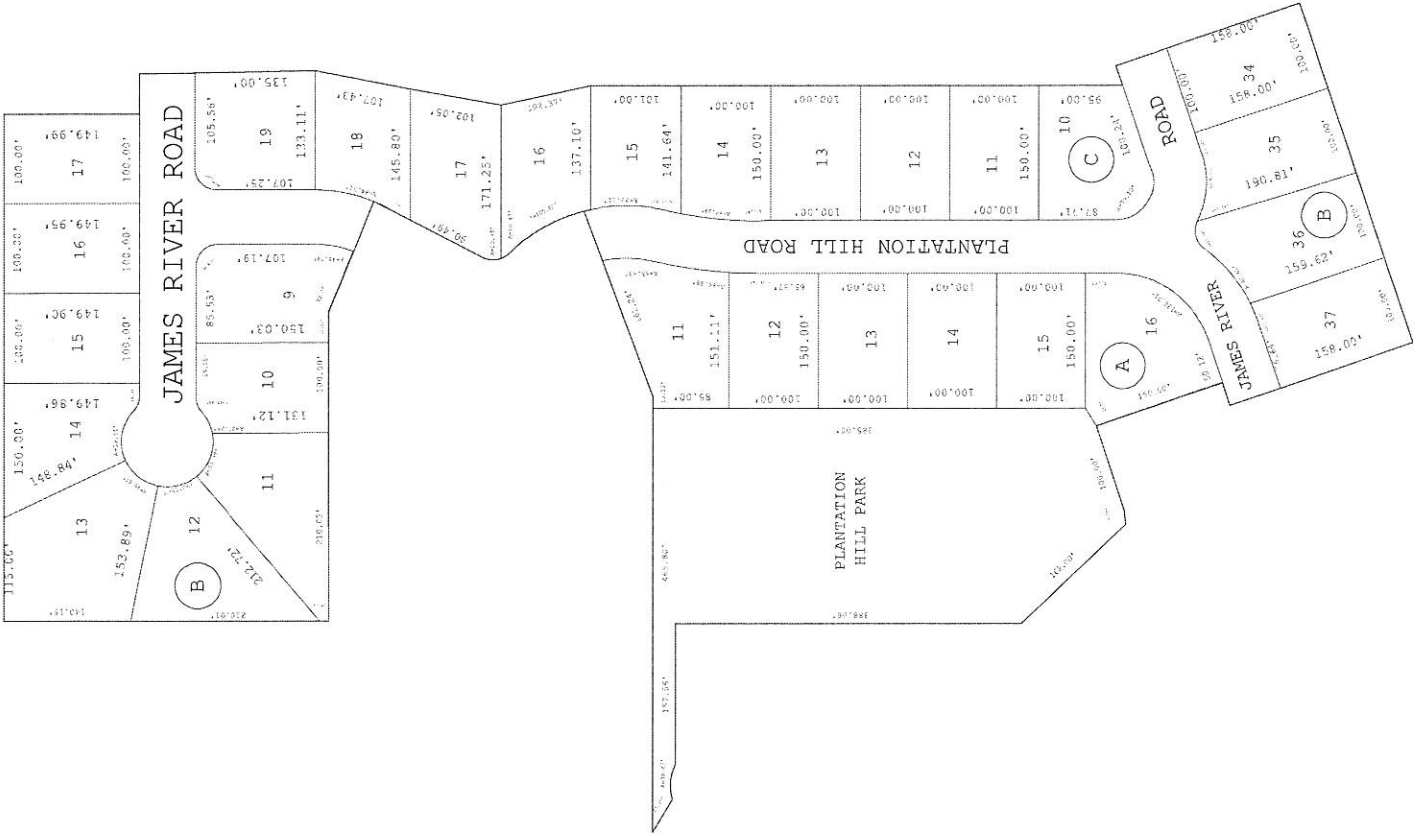
JOACHIM DRIVE

PLANTATION HILL - UNIT 3

PLAT#737

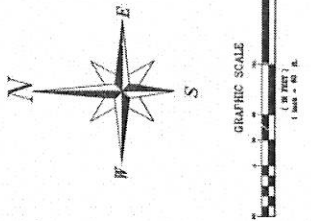
SUB.#3212

P.B."F" PG.53



# A FINAL PLAT OF PLANTATION HILL UNIT 4

BEING A SUBDIVISION OF A PORTION OF GOVERNMENT LOT 4,  
SECTION 4, TOWNSHIP 3 SOUTH, RANGE 29 WEST,  
CITY OF GULF BREEZE, SANTA ROSA COUNTY, FLORIDA  
MARCH, 1996



THE CITY OF GULF BREEZE, FLORIDA, HAS REVIEWED THIS PLAT AND HAS DETERMINED THAT IT IS IN ACCORDANCE WITH THE PLAT ACT AND THE PLAT ACT RULES AND REGULATIONS, AND HAS APPROVED THIS PLAT.

*[Signature]*  
CITY CLERK

*[Signature]*  
CITY COMMISSIONER

COUNTY CLERK'S CERTIFICATE - COUNTY OF SANTA ROSA

THE COUNTY CLERK OF THE COUNTY OF SANTA ROSA, FLORIDA, HAS REVIEWED THIS PLAT AND HAS DETERMINED THAT IT IS IN ACCORDANCE WITH THE PLAT ACT AND THE PLAT ACT RULES AND REGULATIONS, AND HAS APPROVED THIS PLAT.

*[Signature]*  
COUNTY CLERK

EXEMPTION - COUNTY OF SANTA ROSA

THE COUNTY CLERK OF THE COUNTY OF SANTA ROSA, FLORIDA, HAS REVIEWED THIS PLAT AND HAS DETERMINED THAT IT IS IN ACCORDANCE WITH THE PLAT ACT AND THE PLAT ACT RULES AND REGULATIONS, AND HAS APPROVED THIS PLAT.

*[Signature]*  
COUNTY CLERK

STATE OF FLORIDA - COUNTY OF SANTA ROSA

THE FOREGOING INSTRUMENT WAS ACKNOWLEDGED BEFORE ME THIS 13<sup>TH</sup> DAY OF MARCH, 1996, AT GULF BREEZE, FLORIDA, IN THE PRESENCE OF TWO WITNESSES AND THE INSTRUMENT WAS SIGNED BY THE PARTIES AND I HAVE RECORDED IT IN MY OFFICE.

*[Signature]*  
NOTARY PUBLIC - STATE OF FLORIDA

SURVEYOR'S CERTIFICATE

I, THE UNDERSIGNED SURVEYOR, HAVE REVIEWED THE PLAT AND HAVE DETERMINED THAT THE PLAT IS IN ACCORDANCE WITH THE PLAT ACT AND THE PLAT ACT RULES AND REGULATIONS, AND HAS APPROVED THIS PLAT.

*[Signature]*  
SURVEYOR

PLAT BOOK G PAGE 10

STATION	CHORD BEARING	CHORD DISTANCE	CHORD AREA
1	N 00° 00' 00" W	100.00	0.00
2	N 45° 00' 00" W	141.42	70.71
3	N 90° 00' 00" W	100.00	0.00
4	S 45° 00' 00" W	141.42	70.71
5	S 00° 00' 00" W	100.00	0.00
6	S 45° 00' 00" E	141.42	70.71
7	S 90° 00' 00" E	100.00	0.00
8	N 45° 00' 00" E	141.42	70.71
9	N 00° 00' 00" E	100.00	0.00
10	N 45° 00' 00" E	141.42	70.71
11	N 90° 00' 00" E	100.00	0.00
12	N 45° 00' 00" E	141.42	70.71
13	N 00° 00' 00" E	100.00	0.00
14	N 45° 00' 00" E	141.42	70.71
15	N 90° 00' 00" E	100.00	0.00
16	N 45° 00' 00" E	141.42	70.71
17	N 00° 00' 00" E	100.00	0.00
18	N 45° 00' 00" E	141.42	70.71
19	N 90° 00' 00" E	100.00	0.00
20	N 45° 00' 00" E	141.42	70.71
21	N 00° 00' 00" E	100.00	0.00
22	N 45° 00' 00" E	141.42	70.71
23	N 90° 00' 00" E	100.00	0.00
24	N 45° 00' 00" E	141.42	70.71
25	N 00° 00' 00" E	100.00	0.00
26	N 45° 00' 00" E	141.42	70.71
27	N 90° 00' 00" E	100.00	0.00
28	N 45° 00' 00" E	141.42	70.71
29	N 00° 00' 00" E	100.00	0.00
30	N 45° 00' 00" E	141.42	70.71
31	N 90° 00' 00" E	100.00	0.00
32	N 45° 00' 00" E	141.42	70.71
33	N 00° 00' 00" E	100.00	0.00
34	N 45° 00' 00" E	141.42	70.71
35	N 90° 00' 00" E	100.00	0.00
36	N 45° 00' 00" E	141.42	70.71
37	N 00° 00' 00" E	100.00	0.00
38	N 45° 00' 00" E	141.42	70.71
39	N 90° 00' 00" E	100.00	0.00
40	N 45° 00' 00" E	141.42	70.71
41	N 00° 00' 00" E	100.00	0.00
42	N 45° 00' 00" E	141.42	70.71
43	N 90° 00' 00" E	100.00	0.00
44	N 45° 00' 00" E	141.42	70.71
45	N 00° 00' 00" E	100.00	0.00
46	N 45° 00' 00" E	141.42	70.71
47	N 90° 00' 00" E	100.00	0.00
48	N 45° 00' 00" E	141.42	70.71
49	N 00° 00' 00" E	100.00	0.00
50	N 45° 00' 00" E	141.42	70.71



**NW** NORTHWEST FLORIDA ENGINEERING & SURVEYING, INC.  
A PROFESSIONAL SERVICE ORGANIZATION  
1000 W. 10th Street  
Tallahassee, Florida 32304  
Phone: 904-291-1111

UNRECORDED SUBDIVISION

PLANTATION HILL UNIT 4  
PLAT BOOK G, PAGE 10

GRAPHIC SCALE  
1 INCH = 40 FEET

LEGEND

- PLANTATION HILL UNIT 4
- PRIVATE PLANTATION LANE
- MIDDLE PLANTATION LANE
- PLANTATION HILL UNIT 3
- PLANTATION HILL UNIT 2
- PLANTATION HILL UNIT 1
- PLANTATION HILL UNIT 0
- PLANTATION HILL UNIT -1
- PLANTATION HILL UNIT -2
- PLANTATION HILL UNIT -3
- PLANTATION HILL UNIT -4
- PLANTATION HILL UNIT -5
- PLANTATION HILL UNIT -6
- PLANTATION HILL UNIT -7
- PLANTATION HILL UNIT -8
- PLANTATION HILL UNIT -9
- PLANTATION HILL UNIT -10
- PLANTATION HILL UNIT -11
- PLANTATION HILL UNIT -12
- PLANTATION HILL UNIT -13
- PLANTATION HILL UNIT -14
- PLANTATION HILL UNIT -15
- PLANTATION HILL UNIT -16
- PLANTATION HILL UNIT -17
- PLANTATION HILL UNIT -18
- PLANTATION HILL UNIT -19
- PLANTATION HILL UNIT -20
- PLANTATION HILL UNIT -21
- PLANTATION HILL UNIT -22
- PLANTATION HILL UNIT -23
- PLANTATION HILL UNIT -24

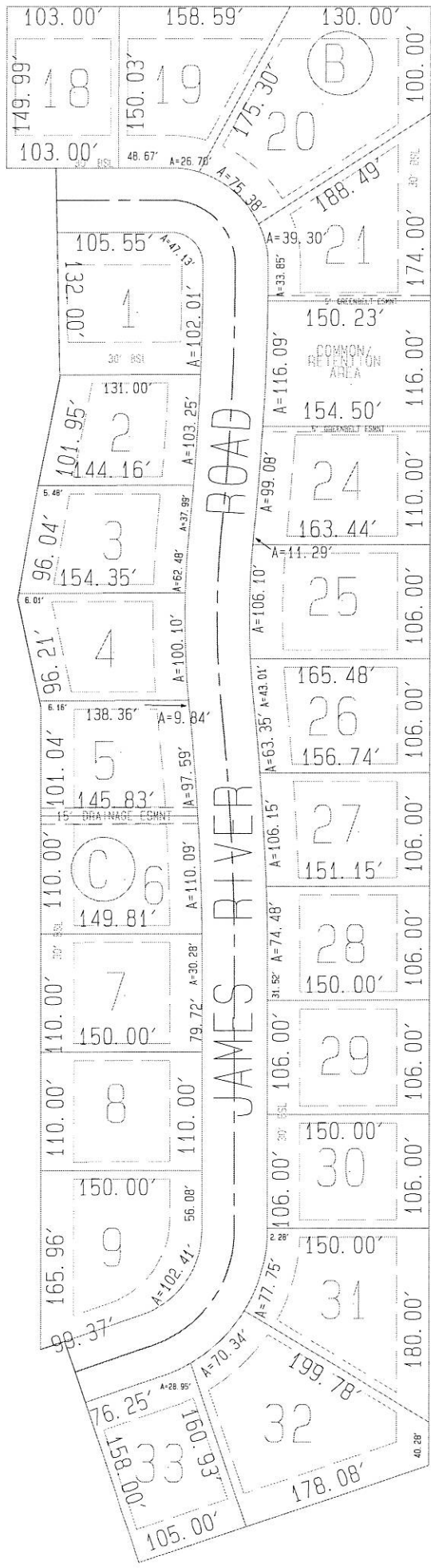
POINT OF BEGINNING

POINT OF COMMENCEMENT

UNPLATTED

UNPLATTED

UNPLATTED



PLANTATION HILL  
 UNIT 5  
 SUB. # 3212  
 PLAT # 857  
 P. B. " G " PG. 77