



**Building Performance Equipment, Inc.®**

Sustainable, Reliable and Energy Efficient Ventilation Systems

## **BPE 4 FAN CONTROLLER – 69**

CONTROLLER 69 PRO, INDEPENDENT PROGRAMS FOR FOUR DEVICES, DYNAMIC VPD, TEMPERATURE, HUMIDITY, SCHEDULING, CYCLES, LEVELS CONTROL, DATA APP, BLUETOOTH + WIFI

### **Introduction**

Welcome to the BPE UIS™ ecosystem, the most advance and versatile environmental control platform in the world! Choose from an expanding selection of equipment that can work together to achieve your ideal environment. Mix and match any four to connect to our smart controller to provide each with their own advance programming, tailored to your application. Our innovative system can finely optimize each equipment's output levels from 0 to 10 such as fan speed and light intensity, to precisely reach your target climate.

**MODELS** - **CONTROLLER 69 PRO (CTR69P)**

**EQUIPMENT CONTROLLED** - All UIS™ Devices, see [Compatibility List](#)

**NUMBER OF EQUIPMENT** - 4 Devices, Independent Programming

**CONNECTOR TYPE** - UIS, and includes two **MOLEX-TO-UIS ADAPTERS**

**CONTROL TYPE** - PWM 10 Levels

**PROGRAMS** - Temperature and Humidity Triggers, VPD Triggers, Timers, Cycles, Schedules, Advance Programs via App

**SETTINGS** - Max/Min Levels, Dynamic Transitions, Lock/Hide Display, F°/C°, Calibration, and More

**CLIMATE SENSORS** - Temperature and Humidity

**APP CONNECTION** - Bluetooth or Wi-Fi (2.4 Ghz)



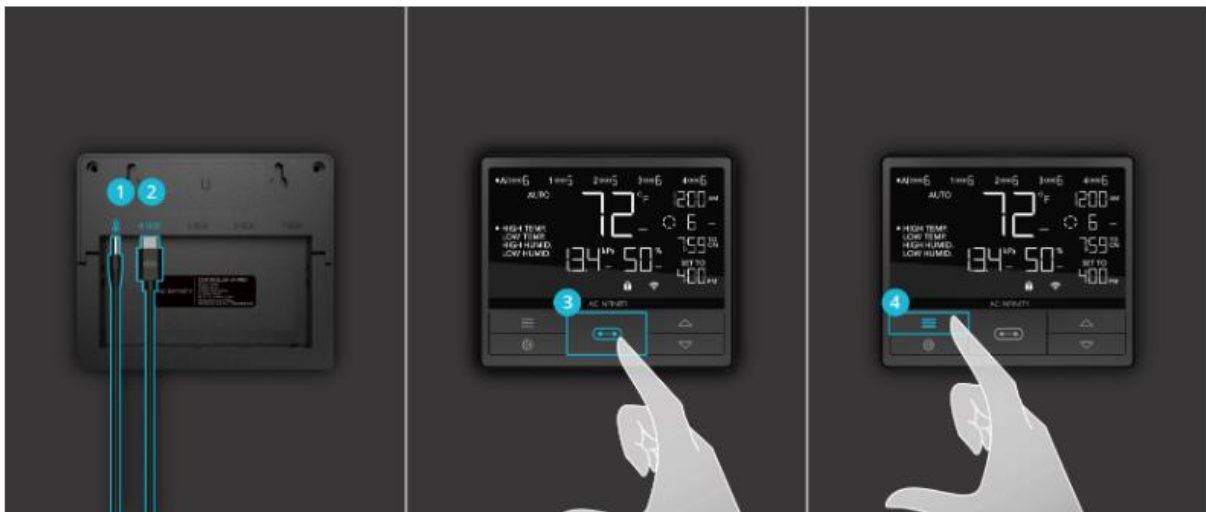
# Building Performance Equipment, Inc.®

Sustainable, Reliable and Energy Efficient Ventilation Systems



Control system can control 4 fans at the same time.

## Quick Start





# Building Performance Equipment, Inc.®

Sustainable, Reliable and Energy Efficient Ventilation Systems

1. Plug the temperature/humidity sensor into the designated port behind the controller.
2. Plug your first UIS device into one of the four ports behind the controller, which will also power the controller.
3. Press the "Port Button" until you reach the port that your device was plugged in. See below for diagram.
4. Press the "Mode Button" until you reach the desired program for your device to run. See below for Mode info.
5. Press the "Up/Down Button" to adjust your Mode's parameters, program will automatically start running.
6. Check for settings that may affect your programming, see below. Return to desired Mode to resume program.
7. Plug in another UIS device if needed, then repeat steps 3 to 6.

## Controller Diagram



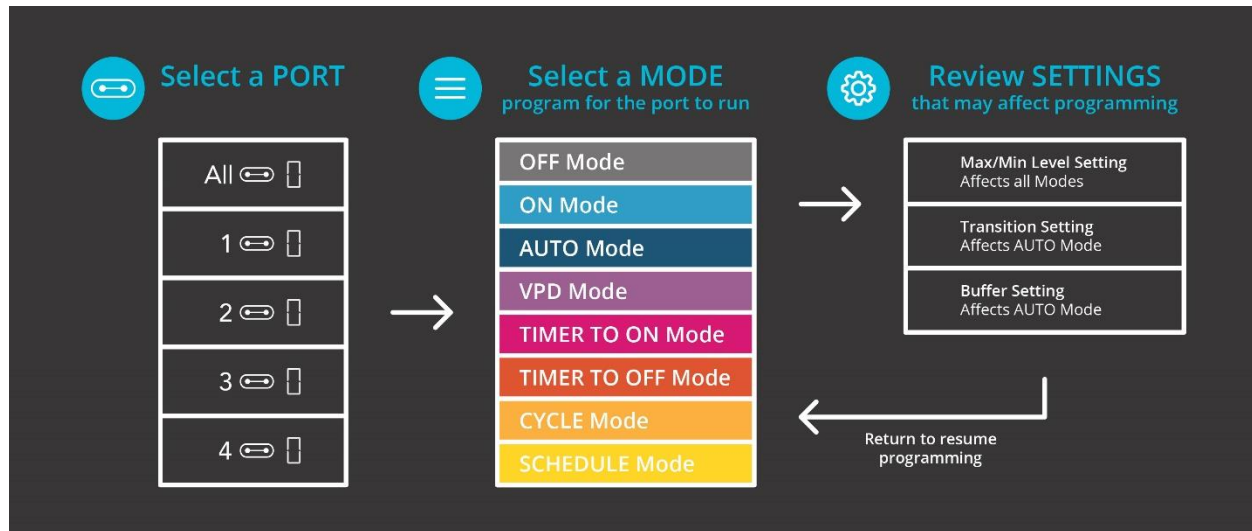
1. **Port Button** – Cycles through all of the connected devices.
2. **Mode Button** – Cycles through all of the controller's modes for that port.
3. **Setting Button** – Cycles through all of the controller's settings.
4. **Up/Down Buttons** – Adjusts the parameters of the mode or settings you are viewing.



# Building Performance Equipment, Inc.®

Sustainable, Reliable and Energy Efficient Ventilation Systems

## Programming Modes



- **OFF Mode** – Set the device to turn off.
- **ON Mode** – Set the device to run continuously at a level from 0 to 10.
- **AUTO Mode** – Set temperature and humidity triggers that will turn the device on or off.
- **VPD Mode** – Set VPD (vapor pressure deficit) triggers that will turn the device on or off.
- **TIMER TO ON Mode** – Set a one-time countdown that will turn the device on once it ends.
- **TIMER TO OFF Mode** – Set a one-time countdown that will turn the device off once it ends.
- **CYCLE Mode** – Set an on and off duration that your device will repeat continuously.
- **SCHEDULE Mode** – Set an on and off clock time that your device will repeat daily.

## Controller Settings

- **Max and Min Level Setting** – Set the maximum and minimum level a device can run at, which affects all modes.
- **Transition Setting** – Set the device to ramp up in levels gradually as the temperature, humidity, and VPD gets further away from your set target. Only affects AUTO Mode.
- **Buffer Setting** – Set an on/off band to prevent your device from turning off too quickly as the temperature, humidity, and VPD fluctuate around your trigger point. Only affects AUTO Mode.
- **Other Settings** – Other controller settings including switching between F° and C°, display brightness, sensor calibrations, and more.



# Building Performance Equipment, Inc.®

Sustainable, Reliable and Energy Efficient Ventilation Systems

## Alert Icons



1. **VPD Alert** – Flashes whenever either VPD mode triggers activate your device.
2. **Trigger Alert** – Flashes whenever the temperature, humidity, or VPD triggers *set in the app* activate your devices.
3. **Advance Programming** – Displays when an advance program set in the app is active.
4. **Timer Alert** – Flashes when a countdown has completed in the TIMER, CYCLE, or SCHEDULE Mode.
5. **Display Lock Alert** – Displays when you lock the controller.
6. **Bluetooth/WiFi** – Appears when the physical controller is connected to the app via Bluetooth or WiFi.
7. **Temperature/Humidity Alarm** – Flashes and beeps if the temperature/humidity meets the app trigger point.