



Building Performance Equipment, Inc.®

Sustainable, Reliable, and Energy Efficient Ventilation Systems



Model: BPE-CE-MIR-200i VLP unit – Very Low Profile (Air-to-Air Energy Recovery Ventilator)

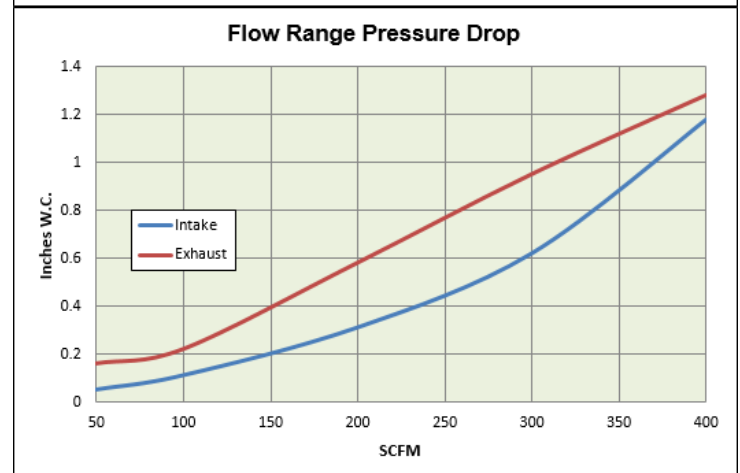
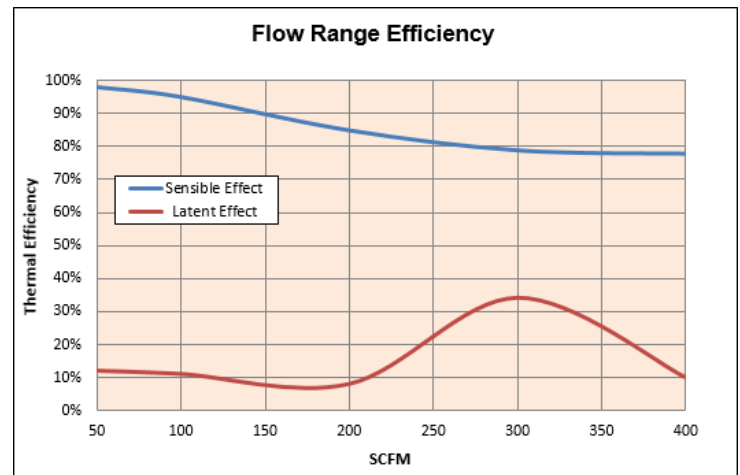
Model Number: BPE-CE-MIR-200i, Energy Recovery Ventilator (ERV)
Energy Transfer: Polymer Fixed Plate, Heat and Humidity Transfer
Air Flow Range: 60-200 CFM
Energy Efficiency Ratio (EER) – (Btu/W): (ARI 1060 at 95°) - Summer = 31.53
 (ARI 1060 at 10°) - Winter = 75.67

Net Weight: 60 lbs.
Dimensions: 8" W x 20" H
External Finish: Galvanized Steel Sheet
Typical Fan: Integral Fans, UL Listed
Power Source: 115 V - Single Phase – 60Hz
Power Consumption 28 W @ 226 CFM/Fan

Note: For use in conditions below -10°F and/or 40% relative humidity. Contact BPE for application assistance. Interior aligned with Reflectix Semi-Rigid Insulations (R-5 RMAX). ASTM E84-01 Flame Spread Classification = 25, Smoke-Developed Classification = 30. Integral drain for very wet applications.

Note: BPE-ERMS can be purchased without fans for locations with existing fans

Includes: (2) Merv 8 HEPA Filters, (2) high-efficiency fans UL 507 Listed – Standard for Electric Fans, (2) Speed Controllers, and high-efficiency energy recovery module with single power cord included. High-performance 6-inch duct attachments and installation instructions.



**NO ELECTRICIAN NEEDED
SIMPLY PLUG AND PLAY!**

ARI 1060 Testing

Project Name: _____

Date: _____

Location: _____

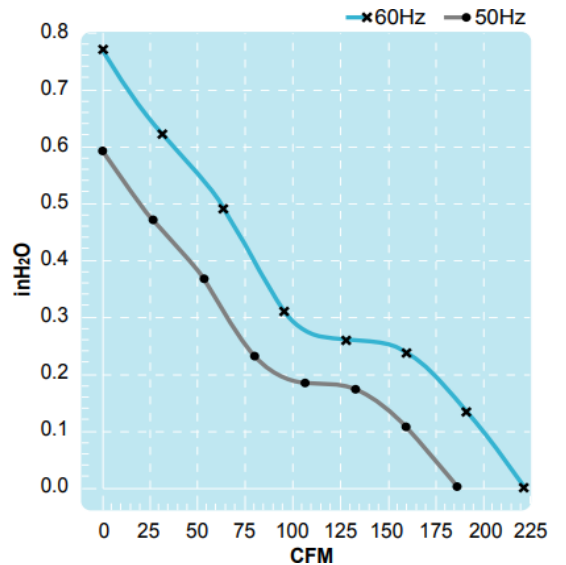
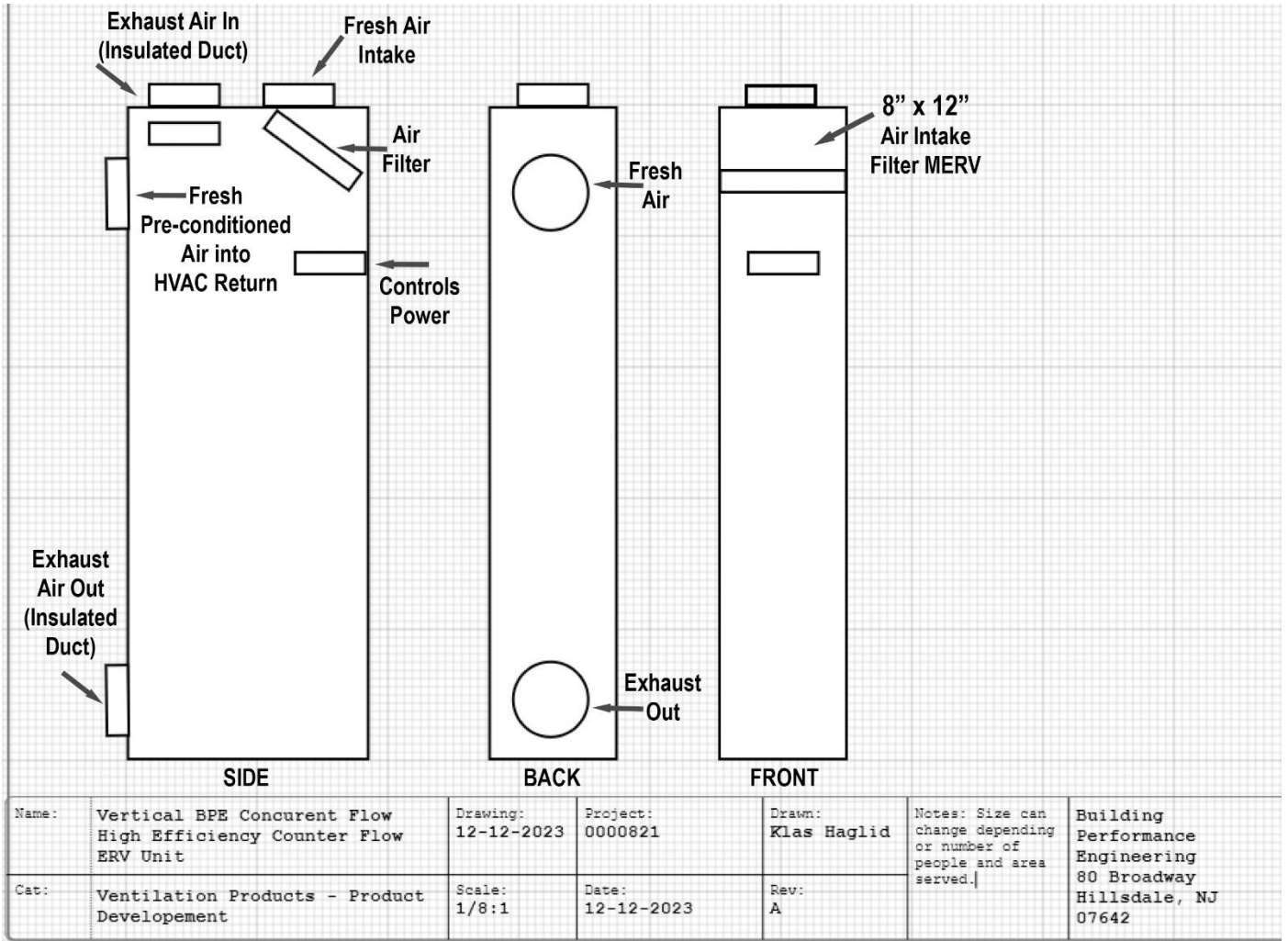
Application: _____

Contractor: _____

Design Conditions	Outdoor Air				Indoor Air				Thermal Efficiency	
	CFM	In. W.C.	°F WB	°F DB	CFM	In. W.C.	°F WB	°F DB	Sensible (%)	Latent (%)
Summer										
Winter										

Component	Intake (in. W.C.)	Exhaust (in. W.C.)	Notes
Louver			Drain Connection (Left, Right, Field Installed):
Filter			
Duct work			
ERV			
Diffuser			Regenerative Condensate Return (Wick, Gap or Total Seal – No Latent 0.0%):
Total Static			
Add 25% - Safety Factor			
Fan Static			Special Considerations:
Fan CFM			
Fan			
Manufacture			
Fan Model			

Note: Latent component can be adjusted or completely closed off for a sensible-only application. Please discuss with factory to adjust as needed.



Filters Are Interchangeable Between Fresh Air And Exhaust

- Merv 6 (Exhaust - Recommended)
- Merv 8 (Fresh Air Supply – Optional)
- Additional fans with plug-in electric connection

- Cost \$12.50 each plus shipping
- Cost \$ 14.95 each plus shipping
- Cost \$55.60 each plus shipping