



Green Leaf Lab

12025 NE Marx St. Portland, OR 97220
503-253-3511 / www.greenleaflabs.com
License#: 10029074C70

Regulatory Compliance Testing (OAR-333-007) Official Report

Hawaii Haze

Sample ID: G9J0330-02 Matrix: Industrial Hemp
Test ID: 1011400
Source ID: 2019-0001
Date Sampled: 10/03/19 Date Accepted: 10/03/19

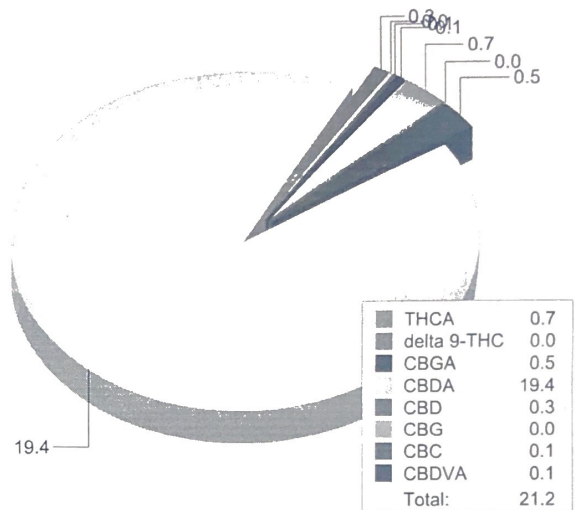
Gold Coast Ranch II

Potency Analysis

Date/Time Extracted: 10/15/19 14:55 Analysis Method/SOP: 215 Batch Identification: 1942035

	LOQ (%)	% by Wt.	mg/g
Total THC	0.0099	0.6460	6.46
Total CBD	0.0091	17.29	172.9
THCA	0.0032	0.6833	6.833
delta 9-THC	0.0099	0.0468	0.468
delta 8-THC	0.0049	< LOQ	< LOQ
Exo-THC	0.0046	< LOQ	< LOQ
THCV	0.0055	< LOQ	< LOQ
THCVA	0.0021	< LOQ	< LOQ
CBD	0.0068	0.2559	2.559
CBDA	0.0091	19.42	194.2
CBDV	0.0055	< LOQ	< LOQ
CBDVA	0.0018	0.1054	1.054
CBN	0.0033	< LOQ	< LOQ
CBG	0.0009	0.0450	0.45
CBGA	0.0009	0.5354	5.354
CBC	0.0098	0.0858	0.858

Cannabinoids Profile



Water Activity

Date/Time Extracted: 10/17/19 16:49 Analysis Method/SOP: 102

Water Activity: 0.56 at 24°C

Moisture

Date/Time Extracted: 10/16/19 16:16 Analysis Method/SOP: 103

Moisture: 8.29 %

Potency Results are reported on a dry weight basis.

Total THC = delta 9-THC + (THCA * 0.877)

Total CBD = CBD + (CBDA * 0.877)

For Potency only delta 9-THC, THCA, CBD, CBDA are ORELAP accredited analytes.

Water Activity Action Level is 0.65. Results above 0.65 fail state testing requirements and will be highlighted Red.

Eric Wendt
Chief Science Officer - 10/17/2019



Green Leaf Lab

12025 NE Marx St. Portland, OR 97220
503-253-3511 / www.greenleaflabs.com
License#: 10029074C70

Regulatory Compliance Testing (OAR-333-007) Official Report

Hawaii Haze

Sample ID: G9J0330-02

Matrix: Industrial Hemp

Test ID: 1011400

Source ID: 2019-0001

Date Sampled: 10/03/19

Date Accepted: 10/03/19

Gold Coast Ranch II

Terpene Analysis					
Date/Time Extracted: 10/15/19 14:55			Analysis Method/SOP: 204		
Monoterpenes	%	mg/g	Monoterpenes	%	mg/g
Camphene	0.005915	0.05915	Camphor	< LOQ	< LOQ
3-Carene	< LOQ	< LOQ	alpha-Cedrene	< LOQ	< LOQ
Cedrol	< LOQ	< LOQ	Endo-fenchyl alcohol	0.01207	0.1207
Eucalyptol	< LOQ	< LOQ	Fenchone	< LOQ	< LOQ
Geraniol	< LOQ	< LOQ	Geranyl acetate	< LOQ	< LOQ
Hexahydrothymol	< LOQ	< LOQ	Isoborneol	< LOQ	< LOQ
Isopulegol	< LOQ	< LOQ	Limonene	0.1272	1.272
Linalool	0.02800	0.28	p-Mentha-1,5-diene	< LOQ	< LOQ
beta-Myrcene	2.431	24.31	Ocimene	0.05562	0.5562
alpha-Pinene	0.2816	2.816	beta-Pinene	0.1155	1.155
Pulegone	< LOQ	< LOQ	Sabinene	< LOQ	< LOQ
Sabinene hydrate	< LOQ	< LOQ	gamma-Terpinene	< LOQ	< LOQ
alpha-Terpinene	< LOQ	< LOQ	Terpineol	0.01556	0.1556
Terpinolene	< LOQ	< LOQ	B Y-Terpineol	< LOQ	< LOQ
Nerol	< LOQ	< LOQ	A-Terpineol	0.01556	0.1556
Borneol	< LOQ	< LOQ	Ocimene isomer II	0.05562	0.5562
Ocimene isomer I	< LOQ	< LOQ			
Sesquiterpenes	%	mg/g	Sesquiterpenes	%	mg/g
alpha-Bisabolol	0.03802	0.3802	beta-Caryophyllene	0.05582	0.5582
Caryophyllene Oxide	< LOQ	< LOQ	Guaiol	0.04242	0.4242
alpha-Humulene	0.01602	0.1602	trans-Nerolidol	< LOQ	< LOQ
Valencene	< LOQ	< LOQ	cis-Nerolidol	0.1161	1.161
Total Terpenes	3.341	33.41			

<LOQ - Results below the Limit of Quantitation - Terpenes profile/analysis are not accredited to ORELAP TNI 2009 Quality Standards.

Eric Wendt
Chief Science Officer - 10/17/2019