

## CONSOLIDATED TEST RESULTS SUMMARY

Please see the following pages for full test results.

BULK SKU	BATCH #	<b>LOQ:</b> Limit Of Quantitation <b>LOD:</b> Limit Of Detection 1 g = 10 <sup>-3</sup> kg = 10 <sup>3</sup> mg = 10 <sup>6</sup> µg 1 mg/kg = 1 ppm = 1000 ppb	
PRODUCT NAME	SERVING SIZE		
LABORATORY :	OREGON ACCREDITATION: OR100028		
POTENCY	PER SERVING	PER GRAM	Percent
Cannabidiol (CBD)	mg/serving	mg/g	%
Total THC (d9-THC, THCA)	mg/serving	mg/g	%
Cannabigerol (CBG)	mg/serving	mg/g	%
Cannabinol (CBN)	mg/serving	mg/g	%
Cannabichromene (CBC)	mg/serving	mg/g	%
Tetrahydrocannabinolic Acid (THCA)	mg/serving	mg/g	%
Delta-9-THC (d9-THC)	mg/serving	mg/g	%
Delta-8-THC (d8-THC)	mg/serving	mg/g	%
HEAVY METALS	PER SERVING	PER GRAM	REGULATORY ACTION LEVEL
Arsenic	µg/serving	µg/g	10 µg/day <sup>[1]</sup>
Cadmium	µg/serving	µg/g	4.1 µg/day <sup>[1]</sup>
Lead	µg/serving	µg/g	6 µg/day <sup>[1]</sup>
Mercury	µg/serving	µg/g	2 µg/day <sup>[1]</sup>
PESTICIDES	REGULATORY ACTION LEVEL		
None of the other 59 pesticides tested found above limit of detection in the sample.			10 ppb <sup>[1]</sup>
RESIDUAL SOLVENTS	Results	REGULATORY ACTION LEVEL	
Ethanol	µg/g	50,000 mg/day	
Ethylene Oxide	µg/g	50 µg/g	
None of the 34 residual solvents tested found above limit of quantitation in the sample.			
MICROBIAL	PASS/FAIL		
Yeast & Mold	Pass		
Coliform	Pass		
TERPENES	% OF SAMPLE		
Farnesene	%		
β-Caryophyllene	%		
α-Bisabolol	%		
Guaiol	%		
Humulene	%		
Caryophyllene Oxide	%		



1. American Herbal Pharmacopoeia. (2014). Cannabis Inflorescence: Standards of Identity, Analysis, and Quality Control. Washington DC: AHP.



12423 NE Whitaker Way  
Portland, OR 97230  
503-254-1794



**Report Number:** 23-009822/D004.R000  
**Report Date:** 09/05/2023  
**ORELAP#:** OR100028  
**Purchase Order:** 2601189  
**Received:** 08/17/23 14:39

**Customer:** Etz Hayim Holdings  
**Product identity:** FORM-TN.O.FS.SL50-FH55  
**Client/Metric ID:** .  
**Laboratory ID:** 23-009822-0001

### Summary

#### Potency:

Analyte per 1g	Result	Limits	Units	Status	
CBC per 1g	4.43		mg/1g		CBD-Total per Serving Size 56.6 mg/1g
CBD per 1g	56.6		mg/1g		
CBDV per 1g	0.628		mg/1g		THC-Total per Serving Size 1.96 mg/1g
CBE per 1g	0.979		mg/1g		(Reported in milligrams per serving)
CBG per 1g	2.33		mg/1g		
CBL per 1g	0.356		mg/1g		
CBN per 1g	0.0363		mg/1g		
CBT per 1g	1.69		mg/1g		
Δ9-THC per 1g	1.96		mg/1g		

#### Residual Solvents:

Analyte	Result (µg/g)	Limits (µg/g)	Status
Ethylene oxide	36.5	50.0	pass

#### Pesticides:

All analytes passing and less than LOQ.

#### Terpenes:

Analyte	Percent by weight	Percent of Total	Analyte	Percent by weight	Percent of Total
β-Caryophyllene	0.107	20.38%	farnesene	0.0992	18.90%
(R)-(+)-Limonene	0.0776	14.78%	(-)-caryophyllene oxide	0.0706	13.45%
α-Bisabolol	0.0447	8.51%	β-Myrcene	0.0435	8.29%
(-)-Guaiaol	0.0422	8.04%	Humulene	0.0405	7.71%
<b>Total Terpenes</b>	<b>0.525</b>	<b>100.00%</b>			

#### Metals:

Less than LOQ for all analytes.

#### Microbiology:

Less than LOQ for all analytes.



12423 NE Whitaker Way  
 Portland, OR 97230  
 503-254-1794



**Report Number:** 23-009822/D004.R000  
**Report Date:** 09/05/2023  
**ORELAP#:** OR100028  
**Purchase Order:** 2601189  
**Received:** 08/17/23 14:39

**Customer:** Etz Hayim Holdings  
 16427 NE Airport Way  
 PORTLAND 97230  
 United States of America (USA)

**Product identity:** FORM-TN.O.FS.SL50-FH55

**Client/Metric ID:** .

**Sample Date:**

**Laboratory ID:** 23-009822-0001

**Evidence of Cooling:** No

**Temp:** 25.2 °C

**Relinquished by:** client

**Serving Size #1:** 1 g

### Sample Results

Potency per 1g	Method: J AOAC 2015 V98-6 (mod) <sup>b</sup>	Units mg/se	Batch: 2310184	Analyze: 8/18/23 11:28:00 PM	
Analyte	Result	Limits	Units	LOQ	Notes
CBC per 1g	4.43		mg/1g	0.0319	
CBC-A per 1g	< LOQ		mg/1g	0.0319	
CBC-Total per 1g	4.43		mg/1g	0.0598	
CBD per 1g	56.6		mg/1g	0.319	
CBD-A per 1g	< LOQ		mg/1g	0.0319	
CBD-Total per 1g	56.6		mg/1g	0.347	
CBDV per 1g	0.628		mg/1g	0.0319	
CBDV-A per 1g	< LOQ		mg/1g	0.0319	
CBDV-Total per 1g	0.628		mg/1g	0.0595	
CBE per 1g	0.979		mg/1g	0.0319	
CBG per 1g	2.33		mg/1g	0.0319	
CBG-A per 1g	< LOQ		mg/1g	0.0319	
CBG-Total per 1g	2.33		mg/1g	0.0595	
CBL per 1g	0.356		mg/1g	0.0319	
CBL-A per 1g	< LOQ		mg/1g	0.0319	
CBL-Total per 1g	0.356		mg/1g	0.0598	
CBN per 1g	0.0363		mg/1g	0.0319	
CBT per 1g	1.69		mg/1g	0.0319	
Δ8-THCV per 1g	< LOQ		mg/1g	0.0319	
Δ10-THC-9R per 1g	< LOQ		mg/1g	0.0319	
Δ10-THC-9S per 1g	< LOQ		mg/1g	0.0319	
Δ10-THC-Total per 1g	< LOQ		mg/1g	0.0637	
Δ8-THC per 1g	< LOQ		mg/1g	0.0319	
Δ9-THC per 1g	1.96		mg/1g	0.0319	
delta-9-THCP per 1g	< LOQ		mg/1g	0.0319	
exo-THC per 1g	< LOQ		mg/1g	0.0319	
THC-A per 1g	< LOQ		mg/1g	0.0319	
THC-Total per 1g	1.96		mg/1g	0.0598	
THCV per 1g	< LOQ		mg/1g	0.0319	
THCV-A per 1g	< LOQ		mg/1g	0.0319	



12423 NE Whitaker Way  
Portland, OR 97230  
503-254-1794



**Report Number:** 23-009822/D004.R000  
**Report Date:** 09/05/2023  
**ORELAP#:** OR100028  
**Purchase Order:** 2601189  
**Received:** 08/17/23 14:39

Potency per 1g      **Method:** J AOAC 2015 V98-6 (mod)<sup>P</sup>      **Units mg/se** **Batch:** 2310184      **Analyze:** 8/18/23 11:28:00 PM

Analyte	Result	Limits	Units	LOQ	Notes
THCV-Total per 1g	< LOQ		mg/1g	0.0598	
Total Cannabinoids per 1g	69.0		mg/1g		

**Microbiology**

Analyte	Result	Limits	Units	LOQ	Batch	Analyzed Method	Status	Notes
E.coli	< LOQ		cfu/g	10	2310429	08/31/23 AOAC 991.14 (Petrifilm) <sup>P</sup>		
Total Coliforms	< LOQ		cfu/g	10	2310429	08/31/23 AOAC 991.14 (Petrifilm) <sup>P</sup>		
Mold (RAPID Petrifilm)	< LOQ		cfu/g	10	2310430	08/31/23 AOAC 2014.05 (RAPID) <sup>P</sup>		
Yeast (RAPID Petrifilm)	< LOQ		cfu/g	10	2310430	08/31/23 AOAC 2014.05 (RAPID) <sup>P</sup>		

**Solvents**      **Method:** Residual Solvents by GC/MS<sup>P</sup>      **Units µg/g** **Batch** 2310573      **Analyze** 09/01/23 12:30 PM

Analyte	Result	Limits	LOQ	Status	Notes	Analyte	Result	Limits	LOQ	Status	Notes
1,4-Dioxane	< LOQ	380	100	pass		2-Butanol	< LOQ	5000	200	pass	
2-Ethoxyethanol	< LOQ	160	30.0	pass		2-Methylbutane (Isopentane)	< LOQ		200		
2-Methylpentane	< LOQ		30.0			2-Propanol (IPA)	< LOQ	5000	200	pass	
2,2-Dimethylbutane	< LOQ		30.0			2,2-Dimethylpropane (neo-pentane)	< LOQ		200		
2,3-Dimethylbutane	< LOQ		30.0			3-Methylpentane	< LOQ		30.0		
Acetone	< LOQ	5000	200	pass		Acetonitrile	< LOQ	410	100	pass	
Benzene	< LOQ	2.00	1.00	pass		Butanes (sum)	< LOQ	5000	400	pass	
Cyclohexane	< LOQ	3880	200	pass		Ethanol	< LOQ		200		
Ethyl acetate	< LOQ	5000	200	pass		Ethyl benzene	< LOQ		200		
Ethyl ether	< LOQ	5000	200	pass		Ethylene glycol	< LOQ	620	200	pass	
Ethylene oxide	36.5	50.0	20.0	pass		Hexanes (sum)	< LOQ	290	150	pass	
Isopropyl acetate	< LOQ	5000	200	pass		Isopropylbenzene (Cumene)	< LOQ	70.0	30.0	pass	
m,p-Xylene	< LOQ		200			Methanol	< LOQ	3000	200	pass	
Methylene chloride	< LOQ	600	60.0	pass		Methylpropane (Isobutane)	< LOQ		200		
n-Butane	< LOQ		200			n-Heptane	< LOQ	5000	200	pass	
n-Hexane	< LOQ		30.0			n-Pentane	< LOQ		200		
o-Xylene	< LOQ		200			Pentanes (sum)	< LOQ	5000	600	pass	
Propane	< LOQ	5000	200	pass		Tetrahydrofuran	< LOQ	720	100	pass	
Toluene	< LOQ	890	100	pass		Total Xylenes	< LOQ		400		
Total Xylenes and Ethyl benzene	< LOQ	2170	600	pass							



12423 NE Whitaker Way  
Portland, OR 97230  
503-254-1794

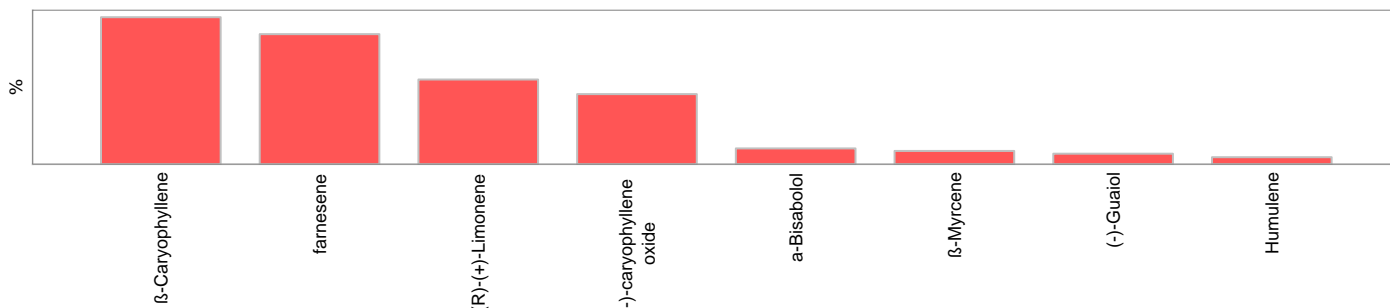


**Report Number:** 23-009822/D004.R000  
**Report Date:** 09/05/2023  
**ORELAP#:** OR100028  
**Purchase Order:** 2601189  
**Received:** 08/17/23 14:39

Pesticides											
Method: AOAC 2007.01 & EN 15662 (mod) <sup>b</sup>											
Units mg/kg Batch 2310519 Analyze 08/31/23 11:57 AM											
Analyte	Result	Limits	LOQ	Status	Notes	Analyte	Result	Limits	LOQ	Status	Notes
Abamectin <sup>‡</sup>	< LOQ	0.50	0.250	pass		Acephate <sup>‡</sup>	< LOQ	0.40	0.200	pass	
Acequinocyl <sup>‡</sup>	< LOQ	2.0	1.00	pass		Acetamiprid <sup>‡</sup>	< LOQ	0.20	0.100	pass	
Aldicarb <sup>‡</sup>	< LOQ	0.40	0.200	pass		Azoxystrobin <sup>‡</sup>	< LOQ	0.20	0.100	pass	
Bifentazate <sup>‡</sup>	< LOQ	0.20	0.100	pass		Bifenthrin <sup>‡</sup>	< LOQ	0.20	0.100	pass	
Boscalid <sup>‡</sup>	< LOQ	0.40	0.200	pass		Carbaryl <sup>‡</sup>	< LOQ	0.20	0.100	pass	
Carbofuran <sup>‡</sup>	< LOQ	0.20	0.100	pass		Chlorantraniliprole <sup>‡</sup>	< LOQ	0.20	0.100	pass	
Chlorfenapyr <sup>‡</sup>	< LOQ	1.0	0.500	pass		Chlorpyrifos <sup>‡</sup>	< LOQ	0.20	0.100	pass	
Clofentezine <sup>‡</sup>	< LOQ	0.20	0.100	pass		Cyfluthrin <sup>‡</sup>	< LOQ	1.0	0.500	pass	
Cypermethrin <sup>‡</sup>	< LOQ	1.0	0.500	pass		Daminozide <sup>‡</sup>	< LOQ	1.0	0.500	pass	
Diazinon <sup>‡</sup>	< LOQ	0.20	0.100	pass		Dichlorvos <sup>‡</sup>	< LOQ	1.0	0.500	pass	
Dimethoate <sup>‡</sup>	< LOQ	0.20	0.100	pass		Ethoprophos <sup>‡</sup>	< LOQ	0.20	0.100	pass	
Etofenprox <sup>‡</sup>	< LOQ	0.40	0.200	pass		Etoxazole <sup>‡</sup>	< LOQ	0.20	0.100	pass	
Fenoxycarb <sup>‡</sup>	< LOQ	0.20	0.100	pass		Fenpyroximate <sup>‡</sup>	< LOQ	0.40	0.200	pass	
Fipronil <sup>‡</sup>	< LOQ	0.40	0.200	pass		Fonicamid <sup>‡</sup>	< LOQ	1.0	0.400	pass	
Fludioxonil <sup>‡</sup>	< LOQ	0.40	0.200	pass		Hexythiazox <sup>‡</sup>	< LOQ	1.0	0.400	pass	
Imazalil <sup>‡</sup>	< LOQ	0.20	0.100	pass		Imidacloprid <sup>‡</sup>	< LOQ	0.40	0.200	pass	
Kresoxim-methyl <sup>‡</sup>	< LOQ	0.40	0.200	pass		Malathion <sup>‡</sup>	< LOQ	0.20	0.100	pass	
Metalaxyl <sup>‡</sup>	< LOQ	0.20	0.100	pass		Methiocarb <sup>‡</sup>	< LOQ	0.20	0.100	pass	
Methomyl <sup>‡</sup>	< LOQ	0.40	0.200	pass		MGK-264 <sup>‡</sup>	< LOQ	0.20	0.100	pass	
Myclobutanil <sup>‡</sup>	< LOQ	0.20	0.100	pass		Naled <sup>‡</sup>	< LOQ	0.50	0.250	pass	
Oxamyl <sup>‡</sup>	< LOQ	1.0	0.500	pass		Paclotbutrazole <sup>‡</sup>	< LOQ	0.40	0.200	pass	
Parathion-Methyl <sup>‡</sup>	< LOQ	0.20	0.100	pass		Permethrin <sup>‡</sup>	< LOQ	0.20	0.100	pass	
Phosmet <sup>‡</sup>	< LOQ	0.20	0.100	pass		Piperonyl butoxide <sup>‡</sup>	< LOQ	2.0	1.00	pass	
Prallethrin <sup>‡</sup>	< LOQ	0.20	0.100	pass		Propiconazole <sup>‡</sup>	< LOQ	0.40	0.200	pass	
Propoxur <sup>‡</sup>	< LOQ	0.20	0.100	pass		Pyrethrin I (total) <sup>‡</sup>	< LOQ	1.0	0.500	pass	
Pyridaben <sup>‡</sup>	< LOQ	0.20	0.100	pass		Spinosad <sup>‡</sup>	< LOQ	0.20	0.100	pass	
Spiromesifen <sup>‡</sup>	< LOQ	0.20	0.100	pass		Spirotetramat <sup>‡</sup>	< LOQ	0.20	0.100	pass	
Spiroxamine <sup>‡</sup>	< LOQ	0.40	0.200	pass		Tebuconazole <sup>‡</sup>	< LOQ	0.40	0.200	pass	
Thiacloprid <sup>‡</sup>	< LOQ	0.20	0.100	pass		Thiamethoxam <sup>‡</sup>	< LOQ	0.20	0.100	pass	
Trifloxystrobin <sup>‡</sup>	< LOQ	0.20	0.100	pass							



Terpenes				Method: J AOAC 2015 V98-6	Units %	Batch 2310570	Analyze 08/31/23 07:22 PM		
Analyte	Result	LOQ	% of Total	Notes	Analyte	Result	LOQ	% of Total	Notes
β-Caryophyllene	0.107	0.019	20.381%		farnesene	0.0992	0.019	18.8952%	
(R)-(+)-Limonene	0.0776	0.019	14.7810%		(-)-caryophyllene oxide	0.0706	0.019	13.4476%	
α-Bisabolol	0.0447	0.019	8.5143%		β-Myrcene	0.0435	0.019	8.2857%	
(-)-Guaïol	0.0422	0.019	8.0381%		Humulene	0.0405	0.019	7.7143%	
valencene	< LOQ	0.019	0.00%		Linalool	< LOQ	0.019	0.00%	
(-)-β-Pinene	< LOQ	0.019	0.00%		(±)-trans-Nerolidol	< LOQ	0.019	0.00%	
Geraniol	< LOQ	0.019	0.00%		(+)-fenchol	< LOQ	0.019	0.00%	
trans-β-Ocimene	< LOQ	0.012	0.00%		Isoborneol	< LOQ	0.019	0.00%	
γ-Terpinene	< LOQ	0.019	0.00%		Sabinene hydrate	< LOQ	0.019	0.00%	
nerol	< LOQ	0.019	0.00%		(±)-cis-Nerolidol	< LOQ	0.019	0.00%	
(+)-Borneol	< LOQ	0.019	0.00%		Menthol	< LOQ	0.019	0.00%	
Terpinolene	< LOQ	0.019	0.00%		(+)-Pulegone	< LOQ	0.019	0.00%	
α-pinene	< LOQ	0.019	0.00%		(±)-fenchone	< LOQ	0.019	0.00%	
(-)-α-Terpineol	< LOQ	0.019	0.00%		Geranyl acetate	< LOQ	0.019	0.00%	
(±)-Camphor	< LOQ	0.019	0.00%		(-)-Isopulegol	< LOQ	0.019	0.00%	
(+)-Cedrol	< LOQ	0.019	0.00%		α-cedrene	< LOQ	0.019	0.00%	
α-phellandrene	< LOQ	0.019	0.00%		α-Terpinene	< LOQ	0.019	0.00%	
Camphene	< LOQ	0.019	0.00%		cis-β-Ocimene	< LOQ	0.006	0.00%	
d-3-Carene	< LOQ	0.019	0.00%		Eucalyptol	< LOQ	0.019	0.00%	
p-Cymene	< LOQ	0.019	0.00%		Sabinene	< LOQ	0.019	0.00%	
<b>Total Terpenes</b>	<b>0.525</b>								


**Metals**

Analyte	Result	Limits	Units	LOQ	Batch	Analyzed Method	Status	Notes
Arsenic <sup>‡</sup>	< LOQ	0.200	mg/kg	0.0642	2310604	09/01/23 AOAC 2013.06 (mod.) <sup>p</sup>	pass	
Cadmium <sup>‡</sup>	< LOQ	0.200	mg/kg	0.0642	2310604	09/01/23 AOAC 2013.06 (mod.) <sup>p</sup>	pass	
Lead <sup>‡</sup>	< LOQ	0.500	mg/kg	0.0642	2310604	09/01/23 AOAC 2013.06 (mod.) <sup>p</sup>	pass	
Mercury <sup>‡</sup>	< LOQ	0.100	mg/kg	0.0321	2310604	09/01/23 AOAC 2013.06 (mod.) <sup>p</sup>	pass	



12423 NE Whitaker Way  
Portland, OR 97230  
503-254-1794



**Report Number:** 23-009822/D004.R000  
**Report Date:** 09/05/2023  
**ORELAP#:** OR100028  
**Purchase Order:** 2601189  
**Received:** 08/17/23 14:39

**Abbreviations**

**Limits:** Action Levels per OAR-333-007-0400, OAR-333-007-0210, OAR-333-007-0220, CCR title 16-division 42. BCC-section 5723

**Limit(s) of Quantitation (LOQ):** The minimum levels, concentrations, or quantities of a target variable (e.g., target analyte) that can be reported with a specified degree of confidence.

Ⓟ = ISO/IEC 17025:2017 accredited method.

Ⓜ = TNI accredited analyte.

**Units of Measure**

cfu/g = Colony forming units per gram

g = g

µg/g = Microgram per gram

mg/kg = Milligram per kilogram = parts per million (ppm)

mg/1g = Milligram per 1g

% = Percentage of sample

% wt = µg/g divided by 10,000

Approved Signatory

Derrick Tanner  
General Manager



12423 NE Whitaker Way  
Portland, OR 97230  
503-254-1794



**Report Number:** 23-009822/D004.R000  
**Report Date:** 09/05/2023  
**ORELAP#:** OR100028  
**Purchase Order:** 2601189  
**Received:** 08/17/23 14:39

Revision: 4 Document ID: 7148  
Legacy ID: Worksheet Validated 04/20/2021

Laboratory Quality Control Results

JAOAC2015 V986 Batch ID: 2310184

Laboratory Control Sample									
Analyte	LCS	Result	Spike	Units	% Rec	Limits		Evaluation	Notes
CBDVA	2	0.0306	0.0309	%	98.9	80.0	- 120	Acceptable	
CBDV	2	0.0312	0.0313	%	99.8	80.0	- 120	Acceptable	
CBE	2	0.0324	0.0329	%	98.3	80.0	- 120	Acceptable	
CBDA	1	0.0326	0.0338	%	96.5	90.0	- 110	Acceptable	
CBGA	1	0.0334	0.0343	%	97.4	80.0	- 120	Acceptable	
CBG	1	0.0352	0.0363	%	97.0	80.0	- 120	Acceptable	
CBD	1	0.0339	0.0351	%	96.5	90.0	- 110	Acceptable	
THCV	2	0.0198	0.0200	%	99.1	80.0	- 120	Acceptable	
d8THCV	2	0.0272	0.0276	%	98.7	80.0	- 120	Acceptable	
THCVA	2	0.0303	0.0307	%	98.7	80.0	- 120	Acceptable	
CBN	1	0.0336	0.0343	%	97.8	80.0	- 120	Acceptable	
exo-THC	2	0.0297	0.0302	%	98.2	80.0	- 120	Acceptable	
d9THC	1	0.0352	0.0355	%	99.0	90.0	- 110	Acceptable	
d8THC	1	0.0354	0.0364	%	97.3	90.0	- 110	Acceptable	
9S-d10THC	1	0.0347	0.0354	%	97.8	80.0	- 120	Acceptable	
CBL	2	0.0312	0.0311	%	100	80.0	- 120	Acceptable	
9R-d10THC	1	0.0110	0.0115	%	95.4	80.0	- 120	Acceptable	
CBG	2	0.0328	0.0335	%	98.2	80.0	- 120	Acceptable	
THCA	1	0.0333	0.0344	%	96.9	90.0	- 110	Acceptable	
CBGA	2	0.0315	0.0319	%	98.7	80.0	- 120	Acceptable	
CBLA	2	0.0638	0.0647	%	98.7	80.0	- 120	Acceptable	
d9THCP	2	0.0311	0.0316	%	98.2	80.0	- 120	Acceptable	
CBT	2	0.0308	0.0308	%	100	80.0	- 120	Acceptable	

Method Blank							
Analyte	Result	LOQ	Units	Limits		Evaluation	Notes
CBDVA	<LOQ	0.00315	%	< 0.00315		Acceptable	
CBDV	<LOQ	0.00315	%	< 0.00315		Acceptable	
CBE	<LOQ	0.00315	%	< 0.00315		Acceptable	
CBDA	<LOQ	0.00315	%	< 0.00315		Acceptable	
CBGA	<LOQ	0.00315	%	< 0.00315		Acceptable	
CBG	<LOQ	0.00315	%	< 0.00315		Acceptable	
CBD	<LOQ	0.00315	%	< 0.00315		Acceptable	
THCV	<LOQ	0.00315	%	< 0.00315		Acceptable	
d8THCV	<LOQ	0.00315	%	< 0.00315		Acceptable	
THCVA	<LOQ	0.00315	%	< 0.00315		Acceptable	
CBN	<LOQ	0.00315	%	< 0.00315		Acceptable	
exo-THC	<LOQ	0.00315	%	< 0.00315		Acceptable	
d9THC	<LOQ	0.00315	%	< 0.00315		Acceptable	
d8THC	<LOQ	0.00315	%	< 0.00315		Acceptable	
9S-d10THC	<LOQ	0.00315	%	< 0.00315		Acceptable	
CBL	<LOQ	0.00315	%	< 0.00315		Acceptable	
9R-d10THC	<LOQ	0.00315	%	< 0.00315		Acceptable	
CBG	<LOQ	0.00315	%	< 0.00315		Acceptable	
THCA	<LOQ	0.00315	%	< 0.00315		Acceptable	
CBGA	<LOQ	0.00315	%	< 0.00315		Acceptable	
CBLA	<LOQ	0.00315	%	< 0.00315		Acceptable	
d9THCP	<LOQ	0.00315	%	< 0.00315		Acceptable	
CBT	<LOQ	0.00315	%	< 0.00315		Acceptable	

**Abbreviations**  
ND - None Detected at or above MRL  
RPD - Relative Percent Difference  
LOQ - Limit of Quantitation

**Units of Measure:**  
% - Percent





12423 NE Whitaker Way  
 Portland, OR 97230  
 503-254-1794



**Report Number:** 23-009822/D004.R000  
**Report Date:** 09/05/2023  
**ORELAP#:** OR100028  
**Purchase Order:** 2601189  
**Received:** 08/17/23 14:39

Revision: 4 Document ID: 7148  
 Legacy ID: Worksheet Validated 04/20/2021

Laboratory Quality Control Results

JAOAC2015 V986		Batch ID: 2310184						
Sample Duplicate		Sample ID: 23-0096390001						
Analyte	Result	Org. Result	LOQ	Units	RPD	Limits	Evaluation	Notes
CBDVA	<LOQ	<LOQ	0.00318	%	NA	< 20	Acceptable	
CBDV	<LOQ	<LOQ	0.00318	%	NA	< 20	Acceptable	
CBE	<LOQ	<LOQ	0.00318	%	NA	< 20	Acceptable	
CBD	0.286	0.268	0.00318	%	6.45	< 20	Acceptable	
CBGA	0.00683	0.00667	0.00318	%	2.46	< 20	Acceptable	
CBG	0.00337	0.00332	0.00318	%	1.58	< 20	Acceptable	
CBD	0.130	0.121	0.00318	%	7.39	< 20	Acceptable	
THCV	<LOQ	<LOQ	0.00318	%	NA	< 20	Acceptable	
d8THCV	<LOQ	<LOQ	0.00318	%	NA	< 20	Acceptable	
THCVA	<LOQ	<LOQ	0.00318	%	NA	< 20	Acceptable	
CBN	<LOQ	<LOQ	0.00318	%	NA	< 20	Acceptable	
exo-THC	<LOQ	<LOQ	0.00318	%	NA	< 20	Acceptable	
d9THC	0.00583	0.00563	0.00318	%	3.56	< 20	Acceptable	
d8THC	<LOQ	<LOQ	0.00318	%	NA	< 20	Acceptable	
9S-d10THC	<LOQ	<LOQ	0.00318	%	NA	< 20	Acceptable	
CBL	<LOQ	<LOQ	0.00318	%	NA	< 20	Acceptable	
9R-d10THC	<LOQ	<LOQ	0.00318	%	NA	< 20	Acceptable	
CBC	0.00613	0.00570	0.00318	%	7.28	< 20	Acceptable	
THCA	0.00482	0.00449	0.00318	%	6.89	< 20	Acceptable	
CBCA	0.0129	0.0121	0.00318	%	5.92	< 20	Acceptable	
CBLA	<LOQ	<LOQ	0.00318	%	NA	< 20	Acceptable	
d9THCP	<LOQ	<LOQ	0.00318	%	NA	< 20	Acceptable	
CBT	<LOQ	<LOQ	0.00318	%	NA	< 20	Acceptable	

**Abbreviations**

ND - None Detected at or above MRL  
 RPD - Relative Percent Difference  
 LOQ - Limit of Quantitation

**Units of Measure:**

% - Percent



12423 NE Whitaker Way  
Portland, OR 97230  
503-254-1794



**Report Number:** 23-009822/D004.R000  
**Report Date:** 09/05/2023  
**ORELAP#:** OR100028  
**Purchase Order:** 2601189  
**Received:** 08/17/23 14:39

Revision: 3 Document ID: 3120  
LegacyID: CFLC21WorksheetValidated 10/30/2020

Laboratory Pesticide Quality Control Results

AOAC2007.1 &EN 15662		Units: mg/Kg			Batch ID 2310519			
Method Blank	Blank Result	Blank Limits	Notes	LCS Result	LCS Spk	LCS % Re	Limits	Notes
Abamectin	0.00	< 0.250		0.927	1.000	92.7	50.0 150	
Acephate	0.00	< 0.200		0.658	0.800	82.3	60.0 120	
Acetamiprid	0.00	< 1.000		3.367	4.000	84.2	40.0 160	
Acetamiprid	0.00	< 0.100		0.436	0.400	108.9	60.0 120	
Aldicarb	0.00	< 0.200		0.780	0.800	97.5	60.0 120	
Azoxystrobin	0.00	< 0.100		0.360	0.400	90.0	60.0 120	
Bifenazate	0.00	< 0.100		0.434	0.400	108.4	60.0 120	
Bifenthrin	0.00	< 0.100		0.387	0.400	96.7	50.0 150	
Boscalid	0.00	< 0.200		0.986	0.800	123.3	60.0 120	Q1
Carbaryl	0.00	< 0.100		0.408	0.400	102.1	60.0 120	
Carbendazim	0.00	< 0.100		0.418	0.400	104.6	60.0 120	
Chlorantraniliprole	0.00	< 0.100		0.408	0.400	102.1	60.0 120	
Chlorfenapyr	0.187	< 0.500		2.188	2.000	109.4	60.0 120	
Chlorpyrifos	0.00	< 0.100		0.418	0.400	104.4	60.0 120	
Clofentezine	0.00	< 0.100		0.407	0.400	101.8	60.0 120	
Cyfluthrin	0.00	< 0.500		1.922	2.000	96.1	50.0 150	
Cypermethrin	0.006	< 0.500		2.057	2.000	102.9	50.0 150	
Daminozide	0.00	< 0.500		0.655	2.000	32.7	60.0 120	Q6
Diazinon	0.00	< 0.100		0.416	0.400	104.1	60.0 120	
Dichlorvos	0.00	< 0.500		2.129	2.000	106.4	60.0 120	
Dimethoate	0.00	< 0.100		0.396	0.400	99.0	60.0 120	
Ethiofencarb	0.00	< 0.100		0.387	0.400	96.8	60.0 120	
Ethofenprox	0.002	< 0.200		0.756	0.800	94.5	50.0 150	
Etoxazole	0.00	< 0.100		0.441	0.400	110.1	60.0 120	
Fenoxycarb	0.00	< 0.100		0.393	0.400	98.2	60.0 120	
Fenprophate	0.00	< 0.200		0.824	0.800	103.0	60.0 120	
Fipronil	0.00	< 0.200		0.771	0.800	96.4	60.0 120	
Fonicamid	0.00	< 0.250		0.940	1.000	94.0	60.0 120	
Fludioxonil	0.00	< 0.200		0.792	0.800	99.0	50.0 150	
Hexythiazox	0.00	< 0.250		1.028	1.000	102.8	60.0 120	
Imazalil	0.00	< 0.100		0.410	0.400	102.6	60.0 120	
Imidacloprid	0.00	< 0.200		0.796	0.800	99.5	60.0 120	
Kiesoxim-methyl	0.00	< 0.200		0.780	0.800	97.5	60.0 120	
Malathion	0.00	< 0.100		0.430	0.400	107.6	60.0 120	
Metolaxyl	0.00	< 0.100		0.427	0.400	106.7	60.0 120	
Methiocarb	0.00	< 0.100		0.401	0.400	100.2	60.0 120	
Methomyl	0.00	< 0.200		0.744	0.800	93.0	60.0 120	
MCK-264	0.00	< 0.100		0.371	0.400	92.8	50.0 150	
Mydobutanol	0.00	< 0.100		0.439	0.400	109.8	60.0 120	
Naled	0.00	< 0.250		0.899	1.000	89.9	50.0 150	
Oxamyl	0.00	< 0.500		1.912	2.000	95.6	60.0 120	
Padobutrazole	0.00	< 0.200		0.806	0.800	100.8	60.0 120	
Parathion-Methyl	0.00	< 0.100		0.409	0.400	102.3	50.0 150	
Permethrin	0.00	< 0.100		0.390	0.400	97.5	50.0 150	
Phosmet	0.00	< 0.100		0.390	0.400	97.5	50.0 150	
Piperonyl butoxide	0.00	< 0.500		2.047	2.000	102.4	60.0 120	
Prallethrin	0.00	< 0.100		0.372	0.400	93.0	60.0 120	
Propiconazole	0.00	< 0.200		0.798	0.800	99.7	60.0 120	
Propoxur	0.00	< 0.100		0.407	0.400	101.7	60.0 120	
Pyrethrin (Summe)	0.00	< 0.100		0.493	0.488	101.1	60.0 120	
Pyridaben	0.00	< 0.100		0.412	0.400	103.0	50.0 150	
Spinosad	0.00	< 0.100		0.350	0.388	90.3	50.0 150	
Spiromesfen	0.00	< 0.100		0.375	0.400	93.7	60.0 120	
Spirotetramat	0.00	< 0.100		0.410	0.400	102.5	60.0 120	
Spiroxamine	0.00	< 0.200		0.702	0.800	87.8	60.0 120	
Tebuconazole	0.00	< 0.200		0.703	0.800	87.8	60.0 120	
Thiadoprid	0.00	< 0.100		0.421	0.400	105.1	60.0 120	
Thiamethoxam	0.00	< 0.100		0.403	0.400	100.8	60.0 120	
Trifloxystrobin	0.00	< 0.100		0.401	0.400	100.2	60.0 120	



12423 NE Whitaker Way  
Portland, OR 97230  
503-254-1794



Report Number: 23-009822/D004.R000  
Report Date: 09/05/2023  
ORELAP#: OR100028  
Purchase Order: 2601189  
Received: 08/17/23 14:39

Revision: 3 Document ID: 3120  
LegacyID: CFLC21WorksheetValidated 10/30/2020

Laboratory Pesticide Quality Control Results

AOAC2007.1 & EN 15662		Units: mg/Kg				Batch ID 2310519				
Matrix Spke/Matrix Spke Duplicate Recoveries	Result	MS Res	MSD Res	Spike	RFD%	Limit	MS % Re	MSD % Re	Limits	Notes
Abamectin	0.00	0.655	0.708	1.00	7.8%	< 30	65.9%	70.8%	50 - 150	
Acaphate	0.00	0.645	0.660	0.80	2.4%	< 30	79.8%	81.7%	50 - 150	
Acetaminophen	0.00	2.299	0.341	4.00	148.3%	< 30	57.9%	8.5%	50 - 150	R, Q
Acetamiprid	0.00	0.466	0.455	0.40	2.2%	< 30	116.4%	113.8%	50 - 150	
Aldicarb	0.00	0.733	0.705	0.80	3.8%	< 30	91.7%	88.3%	50 - 150	
Azoxystrobin	0.00	0.245	0.247	0.40	0.9%	< 30	59.1%	59.0%	50 - 150	
Bifenazate	0.00	0.317	0.325	0.40	2.5%	< 30	79.2%	81.2%	50 - 150	
Bifenthrin	0.00	0.166	0.161	0.40	2.7%	< 30	41.5%	40.4%	50 - 150	Q
Boscalid	0.00	0.564	0.565	0.80	3.5%	< 30	70.6%	73.1%	50 - 150	
Carbaryl	0.00	0.286	0.284	0.40	0.7%	< 30	71.6%	71.1%	50 - 150	
Carbofuran	0.00	0.272	0.280	0.40	3.1%	< 30	67.9%	70.1%	50 - 150	
Chlorantraniliprole	0.00	0.332	0.322	0.40	3.0%	< 30	82.9%	80.4%	50 - 150	
Chlorfenapyr	0.22	1.297	1.414	2.00	10.3%	< 30	53.8%	59.6%	50 - 150	
Chlorpyrifos	0.00	0.293	0.274	0.40	6.6%	< 30	73.2%	68.6%	50 - 150	
Clofentezine	0.00	0.297	0.270	0.40	9.6%	< 30	74.4%	67.8%	50 - 150	
Cyfluthrin	0.00	1.125	0.880	2.00	24.4%	< 30	56.3%	44.0%	30 - 150	
Cypermethrin	0.00	0.867	0.881	2.00	1.7%	< 30	42.9%	43.6%	50 - 150	Q
Daminozide	0.00	0.650	0.636	2.00	2.1%	< 30	32.9%	31.8%	30 - 150	
Diazinon	0.00	0.263	0.302	0.40	13.8%	< 30	65.8%	75.5%	50 - 150	
Dichlorvos	0.00	1.631	1.849	2.00	12.9%	< 30	81.6%	92.5%	50 - 150	
Dimethoate	0.00	0.378	0.364	0.40	4.0%	< 30	94.6%	90.9%	50 - 150	
Ethioniazole	0.00	0.285	0.324	0.40	12.5%	< 30	71.4%	80.9%	50 - 150	
Etofenprox	0.00	0.297	0.287	0.80	3.5%	< 30	37.2%	35.9%	50 - 150	Q
Etoxazole	0.00	0.265	0.288	0.40	8.4%	< 30	65.6%	71.4%	50 - 150	
Fenoxycarb	0.00	0.284	0.309	0.40	8.4%	< 30	71.1%	77.4%	50 - 150	
Fenpyroximate	0.013	0.454	0.448	0.80	1.2%	< 30	55.1%	54.5%	50 - 150	
Fipronil	0.025	0.431	0.513	0.80	18.4%	< 30	50.6%	60.9%	50 - 150	
Fonicamid	0.00	0.990	0.950	1.00	4.2%	< 30	99.0%	95.0%	50 - 150	
Fludioxonil	0.00	1.113	1.187	0.80	6.5%	< 30	139.1%	148.4%	50 - 150	
Hexythiazox	0.00	0.323	0.305	1.00	5.6%	< 30	32.3%	30.5%	50 - 150	Q
Imazalil	0.00	0.307	0.295	0.40	4.0%	< 30	76.7%	73.7%	50 - 150	
Imidacloprid	0.00	0.851	0.797	0.80	6.5%	< 30	106.3%	99.6%	50 - 150	
Kiesoxim-methyl	0.00	0.553	0.482	0.80	13.7%	< 30	69.1%	60.2%	50 - 150	
Malathion	0.00	0.231	0.214	0.40	7.4%	< 30	57.7%	53.6%	50 - 150	
Metaxyl	0.00	0.321	0.364	0.40	12.4%	< 30	80.3%	90.9%	50 - 150	
Methiocarb	0.00	0.236	0.305	0.40	2.8%	< 30	74.1%	76.2%	50 - 150	
Methomyl	0.00	0.708	0.764	0.80	7.6%	< 30	88.5%	95.6%	50 - 150	
MCK-264	0.00	0.255	0.302	0.40	16.9%	< 30	63.8%	75.6%	50 - 150	
Mydobutani	0.00	0.365	0.367	0.40	0.4%	< 30	91.2%	91.6%	50 - 150	
Naled	0.00	0.611	0.619	1.00	1.4%	< 30	61.1%	61.9%	50 - 150	
Oxaryl	0.00	1.848	1.941	2.00	4.9%	< 30	92.4%	97.1%	50 - 150	
Padobutrazole	0.00	0.740	0.777	0.80	4.9%	< 30	92.5%	97.1%	50 - 150	
Parathion-Methyl	0.00	0.366	0.317	0.40	14.4%	< 30	91.6%	79.3%	30 - 150	
Permethrin	0.00	0.224	0.221	0.40	1.6%	< 30	56.0%	55.2%	50 - 150	
Phosmet	0.00	0.361	0.333	0.40	8.2%	< 30	90.4%	83.2%	50 - 150	
Piperonyl butoxide	0.00	1.454	1.483	2.00	1.9%	< 30	72.7%	74.1%	50 - 150	
Prallethrin	0.00	0.147	0.172	0.40	15.2%	< 30	36.9%	42.9%	50 - 150	Q
Propiconazole	0.00	0.628	0.660	0.80	5.1%	< 30	78.5%	82.6%	50 - 150	
Propoxur	0.00	0.336	0.332	0.40	1.2%	< 30	84.1%	83.0%	50 - 150	
Pyrethrin (Summe)	0.00	0.339	0.356	0.488	5.1%	< 30	68.5%	72.1%	50 - 150	
Pyridaben	0.00	0.122	0.127	0.40	3.4%	< 30	30.6%	31.7%	50 - 150	Q
Spirosad	0.00	0.215	0.201	0.388	6.9%	< 30	55.5%	51.8%	50 - 150	
Spiromesfen	0.037	0.244	0.246	0.40	1.0%	< 30	51.8%	52.3%	50 - 150	
Spirotetramat	0.00	0.455	0.480	0.40	5.2%	< 30	113.8%	119.9%	50 - 150	
Spiroxamine	0.00	0.675	0.657	0.80	2.7%	< 30	84.3%	82.1%	50 - 150	
Tebuconazole	0.00	0.671	0.669	0.80	0.3%	< 30	83.9%	83.6%	50 - 150	
Thiadoprid	0.00	0.410	0.383	0.40	6.9%	< 30	102.5%	95.7%	50 - 150	
Thiamethoxam	0.00	0.387	0.421	0.40	8.5%	< 30	96.7%	105.3%	50 - 150	
Trifloxystrobin	0.00	0.216	0.202	0.40	6.9%	< 30	54.1%	50.5%	50 - 150	



12423 NE Whitaker Way  
 Portland, OR 97230  
 503-254-1794



**Report Number:** 23-009822/D004.R000  
**Report Date:** 09/05/2023  
**ORELAP#:** OR100028  
**Purchase Order:** 2601189  
**Received:** 08/17/23 14:39

Revision: 1 Document ID: 7086  
 Legacy ID: CFL-E57Worksheet Validated 11/04/2020

Terpenes Quality Control Results

Method Reference: EPA5035				Batch ID: 2310570					
Method Blank				Laboratory Control Sample					
Analyte	Result	LOQ	Notes	Result	LCS	Units	LCS% Rec	Limits	Notes
a-pinene	<LOQ	< 200		490	500	µg/g	98%	70 - 130	
Camphene	<LOQ	< 200		535	500	µg/g	87%	70 - 130	
Sabinene	<LOQ	< 200		491	500	µg/g	98%	70 - 130	
b-Pinene	<LOQ	< 200		495	500	µg/g	97%	70 - 130	
b-Myrcene	<LOQ	< 200		557	500	µg/g	89%	70 - 130	
a-phellandrene	<LOQ	< 200		559	500	µg/g	89%	70 - 130	
d-3-Carene	<LOQ	< 200		553	500	µg/g	90%	70 - 130	
a-Terpinene	<LOQ	< 200		520	500	µg/g	103%	70 - 130	
p-Cymene	<LOQ	< 200		549	500	µg/g	87%	70 - 130	
D-Limonene	<LOQ	< 200		510	500	µg/g	104%	70 - 130	
Eucalyptol	<LOQ	< 200		564	500	µg/g	91%	70 - 130	
b-cis-Cimene	<LOQ	< 67		186	167	µg/g	88%	70 - 130	
b-trans-Cimene	<LOQ	< 133		378	333	µg/g	92%	70 - 130	
g-Terpinene	<LOQ	< 200		507	500	µg/g	102%	70 - 130	
Sabinene Hydrate	<LOQ	< 200		501	500	µg/g	100%	70 - 130	
Terpinolene	<LOQ	< 200		538	500	µg/g	105%	70 - 130	
D-Fenchone	<LOQ	< 200		498	500	µg/g	100%	70 - 130	
Linalool	<LOQ	< 200		593	500	µg/g	93%	70 - 130	
Fenchol	<LOQ	< 200		501	500	µg/g	99%	70 - 130	
Camphor	<LOQ	< 200		562	500	µg/g	91%	70 - 130	
Isopulego	<LOQ	< 200		604	500	µg/g	91%	70 - 130	
Isoborneol	<LOQ	< 200		590	500	µg/g	90%	70 - 130	
Borneol	<LOQ	< 200		508	500	µg/g	105%	70 - 130	
DL-Menthhol	<LOQ	< 200		650	500	µg/g	87%	70 - 130	
Terpineol	<LOQ	< 200		505	500	µg/g	100%	70 - 130	
Nerd	<LOQ	< 200		577	500	µg/g	87%	70 - 130	
Pulegone	<LOQ	< 200		529	500	µg/g	101%	70 - 130	
Geraniol	<LOQ	< 200		529	500	µg/g	108%	70 - 130	
Geranyl Acetate	<LOQ	< 200		578	500	µg/g	89%	70 - 130	
a-Cedrene	<LOQ	< 200		491	500	µg/g	104%	70 - 130	
b-Caryophyllene	<LOQ	< 200		574	500	µg/g	91%	70 - 130	
a-Humulene	<LOQ	< 200		497	500	µg/g	100%	70 - 130	
Valene	<LOQ	< 200		552	500	µg/g	92%	70 - 130	
cis-Nerolidol	<LOQ	< 200		600	500	µg/g	94%	70 - 130	
a-Farnesene	<LOQ	< 200		617	500	µg/g	84%	70 - 130	
trans-Nerolidol	<LOQ	< 200		521	500	µg/g	107%	70 - 130	
Caryophyllene Oxide	<LOQ	< 200		582	500	µg/g	92%	70 - 130	
Guaiol	<LOQ	< 200		498	500	µg/g	104%	70 - 130	
Cedrol	<LOQ	< 200		604	500	µg/g	93%	70 - 130	
a-Bisabolol	<LOQ	< 200		596	500	µg/g	89%	70 - 130	

Definitions

LOQ	Limit of Quantitation
LCS	Laboratory Control Sample
% REC	Percent Recovery



12423 NE Whitaker Way  
 Portland, OR 97230  
 503-254-1794



**Report Number:** 23-009822/D004.R000  
**Report Date:** 09/05/2023  
**ORELAP#:** OR100028  
**Purchase Order:** 2601189  
**Received:** 08/17/23 14:39

Revision: 1 Document ID: 7086  
 Legacy ID: CFL-E57Worksheet Validated 11/04/2020

Terpenes Quality Control Results

Method Reference: EPA5035		Batch ID: 2310570					
Sample/ Sample Duplicate		Sample ID: 23-009822-001					
Analyte	Result	Org. Result	LOQ	Units	% RPD	LIMIT	Notes
a-pinene	<LOQ	<LOQ	190	µg/g	0%	< 20	
Camphene	<LOQ	<LOQ	190	µg/g	0%	< 20	
Sabinene	<LOQ	<LOQ	190	µg/g	0%	< 20	
b-Pinene	<LOQ	<LOQ	190	µg/g	0%	< 20	
b-Myrcene	438	435	190	µg/g	1%	< 20	
a-phellandrene	<LOQ	<LOQ	190	µg/g	0%	< 20	
d-3-Carene	<LOQ	<LOQ	190	µg/g	0%	< 20	
a-Terpinene	<LOQ	<LOQ	190	µg/g	0%	< 20	
p-Cymene	<LOQ	<LOQ	190	µg/g	0%	< 20	
D-Limonene	780	776	190	µg/g	1%	< 20	
Eucalyptol	<LOQ	<LOQ	190	µg/g	0%	< 20	
b-cis-Cimene	<LOQ	<LOQ	63.4	µg/g	0%	< 20	
b-trans-Cimene	<LOQ	<LOQ	127	µg/g	0%	< 20	
g-Terpinene	<LOQ	<LOQ	190	µg/g	0%	< 20	
Sabinene Hydrate	<LOQ	<LOQ	190	µg/g	0%	< 20	
Terpinolene	<LOQ	<LOQ	190	µg/g	0%	< 20	
D-Fenchone	<LOQ	<LOQ	190	µg/g	0%	< 20	
Linalool	<LOQ	<LOQ	190	µg/g	0%	< 20	
Fenchol	<LOQ	<LOQ	190	µg/g	0%	< 20	
Camphor	<LOQ	<LOQ	190	µg/g	0%	< 20	
Isopulego	<LOQ	<LOQ	190	µg/g	0%	< 20	
Isoborneol	<LOQ	<LOQ	190	µg/g	0%	< 20	
Borneol	<LOQ	<LOQ	190	µg/g	0%	< 20	
DL-Menthhol	<LOQ	<LOQ	190	µg/g	0%	< 20	
Terpineol	<LOQ	<LOQ	190	µg/g	0%	< 20	
Nerd	<LOQ	<LOQ	190	µg/g	0%	< 20	
Pulegone	<LOQ	<LOQ	190	µg/g	0%	< 20	
Geraniol	<LOQ	<LOQ	190	µg/g	0%	< 20	
Geranyl_Acetate	<LOQ	<LOQ	190	µg/g	0%	< 20	
a-Cedrene	<LOQ	<LOQ	190	µg/g	0%	< 20	
b-Caryophyllene	1080	1070	190	µg/g	1%	< 20	
a-Humulene	405	405	190	µg/g	0%	< 20	
Valnene	<LOQ	<LOQ	190	µg/g	0%	< 20	
cis-Nerolidol	<LOQ	<LOQ	190	µg/g	0%	< 20	
a-Farnesene	1000	992	190	µg/g	1%	< 20	
trans-Nerolidol	<LOQ	<LOQ	190	µg/g	0%	< 20	
Caryophyllene_Oxide	713	706	190	µg/g	1%	< 20	
Guaiol	427	422	190	µg/g	1%	< 20	
Cedrol	<LOQ	<LOQ	190	µg/g	0%	< 20	
a-Bisabolol	439	447	190	µg/g	2%	< 20	

Definitions

RPD Relative Percent Difference



12423 NE Whitaker Way  
Portland, OR 97230  
503-254-1794



**Report Number:** 23-009822/D004.R000  
**Report Date:** 09/05/2023  
**ORELAP#:** OR100028  
**Purchase Order:** 2601189  
**Received:** 08/17/23 14:39





Explanation of QC Flag Comments:

Code	Explanation
Q	Matrix interferences affecting spike or surrogate recoveries.
Q1	Quality control result biased high. Only non-detect samples reported.
Q2	Quality control outside QC limits. Data considered estimate.
Q3	Sample concentration greater than four times the amount spiked.
Q4	Non-homogenous sample matrix, affecting RPD result and/or % recoveries.
Q5	Spike results above calibration curve.
Q6	Quality control outside QC limits. Data acceptable based on remaining QC.
R	Relative percent difference (RPD) outside control limit.
R1	RPD non-calculable, as sample or duplicate results are less than five times the LOQ.
R2	Sample replicates RPD non-calculable, as only one replicate is within the analytical range.
LOQ1	Quantitation level raised due to low sample volume and/or dilution.
LOQ2	Quantitation level raised due to matrix interference.
B	Analyte detected in method blank, but not in associated samples.
B1	The sample concentration is greater than 5 times the blank concentration.
B2	The sample concentration is less than 5 times the blank concentration.