

KB Kitchen Bath & Floors

We Make dreams come True

772 207 0821

772 207 0627

2790 SE Federal Hwy. Stuart Fl 34997

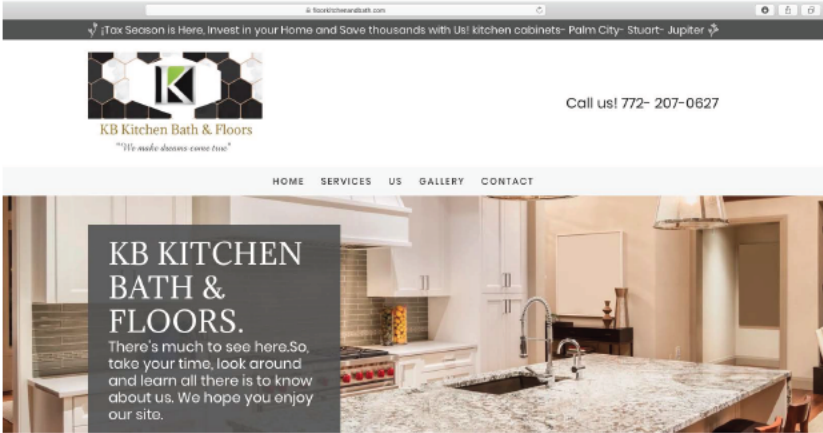


FRAMED CABINET LINE PRICE LIST.

ORDERING INFORMATION

Register to “Become A Dealer”

Visit our website at www.floorKitchenAndBath.com Click on the “CONTACT” link and fill out the form with your business information. Once your application is received it will be reviewed and processed within 48 hours. During the review process your sales rep will be assigned, your pricing will be established and your account will be activated.



Price list doesn't included assembling or installation.
Add **\$100,00** per cabinet if you want KB Kitchen Bath to assemble and install your kitchen cabinets.



Framed Cabinet Price List



DOOR STYLE

White Shaker

Premier Shaker
Java Shaker

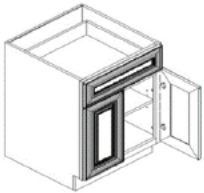
ITEM

DESCRIPTION

BASE CABINETS



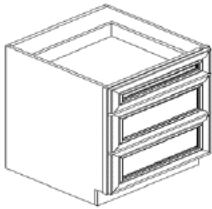
| | | | |
|------|----------------------------|-----|-----|
| B-09 | BASE 09" 1 DOOR & 1 DRAWER | 160 | 176 |
| B-12 | BASE 12" 1 DOOR & 1 DRAWER | 172 | 189 |
| B-15 | BASE 15" 1 DOOR & 1 DRAWER | 188 | 207 |
| B-18 | BASE 18" 1 DOOR & 1 DRAWER | 202 | 222 |
| B-21 | BASE 21" 1 DOOR & 1 DRAWER | 216 | 238 |



| | | | |
|------|-----------------------------|-----|-----|
| B-24 | BASE 24" 2 DOORS & 1 DRAWER | 278 | 306 |
| B-27 | BASE 27" 2 DOORS & 1 DRAWER | 294 | 323 |
| B-30 | BASE 30" 2 DOORS & 2 DRAWER | 342 | 376 |
| B-33 | BASE 33" 2 DOORS & 2 DRAWER | 354 | 389 |
| B-36 | BASE 36" 2 DOORS & 2 DRAWER | 372 | 409 |
| B-42 | BASE 42" 2 DOORS & 2 DRAWER | 412 | 453 |

FULL HEIGHT DOOR AVAILABLE FOR WENGE ONLY

3 DRAWER BASE CABINETS 1 REG & 2 DEEP DRAWERS



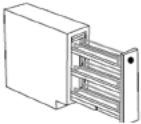
| | | | |
|-----------|----------------------------|-----|-----|
| DB-12 - 3 | 12" DRAWER PACK - 3 DRAWER | 275 | 313 |
| DB-15 - 3 | 15" DRAWER PACK - 3 DRAWER | 290 | 334 |
| DB-18 - 3 | 18" DRAWER PACK - 3 DRAWER | 316 | 363 |
| DB-21 - 3 | 21" DRAWER PACK - 3 DRAWER | 342 | 393 |
| DB-24 - 3 | 24" DRAWER PACK - 3 DRAWER | 368 | 423 |
| DB-27 - 3 | 27" DRAWER PACK - 3 DRAWER | 394 | 453 |
| DB-30 - 3 | 30" DRAWER PACK - 3 DRAWER | 418 | 481 |
| DB-33 - 3 | 33" DRAWER PACK - 3 DRAWER | 445 | 520 |
| DB-36 - 3 | 36" DRAWER PACK - 3 DRAWER | 485 | 535 |

WASTE BASE CABINET



| | | | |
|----------|-----------------------------|-----|-----|
| BWBT18-2 | BASE WASTE BASKET 18 DOUBLE | 364 | 400 |
|----------|-----------------------------|-----|-----|

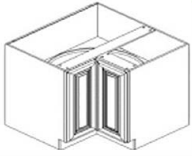
PULL OUT SPICE CABINET



| | | | |
|-------|-----------------------------|-----|-----|
| BSR06 | 6" BASE PULL OUT SPICE RACK | 200 | 200 |
| BSR09 | 9" BASE PULL OUT SPICE RACK | 234 | 257 |

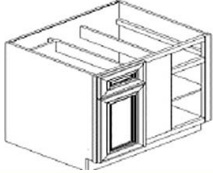
| DOOR STYLE | White Shaker | Premier Shaker Java Shaker |
|-------------------|---------------------|---------------------------------------|
|-------------------|---------------------|---------------------------------------|

LAZY SUSAN CABINET



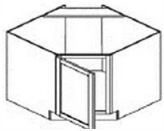
| | | | |
|--------|-------------------------|-----|-----|
| BLS-33 | 33" CORNER BASE CABINET | 500 | 550 |
| BLS-36 | 36" CORNER BASE CABINET | 530 | 583 |

BASE BLIND CORNERS



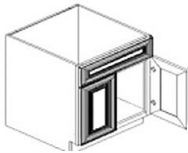
| | | | |
|--------|--|-----|-----|
| BBC-36 | 36" BLIND CORNER BASE LEFT OR RIGHT OPENNING <i>Door Size 14.5" REQUIRES 42" SPACE</i> | 330 | 363 |
| BBC-42 | 42" BLIND CORNER BASE LEFT OR RIGHT OPENNING <i>Door Size 19" REQUIRES 45" TO 48" SPACE</i> | 350 | 382 |

CORNER SINK & SINK BASE CABINETS



| | | | |
|--------|-------------------------------|-----|-----|
| DCSB36 | DIAGONAL CORNER SINK 36"X36" | 400 | N/A |
| DCSB42 | DIAGONAL CORNER SINK 42"X 42" | 450 | N/A |

SINK BASE CABINETS



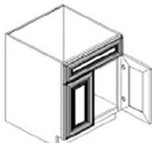
| | | | |
|-------|-------------------------|-----|-----|
| SB-30 | 30" SINK BASE - 2 DOORS | 268 | 292 |
| SB-33 | 33" SINK BASE - 2 DOORS | 282 | 310 |
| SB-36 | 36" SINK BASE - 2 DOORS | 298 | 328 |

VANITY DRAWER BASE (ALL VANITY CABINETS ARE 34.5" HIGH)



| | | | |
|--------|---|-----|-----|
| VD12-3 | VANITY BASE WITH 3 DRAWERS 12"W x 21"D x 34.5"H | 335 | 350 |
| VD15-3 | VANITY BASE WITH 3 DRAWERS 15"W x 21"D x 34.5"H | 360 | 370 |
| VD18-3 | VANITY BASE WITH 3 DRAWERS 18"W x 21"D x 34.5"H | 385 | 432 |
| VD21-3 | VANITY BASE WITH 3 DRAWERS 21"W x 21"D x 34.5"H | 390 | 470 |

VANITY SINK BASE



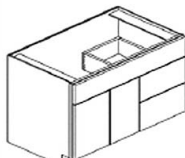
| | | | |
|-------|---------------------------------------|-----|-----|
| VSB24 | VANITY SINK BASE 24"W x 21"D x 34.5"H | 301 | 324 |
| VSB30 | VANITY SINK BASE 30"W x 21"D x 34.5"H | 336 | 360 |
| VSB36 | VANITY SINK BASE 36"W x 21"D x 34.5"H | 363 | 393 |

VANITY KNEE DRAWER



| | | | |
|-------|---|-----|-----|
| VKD30 | VANITY KNEE DRAWER 30"W x 21"D x 7 7/8" H | 258 | 258 |
|-------|---|-----|-----|

VANITY SINK BASE COMBO 36" & 42"

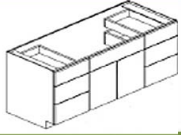


| | | | |
|------------|---|-----|-----|
| VSD3621-2R | VANITY SINK 2 DRAWERS ON RIGHT 36W 34 1/2"H 21D | 520 | N/A |
| VSD3621-2L | VANITY SINK 2 DRAWERS ON LEFT 36W 34 1/2"H 21D | 520 | N/A |
| VSD4221-2R | VANITY SINK 2 DRAWERS ON RIGHT 42W 34 1/2"H 21D | 569 | N/A |
| VSD4221-2L | VANITY SINK 2 DRAWERS ON LEFT 42 W 34 1/2"H 21D | 569 | N/A |

VSD 42 = 27" DOORS (2) AND 15" DRAWERS

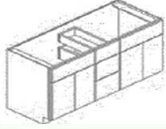
| DOOR STYLE | White Shaker | Premier Shaker Java Shaker |
|-------------------|---------------------|---------------------------------------|
|-------------------|---------------------|---------------------------------------|

VANITY SINK BASE COMBO 48" & 60"
SINGLE SINK AND 6 DRAWERS



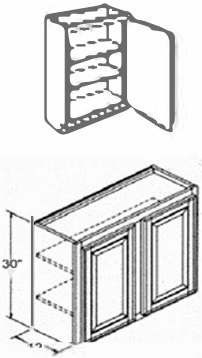
| | | | |
|-----------|---|-----|-----|
| VDD4821-6 | VANITY SINK WITH 6 DRAWERS 48W 34 1/2"H 21D | 762 | N/A |
| VDD6021-6 | VANITY SINK WITH 6 DRAWERS 60W 34 1/2"H 21D | 796 | N/A |

DOUBLE SINK AND 3 DRAWERS



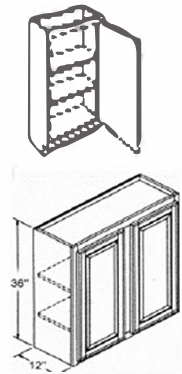
| | | | |
|-----------|--|-----|-----|
| VCD6021-3 | VANITY DOUBLE SINK 3 DRAWERS 60"W 34 1/2"H 21D | 686 | N/A |
|-----------|--|-----|-----|

30" HIGH WALL CABINETS



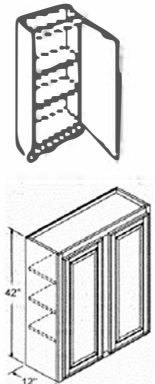
| | | | |
|--------|------------------|-----|-----|
| W-0930 | 1 DOOR 2 SHELVES | 108 | 119 |
| W-1230 | 1 DOOR 2 SHELVES | 120 | 132 |
| W-1530 | 1 DOOR 2 SHELVES | 136 | 150 |
| W-1830 | 1 DOOR 2 SHELVES | 150 | 165 |
| W-2130 | 1 DOOR 2 SHELVES | 164 | 180 |
| W-2430 | 2 DOOR 2 SHELVES | 192 | 211 |
| W-2730 | 2 DOOR 2 SHELVES | 210 | 231 |
| W-3030 | 2 DOOR 2 SHELVES | 224 | 246 |
| W-3330 | 2 DOOR 2 SHELVES | 238 | 262 |
| W-3630 | 2 DOOR 2 SHELVES | 254 | 279 |

36" HIGH WALL CABINETS



| | | | |
|--------|------------------|-----|-----|
| W-0936 | 1 DOOR 2 SHELVES | 120 | 132 |
| W-1236 | 1 DOOR 2 SHELVES | 138 | 152 |
| W-1536 | 1 DOOR 2 SHELVES | 156 | 172 |
| W-1836 | 1 DOOR 2 SHELVES | 176 | 194 |
| W-2136 | 1 DOOR 2 SHELVES | 192 | 211 |
| W-2436 | 2 DOOR 2 SHELVES | 220 | 242 |
| W-2736 | 2 DOOR 2 SHELVES | 240 | 264 |
| W-3036 | 2 DOOR 2 SHELVES | 266 | 293 |
| W-3336 | 2 DOOR 2 SHELVES | 278 | 306 |
| W-3636 | 2 DOOR 2 SHELVES | 292 | 321 |

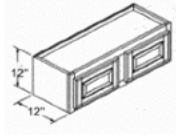
42" HIGH WALL CABINETS



| | | | |
|--------|------------------|-----|-----|
| W-0942 | 1 DOOR 3 SHELVES | 136 | 150 |
| W-1242 | 1 DOOR 3 SHELVES | 158 | 174 |
| W-1542 | 1 DOOR 3 SHELVES | 178 | 196 |
| W-1842 | 1 DOOR 3 SHELVES | 204 | 224 |
| W-2142 | 1 DOOR 3 SHELVES | 216 | 238 |
| W-2442 | 2 DOOR 3 SHELVES | 248 | 274 |
| W-2742 | 2 DOOR 3 SHELVES | 276 | 304 |
| W-3042 | 2 DOOR 3 SHELVES | 302 | 332 |
| W-3342 | 2 DOOR 3 SHELVES | 316 | 348 |
| W-3642 | 2 DOOR 3 SHELVES | 324 | 356 |

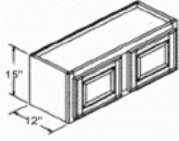
| DOOR STYLE | White Shaker | Premier Shaker Java Shaker |
|-------------------|---------------------|---------------------------------------|
|-------------------|---------------------|---------------------------------------|

12" HIGH WALL CABINETS 2 DOOR NO SHELVES



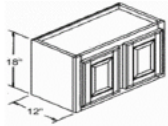
| | | | |
|--------|----------------------------|-----|-----|
| W-3012 | WALL 30"W x 12"H - 2 DOORS | 114 | 132 |
| W-3312 | WALL 33"W x 12"H - 2 DOORS | 125 | 138 |
| W-3612 | WALL 36"W x 12"H - 2 DOORS | 132 | 145 |

15" HIGH WALL CABINETS 2 DOOR NO SHELVES



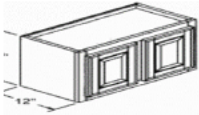
| | | | |
|--------|----------------------------|-----|-----|
| W-3015 | WALL 30"W x 15"H - 2 DOORS | 132 | 150 |
| W-3315 | WALL 33"W x 15"H - 2 DOORS | 142 | 158 |
| W-3615 | WALL 36"W x 15"H - 2 DOORS | 152 | 167 |

18" HIGH WALL CABINETS 2 DOOR NO SHELVES



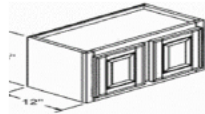
| | | | |
|--------|----------------------------|-----|-----|
| W-3018 | WALL 30"W x 18"H - 2 DOORS | 148 | 165 |
| W-3318 | WALL 33"W x 18"H - 2 DOORS | 160 | 176 |
| W-3618 | WALL 36"W x 18"H - 2 DOORS | 170 | 187 |

21" HIGH WALL CABINETS 2 DOOR NO SHELVES



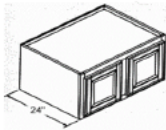
| | | | |
|--------|----------------------------|-----|-----|
| W-3021 | WALL 30"W x 21"H - 2 DOORS | 170 | 187 |
| W-3621 | WALL 36"W x 21"H - 2 DOORS | 190 | 211 |

24" HIGH WALL CABINETS 2 DOOR 1 SHELF



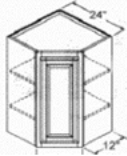
| | | | |
|--------|--------------------------------------|-----|-----|
| W-3024 | WALL 30"W x 24"H - 2 DOORS 1 SHELF | 192 | 211 |
| W-3324 | WALL 33"W x 24"H - 2 DOORS 1 SHELF | 202 | 223 |
| W-3624 | WALL 36"W x 24"H - 2 DOORS 1 SHELF | 214 | 236 |
| W-3027 | WALL 30"W x 27"H - 2 DOORS 2 SHELVES | 207 | 228 |

24" DEEP REFRIGERATOR WALL



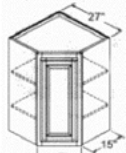
| | | | |
|----------|---|-----|-----|
| W-361224 | WALL 36"W x 12"H x 24"D - 2 DOORS | 182 | 200 |
| W-361524 | WALL 36"W x 15"H x 24"D - 2 DOORS | 198 | 218 |
| W-361824 | WALL 36"W x 18"H x 24"D - 2 DOORS | 218 | 240 |
| W-362424 | WALL 36"W x 24"H x 24"D - 2 DOORS 1 SHELF | 294 | 323 |

WALL DIAGONAL CORNER CABINETS 12" DEEP



| | | | |
|----------|------------------------------------|-----|-----|
| WDC-2430 | WALL DIAGONAL CORNER - 24"W x 30"H | 246 | 271 |
| WDC-2436 | WALL DIAGONAL CORNER - 24"W x 36"H | 276 | 304 |
| WDC-2442 | WALL DIAGONAL CORNER - 24"W x 42"H | 310 | 342 |

WALL DIAGONAL CORNER CABINETS 15" DEEP



| | | | |
|------------|---|-----|-----|
| WDC-273615 | WALL DIAGONAL CORNER - 27"W x 36"H 15" DEEP | 313 | N/A |
| WDC-274215 | WALL DIAGONAL CORNER - 27"W x 42"H 15" DEEP | 345 | N/A |

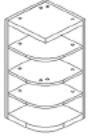
| DOOR STYLE | White Shaker | Premier Shaker Java Shaker |
|-------------------|---------------------|---------------------------------------|
|-------------------|---------------------|---------------------------------------|

WALL BLIND CORNER LEFT OR RIGHT



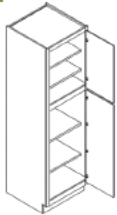
| | | | |
|----------|--------------------------------------|-----|-----|
| WBC-2730 | WALL BLIND CORNER 27" x 30" 12" DEEP | 242 | 266 |
| WBC-2736 | WALL BLIND CORNER 27" x 36" 12" DEEP | 260 | 286 |
| WBC-2742 | WALL BLIND CORNER 27" x 42" 12" DEEP | 292 | 321 |

OPEN WALL END SHELF CABINETS LEFT OR RIGHT

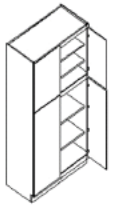


| | | | |
|----------|-------------------------------|-----|-----|
| WES-1230 | WALL END SHELF 12"W - 3 SHELF | 108 | N/A |
| WES-1236 | WALL END SHELF 12"W - 3 SHELF | 118 | N/A |
| WES-1242 | WALL END SHELF 12"W - 3 SHELF | 138 | N/A |

PANTRIES CABINETS

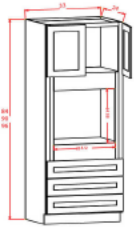


| | | | |
|---------|----------------------------|-----|-----|
| PC-1884 | PANTRY 18"W x 84"H 2 DOORS | 500 | 550 |
| PC-1890 | PANTRY 18"W x 90"H 2 DOORS | 528 | 581 |
| PC-1896 | PANTRY 18"W x 96"H 2 DOORS | 558 | 614 |



| | | | |
|---------|----------------------------|-----|-----|
| PC-2484 | PANTRY 24"W x 84"H 4 DOORS | 630 | 693 |
| PC-2490 | PANTRY 24"W x 90"H 4 DOORS | 664 | 730 |
| PC-2496 | PANTRY 24"W x 96"H 4 DOORS | 700 | 770 |
| PC-3084 | PANTRY 30"W x 84"H 4 DOORS | 732 | 805 |
| PC-3090 | PANTRY 30"W x 90"H 4 DOORS | 770 | 847 |
| PC-3096 | PANTRY 30"W x 96"H 4 DOORS | 812 | 894 |

OVEN CABINETS

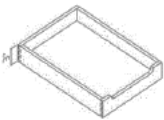


33" SINGLE OVEN CABINETS

USE FOR 30" APPLIANCES

| | | | |
|---------|-------------------------------|-----|------|
| SOC3384 | SINGLE OVEN CABINET 33W x 84H | 894 | 978 |
| SOC3390 | SINGLE OVEN CABINET 33W x 90H | 930 | 1023 |
| SOC3396 | SINGLE OVEN CABINET 33W x 96H | 990 | 1089 |

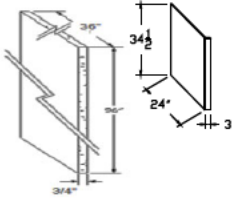
ROLL OUT TRAY



| | | | |
|-------|-------------------|----|----|
| ROT15 | ROLL OUT TRAY 15" | 50 | 50 |
| ROT18 | ROLL OUT TRAY 18" | 54 | 54 |
| ROT21 | ROLL OUT TRAY 21" | 58 | 58 |
| ROT24 | ROLL OUT TRAY 24" | 62 | 62 |
| ROT27 | ROLL OUT TRAY 27" | 66 | 66 |
| ROT30 | ROLL OUT TRAY 30" | 70 | 70 |
| ROT33 | ROLL OUT TRAY 33" | 74 | 74 |
| ROT36 | ROLL OUT TRAY 36" | 78 | 78 |

| DOOR STYLE | White Shaker | Premier Shaker Java Shaker |
|-------------------|---------------------|---------------------------------------|
|-------------------|---------------------|---------------------------------------|

SIDE PANELS



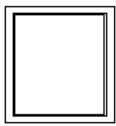
| | | | |
|---------------|---|-----|-----|
| DWR3 | DISHWASHER PANEL 3" FACE FRONT 24D 34-1/2"H x 1/2" PLYWOOD | 54 | 54 |
| REF-9636-3/4" | REFRIGERATOR END PANEL 36"D X 96 H X 3/4 THICK | 165 | 165 |

MATCHING WALL END PANEL (DECO DOORS)



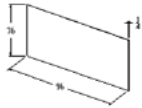
| | | | |
|----------|----------------------------------|----|----|
| MWEP1230 | MATCHING DECO WALL END PANEL 30" | 68 | 68 |
| MWEP1236 | MATCHING DECO WALL END PANEL 36" | 80 | 80 |
| MWEP1242 | MATCHING DECO WALL END PANEL 42" | 96 | 96 |

MATCHING BASE END PANEL (DECO DOORS)



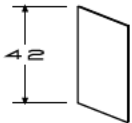
| | | | |
|--------|------------------------------|-----|-----|
| MBEP24 | MATCHING DECO BASE END PANEL | 114 | 114 |
| MBEP25 | MATCHING DECO BASE END PANEL | N/A | N/A |

**BASE PANEL SKIN 96W 36H 1/4" PLYWOOD
Horizontal Grain**



| | | | |
|---------------|---|-----|-----|
| TEP-9636-1/4" | BACKING SKIN PANELS 1/4" PLYWOOD <i>Remember to order OC8 (OUT SIDE MOLDING 8' WOOD) for edges</i> | 116 | 116 |
|---------------|---|-----|-----|

WALL CABINET SIDE SKIN 1/4" (For expose sides)



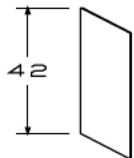
| | | | |
|------------|--|----|-----|
| WSS42-12 | WALL SIDE SKIN 42"H x 11-1/8"D x 1/4" THICK | 14 | N/A |
| WSSDC42-15 | WALL SIDE SKIN 42"H x 13-7/8"D x 1/4" THICK USE PAINTED CABINET PANELS IN PLACE OF SKINS | 16 | N/A |

BASE CABINET SIDE SKIN 1/4" (For expose sides)



| | | | |
|--------|--|----|-----|
| BSS | BASE SIDE SKIN 34-1/2"H x 23-1/8"D x 1/4" THICK USE PAINTED CABINET PANELS IN PLACE OF SKINS | 25 | N/A |
| PCSS96 | PANTRY SIDE SKIN 96"H x 23-1/8"D x 1/4" THICK | 60 | 60 |

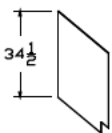
WALL CABINET PAINTED SIDE PANEL 3/4" (For exposed sides)



| | | | |
|---------|-------------------------------------|----|----|
| WP-1230 | WALL PANEL 30"H x 12"D x 3/4" THICK | 22 | 22 |
| WP-1236 | WALL PANEL 36"H x 12"D x 3/4" THICK | 27 | 27 |
| WP-1242 | WALL PANEL 42"H x 12"D x 3/4" THICK | 30 | 30 |

PAINTED CABINET PANELS TO REPLACE ORIGINAL NON-PAINTED CABINET SIDES

BASE CABINET PAINTED SIDE PANELS 3/4" (For exposed sides)

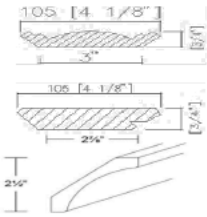


| | | | |
|-----------|---|----|----|
| BP-2134 L | BASE PANEL 34-3/4"H x 21"D x 3/4" THICK | 39 | 39 |
| BP-2134 R | BASE PANEL 34-3/4"H x 21"D x 3/4" THICK | 39 | 39 |
| BP-2434 L | BASE PANEL 34-3/4"H x 24"D x 3/4" THICK | 44 | 44 |
| BP-2434 R | BASE PANEL 34-3/4"H x 24"D x 3/4" THICK | 44 | 44 |

PAINTED CABINET PANELS TO REPLACE ORIGINAL NON-PAINTED CABINET SIDES

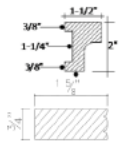
| DOOR STYLE | White Shaker | Premier Shaker Java Shaker |
|-------------------|---------------------|---------------------------------------|
|-------------------|---------------------|---------------------------------------|

TOP WALL MOLDINGS



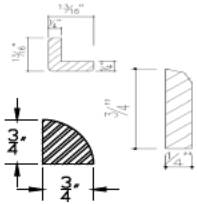
| | | | |
|--------------|--------------------------------|-----|-----|
| ORM8 | CROWN MOLDING 8' WOOD 4" | 100 | 100 |
| FM8-1 | FLAT SHAKER MOLDING 8' WOOD 4" | 90 | 90 |
| COVE MOLDING | COVE MOLDING 4" | 90 | 90 |

BOTTON WALL MOLDINGS



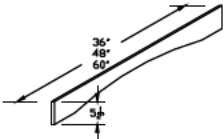
| | | | |
|----------|--|----|----|
| LR8-M | LIGHT RAIL MOLDING 8' WOOD | 80 | 88 |
| VCM8 | BOTTOM MOLDING UNDER WALL CABINETS 3/4\"H - 8' | 47 | 47 |
| LR8-FLAT | Light Rail Flat Morden Moulding | 80 | 80 |

SIDE & BASE MOLDINGS



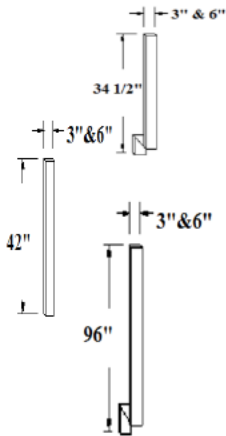
| | | | |
|-----|-------------------------------|----|----|
| OC8 | OUT SIDE CORNER MOLDING | 30 | 30 |
| SM8 | SCRIBE MOLDING 8' WOOD | 16 | 16 |
| QR8 | QUARTER ROUND MOLDING 8' WOOD | 28 | 28 |

WOOD ARCHED VALANCE



| | | | |
|-------|-------------|-----|-----|
| VAL36 | VALANCE 36" | 94 | 94 |
| VAL48 | VALANCE 48" | 120 | 120 |
| VAL60 | VALANCE 60" | 130 | 130 |

FILLERS, TOEKICK , SAMPLE DOORS



| | | | |
|-------|---|-----|-----|
| BF3 | BASE FILLER 3" x 34 1/2" x 3/4" | 20 | 20 |
| BF6 | BASE FILLER 6" x 34 1/2" x 3/4" | 36 | 36 |
| WF342 | WALL FILLER 3" x 42" x 3/4" | 22 | 22 |
| WF642 | WALL FILLER 6" x 42" x 3/4" | 46 | 46 |
| WF336 | WALL FILLER 3" x 36" x 3/4" | N/A | N/A |
| WF636 | WALL FILLER 6" x 36" x 3/4" | N/A | N/A |
| TF396 | TALL FILLER 3" x 96" x 3/4" (FOR 84",90",96") | 52 | 52 |
| TF696 | TALL FILLER 6" x 96" x 3/4" (FOR 84",90",96") | 83 | 83 |
| TK-8 | TOEKICK 8'L x 1/8" THICK x 4-1/2"W PLYWOOD | 30 | 30 |

| | | |
|-------------------|---------------------|---------------------------------------|
| DOOR STYLE | White Shaker | Premier Shaker Java Shaker |
|-------------------|---------------------|---------------------------------------|

GLASS DOORS

SINGLE GLASS DOOR

| | | | |
|---------|-----------------------------|-----|-----|
| GD-1530 | WALL 1530 SINGLE GLASS DOOR | 130 | 130 |
| GD-1536 | WALL 1536 SINGLE GLASS DOOR | 130 | 130 |
| GD-1542 | WALL 1542 SINGLE GLASS DOOR | 130 | 130 |

SINGLE GLASS DOOR

| | | | |
|---------|-----------------------------|-----|-----|
| GD-1830 | WALL 1830 SINGLE GLASS DOOR | 135 | 150 |
| GD-1836 | WALL 1836 SINGLE GLASS DOOR | | 180 |
| GD-1842 | WALL 1842 SINGLE GLASS DOOR | 135 | 200 |

SINGLE GLASS DOOR

| | | | |
|---------|-----------------------------|-----|----|
| GD-2130 | WALL 2130 SINGLE GLASS DOOR | 135 | 97 |
|---------|-----------------------------|-----|----|

PAIR GLASS DOORS

| | | | |
|---------|------------------------------|-----|-----|
| GD-2430 | WALL 2430 SINGLE GLASS DOORS | 150 | 160 |
| GD-2436 | WALL 2436 SINGLE GLASS DOORS | 180 | 230 |
| GD-2442 | WALL 2442 SINGLE GLASS DOORS | 200 | 240 |

PAIR GLASS DOORS

| | | | |
|---------|------------------------------|-----|-----|
| GD-3030 | WALL 3030 SINGLE GLASS DOORS | 260 | 260 |
| GD-3036 | WALL 3036 SINGLE GLASS DOORS | 260 | 260 |
| GD-3042 | WALL 3042 SINGLE GLASS DOORS | 260 | 260 |

PAIR GLASS DOORS

| | | | |
|---------|------------------------------|-----|-----|
| GD-3630 | WALL 3630 SINGLE GLASS DOORS | 270 | 300 |
| GD-3636 | WALL 3636 SINGLE GLASS DOORS | 300 | 320 |
| GD-3642 | WALL 3642 SINGLE GLASS DOORS | 300 | 230 |

SINGLE GLASS DOORS

| | | | |
|------------|---|-----|-----|
| GD-WDC2430 | WALL DIAGONAL CORNER 2430 SINGLE GLASS DOOR | 100 | 120 |
| GD-WDC2436 | WALL DIAGONAL CORNER 2436 SINGLE GLASS DOOR | 130 | 140 |
| GD-WDC2442 | WALL DIAGONAL CORNER 2442 SINGLE GLASS DOOR | 150 | 160 |

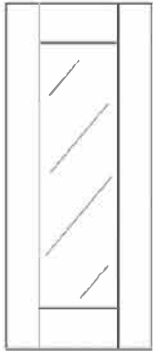
SINGLE GLASS DOORS

| | | | |
|--------------|---|-----|-----|
| GD-WDC273615 | WALL DIAGONAL CORNER 273615 SINGLE GLASS DOOR | 100 | 130 |
|--------------|---|-----|-----|

SINGLE WHITE GLASS DOOR WITH ALUMINIUM FRAME

FOR A MODERN LOOK IN SHAKER MODELS

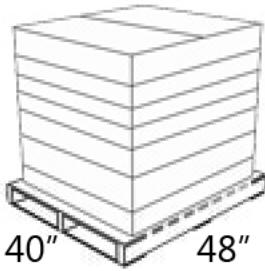
| | | | |
|-----------|---|-----|-----|
| GDAL-1230 | W-1230 ALUMINIUM FRAME WHITE GLASS DOOR | 100 | 10 |
| GDAL-1236 | W-1230 ALUMINIUM FRAME WHITE GLASS DOOR | 110 | 110 |
| GDAL-1530 | W-1530 ALUMINIUM FRAME WHITE GLASS DOOR | 110 | 110 |
| GDAL-1536 | W-1536 ALUMINIUM FRAME WHITE GLASS DOOR | 110 | 110 |
| GDAL-1830 | W-1830 ALUMINIUM FRAME WHITE GLASS DOOR | 120 | 120 |
| GDAL-1836 | W-1836 ALUMINIUM FRAME WHITE GLASS DOOR | 130 | 130 |



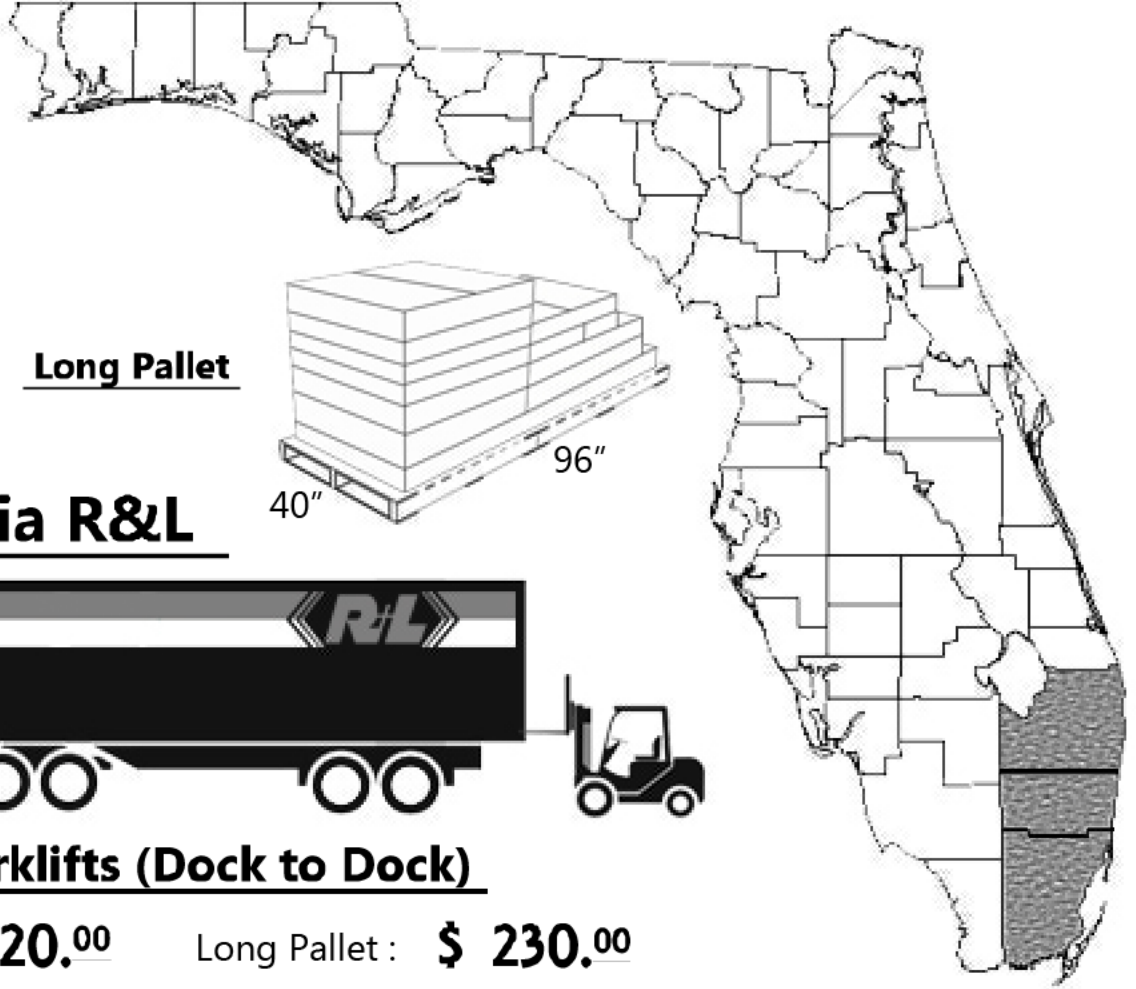
SHAKER STYLE



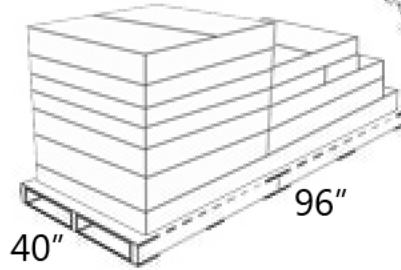
FL Delivery Options



Single Pallet



Long Pallet



LTL Carrier via R&L



Business with Forklifts (Dock to Dock)

Single Pallet : **\$ 120.00**

Long Pallet : **\$ 230.00**

Residential and Lift Gate Service



Single Pallet : **\$ 180.00**

Long Pallet : **\$ 290.00**

* Some location rates may not apply or be available in LTL. Please ask your sales representative for more information.

Curbside Deliverys with Lift Gate

Miami Dade County | Broward County | Palm Beach County
\$ 90.00 / Order **\$ 160.00 / Order** **\$ 220.00 / Order**



* All details are subject to change.

* UPS is available for selected items.

* All assembled orders cannot be delivered via LTL carrier, only available by local curbside service. For more details, please ask your sales representative.



KB Kitchen Bath & Floors

"We make dreams come true"

2790 SE FEDERAL HWY, STUART, FL 34997

T. 772 207 0821 / 772- 207 0627

Credit Card Authorization Form

I, _____ hereby authorize KB KITCHEN BATH CABINET DISTRIBUTOR to charge my credit card the amount of US\$ _____ for the product and services in the amount listed on (EST# / SO# / INV#) _____ related to PO# _____

VISA

MASTER CARD

CARD HOLDER NAME _____

CREDIT CARD # _____

EXPRATION DATE: _____ / _____

SECURITY CODE _____

CARD HOLDER SIGNATURE: _____

DATE SIGNED: _____

BILLING-MAILING ADDRESS OF THE CARD:

PHONE NUMBER: _____

COMPANY NAME: _____

Special Instruction: _____



KB Kitchen Bath & Floors

"We make dreams come true"

Damage Claim Process



1) Claims are to be processed at the time the boxes are opened, not after.



2) Concealed damage claims will be apparent at time of box opening, not after.



3) Take a quick moment to snap a picture of the damage or damages on the product



4) Include also a picture of the box and if it's a shipping damage, a picture of box damage



5) Email KBKitchenBathAndFloors@gmail.com or text to 772 207 0821 include company name and sales order/invoice number or PO number



6) Reseal and set aside for return
7) Following this process, a replacement will be ready for pick up or shipment the following day





KB Kitchen Bath & Floors

"We make dreams come true"

Damage Claim Process



Returns or exchanges are not allowed on assembled or installed cabinets. Only exception is warped doors

Drilled doors or frames are not refundable or valid for replacement

We only cover items following the claim process guidelines and require pictures prior to approval or return authorization



To process a claim email
KBKitchenBathAndFloors@gmail.com
or text to 772-207 0821 include
company name and sales
order/invoice number or PO number

