

# COLOR CHART



## NEVERFADE® FAÇADE RESTORATION COATINGS

Standard and mica-based color offerings  
for NeverFade® topcoat systems

APV ENGINEERED COATINGS, INC.  
1390 Firestone Parkway  
Akron, Ohio 44301  
1.800.772.3452  
sales@apvcoatings.com  
[www.neverfadecoatings.com](http://www.neverfadecoatings.com)

FORMULATED  
WITH

KYNARAQUATEC®  
BY ARKEMA



PROVEN  
LONG-TERM  
FADE  
RESISTANCE

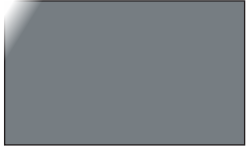
# MICA COLORS



Anodized Black



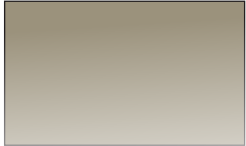
Dark Bronze



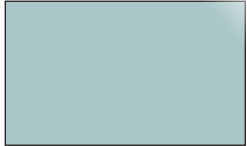
Pewter



Silver Metallic



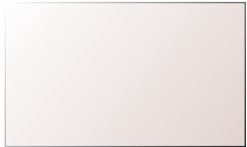
Stainless Silver



Light Blue Steel



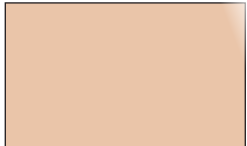
Metallic Silver



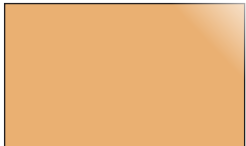
Bright Silver



Rustic Gold



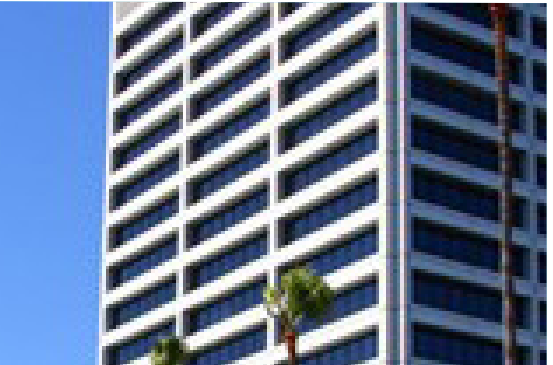
Champagne



Pure Gold



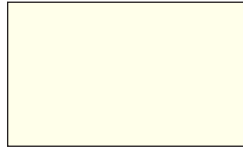
Copper



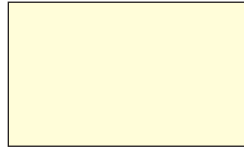
# SOLID COLORS



Pure White



Colonial White



Coconut



Graphite



Standard Black



Solid Silver



Cool Gray



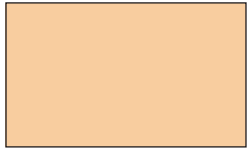
Slate Gray



Lexington Gray



Dark Bronze



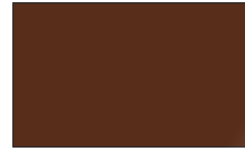
Beige Stone



Soft Sandstone



Oyster



Kona Brown



Sienna Brown



Navy



Caper Green



???

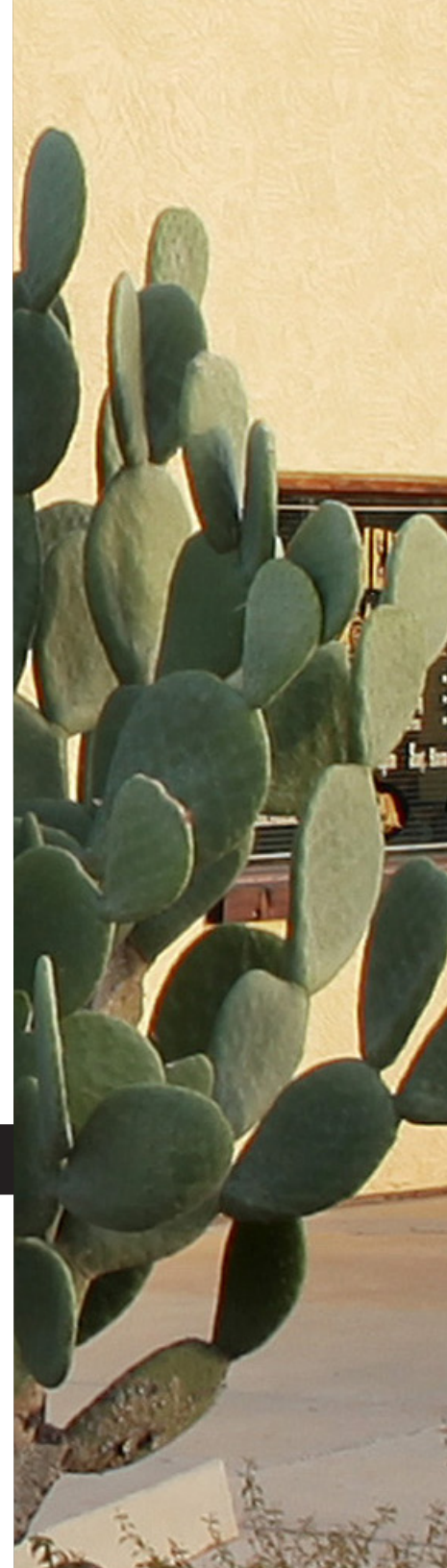


Flower Pot



Crabby Apple

# TOPCOAT FORMULATIONS





**APV ENGINEERED COATINGS, INC.**  
1390 Firestone Parkway  
Akron, Ohio 44301  
1.800.772.3452  
sales@apvcoatings.com  
[www.neverfadecoatings.com](http://www.neverfadecoatings.com)



NeverFade® is a trademark belonging to APV Engineered Coatings, Inc.  
Sold under a trademark license from ARKEMA INC. which is the owner of the KYNAR and KYNAR  
AQUATEC Trademarks.