



# DUO-SIL Ultra<sup>®</sup> Color Guide

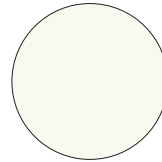
**ADVANCED HYBRID POLYMER SEALANT & ADHESIVE**



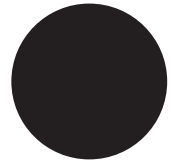
# DUO-SIL Ultra®

A Perfect Match for Every Application

TOP  
**20**  
COLORS



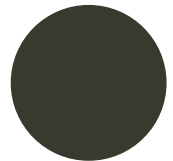
**30001**  
WHITE



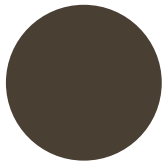
**33003**  
BLACK



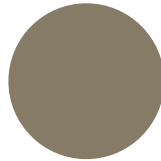
**30804**  
PEARL



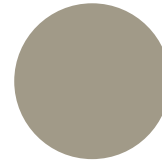
**33201**  
BRONZE



**33203**  
MUSKET BROWN



**33303**  
CLAY



**33403**  
WICKER



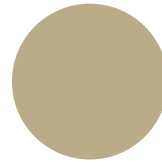
**33426**  
WOODLAND MIST



**33427**  
ALMOND CREAM



**33428**  
TAN



**33429**  
BEIGE



**33435**  
ALMOND BEIGE



**33443**  
IVORY CREAM



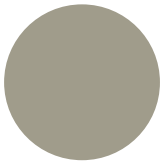
**33448**  
ANTIQUE WHITE



**33451**  
PARCHMENT



**33454**  
FRENCH VANILLA



**33458**  
COBBLESTONE CLAY



**33502**  
SILVER ASH



**33520**  
CHARCOAL BASE



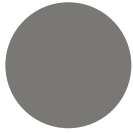
**33942**  
ANTIQUE LINEN

For more information, please visit: [www.bostik.com/colorlist](http://www.bostik.com/colorlist)

# DUO-SIL Ultra<sup>®</sup>

## James Hardie ColorPlus<sup>®</sup>

---



**38003**  
AGED PEWTER



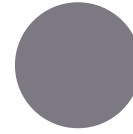
**39524**  
AQUA MARINE



**39081**  
ARCTIC WHITE



**30609**  
AUTUMN TAN



**32468**  
BOOTHBAY BLUE



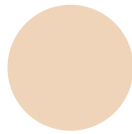
**32473**  
CHESTNUT BROWN



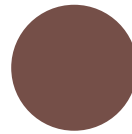
**30607**  
COBBLESTONE



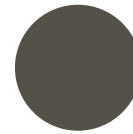
**30101**  
COOL BREEZE



**30801**  
CORAL COAST



**32449**  
COUNTRYLANE RED



**33524**  
DEEP OCEAN



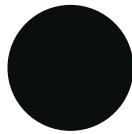
**38001**  
EVENING BLUE



**38002**  
GRAY SLATE



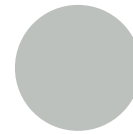
**30112**  
HEATHERED MOSS



**32466**  
IRON GRAY



**32740**  
KHAKI BROWN



**39084**  
LIGHT MIST



**32471**  
MONTEREY TAUPE



**33537**  
MOUNTAIN SAGE



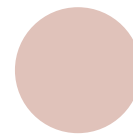
**30804**  
NAVAJO BEIGE



**32480**  
NIGHT GRAY



**30907**  
PEARL GRAY



**39280**  
PINK SAND



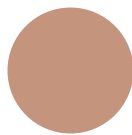
**32479**  
RICH ESPRESSO



**35202**  
SAIL CLOTH



**30909**  
SANDSTONE BEIGE



**32430**  
TERRA COTTA



**32472**  
TIMBERBARK



**30209**  
WOODLAND CREAM



**38005**  
WOODSTOCK BROWN

Color samples are printed reproductions and should only be used as approximate guides to appearance. Actual shade will depend on lighting and other factors beyond Bostik's control. It is recommended to verify appearance with a test area before main installation.

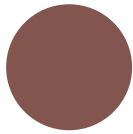
# DUO-SIL Ultra<sup>®</sup>

## Allura ColorMax<sup>®</sup>

---



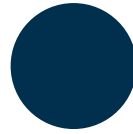
**33450**  
ASHEN



**32443**  
AUTUMN RED



**32491**  
BARK



**32964**  
CALVARY



**30209**  
CARAMELIZED PEARS



**32463**  
COASTAL BLUE



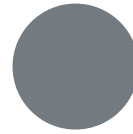
**38003**  
COOL CHARCOAL



**30112**  
CYPRESS



**30804**  
DESERT TAN



**32468**  
FLAGSTONE



**33539**  
FOREST



**38006**  
GRANITE GRAY



**31103**  
GRAY HERON



**32478**  
HEARTHSTONE



**32939**  
KNIGHTS ARMOR



**30910**  
LIGHT MAPLE



**30612**  
LINEN



**30111**  
MARIGOLD



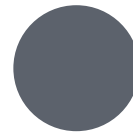
**30120**  
NANTUCKET GRAY



**32740**  
NATURAL CLAY



**30105**  
OLIVE



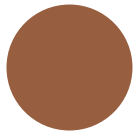
**32462**  
PACIFIC BLUE



**30878**  
PEWTER



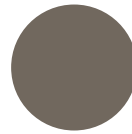
**32159**  
PLUNGE POOL



**30758**  
RED ROCK FALLS



**30609**  
ROCK CLIFFS



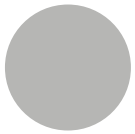
**32474**  
SABLE BROWN



**30608**  
SAVANNAH WICKER



**30103**  
SNOW



**39084**  
STERLING GRAY



**30913**  
SUEDE



**30118**  
TAUPE



**NEW LOOK!  
SAME GREAT PRODUCT!**



# DUO-SIL Ultra®

**ADVANCED HYBRID POLYMER SEALANT & ADHESIVE**

## KEY FEATURES

- Wet surface application
- Shrink, crack and fade resistant
- Bonds to Kynar® resin-based coatings

## DESCRIPTION

Bostik DUO-SIL Ultra® is specifically designed to meet the needs of the professional contractor. It is a superior, all-purpose adhesive and sealant combining enhanced ease of application with long-term performance.

DUO-SIL Ultra® as a sealant can be used on vinyl, aluminum and fiber cement siding, windows, doors, column joints, gutters, roofs, brick molding, counter tops, interior trim, showers and most areas where a sealant is needed.

DUO-SIL Ultra® as an adhesive has superior bond to most building substrates and will adhere to wood, metal, most Kynar® resin-based coatings, gypsum board, vinyl, PVC, cove base, molding, foam board and many more building products.

## PRODUCT FEATURES

- All weather application - wet, damp, dry surfaces
- 0° (-18°C) to 140°F (60°C) application temperature
- Paintable in one hour
- Available in 70+ industry colors in stock
- Meets or exceeds the requirements of ASTM C920, Class 50
- Meets the performance requirements of AAMA 803.3-10
- Interior/exterior applications including siding, windows, doors, trim and mouldings
- Superior adhesion and sealing
- Environmentally safe, non-hazardous, non-flammable, and low VOC
- Non-yellowing formula
- Two-piece plastic cartridge will not deteriorate when exposed to the elements
- 4" detachable nozzle for repeated use and increased efficiency

## PACKAGING

Available in 9.5 fl oz (266ml) cartridges – 12 per case.  
140 cases per pallet.

Available in 20 fl oz (591ml) sausages, white only – 12 per case.  
45 cases per pallet.



**70+**  
**IN STOCK**  
**INDUSTRY COLORS**



**For more information, contact us at:**  
1-800-359-6398 | [www.bostik.com/us](http://www.bostik.com/us)



Bostik is a leading global adhesive specialist in industrial, construction and consumer markets. For more than a century, we have been developing innovative adhesive solutions that are smarter and more adaptive to the forces that shape our daily lives.

An **ARKEMA** Company  
INNOVATIVE CHEMISTRY