

ListBox Neo

Programme Scheduling and Playlist Creation

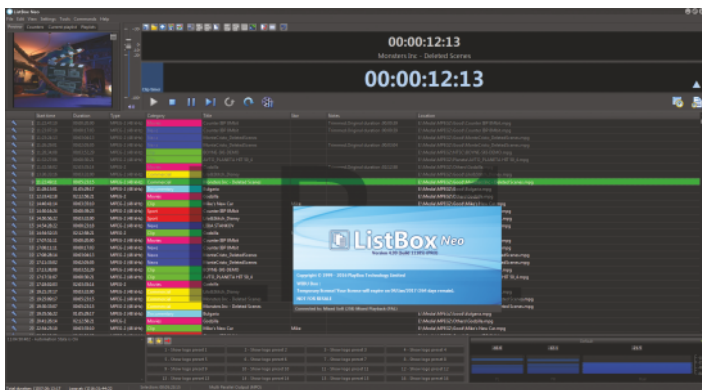


Sophisticated editing facilities

ListBox Neo provides all necessary editing facilities for convenient playlist creation. You will find all expected features such as searching, cut/copy/paste, multi-selection editing, ordering facilities, playlist printing, and last but not least - multi-level undo/redo.

Last-minute clip editing

Simple clip editing tools are provided within the integrated clip trimmer. It allows discarding unnecessary footage, clip splitting and last-minute order reversal within the same clip. Forget about returning the clip back to the editing suite - no need and no time! You can even edit the on-air playlist, AirBox Neo will automatically reload the new playlist on the next event.



Traffic system integration

ListBox Neo imports traffic logs from third-party scheduling and traffic systems. This is achieved by using our universal tab-delimited and comma separated values (CSV) and flat fixed-width text import engine.

Excellent price/performance ratio

ListBox Neo does not require expensive hardware or ultra-fast workstations, thus avoiding unnecessary expenses. All content previewing and editing is done by the software itself.

Straightforward, user-friendly interface

No need to learn from scratch. ListBox Neo user interface looks quite familiar as a standard Windows software. Most users start instantly working with it even without reading the User's Manual.

Playback Preview

Currently edited playlist can be played back on PC monitor for preview purposes.

- ListBox Neo is an offline schedule editor, providing sophisticated editing facilities such as text searching, clip copying/pasting, schedule printing, etc.

- It is the main tool for the Program Editors, enabling them to create and edit schedules many days and weeks in advance.

- No special server or hardware is required. ListBox Neo runs flawlessly even on a notebook, even with software-based trimming and previewing.

NEO

For more information please see www.playboxtechnology.com



ListBox Neo Specifications

Media File Formats

MPEG2	MPG or M2P -Program Streams M2T or TS - Transport Stream OpenDML AVI and WAV (mono and stereo) QuickTime, MXF, GXF
DV	OpenDML Type 1 and Type 2 AVI, QuickTime, Raw DV, MXF, GXF
HDV	MPG or M2T / TS - Transport Stream QuickTime, MXF, GXF
H.264 / AVC / MPEG4 part 10	TS - Transport Stream
WMV /VC-1	WMV - Windows Media Video
MPEG1	MPG - System Stream
HAVC/H.265	Transport Stream, QuickTime

Playlist Events

Fixed-time	Schedule timed events
Stop	Stops playback execution until manual resuming
Wait	Stops playback execution for a pre-defined period
Wait until	Stops playback execution until a specified time
GPI	Sends GPI triggers to external devices
Matrix switcher	Sends commands to external switchers
VTR	Allows tape-based events in the playlist
TitleBox control	Sends titling commands to TitleBox Neo modules
Logo on/off	Displays or hides the designated logo presets
Notes	Useful for playlist-related custom information

PlayBox Technology Commercial HQ
Tel.: +44 1707 66 44 44, Fax: +44 1707 66 11 55
e-mail: sales@playboxtechnology.com

PlayBox Technology R&D Centre
Tel.: +359 2 423 79 11
e-mail: rnd@playboxtechnology.com

PlayBox Technology Asia Pacific
Tel.: +603 7661 0478, Fax: +603 7661 0970
e-mail: sales.asia@playboxtechnology.com

PlayBox Technology India
Tel.: +91 11 41093333, Fax: +91 11 41010033
e-mail: sales.india@playboxtechnology.com

PlayBox Technology ME
Tel.: +44 1707 66 44 44, Fax: +44 1707 66 11 55
e-mail: sales.me@playboxtechnology.com

PlayBox Technology UK
Tel.: +44 1707 66 44 44, Fax: +44 1707 66 11 55
e-mail: sales.uk@playboxtechnology.com

PlayBox Technology USA
Toll Free: +1 844 611 4444
e-mail: sales.usa@playboxtechnology.com



Rev.: November 2017

PLAYBOX
TECHNOLOGY

