



SAFEBOX USER MANUAL

(Version: 2.3, March 2020)

Current software versions:

SafeBox Mega: 12184.0

This guide explains in detail all functionalities of the **SafeBox** modules.



Legal notice

The information in this manual is furnished for informational use only. No part of this manual may be reproduced or transmitted in any form or by any means, electronic or mechanical, for any purpose, without the prior written permission of Playbox Technology UK Limited.

The software, described in this manual, is owned by Playbox Technology UK Limited. It is protected by Copyright Law of England and Wales, as well as by international copyright treaties, and may be used or copied only in accordance with the license agreement.

Playbox Technology UK Limited provides this manual "as is" without any warranty, either express, or implied.

This publication may contain typographical errors or technical inaccuracies. While every precaution has been taken in the preparation of this document, Playbox Technology UK Limited assumes no responsibility for errors or omissions. Nor is any liability assumed for damages, resulting from the use of the information, contained herein. Changes are periodically made to the information herein. They will be incorporated in new versions of the manual. Please, check the **PlayBox Technology UK Limited** [website](#) regularly for User Manual updates.

Playbox Technology UK Limited may introduce changes or improvements in the products, described in this manual at any time, without any special notice.

Please, address your comments or questions to:

Playbox Technology UK Ltd

Brookmans Park Teleport

Great North Road

Hatfield AL96NE

United Kingdom

www.playboxtechnology.com

support@playboxtechnology.com



Contents

Legal notice	2
Contents	3
Preface	4
Style Conventions	5
GETTING STARTED	6
Installation	6
USER INTERFACE	6
SAFEBOX OPTIONS	7
General	7
Removal	9
Schedule	10
OML	11
Attached files	12
EXPORT MEDIA INFO	12



Preface

Dear **PlayBox** customer,

Thank you for purchasing our product! We would like to assure you that you have chosen the most cost-effective and versatile TV automation system on the market. As always, we are trying to stay close to our customers' needs, making sure they all receive adequate support and satisfaction. Your opinion about our product is an exceptionally valuable source of information for us. The ease of working with the **PlayBox** products results mainly from the suggestions and comments of our current respected customers.

This manual is structured into several sequential chapters, each aiming to ease the installation, fine tuning, and use of our products. We hope that you will enjoy working with it, and we are anxiously looking forward to receiving your feedback.

Please, send your questions, suggestions, and assistance requests to:

support@playboxtechnology.com

General feedback:

info@playboxtechnology.com



Style Conventions

- File names, software, documents or terms are written in *italics*
 - The data is written in the *settings.ini* file.
 - The file is located in C:\Program Files\DMT\AirBox
 - For further information read *Shortcuts* reference book.
 - The VTR is controlled via *RS-422*.
- Direct quotations from the computer screen are presented as follows:
 - **Menu Items and commands**
 - **Tab/Page names**
 - **Column names (i.e. in a playlist or another grid)**
 - *Field names, check boxes*
 - **Buttons**
 - Screen readings are written in [square brackets]
 - **The keyboard keys are enclosed in <> signs**
 - *Terms are defined in the Glossary at the end of the manual*
- The arrows, used in the setting procedures mean as follows:
 - → A menu item follows;
 - ⇒ A page(tab) name follows;
 - → A field name, a check box name, or a value name follows.

Except for arrows, you can distinguish between the relevant menu categories also by the styles, listed above.

SafeBox User Manual



SafeBox is another module from the **PlayBox** suite, which serves as utility for file management. **SafeBox** takes care of moving, copying or deleting your files, automatically or manually. This is done following a number of pre-definable locations, priorities and rules.

GETTING STARTED

Installation

Where to Install it

SafeBox is usually installed under folder **C:\Program Files\PlayBox Technology Ltd\SafeBox**

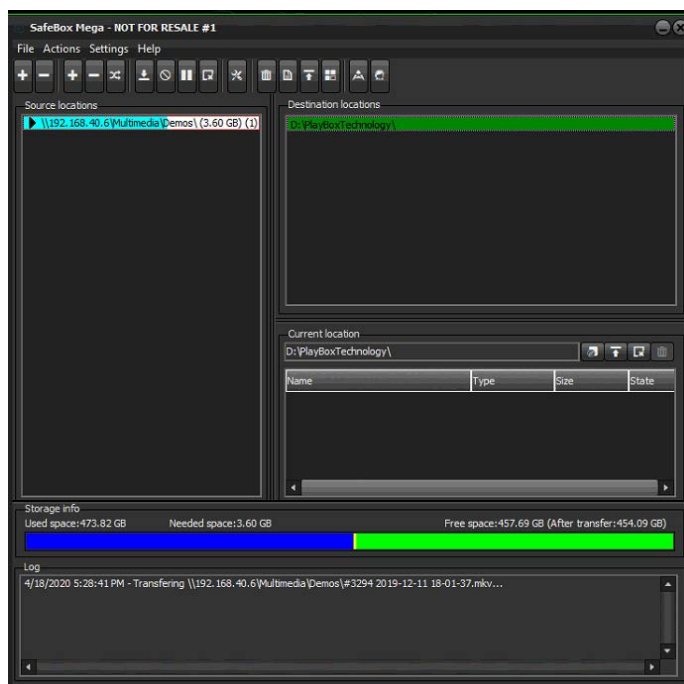
The **SafeBox** icon will appear in the **Toolbar** .


USER INTERFACE

The user interface is quite simple: it is divided into two major parts – your *Source* and *Destination* locations:

Typically, the *Destination* is the location, from which **AirBox** is playing clips, but **SafeBox** can be used for copying all kinds of content you have – not only clips and playlists. The *Destination* location can be either on the local storage (from the point of view of **AirBox**, for example) or somewhere on the network, but a local one is advisable. In short, these are permanently accessible storage destinations.

The *Source* locations are locations, where your files are stored or where files appear if you use some kind of removable storage or network connection. In




short, these are temporary accessible locations. You can add to the list as many *Source* locations as you wish. This is done by simple browsing after pressing the **Add** button  to the far left.

You can give priorities for each *Source* location. This is done by right-clicking on the relevant location and selecting the desired Priority.

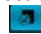
NOTE: Priorities are valid only in *Automatic* mode! The highest priority is [10].


SafeBox User Manual





Along the upper part of the main window are situated the control buttons. The first pair of plus and minus signs  is used for adding/deleting *Source* locations. The second pair is designed for the *Destination* locations.


Further on are situated the transfer control buttons. They provide hints at pointing at them.

SafeBox allows multiple assignments, i.e. you can transmit a given source content to more than one destination location: select a *Source location* (it will be marked in dotted-line frame) then select the desired online location in the list to the right. Press the **Assign/Decline**  button. The assigned destination line will become green. You can view the assigned destination(s) of a source location by selecting its row. All destinations will go green. You can decline a destination location by pressing the **Assign/Decline** button once again.

After assigning all destinations, select one or more of the *Source* location and press  button to start the file transfer manually.


The transfer could be canceled at any time by selecting the desired *Source* location and pressing the  button. If you want just to pause/resume the transfer, press  button.

Press  button to remove content of the selected *Source* location.

Press the  **About** button to check the information about the current software version and your dongle.


In case you need to generate a **PlayBox** Doctor report, press the Red Cross button to start it. Just fill-in the mandatory fields, everything else will be done automatically. You can read more about the **PlayBox** Doctor in the Basic **PlayBox** manual.

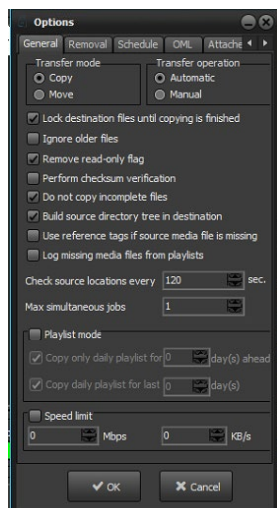
A  sign in front of a given *Source* location means that it is currently accessible.

A  sign in front of a *Source* location means that it is currently inaccessible. When a source location is being transferred, a symbol representing the currently executed action appears in front of it. A colored bar in its line displays the progress of transfer.

Along the lower mid-window is situated a colored bar that represents the distribution of the storage (Destination location) space. The blue section stands for *Used space*; the yellow one – the space needed for transfer of the selected offline content; and the green one represents the free space, which will remain after the transfer.

SAFEBOX OPTIONS

Set this in the **Options** menu after pressing the **Options** button .



General

The supported **General** options are listed here.

SafeBox User Manual



Transfer mode – select **Copy**, if you just want to copy files from *Source* location to *Destination* location and select **Move**, if you want to move the files.

Transfer operation - **SafeBox** could perform all necessary actions manually (select **Manual** radio button) or automatically (select **Automatic**).

Lock destination files until copying is finished – this check will not “allow” **AirBox** to start playing out a file that is currently being copied. This will prevent unexpected end of the video when the copied part of the file is over.

Ignore older files – this means “Do Not Copy Older Files”. Thus, if the same file has different “last modified” date on the Source and the Destination folder, and the Source file is older, **SafeBox** will not copy it to the Destination. **SafeBox** will log a message every time a newer file is replaced with an older file.

NOTE: This option is un-checked by default which means that **SafeBox** will overwrite the newer files in the Destination folder with older files from the Source folder!

Remove read-only flag will allow you to edit the content after its replication. If this box is not checked, the copied content will not be editable; you will not be able to delete it, either.

Perform checksum verification will check if the transferred files in the Destination folder are identical to those in the Source folder. Thus, you will be notified any time there is some difference between the source file and its copy.

Do not copy incomplete files will not transfer files that are currently open by another program or user.

Build source directory tree in destination. When ingesting content that contains folders and subfolders, **SafeBox** could proceed in two ways: preserve the tree-structure of the source location (if checked); or save all files from the source in a single folder (if not checked).

Use reference tags if source media file is missing.

SafeBox creates a “reference” tag to each media file into the playlist. In this tag is described the source location of each file.

For example, let in the source playlist there is a file `\\network\e\mediafiles\filename.mpg`. Into the destination playlist, there will be the same file, but with a local path – `e:\on-air-files\filename.mpg`. Into reference tag **SafeBox** will put the information about the original location of the file (`\\network\e\mediafiles\filename.mpg`).

Check *Use reference tags if source media file is missing*, if you want **AirBox** to use the information from this reference tag. This will be very useful in case when the playlist is already loaded and started in **AirBox**, but not all files are copied to the destination location. This way **AirBox** can “read” from the “reference tag” where the original file is located, and can play it directly from this location, through the network.

Log missing media files from playlists.

Check this check-box to see any information about missing files from source playlist. The information appears into **SafeBox** log-box

Below, into *Check source locations every...sec*, you can set the period of time for checking the source locations for new files. By default, this period is set to 120 seconds.

In the *Max simultaneous jobs* field you can set the number of transfers to be performed at a time.

NOTE: The higher this number is the slower transfer (for a separate file) will proceed.

NOTE: In automatic mode, simultaneous jobs are performed only for locations with equal priorities.

PlayList mode. In this mode, **SafeBox** will search the *Source* directory only for playlist files (*.ply*) and will copy/move them to the *Destination* directory. Besides, it will search for, and copy/move all the files contained in the playlist following their file paths. After copying/moving the files to the *Destination* folder, **SafeBox** will change their file paths in the playlist to match the *Destination* location, so that there is no need to change them manually.

SafeBox User Manual



NOTE: The playlist(s) and their related files will be copied/moved to the same *Destination* directory.

NOTE: In *PlayList mode*, the option "*Build source directory tree in destination*" will work only if the *Destination* directory contains the same root folder, as the *Source* directory.

For example, if your playlist *Source* folder is `\\PC_Name\video\playlists` and the related video files are located in its subfolders (`\\PC_Name\video\playlists\folder1`; `\\PC_Name\video\playlists\folder2`; etc.), then into the *Destination*, you must have the same folder, `PC_Name\video\playlists`. Only in this case **SafeBox** can build the same folder tree in the *Destination*.

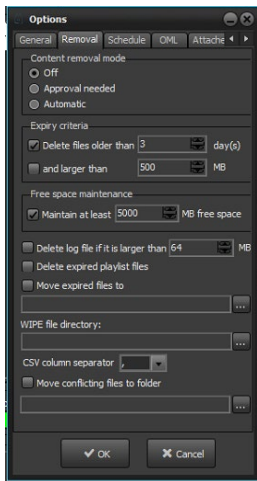
WARNING! Make sure to use real network paths when creating your playlists! Do not use mapped drives when pointing to the media files locations! Thus, you will ensure that all files needed for the playlists are visible from the SafeBox PC and will be copied properly.


In order not to clog the *Destination* directory, you can check *Copy only daily playlists for...* box and specify the number of days in the spin-box to the right.

Check the *Speed limit* box if you wish to change the process duration. Below, you can either use the spin-boxes to set the transfer rate, or type it directly in the relevant field. The values in the Mbps field will be converted into KB/s automatically and vice-versa.

NOTE: The higher you set the transfer rate values, the higher CPU usage will occur.

Removal



In the **Removal** options tab, you can specify the way **SafeBox** maintains file removal in the *Destination* directories. These options can be turned *Off* if not needed. If *Approval needed* is selected, you will have to go to the Removal list  and delete the files you want from there. In the following field, you can set the expiry criteria for content removal:

If you check the *Delete files older than...* box, all files will be deleted when the period you have specified is over. File modification date is used as a reference for the expiration date.

SafeBox User Manual



IMPORTANT: The number of days must not be less than 1 (one)!

If you check the box underneath as well, only files larger than the specified size will be deleted.

You could also manage files according to the free disc space on your computer:

Maintain at least [...] MB free space will delete any files, regardless their type, in order to achieve the required space.

Delete log file if it is larger than ...MB – here you have to enter the maximum allowed size of the **SafeBox** log file. All files larger than this size will be deleted.

The next check-box concerns the management of playlist files (*.ply) that fit the expiration criteria.

If *Delete expired playlist files* is checked, all playlist files in the *Destination* directory that fit the expiration criteria will be deleted without notification. If not checked, the playlist files will not be deleted even if they have expired according to the criteria set above.

You can move all expired files to a specified folder. Just check *Move expired files to* and browse for the folder's location or enter its path in the string below.

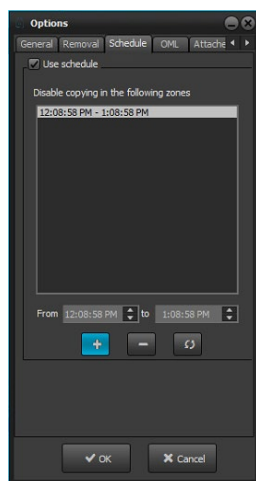
NOTE: The removal list that controls all removal/move operations is updated each hour or at clicking **OK** in the **Options** dialog. Therefore, deleting and moving files will start about one hour after their expiry!

SafeBox can remove files according to predefined removal lists in .csv file format. Put your *WIPE.CSV* removal files in a folder and browse for it in the *WIPE file directory* string.

IMPORTANT: If the file name here is different from *WIPE.CSV*, it will not be recognized by **SafeBox**.

At detecting such a file in the *WIPE* directory, **SafeBox** will check whether the files listed in it are used in non-expired playlists. If yes, the files will not be deleted. If not, **SafeBox** will delete them automatically.

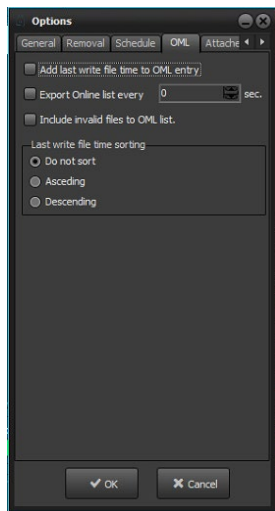
Schedule



You can control the time for file transfer according to your daily network traffic. This will help you to avoid network overloading. In the **Schedule** tab, define the time slots when **SafeBox** should not perform file transfers.



Do not forget to check the *Use schedule* box.



OML

SafeBox can export OML files. Thus, you will be able to export information about the media stored on selected directories into a file (OML file). The OML file format can be either *.txt or *.ply (the **AirBox** native playlist format). Thus, you can open the exported *.ply files directly in **ListBox** and build playlists via drag-n-dropping to another **ListBox** or directly to **AirBox**

OML Options page is designed for automated export of such online media library files.

It contains several settings:

- Add last write file time to OML entry* – when this box is ticked, **SafeBox** will add the *Date Modified* property of all files as a separate column in the OML file.
- Export Online list every [xx] sec.* – here you can specify the period for exporting OML information to a predefined file.
- Include invalid files to OML list* – checking this check-box allows including information for all media files into OML list, file information for all media files – valid or invalid

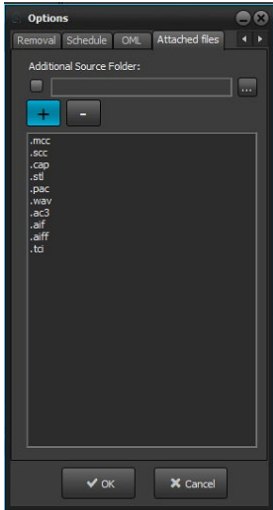
If you un-check this check-box, only valid media files will be listed into OML file.

Below, there are several sorting options:

- Do not sort* – no sorting will be applied to the OML file.
- Ascending* – the oldest files will appear on top of the list.
- Descending* – the latest files (with the most recent date modified) will appear on top of the list.



Attached files



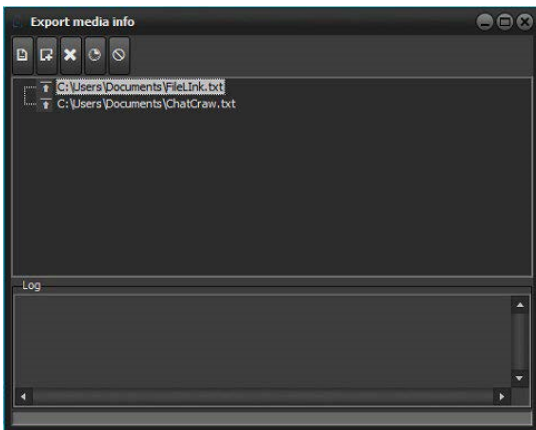
In some cases, there are files related to the video file, like *.wav files for example, which have to be copied to the destination location as well. You can add all such related files extension into Attached files tag.

Press the **ADD** button to enter the extension. Do not forget the dot symbol (.) before the extension.

So every time when **SafeBox** copies some file, it will search for the related files with the same name and extension like these from the list here and will copy them also.

EXPORT MEDIA INFO

Push the **Export media info** button in the main **SafeBox** window to configure the directories you would like to scan:



Click on the **Add New OML file** button and browse for it (or type a new name in the string below).

Select the OML file and **Add new folder** to be exported to it. Use this button to add directories to the list, and the **Delete** button if you want to remove the currently selected directory from it.

Right-click and select **Active** to enable/disable the lines you would like to include/exclude from the current scan.

Push the **Gear** button to check the selected directories and export the information to the specified file.

SafeBox User Manual



Beneath the *Destination locations* list you can view detailed information about the currently selected entry. Its path is displayed in the *Current location* string and below are listed all sub-directories contained in it.

There are three buttons to the right of the *Current location* string. To browse for a new destination location, use the first one. Push the second one to go one level up the current directory. The third button will erase all the content from the selected *Destination location*

Playbox Technology UK Ltd
Brookmans Park Teleport
Great North Road
Hatfield AL96NE
United Kingdom

www.playboxtechnology.com

support@playboxtechnology.com

All rights reserved copyright ©



www.playboxtechnology.com