

MAYBELL'S HOUSE INC.

501-C3 NON-PROFIT
CORPORATION



Executive Summary

Maybell's House Inc. is a nonprofit organization established to provide mentoring programs for youth, teenage parents, and young adults in the Ocala, Marion county, Florida area. Maybell's House Inc. will serve as a pillar to the community fostering youth economical education, homeless prevention, home stabilization, and youth diversion. The program will form partnerships with the juvenile court system, local shelters, and schools. Maybell's house goal is to foster a commitment to the young people in our community that promotes responsibility, possibility, self-stability, and economic sufficiency. We believe in fair opportunity in all areas of life. To achieve a fair position, equivalent knowledge must be acquired.

Maybell's House mission is to end the cycle of poverty-stricken families and homelessness amongst youth and young adults. We stand committed to assisting the community in achieving self-sufficiency and familial stability. The organization provides the community with familial strengthening initiatives geared towards building skills that are imperative to overcoming life's obstacles. Our programs will educate youth and young adults in four essential areas, financial wellness, family management, vital life skills, and lifestyle technology. We build trust and provide tools to successfully manage, maintain, and excel familial economical circumstance.

Through recent economic changes, repeated failures in navigating through life's obstacles, and lack of interest in conventional education, at-risk young people, now more than ever, feel hopeless. They have given up the possibility of success and purpose, we must reignite a sense of value within them. To accomplish this, we must equip young people with the skills and tools, in an environment that promotes self-worth and self-respect, and a safe space to build the skills needed to successfully navigate through life.

Maybell's House Inc. is an organization created in direct response to the growing number of young people that are either falling through the cracks at school or are already entangled with the juvenile court system. The growing number of young parents living in hotels and shelters. The goal of the program is to identify youth, teen parents, and young adults who are going to have a turbulent transition to adulthood and offer positive support system to avoid the pitfalls that can or have derail their lives. The focus is slightly different at each level, but the goal remains the same; educate, encourage, and support young people to make positive changes in his/her life.



Projections

Maybell's House has solid initiatives through multiple sources including fundraising efforts, fees for goods and services, individual contributions and gifts, bequest, corporate contributions, foundation grants, government grants and contracts, and membership fees and dues. We have a general break down of projected funding over the next year by quarter, we have a projected 7.5% increase over 5 years. Annual over heads will be a direct reinvestment in a community base for the organization, Ground Zero. Ground Zero will sphere head the community by serving as a much-needed transitional facility for the homeless. In addition to providing a vast majority of unconventional educational programs and life skills workshops, we are committed to providing a stable environment for success, something that every pre-teen, teen, and young adult should be afforded.

Projected Funding

	Private Donations	Public Donations	Fund Raising	In Kind Donations
1st	2,500	1,500	2,000	5,000
2nd	5,000	2,500	2,000	3,500
3rd	5,000	1,500	3,000	5,000
4th	2,500	1,500	5,000	2,500
Annual	15,000	7,000	12,000	16,000

First Year Donations revenue:

\$50,000

Projected Government Funding

	1 ST QUARTER	2 ND QUARTER	3 RD QUARTER	4 TH QUARTER
GOVERNMENT GRANTS	20,000	10,000	10,000	20,000
GOVERNMENT CONTRACTS	25,000	25,000	25,000	25,000
TOTAL	45,000	35,000	35,000	45,000

First Year Estimated Government Funds: **\$160,000**



Our Impact

We have Created an opportunity to provide a safe space to learn, grow, and become. Ground Zero will serve as a starting point for every man, woman, and child seeking support and assistance in achieving greater.

Our Services

To engage in our mission of ending poverty and homelessness amongst youth we have created 4 core outreach programs - Street Outreach, Personal Promoter, Housing Outreach, Diversion-Agency-Parental Outreach (DAP Outreach). We have constructed 4 pillars of support economical education, employment/assistance services, home stabilization, and youth diversion, to rebuild a sense of ability, stability, and community.

Street Outreach and Outreach by referral along with multiple fundraising efforts including our annual fundraiser Go Nutz for Charity™ kicked off in July 2020 when Maybell's House Inc. was established. Our goal is to maintain a 30 percent overhead in our first year. Using our overhead, in our second year we will purchase and develop "Ground Zero" a community learning center and transitional housing facility. This facility is necessary to spearhead our Housing Outreach program and DAP Outreach program.

MAYBELL'S HOUSE INC.



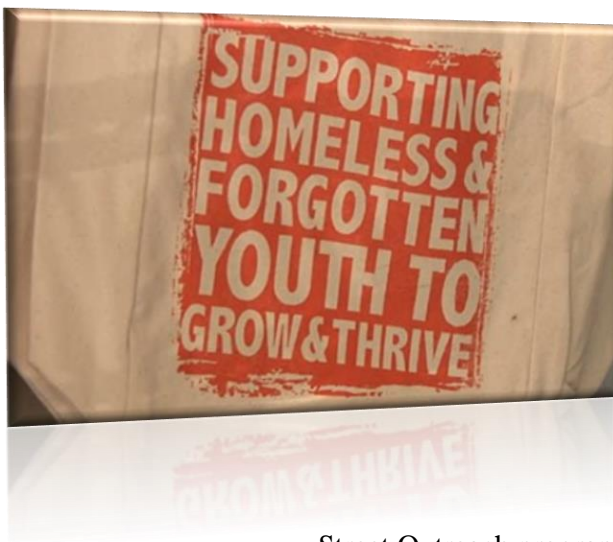
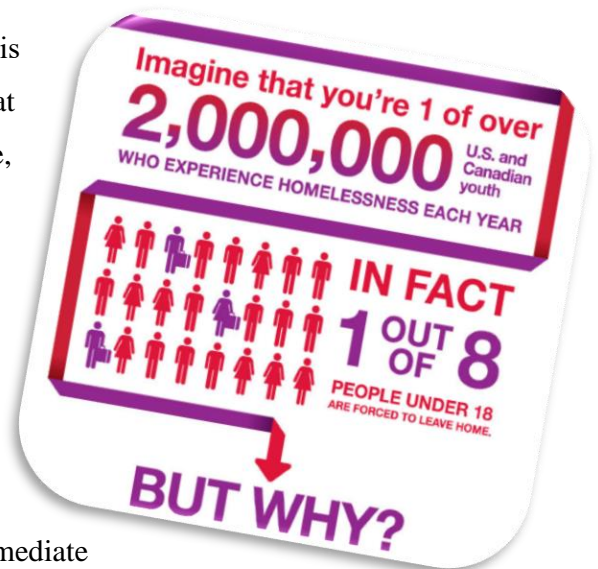
**GROUND
ZERO**
EST. 2021



Street Outreach

Our Street Outreach counselors and volunteers make routine visits to areas that have a high population of homelessness and homeless activity. Frequent visit to youth congregation spots allows us evaluate intervention and diversion needs amongst youth that may otherwise be considered “at-risk”. Street Outreach is such a success because our advocates show up consistently at the same days and times each week to provide food, hygiene, clothing, resource information, and referrals. The key to our success is initializing assistance in an environment that is most comfortable for the client. This allows our advocates to connect, engage, and gain trust with our clients in a more humane and personalized approach.

Street Outreach also invites a inside perspective where we can assess their needs and attempt to facilitate immediate intervention and reduce the probability of harm. The reality is some youth have lost hope, trust, and faith in most everything, especially their parents and the system. For this reason, we are



Street Outreach program.

faced with rejection for assistances, in most cases, by those that need it most. Street Outreach eliminates those fears with commitment to presence, genuine concern, and no expectations. Most homeless youth and young adults have never felt this type of genuine support and care, crippling them with fear and uncertainty. Breaking the barriers between assistance and fear of the unknown or even worse failed promises and uncertain expectations is the driving force in our



Personal Promoter

Our Promoter program is a mentorship program, each client is assigned to a Personal Promoter. Promoters will work directly with clients to help them navigate through the obstacles between them and their goals.

Weekly individual sessions, and monthly group sessions are key parts of our promoter program. Youth and young adults develop a goal, the promoter will begin by guiding them through a plan of action, helping them prioritize and execute their plan. Promoters act as guides, road maps, and accountability partners. Promoting is conducted in school, after school, and public meeting areas until the opening of “Ground Zero”. The goals of school-based mentoring are to increase high school graduation rates and foster a love for learning. We provide life and career counseling, computer access, and homework help. By planning for self-sufficiency, we promote exploration of vocational training, college, entrepreneurship, and gainful employment opportunities. Young adults ages 18 through 24, are provided with resources and support needed to overcome challenging situations. Promoters assist with educational support, resume and interview preparation, obtaining identification documents such as birth certificate and social security card, and developing life skills. Promoters set goals, give academic support, all the way through college preparation including applying to college, understanding FASFA, filling out FASFA, and applying for scholarships.



Housing Outreach

Locating and building enough trust to provide relocation assistance from the street into temporary housing facilities can take weeks, however, the task of securing permanent housing can take months. Our housing coordinators serve as a liaison between the client and community resources such as income-based housing, section 8 housing, and first-time homebuyers' resources. Our commitment goes beyond securing housing, we maintain in close contact, including but not limited to;

- Assistance in locating and taking care of an apartment
- Life skills training, including the fundamentals of living alone and supporting one's self
- Developing a follow-up plan after being placed in an independent living situation
- Weekly food baskets
- Clothes
- Furniture
- Counseling and moral support
- Referrals for medical and dental support
- Housing *Allowance*



DAP Outreach

Diversion-Agency-Parental Outreach at Maybell's House Inc. ensures that services available to all that seek assistance on behalf of themselves, young adults, or a minor child to whom one has direct authority of.

Diversion is most often recommended by teachers, coaches, and school counselors. Diversion allows the child an opportunity to meet with a promoter and "*get back on track*", for students with minor disciplinary issues, poor attendance, and academic shortfalls. Typically, diversion is used in leu of truancy reporting or the last opportunity before more serious consequences are implemented.

Agency Outreach is court mandate to meet with a promoter and develop a success plan to re-direct a child that may be on a path of committing serious criminal offenses.

Parental Outreach occurs when a parent has reached out to Maybell's House Inc. this can be caused by a change in the family such as divorce or separation that may be affecting the child negatively and the parent and child need a mediator to discuss private issues.

Maybell's House Inc. is committed to fostering the success and education of all youth and believe by bringing children together from all experiences of life will not only broaden our views of one another but also develop a sense of community, humility, and empathy in ourselves and one another.



Operations

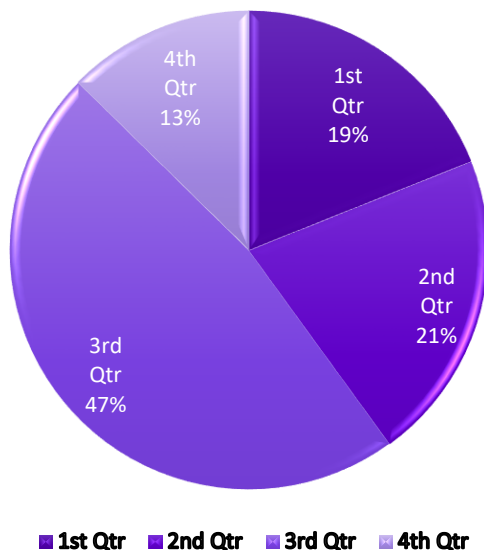
Maybell's House believes in minimal operation expense. We don't believe it takes a large budget instead at its core our organization relies on the support of our community and those we impact.

Maybell's House does not require payment for services or assistance. However, we encourage those that achieve stabilization through our service, to come back and volunteer or provide testimony.

Projected Expenses

EXPENSES	1 st QUARTER	2 nd QUARTER	3 rd QUARTER	4 th QUARTER	Annual
Operations	14,400	14,000	24,400	24,800	77,600
Administration	2,500	1,500	2,000	2,000	8,000
Fixed	2,800	3,000	6,000	10,000	21,800
Flexible	500	500	3,000	6,000	10,000
TOTAL	20,200	19,000	35,400	42,800	\$117,400

Expenses



It is our commitment to maintain an annual net expense average of thirty percent or less. To ensure every dollar donated goes directly towards our cause we offset our expenses with in-kind donations, volunteers, and annual fundraisers/charity events. We utilize our resources to maximize our potential proceeds which in turn allows us to provide expedited services to those that need it most!



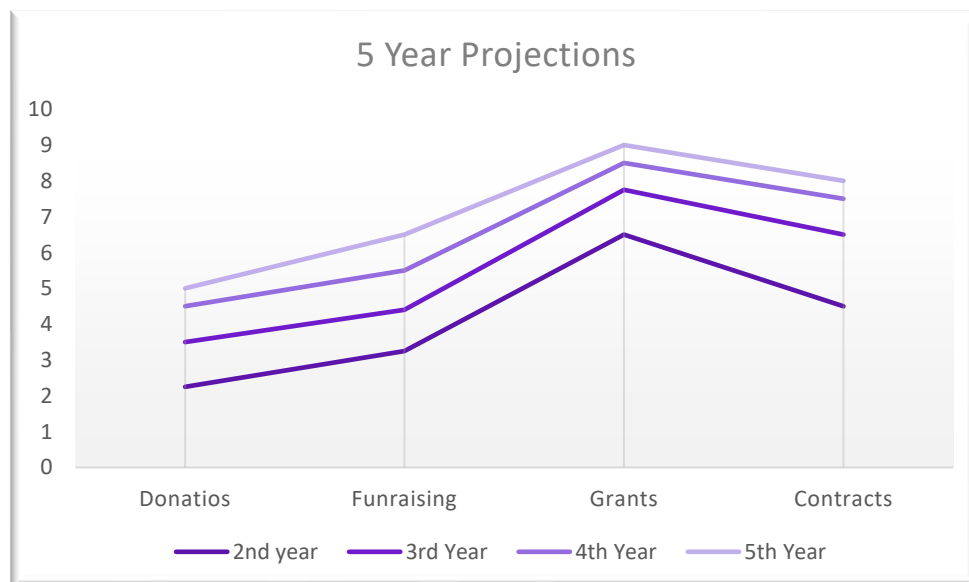
Our Future

Our solid plan offers an 30% over head which will allow, in time, securement of funding for a facility that would serve as temporary transitional housing unit for homeless and high risk of becoming homeless families, runaway youth, and teen parents. This will also serve as a learning facility that will be an invaluable resource teaching children and young families the importance of creating a stable environment, financial responsibility, and planning. Maybell's House will not only work to re-stabilize the living situation of the family but also promotes by demonstration of healthy budgeting, healthy home operation, and financial discipline. By way of an extremely disciplined budget and our dedication to lifting a community of people to their highest and greatest potential.

Projected Over Head

	1 ST QUARTER	2 ND QUARTER	3 RD QUARTER	4 TH QUARTER
DONATIONS	56,000	48,000	39,500	56,500
EXPENSES	20,200	19,000	35,400	42,800
OVER HEAD	35,800	29,000	4,100	13,700
PERCENTAGE	64%	60%	10.4%	24%

Annual Overhead Percentage: **39.6%**



Who We Serve

Each year an estimated 1.3 million youth experience homelessness in the United States. Florida Homeless Census reported over 8,000 unaccompanied youth in 2018. Over 77% of our population lives in double household homes, meaning the home and financial responsibility and upkeep of the home are maintained by two (2) or more families.

In 2020 children are being displaced from their homes at an alarming rate. Youth and young adults are experiencing homelessness due to conflict, abuse, and in some cases neglect. Homeless youth can be short-term, some may be homeless for months or even years, others have no intention, desire, or even refuse to return home.

In Marion county 11% of our population are living in conditions considered unsheltered, such as, cars, parks, campgrounds, temporary trailer, or even abandon homes/buildings. Maybell's House Inc. Ground Zero facility is in direct response to the alarming rate that children are becoming displaced, in addition to the growing violence in our communities amongst our youth.

The harsh reality is homeless youth are exposed to multiple conditions and situations that they are not equipped to manage. Each story is unique, the common factors are consistent, lack of guidance, hope, and access to proper care.

We understand they are scared, hurt, and untrusting of people and the system in general. We listen, connect, and encourage.



Values

Integrity- We operate honestly and fairly as a unified construction that is consistent and concise.

Kindness- We extend friendly courteous assistance to all that seek refuge.

Forgiveness- We will help you work toward your future, not seek out your past.

Humility- We will humbly accept the opportunity to help all that shall seek assistance.

Economy- We strive to create economic pathways for those who have been denied the proper tools to forage a way themselves.

Excellence- We believe the power and brilliance integrated in any establishment is a direct reflection of the excellent people it serves.

Service- We are committed to establishing a sincere connection with the communities we serve with transparency and dignity.

Accountability- We will utilize every resource we have to assist individuals and families in need, if we are unable to help you circumstance, we will provide alternative resources.

Respect- We mandate that all interactions are conducted in a mutually respectable manor.

Punctuality- We are considerate of your time and will fulfill all commitments punctually and expect the same from our clients.

Education – success in any venture relies on the ability to know better, so you can do better, so you can be better.

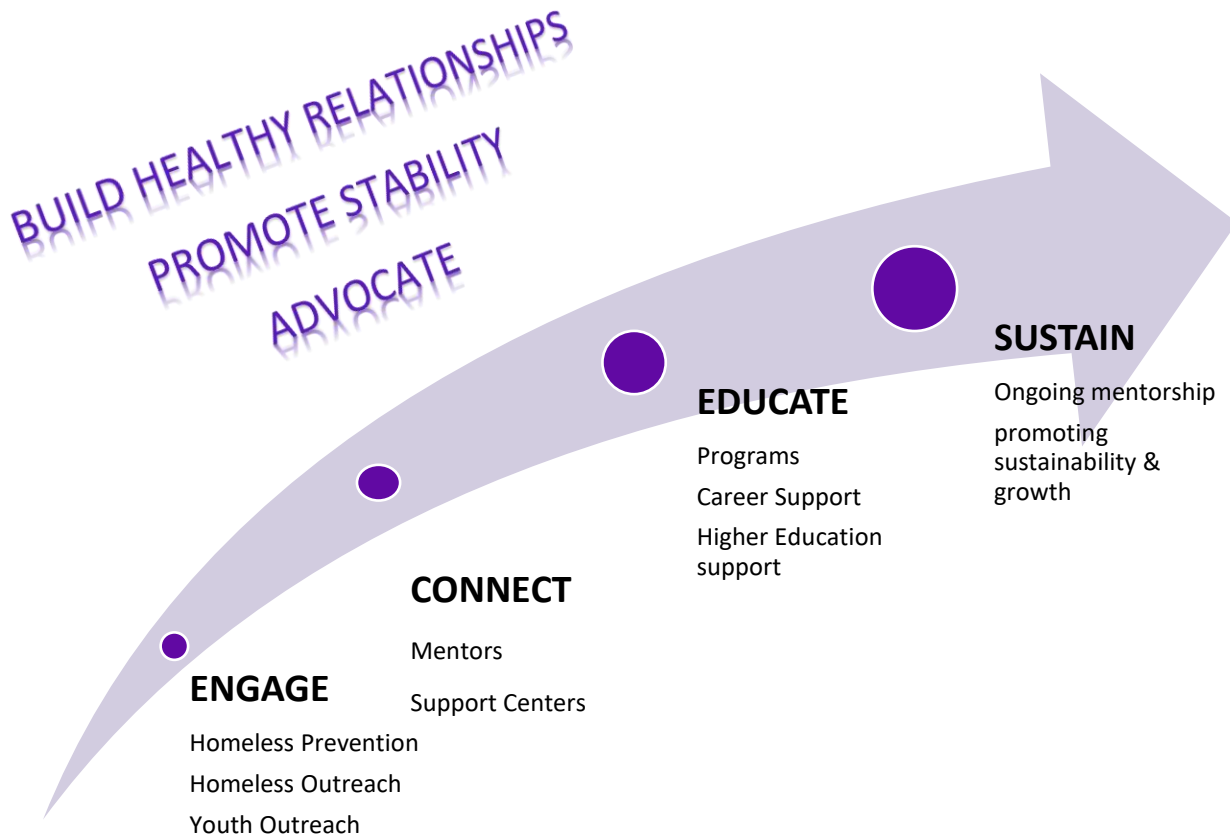
Training –trade and skills development is the door to new opportunity.



Mission Statement: We believe that there is no place like home No child should be homeless no matter how old. Every child needs familial stability, all parents need and deserve community support, and every community needs a Ground Zero Program.

Ground Zero - Maybell's House Inc. vision for success

“Know better, so you can do better, so you can be better”



Vision

Maybell's House Inc. believes that all families should have an opportunity to achieve economic stability. We foster education and are committed to providing classes that are unconventional to public or private education. Our classes provide core life skills, skills that are mandatory to obtain economic self-sufficiency. We pride our self on hard work, education, and community effort.



The Power of Your Dollar



74¢
Directly Supports
Youth

16¢
Fundraising
Initiatives

10¢
Administrative
Support



How You Can Help

Your generous support is needed! Corporate sponsors, private contributors, memorial donations, legacy gifts, recurring donations, tax deductible donation, and in-kind donations.

Donor advised funds and capitol campaign partnership contributes to the success of our long-term goals, expanding our overhead, equates increased year-over-year contact with youth, and overall lives impacted.

Making a Difference

“Empowering homeless youth is truly the most rewarding gift that one could give. Corroborating with youth and young adults to progress from homelessness, hopelessness, and viewing life as meaningless to stable, hopeful, and prosperous, initiates transformation for generations. The impact that creates in our community and in the world is immeasurable”

Maybell’s House Inc.

