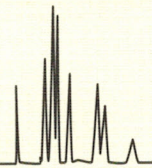




Experiment Station Chemical Laboratories



Analytical Services

Room 4 Agricultural Building

Columbia, Missouri 65211

Sender: Jerry O'Rear
Address: MOJO Seed Enterprises, LLLP
P.O. Box 1716, Hereford, TX 79045
Phone: 806-445-6442
Purchase Order #: Invoice

Date Received: January 23, 2019

Date of Report : February 4, 2019

Description: Sorghum

Page 1 of 1

ESCL #	647	648	649	650
Units	W/W%	W/W%	W/W%	W/W%
MSE ID	Sample 1	Sample 2	Sample 3	Sample 4
Taurine §	0.29	0.30	0.30	0.28
Hydroxyproline	0.01	0.01	0.01	0.01
Aspartic Acid	0.90	0.72	1.05	1.00
Threonine	0.43	0.36	0.48	0.45
Serine	0.56	0.45	0.61	0.56
Glutamic Acid	2.99	2.36	3.50	3.11
Proline	1.12	0.92	1.36	1.20
Lanthionine §	0.00	0.00	0.00	0.00
Glycine	0.40	0.34	0.43	0.40
Alanine	1.31	1.04	1.50	1.35
Cysteine	0.25	0.20	0.29	0.24
Valine	0.67	0.56	0.78	0.72
Methionine	0.24	0.18	0.23	0.19
Isoleucine	0.59	0.49	0.69	0.63
Leucine	1.93	1.52	2.26	2.03
Tyrosine	0.39	0.34	0.43	0.43
Phenylalanine	0.78	0.63	0.90	0.80
Hydroxylysine	0.03	0.02	0.02	0.02
Ornithine §	0.00	0.00	0.00	0.00
Lysine	0.28	0.26	0.30	0.32
Histidine	0.31	0.25	0.35	0.31
Arginine	0.47	0.39	0.52	0.51
Tryptophan	0.09	0.08	0.10	0.10
Total	14.04	11.42	16.11	14.66
Crude Protein*	13.67	11.17	15.57	14.38
Moisture	13.13	16.96	14.86	13.36
Crude Fat		3.35	3.31	2.98

Sample 4 = OPAL

W/W%= grams per 100 grams of sample. Crude Protein*= %N x6.25. § Non-proteinogenic amino acids.
Results are expressed on a dry weight basis.