



What is "County Government" Anyway?

- **A local unit of government**
 - **Sets county-level legislation** (ordinances/resolutions)
 - **Works along with towns, villages, cities**
- **Administrative arm of the State of Wisconsin**
 - **Acting upon state statutes**
- **Service providers and resources**

What does "County Government" Do ?



Public Health
Prevent. Promote. Protect.

**Winnebago County
Health Department**

HEALTH & HUMAN SERVICES

County Social/Human Services Departments

County social/human services departments provide an array of services, ranging from serving young children in the Birth to Three program to the aging population in the adult protective services system.

Public Health

Local public health departments work on a daily basis to promote and protect the health of all citizens.

County Nursing Home

provide 24/7 skilled nursing care with an emphasis on serving residents with special care and/or behavioral needs.

Aging

The federal Older Americans Act, along with the Wisconsin Elders Act, direct how aging services in Wisconsin are provided. In addition to county aging units, many counties also operate Aging and Disability Resource Centers.

Child Support

County child support agencies administer the state's child support program. Services provided include establishment of paternity, establishment and enforcement of court-ordered child support and medical support obligations, establishment and enforcement of support orders when children are placed out of the home

What does "County Government" Do ?



PUBLIC SAFETY SERVICES

Coroner

Services include death investigations, medicolegal autopsies, and signing death certificates and cremation permits.

Emergency Management

County emergency management is responsible for developing and implementing an emergency response plan that is consistent with the Wisconsin Emergency Response Plan. This department also establishes, maintains, and operates the county's Emergency Operations Center.

Public Safety Answering Points (PSAP)

PSAPs are responsible for all 911 calls and affiliated activities including dispatching police, fire, and EMS services.

Sheriff

The sheriff is an elected constitutional officer whose responsibilities include:

- Maintaining and operating the county jail
- Attending upon the courts
- Enforcing all state and local laws



What does "County Government" Do ?

REGISTER OF DEEDS

The register of deeds is an elected constitutional officer whose responsibilities include examining, recording, indexing, archiving, and maintaining all instrument authorized by law and returning them as designated maintaining vital records and issuing certified copies.

COUNTY CLERK

The county clerk is an elected constitutional officer whose responsibilities include election administration, county finances, issuance of licenses and permits, and county board administrative functions.

TREASURER

The county treasurer is an elected constitutional officer whose responsibilities include cash management, Administering and collecting property taxes, forwarding fees, fines, and forfeitures to the appropriate government agencies.

CIRCUIT COURTS

Clerk of Circuit Court

Collection of court-related fees and fines, administration of the court and its records, as well as management of juries.

Circuit Court Commissioner

Performs a number of judicial duties including initial appearances, small claims, preliminary and certain juvenile hearings, as well as probate, guardianship, and mental commitment proceedings.

District Attorney (DA)

Technically not a county employee, counties fund the DA's office. The DA is responsible for prosecuting all criminal cases and providing crime victim and witness services.

Family Court Services

Conducts court hearings and renders decisions on many issues in family court cases.

Register in Probate

Custodian of the record and court administration for the following case types: probate, guardianship, mental commitment, and adoption.



What does "County Government" Do ?

WITTMAN REGIONAL AIRPORT & OSHKOSH AVIATION BUSINESS PARK

Although the northern portion of Wittman Regional Airport physically resides within the City of Oshkosh Wisconsin, the airport itself is managed by Winnebago County, the seat of government in the area. Through the leadership of County Board Chairman, County Executive, and the Airport Director, Wittman is professionally managed to provide maximum benefit to the county and region.

PUBLIC WORKS

Highway maintenance and repair of county roads and bridges. Maintain and repair state and interstate roads through contract with the Wisconsin Department of Transportation.

VETERANS SERVICES

The primary contact for veterans and their families within the county. CVSOs advise U.S. veterans on any benefits to which they may be entitled. CVSOs also assist veterans with any complaint or problem arising out of such military service and provide veterans and their dependents all possible assistance.

LAND SERVICES

Forestry & Land Conservation

Own and manage public forest lands as well as primary local delivery system of natural resource programs.

Planning & Surveyor

Land Information, Planning, Zoning Preparation and adoption of a county development plan, including general zoning, shoreland zoning, floodplain zoning, and land-use planning.

Sanitation/Solid Waste/Recycling

Conduct solid waste management planning, including operating county landfills, providing waste/recycling collection services, and providing collection and proper disposal of household hazardous waste.

EDUCATION & HOUSING

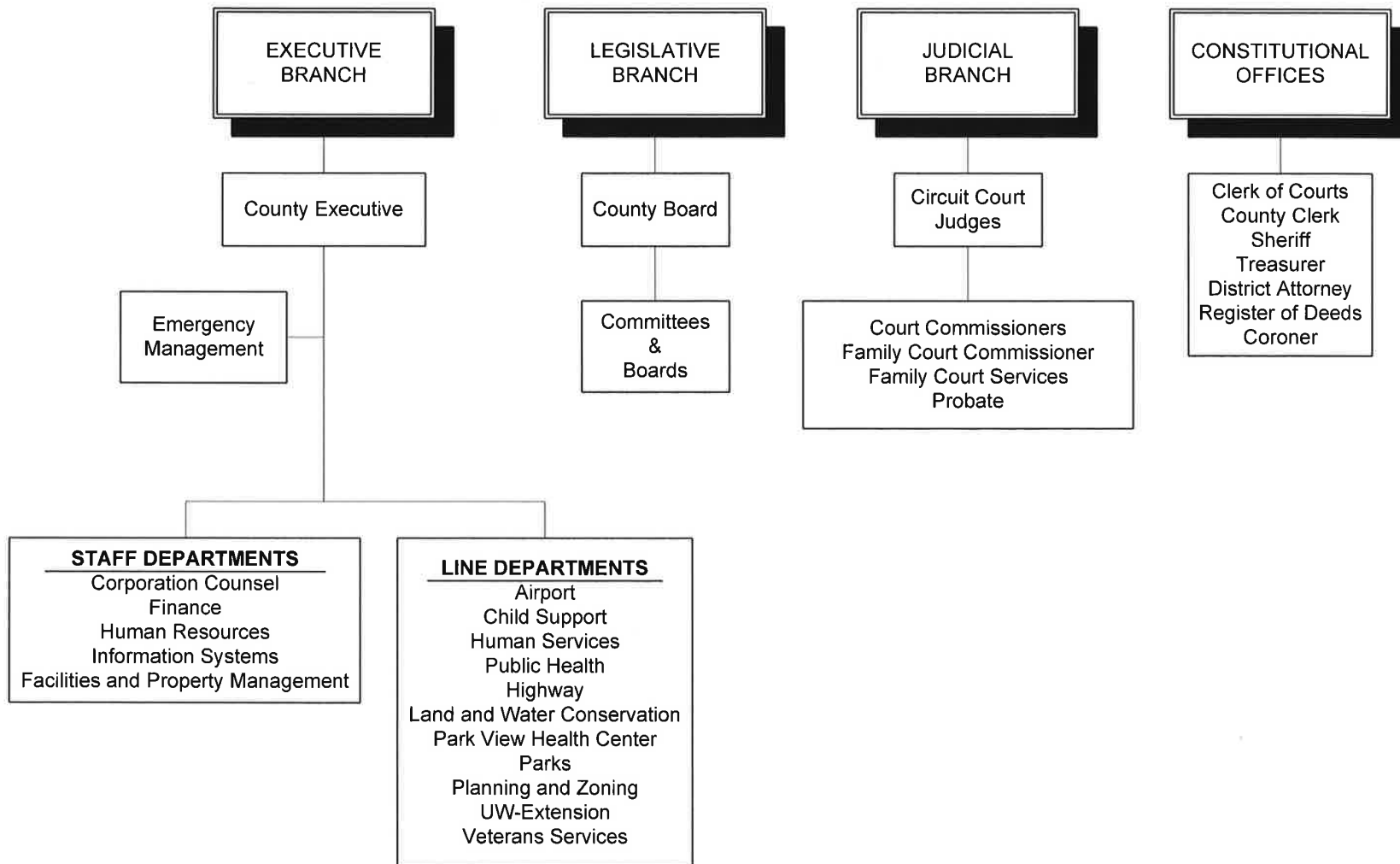
Additional services including libraries, beaches, campgrounds, economic development, regional planning, fairs and exhibits, historical societies and museums, parks, public housing, recreation facilities and trails.



What is County Board of Supervisors?

- County board of supervisors: 36 Districts
 - “Legislative” arm of the county
 - Serve two-year terms
 - Elected in even-numbered years
 - All are elected in the same year (not staggered)
- County board chair (elected by the board membership)
 - Manager/manages County Board of Supervisors
 - Sets the agenda
 - Makes appointments (recommendations) and sets committees
- County Budget (all county departments)
- Oversight committees and special boards and committees
- Board and committee meetings **are** open to the public

WINNEBAGO COUNTY



COUNTY BOARD COMMITTEES AND BOARDS OF JURISDICTION

