



 elica
aria nuova

COLLECTION



LUXURIOUS
ITALIAN
DESIGN & PERFORMANCE
FOR TODAY'S KITCHEN



WALL-MOUNT

70CC	05
Horizonte	06
Mini Om	07
Om	08
Space	09

ISLAND

Grace	11
Juliette	12
Ola	13
Platinum	14
Star	15
Twin	16
Victoria	17
Wave	18
Horizonte Island	19
Chrome	20

SPECIAL FEATURES	23
-------------------------	----

ACCESSORIES	21
--------------------	----

WALL-MOUNT

PICTURESQUE HIGH PERFORMANCE

70CC

Design Fabrizio Crisà



WALL-MOUNT

Dimensions

27 1/2"W x 18 7/8"D x 13 3/4"H

Models

EEV428RD 70CC 28" Red

Special features



PERIMETER ASPIRATION



LED lamps



electronic rotating disc controls



perimeter aspiration with anodized aluminum mesh filter



Fluid and Infinite, 70cc is the intersection of two "C" shaped shells, one colored glass external aesthetic that joins another, that is stainless and functional.

A modern and unique artistic form that is sure to dazzle and spark conversation. More than a pretty face, 70cc will extract fumes and capture grease from 3 sides (not just the bottom) and Perimeter Ventilation Technology is built in, that increases suction 35% for added ventilating efficiency.

The energy wise LED lighting and 450 CFM blower are operated by a stainless steel circular touch control that is conveniently positioned for easy access.



WALL-MOUNT

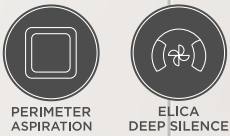
Dimensions

35 7/16" W x 19 5/8" D x 2 3/8" H

Models

EHR636SS Horizonte 36" Stainless

Special features



halogen lamps



electronic touch controls



perimeter aspiration plate & EDS anodized aluminum mesh filter



Horizonte blends an ultra thin body (only 2" tall) with glass and stainless steel to perfectly compliment the clean, architectural lines of today's modern kitchens. Horizonte features a powerful 600 CFM internal blower, combined with Elica's perimeter aspiration technology, which increases suction efficiency and allows you to operate the blower at lower speeds without sacrificing performance.

Cook up a storm and socialize without raising your voice, with Elica's patented Deep Silence System, which reduces sound levels at all speeds by over 50%. Futuristic electronic touch controls operate the 4-speed blower and halogen lighting, which elegantly fade out of sight when not used.



WALL-MOUNT

Dimensions

21 5/8" W x 13 1/16" D x 20 1/4" H

Models

EMI422BL Mini Om 22" Black Glass
EMI422WT Mini Om 22" White Glass

Special features



halogen lamps



electronic push button controls



perimeter aspiration plate & aluminum mesh filter



Mini Om, the smaller version of Om, represents the same exciting synthesis of design, art and technology, but with the added advantage that, even if space is at a premium, you don't have to limit the scope of your creativity.

Mini Om features a 450 CFM blower that is complimented with perimeter aspiration technology which draws air through a narrowed channel around the circular face plate. The engineered airflow significantly increases suction, without increasing blower speed or energy consumption.

Mounted on the side and out-of-sight, electronic push button controls operate lighting and the 3-speed, 450 CFM blower. Mini Om is whisper quiet with only .3 sones at speed 1.



WALL-MOUNT


Dimensions

31 1/2"W x 17 5/8"D x 33 7/8"H

Models

EOM431BL Om 31" Black Glass
EOM431WH Om 31" White Glass

Special features


PERIMETER ASPIRATION



WALL-MOUNT


Dimensions

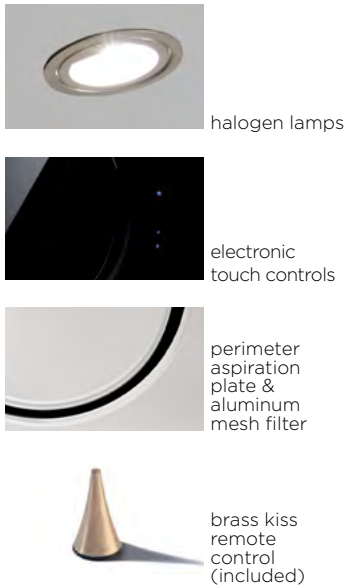
30 3/4"W x 15 1/2"D x 31 3/8"H

Models

ESP630BL Space 31" Black Glass
ESP630WT Space 31" White Glass

Special features


ELICA DEEP SILENCE



Om features an almost vertical glass surface, completely flat and smooth. A square containing a circle: virtually an abstract painting, only hinting at its real function. Glass is the predominant material, with nearly invisible controls located beneath the glass that require only the lightest touch to illuminate and operate the various aspects of the hood. Halogen Lighting is contained in a slim profile of reflective stainless steel placed at the top of the large square. This mirror-like quality helps transform Om into a real light source, creating a fascinating atmosphere in the kitchen.

Om's 450 CFM blower is complimented with Perimeter Aspiration technology which draws air through a narrowed channel around the circular face plate. The engineered airflow significantly increases suction, without increasing blower speed or energy consumption.



The circle, a symbol of the absolute and infinity. A movement that leaves and returns to its origin and depicts the shape of time itself. The vertical design and mirror like reflective qualities of the glass make a bold statement.

Space with the EDS3 (Elica Deep Silence) technology, bring the golden pleasure of silence. With only 4.8 sones at top speed, the kitchen is truly a peaceful place to pass the time in perfect silence. The powerful 600 CFM blower and halogen lighting are operated by electronic touch controls which are discretely positioned to the side and out-of-sight.



ISLAND

CAPTIVATING
HIGH DESIGN

ISLAND

Dimensions

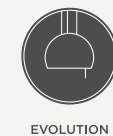
20 1/8"W x 20 1/8"D x 14 1/4"H

Models

EGR320BL
EGR320WH

Grace 20" Black Glass
Grace 20" White Glass

Special features



EVOLUTION



AMBIENT
LIGHT



halogen and incandescent lamps



magic wand controls



aluminum mesh and long life carbon filters



Like a cinema star, Grace shines with its own special radiance. It's beauty, function and design are a real source of light you can't take your eyes off.

Grace doesn't give up all her secrets at first glance...because behind the semi translucent opulent glass exterior is a highly efficient range hood. All possible due to Elica's patented Evolution system.

Grace offers a 300 CFM blower, halogen flood lamp, elegant ambient lighting and a high efficiency filter system that effectively removes cooking grease, heat, smoke and odors, with only a whisper of sound (.3 sones at speed 1) and does all this without dominating the kitchen or obstructing the glorious views outside.



ISLAND

Dimensions

35 3/8"W x 19 5/8"D x 17"H

Models

EJL336PL Juliette 36" Pearl

Special features



ECOLUTION

AMBIENT LIGHT



halogen and incandescent lamps



electronic push button controls



anodized aluminum mesh
& long life carbon filters



Juliette is characterized by gentle oval curves and soft pearl coloring, all lending toward a more leisurely pace and style. A beautifully cut floral design and flowing ambient light, bring to life the scenery, vibrant scents and romantic interludes of the French countryside. A masterfully crafted symbol that embodies a taste of the good life. Surprisingly, underneath the calming floral shell exterior is a highly efficient range hood. All possible due to Elica's Ecolution system.

Think Outside the Kitchen and consider Juliette for an "Air Cleansing" role in other rooms of the home, such as a smoky billiard room or den.

Dimensions

20"W x 20"D x 20 1/2"H

Models

EOL320RD Ola Bright 20" Red

Special features



ECOLUTION



halogen lamps



electronic push button controls



anodized aluminum mesh
& long life carbon filters



ISLAND



Bring a bold splash of color and glamour to your kitchen with Elica's Ola. Ola delivers all the aesthetic appeal of a sophisticated pendant light, plus the functional performance that you expect from a range hood. Ola's soft lines and shining stainless steel exterior, echo the sinuous movement of a wave, and is contrasted by the warmly shaded red interior. All possible due to Elica's Ecolution system.

Ola offers a 350 CFM blower, halogen lighting and a high efficiency filter system that effectively removes cooking grease, heat, smoke and odours, with only a whisper of sound (.3 sones at speed 1) and does all this without dominating the kitchen or obstructing the glorious views outside.



ISLAND

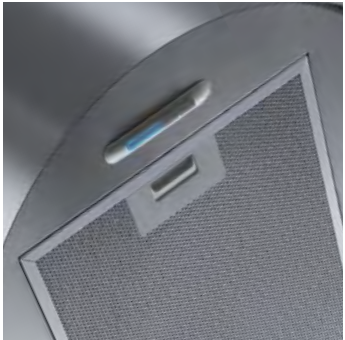
Dimensions
19 3/8"W x 19 3/8"D x 15 3/8" H

Models
EPL320SS Platinum 20" Stainless

Special features



ECOLUTION



anodized aluminum mesh & long life carbon filters plus and electronic push button controls



halogen lamps



Platinum's brilliantly glossy finish reflects the world around it like a kaleidoscope, and provides a powerful visual impact, while the modern, clean-lined definition makes it easily adaptable to a variety of styles and environments. Many are misled by Platinum's pendent light appearance and are pleased to find its decorative qualities are equally balanced by a high functioning range hood hidden within. All possible due to Elica's Ecolution system.

Platinum offers a 350 CFM blower, halogen lighting and a high efficiency filter system that effectively removes cooking grease, heat, smoke and odours, with only a whisper of sound (.3 sones at speed 1) and does all this without dominating the kitchen or obstructing the glorious views outside.

Dimensions
18 5/16"W x 18 5/16"D x 13 1/2"H

Models
EST319GL Star 19" Glass

Special features



EVOLUTION



AMBIENT LIGHT



halogen and incandescent lamps plus magic wand control



anodized aluminum mesh and long life carbon filter



Star is the brightest hood in Elica's glittering constellation of range hoods. The spherical shape is dressed with hundreds of tiny cascading glass prisms, which softly reflect light and elegantly illuminate any room.

The compact size and sophisticated styling adds casual brilliance and the right touch of Decoration, without overpowering the kitchen or obstructing views to the outside. All possible due to Elica's patented Evolution system.

Above all, Star ventilates the kitchen with a 300 CFM blower that effectively removes cooking grease, heat, smoke and odours, with only a whisper of sound (.3 sones at speed 1).

ISLAND



ISLAND

Dimensions

35 7/16" W x 19 11/16" D x 14 3/16" H

Models

ETW536SS Twin 36" Stainless

Special features



EVOLUTION



AMBIENT LIGHT



halogen and incandescent lamps



magic wand controls



anodized aluminum mesh and long life carbon filters



Twin's brilliantly glossy finish reflects the world around it like a kaleidoscope, and provides a powerful visual impact, while the modern, clean-lined definition makes it easily adaptable to a variety of styles and environments.

Many are misled by Twin's pendent light appearance and are pleased to find its decorative qualities are equally balanced by a high functioning range hood hidden within. All possible due to Elica's patented Evolution system.

Think Outside the Kitchen and consider Twin for an "Air Cleansing" role in other rooms of the home, such as a smoky billiard room or den.



ISLAND

Dimensions

20" W x 20" D x 14 1/6" H

Models

EVC320SS Victoria 20" Stainless + Glass

Special features



EVOLUTION



AMBIENT LIGHT



halogen and incandescent lamps



magic wand controls



anodized aluminum mesh and long life carbon filters



Victoria, with the timeless elegance of a monarchy, shimmering grace and sparkling gems draw the eye. A marriage of two kinds of light and reflection, create a royal bond and form a stately centerpiece for all to admire and enjoy.

Beneath the glamorous stainless steel and glass crystal exterior is a highly efficient range hood. All possible due to Elica's patented Evolution system.

Victoria offers a 300 CFM blower, halogen flood lamp, elegant ambient lighting and a high efficiency filter system that effectively removes cooking grease, heat, smoke and odours, with only a whisper of sound (.3 sones at speed 1) and does all this without dominating the kitchen or obstructing the glorious views outside.



ISLAND

Dimensions

19 3/4" W x 19 3/4" D x 16 7/8" H

Models

EWV320SS Wave 20" Stainless

Special features



ECOLUTION



AMBIENT LIGHT

Dimensions

47 1/4" W x 27 1/2" D x 2 3/8" H

Models

EHI648SS Horizonte Island 48" Stainless

Special features



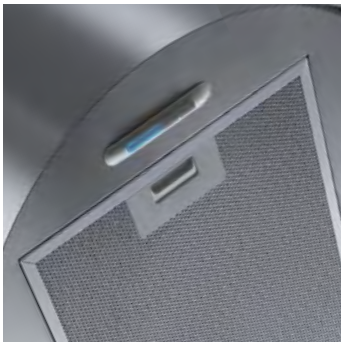
PERIMETER ASPIRATION



ELICA DEEP SILENCE



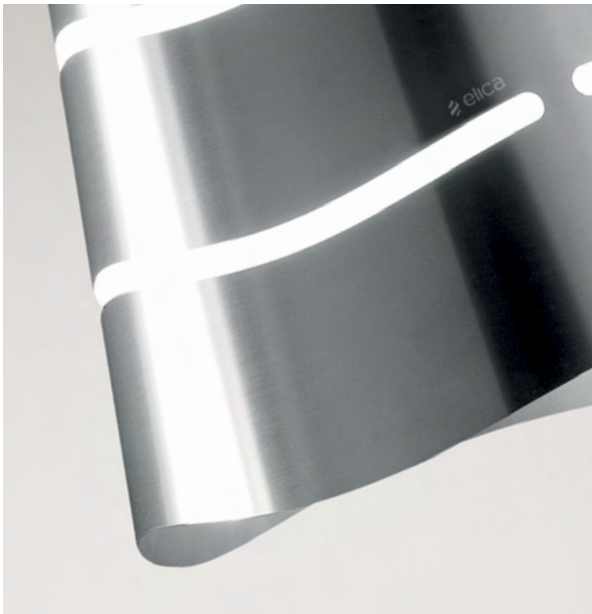
WALL-MOUNT



anodized aluminum mesh & long life carbon filters plus and electronic push button controls

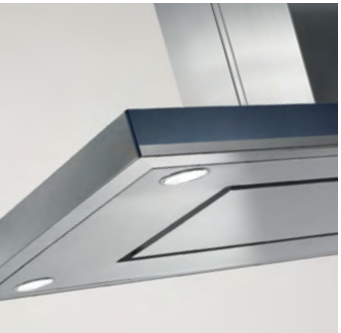


halogen lamps



Wave filters light, gently through undulating spaces cut into a stainless steel surface; a minimalist style light source, with a simple shape enriched by high-quality materials and a subtle radiance. Much more than a stylish stainless light fixture, Wave is actually a highly efficient range hood. All possible due to Elica's Ecolution system.

Wave offers a 350 CFM blower, halogen lighting and a high efficiency filter system that effectively removes cooking grease, heat, smoke and odours, with only a whisper of sound (.3 sones at speed 1) and does all this without dominating the kitchen or obstructing the glorious views outside.



halogen lamps plus perimeter aspiration plate with EDS anodized aluminum mesh filter

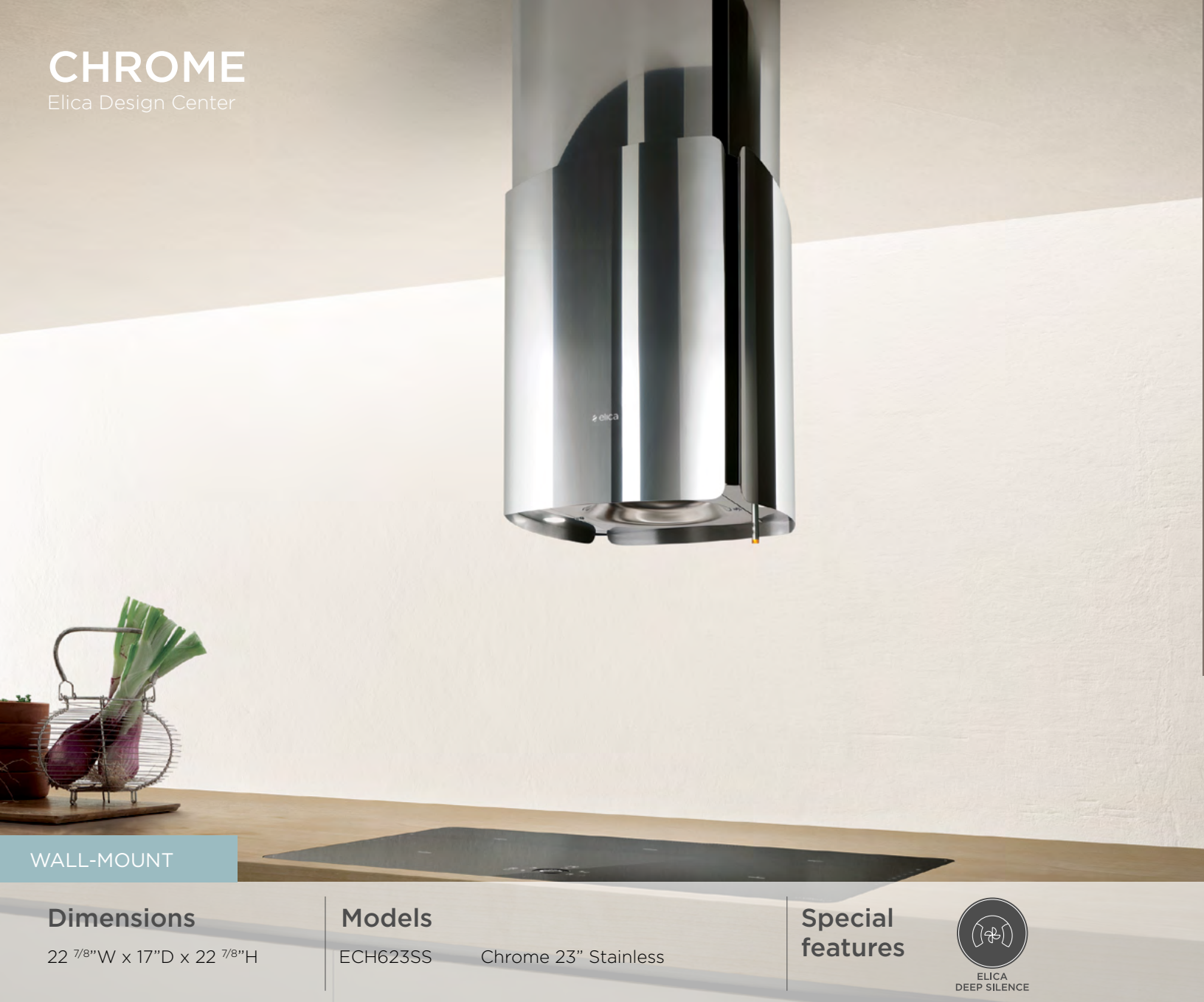


electronic touch controls



Horizonte Island blends an ultra thin body (only 2" tall) with glass and stainless steel to perfectly compliment the clean, architectural lines of today's modern kitchens. Horizonte features a powerful 600 CFM internal blower, combined with Elica's perimeter aspiration technology, which increases suction efficiency and allows you to operate the blower at lower speeds without sacrificing performance.

Cook up a storm and socialize without raising your voice, with Elica's patented Deep Silence System, which reduces sound levels at all speeds by over 50%. Futuristic electronic glass touch controls operate the 4-speed blower and halogen lighting, which elegantly faded out of sight when not used.



WALL-MOUNT

Dimensions

22 7/8" W x 17" D x 22 7/8" H

Models

ECH623SS Chrome 23" Stainless

Special features



halogen lamps



magic wand controls



EDS anodized aluminum mesh filter



An island hood with an elegant vertical style, Chrome's design is simple yet sophisticated, with four separate panels of polished stainless steel, forming the sides of the chimney, which convey strength and timeless grace.

Chrome with the EDS3 (Elica Deep Silence) technology, delivers the golden pleasures of silence. With only 4.8 sones at top speed, the kitchen is truly a peaceful place to pass the time...in perfect silence.

The powerful 600 CFM blower and halogen lighting are operated by a touch sensitive steel rod control, aptly named the Magic Wand. A gentle touch of the finger to the rod is all it takes, or operate from anywhere in the room with the beautifully crafted Jet black remote control.

ACCESSORIES

EXTENSION OF USABILITY

CHIMNEY EXTENSION

EMICEK12	Mini Om (Short Extension)
EMICEK13	Mini Om (Long Extension)
EOMCEK15	Om (Short Extension)
EOMCEK16	Om (Long Extension)
ESPCEK14	Space
KIT0038774	70CC (Duct Out Chimney Kit)
KIT0038778	70CC (Back Duct Kit)

EXTENSION CABLES

EXXEKSS	Grace, Juliette, Ola, Platinum, Star, Twin, Victoria, Wave (High Ceiling Extension Cables - Reaches 23'5")
---------	---

RECIRCULATING KITS

EOMRCK11	Om
KIT01916/S	Chrome, Horizonte, Horizonte Island, Space

REMOTE CONTROL KITS

EXXRCDBL	Chrome, Grace, Star, Twin, Victoria (Remote Control)
----------	--

WALL-MOUNTING BRACKET

EXXWBK01	Grace
EXXWBK02	Ola, Platinum, Wave



SPECIAL FEATURES & CERTIFICATIONS

Extensive experience in the sector, attention to detail, refined materials, and cutting-edge technologies: these elements have always set Elica apart on the market and have allowed the brand to revolutionize the traditional concept of kitchen hoods, turning them into unique pieces that can ensure health and wellness in the home.



Elica Lab Certified:

The mission of ELC is to serve consumers by assuring safety and reliability, plus verifying the achievement of published performance ratings for all products and components developed as part of the range hood.

ELC products have undergone a rigorous testing process where product safety are measured against the strictest quality regulations around the globe. Product and component reliability and durability are assured by meeting various time and environmental tests. Product performances are verified for accuracy and measured against multiple standards (i.e. IEC, HVI, Free Flow, etc.), not just one.



EVOLUTION

Elica Evolution:

A super-compact ventilation system comprised of miniaturized / finely engineered components, which provide a platform for creating artistically interesting shapes that provide a splash of design and decoration for the room. Not just a pretty face, the patented Evolution system is a highly effective ventilation system, that won't over power the kitchen or disrupt the glorious views to the outdoors. Evolution systems come equipped with a high quality ambient lighting system that is dimmable plus a unique manual control that can be operated remotely.



AMBIENT LIGHT

Elica Ambient Light:

Whether you want to see, play, cook or live, lighting is a vital ingredient. All Elica hoods illuminate the cooktop effectively, but the hoods equipped with "Ambient Light" also provide diffused lighting for the surrounding environment. Giving you an extra light source for both practicality and atmosphere.



ECOLUTION

Elica Ecolution:

Utilizes a compact blower system with high quality components, that is draped with elegant shapes and colors. Each design will compliment the kitchen without obstructing views or conversations. Above all, high efficiency filters ensure effective ventilation.



ELICA DEEP SILENCE

Elica Deep Silence:

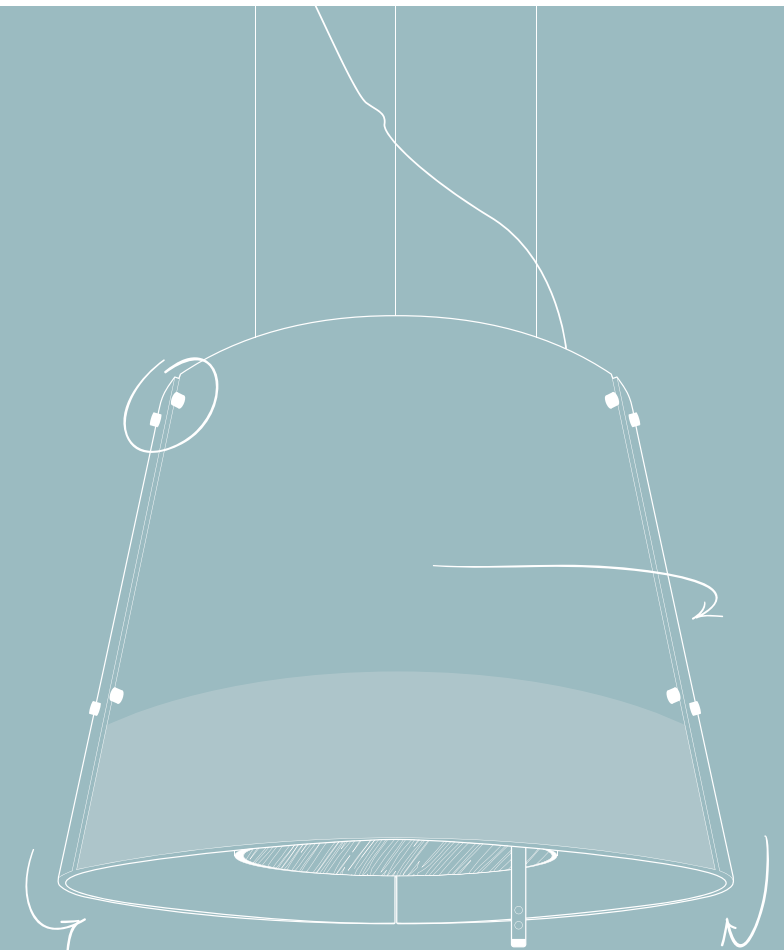
An exclusive sound deadening technology that utilizes a patented filter design, which substantially eliminates air turbulence and ultimately reduces sound levels by over 50%, compared to typical range hoods.



PERIMETER ASPIRATION

Elica Perimeter Aspiration:

First developed by Elica, this technology literally turned the market 45 degrees and opened the door to hoods that could be mounted on the wall like picture frames. The technology draws air through a narrowed channel around a face plate, which increases suction, without increasing blower speed or energy consumption.



The catalog is owned by Elica SpA. All rights are reserved. Any reproduction is strictly prohibited.

Printing will not always reproduce accurately and may vary from the original materials, colors, and tints.

Elica reserves the right to modify data and details of the products listed in this catalog, even without notice.

Visual Concept

Elica Team

Photographs & Rendering

33Multimedia Studio, Pesaro

Photolitographs & Post Production

Selecolor, Firenze

Coordination

Laura Reynoso

Matt Holmes

