



CRASHKOECK

CrashKoeck.com

OBS STREAM INSTABILITY TROUBLESHOOTING CHART

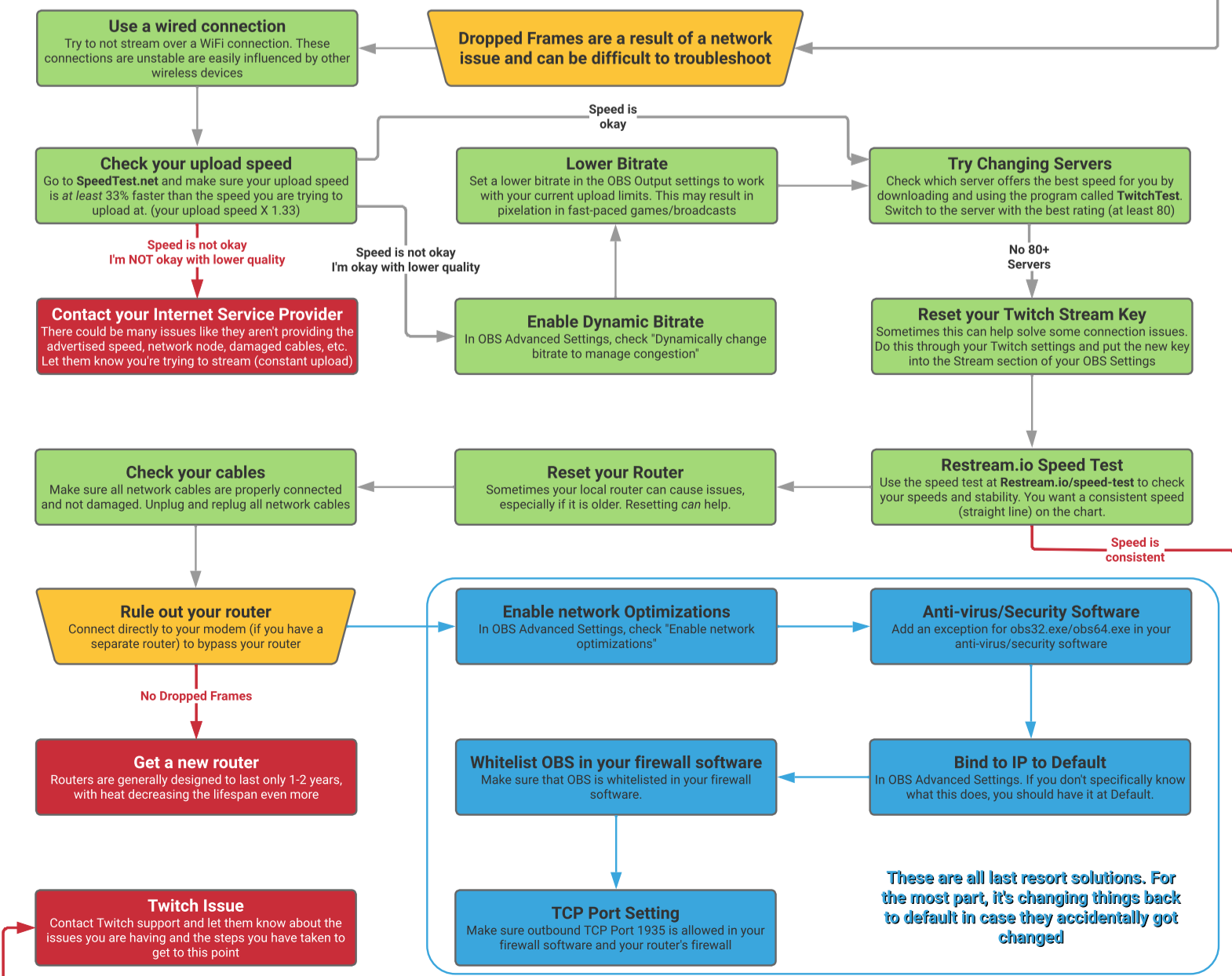
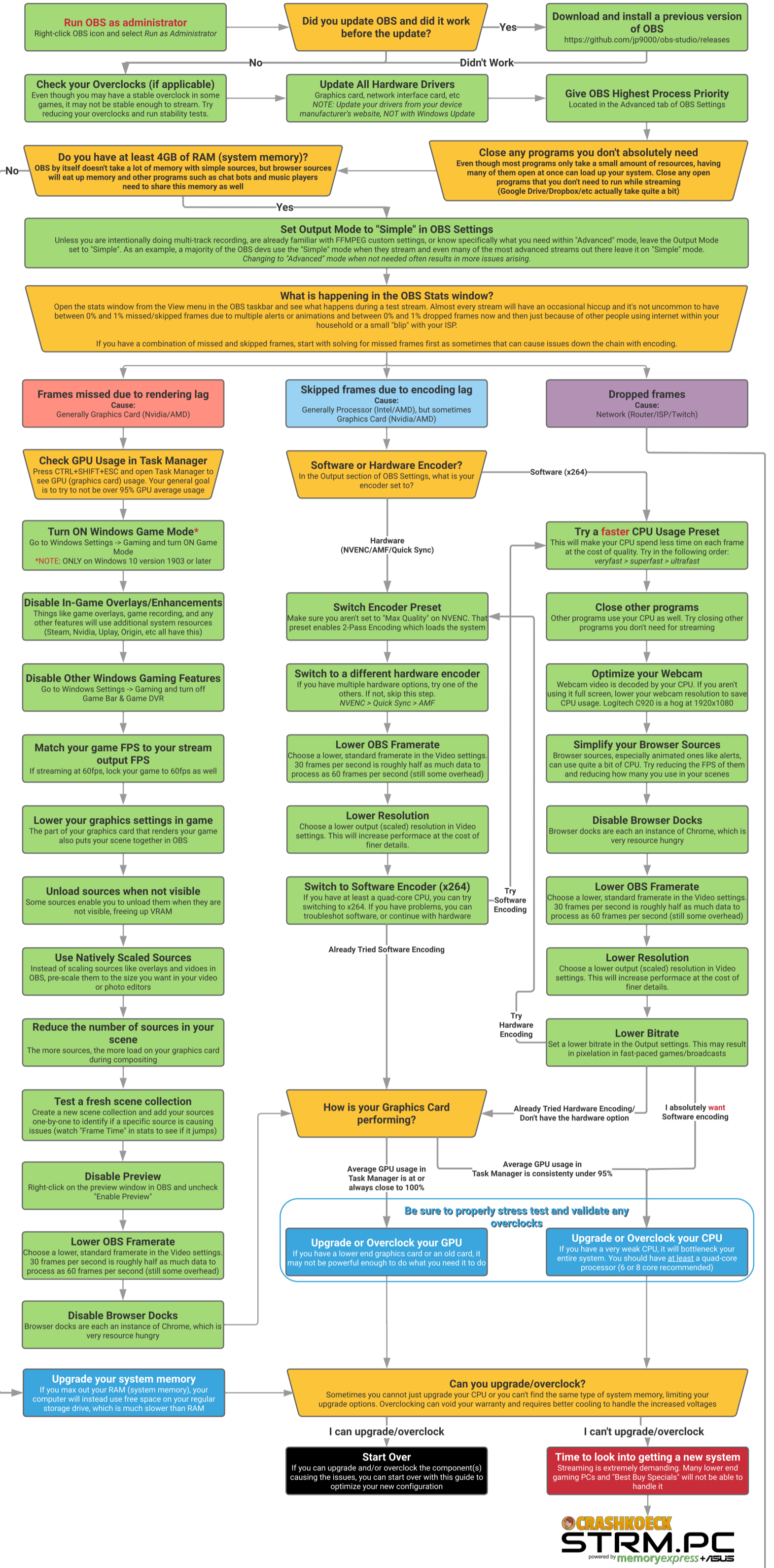
Version 1.9 | Modified 2022-04-29

Do a Twitch Bandwidth Test for at least 5 minutes after completing an action in a green box to see if your issue has been resolved or if it has at least improved. Proceed until desired result achieved or until end of tree reached - you don't have to go to the next item if the last one you tried works. Run the bandwidth test as if it were a full stream.

Notes:

- Although this chart is designed with Twitch in mind, the only part that may be different with another service like YouTube or Facebook is the "Dropped Frames" section, in which case most of the techniques will still generally apply
- Although this chart is designed with OBS in mind, most of the settings are identical in Streamlabs and SE.Live. There is no stats window in Streamlabs, but there is an alert system that will inform you if you get a high amount of missed, skipped, or dropped frames
- This chart is designed with Windows 10/11 in mind. If you are using a different operating system, some features and options won't be available to you.
- Do not skip steps without first consulting Crash or someone on the OBS team. Skipping steps not only could waste your time, but could cause more issues
- There is still some general confusion about Windows Game Mode with many streamers. Ever since Windows 10 version 1903, OBS has been whitelisted as a "game" and Windows will properly allocate resources to it. Step is noted below.
- It is **STRONGLY** recommended that if you're on a PC, run Windows 10 or 11. The newer versions of OBS are designed to take advantage of many Windows 10/11 features.

START



Find a mistake? Did I miss something? Contact me on Twitter @CrashKoeck and I'll update this sheet