



Painted Lady

Host Plant: Thistles and
Mallow Family



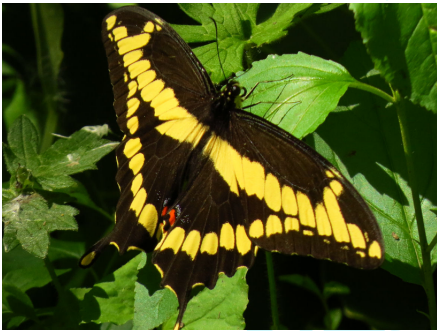
Red Admiral

Host Plant: Nettles Family



Monarch

Host Plant: Milkweed



Giant Swallowtail

Host Plant: Citrus Family



Zebra Heliconian

Host Plant: Corkystem
Passionflower



Queen

Host Plant: Milkweed



White Peacock

Host Plant: Frogfruit, Wild
Petunia



American Snout

Host Plant: Hackberry



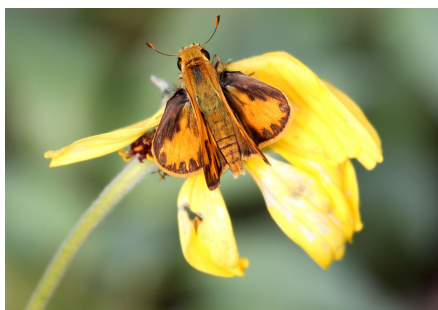
Border Patch

Host Plant: Sunflowers,
Nettles Family, Verbenas



Brown Longtail

Host Plant: Bermuda Grass, Johnson Grass



Fiery Skipper

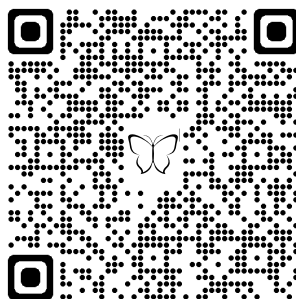
Host Plant: Bermuda Grass, St. Augustine Grass



Crimson Patch

Host Plant: Corky Stem Passionflower

REPORT YOUR FINDINGS



OUR GROUNDS PROVIDE HABITAT FOR VARIOUS SPECIES OF BUTTERFLIES THAT CAN BE SEEN IN THE RIO GRANDE VALLEY. THERE ARE ABOUT 750 SPECIES THAT CAN BE SEEN IN THE U.S., A LITTLE OVER 442 SPECIES HAVE BEEN RECORDED IN TEXAS. OF THESE, AROUND 140 SPECIES HAVE BEEN RECORDED HERE SINCE WE OPENED IN 2003. THE BUTTERFLIES IN THIS BOOKLET HIGHLIGHT A FEW OF THE MANY THAT CAN BE FOUND ALONG THE GARDENS THROUGHOUT THE YEAR.



@Edinburgwbc



(956) 381-9922



www.edinburgwbc.org

Edinburg World Birding Center



714 S. Raul Longoria Rd.

Edinburg, TX. 78542

THE CITY OF
Edinburg
PARKS & RECREATION

WORLD BIRDING
CENTER



COMMON BUTTERFLIES

AT THE
EDINBURG SCENIC
WETLANDS AND
WORLD BIRDING
CENTER