



**Yellow-winged
Pareuchaetes**



**Chlorochlamys
Phyllinaria**



**Big Headed Ground
Beetle**



Our grounds serve as a habitat for a variety of animals that are active at different times of the day. Knowing the activity patterns of animals can be helpful for observing and studying them. Here are some additional facts about animal activity patterns:

- Interestingly, 65% of mammals are nocturnal.
- Nocturnal animals have special adaptations to help them navigate in the dark, such as enhanced night vision and keen senses of smell and hearing.
- Crepuscular animals, like rabbits and deer, are often active during the low-light times of day to avoid predators while still being able to find food.
- Diurnal animals, like birds and squirrels, have adaptations for navigating in bright light, such as specialized eyes that can filter out UV light and detect color more vividly.



@Edinburgwbc

(956) 381-9922

www.edinburgwbc.org

Edinburg World Birding Center

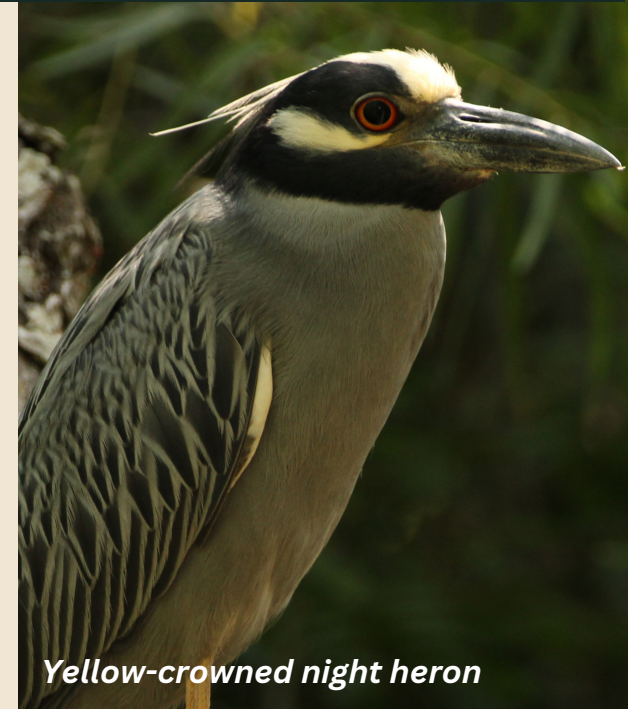
714 S. Raul Longoria Rd.

Edinburg, TX. 78542



THE CITY OF
Edinburg
PARKS & RECREATION

**WORLD BIRDING
CENTER**
Edinburg



Yellow-crowned night heron

Night Hike

EDINBURG SCENIC
WETLANDS AND WORLD
BIRDING CENTER



Glowing Click Beetle



Metazygia Orbweaver



Katydid



**Thread Legged Bug /
Emesinae**



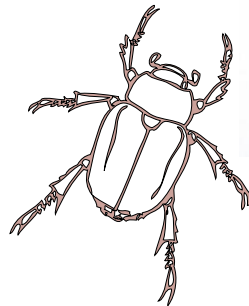
Tropical Orbweaver



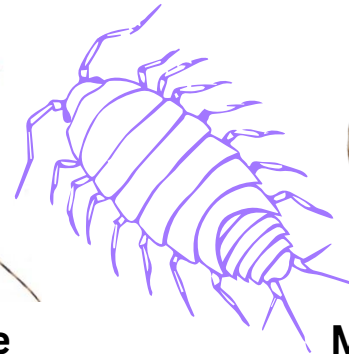
Ox Beetle



Assassin Bug



Longhorned Beetle



Mediterranean Gecko