



# SUMMIT

Micro-Kitchen  
Design Book

Designed by Summit, the Appliance Industry's  
Answer to Space-Challenged Kitchens



# Micro-Kitchen Design Book

## Small Kitchen Layouts Starting With 8' of Wall Space

### The Appliance Industry's Answer to Space-Challenged Kitchens

Designing a micro-apartment has its challenges, but furnishing it with a full service kitchen doesn't have to be one of them. Summit's line of slim-fitting refrigeration, cooking, and housecare appliances lets you provide your clients with the full convenience of a standard kitchen in less than half the size.

To demonstrate just how big a small kitchen can feel with the right appliance choices, we've put together these kitchen designs using our signature collection. You probably have even better ideas about how to make the best use of kitchen space, but if you'd like to learn more, we encourage you to visit us online or call our product specialists to learn what Summit can do for you. Whether you're designing a tiny home, studio apartment, temporary lodging, or any other small kitchen, we truly believe that with the right appliances, even the smallest space will feel like home.

### About Us

Since 1969, Felix Storch, Inc. has specialized in bringing quality appliances to small kitchen spaces through its Summit Appliance division. Today, we are ISO 9001:2015 qualified, manufacturing and distributing a variety of products throughout North America. We offer a unique range of specialty appliances for smaller kitchen spaces, including the industry's largest selection of built-in undercounter refrigeration. Learn more at [summitappliance.com](http://summitappliance.com)

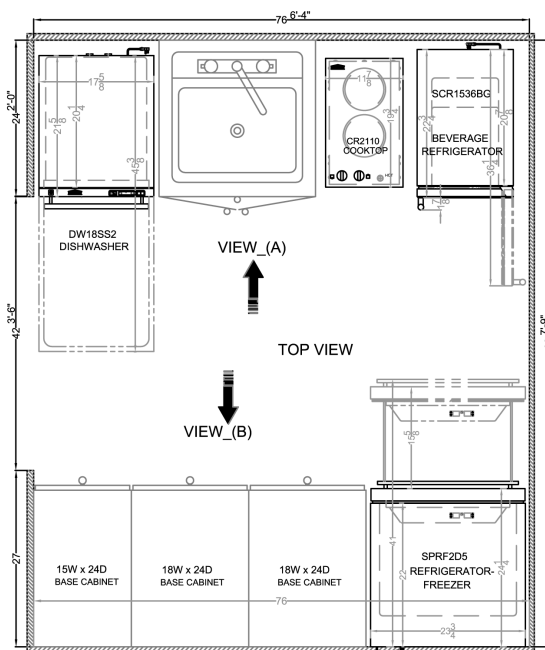
### Table of Contents

#### Kitchen Designs

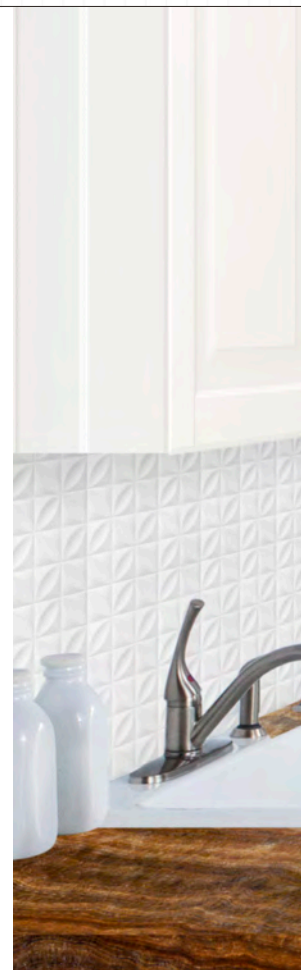
- 8' One-Wall Kitchen ..... p. 4
- 9' One-Wall Kitchen Variation ..... p. 6
- 8'1 One-Wall Kitchen ..... p. 8
- 6'3 x 7'9 Galley Kitchen ..... p. 10
- 6'3 x 7'9 Galley Kitchen ..... p. 12
- 6'4 x 7'9 Galley Kitchen ..... p. 14
- 4'4 x 7'4 L-Shaped Kitchen ..... p. 16
- 6'9 x 6'6 L-Shaped Kitchen ..... p. 18

#### Appliance Directory

- Refrigerator-Freezers – Full-Sized ..... p. 20
- Refrigeration – Undercounter ..... p. 21
- Wine & Beverage – Undercounter ..... p. 22
- Dishwashers & Laundry ..... p. 23
- Ranges – Electric ..... p. 24
- Ranges - Gas ..... p. 25
- Cooktops - Electric ..... p. 26
- Cooktops - Induction ..... p. 27
- Cooktops – Gas ..... p. 27
- Speed Ovens, Microwaves, & Wall Ovens ..... p. 28
- Range Hoods ..... p. 29
- Options ..... p. 30



See more of this kitchen on page 15





**SUMMIT**



Access our  
products in the  
2020 Cloud





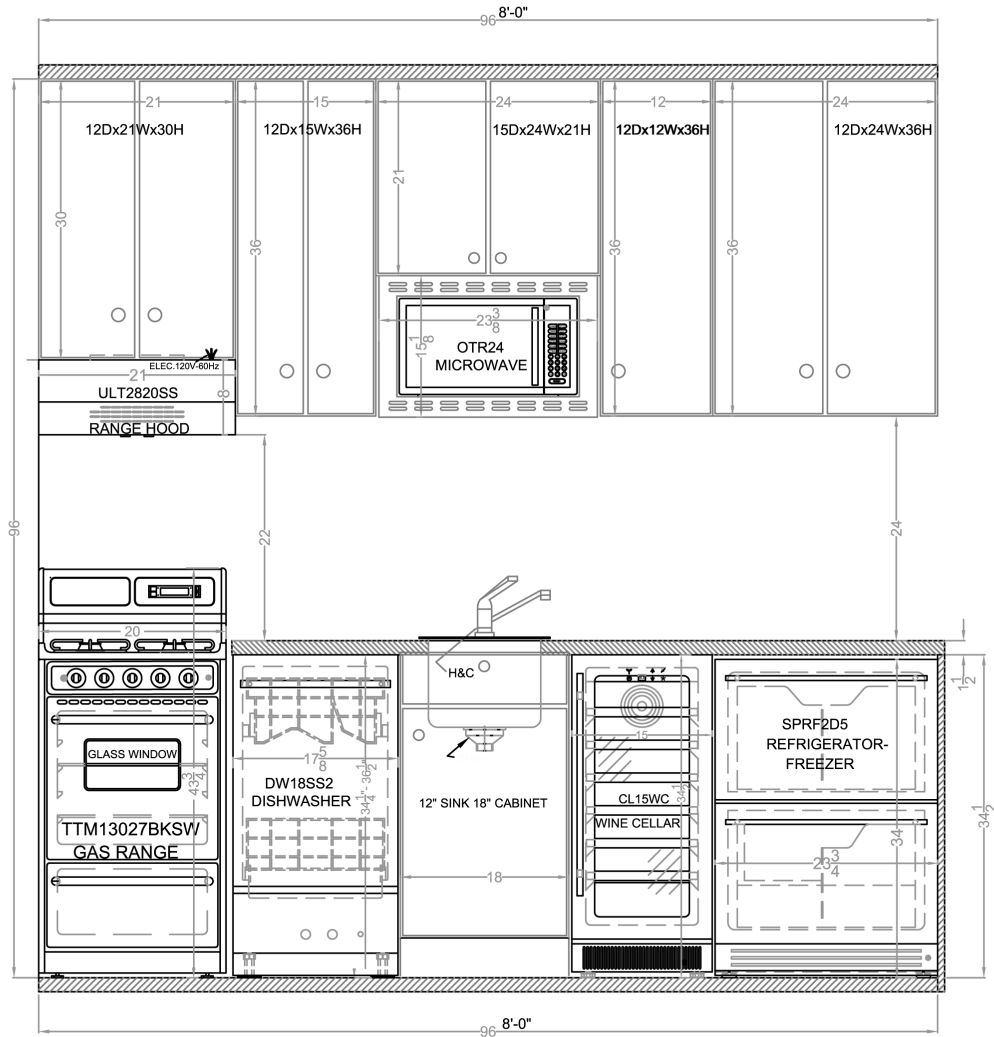


# 8' One-Wall Kitchen



## Design# KITC16205

A traditional one-wall kitchen offers plenty of opportunity for full functionality, with a wine cellar and dishwasher included. Depending on your setup, find the perfect gas or electric range in a slim 20" fit.



Drawings available in PDF or AutoCAD at [www.summitappliance.com/smallkitchenplans](http://www.summitappliance.com/smallkitchenplans)

### The Tiny Kitchen MVP • 20" Ranges

When every inch counts, there's no reason to waste ten! Standard gas and electric ranges come in a 30" width, but Summit offers plenty of 20" wide choices that maintain all the same features you need in a slimmer footprint. These stoves offer the same cooking capabilities as larger ranges, with only a minor reduction in oven capacity. Perfect that turkey or host a small dinner party while freeing up convenient counter space.





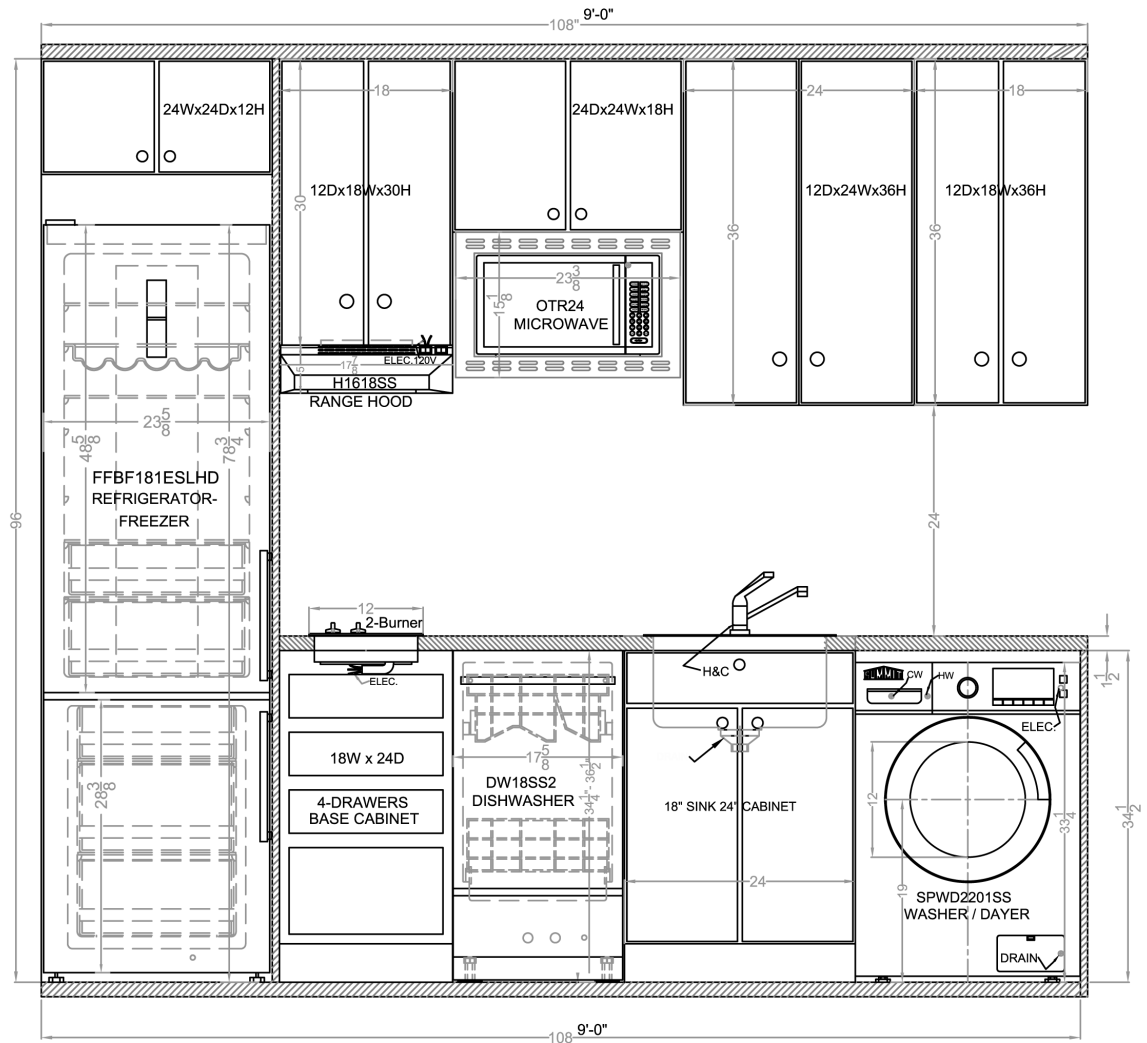


# 9' One-Wall Kitchen

**SUMMIT**

## Design# KITC16230

With just 9 feet of kitchen space, you can create a full-sized feel by choosing slim but tall refrigerators to keep the capacity residents have come to expect from more traditionally sized kitchens.



Drawings available in PDF or AutoCAD at [www.summitappliance.com/smallkitchenplans](http://www.summitappliance.com/smallkitchenplans)



### Complete Cooking Convenience In 24" • European Speed Ovens

Meet the modern home cook's favorite new appliance and a small kitchen designer's secret weapon: the speed oven. This built-in unit combines the features of a microwave, broiler, and oven, along with a convection function, all in a sleek European design with digital controls and a stainless steel finish. Build it in above or below the cabinetry.





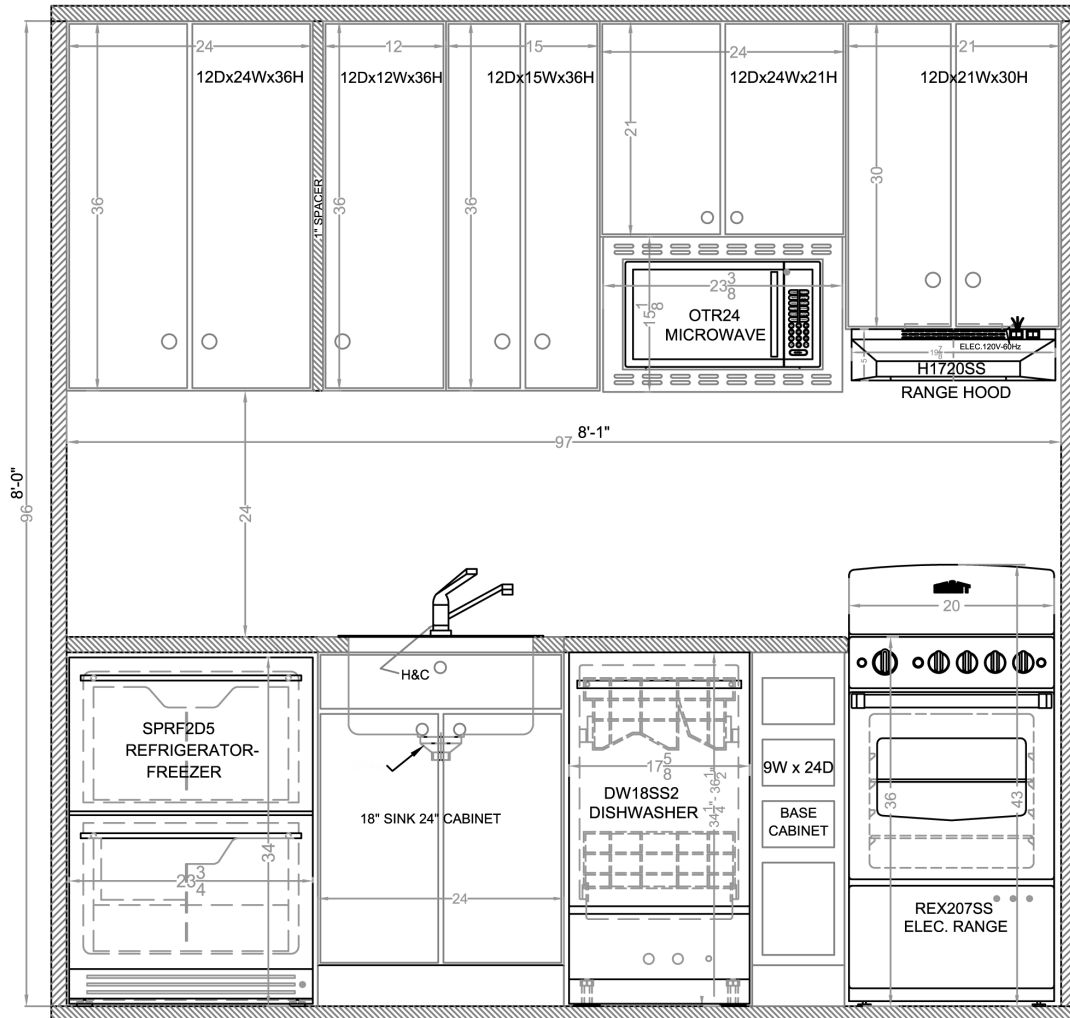


# 8'1 One-Wall Kitchen



## Design# KITC16215

Simple but functional, our 8'1 kitchen includes all the key appliances you need with modern twists, such as a drawer unit with a separate refrigerator and freezer compartment.



Drawings available in PDF or AutoCAD at [www.summitappliance.com/smallkitchenplans](http://www.summitappliance.com/smallkitchenplans)

### Modern Style With Added Space Savings • Drawer Refrigeration

Rounded doors and heavy duty handles on standard full-sized refrigerators look great from the front, but when you open the door in a small kitchen, those little extras can take up a lot of space. With a more luxurious look and smarter design, undercounter drawer refrigerators and freezers offer a smart alternative that won't require any added width while providing just the right capacity for your weekly groceries.





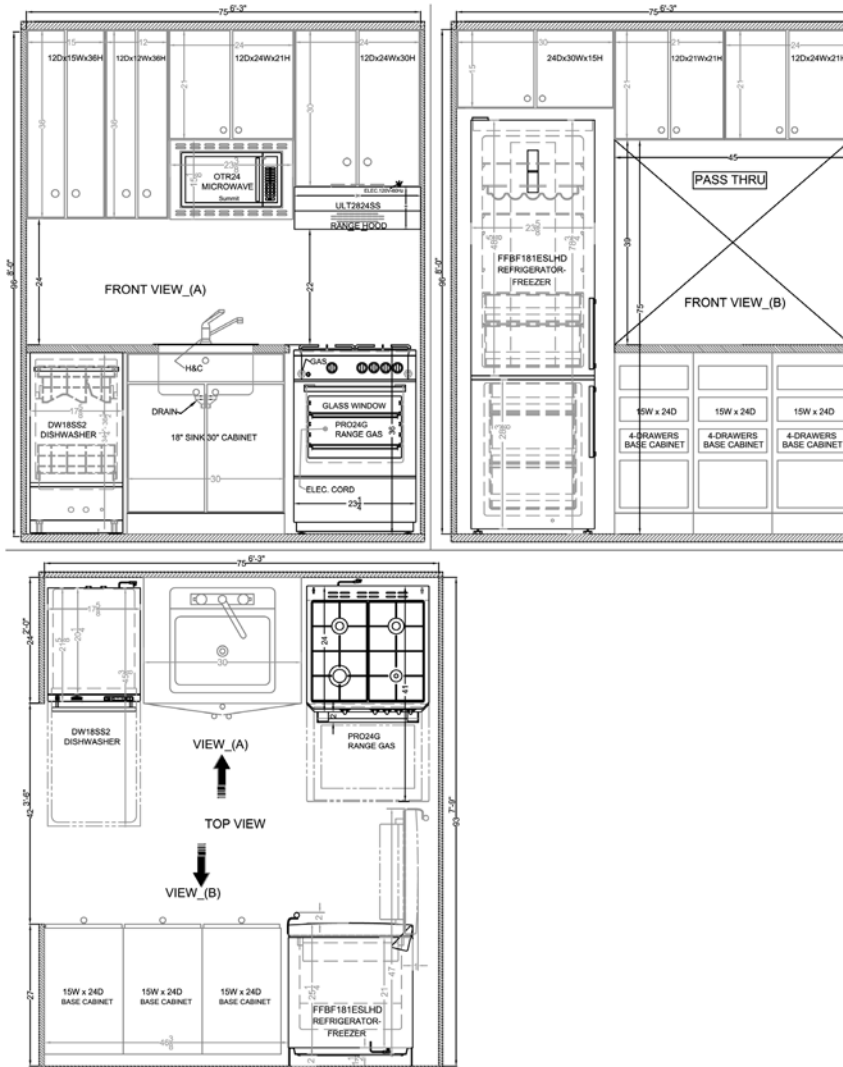


# 6'3" x 7'9" Galley Kitchen



## Design# KITC16620

Look at all that counter space! By moving the microwave above the counter and saving room with a slim refrigerator, you can provide a larger working area for meal preparation.



Drawings available in PDF or AutoCAD at [www.summitappliance.com/smallkitchenplans](http://www.summitappliance.com/smallkitchenplans)

### Complete the Package • 18" Dishwashers

It might seem like a luxury, but every home cook appreciates a dishwasher. At just 18" wide, our slim line model is a simple step to making a tiny kitchen feel truly complete. The DW18SS2 easily holds 8 place settings which should provide more than enough room for any dinner party held in a home of this size.





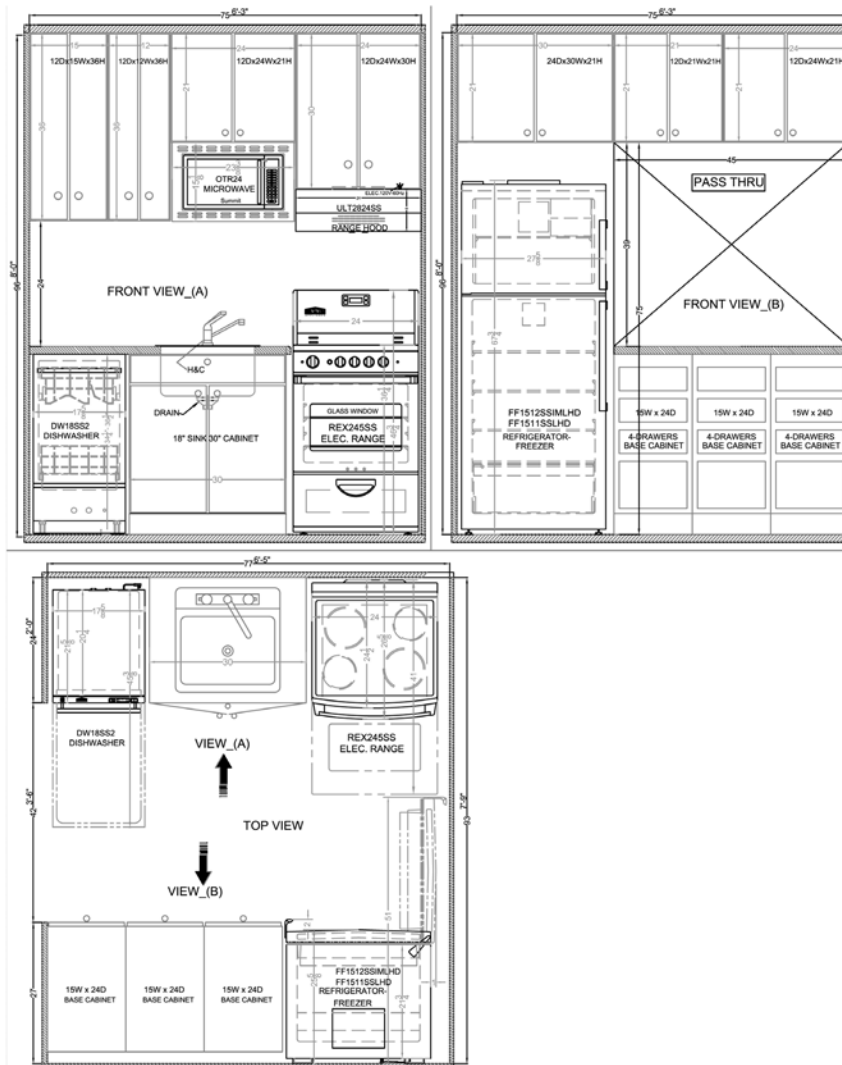


# 6'3 x 7'9 Galley Kitchen

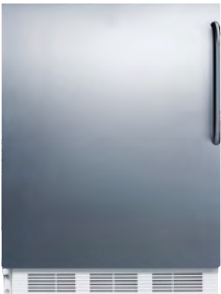


## Design# KITC16610

This slight adjustment to our previous design demonstrates how to use the same space with different refrigerator and stove configurations. The possibilities are endless!



LHD Swing



RHD Swing



Drawings available in PDF or AutoCAD at [www.summitappliance.com/smallkitchenplans](http://www.summitappliance.com/smallkitchenplans)

### No Room For Error: LHD vs RHD

When ordering your refrigerator, always make sure to confirm the direction of the door swing. Most units ship with a standard right hand door. While many units are designed to be user-reversible, some models may only be changed at the factory level due to the handle configuration, digital control setup, or other factors. Summit can almost always accommodate your needs when ordered correctly. Nobody wants to fight with their refrigerator door on a daily basis, but in a micro-kitchen, it can be an unwinnable battle.





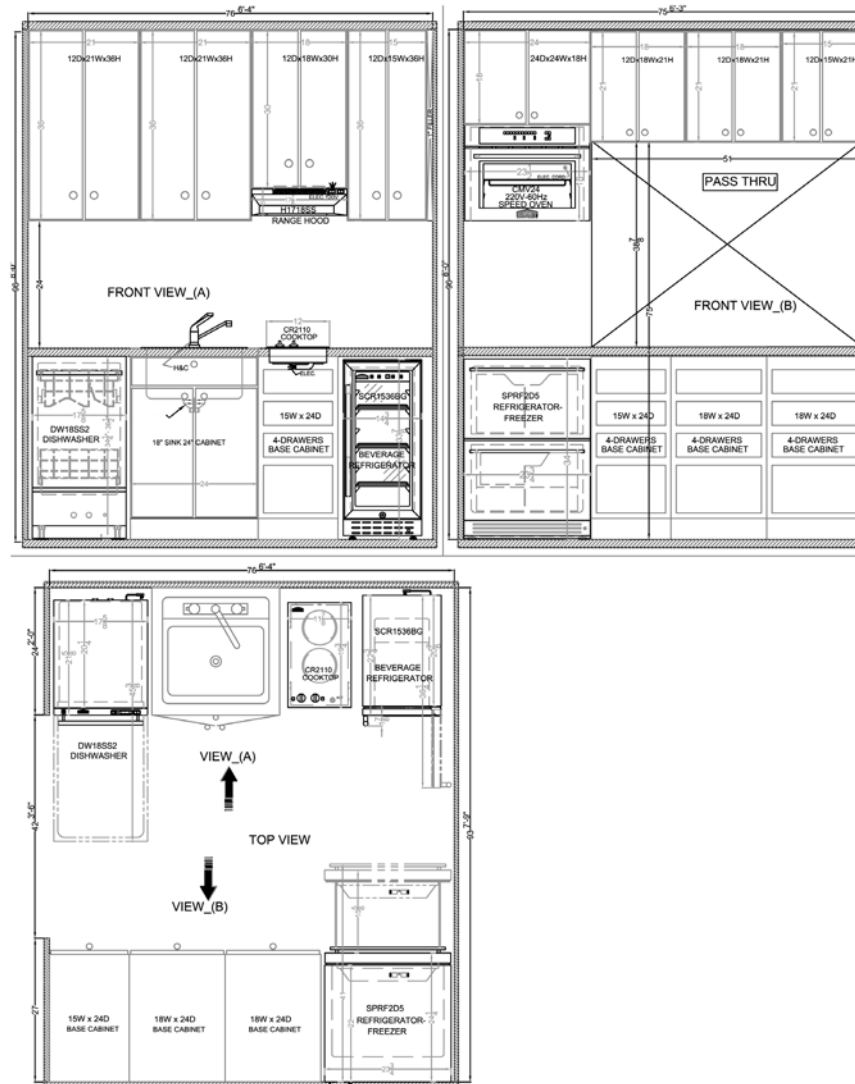


# 6'4 x 7'9 Galley Kitchen



## Design# KITC16615

By using a more space conscious 2-burner cooktop and bringing the oven to the upper cabinets, you can maximize the counter surface without sacrificing function.



Drawings available in PDF or AutoCAD at [www.summitappliance.com/smallkitchenplans](http://www.summitappliance.com/smallkitchenplans)

### Ventilation In Every Size • 18", 20", 24", & Larger Range Hoods

Proper smoke and odor removal is even more important in small apartment kitchens, where there's less space for ventilation. With Summit's extra slim line of range hoods, you can ensure your kitchen is safely vented in as little as 18" of width.





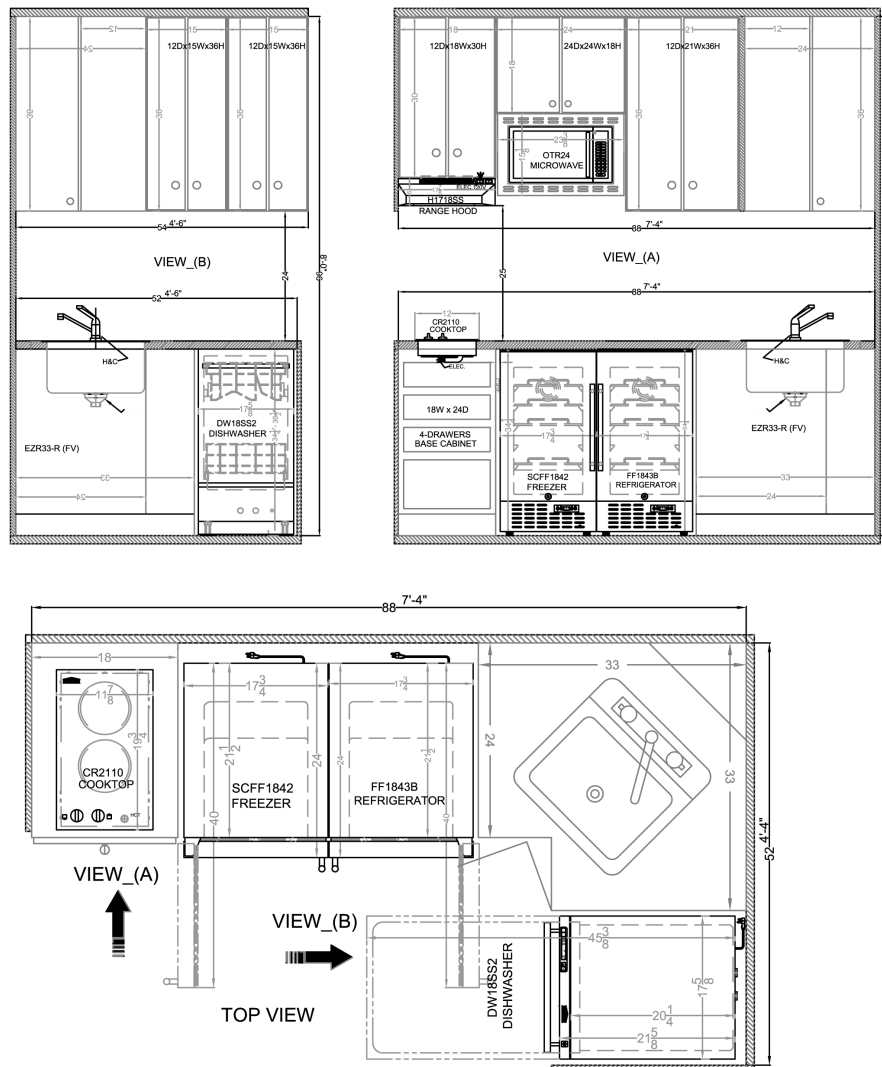


# 4'4 x 7'4 L-Shaped Kitchen



## Design# KITC16405

For designs that might call for more wall cabinetry, our built-in refrigeration sets offer plenty of opportunity to free up space above the counter.



Drawings available in PDF or AutoCAD at [www.summitappliance.com/smallkitchenplans](http://www.summitappliance.com/smallkitchenplans)

### Free Up Floor Space • Built-In Cooktops

By combining cooktops with built-in microwaves or speed ovens, there's simply no need to take up a full 20"+ of kitchen real estate with a stove. 2-burner cooktops are perfect for studio apartments and can be ordered in gas, electric, or induction style. Our complete cooktop line includes even more unique choices, with 5-burner gas models sized at just 27" wide to take up less counter space than traditional models.



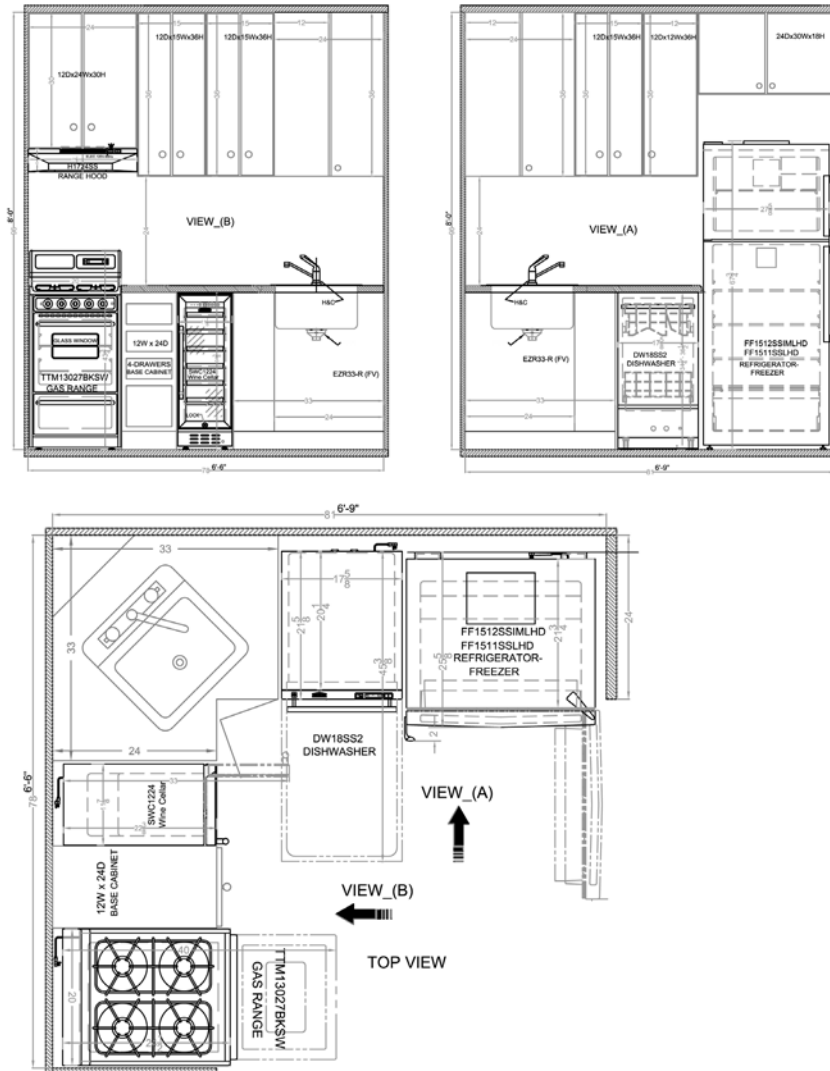


# 6'9 x 6'6 L-Shaped Kitchen



## Design# KITC16410

It's all there: a gas or electric range with a matching hood, dishwasher, full-sized refrigerator, and even a wine cellar. The right appliances can truly make the smallest space feel just right.



Drawings available in PDF or AutoCAD at [www.summitappliance.com/smallkitchenplans](http://www.summitappliance.com/smallkitchenplans)

### Leftover Space? Let's Have a Toast! • 6" & 12" Wine Cellars

Dedicating an entire appliance to wine storage may seem unnecessary in a tiny kitchen, but when your wine cellar only needs 6" of space under the counter, it makes perfect sense. By inserting uniquely slim undercounter appliances into your design, you can open up the kitchen to new possibilities.

# Appliance Specifications - Counter Depth Refrigerator-Freezers



## EUROPEAN BOTTOM FREEZER REFRIGERATOR FFBF181ES

Height: 78 ¾"  
Height to hinge cap: 79 ¼"  
Width: 23 ⅝"  
Width w/Door Open: 24 ⅝"  
Depth: 25 ¼"  
Depth w/Handle: 27 ¼"  
Depth w/Door 90°: 47"  
Capacity: 12.8 cu.ft.  
Door Swing: Specify RHD/LHD  
*Available for built-in installation  
as FFBF181ESBI; 74" height option  
also available (FFBF249SS)*



## EUROPEAN BOTTOM FREEZER REFRIGERATORS

**FFBF281W** (White)  
**FFBF286SS** (Stainless Steel)  
Height: 75 ⅜"  
Width: 27 ¼"  
Width w/Door Open: 28 ¼"  
Depth: 27"  
Depth w/Handle: 28 ¾"  
Depth w/Door 90°: 53"  
Capacity: 16.8 cu.ft.  
Door Swing: Reversible



## TOP FREEZER REFRIGERATOR

**FF1511SS** (Stainless Steel)  
Height: 67 ¾"  
Width: 27 ⅝"  
Width w/Door Open: 28 ⅝"  
Depth: 25 ⅝"  
Depth w/Handle: 27 ⅝"  
Depth w/Door 90°: 50 ¾"  
Capacity: 12.6 cu.ft.  
Door Swing: Reversible



## TOP FREEZER REFRIGERATOR

**FF946W** (White)  
**FF948SS** (Stainless Steel)  
Height: 64 ¾"  
Height to hinge cap: 65 ¾"  
Width: 22"  
Width w/Door Open: 23 ¾"  
Depth: 26"  
Depth w/Door 90°: 44 ¼"  
Capacity: 8.8 cu.ft.  
Door Swing: Reversible



## 22" WIDE TOP FREEZER REFRIGERATOR FF923PL

Height: 66 ⅝"  
Height to hinge cap: 67 ⅞"  
Width: 21 ¼"  
Width w/Door Open: 22"  
Depth: 23 ¼"  
Depth w/Door 90°: 43"  
Capacity: 8.9 cu.ft.  
Door Swing: Reversible



## EUROPEAN BOTTOM FREEZER REFRIGERATORS

**FFBF241W** (White)  
**FFBF246SS** (Stainless Steel)  
Height: 72 ¾"  
Width: 23 ¼"  
Width w/Door Open: 24 ¼"  
Depth: 25"  
Depth w/Handle: 26 ¾"  
Depth w/Door 90°: 47"  
Capacity: 11.35 cu.ft.  
Door Swing: Reversible



## TOP FREEZER REFRIGERATOR

**FF1427W** (White)  
**FF1427SS** (Stainless Steel)  
Height: 68 ¼"  
Height to hinge cap: 69 ¼"  
Width: 26"  
Width w/Door Open: 27 ½"  
Depth: 26 ¼"  
Depth w/Door 90°: 49 ½"  
Capacity: 12.9 cu.ft.  
Door Swing: Reversible



## TOP FREEZER REFRIGERATORS

**FF1118W** (White)  
**FF1119B** (Black)  
**FF1159SS** (Stainless Steel)  
Height: 58 ⅝"  
Height to hinge cap: 58 ⅞"  
Width: 23 ⅝"  
Width w/Door Open: -  
Depth: 26"  
Depth w/Door 90°: 48 ½"  
Capacity: 10.3 cu.ft.  
Door Swing: Reversible

All models on this page are available with a factory-installed icemaker



# Appliance Specifications— Built-In Undercounter Refrigeration



## 15" ALL-REFRIGERATOR

**FF1532B**

Height: 34"  
Width: 14 3/4"  
Depth: 22 3/4"  
Depth w/Handle: 24 5/8"  
Depth w/Door 90°: 36 1/4"  
Capacity: 3 cu.ft.  
Door Swing: Reversible  
Options: Black, Stainless Steel,  
Panel-Ready

*Matching freezer available; for  
ADA height option, see our ALR15B*



## 24" ALL-REFRIGERATOR

**FF64BSS**

Height: 34"  
Width: 23 5/8"  
Depth: 23 1/2"  
Depth w/Handle: 25 3/8"  
Depth w/Door 90°: 45 5/8"  
Capacity: 4.6 cu.ft.  
Door Swing: Reversible  
Options: Stainless Steel,  
Panel-Ready

*Matching freezer available*



## 24" ALL-REFRIGERATOR

**FF61BI (White)**

**FF63BBI (Black)**

Height: 32 1/4" to 34"  
Width: 23 5/8"  
Depth: 23"  
Depth w/Handle: 24 5/8"  
Depth w/Door 90°: 45 3/8"  
Capacity: 5.5 cu.ft.  
Door Swing: Reversible  
Options: Black, White, Stainless Steel,  
Panel-Ready, ADA Height



## 24" DRAWER REFRIGERATOR-FREEZER

**SPRF2D5**

Height: 34"  
Width: 23 3/4"  
Depth: 24 1/4"  
Depth w/Handle: 25 3/8"  
Depth w/Door 90°: 37 1/8"  
Capacity: 4.9 cu.ft.  
Door Swing: 2 drawers  
Options: Icemaker



## 18" ALL-REFRIGERATOR

**FF1843B**

Height: 34"  
Width: 17 3/4"  
Depth: 24"  
Depth w/Handle: 25 3/4"  
Depth w/Door 90°: 40"  
Capacity: 2.7 cu.ft.  
Door Swing: Reversible  
Options: Black, Stainless Steel,  
Panel-Ready, ADA Height

*Matching freezer available*



## 24" DRAWER REFRIGERATOR

**FF642D**

Height: 34"  
Width: 23 5/8"  
Depth: 23 3/8"  
Depth w/Handle: 25"  
Depth w/Door 90°: 39 3/8"  
Capacity: 3.4 cu.ft.  
Door Swing: 2 drawers  
Options: Stainless Steel,  
Panel-Ready

*Matching freezer available*



## 24" REFRIGERATOR-FREEZER

**CT661BI (White)**

**CT663BBI (Black)**

Height: 33 1/2" to 34"  
Width: 23 5/8"  
Depth: 23"  
Depth w/Handle: 24 5/8"  
Depth w/Door 90°: 45 3/8"  
Capacity: 5.1 cu.ft.  
Door Swing: Reversible  
Options: Black, White, Stainless Steel,  
Panel-Ready, ADA Height



## 30" REFRIGERATOR-FREEZER

**FFRF3075W (White)**

**FFRF3070B (Black)**

Height: 34"  
Width: 29 1/2"  
Depth: 23 5/8"  
Depth w/Handle: 25 3/8"  
Depth w/Door 90°: 37 1/4"  
Capacity: 5.4 cu.ft.  
Door Swing: French  
Options: Black, White,  
Stainless Steel, Panel-Ready

More Choices Available. View our complete collection at [summitappliance.com](http://summitappliance.com)

# Appliance Specifications— Built-In Undercounter Wine & Beverage Centers



**6" WINE CELLAR  
SWC007**

Height: 32 1/4"  
Width: 5 7/8"  
Depth: 20 3/4"  
Depth w/Handle: 22 3/8"  
Depth w/Door 90°: 33"  
Capacity: 7 bottles  
Door Swing: Reversible



**15" BEVERAGE CENTER  
SCR1536BG**

Height: 33 7/8"  
Width: 14 3/4"  
Depth: 22 3/4"  
Depth w/Handle: 24 5/8"  
Depth w/Door 90°: 36 1/4"  
Capacity: 2.45 cu.ft.  
Door Swing: Reversible  
Options: Black or stainless steel cabinet

*Matching beverage center available*



**18" BEVERAGE CENTER  
CL181WBV**

Height: 34"  
Width: 17 1/2"  
Depth: 23 1/2"  
Depth w/Handle: 25 3/8"  
Depth w/Door 90°: 39 5/8"  
Capacity: 2.9 cu.ft.  
Door Swing: Reversible  
Options: Black or stainless steel cabinet

*Matching wine cellar available*



**24" 2-ZONE WINE & BEVERAGE CENTER  
ALFD24WBV**

Height: 32" to 33 1/2"  
Width: 23 3/8"  
Depth: 22 3/4"  
Depth w/Handle: 24 5/8"  
Depth w/Door 90°: 33"  
Capacity: 4.6 cu.ft.  
Door Swing: French  
Options: Black or stainless steel cabinet

*Height adjustable, with kickplate extender included*



**12" WINE CELLAR  
SWC1224B**

Height: 34 3/8"  
Width: 11 7/8"  
Depth: 22 3/8"  
Depth w/Handle: 24 1/8"  
Depth w/Door 90°: 33"  
Capacity: 21 bottles  
Door Swing: Reversible

*Matching beverage center available*



**15" WINE CELLAR  
CL15WC**

Height: 34 1/2"  
Width: 15"  
Depth: 23 3/8"  
Depth w/Handle: 25"  
Depth w/Door 90°: 37 1/4"  
Capacity: 34 bottles  
Door Swing: Reversible  
Options: Black or stainless steel cabinet



**18" WINE CELLAR  
SWC1840B**

Height: 34 1/4"  
Width: 17 3/4"  
Depth: 23 1/2"  
Depth w/Handle: 25"  
Depth w/Door 90°: 39 3/4"  
Capacity: 34 bottles  
Door Swing: Reversible  
Options: Black or stainless steel cabinet, ADA Height

*Matching beverage center available*



**24" 2-ZONE WINE CELLAR  
SWC532LBIST**

Height: 33 1/2"  
Height to hinge cap: 34"  
Width: 23 5/8"  
Depth: 23 3/8"  
Depth w/Handle: 25 1/4"  
Depth w/Door 90°: 46"  
Capacity: 44 bottles  
Door Swing: Reversible  
Options: Black or stainless steel cabinet, Panel-ready door trim

*Matching beverage center available*



# Appliance Specifications— Laundry & Dishwashers



## 18" DISHWASHERS DW18SS2

Finish: Stainless steel/Panel-ready  
Height: 34 1/4"  
Width: 17 3/8"  
Depth: 22 1/8"  
Depth w/Handle: 24"  
Depth w/Door 90°: 45 3/8"  
Capacity: 8 place settings  
Options: ADA height



## 24" DISHWASHERS DW2433SS2

Finish: Stainless steel  
Height: 32 1/2" to 34 1/4"  
Width: 23 1/2"  
Depth: 22 1/4"  
Depth w/Handle: 24 1/8"  
Depth w/Door 90°: 45 1/2"  
Capacity: 12 place settings  
Options: ADA height



## 24" ALL-IN-ONE NON-VENTED WASHER/DRYER SPWD2200W

Finish: White  
Height: 33 1/4"  
Width: 23 3/8"  
Depth: 24 1/4"  
Depth w/Door 90°: 41 1/2"  
Voltage: 115V  
Wash capacity: 15.4 lbs  
Dry capacity: 7.7 lbs



## 24" ALL-IN-ONE NON-VENTED WASHER/DRYER SPWD2201SS

Finish: Platinum  
Height: 33 1/4"  
Width: 23 3/8"  
Depth: 24 1/4"  
Depth w/Door 90°: 41 1/2"  
Voltage: 115V  
Wash capacity: 15.4 lbs  
Dry capacity: 7.7 lbs



More space-saving  
laundry solutions  
coming soon

# Appliance Specifications - Electric Ranges



**20" SMOOTH-TOP**  
**REX2051WRT**(White)  
**REX206BRT** (Black)  
**REX2071SSRT** (Stainless Steel)  
 Height: 38"  
 Width: 20"  
 Depth: 24 1/2"  
 Depth w/Handle: 26"  
 Depth w/Door 90°: 40"  
 Backguard: Basic 4"  
 Broiler: In Oven  
 ADA Compliant: Yes



**24" SMOOTH-TOP**  
**REX2421W** (White)  
**REX2431B** (Black)  
**REX2451SS** (Stainless Steel)  
 Height: 42"  
 Width: 23 1/2"  
 Depth: 24"  
 Depth w/Handle: 25 3/4"  
 Depth w/Door 90°: 43 1/4"  
 Broiler: In Oven  
 ADA Compliant: Yes



**20" STAINLESS STEEL COIL-TOP**  
**TEM130BKWY**  
 Height: 44"  
 Width: 20"  
 Depth: 24"  
 Depth w/Handle: 26 1/2"  
 Depth w/Door 90°: 40"  
 Backguard: Deluxe 8"  
 Broiler: In Oven  
 ADA Compliant: No

*Also available in white or black*



**24" STAINLESS STEEL COIL-TOP**  
**TEM630BKWY**  
 Height: 44"  
 Width: 24"  
 Depth: 24"  
 Depth w/Handle: 26 1/2"  
 Depth w/Door 90°: 40"  
 Backguard: Deluxe 8"  
 Broiler: In Oven  
 ADA Compliant: No

*Also available in white or black*



**20" COIL TOP**  
**RE203W** (White)  
 Height: 41 1/2"  
 Width: 20"  
 Depth: 24"  
 Depth w/Handle: 26 1/8"  
 Depth w/Door 90°: 41"  
 Broiler: In Oven  
 ADA Compliant: Yes



**24" SLIDE-IN SLIDE-IN SMOOTH-TOP**  
**CLRE24WH** (White)  
**CLRE24** (Stainless Steel)  
 Height: 36"  
 Width: 23 1/2"  
 Depth: 24 1/8"  
 Depth w/Handle: 26 1/8"  
 Depth w/Door 90°: 41 1/4"  
 Broiler: In Oven  
 ADA Compliant: Yes



**20" SLIDE-IN COIL-TOP**  
**TEM110BRWY**  
 Height: 36"  
 Width: 20"  
 Depth: 24"  
 Depth w/Handle: 26 1/2"  
 Depth w/Door 90°: 40"  
 Backguard: Low 1"  
 Broiler: In Oven  
 ADA Compliant: Yes

*Also available in white or black*



**24" SLIDE-IN COIL-TOP**  
**TEM610BRWY**  
 Height: 36"  
 Width: 24"  
 Depth: 24"  
 Depth w/Handle: 26 1/2"  
 Depth w/Door 90°: 40"  
 Backguard: Low 1"  
 Broiler: In Oven  
 ADA Compliant: Yes

*Also available in white or black*



# Appliance Specifications- Gas Ranges



**20" STAINLESS STEEL  
SEALED BURNER  
PRO201SS**

Height: 43"  
Width: 20"  
Depth: 24 1/2"  
Depth w/Handle: 26"  
Depth w/Door 90°: 40 1/2"  
Backguard: Basic 4"  
Broiler: Lower Compartment  
ADA Compliant: Yes



**24" SEALED BURNER  
OPEN BURNER  
RG244WS**

Height: 42"  
Width: 23 1/2"  
Depth: 23 1/2"  
Depth w/Handle: 25 3/4"  
Depth w/Door 90°: 43 1/4"  
Broiler: Lower Compartment  
ADA Compliant: Yes



**20" STAINLESS STEEL  
SEALED BURNER  
TTM13027BKSW**

Height: 44"  
Width: 20"  
Depth: 24"  
Depth w/Handle: 26 1/2"  
Depth w/Door 90°: 40"  
Backguard: Deluxe 8"  
Broiler: Lower Compartment  
ADA Compliant: No

*Also available in white or black*



**24" STAINLESS STEEL  
SEALED BURNER  
TTM63027BKSW**

Height: 44"  
Width: 24"  
Depth: 24"  
Depth w/Handle: 26 1/2"  
Depth w/Door 90°: 40"  
Backguard: Deluxe 8"  
Broiler: Lower Compartment  
ADA Compliant: No

*Also available in white or black*



**20" SEALED BURNER  
VALUE CHOICE  
RG200WS**

Height: 42"  
Width: 19 1/2"  
Depth: 23 1/2"  
Depth w/Handle: 25 3/4"  
Depth w/Door 90°: 43 1/4"  
Broiler: Lower Compartment  
ADA Compliant: Yes



**24" EUROPEAN  
SEALED BURNER  
PRO241G (White)  
PRO24G (Stainless Steel)**

Height: 36"  
Width: 23 1/4"  
Depth: 24"  
Depth w/Handle: 26"  
Depth w/Door 90°: 44"  
Backguard: Low 1"  
Broiler: In Oven  
ADA Compliant: Yes



**20" SLIDE-IN STAINLESS  
STEEL SEALED BURNER  
TTM11027BRWS**

Height: 36"  
Width: 20"  
Depth: 24"  
Depth w/Handle: 26 1/2"  
Depth w/Door 90°: 40"  
Backguard: Low 1"  
Broiler: Lower Compartment  
ADA Compliant: Yes

*Also available in white or black*



**24" SLIDE-IN STAINLESS  
STEEL SEALED BURNER  
TTM61027BRWS**

Height: 36"  
Width: 24"  
Depth: 24"  
Depth w/Handle: 26 1/2"  
Depth w/Door 90°: 40"  
Backguard: Low 1"  
Broiler: Lower Compartment  
ADA Compliant: Yes

*Also available in white or black*

More Choices Available. View our complete collection at [summitappliance.com](http://summitappliance.com)

# Appliance Specifications - Electric Cooktops



## 1-BURNER RADIANT COOKTOP CR1115

Burners: 1  
Surface: Schott ceramic glass  
Voltage: 115V  
Exterior Height: 3 3/8"  
Exterior Width: 11 7/8"  
Exterior Depth: 12 5/8"  
Cutout Height: 3 3/8"  
Cutout Width: 11 1/8"  
Cutout Depth: 11 7/8"  
Controls: Knobs  
ADA Compliant: Yes



## 2-BURNER RADIANT COOKTOPS

**CR2220WH (White)**  
**CR2220 (Black)**  
Burners: 2  
Surface: EuroKera ceramic glass  
Voltage: 230V  
Exterior Height: 3 3/8"  
Exterior Width: 11 7/8"  
Exterior Depth: 19 5/8"  
Cutout Height: 3 3/8"  
Cutout Width: 11 1/8"  
Cutout Depth: 19 7/8"  
Controls: Knobs  
ADA Compliant: Yes

*115V versions also available*



## 2-BURNER COIL COOKTOP CR2B224SS

Burners: 2  
Surface: Stainless steel  
Voltage: 230V  
Exterior Height: 3 3/8"  
Exterior Width: 21 1/4"  
Exterior Depth: 18"  
Cutout Height: 3"  
Cutout Width: 20"  
Cutout Depth: 16"  
Controls: Knobs  
ADA Compliant: Yes

*115V versions also available*



## 4-BURNER RADIANT COOKTOP

**CR4B23T6W (White)**  
**CR4B23T5B (Black)**  
Burners: 4  
Surface: Schott ceramic glass  
Voltage: 230V  
Exterior Height: 2"  
Exterior Width: 23 1/4"  
Exterior Depth: 20 1/2"  
Cutout Height: 3 1/4"  
Cutout Width: 22"  
Cutout Depth: 19 1/2"  
Controls: Touch  
ADA Compliant: Yes



## 2-BURNER SOLID DISK COOKTOP

**CSD2B230**  
Burners: 2  
Surface: Solid Disk  
Voltage: 230V  
Exterior Height: 4 1/4"  
Exterior Width: 11 1/4"  
Exterior Depth: 20"  
Cutout Height: 6"  
Cutout Width: 10 1/2"  
Cutout Depth: 19 1/4"  
Controls: Knobs  
ADA Compliant: Yes



## 2-BURNER RADIANT COOKTOPS

**CR2B23T4W (White)**  
**CR2B23T3B (Black)**  
Burners: 2  
Surface: Schott ceramic glass  
Voltage: 230V  
Exterior Height: 2"  
Exterior Width: 11 1/2"  
Exterior Depth: 20 1/2"  
Cutout Height: 5 7/8"  
Cutout Width: 10 3/4"  
Cutout Depth: 19 7/8"  
Controls: Touch  
ADA Compliant: Yes



## 3-BURNER RADIANT COOKTOP

**CR3240**  
Burners: 3  
Surface: EuroKera ceramic glass  
Voltage: 230V  
Exterior Height: 3 3/8"  
Exterior Width: 20 3/8"  
Exterior Depth: 19 1/8"  
Cutout Height: 3 3/8"  
Cutout Width: 19 7/8"  
Cutout Depth: 18 3/8"  
Controls: Knobs  
ADA Compliant: Yes



## 4-BURNER RADIANT COOKTOP

**CR425WH (White)**  
**CR425BL (Black)**  
Burners: 4  
Surface: Schott ceramic glass  
Voltage: 230V  
Exterior Height: 3"  
Exterior Width: 24"  
Exterior Depth: 20 1/2"  
Cutout Height: 2 1/2"  
Cutout Width: 22 1/8"  
Cutout Depth: 18 5/8"  
Controls: Knobs  
ADA Compliant: No





# Appliance Specifications- Induction & Gas Cooktops



## 1-BURNER INDUCTION COOKTOP SINC1110

Burners: 1  
Surface: Schott ceramic glass  
Voltage: 115V  
Exterior Height: 3 1/4"  
Exterior Width: 12"  
Exterior Depth: 14 3/4"  
Cutout Height: 2 7/8"  
Cutout Width: 11"  
Cutout Depth: 13 3/4"  
ADA Compliant: Yes



## 2-BURNER INDUCTION COOKTOP SINC2220

Burners: 2  
Surface: Schott ceramic glass  
Voltage: 230V  
Exterior Height: 3 1/4"  
Exterior Width: 11 3/8"  
Exterior Depth: 20 7/8"  
Cutout Height: 3"  
Cutout Width: 10 5/8"  
Cutout Depth: 19 3/8"  
ADA Compliant: Yes



## 2-BURNER GAS-ON-GLASS COOKTOP MADE IN ITALY GC2BGL

Burners: 2 sealed  
Surface: Black EuroKera glass  
Convertible to LP gas: Yes  
Exterior Height: 2"  
Exterior Width: 12 1/4"  
Exterior Depth: 20 3/8"  
Cutout Height: 2 1/2"  
Cutout Width: 11"  
Cutout Depth: 18 7/8"



## 4-BURNER GAS-ON-GLASS COOKTOP MADE IN ITALY GC424BGL

Burners: 4 sealed  
Surface: Black EuroKera glass  
Convertible to LP gas: Yes  
Exterior Height: 2"  
Exterior Width: 23 1/4"  
Exterior Depth: 20 1/2"  
Cutout Height: 2"  
Cutout Width: 21 3/4"  
Cutout Depth: 18 3/4"



## 2-BURNER INDUCTION COOKTOP SINC2B120

Burners: 2  
Surface: Schott ceramic glass  
Voltage: 115V  
Exterior Height: 2 1/4"  
Exterior Width: 13 3/8"  
Exterior Depth: 20 1/2"  
Cutout Height: 5 3/8"  
Cutout Width: 12 3/8"  
Cutout Depth: 19 7/8"  
ADA Compliant: Yes



## 4-BURNER INDUCTION COOKTOP SINC424220

Burners: 4  
Surface: Schott ceramic glass  
Voltage: 230V  
Exterior Height: 3 1/4"  
Exterior Width: 23"  
Exterior Depth: 20 1/8"  
Cutout Height: 2 1/2"  
Cutout Width: 22 1/8"  
Cutout Depth: 19 3/8"  
ADA Compliant: Yes

*Also available in 30" width*



## 2-BURNER STAINLESS STEEL COOKTOP MADE IN ITALY GC22SS

Burners: 2 sealed  
Surface: Stainless steel  
Convertible to LP gas: Yes  
Exterior Height: 2 1/2"  
Exterior Width: 11 1/2"  
Exterior Depth: 19 1/2"  
Cutout Height: 2 1/2"  
Cutout Width: 11 1/4"  
Cutout Depth: 19"



## 27" 5-BURNER GAS COOKTOP MADE IN ITALY GC5271W (White) GC5272B (Black) GC527SS (Stainless Steel)

Burners: 5 sealed  
Surface: Steel  
Convertible to LP gas: Yes  
Exterior Height: 4"  
Exterior Width: 26 3/4"  
Exterior Depth: 19 3/4"  
Cutout Height: 6"  
Cutout Width: 21 3/4"  
Cutout Depth: 18 3/4"

More Choices Available. View our complete collection at [summitappliance.com](http://summitappliance.com)

# Appliance Specifications - Speed Ovens, Microwaves, & Wall Ovens



## BUILT-IN SPEED OVEN CMV24

Finish: Stainless Steel  
Voltage: 230V  
Exterior Height: 18"  
Exterior Width: 23 1/2"  
Exterior Depth: 21 7/8"  
Cutout Height: 17 5/8"  
Cutout Width: 22"  
Cutout Depth: 21 5/8"

*Available with a trim kit for 27" or 30" wide openings*



## OVER-THE-RANGE MICROWAVE OTRSS301

Finish: Stainless Steel  
Voltage: 115V  
Exterior Height: 16 7/8"  
Exterior Width: 30"  
Exterior Depth: 15 1/2"  
Depth w/Handle: 17 1/2"  
Hood operation: Ducted or ductless



## ELECTRIC WALL OVEN TEM788BKW

Finish: Stainless Steel  
Voltage: 230V  
Exterior Height: 34 1/2"  
Exterior Width: 24"  
Exterior Depth: 24"  
Cutout Height: 34 1/8"  
Cutout Width: 22 3/8"  
Cutout Depth: 23"

*Also available in black and white with a trim kit to raise the height to 39"*



## GAS WALL OVEN TTM721DK

Finish: Black  
Convertible to LP Gas: Yes  
Exterior Height: 34 1/2"  
Exterior Width: 24"  
Exterior Depth: 24"  
Cutout Height: 34 1/8"  
Cutout Width: 22 3/8"  
Cutout Depth: 23"  
Options: Black, Stainless Steel

*Available with a trim kit to raise the height to 39"*



## BUILT-IN MICROWAVE OTR24

Finish: Stainless Steel  
Voltage: 115V  
Exterior Height: 15 1/8"  
Exterior Width: 23 3/8"  
Exterior Depth: 13 3/4"  
Cutout Height: 13 3/4"  
Cutout Width: 22"  
Cutout Depth: 16 1/4"

*Front collar included*



## COMPACT MICROWAVE SCM853

Finish: Stainless Steel  
Voltage: 115V  
Exterior Height: 11"  
Exterior Width: 18 7/8"  
Exterior Depth: 14 1/4"



## ELECTRIC WALL OVEN SEW24SS

Finish: Stainless Steel  
Voltage: 230V  
Exterior Height: 23 1/2"  
Exterior Width: 23 1/4"  
Exterior Depth: 22 1/4"  
Cutout Height: 23 1/8"  
Cutout Width: 22 1/8"  
Cutout Depth: 25"

*Available with a trim kit to raise the height to 39"*



## GAS WALL OVEN WTM7212KW

Finish: White  
Convertible to LP Gas: Yes  
Exterior Height: 34 1/2"  
Exterior Width: 24"  
Exterior Depth: 24"  
Cutout Height: 34 1/8"  
Cutout Width: 22 3/8"  
Cutout Depth: 23"  
Options: Black, Bisque

*Available with a trim kit to raise the height to 39"*



# Appliance Specifications— Range Hoods



## EUROPEAN WALL-MOUNTED RANGE HOOD

### SEH15 Series

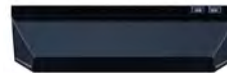
Available Widths: 24", 30", 36"  
Minimum Height: 30"  
Maximum Height: 49"  
Depth: 19 5/8"  
Finish: Stainless steel  
Operation: Ducted or ductless w/filter set  
CFM: 500



## EUROPEAN WALL-MOUNTED RANGE HOOD

### SEH6624C

Available Widths: 24"  
Minimum Height: 29"  
Maximum Height: 41"  
Depth: 21 5/8"  
Finish: Stainless steel  
Operation: Ducted or ductless w/filter set  
CFM: 600



## H16 SERIES CONVERTIBLE BUILDER HOODS

Available Widths: 18", 20", 24", 30", 36", 42", 48"  
Height: 5"  
Depth: 11"  
Finish: White, Black, Bisque, Stainless steel  
Operation: Ducted or ductless  
CFM: 200



## H17 SERIES RECIRCULATING BUILDER HOODS

Available Widths: 18", 20", 24", 30", 36"  
Height: 5"  
Depth: 11"  
Finish: White, Black, Stainless steel  
Operation: Ductless  
CFM: 200



## EUROPEAN WALL-MOUNTED RANGE HOOD

### SEH26 Series

Available Widths: 24", 36"  
Minimum Height: 27 3/4"  
Maximum Height: 45"  
Depth: 19 5/8"  
Finish: Stainless steel  
Operation: Ducted or ductless w/filter set  
CFM: 500



## EUROPEAN WALL-MOUNTED RANGE HOOD

### SEH46 Series

Available Widths: 30", 36", 48"  
Minimum Height: 25"  
Maximum Height: 40"  
Depth: 19 5/8"  
Finish: Stainless steel  
Operation: Ducted or ductless w/filter set  
CFM: 650



## ULT SERIES CONVERTIBLE LOW PROFILE HOODS

Available Widths: 20", 24", 30", 36"  
Height: 8"  
Depth: 19"  
Finish: Stainless steel  
Operation: Ducted or ductless  
CFM: 390



## SHELL SERIES HOODS

Available Widths: 20", 24", 30", 36"  
Height: 5"  
Depth: 11"  
Finish: White, Black, Stainless steel

More Choices Available. View our complete collection at [summitappliance.com](http://summitappliance.com)

# Complete the Look

We offer a wide range of exterior and interior options on our entire line to help ensure each Summit appliance fits our customers' needs.



**PANEL-READY DOORS** Available on most solid door and select glass door units



**PROTECTIVE DOOR TINTS** in a range of colors



**CUSTOM DOOR FINISHES & HANDLE OPTIONS**



# Custom Trim Kits

For the Best Fit



## COOKTOP FRAMES

All Summit cooktops can be ordered with a stainless steel trim kit in any size you choose to best fit your counter cutout.

Visit [summitappliance.com/customtrimkits](http://summitappliance.com/customtrimkits) to learn more.



## WALL OVEN TRIM KITS

RAISE THE HEIGHT OF WALL OVENS WITH OUR TKW700SS



## SPEED OVEN TRIM KITS

FIT THE 24" SPEED OVEN IN A 27" OR 30" OPENING

We are always adding new products and options to ensure our appliances offer the perfect fit for any setting. Browse our entire line at [summitappliance.com](http://summitappliance.com) or call our product specialists at **718-893-3900** to learn more about what we can do for you.





**SUMMIT**  
Micro-Kitchen  
Design Book

Summit Appliance Division, Felix Storch, Inc. ISO 9001:2015 CERTIFIED  
770 Garrison Avenue, Bronx, NY 10474 USA • TEL 718.893.3900 • FAX 844.478.8799 • info@summitappliance.com • summitappliance.com