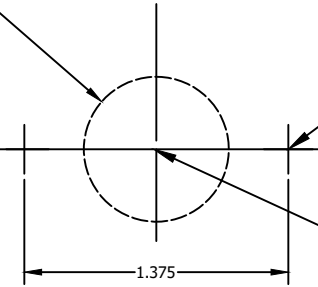


DRILL 0.750 (3/8) HOLE



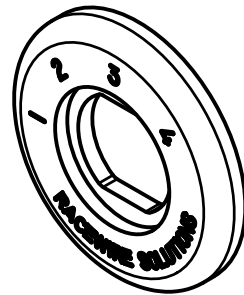
RWS-SELECTOR - MOUNTING TEMPLATE

- STEP 1 - CENTER PUNCH 2 MOUNTING HOLES AS MARKED.
- STEP 2 - CENTER PUNCH CENTER OF 0.75" HOLE
- STEP 3 - DRILL 2 MOUNTING HOLES WITH A 3/16" DRILL BIT.

STEP 4 - DRILL A 1/8" HOLE IN THE CENTER (TO BE USED FOR CENTERING HOLE SAW)

STEP 5 - USE A 0.750 (3/8) HOLE SAW OR DRILL BIT AND CENTER IT ON THE 1/8" HOLE IN MIDDLE

STEP 6 - USE SUPPLIED HARDWARE AND MOUNT PLATE TO DASH/MOUNTING SURFACE



TITLE: RWS HOLLEY SELECTOR PLATE	
<small>PROPRIETARY AND CONFIDENTIAL THE INFORMATION CONTAINED HEREIN IS THE SOLE PROPERTY OF PACEMAN SOLUTIONS LLC. ANY REPRODUCTION OR PART, OR AS A WHOLE, WITHOUT THE WRITTEN PERMISSION OF PACEMAN SOLUTIONS LLC IS PROHIBITED.</small>	
DWG NO. RWS-SELECTOR.dwg	REV 0
DWG BY: EMB	DATE: 4/24/2019
SHEET B	SCALE 2/1 SHEET NO: 1 OF 1