

## Waterproof Anti-Adhesion Wound Dressing With PU Foam (Sterile)

Please read the product manual before use and follow the instructions.

### Product Description

The Motif Heal Waterproof Anti-Adhesion Wound Dressing With PU Foam is a revolutionary wound dressing which was developed for the annoying problems of dressing (sticking, allergies, etc.). The PU foam with comfortable and hypoallergenic characteristics can directly cover on the wound to absorb wound exudate. This design is more conducive to wound observation and know the timing of replacement. The whole product design is comfortable, hypoallergenic, anti-adhesive to wound and prevents the intrusion of moisture and bacteria from invading to give a good care to the wound.

### Intended Use

Waterproof Anti-Adhesion Wound Dressing With PU Foam is designed for a wide range of exuding wounds such as medical cosmologic surgery, general surgery, caesarean section, general trauma, cuts, initial pressure ulcers and mild exudate wounds.

### Composition

Polyurethane Foam, polyurethane film, medical grade pressure sensitive adhesive, release paper.

### Instructions for use

1. The Foam size should be larger than 1 cm around the wound.
2. Trim any excess hair around the wound area, to ensure proper adhesion. and improved comfort.
3. Clean the wound in accordance with normal procedures.
4. Dry the surrounding skin thoroughly.

### Specification

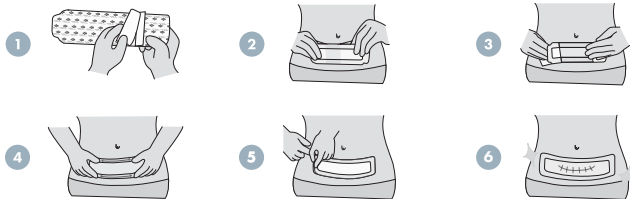
| Item | Foam size | Film size |
|------|-----------|-----------|
| 1    | 3x3 cm    | 5x5 cm    |
| 2    | 3x8 cm    | 6x12 cm   |
| 3    | 3x12 cm   | 6x16 cm   |
| 4    | 3x17 cm   | 6x21 cm   |
| 5    | 4x21 cm   | 8x25 cm   |

### How do I apply the wound dressing correctly?

Step 1: Carefully remove the dressing from sterile packaging, and remove the release paper.

Step 2: Check the dressing alignment with the wound, and then with two fingers gently push outwards from the center of the dressing.

Step 3: Remove the upper release paper, and gently press the dressing at the center and the four corners to ensure adherence.



### How do I remove the wound dressing correctly?

When removing, gently press the dressing with one hand, and straighten out with a hand to extend straightly so that the film is separated from the skin surface. In this way, the dressing can be slowly removed while pressing. Please use sterile saline solution to help removing when necessary.

## Contraindications

1. Do not use and discontinue use on people who show signs of sensitivity, irritation, or allergy from the dressing or its materials.
2. Do not use with alcohol or povidone-iodine at the same time.
3. Do not use when there is no exudate from the wound.

## Precautions

1. This product is for external use only. Please read the product manual before use.
2. The product is sterilized. Do not use if inner package is damaged or opened prior to use.
3. Intended for one time use per person. Do not reuse. Reuse may spread contamination, and increase risk of infection.
4. If the dressing is damaged, peeled or contaminated, please change the dressing immediately.
5. If the patient has a weakened immune system, diabetes, or a wound infection, change the dressing frequently.
6. When using Waterproof Anti-Adhesion Wound Dressing With PU Foam, it is ok to take a bath, but the edges of the dressing need to be pressed and tightly attached to the skin to prevent water penetration and moisture permeability.
7. If swallowed inadvertently, it may cause obstruction of the digestive tract and need to be treated immediately.
8. If the wound is red, hot, swollen, painful, allergic or uncomfortable when using this dressing, stop using it immediately and seek medical advice.
9. This product must be stored in a cool dry place, avoid sunlight.
10. When the edge of the product is not sticky due to friction or curling, it is normal.

## Timing of use

### Precautions

If there is presence of diabetes, cancer, or autoimmune disease, the wound will recover more slowly. Please make sure that there is no discharge or clear liquid (exudate) on the wound before moving on to the Stage2(Surgical Hydrogel Patch).

### Timing of use

- a. It is recommended to change the dressing once a day until no discharge or clear liquid (exudate) is present.
- b. The outer layer is a waterproof material, which can be used while showering, doing light yoga, or other sports. However, avoid strenuous exercise or sweating heavily.



take a shower



light yoga



avoid swimming



avoid going to  
a hot tub

- c. If you sweat heavily after exercising, please change the dressing immediately. Too much moisture will reduce the adhesiveness of the dressing.



### Manufactured For:

Motif Medical, LLC

Dover, DE 19901

Made in Taiwan