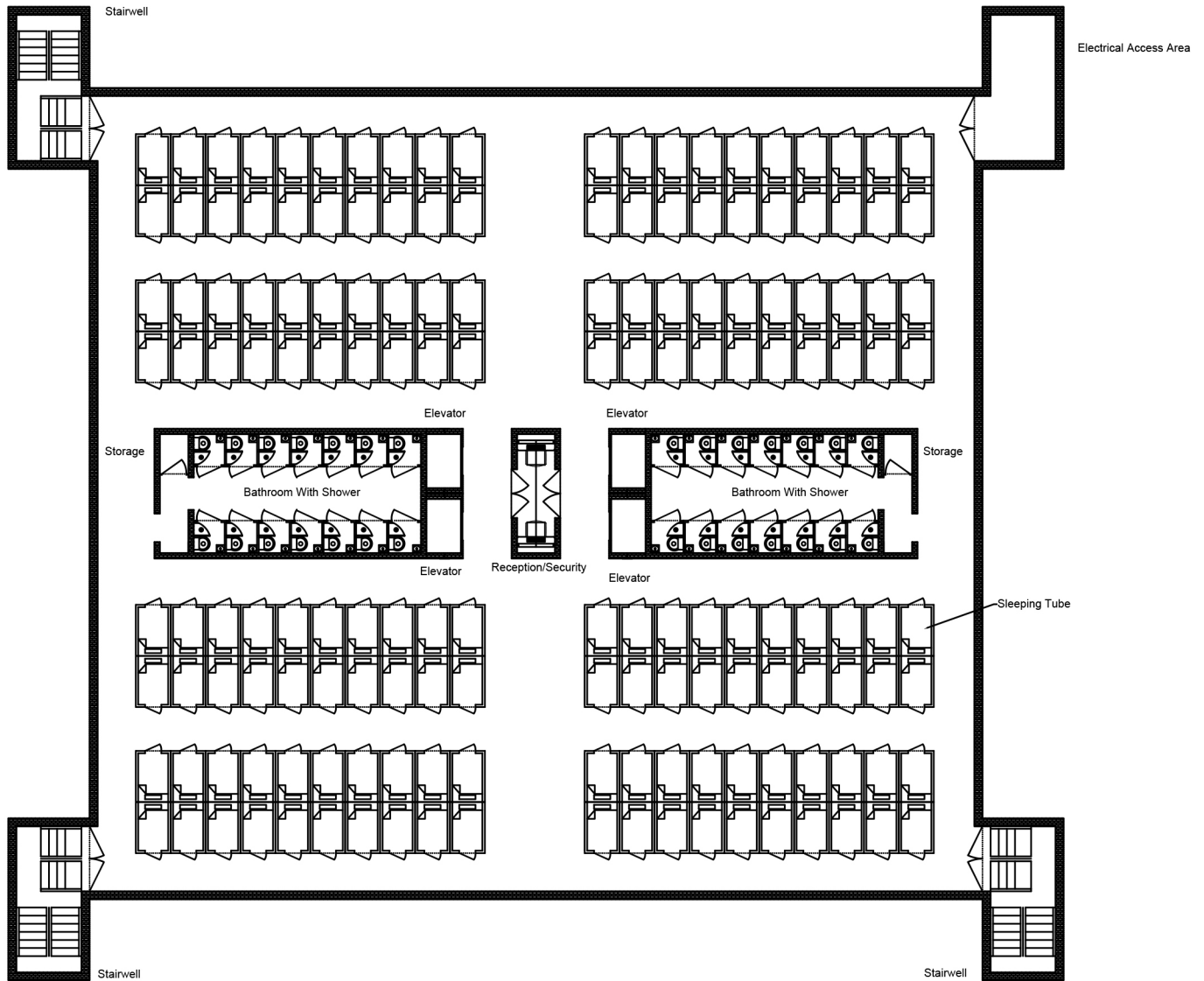




SLEEPING CAPSULES

Proposal



SLEEPING TUBES HOTEL/HOMELESS SHELTER **IC3 Drawing One**

NOTES:

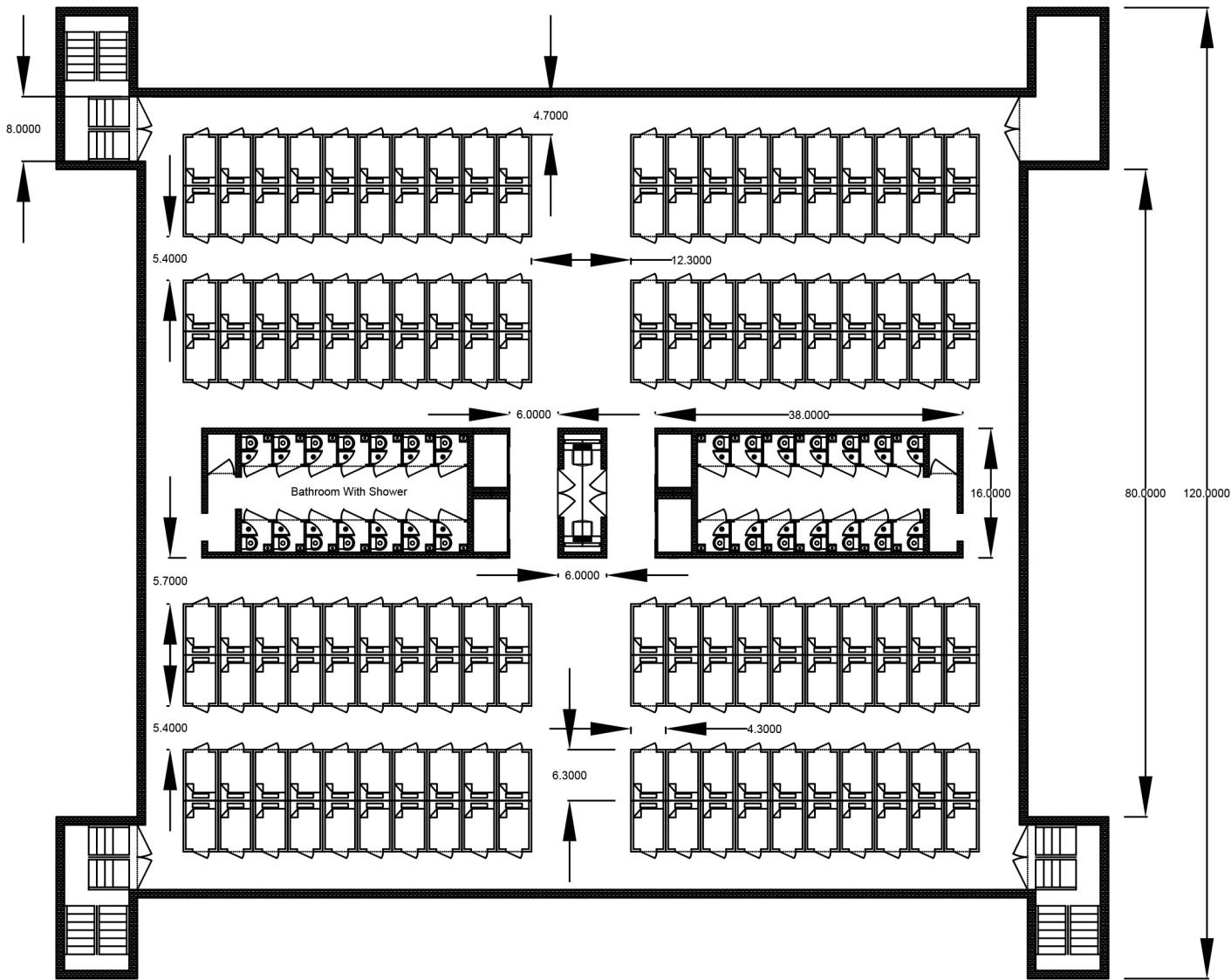
- 1) 320 sleeping tubes stack 2 high
- 2) 28 bathroom/shower combinations
- 3) 4 elevators and 3 stairwells
- 4) 6 stories high building



Don Harris
(323)839-5012

DATE: 1/22/20

Draftman: Shane McNeil
(424)414-9700



SLEEPING TUBES HOTEL/HOMELESS SHELTER

IC3 Drawing Two

NOTES:

- 1) 320 sleeping tubes stack 2 high
- 2) 28 bathroom/shower combinations
- 3) 4 elevators and 3 stairwells
- 4) 6 stories high building



Inner City Cycling Connection

Don Harris
(323)839-5012

DATE: 1/22/20

Draftman: Shane McNeil
(424)414-9700

**INNER CITY CYCLING
 CONNECTION, INC.
 HOMELESS
 REHABILITATION
 CENTER & SHELTER**

SLEEPING TUBES HOTEL/HOMELESS SHELTER

IC3 Drawing 3

NOTES:

- 1) 320 sleeping tubes stack 2 high
- 2) 28 bathroom/shower combinations
- 3) 4 elevators and 3 stairwells
- 4) 6 stories high building

**Don Harris
 (323)839-5012**

DATE: 1/22/20

Draftman: Shane McNeil
 (424)414-9700



Inner City Cycling Connection