

Figure 15—Fuselage Frame—Covering and Covering Installation

RESTRICTED
AN 01-70AC-4

Section II—Group Assembly Parts List

FIG. NO.	INDEX NO.	STOCKED	GROUP BODY						UNITS PER ASSY	PROPERTY CLASSIFICATION						
			MAJOR ASSEMBLY FUSELAGE ASSEMBLY—COMPLETE (75-2100)							U. S. NAVY	U. S. ARMY	BRITISH				
			PART NUMBER	1	2	3	4	5					6	NOMENCLATURE		
16	8		75-2132-3							1		01-P				
			75-2161								1		01-P			
			75-2161-1									1		01-P		
			75-2148-1									1		01-P		
			75-2148-2									1		01-P		
			75-2120									2		01-P		
			75-2135									2		01-P		
			75-2139-5									2		01-P		
			75-2139-2									1		01-P		
			75-2101-88									2		01-P		
			75-2117-4									1		01-P		
			75-2101-72									1		01-P		
			75-2117-5									1		01-P		
			75-2101-70									1		01-P		
			75-2115									1		01-P		
			75-2115-1									1		01-P		
			75-2115-2									2		01-P		
			75-2115-2									2		01-P		
			75-2101-68									1		01-P		
			E75N1-2105									1		01-P		
			75-2119									2		01-P		
			75-2139-1									1		01-P		
			16	9		75-2142-1							1		01-P	
			16	10		75-2142-2							1		01-P	
			16	11		75-2101-78							1		01-P	
						75-2101-74							1		01-P	
			75-2101-75							1		01-P				
			75-2125							1		01-P				
16	12		75-2162							1		01-P				
	12		75-2162-2							1		01-P				
			75-2101-79							1		01-P				
			75-2140							1		01-P				
			75-2144							2		01-P				
			75-2123							1		01-P				
			75-2124							1		01-P				
			75-2121-1							2		01-P				
			75-2121-2							4		01-P				
			75-2101-76							1		01-P				
16	13		E75-2111							1		01-P				

RESTRICTED
AN 01-70AC-4

Section II—Group Assembly Parts List

FIG. NO.	INDEX NO.	STOCKED	GROUP BODY						UNITS PER ASSY	PROPERTY CLASSIFICATION		
			MAJOR ASSEMBLY FUSELAGE ASSEMBLY—COMPLETE (75-2100)							U.S. NAVY	U.S. ARMY	BRITISH
			PART NUMBER	1	2	3	4	5				
16	14	75-2128							2		01-P	
		75-2122-2							2		01-P	
		75-2101-77							1		01-P	
		75-2137-5							1		01-P	
		75-2137-6							1		01-P	
		75-2137-4							1		01-P	
64(1)	2	A75N1-4543						8		01-P		
		75-2111						3		01-P		
17(1)	1	75-2500						1		01-P		
17(1)	2	73-2131-1						4		01-P		
		AN310-7						4		04-A		
		AN960-716						4		04-A		
Note												
Listed below is a specially fabricated repair assembly made available to maintenance personnel to simplify the repair of damaged fuselage frames at Stations 1 and 2 Lower. This breakdown does not follow the sequence of assembly as does regular Group Assembly Parts List; however it is procurable as a unit.												
16	15	E75-2101S							1		01-P	
	15	E75-2101S-1							1		01-P	
		75-2101-60							1		01-P	
		75-2101-61						1		01-P		
16	4	75-2163							1		01-P	
	4	75-2163-1							1		01-P	
		75-2101-57							1		01-P	
		75-2101-58							1		01-P	
		75-2112							1		01-P	
		75-2156-3							1		01-P	
		75-2156-2							1		01-P	
		75-2154-1							1		01-P	
		75-2154-2							1		01-P	
		75-2154-3							1		01-P	
		75-2154-4							1		01-P	
	75-2111							2		01-P		
	75-2111							1		01-P		

RESTRICTED

RESTRICTED
AN 01-70AC-4

Section II—Group Assembly Parts List

FIG. NO.	INDEX NO.	STOCKED	GROUP BODY						UNITS PER ASSY	PROPERTY CLASSIFICATION		
			MAJOR ASSEMBLY FUSELAGE ASSEMBLY—COMPLETE (75-2100)							U.S. NAVY	U.S. ARMY	BRITISH
			PART NUMBER	1	2	3	4	5				
			75-2135						1		01-P	
			E75-2101S-2						1		01-P	
			E75-2101S-3						1		01-P	
			E75-2101S-4						1		01-P	
			75-2106						1		01-P	
			75-2148-1						1		01-P	
			75-2148-2						1		01-P	

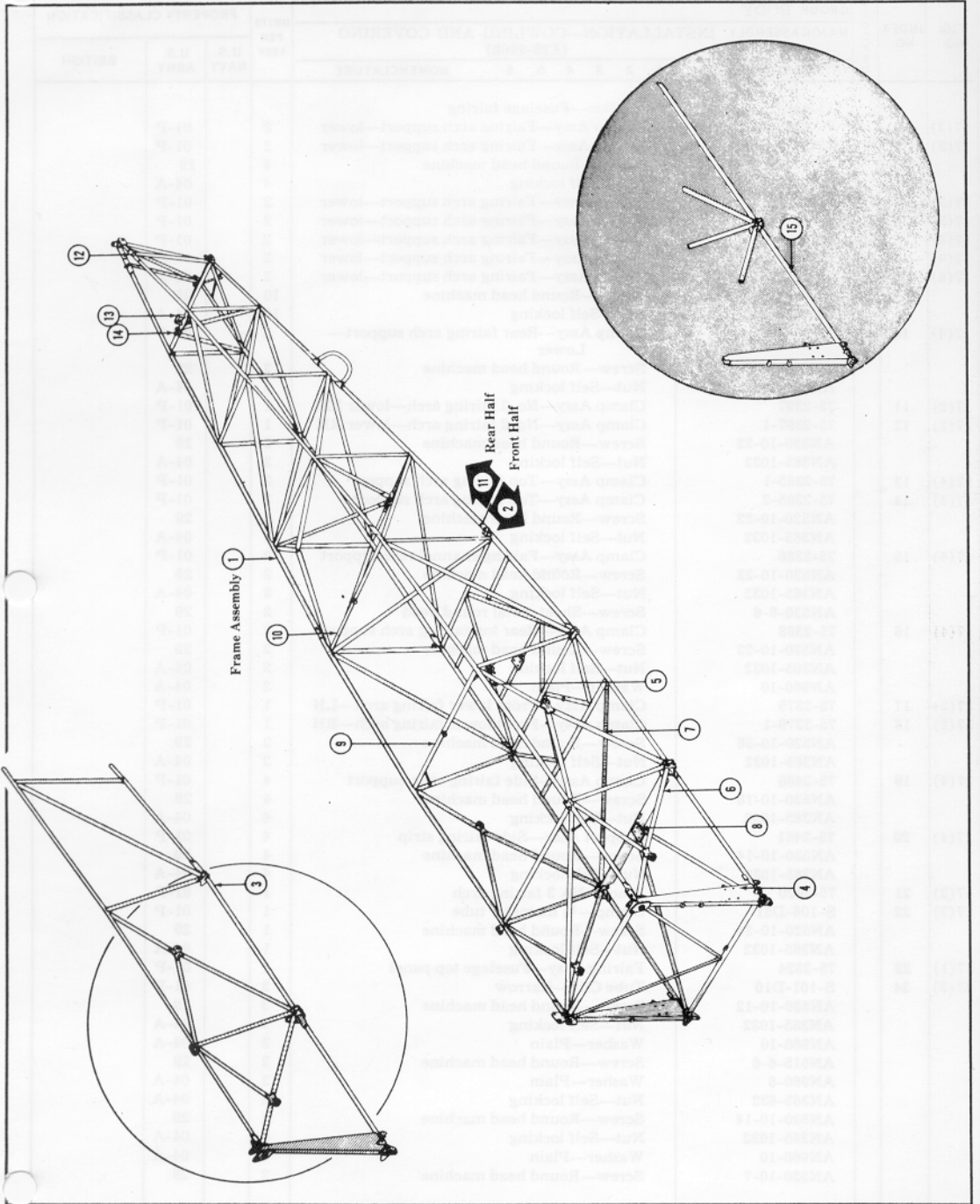


Figure 16—Fuselage Frame Assembly

**RESTRICTED
AN 01-70AC-4**

Section II—Group Assembly Parts List

FIG. NO.	INDEX NO.	STOCKED	GROUP BODY						UNITS PER ASSY	PROPERTY CLASSIFICATION		
			MAJOR ASSEMBLY INSTALLATION—COWLING AND COVERING (E75-2308)							U.S. NAVY	U.S. ARMY	BRITISH
			PART NUMBER	1	2	3	4	5				
17(1)	25		75-2323						1		01-P	
			AN520-10-6						2		29	
			AN365-1032						20		04-A	
			AN520-10-14						16		29	
			AN960-10						16		04-A	
			AN520-10-7						2		29	
17(1)	26		B75-2302-2						1		01-P	
17(1)	27		B75-2302-3						1		01-P	
			B75-2302						1		01-P	
			B75-2302-1						1		01-P	
17(1)	28		75-2462						1		01-P	
			AN960-10						2		04-A	
			AN526-1032-16						2		29	
			AN365-1032						2		04-A	
17(2)	29		S-110-D51						2		01-P	
			AN520-10-30						2		29	
			AN365-1032						2		04-A	
			AN960-10						2		04-A	
17(2)	30		S-101-18F						1		01-P	
			AN520-10-10						1		29	
			AN365-1032						1		04-A	
17(2)	31		AN960-10						1		04-A	
			S-109-D51						9		01-P	
			AN520-10-28						9		29	
			AN365-1032						9		04-A	
17(3)	32		AN960-10						9		04-A	
			S-107-D51						8		01-P	
			AN520-10-24						8		29	
			AN365-1032						8		04-A	
			AN960-10						8		04-A	
17(2)	33		73-2331-1						1		01-P	
17(2)	34		73-2331-2						1		01-P	
17(3)	35		73-2331-3						1		01-P	
17(3)	36		73-2331-4						1		01-P	
			AN520-10-8						6		29	
			AN365-1032						6		04-A	
			AN960-10						6		04-A	
17(3)	37		75-2321-15						2		01-P	
			AN515-4-4						8		29	
			AN365-440						8		04-A	
			AN526-1032-6						2		29	
			AN365-1032						2		04-A	
			AN520-10-6						2		29	
			AN520-10-7						2		29	
			AN520-10-14						17		29	
			AN365-1032						21		04-A	
			AN960-10						16		04-A	
			E75-2303						1		01-P	
			E75N1-2307						1		01-P	
			S-117-30						3		01-P	
17(1)	38		75-2382						1		01-P	
17(1)	39		75-2383						1		01-P	
			AN526-1032-7						5		29	
17(1)	40		75-2384						1		01-P	
			AN526-1032-7						3		29	

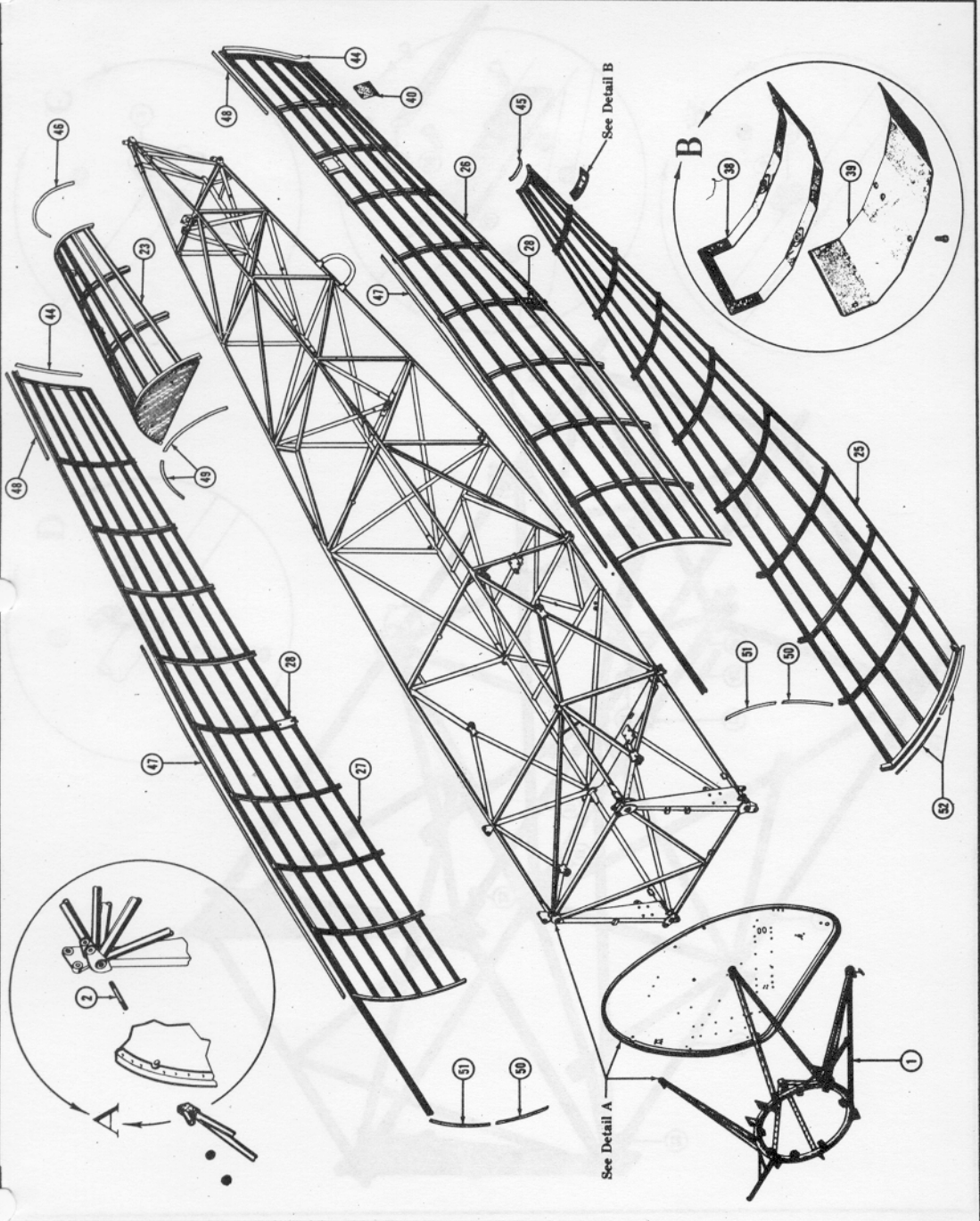


Figure 17—Fuselage Fairing and Covering Installation (Sheet 1 of 4 sheets)

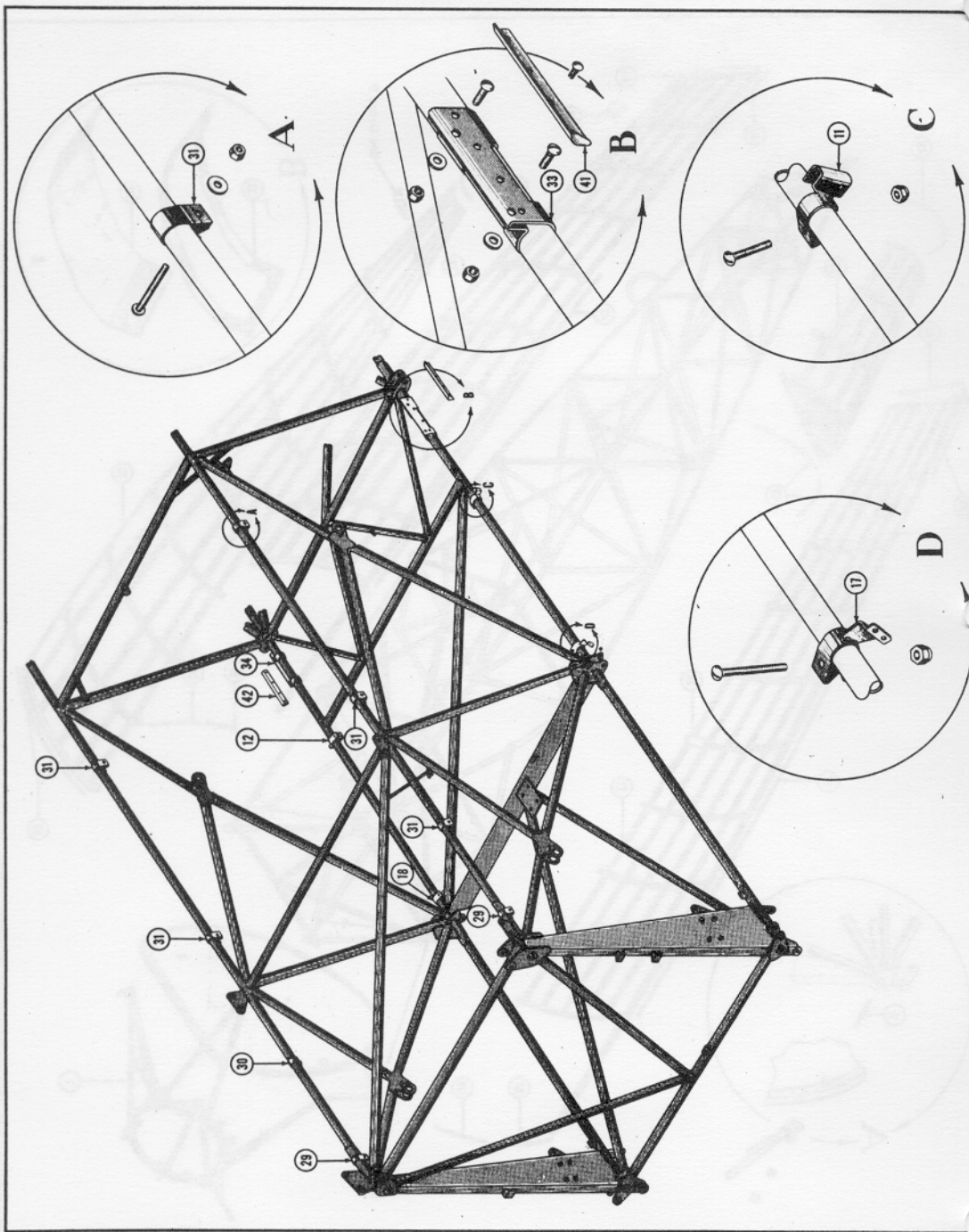


Figure 17—Fuselage Fairing and Covering Installation (Sheet 2 of 4 sheets)

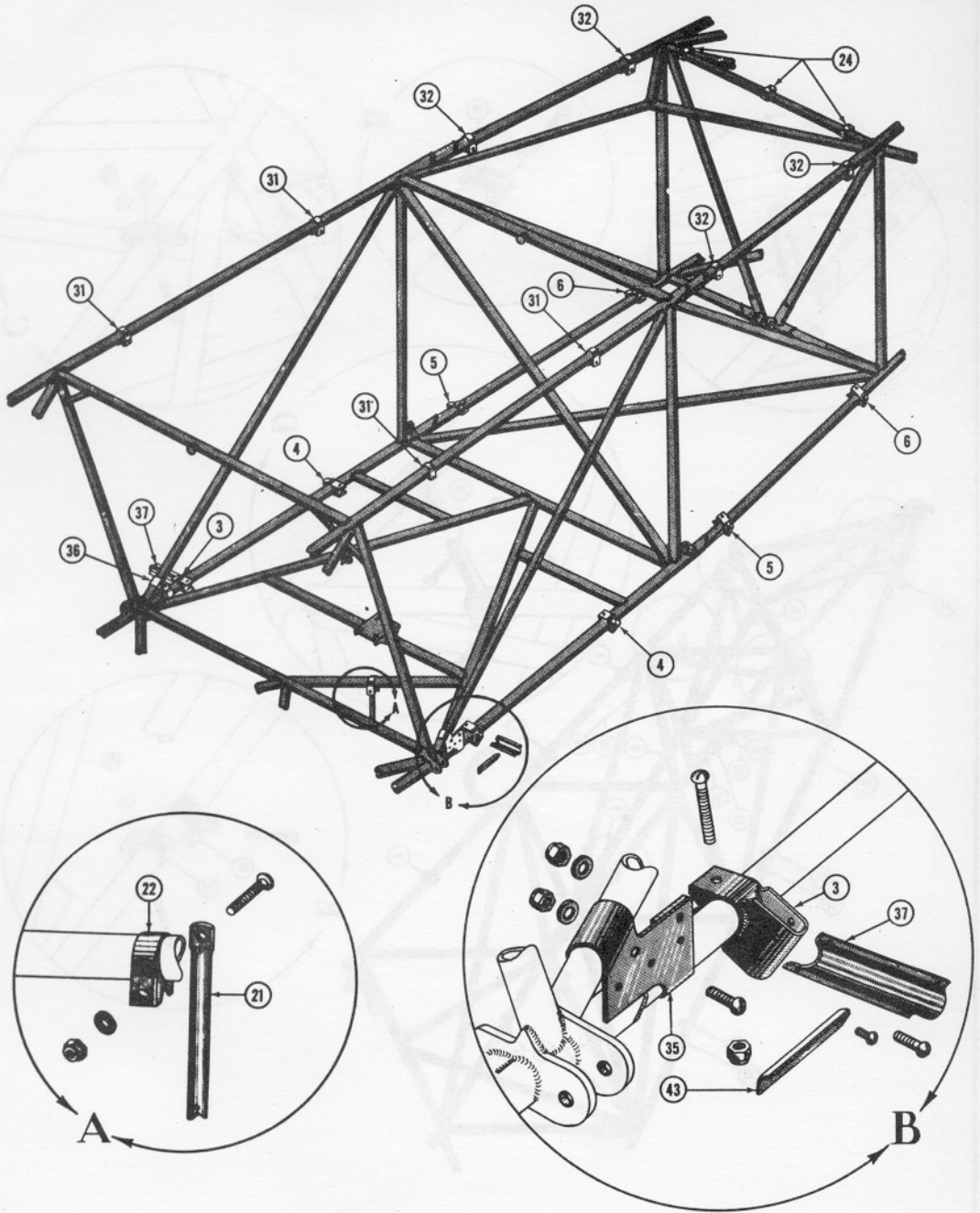


Figure 17—Fuselage Fairing and Covering Installation (Sheet 3 of 4 sheets)

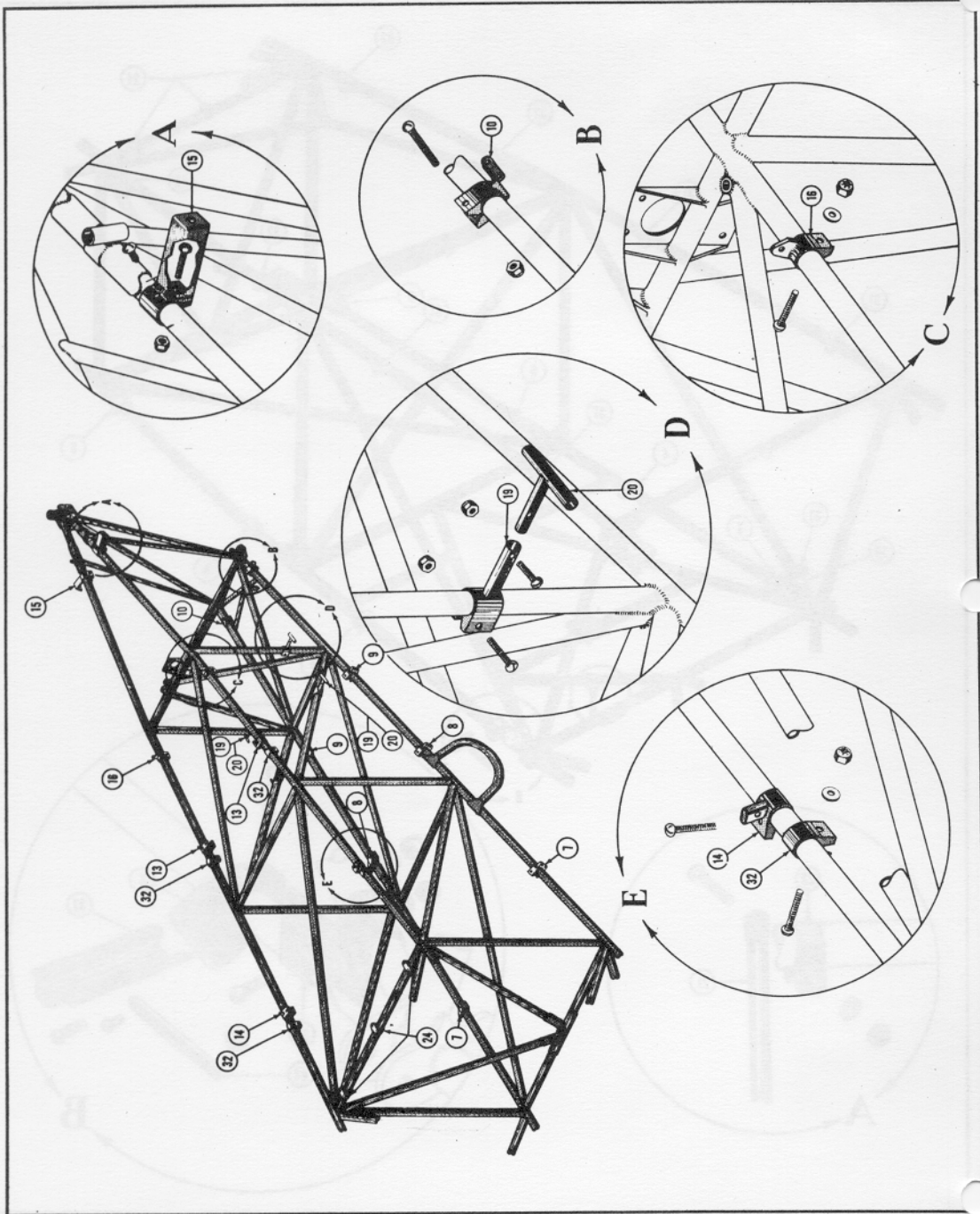


Figure 17—Fuselage Fairing and Covering Installation (Sheet 4 of 4 sheets)

RESTRICTED
AN 01-70AC-4

Section II—Group Assembly Parts List

FIG. NO.	INDEX NO.	SYMBOL	GROUP BODY						UNITS PER ASSY	PROPERTY CLASSIFICATION					
			MAJOR ASSEMBLY INSTALLATION—COWLING AND COVERING (E75-2308)							U. S. NAVY	U. S. ARMY	BRITISH			
			PART NUMBER	1	2	3	4	5					6	NOMENCLATURE	
18(1)	1		E75N1-2302									Installation—Fuselage cowl	1		01-P
			75-2368-2									Bulkhead Assy—Cockpit cowl rear	1		01-P
18(1)	2		B75-2305									Bulkhead Assy—Cockpit cowl front	1		01-P
18(1)	3		S-110-D51									Clamp—1¼ in. diameter tube	4		01-P
			AN520-10-30									Screw—Round head machine	4		29
			AN960-10									Washer—Plain	8		04-A
			AN365-1032									Nut—Self-locking	4		04-A
18(1)	4		B75-2306									Door—Instrument inspection	1		01-P
			AN526-1032-6									Screw—Truss head	7		29
18(1)	5		E75-2366									Roll Assy—Front cockpit rear	1		01-P
18(1)	6		E75-2365									Roll Assy—Rear cockpit rear	1		01-P
18(1)	7		75-2359									Cowl Assy—Baggage compartment	1		01-P
			AN526-1032-7									Screw—Truss head	14		29
			AN526-1032-8									Screw—Truss head	4		29
			AN526-1032-6									Screw—Truss head	4		29
			AN960-10									Washer—Plain	2		04-A
			AN365-1032									Nut—Self locking	2		04-A
18(1)	8		75-2358									Door Assy—Baggage compartment	1		01-P
			AN415-27									Pin—Lock	1		04-A
			AN526-1032-8									Screw—Truss head	2		29
			AN365-1032									Nut—Self locking	2		04-A
18(1)	9		75-2400									Support—Baggage compartment door folding	1		01-P
			75-2400-1									Arm	1		01-P
			75-2400-2									Arm	1		01-P
			75-2400-4									Bushing	1		01-P
			AN520-10-9									Bolt—Round head machine	1		29
			AN960-10									Washer—Plain	2		04-A
			AN365-1032									Nut—Self locking	1		04-A
18(1)	10		75-2429									Spacer—Baggage compartment door brace	2		01-P
			AN526-1032-8									Screw—Truss head	2		29
			75-2398									Plate—Baggage compartment door filler	1		01-P
18(1)	11		75-2356									Cowl Assy—Rear cockpit LH	1		01-P
18(1)	12		75-2356-1									Cowl Assy—Rear cockpit RH	1		01-P
			AN526-1032-7									Screw—Truss head	12		29
			AN526-1032-8									Screw—Truss head	4		29
			AN526-1032-10									Screw—Truss head	2		29
			AN960-10									Washer—Plain	2		04-A
			AN940-8									Washer—Burr	1		29
			AN365-1032									Nut—Self locking	2		04-A
18(1)	13		E75-2364									Roll Assy—Rear cockpit forward	1		01-P
18(1)	14		75-2355									Cowl—Intercockpit	1		01-P
			AN526C1032-8									Screw—Truss head	2		29
			AN526-1032-8									Screw—Truss head	17		29
			AN526-1032-7									Screw—Truss head	2		29
			AN960C10									Washer—Plain	2		04-A
			AN365D1032									Nut—Self locking	2		04-A
18(1)	15		75-2354									Cowl Assy—Front cockpit LH	1		01-P
18(1)	16		75-2354-1									Cowl Assy—Front cockpit RH	1		01-P
			AN526-1032-7									Screw—Truss head	8		29
			AN526-1032-8									Screw—Truss head	8		29
			AN526-1032-10									Screw—Truss head	2		29
			E75N1-2302-3									Strip—Felt press	4		01-P
18(1)	17		E75N1-2302-2									Roll	4		01-P
18(1)	18		E75N1-2302-1									Thong	4		01-P
18(1)	19		E75N1-2310									Firewall Assembly	1		01-P
18(1)	20		S-122									Grommet—1½ in. closed round	2		01-P
18(2)	21		75-2361									Clamp Assy—Cowl support bulkhead LH	1		01-P
	21		75-2361-1									Clamp Assy—Cowl support bulkhead RH	1		01-P

RESTRICTED

RESTRICTED
AN 01-70AC-4

Section II—Group Assembly Parts List

FIG. NO.	INDEX NO.	SYMBOL	GROUP BODY						UNITS PER ASSY	PROPERTY CLASSIFICATION		
			MAJOR ASSEMBLY INSTALLATION—COWLING AND COVERING (E75-2308)							U.S. NAVY	U.S. ARMY	BRITISH
			PART NUMBER	1	2	3	4	5				
18(2)	22		AN3-15						2		04-A	
			AN310-3						2		04-A	
		AN380-2-2						2		29		
		75-2341						1		01-P		
	22		75-2341-1					1		01-P		
18(1)	23		AN520-10-10						4		29	
			AN960-10						8		04-A	
18(1)	24		AN365-1032					4		04-A		
			75-2319					1		01-P		
			75-2319-1					1		01-P		
			75-2319-9					1		01-P		
			75-2319-10					1		01-P		
			AN931-8-13					2		04-B		
			AN510-10-8					4		29		
			AN526-1032-8					2		29		
			AN526-1032-7					6		29		
			AN960-10					6		04-A		
			AN365-1032					6		04-A		
20	8		75-2416					6		01-P		
			AN520-10-8					12		29		
			AN960-10					36		04-A		
			AN365-1032					12		04-A		
20	9		S6-425					6		04-A		
			AN505-4-6					12		29		
			AN365B440					12		04-A		
18(1)	25		75-2317					1		01-P		
18(1)	26		75-2317-1					1		01-P		
18(1)	27		E75-2363					1		01-P		
18(1)	28		75-2336					2		01-P		
			AN526-1032-8					2		29		
18(1)	29		E75N1-2305					1		01-P		
			E75N1-2305-1					1		01-P		
			AN931-8-13					4		04-B		
			AN526C1032-8					3		29		
			AN526-1032-8					30		29		
18(1)	30		E75N1-2302-18					2		01-P		
18(1)	31		E75N1-2302-17					4		01-P		
18(1)	32		75-2377					1		01-P		
			75-2377-1					1		01-P		
18(1)	33		75-2378-1					1		01-P		
18(1)	34		75-2378-2					2		01-P		
			AN515-8-8					4		29		
			AN526-1032-8					8		29		
			AN960-10					8		04-A		
			AN365-1032					8		04-A		
			AN526C1032-8					3		29		
			AN960C10					3		04-A		
			AN365D1032					3		04-A		
18(1)	35		75-2377-2					1		01-P		
			75-2377-1					1		01-P		
18(1)	33		75-2378-1					1		01-P		
18(1)	34		75-2378-2					2		01-P		
18(1)	36		75-2434					1		01-P		
			AN515-8-8					2		29		
			AN515-8-10					2		29		
			AN526-1032-8					8		29		
			AN960-10					8		04-A		
			AN365-1032					8		04-A		

RESTRICTED
AN 01-70AC-4

Section II—Group Assembly Parts List

FIG. NO.	INDEX NO.	STOCK #	GROUP BODY						UNITS PER ASSY	PROPERTY CLASSIFICATION		
			MAJOR ASSEMBLY INSTALLATION—COWLING AND COVERING (E75-2308)							U.S. NAVY	U.S. ARMY	BRITISH
			PART NUMBER	1	2	3	4	5				
18(2)	37		AN526C1032-8						1		29	
			AN526C1032-10							2		29
18(2)	38		AN960C10						3		04-A	
			AN365D1032							3		04-A
18(2)	39		75-2343						2		01-P	
			75-2406							2		01-P
18(2)	40		75-2406-1						2		01-P	
			AN520-10-8							14		29
18(2)	41		AN520-10-12						2		29	
			AN960-10							22		04-A
18(2)	42		AN365-1032						16		04-A	
			75-2405							1		01-P
18(2)	43		75-2405-1						1		01-P	
			75-2407							1		01-P
18(2)	44		75-2407-1						1		01-P	
			AN520-10-8							6		29
18(2)	45		AN960-10						12		04-A	
			AN365-1032							6		04-A
18(2)	46		75-2344						2		01-P	
			75-2342							2		01-P
18(2)	47		75-2342-1						2		01-P	
			AN520-10-8							14		29
20	8		AN520-10-12						2		29	
			AN960-10							30		04-A
20	9		AN365-1032						16		04-A	
			75-2416							7		04-A
18(1)	45		AN520-10-8						12		29	
			AN520-10-10							2		29
18(1)	46		AN960-10						14		04-A	
			AN365-1032							14		04-A
20	8		S6-425						7		04-A	
			AN505-4-6							14		29
18(1)	45		AN365B440						14		04-A	
			75-2413							1		01-P
18(1)	46		75-2413-1						1		01-P	
			75-2411							1		01-P
20	8		75-2411-1						1		01-P	
			75-2416							3		01-P
20	8		AN520-10-9						4		29	
			AN520-10-10							2		29
20	8		AN960-10						12		04-A	
			AN365-1032							6		04-A
20	8		S6-425						3		04-A	
			AN505-4-6							6		29
20	8		AN365B440						6		04-A	
			AN520-10-10							4		29
20	8		AN520-10-8						4		29	
			AN960-10							14		04-A
20	8		AN365-1032						6		04-A	

RESTRICTED
AN 01-70AC-4

Section II—Group Assembly Parts List

FIG. NO.	INDEX NO.	STOCK E D	GROUP BODY						UNITS PER ASSY	PROPERTY CLASSIFICATION				
			MAJOR ASSEMBLY INSTALLATION—COWLING AND COVERING (E75-2308)							U.S. NAVY	U.S. ARMY	BRITISH		
			PART NUMBER	1	2	3	4	5					6	NOMENCLATURE
18(2)	47		AN3-15							2		04-A		
			AN310-3								2		04-A	
	AN380-2-2										2		29	
	75-2340									1		01-P		
	75-2340-1									1		01-P		
	AN526-1032-7										24		29	
	AN526-1032-8										2		29	
	AN526-1032-6										2		29	
	AN960-10										10		04-A	
	AN365-1032										10		04-A	
18(2)	48		AN931-16-22							2		04-B		
			75-2346							1		01-P		
48	75-2346-1		Fairing Assy—Upper outside landing gear LH							1		01-P		
			Fairing Assy—Upper outside landing gear RH								1		01-P	
18(2)	49		AN526-1032-7								8		29	
			AN526-1032-6								2		29	
			AN526-1032-4								2		29	
			75-2346-6								1		01-P	
18(2)	49		75-2346-7								1		01-P	
			AN415-8								2		04-A	
18(2)	50	75-2346-12								1		01-P		
		50	75-2346-13	Fairing Assy—Upper outside landing gear rear LH							1		01-P	
Fairing Assy—Upper outside landing gear rear RH										1		01-P		
18(2)	51	AN526-1032-7								18		29		
		AN526-1032-6								2		29		
		AN960-10								2		04-A		
		AN365-1032								2		04-A		
		75-2338								1		01-P		
		75-2338-1								1		01-P		
18(2)	52	AN415-8								2		04-A		
		E75N1-2302-16								2		01-P		
18(2)	53	AN550-8-6								4		29		
		75-2404								2		01-P		
18(1)	54	AN545-8-5								4		29		
		75-2412								1		01-P		
18(2)	55	75-2409								2		01-P		
18(2)	56	E75N1-2348								1		01-P		
		E75N1-2348-1								1		01-P		
		AN526-1032-7								38		29		

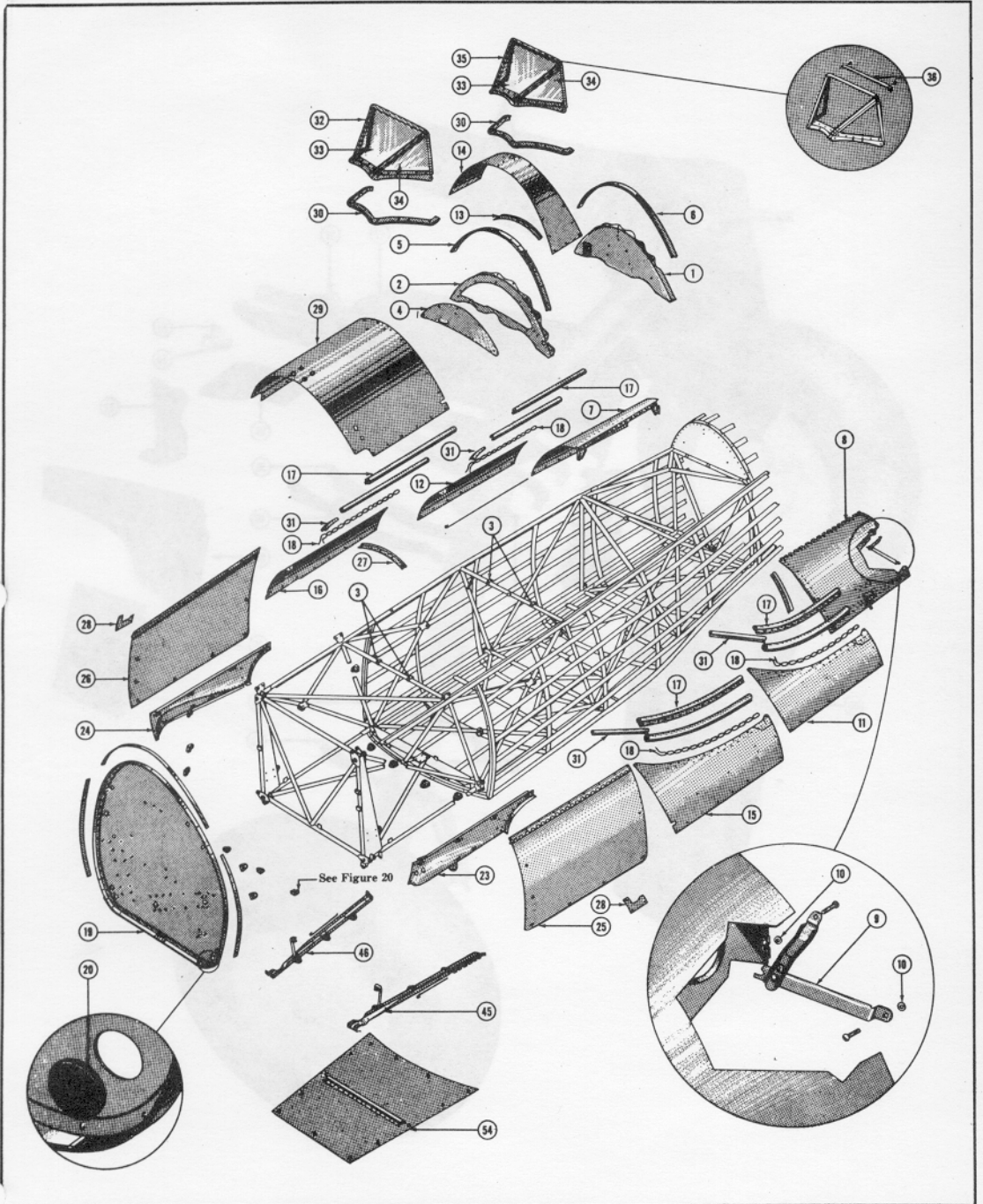


Figure 18—Fuselage Cowl Installation (Sheet 1 of 2 sheets)



Figure 18—Fuselage Cowl Installation (Sheet 2 of 2 sheets)

RESTRICTED
AN 01-70AC-4

Section II—Group Assembly Parts List

FIG. NO.	INDEX NO.	STOCKED	GROUP BODY						UNITS PER ASSY	PROPERTY CLASSIFICATION		
			MAJOR ASSEMBLY INSTALLATION—COWLING AND COVERING (E75-2308)							U.S. NAVY	U.S. ARMY	BRITISH
			PART NUMBER	1	2	3	4	5				
19	1		E75-2311						1		01-P	
			75-2314						1		01-P	
19	2		75-2315						1		01-P	
			AN4-16						4		04-A	
			AN960-416						8		04-A	
			AN380-4						4		04-A	
			AN380-2-2						4		29	
19	3		75-2422-1						1		01-P	
19	4		75-2422-2						1		01-P	
19	5		75-2422-3						1		01-P	
			AN526-1032-7						8		29	
			AN510-10-7						2		29	
			AN960-10						10		04-A	
			AN365-1032						10		04-A	
			AN4-5						12		04-A	
			AN960-416						12		04-A	
			AN310-4						12		04-A	
			AN380-2-2						12		29	
19	6		75-2308						1		01-P	
			AN526-1032-7						6		29	
			AN960-10						6		04-A	
			AN365-1032						6		04-A	
19	7		75-2423						1		01-P	
19	8		75-2423-1						1		01-P	
			75-2423-5						1		01-P	
19	9		E75-2310-1						1		01-P	
19	10		75-2424						1		01-P	
19	11		75-2424-1						1		01-P	
			AN415-19						2		04-A	
19	12		E75-2309						1		01-P	
			E75-2309-2						1		01-P	
			AN931-7-11						1		04-B	
			AN931-9-13						1		04-B	
19	13		E75-2310-2						1		01-P	

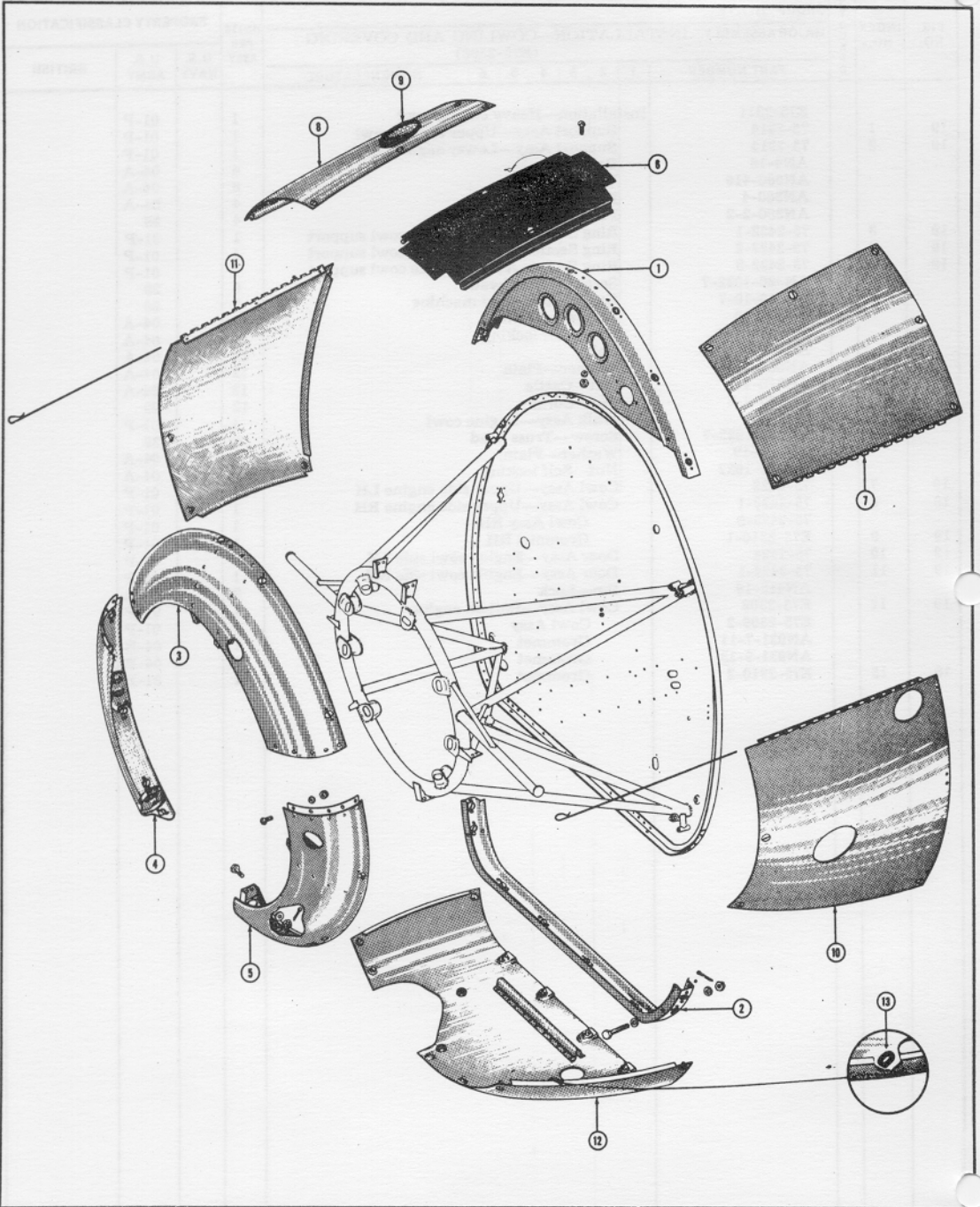


Figure 19—Heavy Engine Cowl Insulation

**RESTRICTED
AN 01-70AC-4**

Section II—Group Assembly Parts List

FIG. NO.	INDEX NO.	STOCKED	GROUP BODY						UNITS PER ASSY	PROPERTY CLASSIFICATION		
			MAJOR ASSEMBLY INSTALLATION—COWLING AND COVERING (E75-2308)							U.S. NAVY	U.S. ARMY	BRITISH
			PART NUMBER	1	2	3	4	5				
20	1		75-2303						1		01-P	
			75-2347						1		01-P	
			AN526-1032-7						5		29	
20	2		75-2370						1		01-P	
20	3		75-2370-1						1		01-P	
			75-2370-2						1		01-P	
			75-2370-3						1		01-P	
			FA6½-45						7		04-A	
			GF6½-250						7		04-A	
			75-4513-26						7		01-P	
20	4		A75N1-2701						1		01-P	
20	5		75-2371-5						1		01-P	
			AN520-10-7						16		29	
			AN960-10						32		04-A	
			AN365-1032						16		04-A	
20	6		75-2372						1		01-P	
20	7		75-2372-1						1		01-P	
20	8		75-2416						5		01-P	
20	9		S6-425						5		04-A	
			AN505-4-6						10		29	
			AN365B440						10		04-A	
			AN520-10-8						10		29	
			AN960-10						12		04-A	
			AN365-1032						10		04-A	

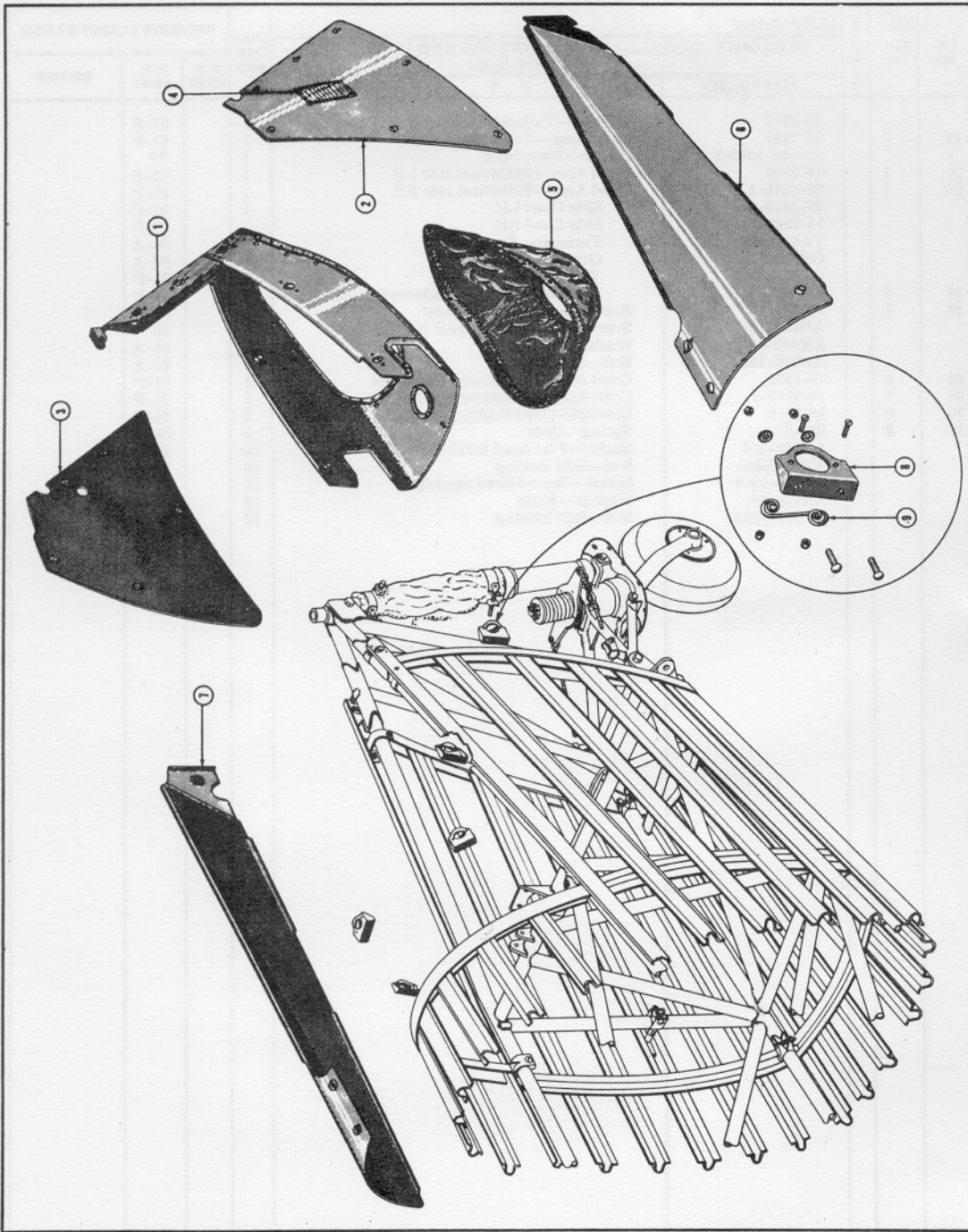


Figure 20—Tailwheel and Stabilizer Cowl Installation

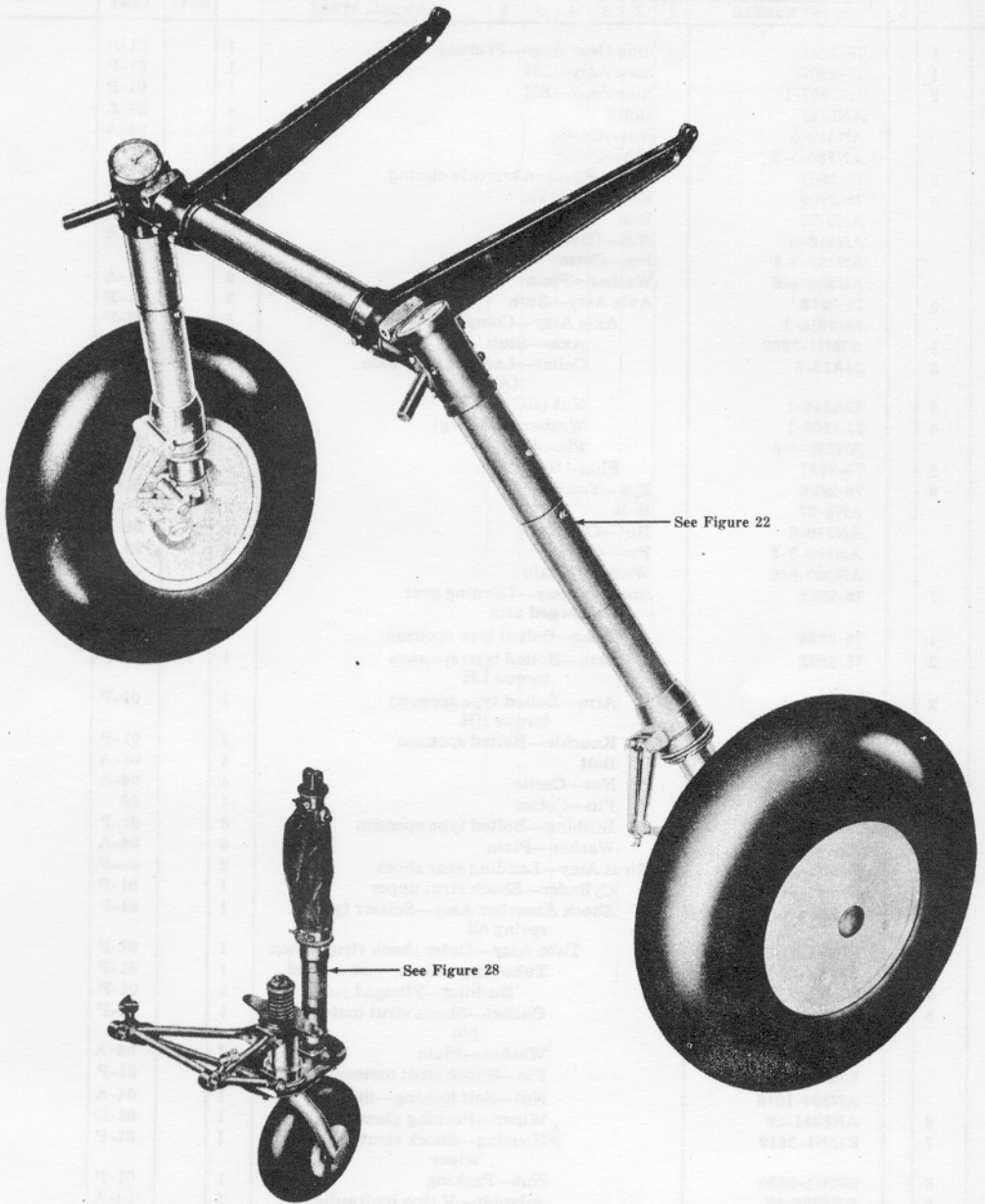


Figure 21—Landing Gear and Tailwheel Installation

RESTRICTED
AN 01-70AC-4

Section II—Group Assembly Parts List

FIG. NO.	INDEX NO.	STOCKED	GROUP ALIGHTING GEAR						UNITS PER ASSY	PROPERTY CLASSIFICATION		
			MAJOR ASSEMBLY INSTALLATION—LANDING GEAR (75-2640)							U.S. NAVY	U.S. ARMY	BRITISH
			PART NUMBER	1	2	3	4	5				
27	12		E75N1-2621						1		01-P	
			E75N1-2625						1		01-P	
27	13		E75N1-2610						1		01-P	
27	14		E75N1-2611						2		01-P	
27	15		E75N1-2624						1		01-P	
27	16		E75N1-2623						1		01-P	
27	17		E75N1-2634						1		01-P	
			AN286-4						2		29	
			AN286-3						1		29	
27	18		E75N1-2633						2		01-P	
27	19		E75N1-2632						1		01-P	
27	20		E75N1-2626						1		01-P	
			E75N1-2626-1						1		01-P	
27	21		E75N1-2627						2		01-P	
27	22		E75N1-2628						2		01-P	
27	23		E75N1-2629						1		01-P	
			E75N1-2629-1						1		01-P	
27	21		E75N1-2627						2		01-P	
27	24		E75N1-2630						2		01-P	
			AN8-40						2		04-A	
			AN310-8						2		04-A	
			AN380-3-3						2		29	
			AN6-22						1		04-A	
			AN310-6						1		04-A	
			AN380-3-3						1		29	
27	25		E75N1-2640						1		01-P	
27	26		E75-2606						1		01-P	
27	27		E75-2607						2		01-P	
27	28		E75N1-2603						1		01-P	
			E75N1-2604						1		01-P	
27	4		E75N1-2631						2		01-P	
27	29		E75N1-2612						1		01-P	
			E75N1-2636						1		01-P	
27	30		E75N1-2617						1		01-P	
27	31		E75N1-2616						1		01-P	
27	32		E75N1-2615						2		01-P	
27	33		AN900-10						1		29	
27	34		AN393-13						2		04-A	
27	35		E75N1-2646						1		01-P	
			AN364-1018						1		04-A	
27	36		905-8						2		04-A	

RESTRICTED

RESTRICTED
AN 01-70AC-4

Section II—Group Assembly Parts List

FIG. NO.	INDEX NO.	S T O C K E D	GROUP ALIGHTING GEAR						UNITS PER ASSY	PROPERTY CLASSIFICATION		
			MAJOR ASSEMBLY INSTALLATION—LANDING GEAR (75-2640)							U.S. NAVY	U.S. ARMY	BRITISH
			PART NUMBER	1	2	3	4	5				
27	37		AN900-8						2		29	
27	38		75-2625						2		01-P	
			AN6-42						1		04-A	
			AN310-6						1		04-A	
			AN960-616						1		04-A	
			AN380-3-3						1		29	
			AN8-5D	Bolt					2		04-A	
			AN310-8	Nut—Castle					2		04-A	
			AN960-816	Washer—Plain					2		04-A	
			AN380-3-4	Pin—Cotter					2		29	
			AN6-14	Bolt					2		04-A	
			AN310-6	Nut—Castle					2		04-A	
			AN960-616	Washer—Plain					2		04-A	
			AN380-3-3	Pin—Cotter					2		29	
22	2		§41-5155	Brake Assy—10 x 1½ in. hydraulic LH (Spec AN-W-6 Bendix Prod. Div 57863-L) GFE					1		03-B	
	2		§41-5156	Brake Assy—10 x 1½ in. hydraulic RH (Spec AN-W-6 Bendix Prod. Div 57864-R) GFE					1		03-B	
25	1		§41-5150	Wheel and Bearing Assy—2.4 in. (Spec AN-W-6 Bendix Prod. Div 56372) GFE					2		03-B	
25	2		§41-5152	Casing—Landing wheel 27.50 x 8.90-12.50 4 ply rayon (Spec AN-C-55) GFE					2		04-B	
25	3		§41-5153	Tube—27.50 x 8.90 (Type III Spec AN-I-14) GFE					2		04-B	
			AN4-7	Bolt					12		04-A	
			AN4-6	Bolt					12		04-A	
			AN310-4	Nut—Castle					12		04-A	
			AN960-416L	Washer—Plain					12		04-A	
			AN380-2-2	Pin—Cotter					24		29	
			AN310-4	Nut—Castle					12		04-A	

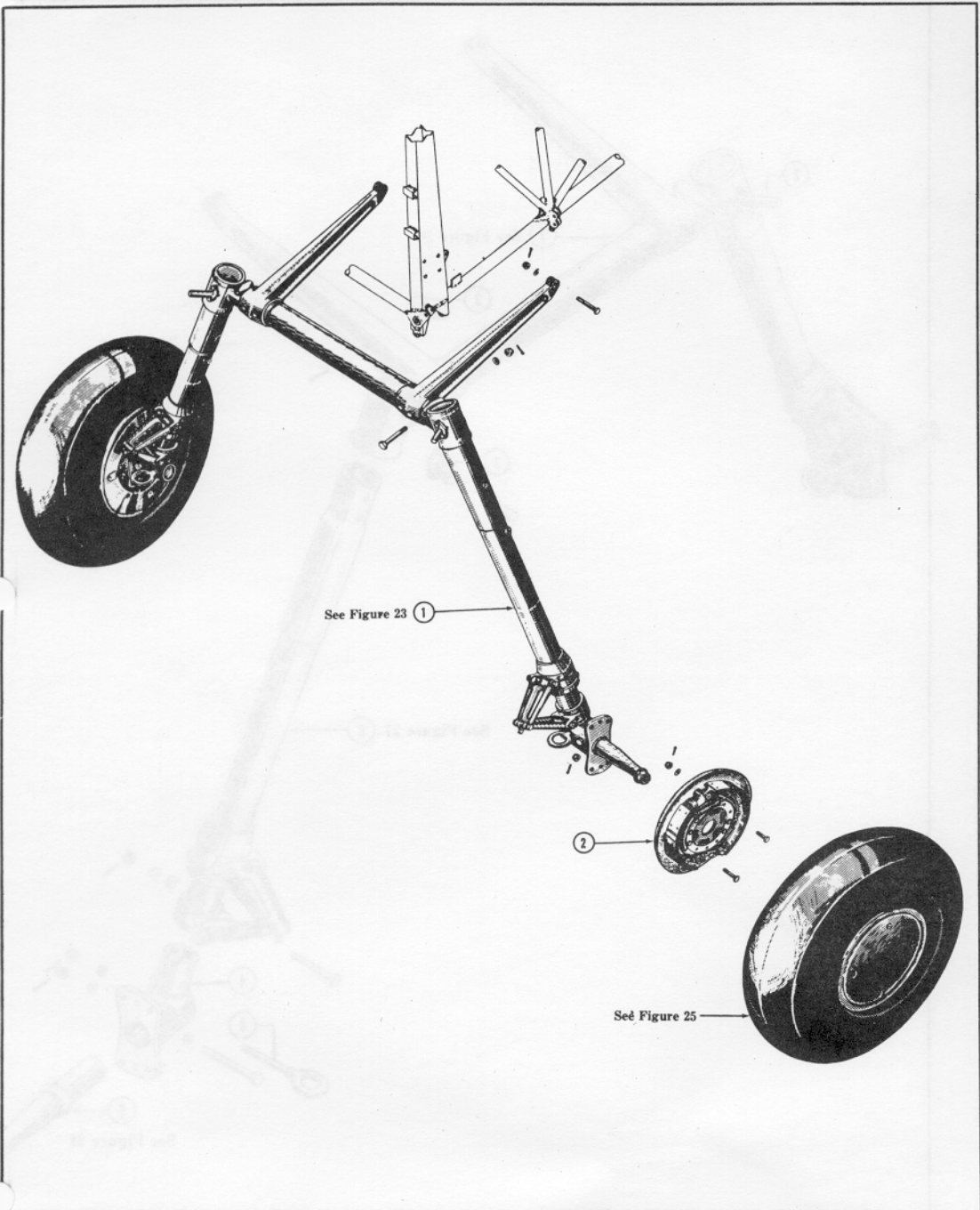


Figure 22—Landing Gear Installation

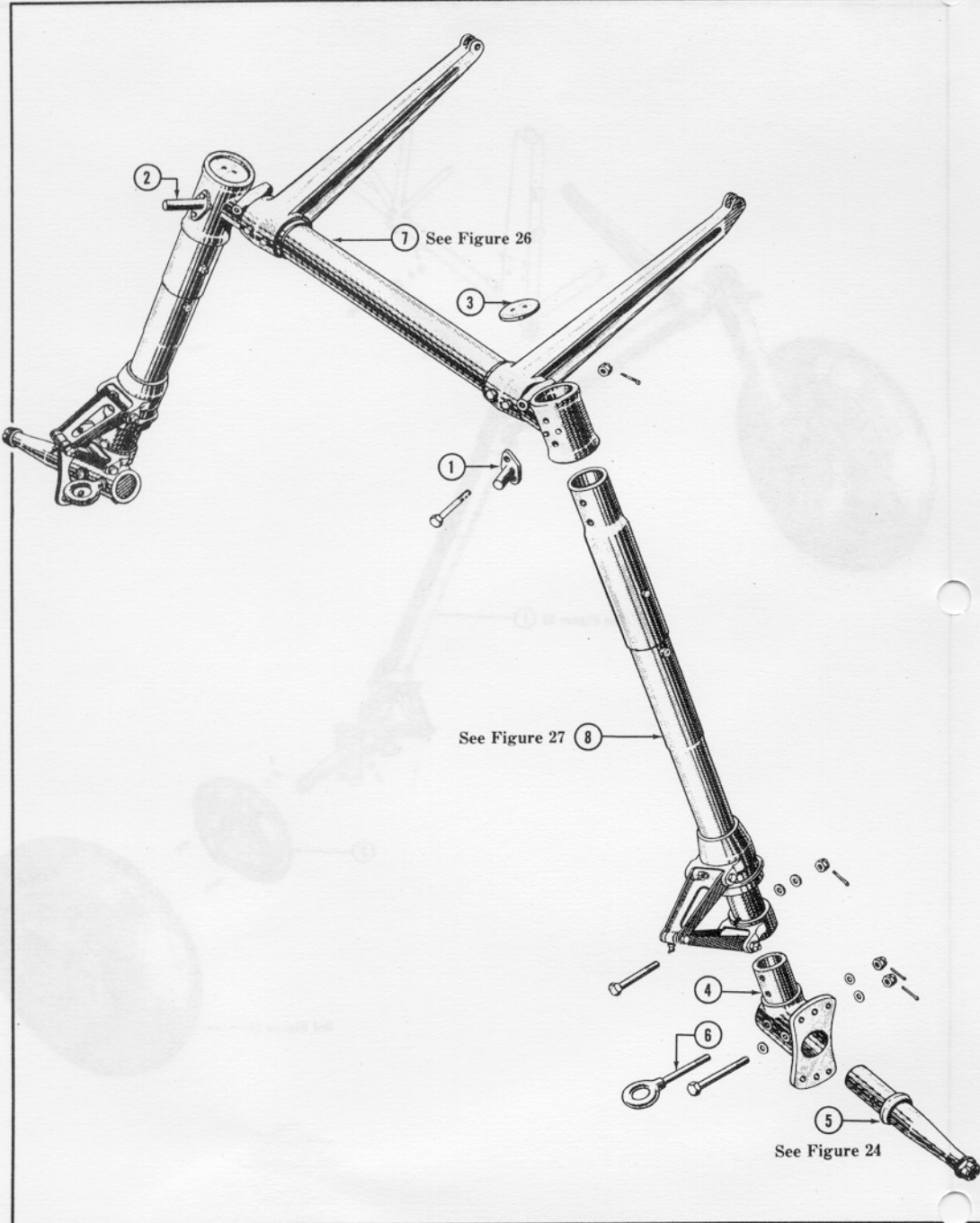


Figure 23—Landing Gear Assembly

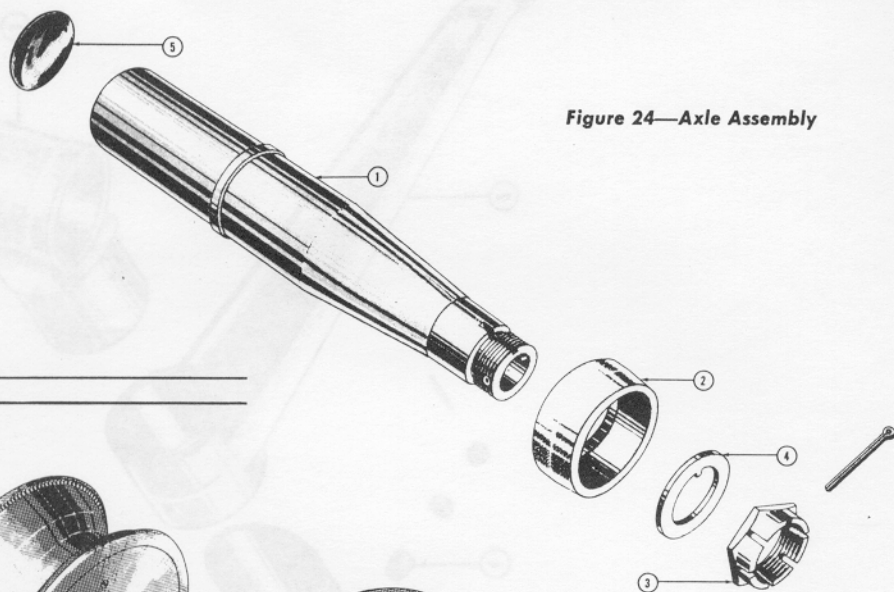


Figure 24—Axle Assembly

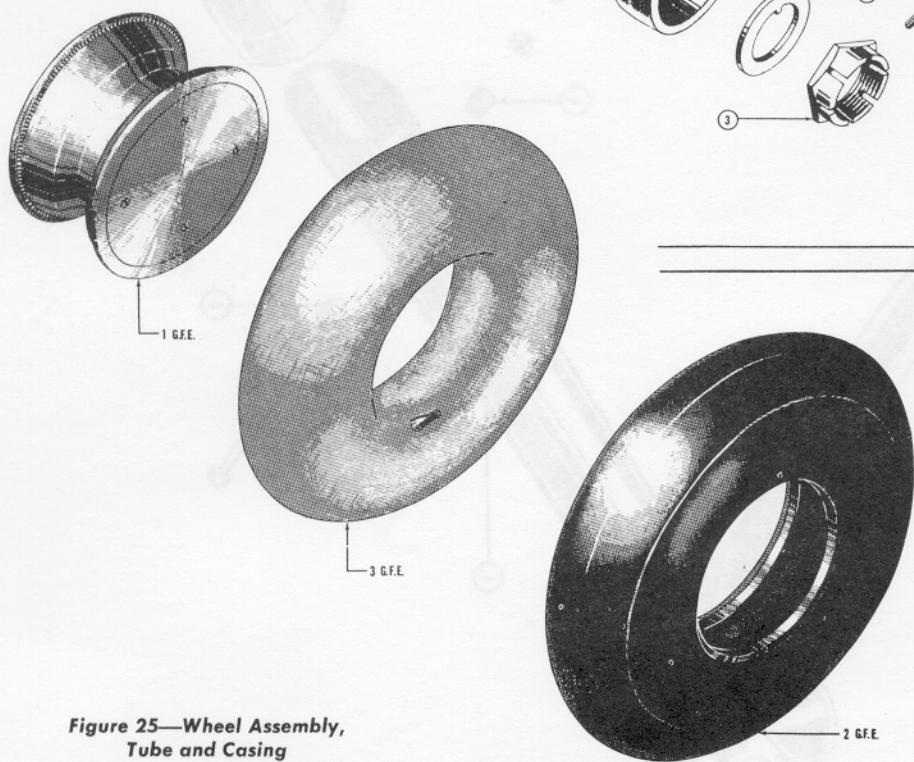


Figure 25—Wheel Assembly,
Tube and Casing

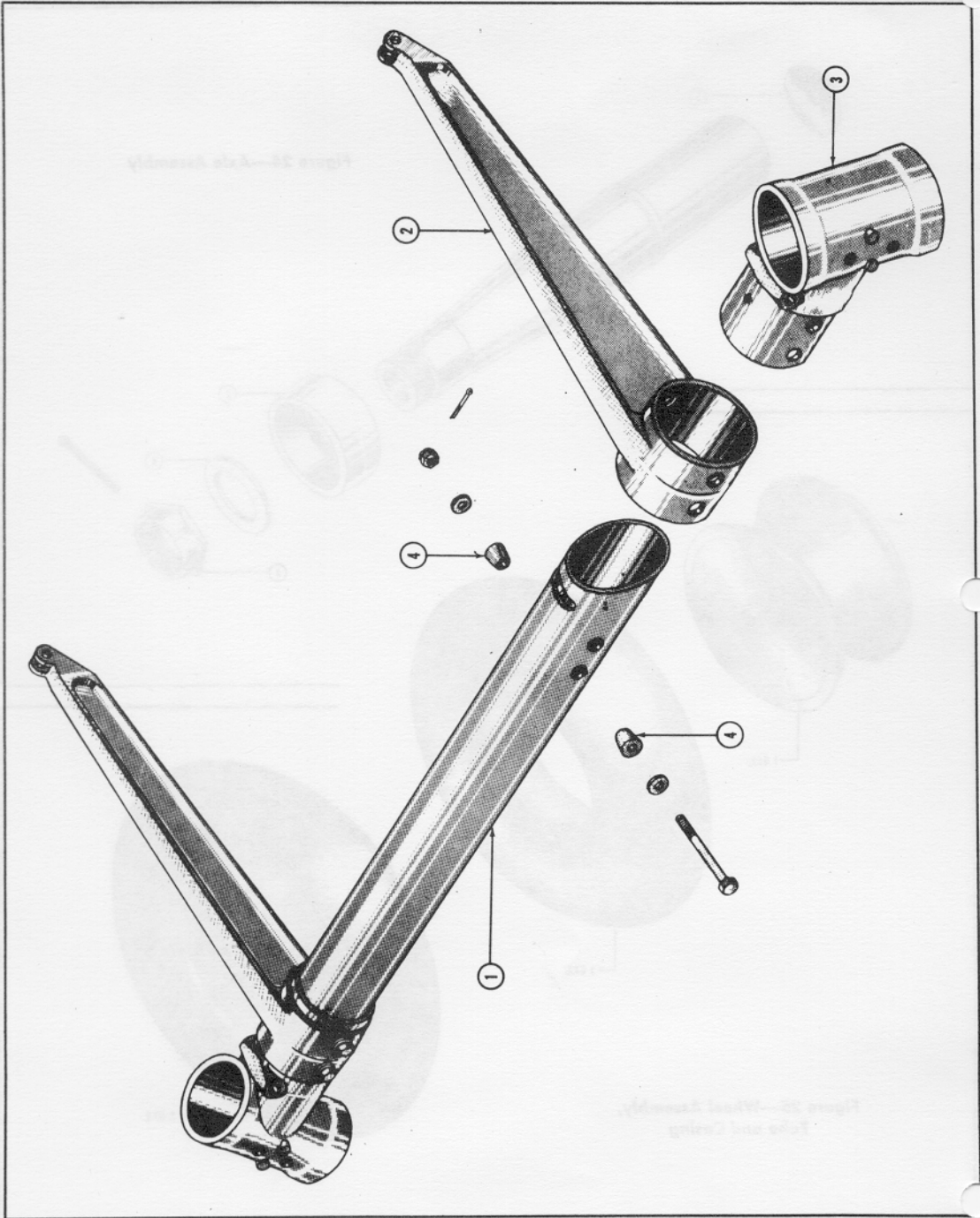


Figure 26—Landing Gear Sponson Assembly

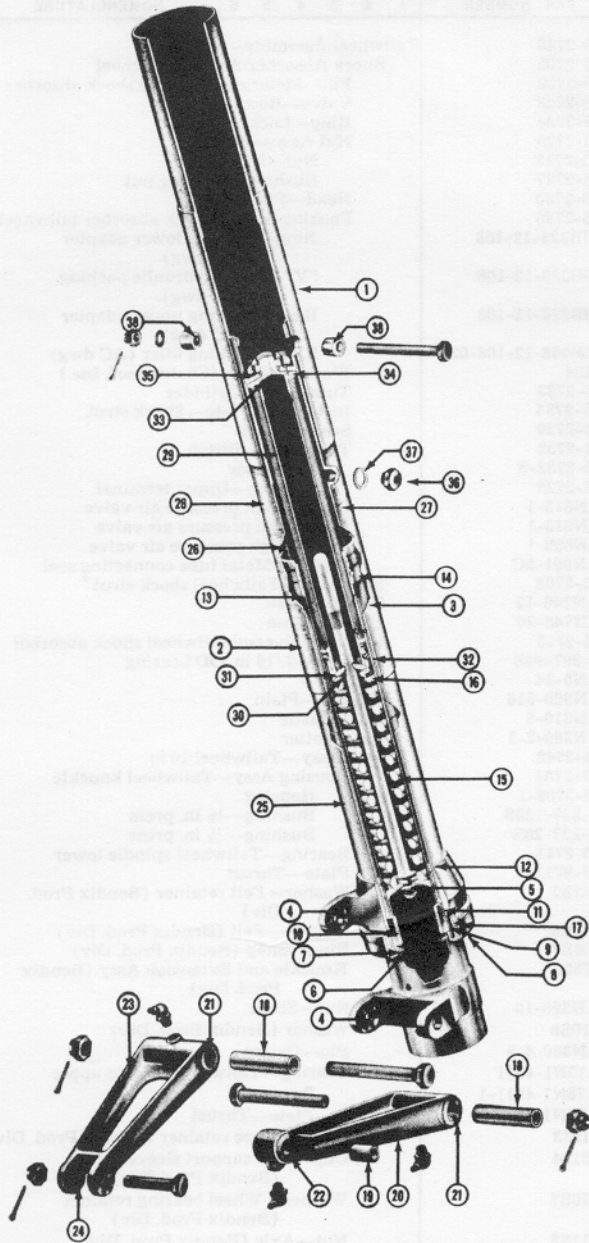


Figure 27—Landing Gear Shock Strut Assembly

RESTRICTED
AN 01-70AC-4

Section II—Group Assembly Parts List

FIG. NO.	INDEX NO.	STOCK E D	GROUP ALIGHTING GEAR						UNITS PER ASSY	PROPERTY CLASSIFICATION		
			MAJOR ASSEMBLY INSTALLATION—TAILWHEEL 10" (75-2743)							U.S. NAVY	U.S. ARMY	BRITISH
			PART NUMBER	1	2	3	4	5				
28	1		75-2746						1		01-P	
29	1		75-2702						1		01-P	
30	1		75-2722						1		01-P	
30	2		75-2723						1		01-P	
30	3		75-2724						1		01-P	
30	4		75-2726						1		01-P	
			75-2728						1		01-P	
			75-2727						1		01-P	
30	5		75-2730						1		01-P	
30	6		75-2745						1		01-P	
			39B223-12-108						1		03-G	
30	7		40B629-12-108						4		04-B	
			39B226-12-108						1		03-G	
			42B498-12-108-028						1		03-G	
30	8		1124						1		29	
30	9		75-2733						1		01-P	
			75-2734						1		01-P	
30	10		75-2739						1		01-P	
30	11		75-2732						1		01-P	
			75-2732-5						1		01-P	
30	12		75-2725						1		01-P	
30	13		AN812-1						1		04-A	
30	14		AN813-1						1		04-A	
30	15		AN809-1						1		04-A	
30	16		AN901-5C						1		29	
29	2		75-2708						1		01-P	
			AN746-12						1		04-A	
			AN746-20						1		04-A	
29	3		75-2715						1		01-P	
29	4		S-207-44S						1		01-P	
			AN5-14						1		04-A	
			AN960-516						1		04-A	
			AN310-5						1		04-A	
			AN380-2-2						1		29	
29	5		75-2742						1		01-P	
31	1		75-2703						1		01-P	
			75-2703-1						1		01-P	
			S-227-120S						2		01-P	
			S-227-28S						2		01-P	
31	2		73-2711						1		01-P	
31	3		73-2711-1						1		01-P	
31	4		107S7						2		03-B	
31	5		108S9						1		03-B	
31	6		109S7						1		03-B	
31	7		57593						1		03-B	
31	8		AN320-10						1		04-A	
31	9		110S9						1		03-B	
			AN380-4-5						1		29	
64	1		A75N1-4511						1		01-P	
31	10		A75N1-4511-1						1		01-P	
31	11		A75N1-4511-2						1		01-P	
31	12		51533						1		03-B	
31	13		55184						1		03-B	
31	14		110S7						1		03-B	
31	15		111S8						1		03-B	
			AN380-4-6						1		29	
			AN502-10-4						3		04-A	
31	16		52901						1		03-B	

RESTRICTED
AN 01-70AC-4

Section II—Group Assembly Parts List

FIG. NO.	INDEX NO.	STOCKED	GROUP ALIGHTING GEAR						UNITS PER ASSY	PROPERTY CLASSIFICATION		
			MAJOR ASSEMBLY INSTALLATION—TAILWHEEL 10" (75-2743)							U.S. NAVY	U.S. ARMY	BRITISH
			PART NUMBER	1	2	3	4	5				
31	17		52903						1		03-B	
31	18		51489						1		03-B	
31	19		AN320-12						1		04-A	
			AN380-4-6						1		29	
29	6		75-2349-1						1		01-P	
29	7		75-2349-2						1		01-P	
			AN5-25						1		04-A	
29	8		S-131-1						1		01-P	
			AN960-516						2		04-A	
			AN310-5						1		04-A	
			AN380-2-2						1		29	
29	9		75-2704						1		01-P	
			75-2704-1						1		01-P	
32	1		S-131-4						2		01-P	
			AN5-25						1		04-A	
			AN5-26						1		04-A	
			AN310-5						2		04-A	
			AN380-2-2						2		29	
33	1		§41-9000						1		03-B	
33	2		§41-9001						1		04-B	
33	2		§41-9002						1		04-B	
33	3		§41-9003						1		04-B	
28	2		AN5-14						2		04-A	
			75-2717						2		01-P	
			AN5-21						1		04-A	
28	3		S-131-1						1		01-P	
			AN960-516						4		04-A	
			AN310-5						3		04-A	
			AN380-2-2						3		29	

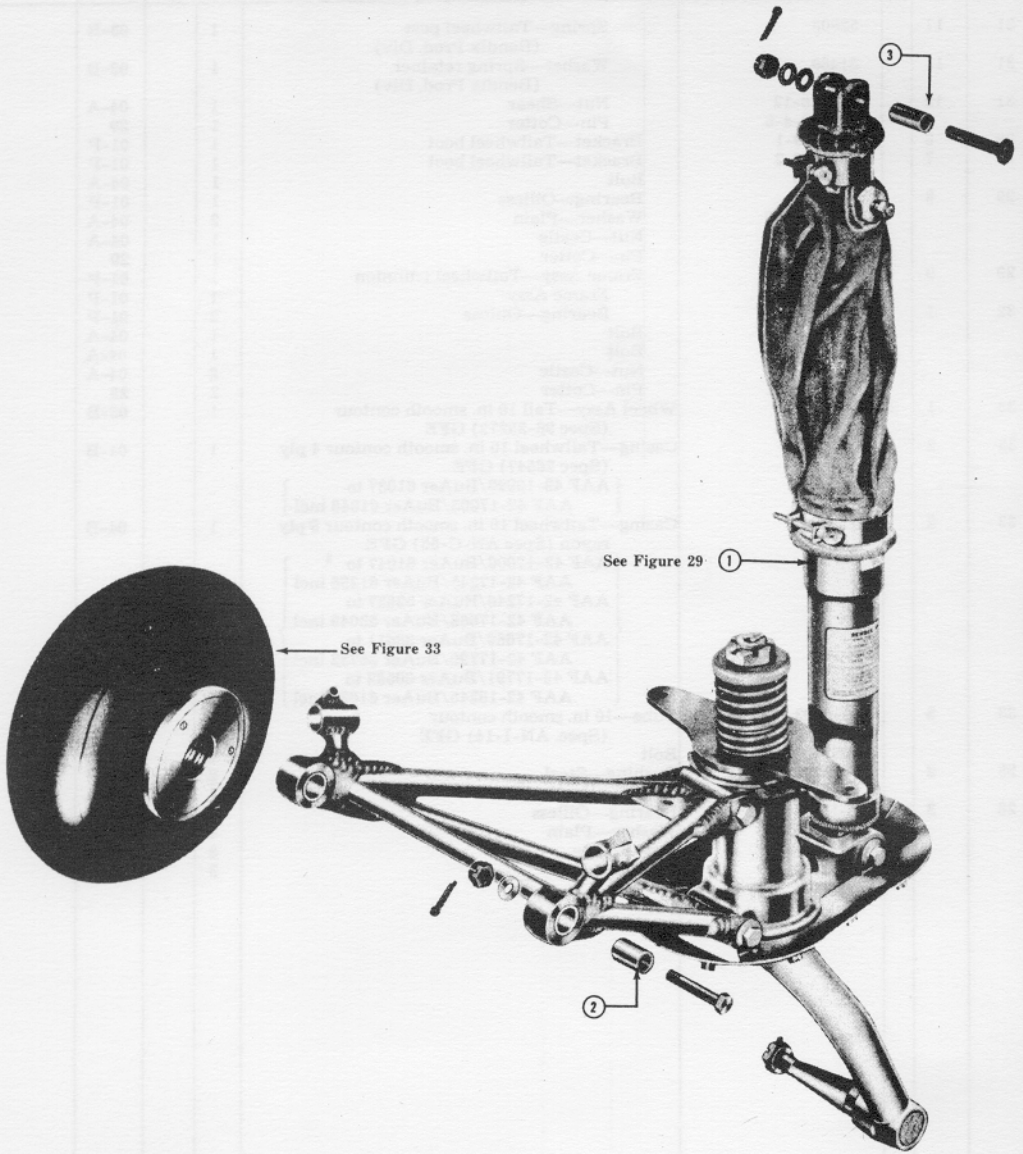


Figure 28—Tailwheel Installation

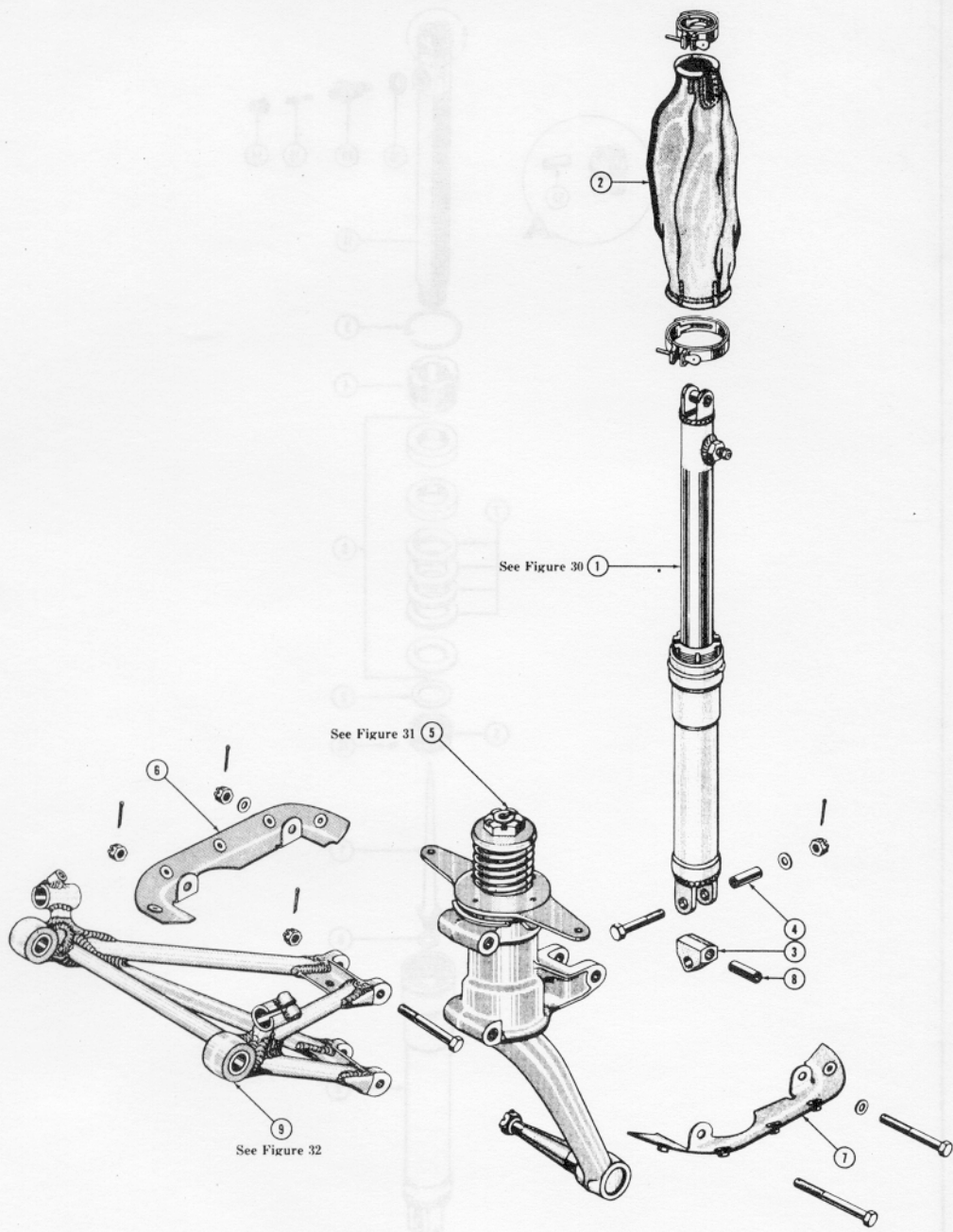


Figure 29—Tailwheel Assembly

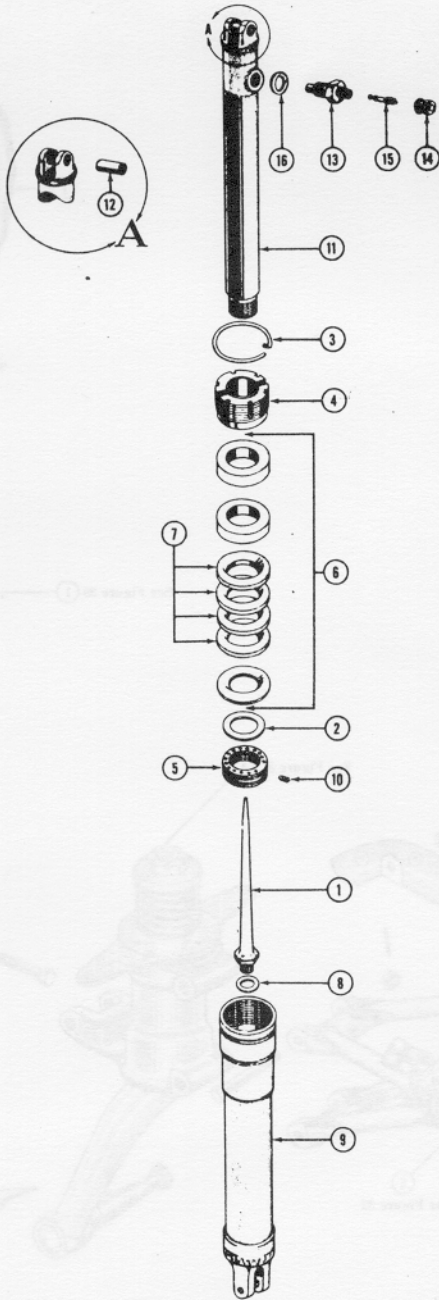


Figure 30—Tailwheel Shock Absorber Assembly

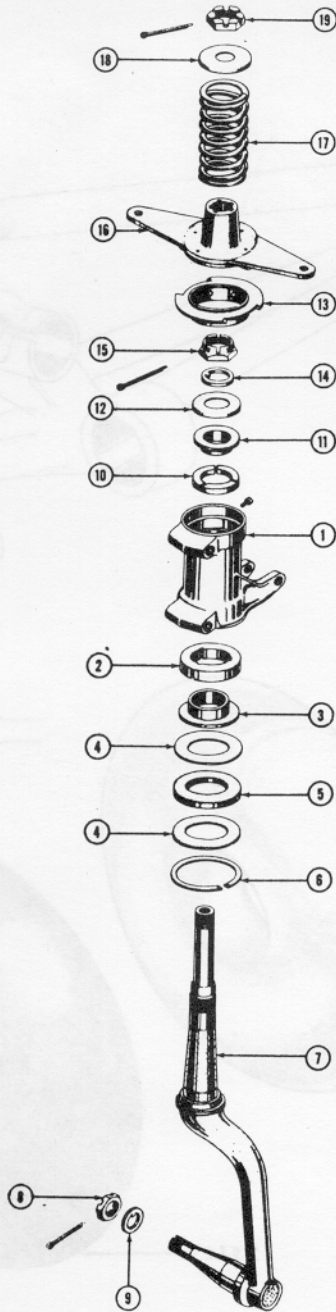


Figure 31—Tailwheel Post Assembly

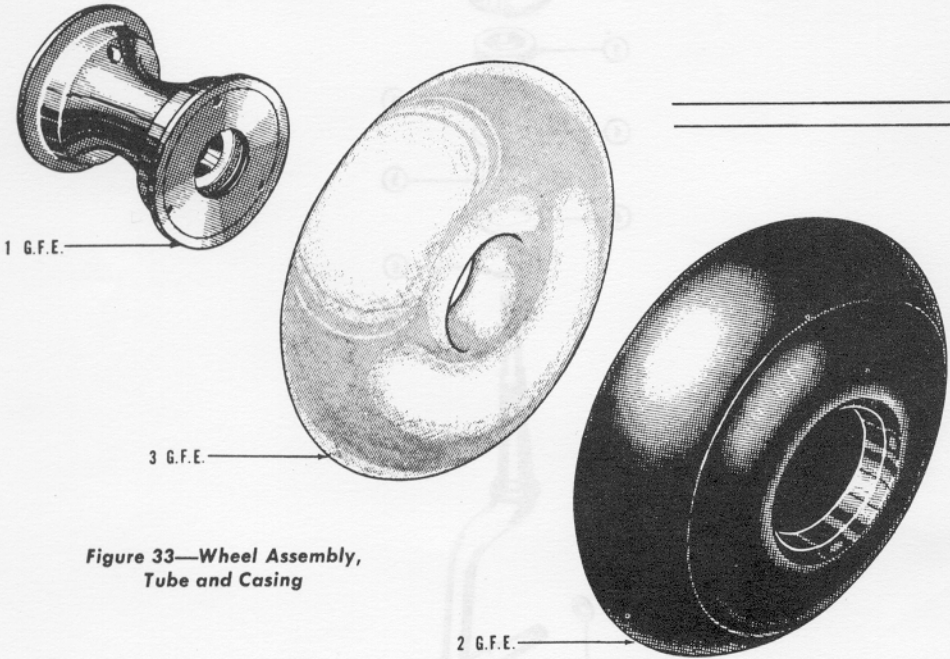
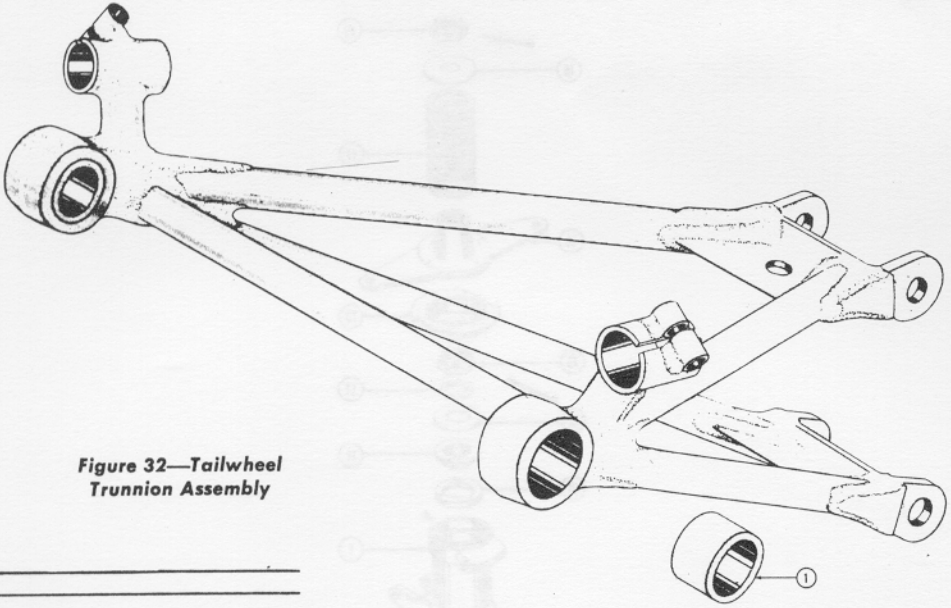


Figure 33—Wheel Assembly,
Tube and Casing