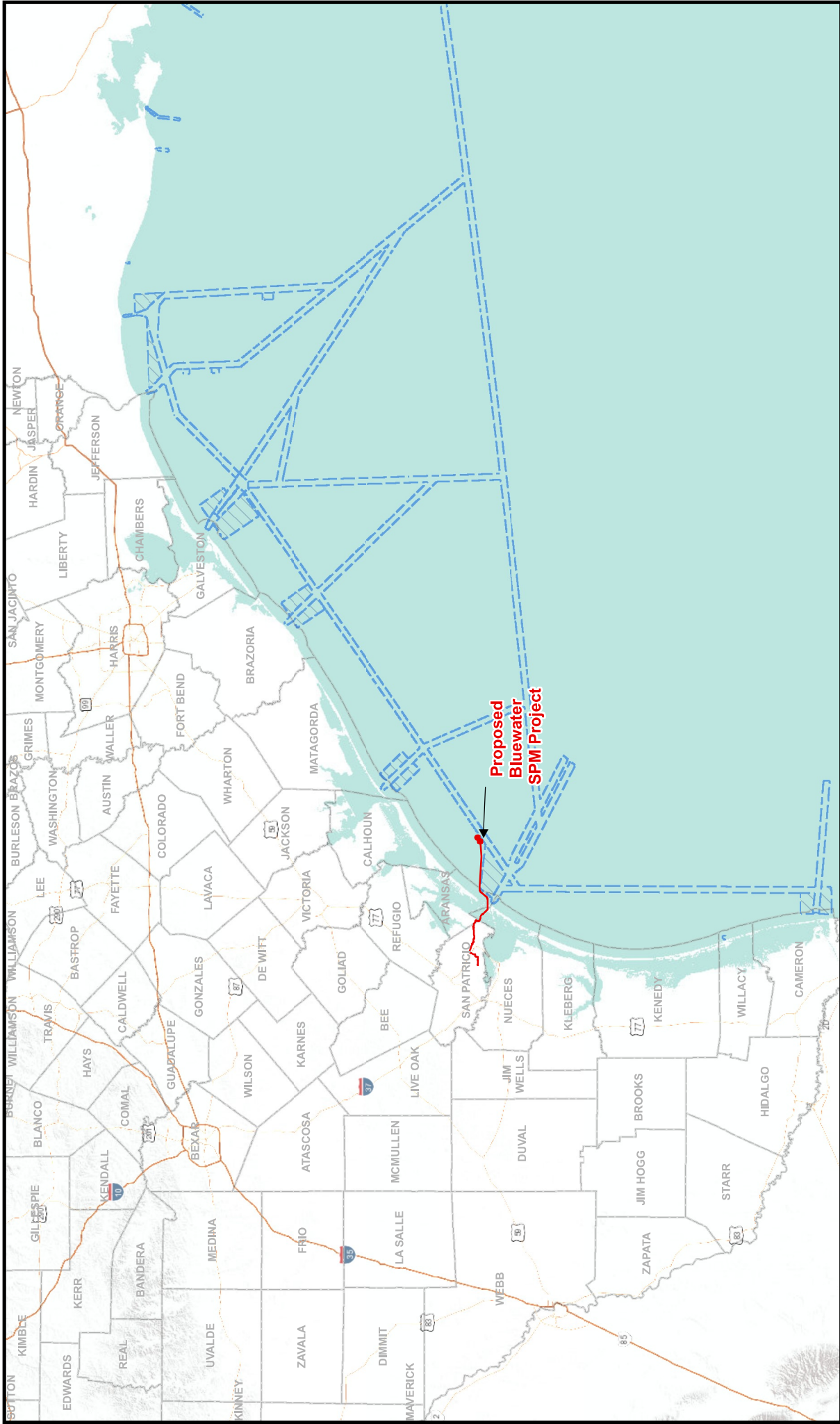


# ATTACHMENT 1 – PROPOSED PROJECT FIGURES



**Proposed  
Bluewater  
SPM Project**

**Figure 1**  
**Proposed Project Vicinity Map**  
 Construction, Operation, and  
 Decommissioning Procedures  
 Bluewater SPM Project  
 Bluewater Texas Terminal LLC  
 Date: May 09, 2019

1 inch = 50 miles  
 0 25 50 Miles

Coordinate System: NAD 1983 2011  
 StatePlane Texas South FIPS 4205 Ft US  
 Projection: Lambert Conformal Conic  
 Datum: NAD 1983 2011  
 Units: Foot US

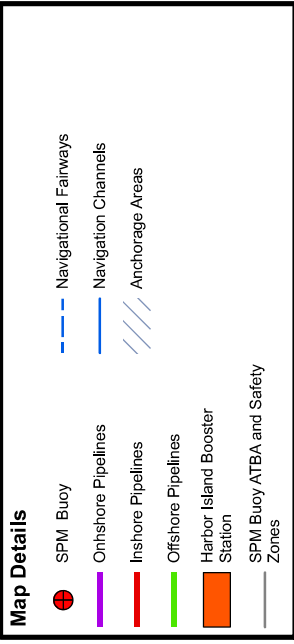
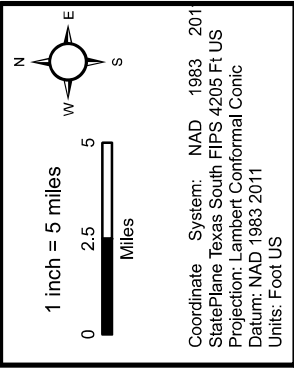
**Map Details**

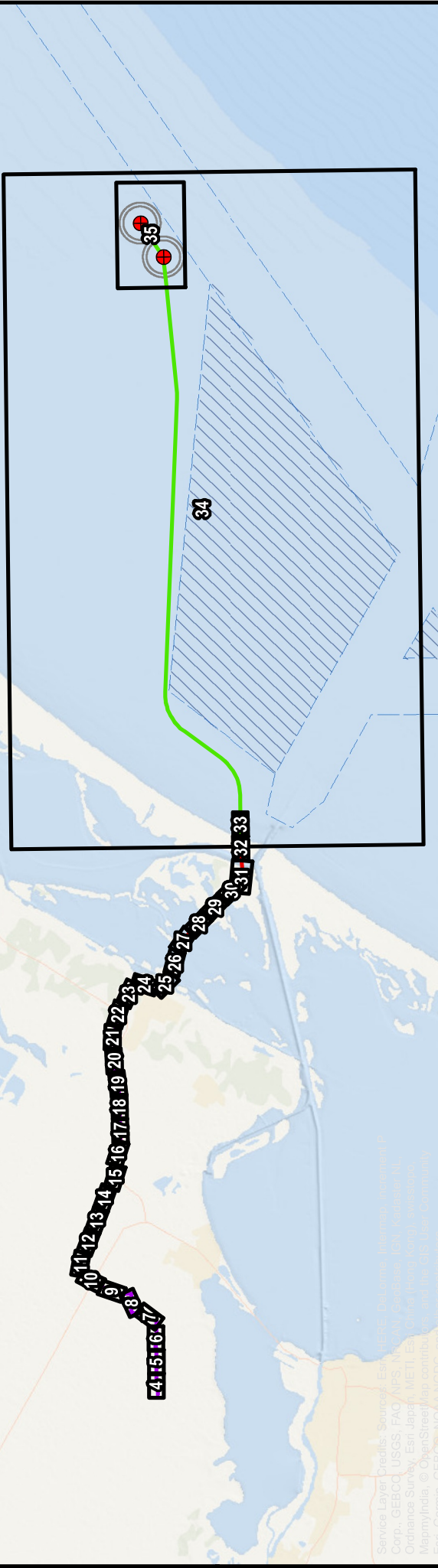
- Proposed Project Components
- - - Navigational Fairways
- /// Anchorage Areas
- Counties

**LLOYD**  
 ENGINEERING, INC. MEXICO



**Figure 2**  
**Proposed Project Component Map**  
 Construction, Operation, and  
 Decommissioning Procedures  
 Bluewater SPM Project  
 Bluewater Texas Terminal LLC  
 Date: May 09, 2019





**Figure 3**  
**Proposed Project Figure Index**  
 Construction, Operation, and  
 Decommissioning Procedures  
 Bluewater SPM Project  
 Bluewater Texas Terminal LLC

1 inch = 6 miles  
 0 3 6 Miles

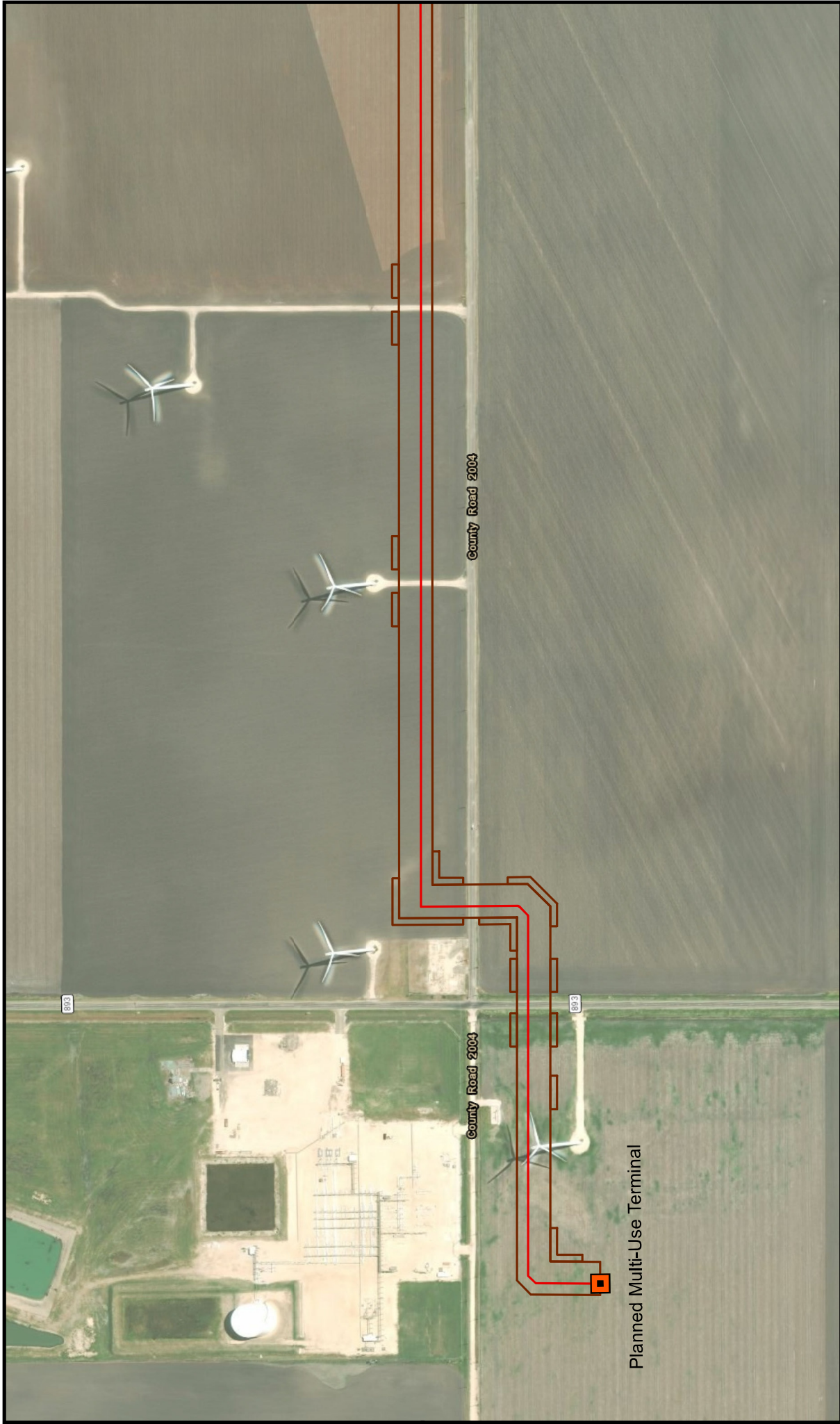
Coordinate System: NAD 1983 HARN  
 StatePlane Texas South FIPS 4205 Feet  
 Projection: Lambert Conformal Conic  
 Datum: North American 1983 HARN  
 Units: Foot US

**Map Details**

- Figure Index
- SPM Buoy System
- Onshore Pipelines
- Inshore Pipelines
- Offshore Pipelines
- SPM Buoy ATBA and Safety Zones
- Navigational Fairways
- Anchorage Areas

**LLOYD**  
 ENGINEERING, INC.

Date: May 09, 2019



**Figure 4**  
**Proposed Project Detail Map**  
 Construction, Operation, and  
 Decommissioning Procedures  
 Bluewater SPM Project  
 Bluewater Texas Terminal LLC  
 Date: May 09, 2019

1 inch = 500 feet

0 250 500  
 Feet

Coordinate System: NAD 1983 2011  
 StatePlane Texas South FIPS 4205 Ft US  
 Projection: Lambert Conformal Conic  
 Datum: NAD 1983 2011  
 Units: Foot US

**Map Details**

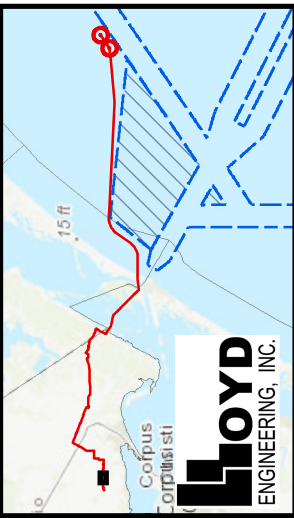
- Planned Multi-Use Terminal
- HDD Entry/Exit Points
- Pipeline Centerline
- HDD Pipeline Centerline
- Construction Workspace

**Wetlands and Waterbodies**

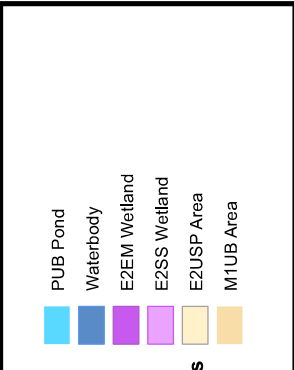
- PEM Wetland
- PSS Wetland
- PUB Pond
- Waterbody
- E2EM Wetland
- E2SS Wetland
- EZUSP Area
- MTUB Area

Corpus Christi

**LOYD**  
 ENGINEERING, INC.



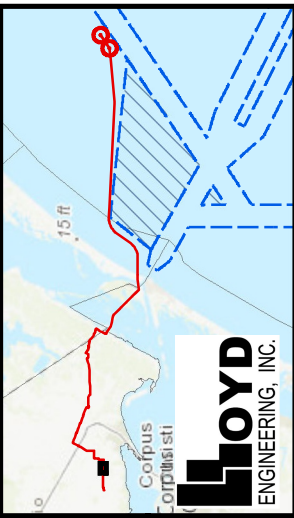
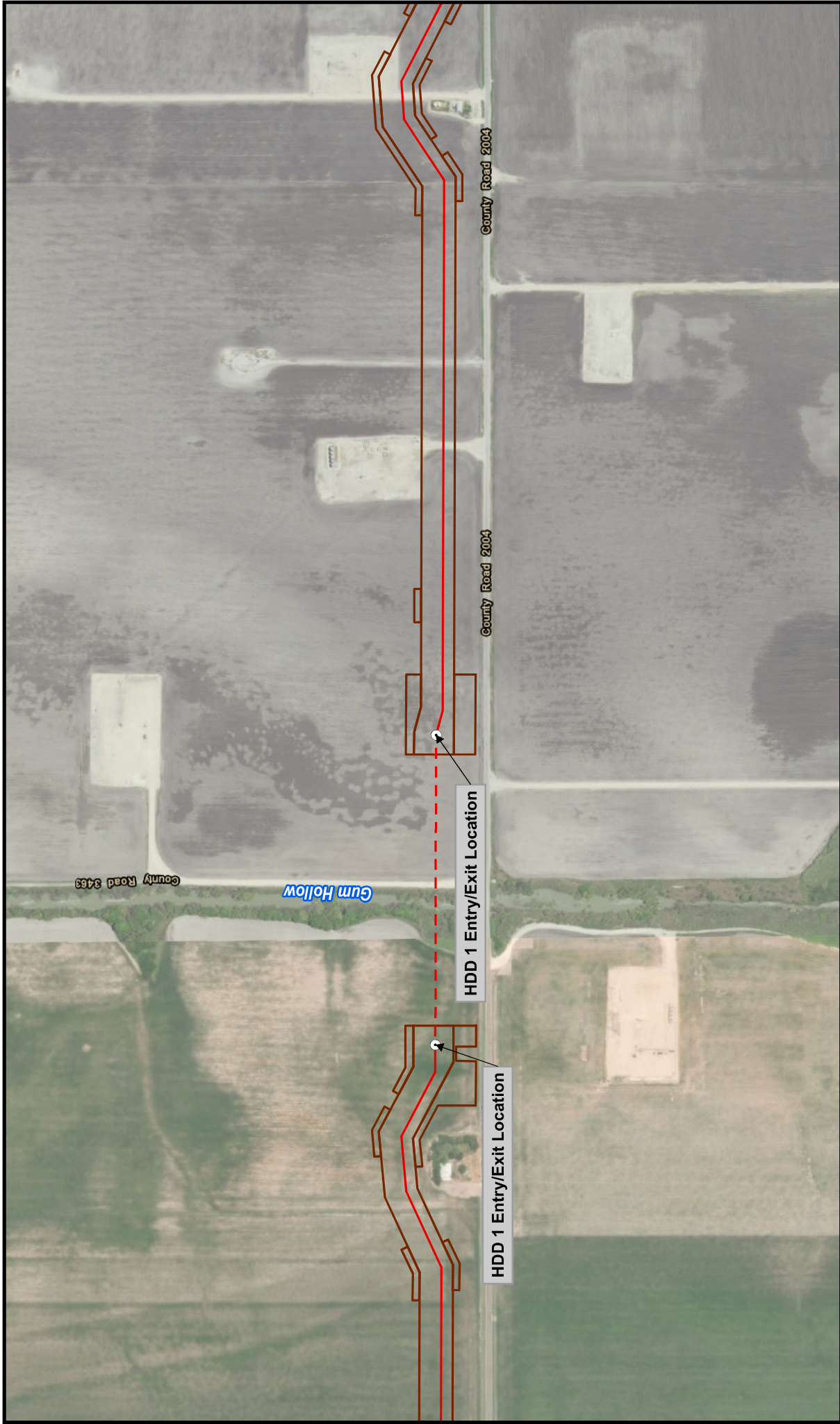
- Map Details**
- HDD Entry/Exit Points
  - Pipeline Centerline
  - - - HDD Pipeline Centerline
  - Construction Workspace
- Wetlands and Waterbodies**
- PUB Pond
  - Waterbody
  - E2EM Wetland
  - E2SS Wetland
  - E2USP Area
  - M1UB Area
  - PEM Wetland
  - PSS Wetland



Coordinate System: NAD 1983 2011  
 StatePlane Texas South FIPS 4205 Ft US  
 Projection: Lambert Conformal Conic  
 Datum: NAD 1983 2011  
 Units: Foot US

**Figure 5**  
**Proposed Project Detail Map**  
 Construction, Operation, and  
 Decommissioning Procedures  
 Bluewater SPM Project  
 Bluewater Texas Terminal LLC

Date: May 09, 2019



- Map Details**
- HDD Entry/Exit Points
  - Pipeline Centerline
  - HDD Pipeline Centerline
  - Construction Workspace
- Wetlands and Waterbodies**
- PUB Pond
  - Waterbody
  - E2EM Wetland
  - E2SS Wetland
  - E2USP Area
  - M1UB Area
  - PEM Wetland
  - PSS Wetland

- PUB Pond
- Waterbody
- E2EM Wetland
- E2SS Wetland
- E2USP Area
- M1UB Area

1 inch = 500 feet

0 250 500 Feet

Coordinate System: NAD 1983 2011  
 StatePlane Texas South FIPS 4205 Ft US  
 Projection: Lambert Conformal Conic  
 Datum: NAD 1983 2011  
 Units: Foot US

**Figure 6**  
**Proposed Project Detail Map**  
 Construction, Operation, and  
 Decommissioning Procedures  
 Bluewater SPM Project  
 Bluewater Texas Terminal LLC

Date: May 09, 2019





**Figure 7**  
**Proposed Project Detail Map**  
 Construction, Operation, and  
 Decommissioning Procedures  
 Bluewater SPM Project  
 Bluewater Texas Terminal LLC  
 Date: May 09, 2019

1 inch = 500 feet

0 250 500  
Feet

Coordinate System: NAD 1983 2011  
 StatePlane Texas South FIPS 4205 Ft US  
 Projection: Lambert Conformal Conic  
 Datum: NAD 1983 2011  
 Units: Foot US

**Map Details**

- HDD Entry/Exit Points
- Pipeline Centerline
- HDD Pipeline Centerline
- Construction Workspace

**Wetlands and Waterbodies**

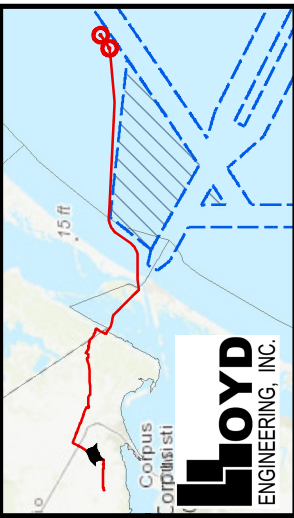
- PUB Pond
- Waterbody
- E2EM Wetland
- E2SS Wetland
- E2USP Area
- M1UB Area
- PEM Wetland
- PSS Wetland

15 ft

Corpus Christi

**LLOYD**  
ENGINEERING, INC.





- Map Details**
- HDD Entry/Exit Points
  - Pipeline Centerline
  - - - HDD Pipeline Centerline
  - Construction Workspace
- Wetlands and Waterbodies**
- PUB Pond
  - Waterbody
  - E2EM Wetland
  - E2SS Wetland
  - E2USP Area
  - M1UB Area
  - PEM Wetland
  - PSS Wetland

1 inch = 500 feet

0 250 500  
Feet

Coordinate System: NAD 1983 2011  
 StatePlane Texas South FIPS 4205 Ft US  
 Projection: Lambert Conformal Conic  
 Datum: NAD 1983 2011  
 Units: Foot US

**Figure 8**  
**Proposed Project Detail Map**  
 Construction, Operation, and  
 Decommissioning Procedures  
 Bluewater SPM Project  
 Bluewater Texas Terminal LLC

Date: May 09, 2019



**Figure 9**  
**Proposed Project Detail Map**  
 Construction, Operation, and  
 Decommissioning Procedures  
 Bluewater SPM Project  
 Bluewater Texas Terminal LLC

Date: May 09, 2019

1 inch = 500 feet

Coordinate System: NAD 1983 2011  
 StatePlane Texas South FIPS 4205 Ft US  
 Projection: Lambert Conformal Conic  
 Datum: NAD 1983 2011  
 Units: Foot US

**Map Details**

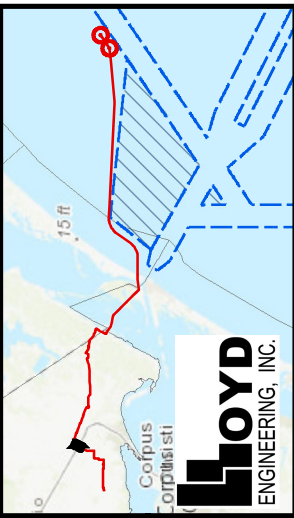
- HDD Entry/Exit Points
- Pipeline Centerline
- HDD Pipeline Centerline
- Construction Workspace

**Wetlands and Waterbodies**

- PUB Pond
- Waterbody
- E2EM Wetland
- E2SS Wetland
- E2USP Area
- M1UB Area
- PEM Wetland
- PSS Wetland

15 ft

Corpus Christi



- Map Details**
- HDD Entry/Exit Points
  - Pipeline Centerline
  - · - · HDD Pipeline Centerline
  - Construction Workspace
- Wetlands and Waterbodies**
- PUB Pond
  - Waterbody
  - E2EM Wetland
  - E2SS Wetland
  - E2USP Area
  - M1UB Area
  - PEM Wetland
  - PSS Wetland

- PUB Pond
- Waterbody
- E2EM Wetland
- E2SS Wetland
- E2USP Area
- M1UB Area

1 inch = 500 feet

0 250 500  
Feet

Coordinate System: NAD 1983 2011  
 StatePlane Texas South FIPS 4205 Ft US  
 Projection: Lambert Conformal Conic  
 Datum: NAD 1983 2011  
 Units: Foot US

**Figure 10**  
**Proposed Project Detail Map**  
 Construction, Operation, and  
 Decommissioning Procedures  
 Bluewater SPM Project  
 Bluewater Texas Terminal LLC

Date: May 09, 2019





**Figure 11**  
**Proposed Project Detail Map**  
 Construction, Operation, and  
 Decommissioning Procedures  
 Bluewater SPM Project  
 Bluewater Texas Terminal LLC  
 Date: May 09, 2019

1 inch = 500 feet

Coordinate System: NAD 1983 2011  
 StatePlane Texas South FIPS 4205 Ft US  
 Projection: Lambert Conformal Conic  
 Datum: NAD 1983 2011  
 Units: Foot US

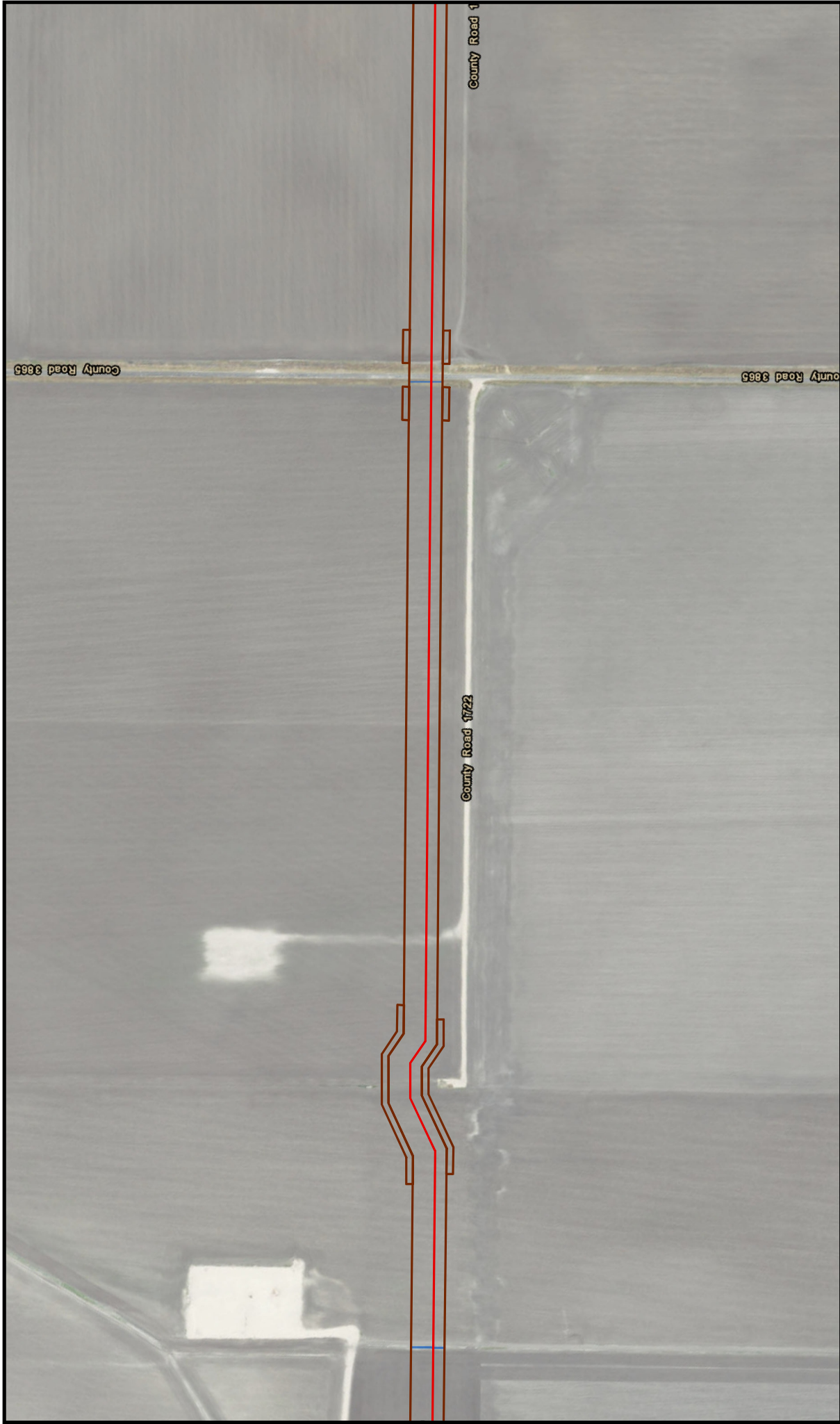
**Map Details**

- HDD Entry/Exit Points
- Pipeline Centerline
- HDD Pipeline Centerline
- Construction Workspace

**Wetlands and Waterbodies**

- PUB Pond
- Waterbody
- E2EM Wetland
- E2SS Wetland
- E2USP Area
- M1UB Area
- PEM Wetland
- PSS Wetland

Corpus Christi



**Figure 12**  
**Proposed Project Detail Map**  
 Construction, Operation, and  
 Decommissioning Procedures  
 Bluewater SPM Project  
 Bluewater Texas Terminal LLC

Date: May 09, 2019

1 inch = 500 feet

0 250 500  
Feet

Coordinate System: NAD 1983 2011  
 StatePlane Texas South FIPS 4205 Ft US  
 Projection: Lambert Conformal Conic  
 Datum: NAD 1983 2011  
 Units: Foot US

**Map Details**

- HDD Entry/Exit Points
- Pipeline Centerline
- HDD Pipeline Centerline
- Construction Workspace

**Wetlands and Waterbodies**

- PUB Pond
- Waterbody
- E2EM Wetland
- E2SS Wetland
- E2USP Area
- M1UB Area
- PEM Wetland
- PSS Wetland

Corpus Christi

**LOYD**  
ENGINEERING, INC.



**Figure 13**  
**Proposed Project Detail Map**  
 Construction, Operation, and  
 Decommissioning Procedures  
 Bluewater SPM Project  
 Bluewater Texas Terminal LLC

Date: May 09, 2019

1 inch = 500 feet

0 250 500  
Feet

Coordinate System: NAD 1983 2011  
 StatePlane Texas South FIPS 4205 Ft US  
 Projection: Lambert Conformal Conic  
 Datum: NAD 1983 2011  
 Units: Foot US

**Map Details**

- HDD Entry/Exit Points
- Pipeline Centerline
- HDD Pipeline Centerline
- Construction Workspace

**Wetlands and Waterbodies**

- PUB Pond
- Waterbody
- E2EM Wetland
- E2SS Wetland
- E2USP Area
- M1UB Area
- PEM Wetland
- PSS Wetland

Corpus Christi

**LOYD**  
ENGINEERING, INC.



**Figure 14**  
**Proposed Project Detail Map**  
 Construction, Operation, and  
 Decommissioning Procedures  
 Bluewater SPM Project  
 Bluewater Texas Terminal LLC

Date: May 09, 2019

1 inch = 500 feet

0 250 500  
 Feet

Coordinate System: NAD 1983 2011  
 StatePlane Texas South FIPS 4205 Ft US  
 Projection: Lambert Conformal Conic  
 Datum: NAD 1983 2011  
 Units: Foot US

**Map Details**

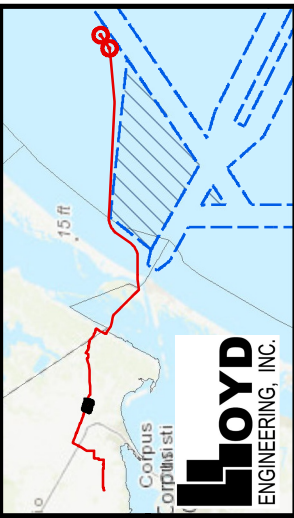
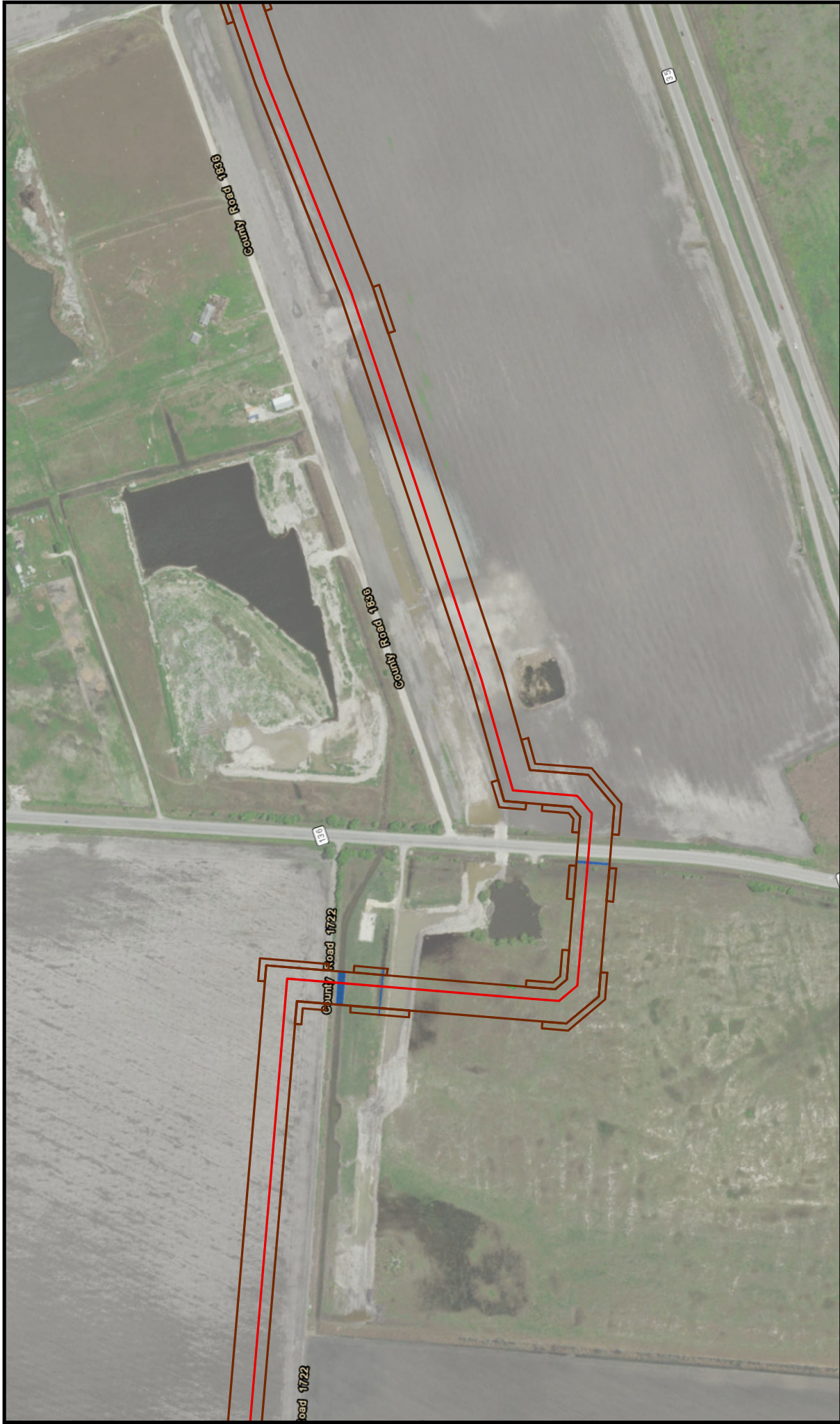
- HDD Entry/Exit Points
- Pipeline Centerline
- HDD Pipeline Centerline
- Construction Workspace

**Wetlands and Waterbodies**

- PUB Pond
- Waterbody
- E2EM Wetland
- E2SS Wetland
- E2USP Area
- M1UB Area
- PEM Wetland
- PSS Wetland

Corpus Christi

**LLOYD**  
 ENGINEERING, INC.



- Map Details**
- HDD Entry/Exit Points
  - Pipeline Centerline
  - - - HDD Pipeline Centerline
  - Construction Workspace
- Wetlands and Waterbodies**
- PEM Wetland
  - PSS Wetland

- PUB Pond
- Waterbody
- E2EM Wetland
- E2SS Wetland
- E2USP Area
- M1UB Area

1 inch = 500 feet

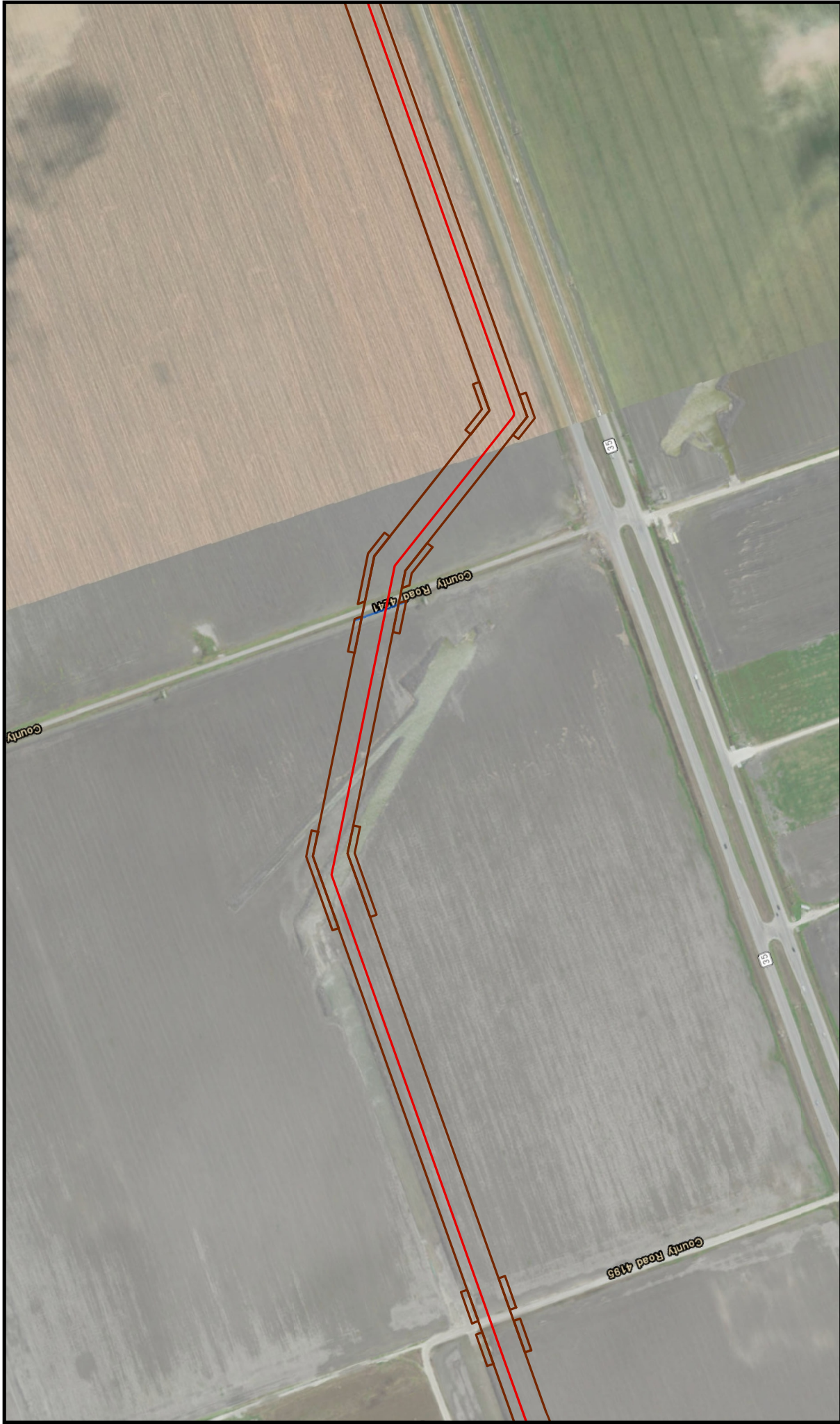
0 250 500  
Feet

Coordinate System: NAD 1983 2011  
 StatePlane Texas South FIPS 4205 Ft US  
 Projection: Lambert Conformal Conic  
 Datum: NAD 1983 2011  
 Units: Foot US

**Figure 15**  
**Proposed Project Detail Map**  
 Construction, Operation, and  
 Decommissioning Procedures  
 Bluewater SPM Project  
 Bluewater Texas Terminal LLC

Date: May 09, 2019





**Figure 16**  
**Proposed Project Detail Map**  
 Construction, Operation, and  
 Decommissioning Procedures  
 Bluewater SPM Project  
 Bluewater Texas Terminal LLC  
 Date: May 09, 2019

1 inch = 500 feet

Coordinate System: NAD 1983 2011  
 StatePlane Texas South FIPS 4205 Ft US  
 Projection: Lambert Conformal Conic  
 Datum: NAD 1983 2011  
 Units: Foot US

**Map Details**

- HDD Entry/Exit Points
- Pipeline Centerline
- HDD Pipeline Centerline
- Construction Workspace

**Wetlands and Waterbodies**

- PUB Pond
- Waterbody
- E2EM Wetland
- E2SS Wetland
- E2USP Area
- M1UB Area
- PEM Wetland
- PSS Wetland

Corpus Christi



**Figure 17**  
**Proposed Project Detail Map**  
 Construction, Operation, and  
 Decommissioning Procedures  
 Bluewater SPM Project  
 Bluewater Texas Terminal LLC

Date: May 09, 2019

1 inch = 500 feet

Coordinate System: NAD 1983 2011  
 StatePlane Texas South FIPS 4205 Ft US  
 Projection: Lambert Conformal Conic  
 Datum: NAD 1983 2011  
 Units: Foot US

**Map Details**

- HDD Entry/Exit Points
- Pipeline Centerline
- HDD Pipeline Centerline
- Construction Workspace

**Wetlands and Waterbodies**

- PUB Pond
- Waterbody
- E2EM Wetland
- E2SS Wetland
- E2USP Area
- M1UB Area
- PEM Wetland
- PSS Wetland

Corpus Christi

**LOYD**  
 ENGINEERING, INC.



**Figure 18**  
**Proposed Project Detail Map**  
 Construction, Operation, and  
 Decommissioning Procedures  
 Bluewater SPM Project  
 Bluewater Texas Terminal LLC

Date: May 09, 2019

1 inch = 500 feet

Coordinate System: NAD 1983 2011  
 StatePlane Texas South FIPS 4205 Ft US  
 Projection: Lambert Conformal Conic  
 Datum: NAD 1983 2011  
 Units: Foot US

**Map Details**

- HDD Entry/Exit Points
- Pipeline Centerline
- HDD Pipeline Centerline
- Construction Workspace

**Wetlands and Waterbodies**

- PEM Wetland
- PSS Wetland
- PUB Pond
- Waterbody
- E2EM Wetland
- E2SS Wetland
- E2USP Area
- M1UB Area

Corpus Christi

**LOYD**  
 ENGINEERING, INC.

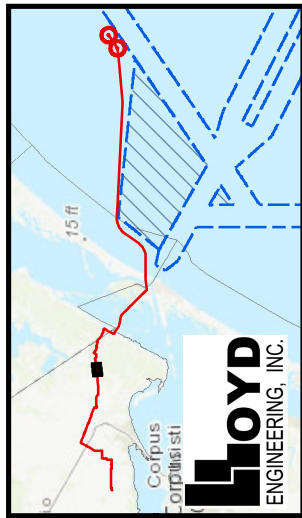


County Road 4491

37

25

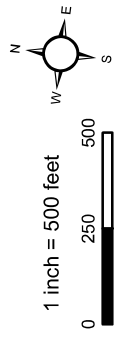
25



**LOYD**  
ENGINEERING, INC.

**Map Details**

- HDD Entry/Exit Points
- Pipeline Centerline
- HDD Pipeline Centerline
- Construction Workspace
- Wetlands and Waterbodies
  - PEM Wetland
  - PSS Wetland
- PUB Pond
- Waterbody
- E2EM Wetland
- E2SS Wetland
- E2USP Area
- M1UB Area



1 inch = 500 feet

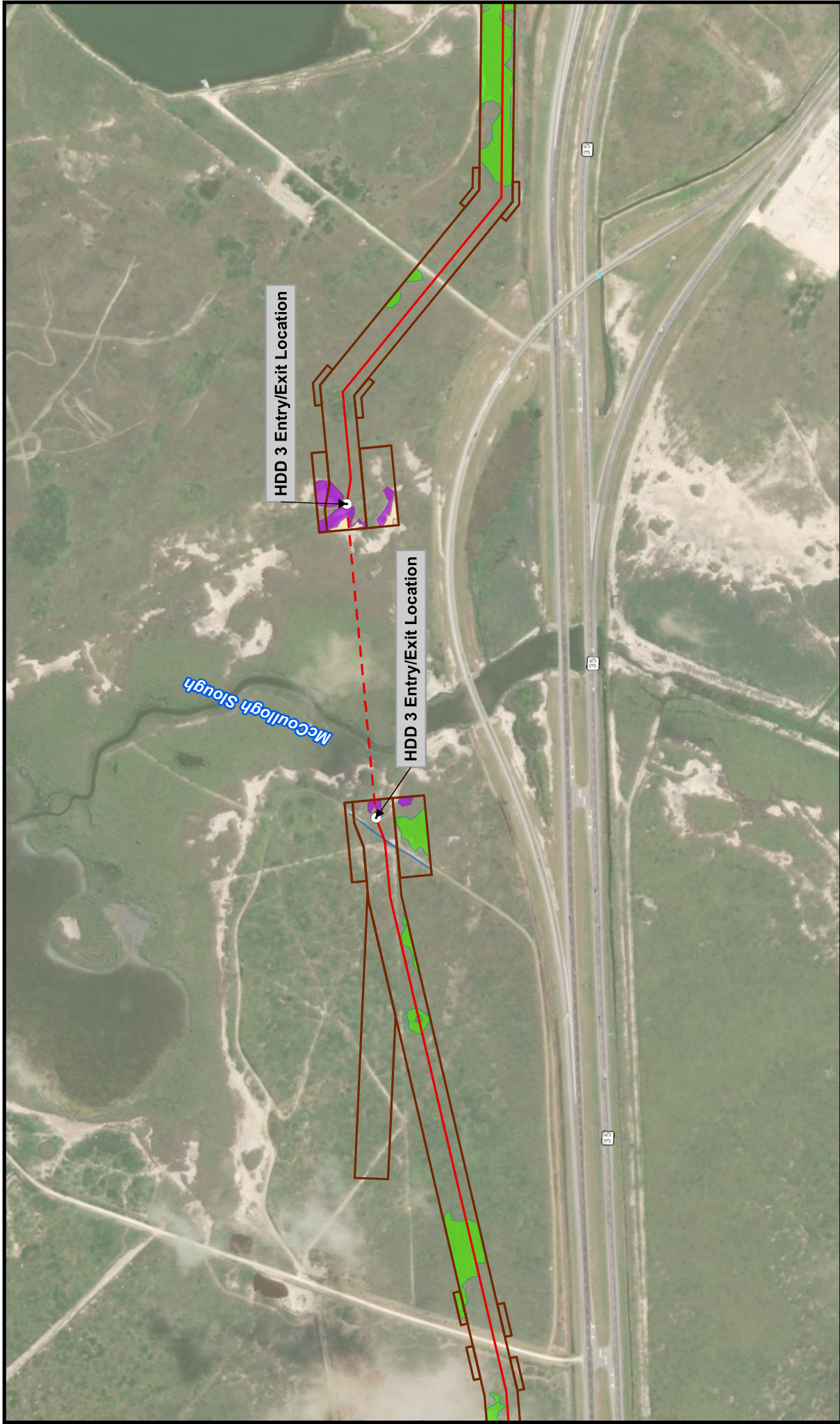
0 250 500 Feet

Coordinate System: NAD 1983 2011  
 StatePlane Texas South FIPS 4205 Ft US  
 Projection: Lambert Conformal Conic  
 Datum: NAD 1983 2011  
 Units: Foot US

**Figure 19**  
**Proposed Project Detail Map**

Construction, Operation, and  
 Decommissioning Procedures  
 Bluewater SPM Project  
 Bluewater Texas Terminal LLC

Date: May 09, 2019



HDD 3 Entry/Exit Location

HDD 3 Entry/Exit Location

McCullough Slough

86

86

86

**Figure 20**  
**Proposed Project Detail Map**  
 Construction, Operation, and  
 Decommissioning Procedures  
 Bluewater SPM Project  
 Bluewater Texas Terminal LLC

Date: May 09, 2019

1 inch = 500 feet

0 250 500 Feet

Coordinate System: NAD 1983 2011  
 StatePlane Texas South FIPS 4205 Ft US  
 Projection: Lambert Conformal Conic  
 Datum: NAD 1983 2011  
 Units: Foot US

**Map Details**

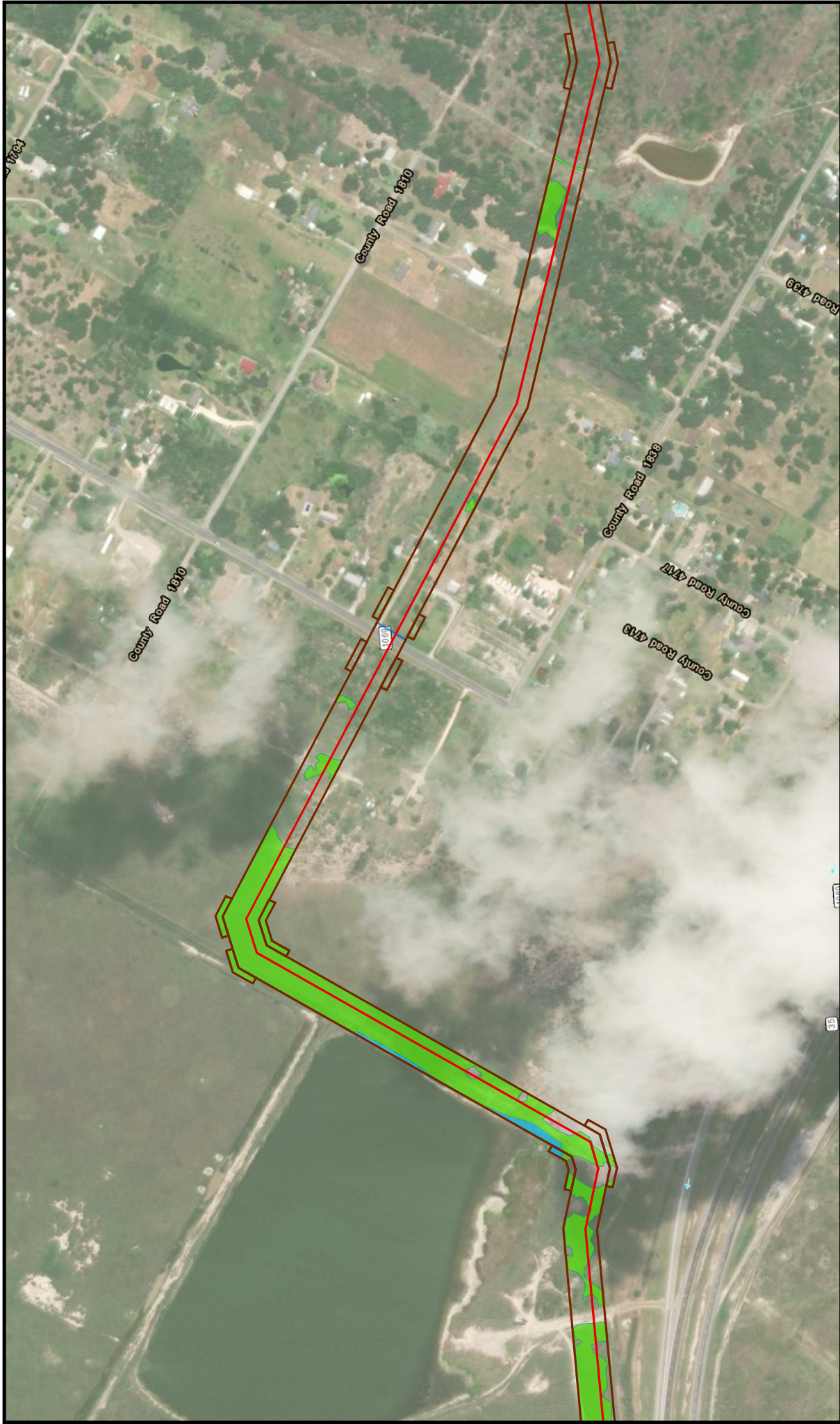
- HDD Entry/Exit Points
- Pipeline Centerline
- HDD Pipeline Centerline
- Construction Workspace

**Wetlands and Waterbodies**

- PUB Pond
- Waterbody
- E2EM Wetland
- E2SS Wetland
- E2USP Area
- M1UB Area
- PEM Wetland
- PSS Wetland

Corpus Christi

**LOYD**  
 ENGINEERING, INC.



**Figure 21**  
**Proposed Project Detail Map**  
 Construction, Operation, and  
 Decommissioning Procedures  
 Bluewater SPM Project  
 Bluewater Texas Terminal LLC  
 Date: May 09, 2019

1 inch = 500 feet

Coordinate System: NAD 1983 2011  
 StatePlane Texas South FIPS 4205 Ft US  
 Projection: Lambert Conformal Conic  
 Datum: NAD 1983 2011  
 Units: Foot US

**Map Details**

- HDD Entry/Exit Points
- Pipeline Centerline
- HDD Pipeline Centerline
- Construction Workspace

**Wetlands and Waterbodies**

- PEM Wetland
- PSS Wetland
- PUB Pond
- Waterbody
- E2EM Wetland
- E2SS Wetland
- E2USP Area
- M1UB Area

Corpus Christi

**LOYD**  
 ENGINEERING, INC.



**Figure 22**  
**Proposed Project Detail Map**  
 Construction, Operation, and  
 Decommissioning Procedures  
 Bluewater SPM Project  
 Bluewater Texas Terminal LLC  
 Date: May 09, 2019

1 inch = 500 feet

Coordinate System: NAD 1983 2011  
 StatePlane Texas South FIPS 4205 Ft US  
 Projection: Lambert Conformal Conic  
 Datum: NAD 1983 2011  
 Units: Foot US

**Map Details**

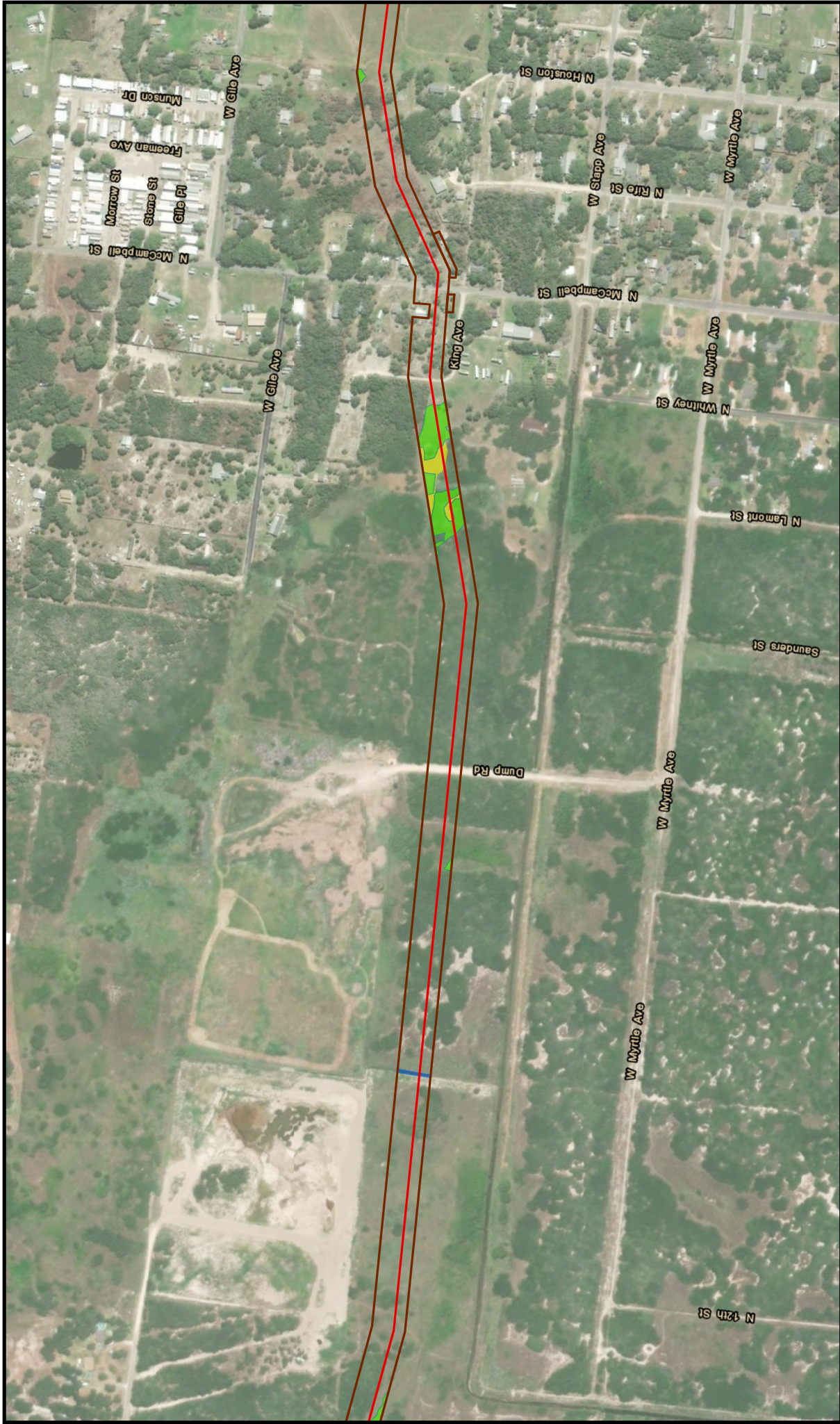
- HDD Entry/Exit Points
- Pipeline Centerline
- HDD Pipeline Centerline
- Construction Workspace

**Wetlands and Waterbodies**

- PUB Pond
- Waterbody
- E2EM Wetland
- E2SS Wetland
- E2USP Area
- M1UB Area
- PEM Wetland
- PSS Wetland

Corpus Christi

**LOYD**  
 ENGINEERING, INC.



**Figure 23**  
**Proposed Project Detail Map**  
 Construction, Operation, and  
 Decommissioning Procedures  
 Bluewater SPM Project  
 Bluewater Texas Terminal LLC

1 inch = 500 feet

0 250 500  
 Feet

Coordinate System: NAD 1983 2011  
 StatePlane Texas South FIPS 4205 Ft US  
 Projection: Lambert Conformal Conic  
 Datum: NAD 1983 2011  
 Units: Foot US

**Map Details**

- HDD Entry/Exit Points
- Pipeline Centerline
- HDD Pipeline Centerline
- Construction Workspace

**Wetlands and Waterbodies**

- PUB Pond
- Waterbody
- E2EM Wetland
- E2SS Wetland
- E2USP Area
- M1UB Area
- PEM Wetland
- PSS Wetland

**LLOYD**  
 ENGINEERING, INC.