

Figure 24
Proposed Project Detail Map
 Construction, Operation, and
 Decommissioning Procedures
 Bluewater SPM Project
 Bluewater Texas Terminal LLC

1 inch = 500 feet

Coordinate System: NAD 1983 2011
 StatePlane Texas South FIPS 4205 Ft US
 Projection: Lambert Conformal Conic
 Datum: NAD 1983 2011
 Units: Foot US

Map Details

- HDD Entry/Exit Points
- Pipeline Centerline
- HDD Pipeline Centerline
- Construction Workspace

Wetlands and Waterbodies

- PUB Pond
- Waterbody
- E2EM Wetland
- E2SS Wetland
- E2USP Area
- M1UB Area
- PEM Wetland
- PSS Wetland

LOYD
 ENGINEERING, INC.



Figure 25
Proposed Project Detail Map
 Construction, Operation, and
 Decommissioning Procedures
 Bluewater SPM Project
 Bluewater Texas Terminal LLC

1 inch = 500 feet

Coordinate System: NAD 1983 2011
 StatePlane Texas South FIPS 4205 Ft US
 Projection: Lambert Conformal Conic
 Datum: NAD 1983 2011
 Units: Foot US

Map Details

- HDD Entry/Exit Points
- Pipeline Centerline
- HDD Pipeline Centerline
- Construction Workspace

Wetlands and Waterbodies

- PEM Wetland
- PSS Wetland

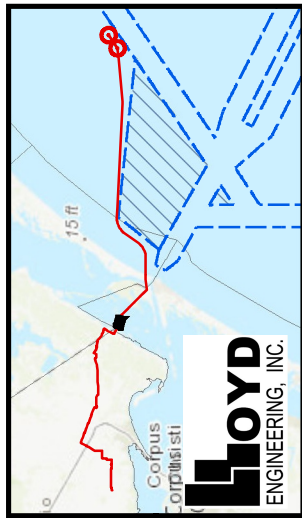
Aquatic Resources

- Algae Bed
- Intertidal Wetland
- Scattered Oyster Shell

Other Resources

- PUB Pond
- Waterbody
- E2EM Wetland
- E2SS Wetland
- E2USP Area
- M1UB Area

LOYD
 ENGINEERING, INC.



Map Details

- HDD Entry/Exit Points
- Pipeline Centerline
- HDD Pipeline Centerline
- Construction Workspace

Wetlands and Waterbodies

- PEM Wetland
- PSS Wetland

Aquatic Resources

- PUB Pond
- Waterbody
- E2EM Wetland
- E2SS Wetland
- E2USP Area
- M1UB Area
- Algae Bed
- Intertidal Wetland
- Scattered Oyster Shell
- Seagrass
- Shell Hash

1 inch = 500 feet

0 250 500 Feet

Coordinate System: NAD 1983 2011
 StatePlane Texas South FIPS 4205 Ft US
 Projection: Lambert Conformal Conic
 Datum: NAD 1983 2011
 Units: Foot US

Figure 26
Proposed Project Detail Map
 Construction, Operation, and
 Decommissioning Procedures
 Bluewater SPM Project
 Bluewater Texas Terminal LLC

Date: May 09, 2019





Figure 27
Proposed Project Detail Map
 Construction, Operation, and
 Decommissioning Procedures
 Bluewater SPM Project
 Bluewater Texas Terminal LLC
 Date: May 09, 2019

1 inch = 500 feet

0 250 500
 Feet

Coordinate System: NAD 1983 2011
 StatePlane Texas South FIPS 4205 Ft US
 Projection: Lambert Conformal Conic
 Datum: NAD 1983 2011
 Units: Foot US

Map Details

- HDD Entry/Exit Points
- Pipeline Centerline
- HDD Pipeline Centerline
- Construction Workspace
- Wetlands and Waterbodies
- PEM Wetland
- PSS Wetland

Aquatic Resources

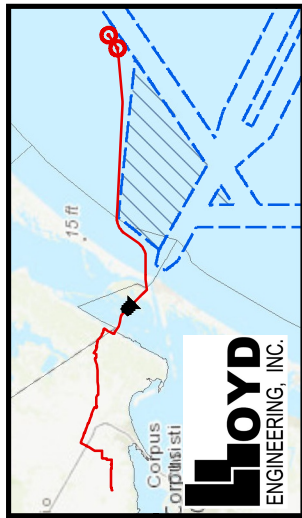
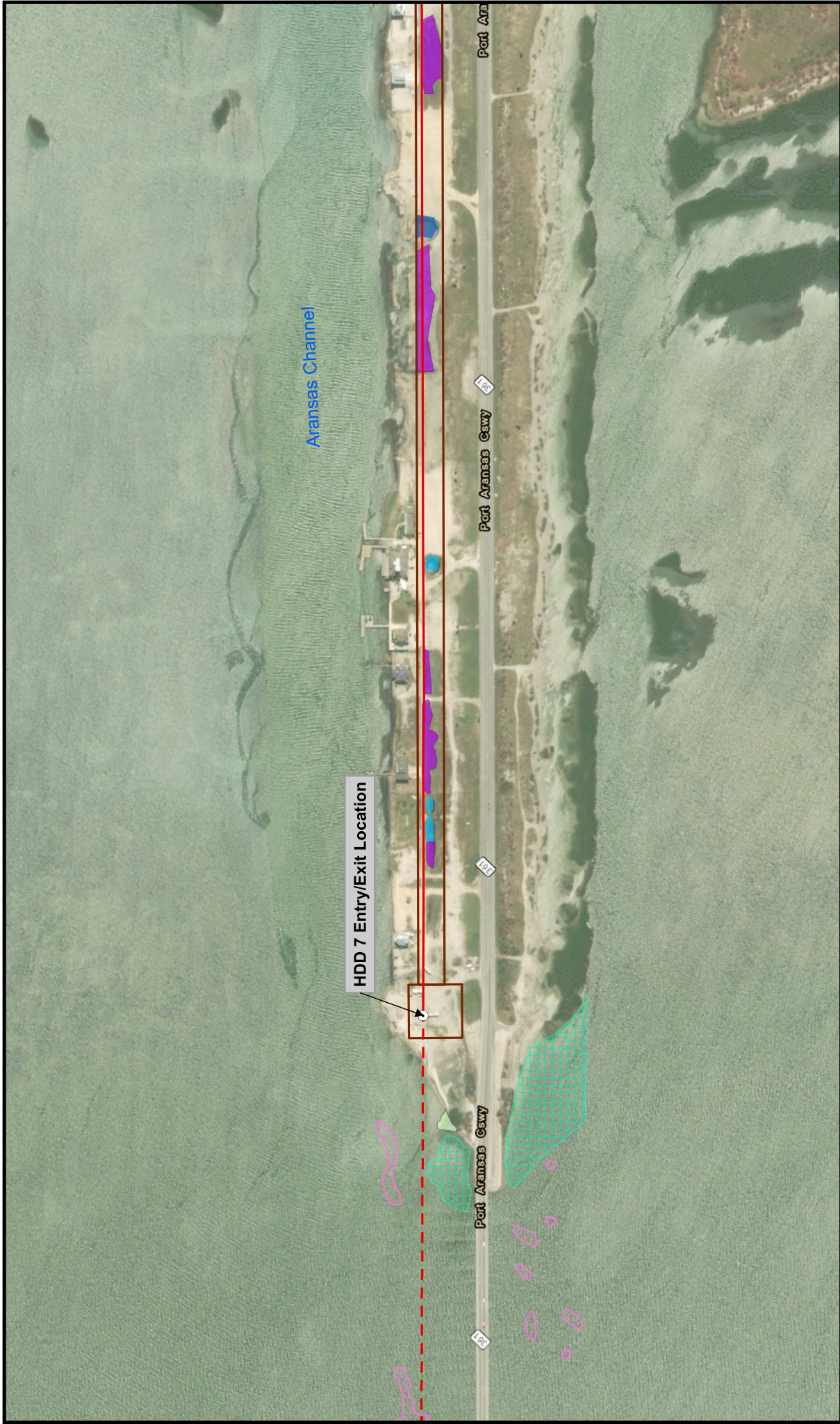
- Algae Bed
- Intertidal Wetland
- Scattered Oyster Shell
- Seagrass
- Shell Hash

Waterbodies

- PUB Pond
- Waterbody
- E2EM Wetland
- E2SS Wetland
- E2USP Area
- M1UB Area

Corpus Christi, TX

LOYD
 ENGINEERING, INC.



Map Details

- HDD Entry/Exit Points
- Pipeline Centerline
- HDD Pipeline Centerline
- Construction Workspace
- Wetlands and Waterbodies
- PEM Wetland
- PSS Wetland

Aquatic Resources

- PUB Pond
- Waterbody
- E2EM Wetland
- E2SS Wetland
- E2USP Area
- M1UB Area
- Algae Bed
- Intertidal Wetland
- Scattered Oyster Shell
- Seagrass
- Shell Hash

1 inch = 500 feet

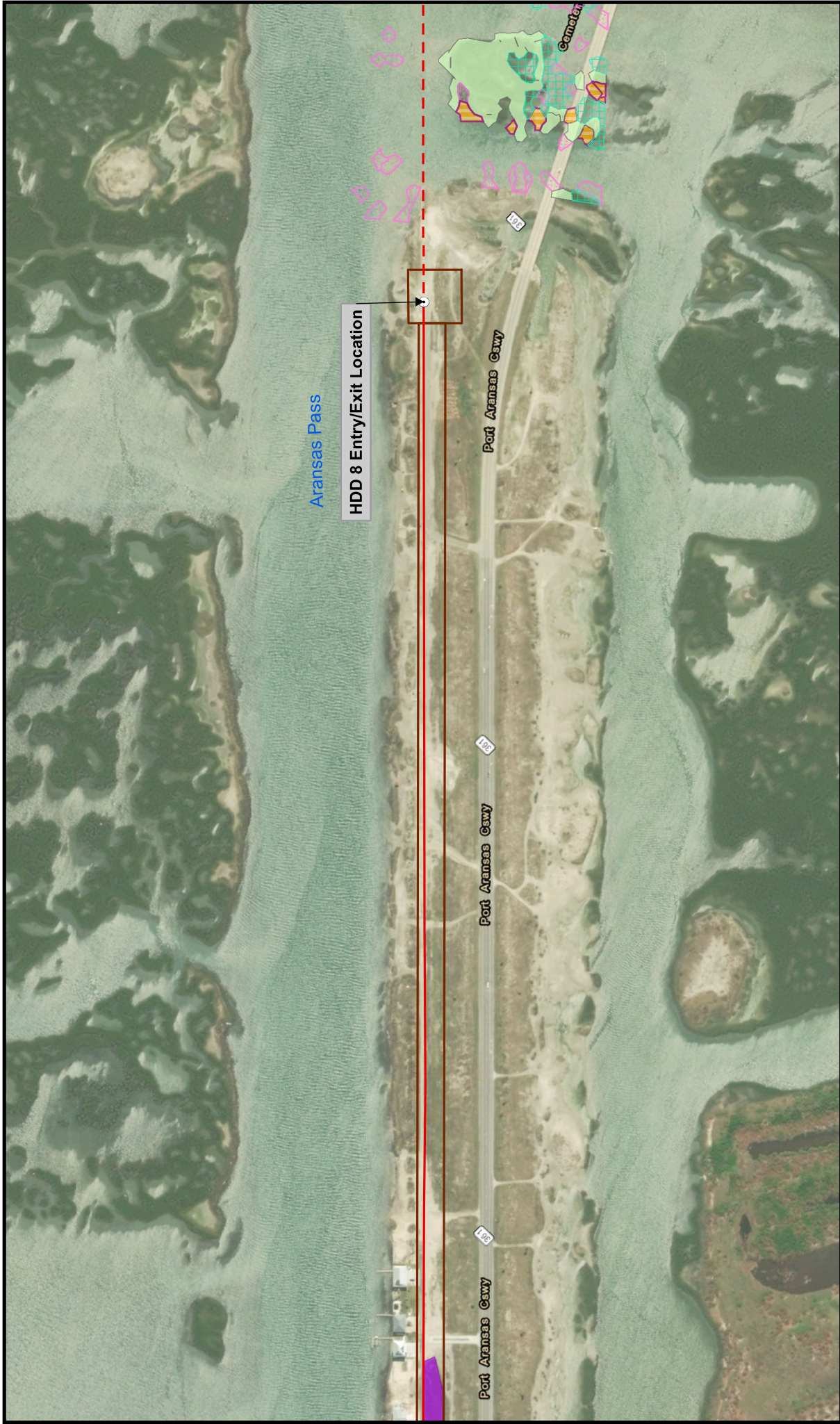
0 250 500 Feet

Coordinate System: NAD 1983 2011
 StatePlane Texas South FIPS 4205 Ft US
 Projection: Lambert Conformal Conic
 Datum: NAD 1983 2011
 Units: Foot US

Figure 28
Proposed Project Detail Map
 Construction, Operation, and
 Decommissioning Procedures
 Bluewater SPM Project
 Bluewater Texas Terminal LLC

Date: May 09, 2019





Aransas Pass

HDD 8 Entry/Exit Location

Port Aransas Cswy

185

Port Aransas Cswy

185

Port Aransas Cswy

185

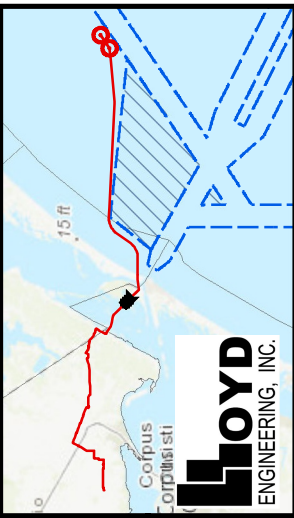
Port Aransas Cswy

185

Port Aransas Cswy

185

Port Aransas Cswy



Map Details

- HDD Entry/Exit Points
- Pipeline Centerline
- HDD Pipeline Centerline
- Construction Workspace
- Wetlands and Waterbodies**
- PEM Wetland
- PSS Wetland

Aquatic Resources

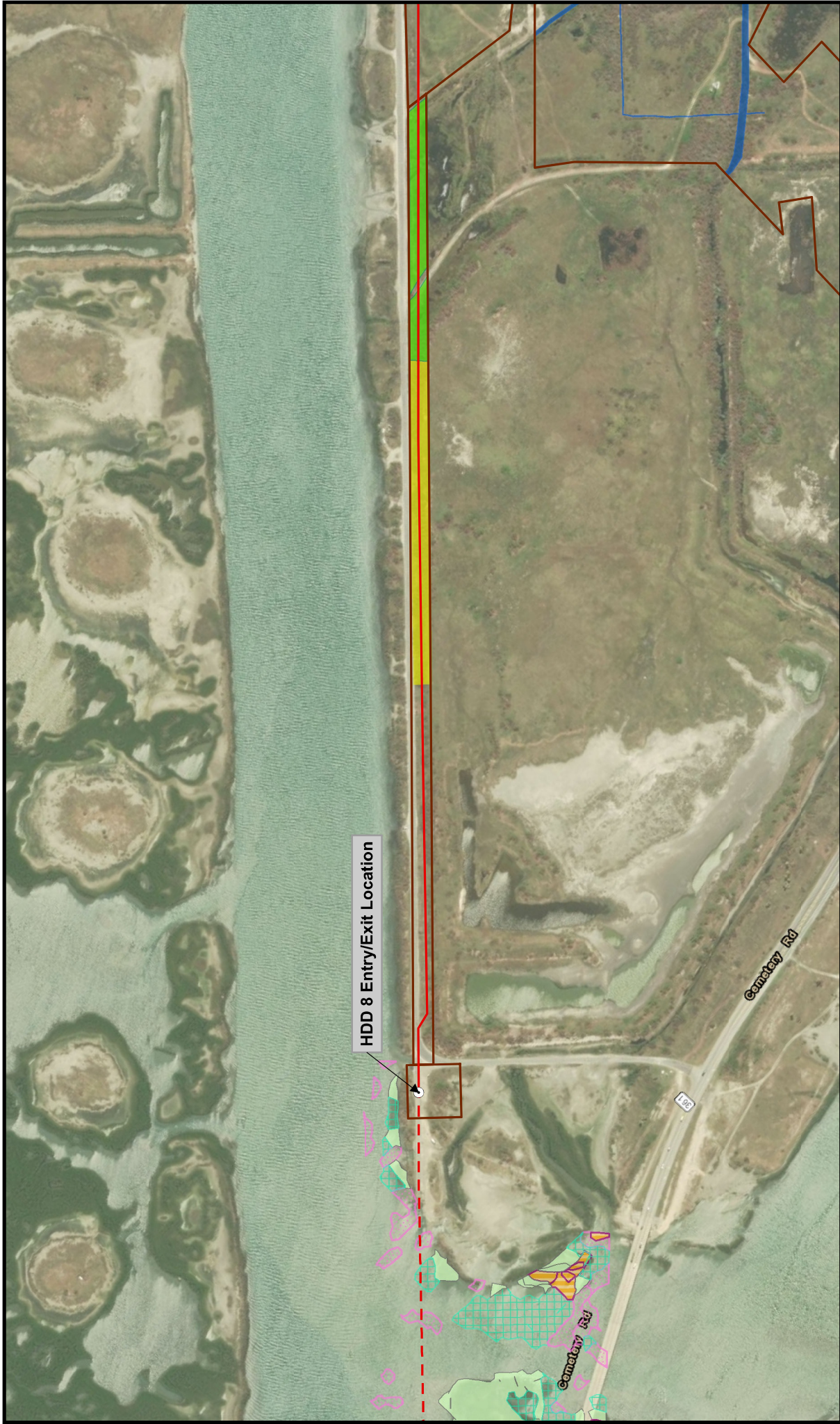
- PUB Pond
- Waterbody
- E2EM Wetland
- E2SS Wetland
- E2USP Area
- M1UB Area
- Algae Bed
- Intertidal Wetland
- Scattered Oyster Shell
- Seagrass
- Shell Hash

1 inch = 500 feet

0 250 500 Feet

Coordinate System: NAD 1983 2011
 StatePlane Texas South FIPS 4205 Ft US
 Projection: Lambert Conformal Conic
 Datum: NAD 1983 2011
 Units: Foot US

Figure 29
Proposed Project Detail Map
 Construction, Operation, and
 Decommissioning Procedures
 Bluewater SPM Project
 Bluewater Texas Terminal LLC
 Date: May 09, 2019



HDD 8 Entry/Exit Location

Figure 30
Proposed Project Detail Map
 Construction, Operation, and
 Decommissioning Procedures
 Bluewater SPM Project
 Bluewater Texas Terminal LLC

Date: May 09, 2019

1 inch = 500 feet

Coordinate System: NAD 1983 2011
 StatePlane Texas South FIPS 4205 Ft US
 Projection: Lambert Conformal Conic
 Datum: NAD 1983 2011
 Units: Foot US

Map Details

- HDD Entry/Exit Points
- Pipeline Centerline
- HDD Pipeline Centerline
- Construction Workspace
- Wetlands and Waterbodies
- PEM Wetland
- PSS Wetland

Aquatic Resources

- Algae Bed
- Intertidal Wetland
- Scattered Oyster Shell
- Seagrass
- Shell Hash

Waterbodies

- PUB Pond
- Waterbody
- E2EM Wetland
- E2SS Wetland
- E2USP Area
- M1UB Area

Corpus Christi, TX

LOYD
 ENGINEERING, INC.

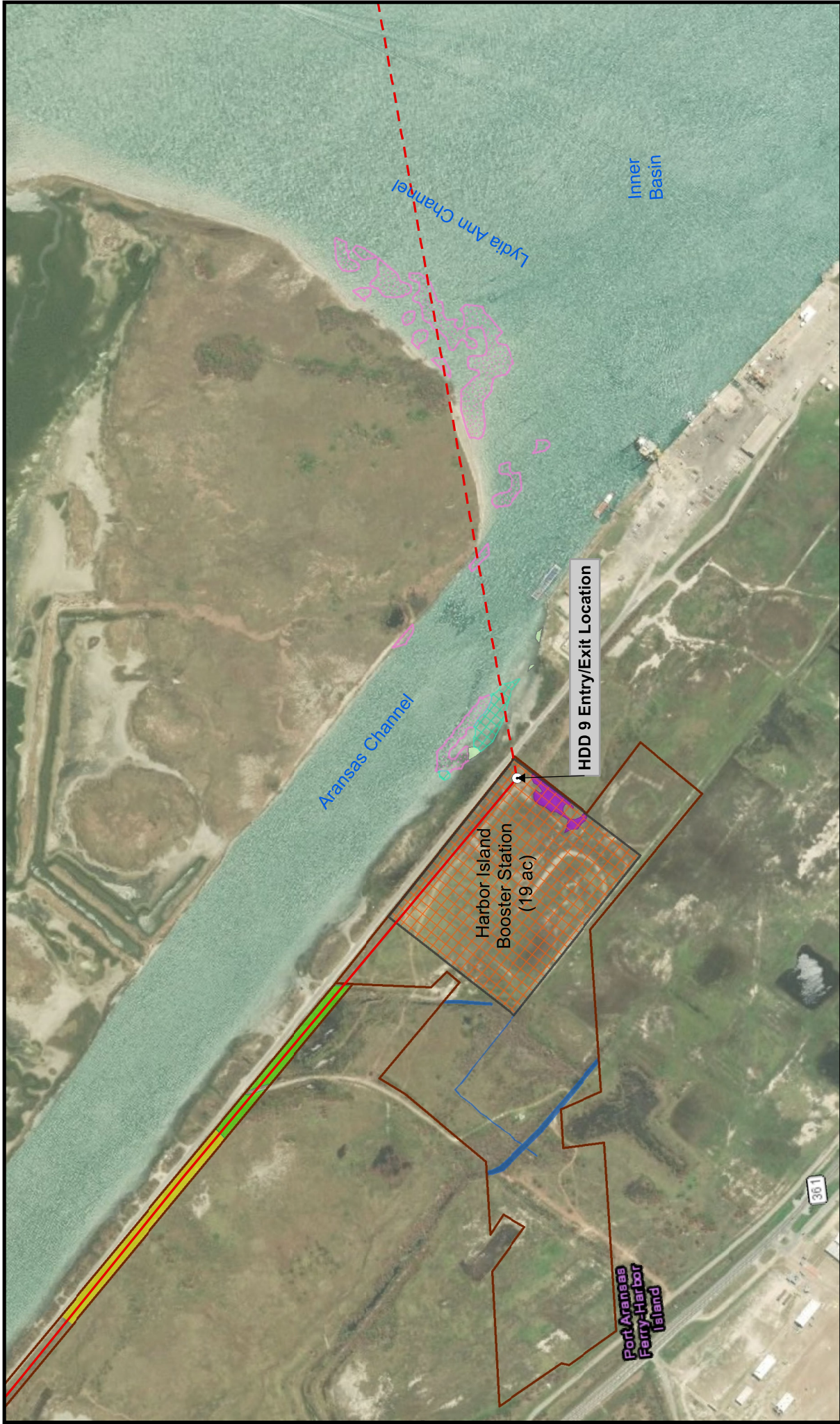


Figure 31
Proposed Project Detail Map
 Construction, Operation, and
 Decommissioning Procedures
 Bluewater SPM Project
 Bluewater Texas Terminal LLC
 Date: May 09, 2019

1 inch = 670 feet
 0 337.5 675 Feet

Coordinate System: NAD 1983 2011
 StatePlane Texas South FIPS 4205 Ft US
 Projection: Lambert Conformal Conic
 Datum: NAD 1983 2011
 Units: Foot US

Map Details

- HDD Entry/Exit Points
- Pipeline Centerline
- HDD Pipeline Centerline
- Harbor Island Booster Station
- Construction Workspace
- Wetlands and Waterbodies
- PEM Wetland

Aquatic Resources

- Algae Bed
- Intertidal Wetland
- Scattered Oyster Shell
- Seagrass
- Shell Hash

Wetlands

- PSS Wetland
- PUB Pond
- Waterbody
- EZEM Wetland
- EZSS Wetland
- EZUSP Area
- M1UB Area

LLOYD ENGINEERING, INC.



Figure 32
Proposed Project Detail Map
 Construction, Operation, and
 Decommissioning Procedures
 Bluewater SPM Project
 Bluewater Texas Terminal LLC

Date: May 09, 2019

1 inch = 500 feet

0 250 500 Feet

Coordinate System: NAD 1983 2011
 StatePlane Texas South FIPS 4205 Ft US
 Projection: Lambert Conformal Conic
 Datum: NAD 1983 2011
 Units: Foot US

Map Details

- HDD Entry/Exit Points
- Pipeline Centerline
- HDD Pipeline Centerline
- Construction Workspace
- Wetlands and Waterbodies
- PEM Wetland
- PSS Wetland

Aquatic Resources

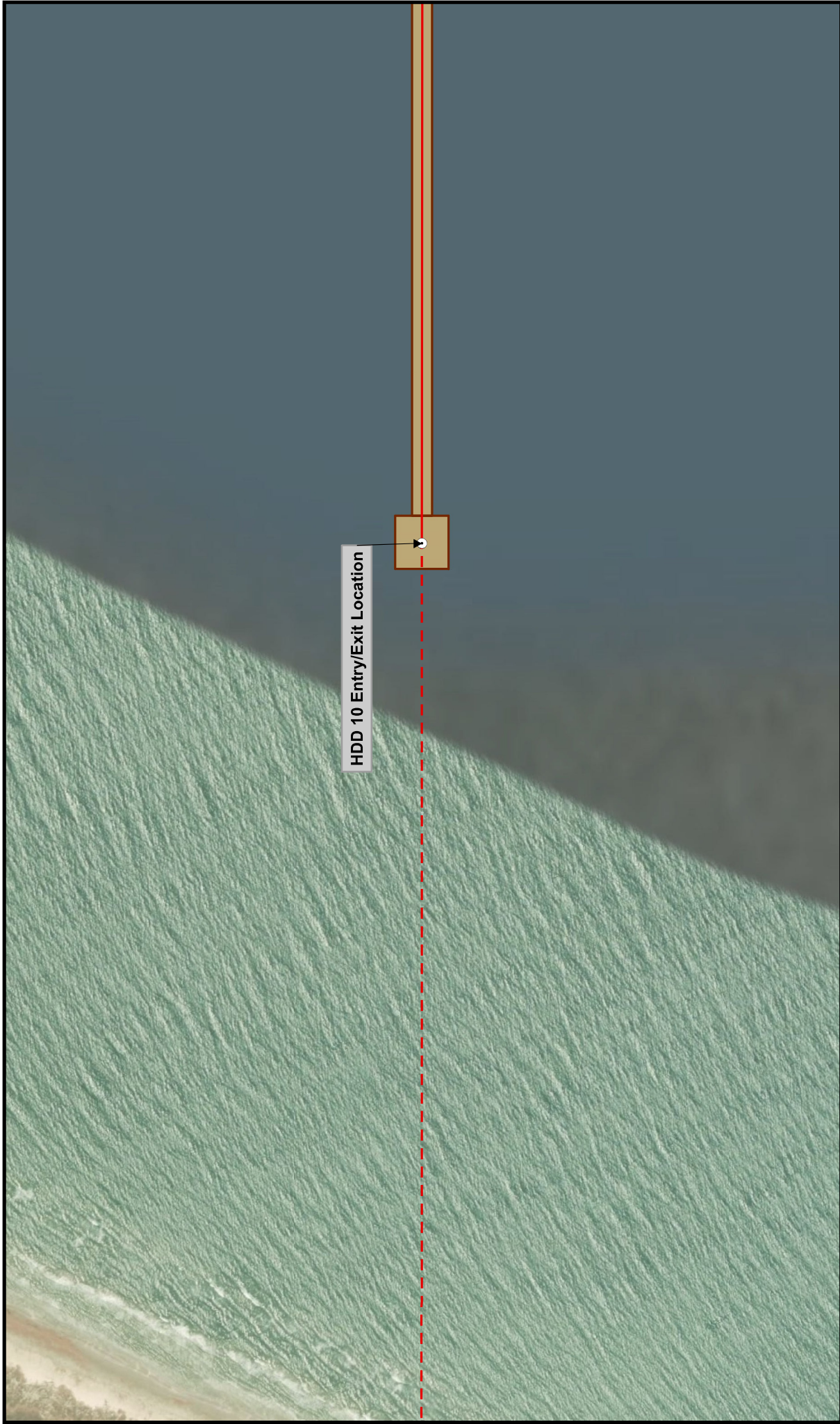
- Algae Bed
- Intertidal Wetland
- Scattered Oyster Shell
- Seagrass
- Shell Hash

Waterbodies

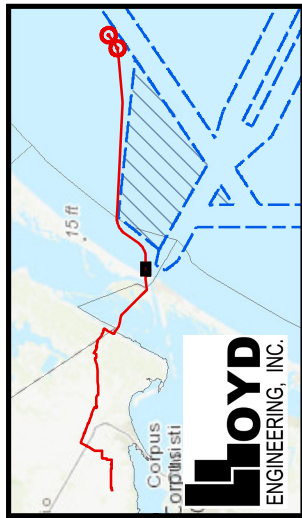
- PUB Pond
- Waterbody
- E2EM Wetland
- E2SS Wetland
- E2USP Area
- M1UB Area

Corpus Christi

LOYD
 ENGINEERING, INC.



HDD 10 Entry/Exit Location



Map Details

| | |
|--|--------------------------|
| | HDD Entry/Exit Points |
| | Pipeline Centerline |
| | HDD Pipeline Centerline |
| | Construction Workspace |
| | Wetlands and Waterbodies |
| | PEM Wetland |
| | PSS Wetland |

| | | | |
|--|--------------|--|------------------------|
| | PUB Pond | | Algae Bed |
| | Waterbody | | Intertidal Wetland |
| | E2EM Wetland | | Scattered Oyster Shell |
| | E2SS Wetland | | Seagrass |
| | E2USP Area | | Shell Hash |
| | M1UB Area | | |

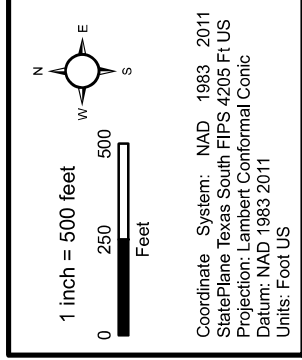
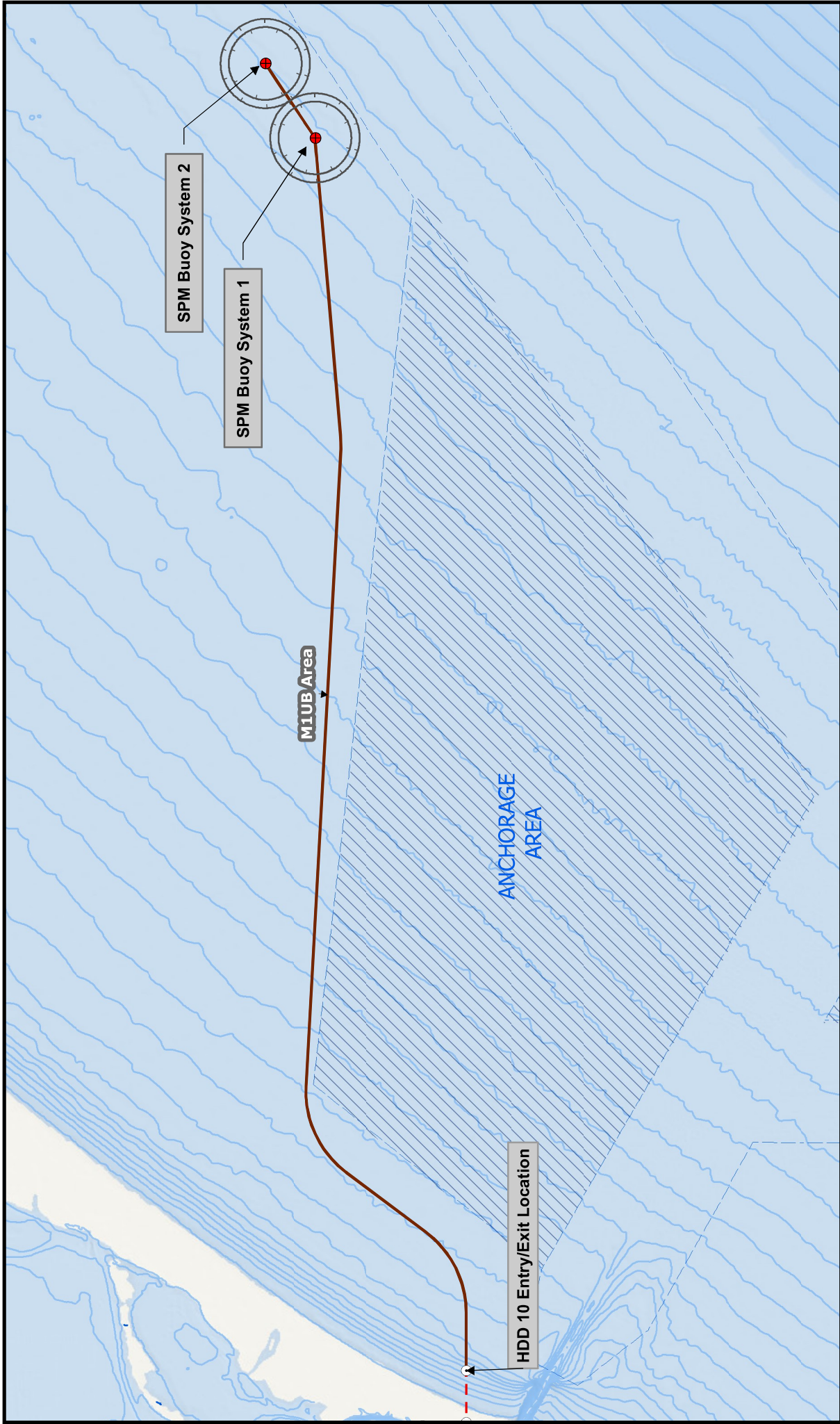


Figure 33
Proposed Project Detail Map
 Construction, Operation, and
 Decommissioning Procedures
 Bluewater SPM Project
 Bluewater Texas Terminal LLC
 Date: May 09, 2019



SPM Buoy System 2

SPM Buoy System 1

M1UB Area

ANCHORAGE AREA

HDD 10 Entry/Exit Location

Figure 34
Project Detail Map
 Construction, Operation, and Decommissioning Procedures
 Bluewater SPM Project
 Bluewater Texas Terminal LLC
 Date: May 09, 2019

1 inch = 2.5 miles

Miles

Coordinate System: NAD 1983 2011
 StatePlane Texas South FIPS 4205 Ft US
 Projection: Lambert Conformal Conic
 Datum: NAD 1983 2011
 Units: Foot US

Map Details

- SPM Buoy System
- SPM Buoy ATBA and Safety Zones
- HDD Entry/Exit Points
- Construction Workspace
- Pipeline Centerline
- HDD Pipeline Centerline
- Navigational Fairways
- Anchorage Areas
- Bathymetry Contours (m)
- Impacted WOUS**
- M1UB Area

LOYD
 ENGINEERING, INC.

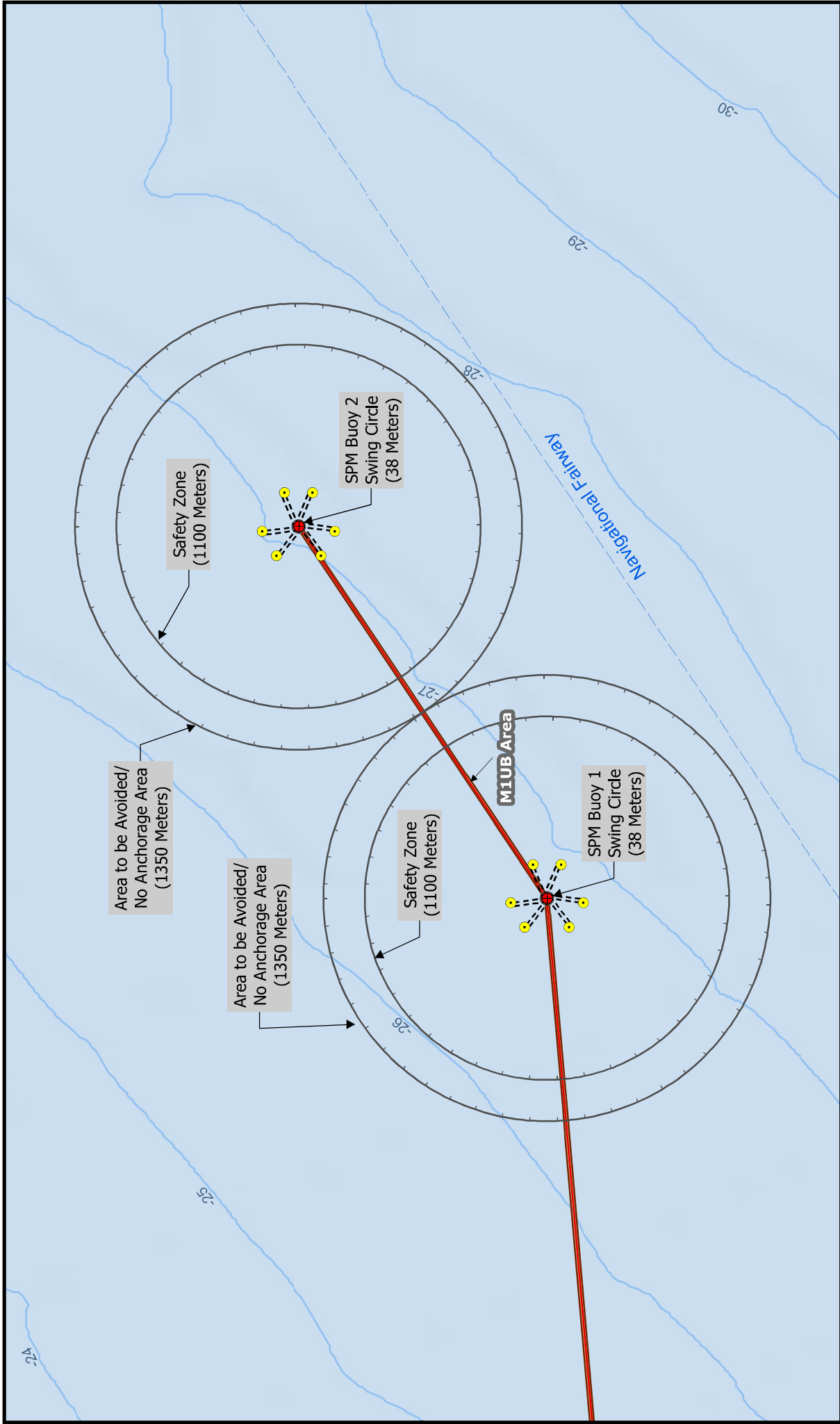


Figure 35
Proposed Project Detail Map
 Construction, Operation, and
 Decommissioning Procedures
 Bluewater SPM Project
 Bluewater Texas Terminal LLC
 Date: May 09, 2019

1 inch = 0.5 miles
 0 0.25 0.5 Miles

Coordinate System: NAD 1983 2011
 StatePlane Texas South FIPS 4205 Ft US
 Projection: Lambert Conformal Conic
 Datum: NAD 1983 2011
 Units: Foot US

Map Details

- SPM Buoy System
- CALM Anchor Pile Location
- CALM Anchor Chain
- SPM Buoy ATBA and Safety Zones
- Pipeline Centerline
- Construction Workspace
- Navigational Fairways
- Bathymetry Contours (m)
- Impacted WOUS
- M1UB Area

LOYD
 ENGINEERING, INC.

ATTACHMENT 2 – ALTERNATIVE PROJECT FIGURES

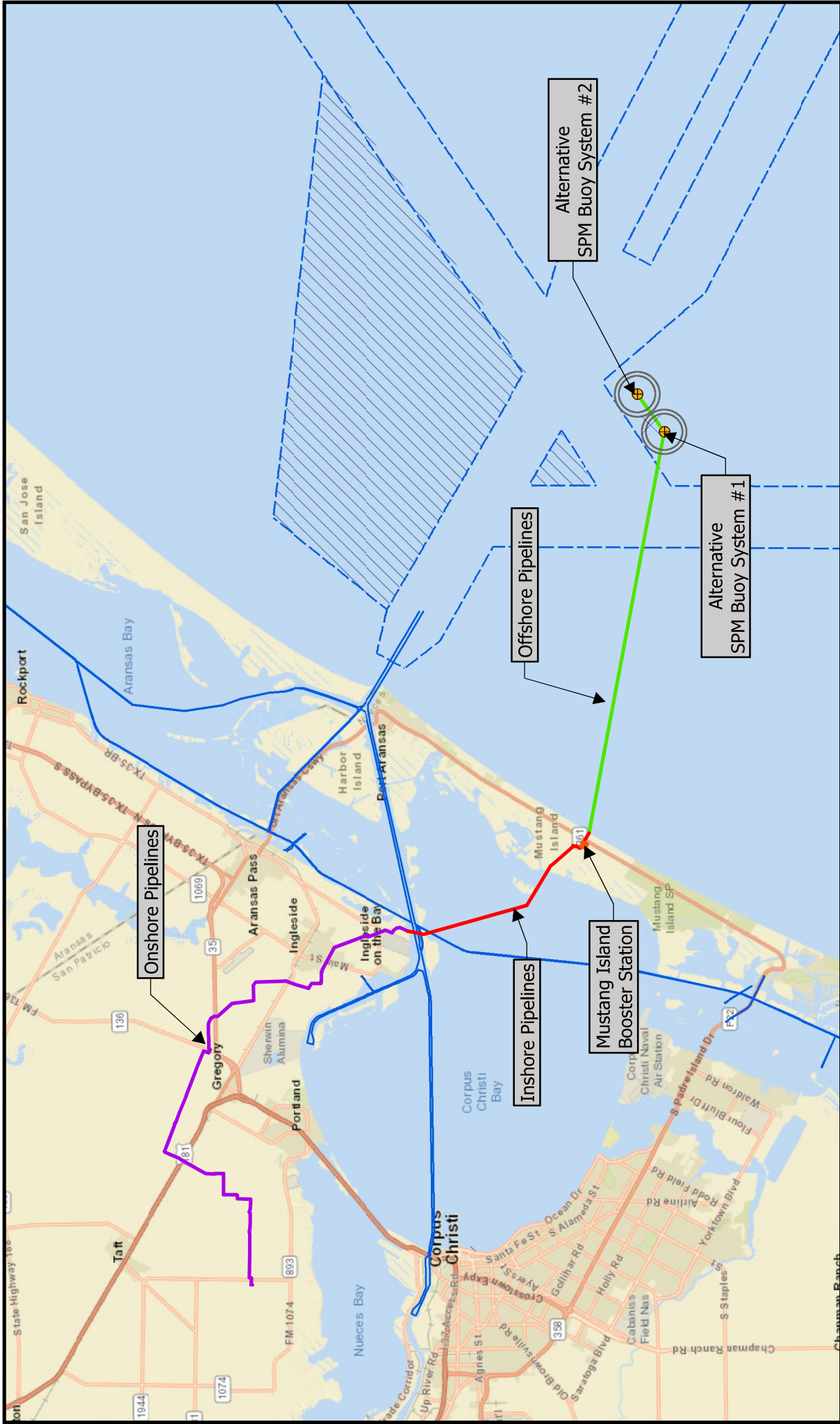
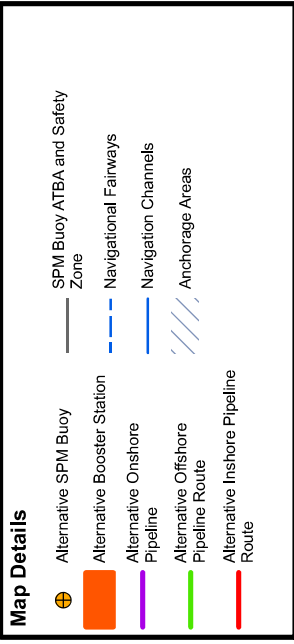
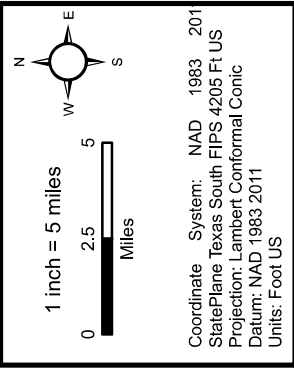


Figure 2
Alternative Project Component Map
 Construction, Operation, and Decommissioning Procedures
 Bluewater SPM Project
 Bluewater Texas Terminal LLC
 Date: May 09, 2019



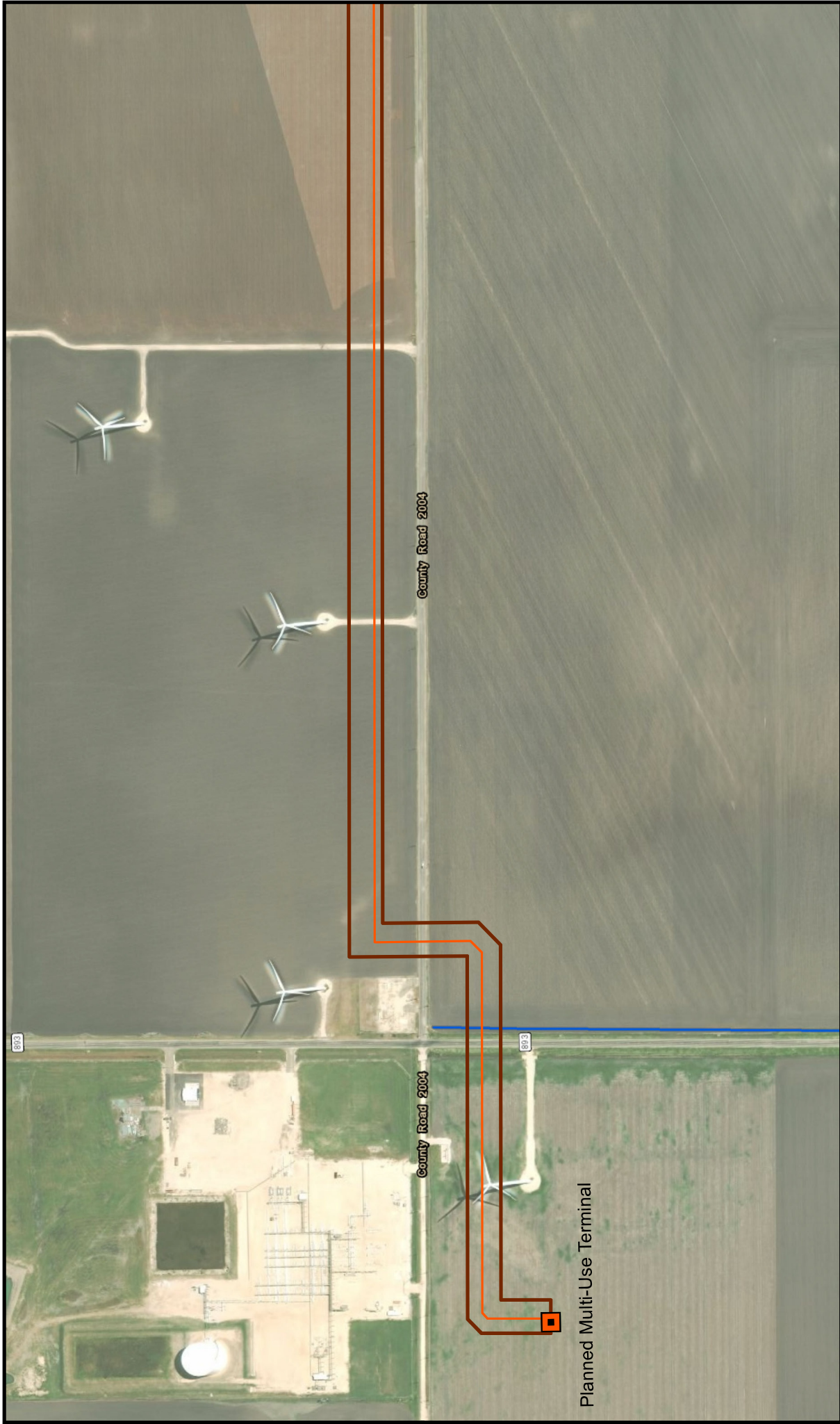


Figure 4
Alternative Project Detail Map
 Construction, Operation, and
 Decommissioning Procedures
 Bluewater SPM Project
 Bluewater Texas Terminal LLC
 Date: May 10, 2019

1 inch = 500 feet

Coordinate System: NAD 1983 2011
 StatePlane Texas South FIPS 4205 Ft US
 Projection: Lambert Conformal Conic
 Datum: NAD 1983 2011
 Units: Foot US

Map Details

- Planned Multi-Use Terminal
- Pipeline Centerline
- HDD Pipeline Centerline
- Construction Workspaces
- Waterways

Alternative Project Pipelines

- Pipeline Centerline
- HDD Pipeline Centerline
- Construction Workspaces
- Waterways

NWI Wetlands

- Estuarine and Marine Wetland
- Freshwater Emergent Wetland
- Freshwater Forested/Shrub Wetland
- Freshwater Pond
- Lake
- Riverine

Corpus Christi
 Corpus Christi
 Corpus Christi
 Corpus Christi

LOYD
 ENGINEERING, INC.



Figure 5
Alternative Project Detail Map
 Construction, Operation, and
 Decommissioning Procedures
 Bluewater SPM Project
 Bluewater Texas Terminal LLC

Date: May 10, 2019

1 inch = 500 feet

Coordinate System: NAD 1983 2011
 StatePlane Texas South FIPS 4205 Ft US
 Projection: Lambert Conformal Conic
 Datum: NAD 1983 2011
 Units: Foot US

Map Details

- HDD Entry/Exit Points
- Alternative Project Pipelines**
 - Pipeline Centerline
 - HDD Pipeline Centerline
 - Construction Workspaces
 - NHD Waters
- NWI Wetlands**
 - Estuarine and Marine Wetland
 - Freshwater Emergent Wetland
 - Freshwater Forested/Shrub Wetland
 - Freshwater Pond
 - Lake
 - Riverine

LOYD
 ENGINEERING, INC.

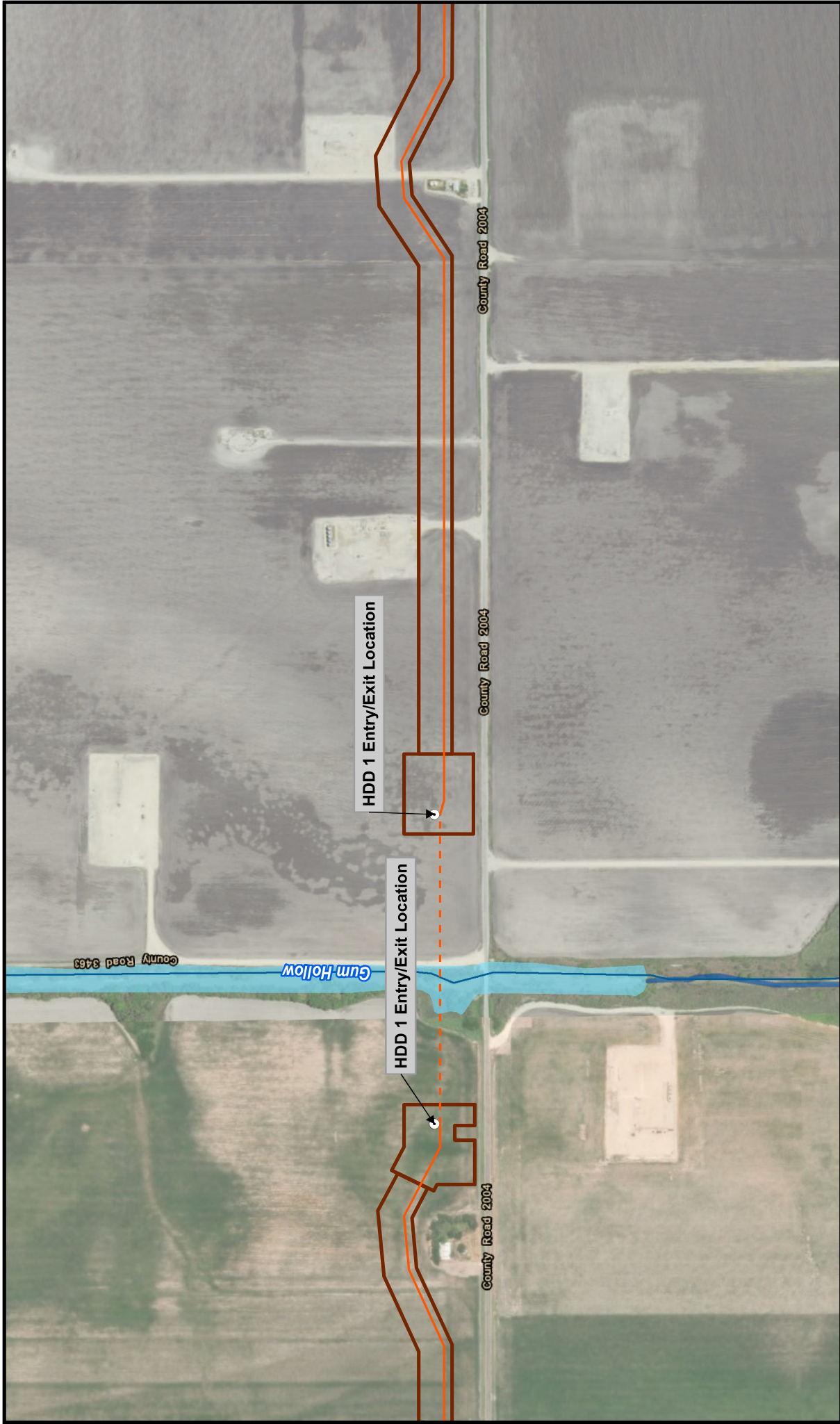


Figure 6
Alternative Project Detail Map
 Construction, Operation, and
 Decommissioning Procedures
 Bluewater SPM Project
 Bluewater Texas Terminal LLC

Date: May 10, 2019

1 inch = 500 feet

0 250 500 Feet

Coordinate System: NAD 1983 2011
 StatePlane Texas South FIPS 4205 Ft US
 Projection: Lambert Conformal Conic
 Datum: NAD 1983 2011
 Units: Foot US

Map Details

- HDD Entry/Exit Points

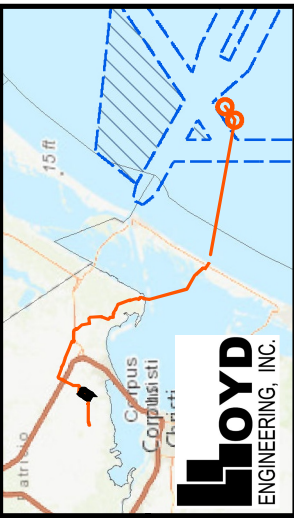
Alternative Project Pipelines

- Pipeline Centerline
- HDD Pipeline Centerline
- Construction Workspaces
- NHD Waters

NWI Wetlands

- Estuarine and Marine Wetland
- Freshwater Emergent Wetland
- Freshwater Forested/Strub Wetland
- Freshwater Pond
- Lake
- Riverine

15 ft



- Map Details**
- HDD Entry/Exit Points
- Alternative Project Pipelines**
- Pipeline Centerline
 - - - HDD Pipeline Centerline
 - ▭ Construction Workspaces
 - NHD Waters

- NWI Wetlands**
- Estuarine and Marine Wetland
 - Freshwater Emergent Wetland
 - Freshwater Forested/Strub Wetland
 - Freshwater Pond
 - Lake
 - Riverine

1 inch = 500 feet

Coordinate System: NAD 1983 2011
 StatePlane Texas South FIPS 4205 Ft US
 Projection: Lambert Conformal Conic
 Datum: NAD 1983 2011
 Units: Foot US

Figure 7
Alternative Project Detail Map
 Construction, Operation, and
 Decommissioning Procedures
 Bluewater SPM Project
 Bluewater Texas Terminal LLC
 Date: May 10, 2019