



**Figure 8**  
**Alternative Project Detail Map**  
 Construction, Operation, and  
 Decommissioning Procedures  
 Bluewater SPM Project  
 Bluewater Texas Terminal LLC

1 inch = 500 feet  
 0 250 500  
 Feet

Coordinate System: NAD 1983 2011  
 StatePlane Texas South FIPS 4205 Ft US  
 Projection: Lambert Conformal Conic  
 Datum: NAD 1983 2011  
 Units: Foot US

**Map Details**

- HDD Entry/Exit Points

**Alternative Project Pipelines**

- Pipeline Centerline
- HDD Pipeline Centerline
- Construction Workspaces
- NHD Waters

**NWI Wetlands**

- Estuarine and Marine Wetland
- Freshwater Emergent Wetland
- Freshwater Forested/Strub Wetland
- Freshwater Pond
- Lake
- Riverine

**LOYD**  
 ENGINEERING, INC.

Date: May 10, 2019



**Figure 9**  
**Alternative Project Detail Map**  
 Construction, Operation, and  
 Decommissioning Procedures  
 Bluewater SPM Project  
 Bluewater Texas Terminal LLC

Date: May 10, 2019

1 inch = 500 feet

0 250 500  
Feet

Coordinate System: NAD 1983 2011  
 StatePlane Texas South FIPS 4205 Ft US  
 Projection: Lambert Conformal Conic  
 Datum: NAD 1983 2011  
 Units: Foot US

**Map Details**

- HDD Entry/Exit Points
- Pipeline Centerline
- HDD Pipeline Centerline
- Construction Workspaces
- NHD Waters

**Alternative Project Pipelines**

- Pipeline Centerline
- HDD Pipeline Centerline
- Construction Workspaces
- NHD Waters

**NWI Wetlands**

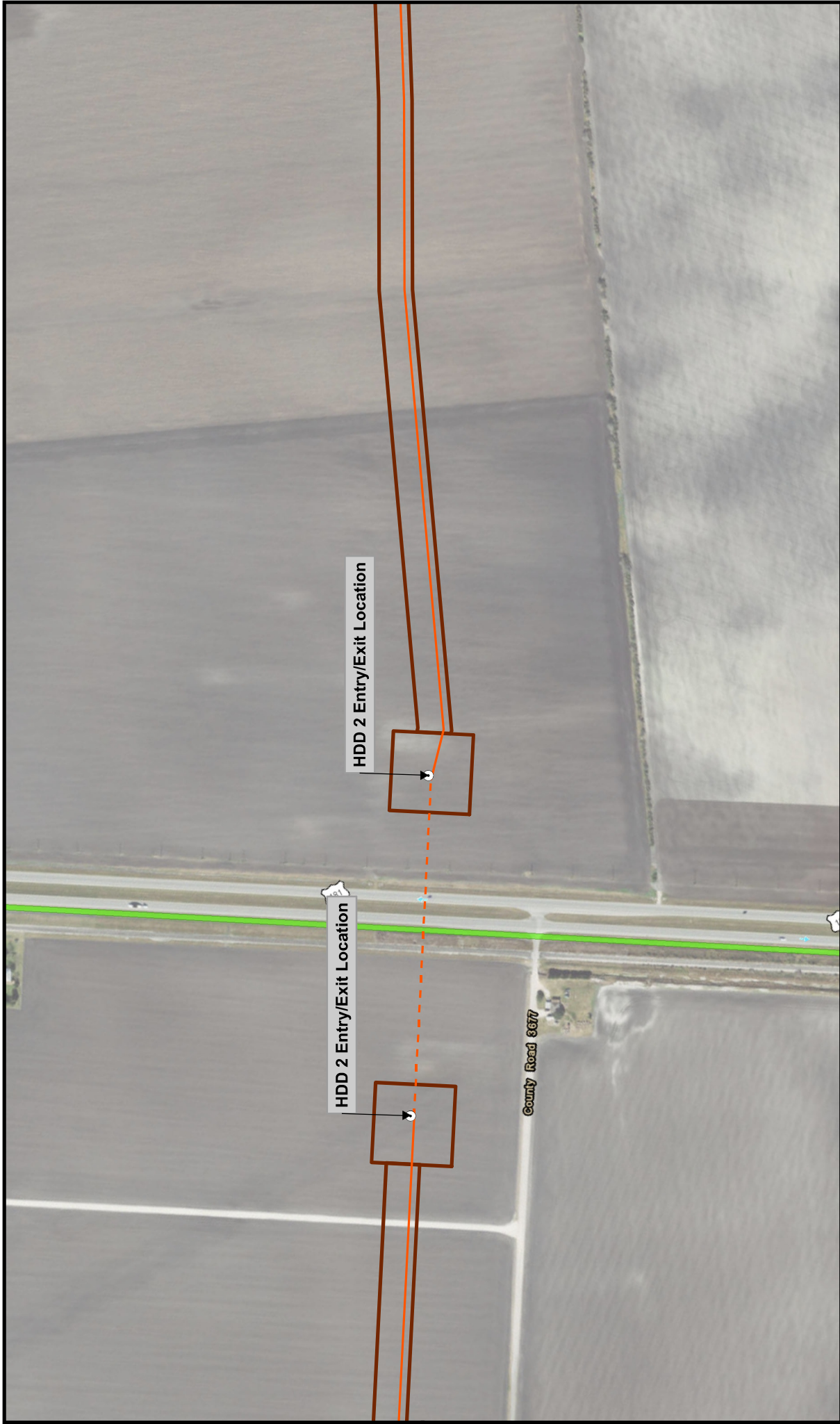
- Estuarine and Marine Wetland
- Freshwater Emergent Wetland
- Freshwater Forested/Strub Wetland
- Freshwater Pond
- Lake
- Riverine

15 ft

County Road 1612

County Road 3677

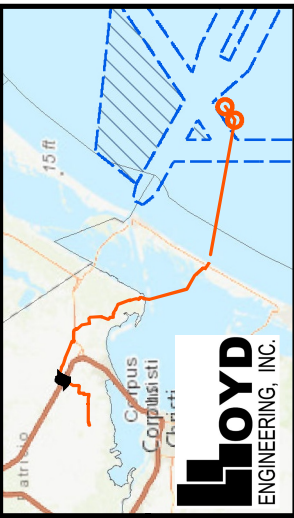
**LOYD**  
 ENGINEERING, INC.



HDD 2 Entry/Exit Location

HDD 2 Entry/Exit Location

County Road 8677



- Map Details**
- HDD Entry/Exit Points
  - Alternative Project Pipelines**
    - Pipeline Centerline
    - - - HDD Pipeline Centerline
    - Construction Workspaces
    - NHD Waters

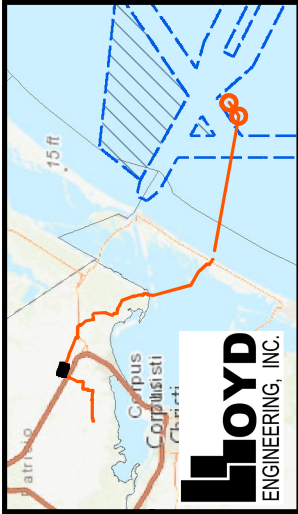
- NWI Wetlands**
- Estuarine and Marine Wetland
  - Freshwater Emergent Wetland
  - Freshwater Forested/Shrub Wetland
  - Freshwater Pond
  - Lake
  - Riverine

1 inch = 500 feet

Coordinate System: NAD 1983 2011  
 StatePlane Texas South FIPS 4205 Ft US  
 Projection: Lambert Conformal Conic  
 Datum: NAD 1983 2011  
 Units: Foot US

**Figure 10**  
**Alternative Project Detail Map**  
 Construction, Operation, and  
 Decommissioning Procedures  
 Bluewater SPM Project  
 Bluewater Texas Terminal LLC

Date: May 10, 2019



**Map Details**

- HDD Entry/Exit Points
- Pipeline Centerline
- - - HDD Pipeline Centerline
- Construction Workspaces
- NHD Waters

**Alternative Project Pipelines**

- Estuarine and Marine Wetland
- Freshwater Emergent Wetland
- Freshwater Forested/Strub Wetland
- Freshwater Pond
- Lake
- Riverine

**NWI Wetlands**

- Estuarine and Marine Wetland
- Freshwater Emergent Wetland
- Freshwater Forested/Strub Wetland
- Freshwater Pond
- Lake
- Riverine

1 inch = 504.19 feet

Coordinate System: NAD 1983 2011  
 StatePlane Texas South FIPS 4205 Ft US  
 Projection: Lambert Conformal Conic  
 Datum: NAD 1983 2011  
 Units: Foot US

**Figure 11**  
**Alternative Project Detail Map**  
 Construction, Operation, and  
 Decommissioning Procedures  
 Bluewater SPM Project  
 Bluewater Texas Terminal LLC

Date: May 10, 2019



**Figure 12**  
**Alternative Project Detail Map**  
 Construction, Operation, and  
 Decommissioning Procedures  
 Bluewater SPM Project  
 Bluewater Texas Terminal LLC

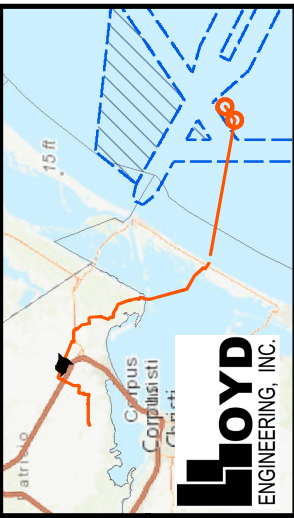
Date: May 10, 2019

1 inch = 500 feet

Coordinate System: NAD 1983 2011  
 StatePlane Texas South FIPS 4205 Ft US  
 Projection: Lambert Conformal Conic  
 Datum: NAD 1983 2011  
 Units: Foot US

**Map Details**

- HDD Entry/Exit Points
- Alternative Project Pipelines**
  - Pipeline Centerline
  - HDD Pipeline Centerline
  - Construction Workspaces
  - NHD Waters
- NWI Wetlands**
  - Estuarine and Marine Wetland
  - Freshwater Emergent Wetland
  - Freshwater Forested/Strub Wetland
  - Freshwater Pond
  - Lake
  - Riverine

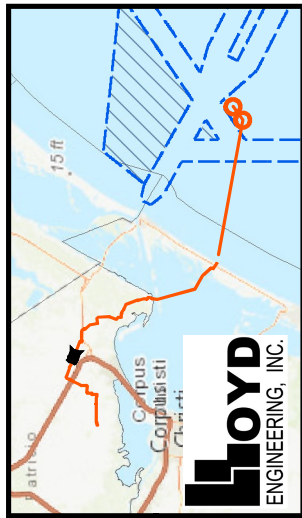




County Road 1722

County Road 1722

County Road 1722

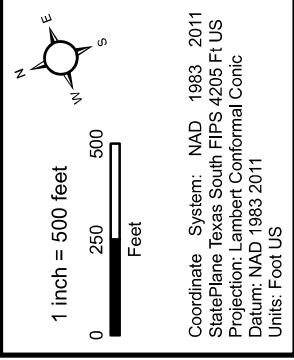


**Map Details**

- HDD Entry/Exit Points
- Pipeline Centerline
- - - HDD Pipeline Centerline
- Construction Workspaces
- NHD Waters

**NWI Wetlands**

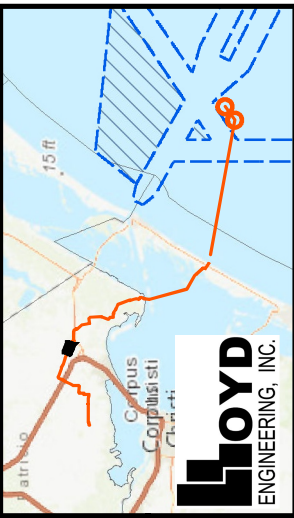
- Estuarine and Marine Wetland
- Freshwater Emergent Wetland
- Freshwater Forested/Strub Wetland
- Freshwater Pond
- Lake
- Riverine



Coordinate System: NAD 1983 2011  
 StatePlane Texas South FIPS 4205 Ft US  
 Projection: Lambert Conformal Conic  
 Datum: NAD 1983 2011  
 Units: Foot US

**Figure 13**  
**Alternative Project Detail Map**  
 Construction, Operation, and  
 Decommissioning Procedures  
 Bluewater SPM Project  
 Bluewater Texas Terminal LLC

Date: May 10, 2019



- Map Details**
- HDD Entry/Exit Points
- Alternative Project Pipelines**
- Pipeline Centerline
  - · - · HDD Pipeline Centerline
  - ▭ Construction Workspaces
  - NHD Waters

- NWI Wetlands**
- Estuarine and Marine Wetland
  - Freshwater Emergent Wetland
  - Freshwater Forested/Shrub Wetland
  - Freshwater Pond
  - Lake
  - Riverine

1 inch = 500 feet

Coordinate System: NAD 1983 2011  
 StatePlane Texas South FIPS 4205 Ft US  
 Projection: Lambert Conformal Conic  
 Datum: NAD 1983 2011  
 Units: Foot US

**Figure 14**  
**Alternative Project Detail Map**  
 Construction, Operation, and  
 Decommissioning Procedures  
 Bluewater SPM Project  
 Bluewater Texas Terminal LLC

Date: May 10, 2019



**Figure 15**  
**Alternative Project Detail Map**  
 Construction, Operation, and  
 Decommissioning Procedures  
 Bluewater SPM Project  
 Bluewater Texas Terminal LLC  
 Date: May 10, 2019

1 inch = 500 feet

0 250 500 Feet

Coordinate System: NAD 1983 2011  
 StatePlane Texas South FIPS 4205 Ft US  
 Projection: Lambert Conformal Conic  
 Datum: NAD 1983 2011  
 Units: Foot US

**Map Details**

- HDD Entry/Exit Points
- Pipeline Centerline
- HDD Pipeline Centerline
- Construction Workspaces
- NHD Waters

**Alternative Project Pipelines**

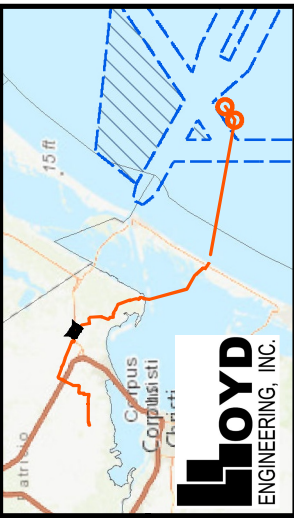
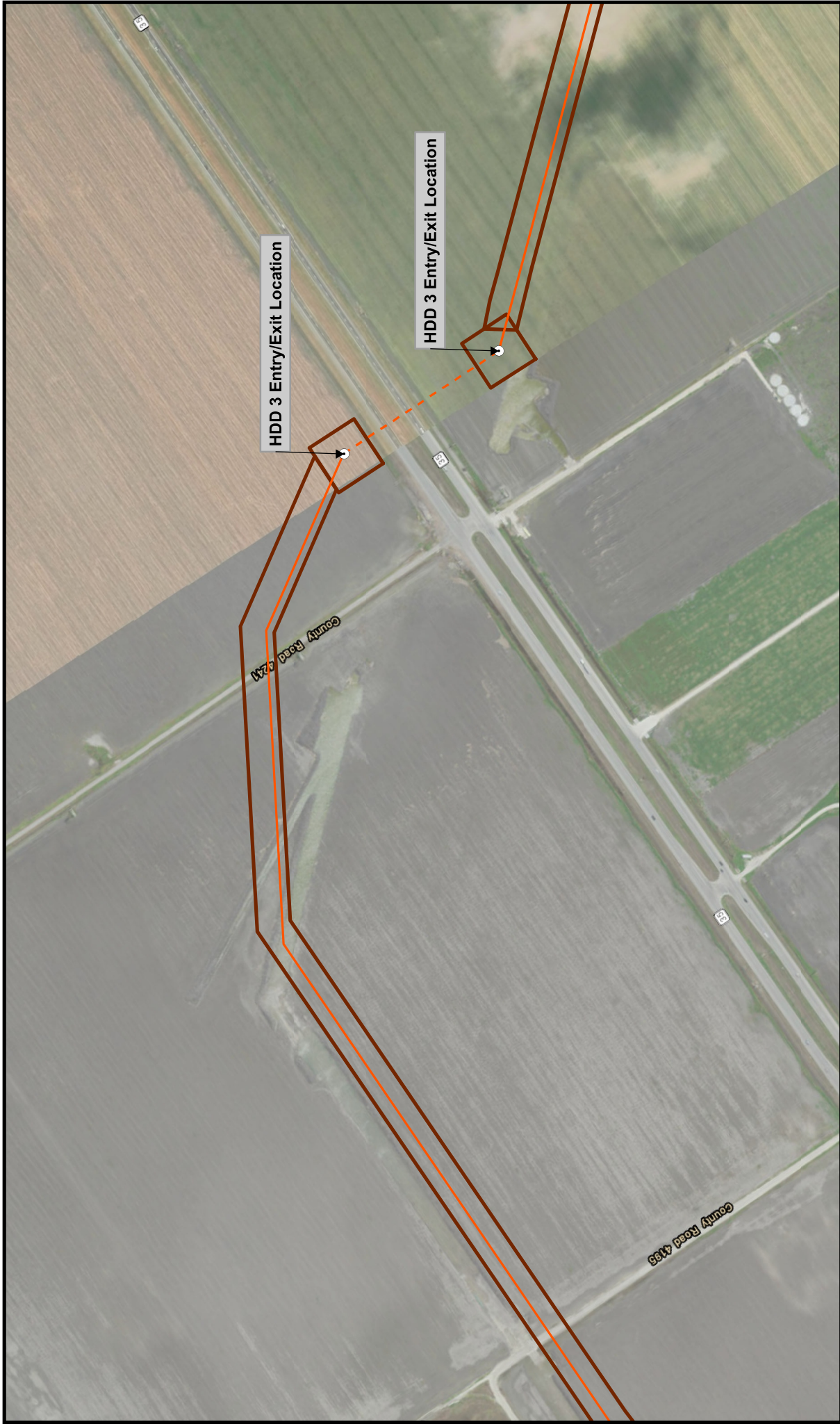
- Pipeline Centerline
- HDD Pipeline Centerline
- Construction Workspaces
- NHD Waters

**NWI Wetlands**

- Estuarine and Marine Wetland
- Freshwater Emergent Wetland
- Freshwater Forested/Shrub Wetland
- Freshwater Pond
- Lake
- Riverine

**LOYD**  
 ENGINEERING, INC.





**Map Details**

- HDD Entry/Exit Points

**Alternative Project Pipelines**

- Pipeline Centerline
- HDD Pipeline Centerline
- Construction Workspaces
- NHD Waters

**NWI Wetlands**

- Estuarine and Marine Wetland
- Freshwater Emergent Wetland
- Freshwater Forested/Strub Wetland
- Freshwater Pond
- Lake
- Riverine

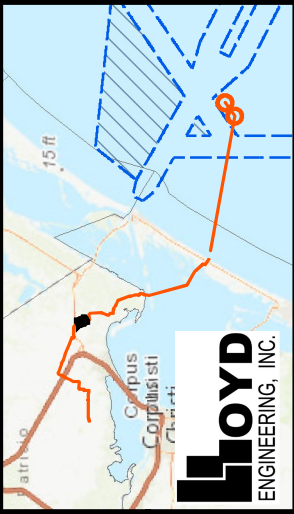
1 inch = 500 feet

0 250 500 Feet

Coordinate System: NAD 1983 2011  
 StatePlane Texas South FIPS 4205 Ft US  
 Projection: Lambert Conformal Conic  
 Datum: NAD 1983 2011  
 Units: Foot US

**Figure 16**  
**Alternative Project Detail Map**  
 Construction, Operation, and  
 Decommissioning Procedures  
 Bluewater SPM Project  
 Bluewater Texas Terminal LLC

Date: May 10, 2019



- Map Details**
- HDD Entry/Exit Points
- Alternative Project Pipelines**
- Pipeline Centerline
  - - - HDD Pipeline Centerline
  - ▭ Construction Workspaces
  - NHD Waters

- NWI Wetlands**
- Estuarine and Marine Wetland
  - Freshwater Emergent Wetland
  - Freshwater Forested/Shrub Wetland
  - Freshwater Pond
  - Lake
  - Riverine

1 inch = 500 feet

0 250 500 Feet

Coordinate System: NAD 1983 2011  
 StatePlane Texas South FIPS 4205 Ft US  
 Projection: Lambert Conformal Conic  
 Datum: NAD 1983 2011  
 Units: Foot US

**Figure 17**  
**Alternative Project Detail Map**  
 Construction, Operation, and  
 Decommissioning Procedures  
 Bluewater SPM Project  
 Bluewater Texas Terminal LLC

Date: May 10, 2019



**Figure 18**  
**Alternative Project Detail Map**  
 Construction, Operation, and  
 Decommissioning Procedures  
 Bluewater SPM Project  
 Bluewater Texas Terminal LLC

Date: May 10, 2019

1 inch = 500 feet

0 250 500  
Feet

Coordinate System: NAD 1983 2011  
 StatePlane Texas South FIPS 4205 Ft US  
 Projection: Lambert Conformal Conic  
 Datum: NAD 1983 2011  
 Units: Foot US

**Map Details**

- HDD Entry/Exit Points

**Alternative Project Pipelines**

- Pipeline Centerline
- HDD Pipeline Centerline
- Construction Workspaces
- NHD Waters

**NWI Wetlands**

- Estuarine and Marine Wetland
- Freshwater Emergent Wetland
- Freshwater Forested/Strub Wetland
- Freshwater Pond
- Lake
- Riverine

15 ft

Corpus Christi  
 Clute

**LLOYD**  
ENGINEERING, INC.



HDD 4 Entry/Exit Location

**Figure 19**  
**Alternative Project Detail Map**  
 Construction, Operation, and  
 Decommissioning Procedures  
 Bluewater SPM Project  
 Bluewater Texas Terminal LLC

Date: May 10, 2019

1 inch = 500 feet

0 250 500 Feet

Coordinate System: NAD 1983 2011  
 StatePlane Texas South FIPS 4205 Ft US  
 Projection: Lambert Conformal Conic  
 Datum: NAD 1983 2011  
 Units: Foot US

**Map Details**

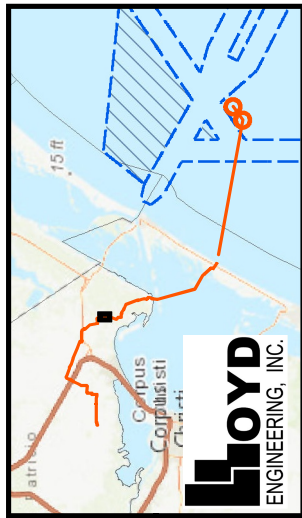
- HDD Entry/Exit Points

**Alternative Project Pipelines**

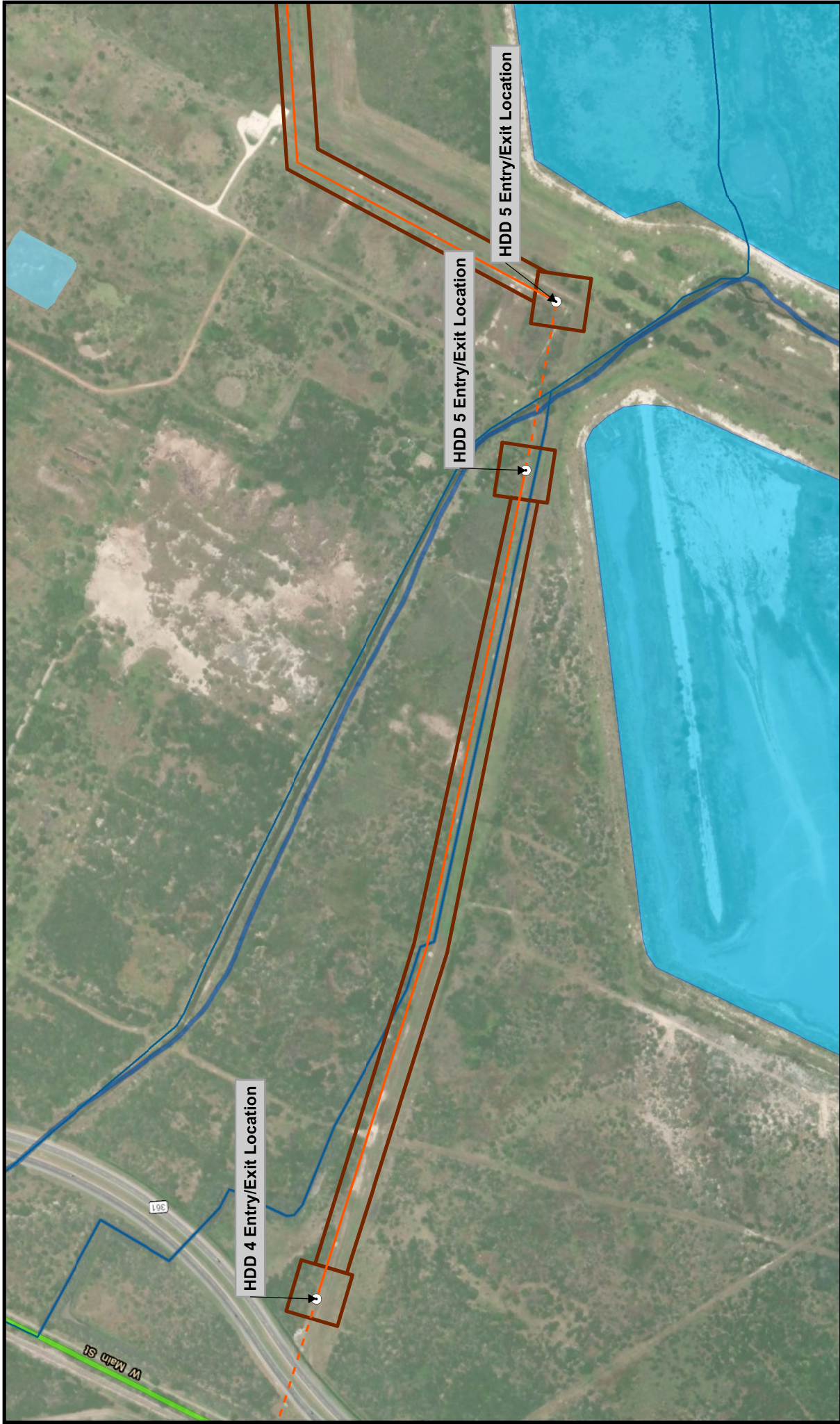
- Pipeline Centerline
- HDD Pipeline Centerline
- Construction Workspaces
- NHD Waters

**NWI Wetlands**

- Estuarine and Marine Wetland
- Freshwater Emergent Wetland
- Freshwater Forested/Strub Wetland
- Freshwater Pond
- Lake
- Riverine



**LLOYD**  
 ENGINEERING, INC.



**Figure 20**  
**Alternative Project Detail Map**  
 Construction, Operation, and  
 Decommissioning Procedures  
 Bluewater SPM Project  
 Bluewater Texas Terminal LLC  
 Date: May 10, 2019

1 inch = 500 feet

0 250 500 Feet

Coordinate System: NAD 1983 2011  
 StatePlane Texas South FIPS 4205 Ft US  
 Projection: Lambert Conformal Conic  
 Datum: NAD 1983 2011  
 Units: Foot US

**Map Details**

- HDD Entry/Exit Points

**Alternative Project Pipelines**

- Pipeline Centerline
- HDD Pipeline Centerline
- Construction Workspaces
- NHD Waters

**NWI Wetlands**

- Estuarine and Marine Wetland
- Freshwater Emergent Wetland
- Freshwater Forested/Strub Wetland
- Freshwater Pond
- Lake
- Riverine

**LLOYD**  
 ENGINEERING, INC.



**Figure 21**  
**Alternative Project Detail Map**  
 Construction, Operation, and  
 Decommissioning Procedures  
 Bluewater SPM Project  
 Bluewater Texas Terminal LLC

1 inch = 500 feet

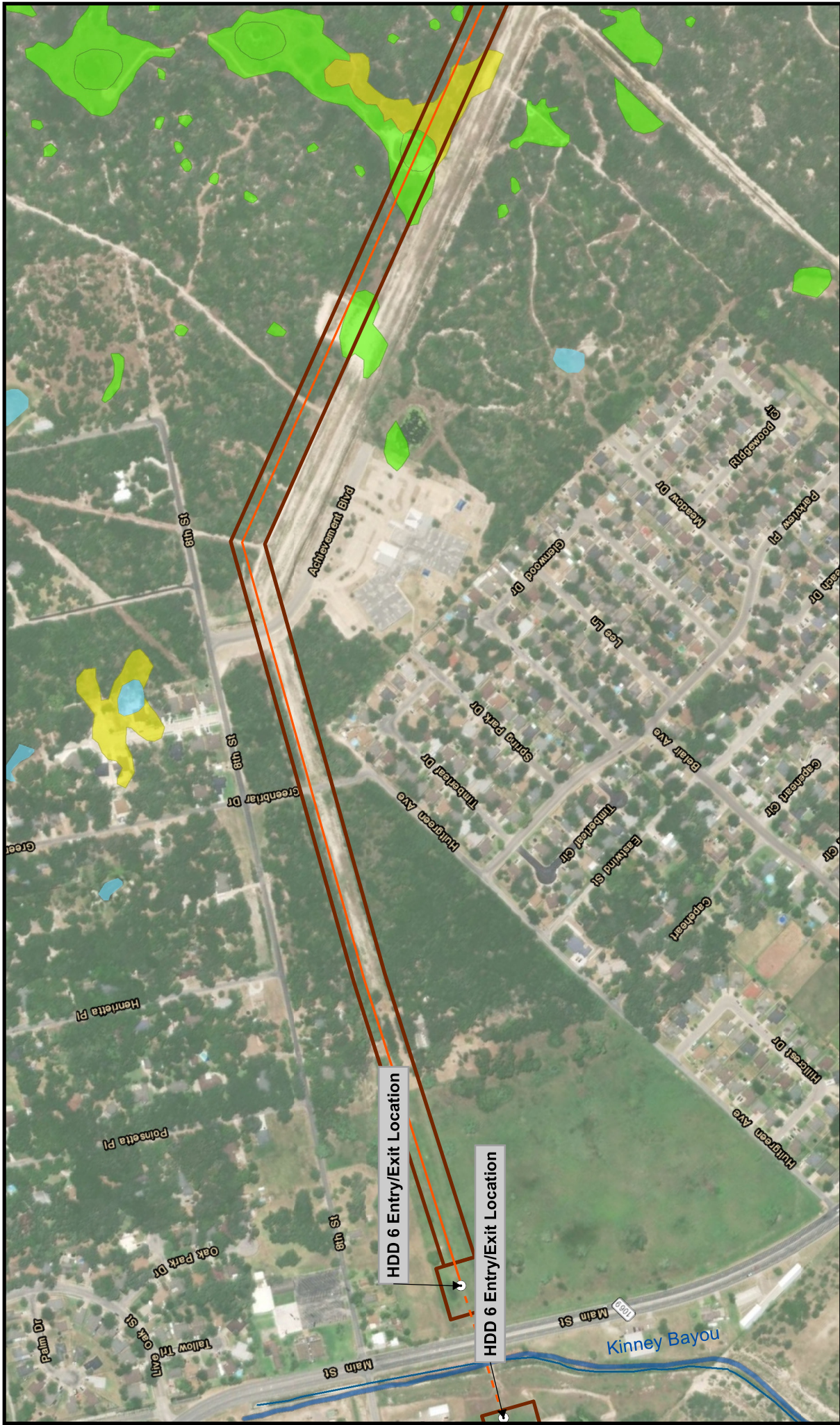
Coordinate System: NAD 1983 2011  
 StatePlane Texas South FIPS 4205 Ft US  
 Projection: Lambert Conformal Conic  
 Datum: NAD 1983 2011  
 Units: Foot US

**Map Details**

- HDD Entry/Exit Points
- Alternative Project Pipelines
  - Pipeline Centerline
  - HDD Pipeline Centerline
  - Construction Workspaces
  - NHD Waters
- NWI Wetlands
  - Estuarine and Marine Wetland
  - Freshwater Emergent Wetland
  - Freshwater Forested/Shrub Wetland
  - Freshwater Pond
  - Lake
  - Riverine



Date: May 10, 2019



**Figure 22**  
**Alternative Project Detail Map**  
 Construction, Operation, and  
 Decommissioning Procedures  
 Bluewater SPM Project  
 Bluewater Texas Terminal LLC  
 Date: May 10, 2019

1 inch = 500 feet

Coordinate System: NAD 1983 2011  
 StatePlane Texas South FIPS 4205 Ft US  
 Projection: Lambert Conformal Conic  
 Datum: NAD 1983 2011  
 Units: Foot US

**Map Details**

- HDD Entry/Exit Points
- Pipeline Centerline
- HDD Pipeline Centerline
- Construction Workspaces
- NHD Waters

**Alternative Project Pipelines**

- Pipeline Centerline
- HDD Pipeline Centerline
- Construction Workspaces
- NHD Waters

**NWI Wetlands**

- Estuarine and Marine Wetland
- Freshwater Emergent Wetland
- Freshwater Forested/Shrub Wetland
- Freshwater Pond
- Lake
- Riverine

**LOYD**  
 ENGINEERING, INC.